

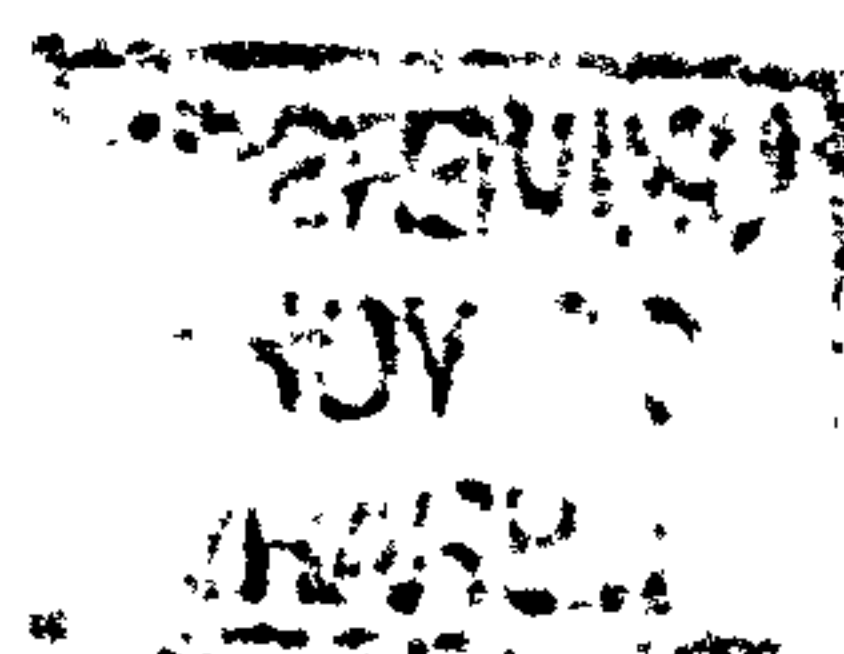
**The Archaeology of Monasticism
Landscape, Politics and Social Organisation in Late Antique Syria**

Volume 2: Appendices

Daniel Hull

Submitted for the degree of PhD
Department of Archaeology
University of York

March 2006



Contents

A	Full colour image of the distribution of monastic sites, settlement sites, Roman roads and water courses, with a Landsat backdrop.	3
B	Full colour image of the distribution of monastic sites, settlement sites, Roman roads and water courses, without a backdrop.	5
C	Table summarising the climatic and environmental data used in the discussion in section 3.2.	7
D	Table of settlement sites within the study area.	9
E	Gazetteer of monastic sites in the thesis study area, displaying information relating to site location, morphology, bibliographical references and author's comments.	16
F	CD containing the full monastery and settlement database created for this thesis, as well as the Geographical Information System files.	Back cover

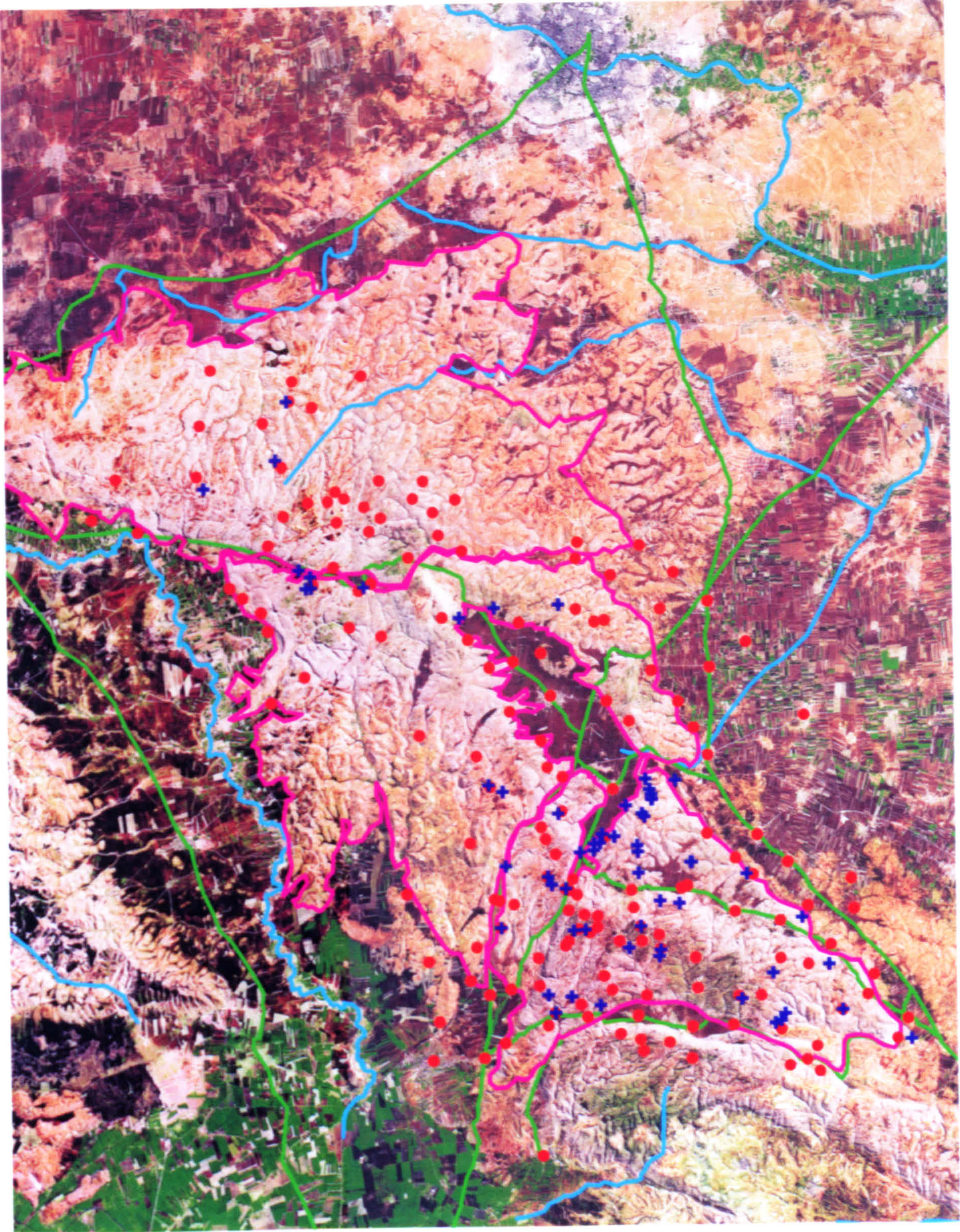
Appendix: A

Title: Full colour image of the distribution of monastic sites, settlement sites, Roman roads and water courses, with a Landsat backdrop.

Notes

See Chapter 5 for an explanation of how the information presented here was acquired. Data derives from my own fieldwork, as well as Butler (1907-9), Tchalenko (1953-8), Peña et al (1987), with subsidiary information provided by Mattern (1944), Lassus (1947), Khoury (1987), Ruggieri (1992), Tate (1992), Biscop (1997), Loosley (2001), Hadjar (2003) and Trombley (2004).

The data was manipulated and displayed using ArcView 3.1. The full Geographical Information System can be accessed in Appendix F (on CD: ArcView 3.1 software required).



40 km

30

20

10

0



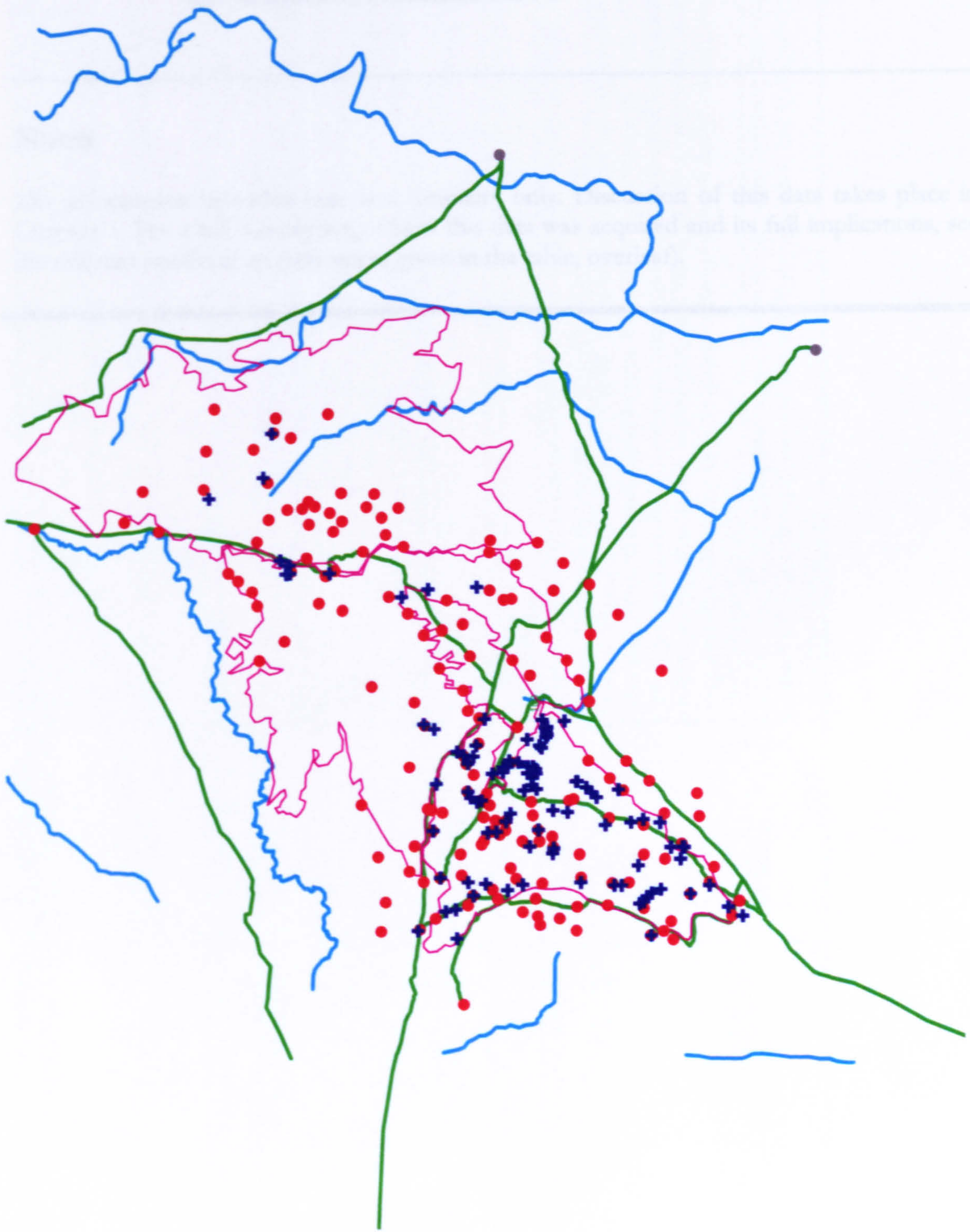
Appendix: B

Title: Full colour image of the distribution of monastic sites, settlement sites, Roman roads and water courses, without a satellite imagery backdrop.

Notes

As with Appendix A, see Chapter 5 for an explanation of how the information presented here was acquired. Data derives from my own fieldwork, as well as Butler (1907-9), Tchalenko (1953-8), Peña et al (1987), with subsidiary information provided by Mattern (1944), Lassus (1947), Khoury (1987), Ruggieri (1992), Tate (1992), Biscop (1997), Loosley (2001), Hadjar (2003) and Trombley (2004).

The data was manipulated and displayed using ArcView 3.1. The full Geographical Information System can be accessed in Appendix F (on CD: ArcView 3.1 software required).



40 km

30

20

10

0

Appendix: C

Title: Table summarising the climatic and environmental data used in the discussion in section 3.2.

Notes

The information provided here is a summary only. Discussion of this data takes place in Chapter 3. For a full description of how this data was acquired and its full implications, see the relevant publications (references given in the table, overleaf).

	Study	Region	Evidence Type	Summary
1	Lemcke & Sturm 1997	Lake Van	Lake varves	Sharp rise in humidity from the late Iron Age going into the Roman period. Humidity dipped again towards the end of the third century AD, and did not rise to the same levels until the seventh century.
2	Bar-Matthews et al 1998	Soreq Cave, Palestine	Cave sediments	Increasing moisture from the 'early Roman period' onwards, a sudden dip c.1000 AD.
3	Besançon et al 1997	Palmyra	Carbonate deposits	Two samples, from 20 AD \pm 30 and 90 AD \pm 70, suggest rising levels of humidity.
4	Rösner & Schäbitz 1991	Khatouniye, Syrian Jazira	Soil sediments	c.90 BC to 243 AD, there was increased sedimentation and soil improvement, which coincided with increased pollen activity, and significantly a shift away from species typical of a steppe environment. This coincided with a spell of increased humidity. The authors suggest that such changes imply 'a stronger anthropogenic influence' which probably derives from intensive farming activity (1991, 85). After around 243 AD (or even as late as 343 AD if the standard deviation of the calibrated radiocarbon dates is taken into account), 'coincides with a time for which the sedimentological and palynological findings in the Khatouniye profile indicate drier conditions again'.
5	Schwab et al 2003	Birkat Ram, Golan	Soil sediments	Steady increase of <i>Olea</i> , <i>Vitis</i> and <i>Juglans</i> values can be observed 'demonstrating 'the expansion of agriculture.
6	Casana 2004	Antioch	Observations in a section	Large amounts of sediment sealed deposits 'of late antique date', presumably deriving from denuded hillsides above.
7	Eastwood et al 1998	Beyshehir, SW Turkey	Soil sediments	Regions over 1000m in elevation appear to have undergone intensive deforestation from the later second millennium BC, continuing until around 600 – 700 AD.
8	Bottema 1995	Sögütlü, Lake Van	Soil sediments	Peak of arboreal activity around 1535 BP 50, which when calibrated suggests dates of 540 - 602 AD (Bottema 1995). The predominant species responsible for this rise is the Turkey Oak, <i>Quercus cerris</i> , which germinates readily in a moist landscape. Consequently, it could be argued that the increase in such a species indicates a rise in precipitation. Although it may be premature to do so, it could also be suggested that human activity is decreasing in the uplands and deforestation is diminishing, as activity in the lowlands increases.
9	Vermoere et al 2002	SW Turkey	Lake varves	2 cores conclude that high pollen representation of cultivation indicators (esp olive and walnut) cease around 600 AD (calibrated) and 700 AD, with high pine pollen 'due to degradation and overgrazing' thereafter' (2002, 579).

Appendix: D

Title: Table of settlement sites within the study area.

Notes

This table is a summary of the Settlement Sites table in the main database. It summarises those sites researched through fieldwork for this thesis, and studies already carried out by Tchalenko 1953 and Tate 1992. For full locational details, see the GIS in Appendix F (on CD).

Site name	Settlement ID	Latitude	Longitude	UTM x	UTM y	Elevation	Area (Jebel)	Site Certainty	Visible from monastic site?	Surface Area (sq m)	Notes
'Ain Dalfi	Set61	36.6537	36.2340	289097	4013035	274	Halaqa	3		43050	
Al-Darmin	Set10	36.8613	36.2621	308223	4015760	553	Sim'an	2			
Al-Dawwar	Set156	36.59872	36.11267	283867	3999116	541	Barisha	3	Yes		
Al-Ishruq	Set132	36.58487	36.19447	282846	4008222	576	Barisha				
Al-Juwaniya	Set145	36.55782	36.09863	280146	3997650	698	Barisha	3	No		
Al-Khuraybat	Set158	36.56926	36.08589	281141	3996210	515	Barisha	2	No		
Al-Manzul	Set56	36.57962	36.21296	282425	4010285	532	Barisha	3			
'Archin	Set125	36.59062	36.07418	283032	3994863	388	Barisha	2	Yes		
Arhab	Set97			306908	4008597	400	Halaqa	1			Co-ordinates may require checking on the ground.
		36.8453	36.1939								
Ba'a	Set79	36.8587	36.3479	307843	4024729	562	Sim'an	2	Yes		
Bab al-Hawa	Set25	36.7212	36.2010	295440	4009428	397	Halaqa	5	Yes		
Babisqa	Set51			292219	4010344	453	Barisha	1			Co-ordinates may require checking on the ground.
		36.68847	36.21564								
Babka	Set23	36.7576	36.1192	297983	4002498	330	Halaqa	4	No		
Babutta	Set47	36.6557	36.1936	289288	4008721	642	Barisha	4			
Bafettin	Set116			287570	4005418	570	Barisha		Yes		Includes a monastery within the settlement (very close to the E basilica).
		36.63813	36.17026								
Bamugqa	Set41	36.6374	36.1931	287495	4008665	572	Barisha	4			
Banakfour	Set117	36.60060	36.18317	284230	4006933	509	Barisha	3			
Banqusa	Set118	36.62039	36.10380	285794	3998084	539	Barisha	4			
Bagirha	Set48	36.65980	36.20597	289615	4009333	557	Barisha	4			
Bardakhan	Set73	36.8205	36.3511	304356	4025121	360	Halaqa	2	Yes		
Barisha	Set127	36.62942	36.16937	286784	4005339	563	Barisha	4	No		
Bashakuh	Set106	36.6346	36.1878	287269	4008070	584	Barisha	4			
Bashmishli	Set36	36.6446	36.1900	288240	4008345	608	Barisha	4			
Basufan	Set68	36.87642	36.34127	309404	4023905	603	Sim'an	3	No		
Basuta	Set77	36.87459	36.43936	309312	4033946	223	Sim'an	2	No		
Batabu	Set3	36.73861	36.13958	296530	4001799	328	Halaqa	4	No		
Batuta	Set83			309814	4019653	593	Sim'an	1	No		Co-ordinates may require checking on the ground.
		36.8799	36.2999								
Ba'uda	Set108	36.69524	36.21772	292833	4010560	417	Barisha	3			
Bazihar	Set67	36.8710	36.3134	309021	4021102	590	Sim'an	2			

Bazliq	Set161	36.59764	36.16682	283919	4005125	459	Barisha	3				
Birat Kaftin	Set154	36.65150	36.09123	288562	3996621	378	Barisha	3				
Brad	Set1		36.38251	311535	4028426	585	Sim'an	1	Yes	200900	Co-ordinates may require checking on the ground.	
Brayj	Set11	36.8515	36.2503	307366	4014537	495	Sim'an	4	Yes			
Burdaqli	Set28	36.7268	36.2085	295951	4010210	426	Halaqa	3				
Burj 'Abdalo	Set76	36.8648	36.3934	308616	4031544	271	Sim'an	3	No			
Burj al-Kharuf	Set138			284507	4010720	333	Barisha	3			Name taken from Pena et al 1987, seems to match the settlement shown in Tchalenko 1953	
Burj al-Qas	Set93	36.9628	36.3922	314291	4024939	524	Sim'an	4	Yes			
Burj Baqirha	Set168	36.65908	36.20403	289533	4009127	581	Barisha	5			Pagan temple (settlement evidence unlikely).	
Burj Haydar	Set2	36.90506	36.34246	311995	4023971	573	Sim'an	1	Yes	39150	Co-ordinates may require checking on the ground.	
Burjka	Set89	36.8830	36.3184	310123	4021567	590	Sim'an	1	No		Co-ordinates may require checking on the ground.	
Buzghar	Set129	36.62030	36.14404	285895	4002548	523	Barisha	3	No			
Bzimba	Set157	36.56137	36.09058	280443	3996748	723	Barisha	2	Yes			
Dana	Set15	36.7673	36.2064	299754	4009996	391	Halaqa	5	Yes			
Dar Qira	Set50	36.66688	36.21462	290275	4010277	479	Halaqa	4	Yes	34000		
Dart 'Azza	Set9			307062	4017368	512	Sim'an	5	No	201600	Caution with surface area must be checked.	
Dayr Ahshan	Set134	36.76279	36.23324	298945	4012140	411	Halaqa	5	Yes			
Dayr 'Aman	Set120	36.82278	36.20270	304257	4008625	464	Halaqa		Yes			
Dayr Sim'an	Set69	36.83341	36.32856	305727	4022399	492	Halaqa	4	Yes	119050		
Dayr Sita	Set121	36.64265	36.10424	287799	3998084	450	Barisha	4	No			
Dehes	Set107	36.62921	36.17989	286794	4006506	600	Barisha	2	Yes			
Eski Jalama	Set70	36.7830	36.3287	300947	4022870	466	Halaqa	2	No			
Fafartin	Set87			310635	4021147	596	Sim'an	1	Yes		Co-ordinates may require checking on the ground. Oldest church in N Syria (Tch CXXVIII) - 372.	
Fidra	Set63	36.8885	36.3146	303514	4020495	484	Halaqa	1	No		Co-ordinates may require checking on the ground.	
Funduq	Set149	36.58634	36.04333	282562	3991450	299	Barisha	4	No			
Ghazzuwiya	Set75	36.8361	36.3659	305634	4026758	229	Halaqa	3	Yes			

Harbanush	Set122	36.62870	36.08015	286478	3995441	451		Barisha	4	Yes	
Harran	Set44	36.6055	36.2123	284347	4012216	203		Barisha	4	No	
Hattan	Set110	36.5886	36.1645	282856	4005587	626		Barisha	4	Yes	
Hayr Salah	Set155	36.66949	36.11731	290250	3999475	403		Barisha	3	Yes	
Hazra	Set12	36.7875	36.2248	301566	4011930	397		Halaqa	5	Yes	
Hazra al 'Atuqa	Set35	36.7837	36.2375	301256	4013192	438		Halaqa	3	Yes	
Ibazmu	Set103	36.8517	36.1624	307578	4005222	405		Sim'an	3	No	
Ibrahim Pasha	Set60	36.6270	36.2434	286551	4013991	268		Halaqa	3	No	
Imma	Set5	36.5655	36.2401	280747	4013635	179		Barisha	4	Yes	
Iskian	Set72	36.8096	36.3473	303382	4024774	340		Halaqa	3	Yes	
Jalama	Set71	36.7680	36.3453	299603	4024638	226		Halaqa	4	Yes	
Kabbishin	Set94	36.9391	36.3267	315062	4022339	519		Sim'an	1	No	Co-ordinates may require checking on the ground.
Kafr 'Ada	Set59	36.6090	36.2453	284806	4014321	200		Halaqa	4	No	
Kafr 'Arug	Set124	36.64787	36.12579	288327	4000463	428		Barisha		Yes	
Kafr Binni	Set126	36.59986	36.06239	283832	3993535	433		Barisha	2	Yes	
Kafr Darian	Set39	36.6572	36.1671	289497	4005857	489		Barisha	2	Yes	
Kafr Fansha	Set131	36.57905	36.10296	282070	3998082	583		Barisha		Yes	
Kafr Hawa'	Set29	36.7341	36.2428	296585	4013906	407		Halaqa	2	Yes	
Kafr Karmin	Set100	36.8006	36.1397	301011	4004700	352		Halaqa	2	No	
Kafr Lab	Set88	36.8834	36.3284	310079	4022609	568		Sim'an	2	Yes	
Kafr Nabo	Set95	36.9308	36.3837	314201	4028242	526		Sim'an	1	No	Co-ordinates may require checking on the ground.
Kafr Sahir	Set167	36.69265	36.13944	292393	4001881	407		Barisha	2	Yes	
Kafrantin	Set65	36.8718	36.2911	309211	4018798	608		Sim'an	1	Yes	
Kaftin	Set147	36.67690	36.10100	290874	3997650	335		Barisha	3	No	
Kalli	Set146	36.69233	36.11562	292302	3999239	324		Barisha	5	No	
Kalota	Set92	36.9636	36.3791	317093	4027642	461		Sim'an	1	No	Co-ordinates may require checking on the ground.
Kara Injir	Set55	36.5739	36.2285	281512	4012536	314		Barisha	3	Yes	PERHAPS Kara Injir (confusion between Tchalenko 1953 & Pena et al 1987).
Kfayr	Set81	36.8830	36.2752	310191	4017091	577		Halaqa	1	Yes	Co-ordinates may require checking on the ground.
Kfayr	Set14	36.7919	36.2110	301978	4010481	401		Halaqa	3	Yes	

Kfayr	Set52	36.6732	36.2059	291433	4009827	439	Halaqa	1	Yes		Co-ordinates may require checking on the ground.
Kharab Rab'ita	Set160	36.63313	36.16129	287096	4004434	553	Barisha	4	Yes		
Kharab Shams	Set91	36.94325	36.33917	315415	4023532	528	Sim'an	1	Yes	36500	Co-ordinates may require checking on the ground.
Khirbat Balata	Set164	36.63741	36.19058	287561	4007674	576	Barisha	3	No		
Khirbat Dumat	Set166	36.67868	36.12580	291100	4000398	386	Barisha	2	No		
Khirbat Hadiya	Set37	36.6472	36.1979	288482	4009163	589	Barisha	4	Yes		Site inferred by comparing Pena et al 1987 and Tchalenko 1953.
Khirbat Hasan	Set143	36.60871	36.18693	284970	4007332	525	Barisha	3	Yes		
Khirbat Khatib	Set42	36.61884	36.21821	285966	4010780	238	Barisha	3	No		Pagan temple here.
Khirbat Ma'bur	Set140	36.76988	36.15372	299380	4003302	330	Halaqa	3	No		
Khirbat Sharqiyya	Set40	36.62892	36.20403	286833	4009185	519	Barisha	3	Yes		
Khirbat Tannura	Set80	36.8745	36.2648	309442	4016034	508	Sim'an	1	No		Co-ordinates may require checking on the ground.
Khirbat Tezin	Set53	36.6510	36.2243	288829	4012018	399	Barisha	2	No		
Khirbat Zawiya	Set165	36.66553	36.20248	290121	4008933	516	Barisha	3	Yes		
Khuraybat al-Qass	Set163	36.64410	36.19058	288162	4007660	612	Barisha	1	Yes		Co-ordinates may require checking on the ground.
Kimar	Set78	36.89679	36.42073	311442	4032670	560	Sim'an	1	Yes		Co-ordinates may require checking on the ground.
Kis'ala	Set27	36.7423	36.2116	297391	4010534	426	Halaqa	4	Yes		
Ksajba	Set119	36.70466	36.20819	293655	4009483	479	Barisha	5	Yes		
Kukanaya	Set130	36.59826	36.12325	283855	4000290	528	Barisha	3	Yes		
Kuku	Set159	36.55473	36.8442	279828	3996080	747	Barisha	1	No		Co-ordinates may require checking on the ground.
Ma'arrat Shelf	Set144	36.58129	36.12579	282334	4000610	506	Barisha	4	Yes		
Ma'rabuna	Set148	36.61169	36.05970	284890	3993210	434	Barisha	3	Yes		
Ma'ramaya	Set141	36.58706	36.20996	283086	4009935	492	Halaqa	3	Yes		

Mashad	Set8	36.8648	36.2968	308517	4019405	601	Sim'an	3	Yes		
Mashad Ruhin	Set33	36.7465	36.2713	297747	4016883	360	Halaqa	2	No		
M'az	Set38	36.66091	36.15088	289568	4003218	429	Barisha	4	Yes		
Mshabbak	Set85	36.8813	36.2542	310093	4014858	494	Sim'an	1	No	Co-ordinates may require checking on the ground.	
Mughar Shams	Set58	36.6202	36.2658	285829	4016504	179	Halaqa	1	No	Co-ordinates may require checking on the ground.	
Namura	Set162	36.64910	36.17361	288566	4005766	632	Barisha	2	Yes		
Not known	Set54	36.6533	36.2316	289015	4012783	313	Barisha	3			
Not known	Set62	36.6861	36.2462	292042	4014292	409	Halaqa	2			
Not known	Set20	36.8099	36.1796	303676	4007121	422	Halaqa	2			
Not known	Set45	36.6011	36.2362	284058	4013329	196	Barisha	4			
Not known	Set24	36.7521	36.1677	298354	4005880	450	Halaqa	3			
Not known	Set139	36.66227	36.14823	289683	4002921	386	Barisha	3	Yes	Perhaps the same as Pena et al's 'Khirbat Jobb al-Kabir' (1987)?	
Nuriya	Set142	36.59202	36.19768	283498	4008562	482	Barisha	3	Yes		
Qandaruh	Set150	36.61706	36.09055	285458	3996621	486	Barisha	3	No		
Qarganya	Set128	36.60240	36.14273	284281	4002443	465	Barisha		Yes		
Qasr Iblisu	Set135	36.63633	36.23608	287586	4012724	309	Barisha	3	Yes		
Qaturah	Set7	36.8352	36.2959	305750	4019351	500	Halaqa	3	Yes		
Radwa	Set123	36.62512	36.16067	286374	4004382	540	Barisha		Yes		
Rafada	Set6	36.8306	36.3021	305392	4019995	482	Halaqa	2	Yes	62150	
Sahhra	Set98	36.8349	36.1765	306009	4006766	424	Halaqa	2	Yes		
Sardin	Set114	36.5817	36.1381	282254	4002727	722	Barisha	4	Yes		
Sarfud	Set46	36.6874	36.1801	292275	4007260	439	Barisha	3	Yes		
Sarjibla	Set30	36.7141	36.2417	294959	4013219	462	Halaqa	2	Yes		
Shaykh 'Akl	Set96	36.9565	36.3018	316671	4019729	496	Sim'an	1	No	Co-ordinates may require checking on the ground.	
Shaykh Bahar	Set133	36.57471	36.04810	281527	3992005	321	Barisha		No		
Shaykh Barakat	Set34	36.8146	36.2740	303905	4015629	606	Halaqa	2	Yes		
Shaykh Shadar	Set74	36.8291	36.3607	305099	4026089	325	Halaqa	2	No		
Shaykh Sulayman	Set82	36.8934	36.2701	311100	4016532	529	Sim'an	1	No	Co-ordinates may require checking on the ground.	

Silfaya	Set49	36.62638	36.20537	286609	4009339	503	Barisha	3	Yes		
Sinkhar	Set90	36.8946	36.2926	311183	4018854	559	Sim'an	1	No		Co-ordinates may require checking on the ground.
Sirmada	Set101	36.71760	36.18410	294755	4006783	380	Halaga	3	Yes		
Surqanya	Set84	36.8850	36.3095	310269	4020694	597	Sim'an	1	Yes		Co-ordinates may require checking on the ground.
Taqla	Set64	36.8440	36.3148	306640	4021297	500	Sim'an	2	Yes		1 x olive press attached to the church
Tawami	Set16	36.8085	36.1847	303602	4007650	435	Halaga	2	No		
Tazin	Set136	36.65550	36.28055	289429	4017616	255	Halaga	3	No		
Tell 'Ada	Set31	36.8004	36.2480	302732	4014297	417	Barisha	3	Yes	29700	
Tell Aqibrin	Set19	36.7635	36.1790	299448	4007057	398	Halaga	3	Yes		
Toqad	Set43			307780	4008489	471	Sim'an	1	Yes		Includes a monastery within the settlement. Co-ordinates may require checking on the ground.
Turmanin	Set13	36.8555	36.1928	303606	4011614	419	Halaga	4	Yes		
Zarzita	Set32	36.8045	36.2905	303019	4018840	550	Halaga	2	Yes		
Zuq al-Kabir	Set86	36.9841	36.3409	316449	4023375	520	Sim'an	1	Yes		Co-ordinates may require checking on the ground.

Appendix: E**Title:** Gazetteer of monastic sites within the study area.

Notes

This gazetteer is a summary of the Monastic Sites table in the main database. It contains sites researched through fieldwork for this thesis, and studies already carried out by Butler (1907-9), Tchalenko (1953-8) and Peña et al (1987), with subsidiary information provided by Mattern (1944), Lassus (1947), Khoury (1987), Ruggieri (1992), Tate (1992), Biscop (1997), Loosley (2001), Hadjar (2003) and Trombley (2004). This gazetteer contains all sites assumed by any previous authors to have been monastic. Consequently, it should be read in conjunction with Chapters 4 and 5, which explain the criteria by which the full 141 sites presented here were refined to include only those 61 sites considered in this thesis to have hosted monastic activity in Late Antiquity. In order to show the location of each of the sites, the gazetteer is preceded by a set of maps. For full locational details, the GIS should be consulted, in Appendix F (on CD).

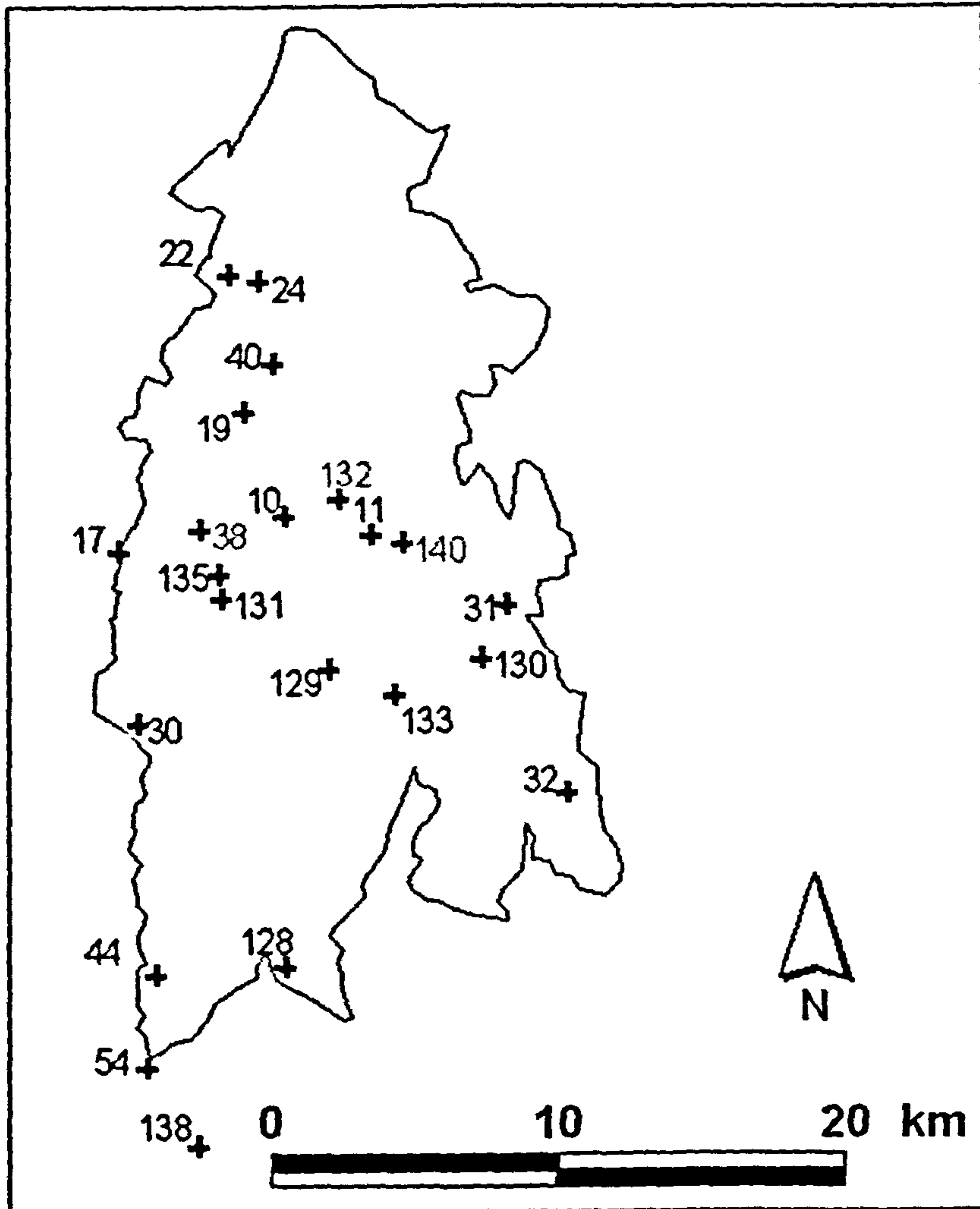
Some of the sites do not have all of their boxes filled in. This is because once the 141 sites had been filtered to provide the 61 reliably monastic sites, only these were provided with all of the relevant information.

The following key explains some of the terms used in the gazetteer:

Location certainty	0=site location not known; 1=possible; 3=probable; 5=definitely located with GPS
x / y	These are the UTM co-ordinates (ie flat co-ordinates in metres, according to a universally understood global system), as opposed to the geodetic co-ordinates of latitude/longitude.
Interpretation	1=not known (destroyed); 2 not known (not investigated); 3=certainly not; 4=probably not; 5=perhaps not; 6=perhaps yes; 7=probably yes; 8=certainly yes
Archaeological evidence	-1=not known; 0=destroyed; 1=not located; 2=possibly located; 3=probably located; 4=certainly located; 5=located and consolidated
Preservation	-1 Not known; 0 Destroyed; 1 Very poor; 2 Poor; 3 Average; 4 Good; 5 Very good; 6 Restored
Monastery SA	Monastery surface area (in m ²)
Visibility	Is the monastic site visible from a settlement site?

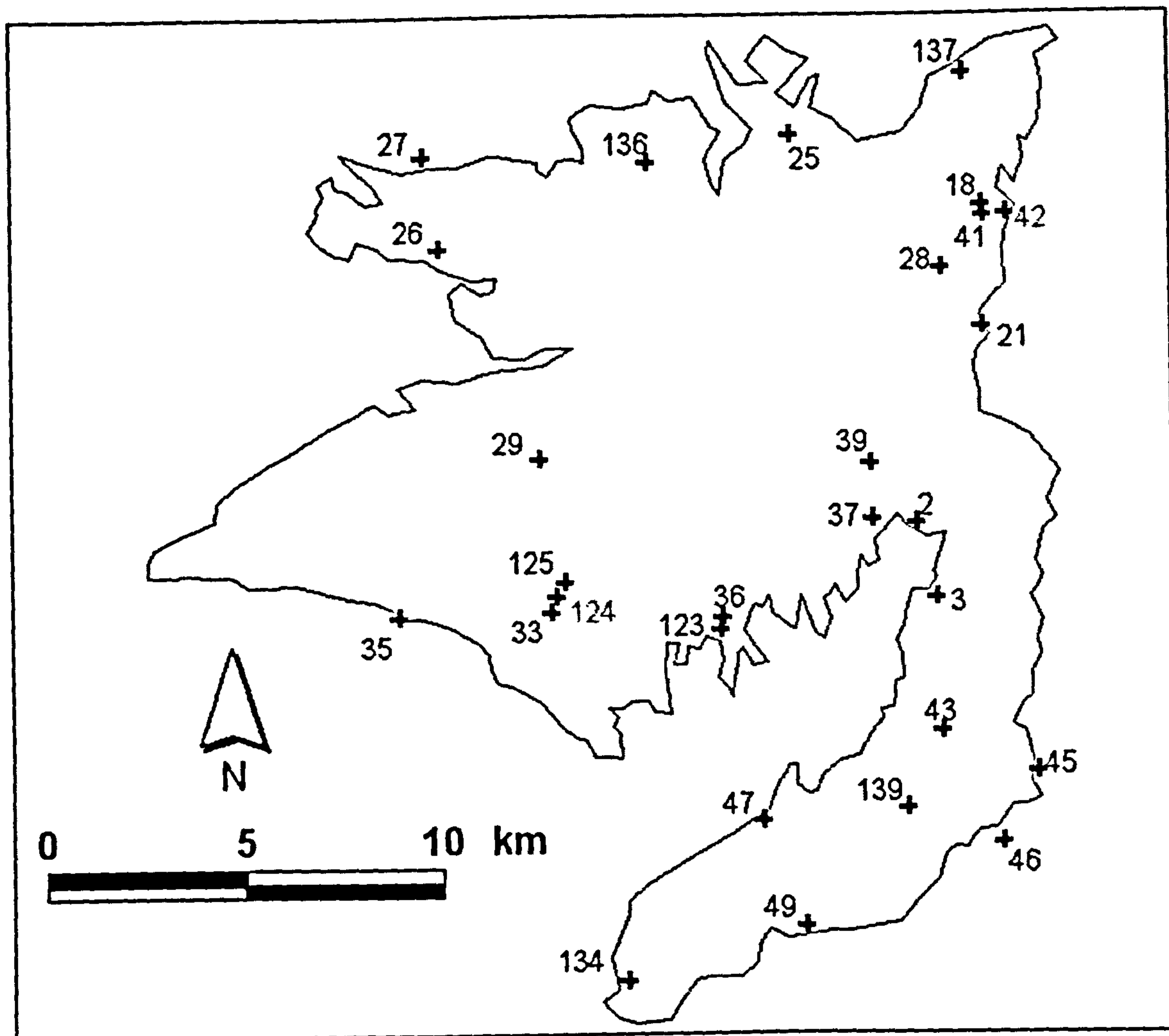
Jebel Sim'an

Site Locations



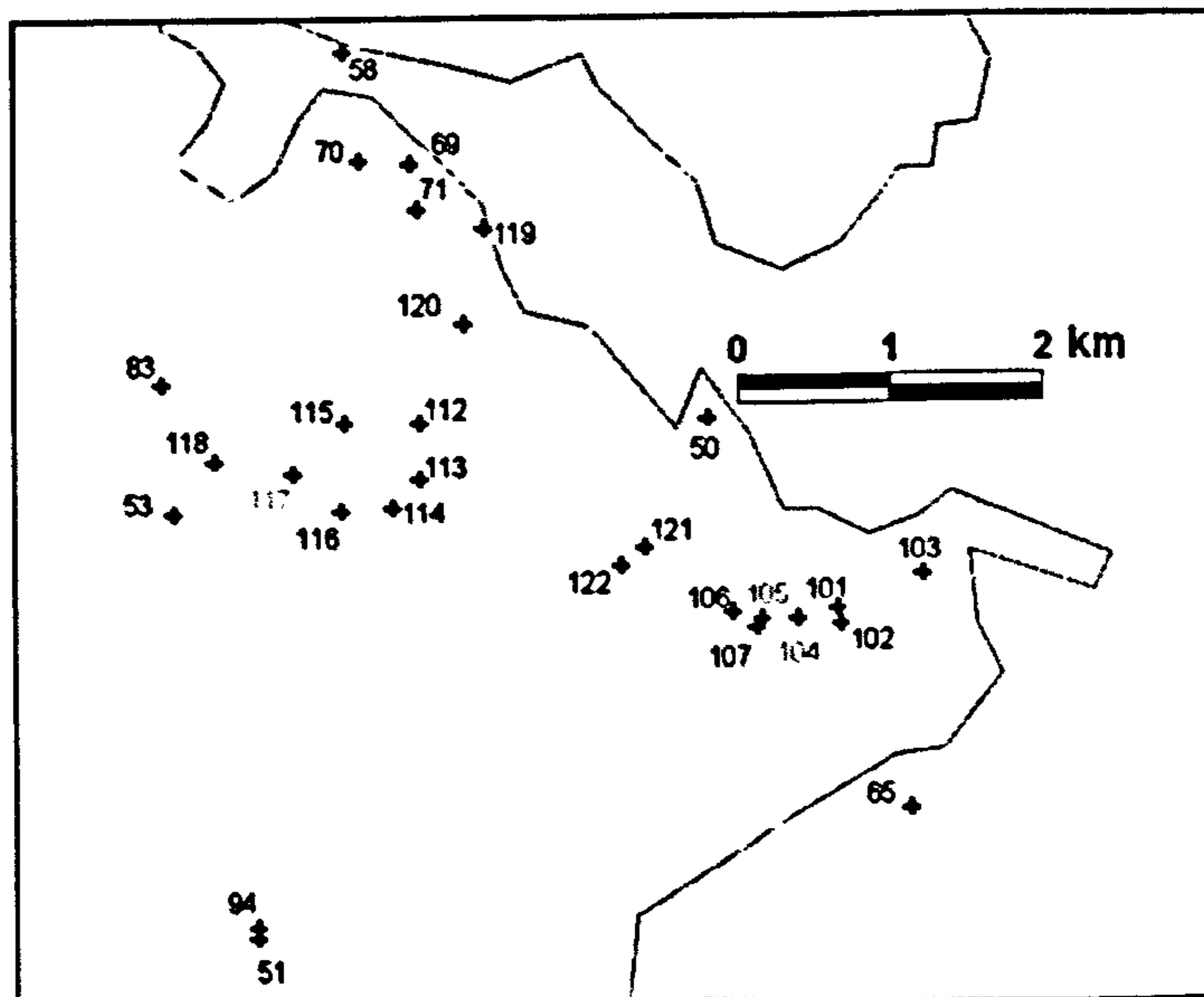
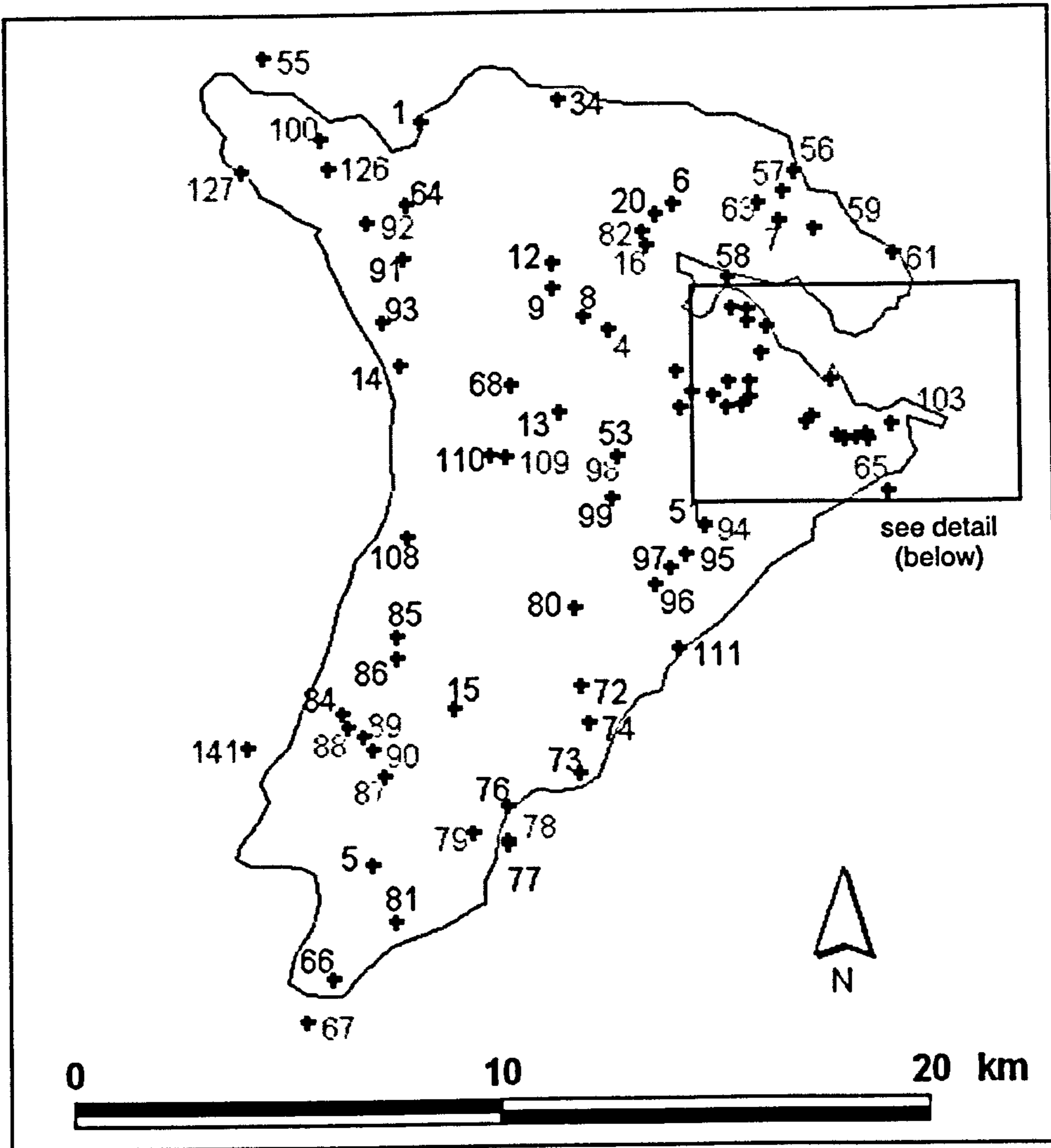
Jebel Halaqa

Site Locations



Jebel Barisha

Site Locations



ID	Name	Area
1	Harran	Jebel Barisha
Location		
NEmost edge of Jabal Barisha, 4km E of Imma		
Location certainty	Latitude	Longitude
5	36.60045	36.23078
x	y	Elevation (m asl)
284347	4012216	203
Topographical siting	Interpretation	Arch evidence
plain	2	-1
Preservation	Doc evidence	4 Letters
-1	2	Yes
Church	Baptistry	Martyrion
Not known	Not known	Not known
Reliquary	Cemetery	External walls
Not known	Not known	Not known
Communal building	Tower	Accommodation
Not known	Not known	Not known
Cistern	Presses	Monastery SA
Not known	Not known	
Distance to settlement	Nearest settlement	Distance to route Tchalenko
2.73	Set86	<input checked="" type="checkbox"/>
Visibility		
Yes		
Notes		
Equated with the village of Harran, but the monastery site not actually known		

ID	Name	Area
2	Dayr Tell Ada	Jebel Halaqa
Location		
Plain of Dana		
Location certainty	Latitude	Longitude
5	36.81656	36.25814
x	y	Elevation (m asl)
303875	4014763	451
Topographical siting	Interpretation	Arch evidence
slope	6	3
Preservation	Doc evidence	4 Letters
4	5	Yes
Church	Baptistery	Martyrion
No	No	No
Reliquary	Cemetery	External walls
No	Yes	Yes
Communal building	Tower	Accommodation
Yes	Yes	Yes
Cistern	Presses	Monastery SA
Yes	No	4848
Distance to settlement	Nearest settlement	Distance to route Tchalenko
1.33	Set31	0.83 <input checked="" type="checkbox"/>
Visibility		
Yes		
Notes		
Visited. A quarry is present.		

ID	Name	Area
	3 Dayr Turmanin	Jebel Halaqa
Location		
Plain of Dana		
Location certainty	Latitude	Longitude
1	36.82368	36.24130
x	y	Elevation (m asl)
304368	4012933	437
Topographical siting	Interpretation	Arch evidence
slope	8	4
Preservation	Doc evidence	4 Letters
3	4	Yes
Church	Baptistery	Martyrion
Yes	No	Not known
Reliquary	Cemetery	External walls
Not known	Yes	Yes
Communal building	Tower	Accommodation
Yes	No	Yes
Cistern	Presses	Monastery SA
Yes	Yes	18478
Distance to settlement	Nearest settlement	Distance to route Tchalenko
1.73	Set13	0.58 <input checked="" type="checkbox"/>
Visibility		
Yes		
Notes		
A quarry is present.		

ID	Name	Area
4	Khirbat al-Qass	Jebel Barisha
Location		
N end of Jabal Barisha, between Bashmishli and Bab'iyān		
Location certainty	Latitude	Longitude
1	36.64410	36.19058
x	y	Elevation (m asl)
288162	4007660	612
Topographical siting	Interpretation	Arch evidence
Not known	5	4
Preservation	Doc evidence	4 Letters
2	0	No
Church	Baptistery	Martyrion
No	No	No
Reliquary	Cemetery	External walls
No	No	No
Communal building	Tower	Accommodation
Yes	No	Not known
Cistern	Presses	Monastery SA
No	No	
Distance to settlement	Nearest settlement	Distance to route Tchalenko
0.00	Set163	<input type="checkbox"/>
Visibility		
Yes		
Notes		
Very ambiguous evidence (see Pena et al 1987, 150).		

ID	Name	Area	
5	Archin	Jebel Barisha	
Location			
SE edge of Jabal, 5km W of Ma'rat Ikhouan			
Location certainty	Latitude	Longitude	
3	36.59083	36.07439	
x	y	Elevation (m asl)	
283052	3994886	393	
Topographical siting	Interpretation	Arch evidence	
Not known	6	3	
Preservation	Doc evidence	4 Letters	
3	0	No	
Church	Baptistery	Martyrion	
Not clear	No	No	
Reliquary	Cemetery	External walls	
No	No	No	
Communal building	Tower	Accommodation	
No	Yes	Not clear	
Cistern	Presses	Monastery SA	
Not known	Not known		
Distance to settlement	Nearest settlement	Distance to route	Tchalenko
0.03	Set125	1.54	<input type="checkbox"/>
Visibility			
Yes			
Notes			
Perhaps a church, but seems not to be associated with the tower.			

ID	Name	Area
6	Babisqa A	Jebel Barisha
Location		
NE of Jabal, 4km NE of Kefr Deryan		
Location certainty	Latitude	Longitude
3	36.68847	36.21564
x	y	Elevation (m asl)
292245	4010273	459
Topographical siting	Interpretation	Arch evidence
Not known	5	4
Preservation	Doc evidence	4 Letters
3	0	No
Church	Baptistery	Martyrion
Yes	No	Yes
Reliquary	Cemetery	External walls
Not known	Not known	No
Communal building	Tower	Accommodation
Not clear	No	Not clear
Cistern	Presses	Monastery SA
Not known	No	
Distance to settlement	Nearest settlement	Distance to route Tchalenko
0.09	Set51	<input type="checkbox"/>
Visibility		
Yes		
Notes		
One of two monastic structures, related to one another (se Pena et al 1987)		

ID	Name	Area
7	Babisqa B	Jebel Barisha
Location		
See Babisqa A		
Location certainty	Latitude	Longitude
4	36.69435	36.21165
x	y	Elevation (m asl)
292737	4009888	455
Topographical siting	Interpretation	Arch evidence
Not known	4	2
Preservation	Doc evidence	4 Letters
2	2	No
Church	Baptistery	Martyrion
No	No	No
Reliquary	Cemetery	External walls
No	No	Yes
Communal building	Tower	Accommodation
Not known	No	No
Cistern	Presses	Monastery SA
No	No	
Distance to settlement	Nearest settlement	Distance to route Tchalenko
0.69	Set51	<input type="checkbox"/>
Visibility		
Yes		
Notes		
Pena et al 1987 present a vague description only.		

ID	Name	Area
8	Bab'iyān	Jebel Barisha
Location		
2km NW of Kefr Deryan		
Location certainty	Latitude	Longitude
3	36.65023	36.18786
x	y	Elevation (m asl)
288706	4007344	646
Topographical siting	Interpretation	Arch evidence
Not known	5	3
Preservation	Doc evidence	4 Letters
2	0	No
Church	Baptistery	Martyrion
No	No	No
Reliquary	Cemetery	External walls
No	No	No
Communal building	Tower	Accommodation
No	Yes	Not clear
Cistern	Presses	Monastery SA
No	No	
Distance to settlement	Nearest settlement	Distance to route Tchalenko
0.20	Set163	<input type="checkbox"/>
Visibility		
Yes		
Notes		
Seems to be an isolated tower -church belongs to the village.		

ID	Name	Area
	9 Dayr Bashakouh	Jebel Barisha
Location		
4km NW of Kefr Deryan		
Location certainty	Latitude	Longitude
1	36.63592	36.19644
x	y	Elevation (m asl)
287442	4008328	580
Topographical siting	Interpretation	Arch evidence
hilltop	7	3
Preservation	Doc evidence	4 Letters
3	1	No
Church	Baptistery	Martyrion
Yes	No	Yes
Reliquary	Cemetery	External walls
Yes	No	No
Communal building	Tower	Accommodation
Yes	No	Yes
Cistern	Presses	Monastery SA
No	No	
Distance to settlement	Nearest settlement	Distance to route Tchalenko
0.31	Set106	1.66 <input checked="" type="checkbox"/>
Visibility		
Yes		
Notes		
Called 'Bashakuh' by Tchalenko.		

ID	Name	Area
10	Burj Haydar	Jebel Sim'an
Location		
3km N of Bashufan, 4km S. of Brad		
Location certainty	Latitude	Longitude
1	36.9093	36.3446
x	y	Elevation (m asl)
312337	4024329	555
Topographical siting	Interpretation	Arch evidence
slope	7	3
Preservation	Doc evidence	4 Letters
2	0	No
Church	Baptistery	Martyrion
Yes	No	No
Reliquary	Cemetery	External walls
No	No	Yes
Communal building	Tower	Accommodation
Yes	No	Not clear
Cistern	Presses	Monastery SA
No	No	5607
Distance to settlement	Nearest settlement	Distance to route Tchalenko
0.49	Set2	4.95 <input checked="" type="checkbox"/>
Visibility		
Yes		
Notes		
No notes.		

ID	Name	Area
11	Kharab Shams	Jebel Sim'an
Location		
3.6km W of Zuq al-Kabir, 8.9km ENE of Qalat Sim'an		
Location certainty	Latitude	Longitude
1	36.94322	36.34086
x	y	Elevation (m asl)
315386	4023716	541
Topographical siting	Interpretation	Arch evidence
hilltop	7	3
Preservation	Doc evidence	4 Letters
3	0	No
Church	Baptistery	Martyrion
Yes	No	No
Reliquary	Cemetery	External walls
No	Yes	Yes
Communal building	Tower	Accommodation
No	No	Yes
Cistern	Presses	Monastery SA
Yes	Yes	9475
Distance to settlement	Nearest settlement	Distance to route Tchalenko
0.19	Set91	7.06 <input checked="" type="checkbox"/>
Visibility		
Yes		
Notes		
Distance to road may be unreliable: location unclear.		

ID	Name	Area
12	Bashmishli	Jebel Barisha
Location		
3km NW of Kefr Deryan		
Location certainty	Latitude	Longitude
3	36.63545	36.20197
x	y	Elevation (m asl)
287415	4008942	554
Topographical siting	Interpretation	Arch evidence
hilltop	7	4
Preservation	Doc evidence	4 Letters
4	0	No
Church	Baptistery	Martyrion
Yes	Yes	Yes
Reliquary	Cemetery	External walls
No	Yes	No
Communal building	Tower	Accommodation
Yes	Yes	Yes
Cistern	Presses	Monastery SA
Yes	No	
Distance to settlement	Nearest settlement	Distance to route Tchalenko
0.20	Set36	1.21 <input type="checkbox"/>
Visibility		
Yes		
Notes		
6th century basilica (Pena et al 1987).		

ID	Name	Area
13	Bafettin	Jebel Barisha
Location		
2km SW of Kefr Deryan		
Location certainty	Latitude	Longitude
1	36.63813	36.17026
x	y	Elevation (m asl)
287570	4005418	570
Topographical siting	Interpretation	Arch evidence
Not known	7	4
Preservation	Doc evidence	4 Letters
3	2	Yes
Church	Baptistery	Martyrion
Yes	Yes	Yes
Reliquary	Cemetery	External walls
Yes	No	No
Communal building	Tower	Accommodation
Yes	Yes	Yes
Cistern	Presses	Monastery SA
No	No	
Distance to settlement	Nearest settlement	Distance to route Tchalenko
0.00	Set116	1.88 <input checked="" type="checkbox"/>
Visibility		
Yes		
Notes		
5th century basilica on the grounds of its door arrangement (Pena et al 1987); Syriac inscription close to tower; pilgrimage centre?		

ID	Name	Area
14	Douerrih	Jebel Barisha
Location		
Banakfour 2.5km NNW of Dehes. Monastery is 0.6km SE of Banakfour		
Location certainty	Latitude	Longitude
1	36.59608	36.17946
x	y	Elevation (m asl)
283813	4006532	455
Topographical siting	Interpretation	Arch evidence
hilltop	4	4
Preservation	Doc evidence	4 Letters
1	0	No
Church	Baptistery	Martyrion
Yes	No	No
Reliquary	Cemetery	External walls
No	Yes	No
Communal building	Tower	Accommodation
No	No	No
Cistern	Presses	Monastery SA
No	No	
Distance to settlement	Nearest settlement	Distance to route Tchalenko
0.60	Set117	<input checked="" type="checkbox"/>
Visibility		
Yes		
Notes		
Is this really a monastery, or just an isolated church, marking the former position of an ascetic? Graffiti implies pilgrimage centre.		

ID	Name	Area
15	Dayr Banqusa	Jebel Barisha
Location		
2km W of Dayr Sita. Monastery 1km NW.		
Location certainty	Latitude	Longitude
1	36.61193	36.10754
x	y	Elevation (m asl)
285042	3998517	533
Topographical siting	Interpretation	Arch evidence
hilltop	6	4
Preservation	Doc evidence	4 Letters
2	1	No
Church	Baptistery	Martyrion
Yes	No	Yes
Reliquary	Cemetery	External walls
Yes	Yes	Not known
Communal building	Tower	Accommodation
No	Yes	Not known
Cistern	Presses	Monastery SA
No	No	
Distance to settlement	Nearest settlement	Distance to route Tchalenko
0.87	Set118	2.65 <input type="checkbox"/>
Visibility		
No		
Notes		
2 phases: 4/5th & 6th century. Thus very early perhaps?		

ID	Name	Area
16	Baqirha	Jebel Barisha
Location		
1.5km S of Dayr Qita		
Location certainty	Latitude	Longitude
1	36.65980	36.20597
x	y	Elevation (m asl)
289636	4009330	557
Topographical siting	Interpretation	Arch evidence
slope	7	4
Preservation	Doc evidence	4 Letters
5	0	No
Church	Baptistery	Martyrion
Yes	Yes	Yes
Reliquary	Cemetery	External walls
Yes	No	Yes
Communal building	Tower	Accommodation
Yes	Yes	Yes
Cistern	Presses	Monastery SA
No	No	497
Distance to settlement	Nearest settlement	Distance to route Tchalenko
0.05	Set48	0.12 <input type="checkbox"/>
Visibility		
Yes		
Notes		
Visited - possibly became a monastic site later.		

ID	Name	Area
17	Qal'at Sim'an	Jebel Sim'an
Location		
6km N of Dart 'Azza, W slopes of Jebel Sim'an		
Location certainty	Latitude	Longitude
4	36.84418	36.33411
x	y	Elevation (m asl)
306519	4023162	546
Topographical siting	Interpretation	Arch evidence
hilltop	8	5
Preservation	Doc evidence	4 Letters
6	4	No
Church	Baptistry	Martyrion
Yes	Yes	Yes
Reliquary	Cemetery	External walls
No	Yes	Yes
Communal building	Tower	Accommodation
Yes	No	Yes
Cistern	Presses	Monastery SA
No	No	43919
Distance to settlement	Nearest settlement	Distance to route Tchalenko
1.09	Set69	0.13 <input checked="" type="checkbox"/>
Visibility		
Yes		
Notes		
No notes.		

ID	Name	Area
18	Dayr Sim'an (NW)	Jebel Halaqa
Location		
0.6km SW of Qal'at Sim'an, 0.25km NW of Dayr Sim'an centre		
Location certainty	Latitude	Longitude
1	36.83341	36.32856
x	y	Elevation (m asl)
305551	4022792	468
Topographical siting	Interpretation	Arch evidence
valley bottom	8	4
Preservation	Doc evidence	4 Letters
5	4	No
Church	Baptistry	Martyrion
Yes	No	Not clear
Reliquary	Cemetery	External walls
Not known	Yes	Yes
Communal building	Tower	Accommodation
Yes	Yes	Yes
Cistern	Presses	Monastery SA
No	No	3600
Distance to settlement	Nearest settlement	Distance to route Tchalenko
0.40	Set69	0.92 <input checked="" type="checkbox"/>
Visibility		
Yes		
Notes		
No notes.		

ID	Name	Area
19	Qasr al-Brad	Jebel Sim'an
Location		
8km NE of Qalat Sim'an, 0.4km SW of town		
Location certainty	Latitude	Longitude
3	36.89154	36.37958
x	y	Elevation (m asl)
310893	4028099	588
Topographical siting	Interpretation	Arch evidence
hilltop	8	4
Preservation	Doc evidence	4 Letters
4	0	No
Church	Baptistery	Martyrion
Yes	No	Yes
Reliquary	Cemetery	External walls
No	Yes	Yes
Communal building	Tower	Accommodation
Yes	Yes	Yes
Cistern	Presses	Monastery SA
Yes	Yes	6709
Distance to settlement	Nearest settlement	Distance to route Tchalenko
0.74	Set1	2.72 <input checked="" type="checkbox"/>
Visibility		
Yes		
Notes		
No notes.		

ID	Name	Area
20	Dayruna	Jebel Barisha
Location		
N of Baqirha		
Location certainty	Latitude	Longitude
2	36.66029	36.21117
x	y	Elevation (m asl)
289833	4010073	456
Topographical siting	Interpretation	Arch evidence
plain	8	3
Preservation	Doc evidence	4 Letters
3	0	No
Church	Baptistry	Martyrion
Yes	No	Yes
Reliquary	Cemetery	External walls
No	Yes	Yes
Communal building	Tower	Accommodation
Yes	Yes	Yes
Cistern	Presses	Monastery SA
No	Not clear	500
Distance to settlement	Nearest settlement	Distance to route Tchalenko
0.50	Set50	0.88 <input type="checkbox"/>
Visibility		
Yes		
Notes		
Co-ordinates ammended using Tchalenko 1953 (GPS co-ords discarded as unreliable).		

ID	Name	Area
21	Sitt al-Rum	Jebel Halaqa
Location		
3km SW of Qalat Sim'an		
Location certainty	Latitude	Longitude
1	36.8329	36.2998
x	y	Elevation (m asl)
305566	4019761	468
Topographical siting	Interpretation	Arch evidence
slope	7	3
Preservation	Doc evidence	4 Letters
3	0	No
Church	Baptistery	Martyrion
Yes	No	No
Reliquary	Cemetery	External walls
No	No	Yes
Communal building	Tower	Accommodation
Yes	No	Yes
Cistern	Presses	Monastery SA
Not known	Not known	6078
Distance to settlement	Nearest settlement	Distance to route Tchalenko
0.56	Set6	0.13 <input checked="" type="checkbox"/>
Visibility		
Yes		
Notes		
No notes.		

ID	Name	Area
22	Dayr Mishmish	Jebel Sim'an
Location		
9km N of Brad		
Location certainty	Latitude	Longitude
3	36.8896	36.4283
x	y	Elevation (m asl)
310428	4032899	542
Topographical siting	Interpretation	Arch evidence
hilltop	2	1
Preservation	Doc evidence	4 Letters
-1	1	No
Church	Baptistery	Martyrion
Not known	Not known	Not known
Reliquary	Cemetery	External walls
Not known	Not known	Not known
Communal building	Tower	Accommodation
Not known	Not known	Not known
Cistern	Presses	Monastery SA
Not known	Not known	
Distance to settlement	Nearest settlement	Distance to route Tchalenko
1.04	Set78	<input checked="" type="checkbox"/>
Visibility		
Yes		
Notes		
No notes.		

ID	Name	Area	
23	Dayr al-Jamal	Quwayq Plain	
Location			
8km NE of Nubbul, at NE foot of Jabal Sim'an			
Location certainty		Latitude	Longitude
2		36.9934	36.4586
x	y	Elevation (m asl)	
319513	4035691	480	
Topographical siting	Interpretation	Arch evidence	
plain	2	2	
Preservation	Doc evidence	4 Letters	
-1	1	No	
Church	Baptistery	Martyrion	
Not known	Not known	Not known	
Reliquary	Cemetery	External walls	
Not known	Not known	Not known	
Communal building	Tower	Accommodation	
Not known	Not known	Not known	
Cistern	Presses	Monastery SA	
Not known	Not known		
Distance to settlement	Nearest settlement	Distance to route	Tchalenko
7.22	Set93		<input checked="" type="checkbox"/>
Visibility			
No			
Notes			
No notes.			

ID	Name	Area	
24	Kimar	Jebel Sim'an	
Location			
4km N of Brad			
Location certainty	Latitude	Longitude	
3	36.89679	36.42073	
x	y	Elevation (m asl)	
311464	4032654	562	
Topographical siting	Interpretation	Arch evidence	
hilltop	2	3	
Preservation	Doc evidence	4 Letters	
-1	0	No	
Church	Baptistry	Martyrion	
Yes	Not known	Not known	
Reliquary	Cemetery	External walls	
Not known	Not known	Not known	
Communal building	Tower	Accommodation	
Not known	Not known	Not known	
Cistern	Presses	Monastery SA	
Not known	Not known		
Distance to settlement	Nearest settlement	Distance to route	Tchalenko
0.03	Set78		<input checked="" type="checkbox"/>
Visibility			
Yes			
Notes			
Church probably present; Tchalenko (1953 II) claims that a stylite present here.			

ID	Name	Area	
25	Bardkhan	Jebel Halaqa	
Location			
3km NW of Qalat Sim'an			
Location certainty	Latitude	Longitude	
3	36.7810	36.3447	
x	y	Elevation (m asl)	
300782	4024584	272	
Topographical siting	Interpretation	Arch evidence	
hilltop	2	3	
Preservation	Doc evidence	4 Letters	
-1	0	No	
Church	Baptistry	Martyrion	
Yes	No	No	
Reliquary	Cemetery	External walls	
No	Not known	Not known	
Communal building	Tower	Accommodation	
Not known	Not known	Not known	
Cistern	Presses	Monastery SA	
Not known	Not known		
Distance to settlement	Nearest settlement	Distance to route	Tchalenko
1.18	Set71	5.90	<input checked="" type="checkbox"/>
Visibility			
No			
Notes			
No accommodation nearby.			

ID	Name	Area	
26	Atma	Jebel Halaqa	
Location			
13km NE of Dana			
Location certainty	Latitude	Longitude	
2	36.6852	36.3162	
x	y	Elevation (m asl)	
291922	4021743	225	
Topographical siting	Interpretation	Arch evidence	
hilltop	2	2	
Preservation	Doc evidence	4 Letters	
-1	3	Yes	
Church	Baptistry	Martyrion	
Not known	Not known	Not known	
Reliquary	Cemetery	External walls	
Not known	Not known	Not known	
Communal building	Tower	Accommodation	
Not known	Not known	Not known	
Cistern	Presses	Monastery SA	
Not known	Not known		
Distance to settlement	Nearest settlement	Distance to route	Tchalenko
4.80	Set136		<input checked="" type="checkbox"/>
Visibility			
Yes			
Notes			
No notes.			

ID	Name	Area	
27	Dayr Balluta	Jebel Halaqa	
Location			
Probably 1.5km NNW of Atma			
Location certainty		Latitude	Longitude
1		36.6801	36.3382
x		y	Elevation (m asl)
291509		4024075	162
Topographical siting	Interpretation	Arch evidence	
plain	2	1	
Preservation	Doc evidence	4 Letters	
-1	2	Yes	
Church	Baptistry	Martyrion	
Not known	Not known	Not known	
Reliquary	Cemetery	External walls	
Not known	Not known	Not known	
Communal building	Tower	Accommodation	
Not known	Not known	Not known	
Cistern	Presses	Monastery SA	
Not known	Not known		
Distance to settlement	Nearest settlement	Distance to route	Tchalenko
6.79	Set136		<input checked="" type="checkbox"/>
Visibility			
Yes			
Notes			
Hamlet at the foot of Jebel Sim'an, equated with 4 Letters reference (Tchalenko 1953 II).			

ID	Name	Area
28	Mugarat al-Mal'ab	Jebel Halaqa
Location		
W side of Jebel Sim'an		
Location certainty	Latitude	Longitude
3	36.8214	36.3133
x	y	Elevation (m asl)
304528	4021203	489
Topographical siting	Interpretation	Arch evidence
hilltop	2	3 ?
Preservation	Doc evidence	4 Letters
-1	0	No
Church	Baptistry	Martyrion
Not known	Not known	Not known
Reliquary	Cemetery	External walls
Not known	Not known	Not known
Communal building	Tower	Accommodation
Not known	Not known	Not known
Cistern	Presses	Monastery SA
Not known	Not known	
Distance to settlement	Nearest settlement	Distance to route Tchalenko
1.21	Set63	1.28 <input checked="" type="checkbox"/>
Visibility		
Yes		
Notes		
Ruins, but no name. Beware nearest settlement distance perhaps incorrect.		

ID	Name	Area	
29	Kfalludin	Jebel Halaqa	
Location			
7km NW of Dana			
Location certainty		Latitude	Longitude
3		36.7109	36.2657
x	y	Elevation (m asl)	
294415	4016363	387	
Topographical siting	Interpretation	Arch evidence	
hilltop	2	3	
Preservation	Doc evidence	4 Letters	
-1	2	Yes	
Church	Baptistry	Martyrion	
Not known	Not known	Not known	
Reliquary	Cemetery	External walls	
Not known	Not known	Not known	
Communal building	Tower	Accommodation	
Not known	Not known	Not known	
Cistern	Presses	Monastery SA	
Not known	Not known		
Distance to settlement	Nearest settlement	Distance to route	Tchalenko
3.12	Set62		<input checked="" type="checkbox"/>
Visibility			
No			
Notes			
Ruins simply equated with 4 Letters reference on the basis of place name similarity (Tchalenko 1953 II).			

ID	Name	Area	
30	Dart 'Azza	Jebel Sim'an	
Location			
3km NE of Dayr Tell Ada			
Location certainty		Latitude	Longitude
2		36.8487	36.2772
x	y	Elevation (m asl)	
307246	4017221	501	
Topographical siting	Interpretation	Arch evidence	
Not known	1	3	
Preservation	Doc evidence	4 Letters	
0	0	No	
Church	Baptistry	Martyrion	
Yes	Not known	Not known	
Reliquary	Cemetery	External walls	
Not known	Not known	Not known	
Communal building	Tower	Accommodation	
Not known	Not known	Not known	
Cistern	Presses	Monastery SA	
Not known	Not known	1800	
Distance to settlement	Nearest settlement	Distance to route	Tchalenko
0.75	Set9	0.11	<input checked="" type="checkbox"/>
Visibility			
No			
Notes			
Tchalenko (1953 II): a church (still existing) - similar in dimensions to Dayr Turmanin, therefore perhaps this also belonged to a monastery. Everything else has now disappeared, however.			

ID	Name	Area	
31	Farkan	Jebel Sim'an	
Location			
12km SE of Qalat Sim'an			
Location certainty		Latitude	Longitude
1		36.9957	36.3182
x		y	Elevation (m asl)
320110		4021342	427
Topographical siting	Interpretation	Arch evidence	
hilltop	2	1	
Preservation	Doc evidence	4 Letters	
-1	2	Yes	
Church	Baptistry	Martyrion	
Not known	Not known	Not known	
Reliquary	Cemetery	External walls	
Not known	Not known	Not known	
Communal building	Tower	Accommodation	
Not known	Not known	Not known	
Cistern	Presses	Monastery SA	
Not known	Not known		
Distance to settlement	Nearest settlement	Distance to route	Tchalenko
2.67	Set86		<input checked="" type="checkbox"/>
Visibility			
No			
Notes			
Ruined village known, but monastery not. However, perhaps mentioned in 4 letters (Tchalenko 1953 II).			

ID	Name	Area	
32	Kafr Basin	Jebel Sim'an	
Location			
13km E of Dart 'Azza			
Location certainty		Latitude	Longitude
1		37.0182	36.2546
x		y	Elevation (m asl)
322211		4014774	400
Topographical siting	Interpretation	Arch evidence	
hilltop	2	2	
Preservation	Doc evidence	4 Letters	
-1	2	Yes	
Church	Baptistry	Martyrion	
Not known	Not known	Not known	
Reliquary	Cemetery	External walls	
Not known	Not known	Not known	
Communal building	Tower	Accommodation	
Not known	Not known	Not known	
Cistern	Presses	Monastery SA	
Not known	Not known		
Distance to settlement	Nearest settlement	Distance to route	Tchalenko
7.45	Set96		<input checked="" type="checkbox"/>
Visibility			
Not known			
Notes			
One of two villages with same name (other one on Jebel Zawiya).			

ID	Name	Area	
33	Dayr Ahshan	Jebel Halaqa	
Location			
2.3km NW of Dana			
Location certainty		Latitude	Longitude
2		36.76279	36.23325
x	y	Elevation (m asl)	
298945	4012140	406	
Topographical siting	Interpretation	Arch evidence	
Not known	5	3	
Preservation	Doc evidence	4 Letters	
2	2	No	
Church	Baptistery	Martyrion	
Not known	Not known	Not known	
Reliquary	Cemetery	External walls	
Not known	Not known	Not known	
Communal building	Tower	Accommodation	
Not clear	Not known	Not clear	
Cistern	Presses	Monastery SA	
Not known	Not known		
Distance to settlement	Nearest settlement	Distance to route	Tchalenko
0.00	Set134	3.98	<input checked="" type="checkbox"/>
Visibility			
Yes			
Notes			
Not explored by Tchalenko. Co-ordinates changed 5.8.03; investigated by Dan Hull in 2003, a suit of rooms located here, but function not clear.			

ID	Name	Area	
34	Qasr Iblisu	Jebel Barisha	
Location			
1km SW of 'Ain Dalfi			
Location certainty		Latitude	Longitude
1		36.6646	36.2219
x		y	Elevation (m asl)
287586		4012724	301
Topographical siting	Interpretation	Arch evidence	
Not known	6	3	
Preservation	Doc evidence	4 Letters	
-1	0	No	
Church	Baptistery	Martyrion	
Yes	Not known	Not known	
Reliquary	Cemetery	External walls	
Not known	Not known	Not known	
Communal building	Tower	Accommodation	
Not clear	Not known	Not clear	
Cistern	Presses	Monastery SA	
Not known	Not known		
Distance to settlement	Nearest settlement	Distance to route	Tchalenko
0.00	Set135	0.50	<input checked="" type="checkbox"/>
Visibility			
Yes			
Notes			
Details relate to W church; see Butler (1907) for further details.			

ID	Name	Area
35	Qasr al-Banat	Jebel Halaqa
Location		
10km E of Imma/Yeni Sehir. Now between Syrian and Turkish borders (technically on Syrian side)		
Location certainty	Latitude	Longitude
1	36.6723	36.2284
x	y	Elevation (m asl)
290834	4012466	368
Topographical siting	Interpretation	Arch evidence
valley bottom	7	4
Preservation	Doc evidence	4 Letters
4	4	Yes
Church	Baptistery	Martyrion
Yes	Not known	Not known
Reliquary	Cemetery	External walls
Not known	Not known	Yes
Communal building	Tower	Accommodation
Yes	Yes	Yes
Cistern	Presses	Monastery SA
Not known	Not known	15088
Distance to settlement	Nearest settlement	Distance to route Tchalenko
1.82	Set61 (or Set54)	0.13 <input checked="" type="checkbox"/>
Visibility		
No		
Notes		
Quarry present; settlement surface area refers to 'Set61'; beware - four places called Qasr al-Banat in limestone massif; see Butler 1920 for more details		

ID	Name	Area
36	Dayr al-Malik	Jebel Halaqa
Location		
Border of the Plain of Dana, immediately above Dayr Ahshan		
Location certainty	Latitude	Longitude
1	36.7460	36.2273
x	y	Elevation (m asl)
298999	4012428	432
Topographical siting	Interpretation	Arch evidence
hilltop	2	2
Preservation	Doc evidence	4 Letters
-1	1	No
Church	Baptistry	Martyrion
Not known	Not known	Not known
Reliquary	Cemetery	External walls
Not known	Not known	Not known
Communal building	Tower	Accommodation
Not known	Not known	Not known
Cistern	Presses	Monastery SA
Not known	Not known	
Distance to settlement	Nearest settlement	Distance to route Tchalenko
0.28	Set134	<input checked="" type="checkbox"/>
Visibility		
Yes		
Notes		
Not explored by Tchalenko (1953 II).		

ID	Name	Area	
37	Burj al-Sab	Jebel Halaqa	
Location			
Just N of the village of Tell 'Ada, 1.5km W of Tell Ada			
Location certainty		Latitude	Longitude
1		36.8011	36.2528
x	y	Elevation (m asl)	
302751	4014863	472	
Topographical siting	Interpretation	Arch evidence	
hilltop	2	4	
Preservation	Doc evidence	4 Letters	
-1	5	Yes	
Church	Baptistry	Martyrion	
Not known	Not known	Not known	
Reliquary	Cemetery	External walls	
Not known	Not known	Not known	
Communal building	Tower	Accommodation	
Not known	Not known	Not known	
Cistern	Presses	Monastery SA	
Not known	Not known		
Distance to settlement	Nearest settlement	Distance to route	Tchalenko
0.52	Set31	1.98	<input checked="" type="checkbox"/>
Visibility			
Yes			
Notes			
Tower present; 4 letters reference is a 'perhaps' according to Tchalenko (1953, II).			

ID	Name	Area
38	Basufan	Jebel Sim'an
Location		
3km NE of alat Sim'an		
Location certainty	Latitude	Longitude
5	36.87642	36.34127
x	y	Elevation (m asl)
309404	4023905	610
Topographical siting	Interpretation	Arch evidence
Not known	2	2
Preservation	Doc evidence	4 Letters
-1	2	Yes
Church	Baptistery	Martyrion
Yes	Not known	Not known
Reliquary	Cemetery	External walls
Not known	Not known	Not known
Communal building	Tower	Accommodation
Not known	Not known	Not known
Cistern	Presses	Monastery SA
Not known	Not known	
Distance to settlement	Nearest settlement	Distance to route Tchalenko
0.00	Set68	<input checked="" type="checkbox"/>
Visibility		
Yes		
Notes		
Inscription of 491/2 in Syriac: 'St.Phocas church'.		

ID	Name	Area
39	Sheikh Barakat	Jebel Halaqa
Location		
2km NW of Dayr Tell Ada		
Location certainty	Latitude	Longitude
1	36.8001	36.2659
x	y	Elevation (m asl)
302707	4016239	473
Topographical siting	Interpretation	Arch evidence
slope	2	2
Preservation	Doc evidence	4 Letters
-1	0	No
Church	Baptistery	Martyrion
No	Not known	No
Reliquary	Cemetery	External walls
No	Not known	Not known
Communal building	Tower	Accommodation
Not known	Not known	Not known
Cistern	Presses	Monastery SA
Not known	Not known	
Distance to settlement	Nearest settlement	Distance to route Tchalenko
1.34	Set34	<input type="checkbox"/>
Visibility		
No		
Notes		
Located on Tchalenko (1953 I, CCIV, but a mention only in LIV).		

ID	Name	Area	
40	Brad (N)	Jebel Sim'an	
Location			
north of town (not known where)			
Location certainty		Latitude	Longitude
4		36.9064	36.3983
x	y	Elevation (m asl)	
311994	4029737	569	
Topographical siting	Interpretation	Arch evidence	
Not known	2	4	
Preservation	Doc evidence	4 Letters	
-1	0	No	
Church	Baptistery	Martyrion	
Not known	Not known	Not known	
Reliquary	Cemetery	External walls	
Not known	Not known	Not known	
Communal building	Tower	Accommodation	
Not known	Not known	Not known	
Cistern	Presses	Monastery SA	
Not known	Not known		
Distance to settlement	Nearest settlement	Distance to route	Tchalenko
1.36	Set1		<input checked="" type="checkbox"/>
Visibility			
Yes			
Notes			
Tchalenko refers to this site, but describes it as simply 'inedit' (1953 II).			

ID	Name	Area
41	Dayr Sim'an (SW)	Jebel Halaqa
Location		
0.8km SW of Qalat Sim'an, 0.2km WSW of Dayr Sim'an centre		
Location certainty	Latitude	Longitude
1	36.83349	36.32615
x	y	Elevation (m asl)
305585	4022519	490
Topographical siting	Interpretation	Arch evidence
valley bottom	7	4
Preservation	Doc evidence	4 Letters
5	4	No
Church	Baptistery	Martyrion
Yes	No	Yes
Reliquary	Cemetery	External walls
No	Yes	Yes
Communal building	Tower	Accommodation
Yes	No	Yes
Cistern	Presses	Monastery SA
Yes	Yes	4273
Distance to settlement	Nearest settlement	Distance to route Tchalenko
0.18	Set69	0.77 <input checked="" type="checkbox"/>
Visibility		
Yes		
Notes		
No notes.		

ID	Name	Area	
42	Dayr Sim'an (SE)	Jebel Halaqa	
Location			
0.4km SSW of Qalat Sim'an, 0.25km E of Dayr Sim'an centre			
Location certainty		Latitude	Longitude
1		36.83986	36.32686
x		y	Elevation (m asl)
306160		4022555	498
Topographical siting	Interpretation	Arch evidence	
valley bottom	6	4	
Preservation	Doc evidence	4 Letters	
3	4	No	
Church	Baptistery	Martyrion	
Yes	Not clear	Not clear	
Reliquary	Cemetery	External walls	
No	Yes	Yes	
Communal building	Tower	Accommodation	
Yes	No	Yes	
Cistern	Presses	Monastery SA	
Yes	No	8548	
Distance to settlement	Nearest settlement	Distance to route	Tchalenko
0.44	Set69	0.26	<input checked="" type="checkbox"/>
Visibility			
Yes			
Notes			
Referred to by Butler (1920) and Burns (1999) as the 'pandocheion' (originally from de Vogue 108); however, Tchalenko (1953, II) describes it simply as a 'couvent'			

ID	Name	Area
43	Burj Dayr 'Aman	Jebel Halaqa
Location		
Dar 'Aman is 5km E of Dana. Complex is...		
Location certainty	Latitude	Longitude
1	36.81923	36.20297
x	y	Elevation (m asl)
304508	4009565	449
Topographical siting	Interpretation	Arch evidence
slope	6	3
Preservation	Doc evidence	4 Letters
2	2	Yes
Church	Baptistery	Martyrion
No	No	No
Reliquary	Cemetery	External walls
No	No	No
Communal building	Tower	Accommodation
Yes	Yes	Yes
Cistern	Presses	Monastery SA
Yes	Yes	1154
Distance to settlement	Nearest settlement	Distance to route Tchalenko
0.97	Set120	3.66 <input checked="" type="checkbox"/>
Visibility		
Yes		
Notes		
2 churches described by Butler (1920, 240); however, this name applies to complex with tower; according to 4 Letters, inhabited by a monk called 'Giorgis'		

ID	Name	Area
44	Tuqad	Jebel Sim'an
Location		
9km E of Dana, 8km NE of Tirib		
Location certainty	Latitude	Longitude
3	36.8555	36.1928
x	y	Elevation (m asl)
307849	4008467	474
Topographical siting	Interpretation	Arch evidence
hilltop	2	2
Preservation	Doc evidence	4 Letters
-1	2	Yes
Church	Baptistery	Martyrion
Not known	Not known	Not known
Reliquary	Cemetery	External walls
Not known	Not known	Not known
Communal building	Tower	Accommodation
Not known	Not known	Not known
Cistern	Presses	Monastery SA
Not known	Not known	
Distance to settlement	Nearest settlement	Distance to route Tchalenko
0.07	Set43	<input checked="" type="checkbox"/>
Visibility		
Yes		
Notes		
Village located, monastery either not located or destroyed.		

ID	Name	Area	
45	Arhab	Jebel Halaqa	
Location			
7km E of Dana			
Location certainty	Latitude	Longitude	
4	36.8453	36.1939	
x	y	Elevation (m asl)	
306895	4008544	400	
Topographical siting	Interpretation	Arch evidence	
valley bottom	2	-1	
Preservation	Doc evidence	4 Letters	
-1	2	Yes	
Church	Baptistry	Martyrion	
Not known	Not known	Not known	
Reliquary	Cemetery	External walls	
Not known	Not known	Not known	
Communal building	Tower	Accommodation	
Not known	Not known	Not known	
Cistern	Presses	Monastery SA	
Not known	Not known		
Distance to settlement	Nearest settlement	Distance to route	Tchalenko
0.06	Set97		<input checked="" type="checkbox"/>
Visibility			
Yes			
Notes			
Site certainty unclear; according to 4 Letters, inhabited by a monk called 'Shemon'.			

ID	Name	Area
46	Sahhra	Jebel Halaqa
Location		
5km N of Tirib		
Location certainty	Latitude	Longitude
3	36.8349	36.1765
x	y	Elevation (m asl)
305983	4006766	424
Topographical siting	Interpretation	Arch evidence
slope	2	2
Preservation	Doc evidence	4 Letters
-1	3	Yes
Church	Baptistry	Martyrion
Not known	Not known	Not known
Reliquary	Cemetery	External walls
Not known	Not known	Not known
Communal building	Tower	Accommodation
Not known	Not known	Not known
Cistern	Presses	Monastery SA
Not known	Not known	
Distance to settlement	Nearest settlement	Distance to route Tchalenko
0.03	Set98	<input checked="" type="checkbox"/>
Visibility		
Yes		
Notes		
Village located; monastery known from 4 letters, but no site.		

ID	Name	Area
47	Tell Aqibrin	Jebel Halaqa
Location		
3km S of Dana, on the Antioch-Beroea route		
Location certainty	Latitude	Longitude
1	36.7642	36.1779
x	y	Elevation (m asl)
299973	4007368	401
Topographical siting	Interpretation	Arch evidence
slope	2	2
Preservation	Doc evidence	4 Letters
-1	2	Yes
Church	Baptistry	Martyrion
Not known	Not known	Not known
Reliquary	Cemetery	External walls
Not known	Not known	Not known
Communal building	Tower	Accommodation
Not known	Not clear	Not known
Cistern	Presses	Monastery SA
Not known	Not known	
Distance to settlement	Nearest settlement	Distance to route Tchalenko
0.62	Set19	<input checked="" type="checkbox"/>
Visibility		
Yes		
Notes		
Village located; monastery known from 4 letters, but site unclear. Perhaps tower c.0.25km S of village.		

ID	Name	Area	
48	Tirib	Plain of Chalcis	
Location			
In the Plain of Chalcis, at the bifurcation of roads to Chalcis and Beroea, just S of Jebel Halaqa			
Location certainty		Latitude	Longitude
4		36.8187	36.1291
x		y	Elevation (m asl)
304566		4001726	
Topographical siting	Interpretation	Arch evidence	
plain	2	2	
Preservation	Doc evidence	4 Letters	
-1	3	Yes	
Church	Baptistry	Martyrion	
Not known	Not known	Not known	
Reliquary	Cemetery	External walls	
Not known	Not known	Not known	
Communal building	Tower	Accommodation	
Not known	Not known	Not known	
Cistern	Presses	Monastery SA	
Not known	Not known		
Distance to settlement	Nearest settlement	Distance to route	Tchalenko
0.05	Set99		<input checked="" type="checkbox"/>
Visibility			
Yes			
Notes			
Village located; monastery known from 4 letters. A tell present also.			

ID	Name	Area
49	Kafr Karmin	Jebel Halaqa
Location		
4km NW of Tirib on E slope of Jebel Srir		
Location certainty	Latitude	Longitude
3	36.8006	36.1397
x	y	Elevation (m asl)
301011	4004700	352
Topographical siting	Interpretation	Arch evidence
Not known	2	2
Preservation	Doc evidence	4 Letters
-1	3	Yes
Church	Baptistry	Martyrion
Not known	Not known	Not known
Reliquary	Cemetery	External walls
Not known	Not known	Not known
Communal building	Tower	Accommodation
Not known	Not known	Not known
Cistern	Presses	Monastery SA
Not known	Not known	
Distance to settlement	Nearest settlement	Distance to route Tchalenko
0.00	Set100	<input checked="" type="checkbox"/>
Visibility		
Yes		
Notes		
350 orthodox monks killed here in 517 (Tchalenko 1953 II, 98).		

ID	Name	Area
50	Qal'at Sirmada	Jebel Barisha
Location		
1km S of village of Simada		
Location certainty	Latitude	Longitude
1	36.71077	36.17396
x	y	Elevation (m asl)
293884	4006148	377
Topographical siting	Interpretation	Arch evidence
hilltop	7	2
Preservation	Doc evidence	4 Letters
3	4	Yes
Church	Baptistry	Martyrion
Yes	Not known	No
Reliquary	Cemetery	External walls
No	No	Yes
Communal building	Tower	Accommodation
Not known	No	Yes
Cistern	Presses	Monastery SA
Yes	No	
Distance to settlement	Nearest settlement	Distance to route Tchalenko
1.08	Set101	1.07 <input checked="" type="checkbox"/>
Visibility		
Yes		
Notes		
Village located in Tchalenko (1953 II); see Pena et al (1987) for Qal'at Sarmada - 1km S of village; heavily remodelled in medieval period.		

ID	Name	Area
51	Dayr Ayzara A	Jebel Barisha
Location		
Probably the same as called 'Ed-Deir - Me'ez' by Tchalenko; 1.6km E of village of Mi'az		
Location certainty	Latitude	Longitude
4	36.67610	36.14664
x	y	Elevation (m asl)
290923	4002715	397
Topographical siting	Interpretation	Arch evidence
valley bottom	7	3
Preservation	Doc evidence	4 Letters
3	1	No
Church	Baptistery	Martyrion
Yes	No	No
Reliquary	Cemetery	External walls
No	Yes	No
Communal building	Tower	Accommodation
Yes	No	Not clear
Cistern	Presses	Monastery SA
Yes	Yes	
Distance to settlement	Nearest settlement	Distance to route Tchalenko
1.25	Set139	1.33 <input type="checkbox"/>
Visibility		
Yes		
Notes		
Ruins, but unclear; Pena et al (1987): 'un edifice'. Funerary chapel present. Pilgrims' graffiti present.		

ID	Name	Area	
52	Batabu	Plain of Chalcis	
Location			
7km E of Tirib			
Location certainty		Latitude	Longitude
3		36.7530	36.0825
x	y	Elevation (m asl)	
298600	3996744		
Topographical siting	Interpretation	Arch evidence	
plain	2	3	
Preservation	Doc evidence	4 Letters	
-1	2	Yes	
Church	Baptistry	Martyrion	
Not known	Not known	Not known	
Reliquary	Cemetery	External walls	
Not known	Not known	Not known	
Communal building	Tower	Accommodation	
Not known	Not known	Not known	
Cistern	Presses	Monastery SA	
Not known	Not known		
Distance to settlement	Nearest settlement	Distance to route	Tchalenko
0.04	Set102		<input checked="" type="checkbox"/>
Visibility			
Yes			
Notes			
Close to settlement of 'Kelle'? (Location of which is unclear, so not plotted).			

ID	Name	Area
53	Kafr Daryan	Jebel Barisha
Location		
Previously SAME AS NO.82!		
Location certainty	Latitude	Longitude
3	36.66937	36.17180
x	y	Elevation (m asl)
290385	4005521	455
Topographical siting	Interpretation	Arch evidence
hilltop	6	4
Preservation	Doc evidence	4 Letters
4	3	Yes
Church	Baptistery	Martyrion
Yes	Not clear	No
Reliquary	Cemetery	External walls
No	No	Yes
Communal building	Tower	Accommodation
Yes	No	Not clear
Cistern	Presses	Monastery SA
Yes	No	1950
Distance to settlement	Nearest settlement	Distance to route Tchalenko
0.95	Set39	1.83 <input checked="" type="checkbox"/>
Visibility		
Yes		
Notes		
SAME AS 82 - called 'Ed Deir by Tchalenko Vol III p91; large structure unclear, but almost certainly not a church.		

ID	Name	Area	
54	Ibazmu	Jebel Sim'an	
Location			
5km NE Tirib			
Location certainty		Latitude	Longitude
3		36.8517	36.1624
x	y	Elevation (m asl)	
307539	4005261	398	
Topographical siting	Interpretation	Arch evidence	
slope	2	1	
Preservation	Doc evidence	4 Letters	
-1	2	Yes	
Church	Baptistry	Martyrion	
Not known	Not known	Not known	
Reliquary	Cemetery	External walls	
Not known	Not known	Not known	
Communal building	Tower	Accommodation	
Not known	Not known	Not known	
Cistern	Presses	Monastery SA	
Not known	Not known		
Distance to settlement	Nearest settlement	Distance to route	Tchalenko
0.05	Set103		<input checked="" type="checkbox"/>
Visibility			
Yes			
Notes			
Site not found; monastery known from 4 Letters.			

ID	Name	Area
55	Imma	Jebel Barisha
Location		
Modern town of Yeni Sehir		
Location certainty	Latitude	Longitude
3	36.5655	36.2401
x	y	Elevation (m asl)
280657	4013802	176
Topographical siting	Interpretation	Arch evidence
plain	2	1
Preservation	Doc evidence	4 Letters
-1	5	Yes
Church	Baptistery	Martyrion
Not known	Not known	Not known
Reliquary	Cemetery	External walls
Not known	Not known	Not known
Communal building	Tower	Accommodation
Not known	Not known	Not known
Cistern	Presses	Monastery SA
Not known	Not known	
Distance to settlement	Nearest settlement	Distance to route Tchalenko
0.19	Set5	<input checked="" type="checkbox"/>
Visibility		
Yes		
Notes		
Site not found: now under Yeni Sehir; mentioned in Theodoret of Cyrrihus (Palladios) and 4 letters. Abraames and Maronia also lived close by (see life of St.Jerome).		

ID	Name	Area	
56	Qasr al Mudakhar	Jebel Barisha	
Location			
3km NW of Bab al-Hawa			
Location certainty	Latitude	Longitude	
3	36.6960	36.2151	
x	y	Elevation (m asl)	
293088	4011019	401	
Topographical siting	Interpretation	Arch evidence	
hilltop	1	3	
Preservation	Doc evidence	4 Letters	
2	2	Yes	
Church	Baptistery	Martyrion	
Yes	Not known	Not known	
Reliquary	Cemetery	External walls	
Not known	Not known	Not known	
Communal building	Tower	Accommodation	
Not known	Not known	Not known	
Cistern	Presses	Monastery SA	
Not known	Not known		
Distance to settlement	Nearest settlement	Distance to route	Tchalenko
0.52	Set108		<input checked="" type="checkbox"/>
Visibility			
Yes			
Notes			
Only church identified; Pena et al 1987 claim 4 Letters reference.			

ID	Name	Area
57	Ba'uda	Jebel Barisha
Location		
4km NW of Sirmada		
Location certainty	Latitude	Longitude
3	36.69524	36.21772
x	y	Elevation (m asl)
292833	4010560	417
Topographical siting	Interpretation	Arch evidence
Not known	2	2
Preservation	Doc evidence	4 Letters
2	2	Yes
Church	Baptistry	Martyrion
Yes	Not known	Not known
Reliquary	Cemetery	External walls
Not known	Not known	Not known
Communal building	Tower	Accommodation
Not known	Not known	Not known
Cistern	Presses	Monastery SA
Not known	Not known	
Distance to settlement	Nearest settlement	Distance to route Tchalenko
0.00	Set108	<input checked="" type="checkbox"/>
Visibility		
Yes		
Notes		
Tchalenko (1953 II): requires excavation to identify church; see further details in Butler 1920.		

ID	Name	Area
58	Brayj	Jebel Barisha
Location		
1.6km SE of Kfayr, 2.4km S of Babisqa		
Location certainty	Latitude	Longitude
3	36.68102	36.19946
x	y	Elevation (m asl)
291506	4008564	397
Topographical siting	Interpretation	Arch evidence
valley bottom	7	3
Preservation	Doc evidence	4 Letters
4	2	Yes
Church	Baptistery	Martyrion
No	No	Yes
Reliquary	Cemetery	External walls
No	Yes	No
Communal building	Tower	Accommodation
Yes	Yes	Yes
Cistern	Presses	Monastery SA
No	Yes	1900
Distance to settlement	Nearest settlement	Distance to route Tchalenko
1.25	Set52	0.58 <input checked="" type="checkbox"/>
Visibility		
No		
Notes		
Visit scheduled; church or not? My view is not. Mattern (1944) view is yes.		

ID	Name	Area
59	Ksajba	Jebel Barisha
Location		
0.5km SE of Ba'uda, 0.5km NW of Ksajba village (c.0.5km N of the W basilica), 3km NW of Sirmada		
Location certainty	Latitude	Longitude
5	36.70320	36.21005
x	y	Elevation (m asl)
293528	4009692	492
Topographical siting	Interpretation	Arch evidence
hilltop	6	3
Preservation	Doc evidence	4 Letters
2	2	Yes
Church	Baptistry	Martyrion
No	No	Yes
Reliquary	Cemetery	External walls
No	Yes	Not clear
Communal building	Tower	Accommodation
No	No	Yes
Cistern	Presses	Monastery SA
No	Yes	150
Distance to settlement	Nearest settlement	Distance to route Tchalenko
0.24	Set119	0.59 <input checked="" type="checkbox"/>
Visibility		
Yes		
Notes		
Pena et al: 2 x presses, no church, but accommodation; Pena et al (1987) claim this to be among the oldest monasteries of Jabal Barisha, but it is not clear why.		

ID	Name	Area
60	Artah	Amuq Plain
Location		
Not identified, but prob close to Rihaniya.		
Location certainty	Latitude	Longitude
4	36.5657	36.2629
x	y	Elevation (m asl)
280607	4016318	
Topographical siting	Interpretation	Arch evidence
plain	2	-1
Preservation	Doc evidence	4 Letters
-1	3	Yes
Church	Baptistery	Martyrion
Not known	Not known	Not known
Reliquary	Cemetery	External walls
Not known	Not known	Not known
Communal building	Tower	Accommodation
Not known	Not known	Not known
Cistern	Presses	Monastery SA
Not known	Not known	
Distance to settlement	Nearest settlement	Distance to route Tchalenko
0.00	Set137	<input checked="" type="checkbox"/>
Visibility		
Yes		
Notes		
Site not found: now under Reyhanli; documentary references in 4 Letters and Michael the Syrian.		

ID	Name	Area
61	Bab al Hawa (S)	Jebel Barisha
Location		
W of the Plain of Dana, close to Antioch-Beroea route		
Location certainty	Latitude	Longitude
4	36.7198	36.1980
x	y	Elevation (m asl)
295355	4009098	372
Topographical siting	Interpretation	Arch evidence
slope	4	2
Preservation	Doc evidence	4 Letters
2	0	No
Church	Baptistry	Martyrion
Yes	Not known	Not known
Reliquary	Cemetery	External walls
Not known	No	Yes
Communal building	Tower	Accommodation
Not clear	No	Yes
Cistern	Presses	Monastery SA
Not known	Not known	10500
Distance to settlement	Nearest settlement	Distance to route Tchalenko
0.38	Set25	<input checked="" type="checkbox"/>
Visibility		
No		
Notes		
Perhaps a monastery, but Tchalenko (1953 II) considers it an imperial residence. Perhaps an administrative structure?		

ID	Name	Area	
62	Qasr al-Dayr	Jebel al-A'la	
Location			
4.5km E of Tarib			
Location certainty	Latitude	Longitude	
3	36.5700	36.1365	
x	y	Elevation (m asl)	
281144	4002549		
Topographical siting	Interpretation	Arch evidence	
hilltop	2	3	
Preservation	Doc evidence	4 Letters	
-1	1	No	
Church	Baptistry	Martyrion	
Not known	Not known	Not known	
Reliquary	Cemetery	External walls	
Not known	Not known	Not known	
Communal building	Tower	Accommodation	
Not known	Not known	Not known	
Cistern	Presses	Monastery SA	
Not known	Not known		
Distance to settlement	Nearest settlement	Distance to route	Tchalenko
0.61	Set115	9.92	<input checked="" type="checkbox"/>
Visibility			
No			
Notes			
Ruins, but no name; place name evidence only, thus rather unclear.			

ID	Name	Area
63	Dayr Qita	Jebel Barisha
Location		
3.4km ENE of Bab al Hawa		
Location certainty	Latitude	Longitude
2	36.66606	36.21582
x	y	Elevation (m asl)
290257	4010261	483
Topographical siting	Interpretation	Arch evidence
hilltop	6	4
Preservation	Doc evidence	4 Letters
4	1	No
Church	Baptistry	Martyrion
Yes	Yes	Not clear
Reliquary	Cemetery	External walls
Not known	Yes	Yes
Communal building	Tower	Accommodation
Yes	Yes	Yes
Cistern	Presses	Monastery SA
No	Not clear	1355
Distance to settlement	Nearest settlement	Distance to route Tchalenko
0.03	Set50	1.09 <input checked="" type="checkbox"/>
Visibility		
Yes		
Notes		
NE church not certainly, but probably, a monastery; presses 30m N & 80m NW of church; distance = NE church to centre of village		

ID	Name	Area
64	Burj al-Mu'allaq	Jebel Barisha
Location		
10km S of Harran, just S of the border		
Location certainty	Latitude	Longitude
3	36.59730	36.21350
x	y	Elevation (m asl)
284016	4010305	442
Topographical siting	Interpretation	Arch evidence
slope	6	3
Preservation	Doc evidence	4 Letters
3	0	No
Church	Baptistry	Martyrion
Yes	No	No
Reliquary	Cemetery	External walls
No	Yes	No
Communal building	Tower	Accommodation
No	Yes	No
Cistern	Presses	Monastery SA
No	No	
Distance to settlement	Nearest settlement	Distance to route Tchalenko
0.64	Set138	0.47 <input type="checkbox"/>
Visibility		
Yes		
Notes		
No notes.		

ID	Name	Area
65	Burj Nimra	Jebel Barisha
Location		
3km S of Sirmada		
Location certainty	Latitude	Longitude
3	36.72323	36.15511
x	y	Elevation (m asl)
295186	4003554	371
Topographical siting	Interpretation	Arch evidence
slope	6	3
Preservation	Doc evidence	4 Letters
3	0	No
Church	Baptistery	Martyrion
No	No	Yes
Reliquary	Cemetery	External walls
No	Yes	No
Communal building	Tower	Accommodation
Yes	Yes	Not clear
Cistern	Presses	Monastery SA
Yes	Yes	
Distance to settlement	Nearest settlement	Distance to route Tchalenko
2.21	Set3	0.71 <input type="checkbox"/>
Visibility		
Yes		
Notes		
No church, unclear whether this is a monastery or not. Mentioned at monastic synod of 567 (Tchalenko 1953 II).		

ID	Name	Area
66	Shaykh Bahar	Jebel Barisha
Location		
Extreme S of Jabal Barisha, c. 1.5km NE of Qasr Tannur, 0.8km E of settlement by same name		
Location certainty	Latitude	Longitude
5	36.58138	36.05071
x	y	Elevation (m asl)
282135	3992280	299
Topographical siting	Interpretation	Arch evidence
slope	4	2
Preservation	Doc evidence	4 Letters
1	0	No
Church	Baptistery	Martyrion
No	No	No
Reliquary	Cemetery	External walls
No	No	No
Communal building	Tower	Accommodation
No	No	Not known
Cistern	Presses	Monastery SA
Yes	No	
Distance to settlement	Nearest settlement	Distance to route Tchalenko
0.66	Set133	<input type="checkbox"/>
Visibility		
Yes		
Notes		
This site is very uncertain -probably purely agricultural with no monastic association.		

ID	Name	Area
67	Qasr Tannur	Jebel Barisha
Location		
0.8km S of Shaykh Bahar		
Location certainty	Latitude	Longitude
3	36.57474	36.04170
x	y	Elevation (m asl)
281512	3991295	327
Topographical siting	Interpretation	Arch evidence
valley bottom	6	2
Preservation	Doc evidence	4 Letters
2	0	No
Church	Baptistery	Martyrion
Yes	No	No
Reliquary	Cemetery	External walls
No	No	No
Communal building	Tower	Accommodation
No	Yes	Yes
Cistern	Presses	Monastery SA
No	No	
Distance to settlement	Nearest settlement	Distance to route Tchalenko
0.71	Set133	0.57 <input type="checkbox"/>
Visibility		
Yes		
Notes		
This site is uncertain - probably merely a church with associated structure(s).		

ID	Name	Area
68	Dayr Dehes	Jebel Barisha
Location		
0.5km SW of Dehes, 0.4km E of Duayr Rih		
Location certainty	Latitude	Longitude
3	36.62525	36.17561
x	y	Elevation (m asl)
286426	4006040	580
Topographical siting	Interpretation	Arch evidence
slope	8	4
Preservation	Doc evidence	4 Letters
4	1	No
Church	Baptistery	Martyrion
Yes	No	Yes
Reliquary	Cemetery	External walls
Yes	Yes	Yes
Communal building	Tower	Accommodation
Yes	Yes	Yes
Cistern	Presses	Monastery SA
Yes	Yes	1530
Distance to settlement	Nearest settlement	Distance to route Tchalenko
0.60	Set107	3.01 <input checked="" type="checkbox"/>
Visibility		
Yes		
Notes		
Biscop (1997). Discussed also by Pena et al (1987), especially the martyrion.		

ID	Name	Area
69	Dayr Sakhur	Jebel Barisha
Location		
1km SE of Brayj		
Location certainty	Latitude	Longitude
2	36.68608	36.19292
x	y	Elevation (m asl)
291944	4007828	404
Topographical siting	Interpretation	Arch evidence
hilltop	6	
Preservation	Doc evidence	4 Letters
2	1	No
Church	Baptistery	Martyrion
No	No	No
Reliquary	Cemetery	External walls
No	No	No
Communal building	Tower	Accommodation
Not known	Yes	Not known
Cistern	Presses	Monastery SA
Yes	Yes	
Distance to settlement	Nearest settlement	Distance to route Tchalenko
0.64	Set46	0.38 <input type="checkbox"/>
Visibility		
No		
Notes		
Possibly not a monastery - perhaps agricultural use only.		

ID	Name	Area
70	Burj Jamur	Jebel Barisha
Location		
c.1km S of Brayj (c.2-300m SW of Dayr Sakhur)		
Location certainty	Latitude	Longitude
3	36.68231	36.19307
x	y	Elevation (m asl)
291605	4007853	387
Topographical siting	Interpretation	Arch evidence
hilltop	6	
Preservation	Doc evidence	4 Letters
1	0	No
Church	Baptistery	Martyrion
No	No	No
Reliquary	Cemetery	External walls
No	No	No
Communal building	Tower	Accommodation
Not known	Yes	Not known
Cistern	Presses	Monastery SA
No	No	
Distance to settlement	Nearest settlement	Distance to route Tchalenko
0.87	Set46	0.50 <input type="checkbox"/>
Visibility		
No		
Notes		
Very scant evidence, a tower only, with 'some rooms' (Pena et al 1987).		

ID	Name	Area
71	Burj Yahya	Jebel Barisha
Location		
1.5km SE of Brayj, 300m S of Burj Jamur		
Location certainty	Latitude	Longitude
3	36.68657	36.19021
x	y	Elevation (m asl)
291981	4007527	421
Topographical siting	Interpretation	Arch evidence
hilltop	6	
Preservation	Doc evidence	4 Letters
2	0	No
Church	Baptistery	Martyrion
No	No	No
Reliquary	Cemetery	External walls
No	Yes	No
Communal building	Tower	Accommodation
Not known	Yes	Not known
Cistern	Presses	Monastery SA
No	Yes	
Distance to settlement	Nearest settlement	Distance to route Tchalenko
0.40	Set46	0.64 <input type="checkbox"/>
Visibility		
Yes		
Notes		
Scant evidence: a tower, some rooms and a press.		

ID	Name	Area
72	Qal'at Dabula	Jebel Barisha
Location		
1km N of Dayr Sita		
Location certainty	Latitude	Longitude
3	36.64468	36.11250
x	y	Elevation (m asl)
288004	3998995	444
Topographical siting	Interpretation	Arch evidence
slope	4	
Preservation	Doc evidence	4 Letters
2	0	No
Church	Baptistery	Martyrion
No	No	No
Reliquary	Cemetery	External walls
No	No	No
Communal building	Tower	Accommodation
Not known	No	Not known
Cistern	Presses	Monastery SA
Yes	Yes	
Distance to settlement	Nearest settlement	Distance to route Tchalenko
0.93	Set121	<input type="checkbox"/>
Visibility		
Yes		
Notes		
Possibly not a monastery - perhaps agricultural; but Pena et al (1987) claim early 4th century (though not clear why).		

ID	Name	Area
73	Qal'at al-Brayj	Jebel Barisha
Location		
1.5km SW of Dayr Sita, overlooking Plain of Chalcis		
Location certainty	Latitude	Longitude
1	36.64473	36.09423
x	y	Elevation (m asl)
287959	3996968	461
Topographical siting	Interpretation	Arch evidence
hilltop	6	
Preservation	Doc evidence	4 Letters
2	0	No
Church	Baptistery	Martyrion
No	No	No
Reliquary	Cemetery	External walls
No	Yes	No
Communal building	Tower	Accommodation
Not known	Yes	Not known
Cistern	Presses	Monastery SA
No	No	
Distance to settlement	Nearest settlement	Distance to route
0.70	Set154	0.71
Visibility		
Yes		
Notes		
No notes.		

ID	Name	Area	
74	Al-Qal'at	Jebel Barisha	
Location			
0.5km ENE of Dayr Sita			
Location certainty		Latitude	Longitude
3		36.64694	36.10494
x	y	Elevation (m asl)	
288187	3998152	476	
Topographical siting	Interpretation	Arch evidence	
slope	4		
Preservation	Doc evidence	4 Letters	
3	2	Not known	
Church	Baptistery	Martyrion	
Yes	No	Not known	
Reliquary	Cemetery	External walls	
No	Yes	No	
Communal building	Tower	Accommodation	
No	No	No	
Cistern	Presses	Monastery SA	
No	No		
Distance to settlement	Nearest settlement	Distance to route	Tchalenko
0.39	Set121		<input type="checkbox"/>
Visibility			
Yes			
Notes			
Pena et al (1987) consider monastic sites 72, 73 & 74 as all associated with Dayr Sita; decoration here similar to E basilica in D.Sita - in fact 'Darosyota'?			

ID	Name	Area
75	Khirbat al-Siyar	Plain of Chalcis
Location		
4.5km S of Sirmada, 2km WNW of Batabu, 8km SW of Dana, 11km SE of Sirmada, opposite Jebel Srir		
Location certainty	Latitude	Longitude
3	36.71695	36.12192
x	y	Elevation (m asl)
294535	3999885	325
Topographical siting	Interpretation	Arch evidence
hilltop	4	
Preservation	Doc evidence	4 Letters
2	2	Yes
Church	Baptistery	Martyrion
No	No	No
Reliquary	Cemetery	External walls
No	No	Yes
Communal building	Tower	Accommodation
No	No	No
Cistern	Presses	Monastery SA
No	No	c.1000
Distance to settlement	Nearest settlement	Distance to route Tchalenko
2.31	Set146	<input checked="" type="checkbox"/>
Visibility		
No		
Notes		
Just an enclosure? Perhaps agricultural, though Pena et al (1987) speculate whether perhaps Beth Sayara; see Tchalenko also (1953 II).		

ID	Name	Area
76	Dayr Marqus	Jebel Barisha
Location		
8km N of Ma'rrat Misrin, NW of Harbanuch		
Location certainty	Latitude	Longitude
3	36.62596	36.08728
x	y	Elevation (m asl)
286250	3996238	454
Topographical siting	Interpretation	Arch evidence
slope	4	
Preservation	Doc evidence	4 Letters
1	1	No
Church	Baptistery	Martyrion
No	No	No
Reliquary	Cemetery	External walls
No	Yes	No
Communal building	Tower	Accommodation
No	No	No
Cistern	Presses	Monastery SA
No	No	
Distance to settlement	Nearest settlement	Distance to route Tchalenko
0.83	Set122	<input type="checkbox"/>
Visibility		
No		
Notes		
Just 2 caves and a possible stylite's column.		

ID	Name	Area
77	Zayarat Shaykh 'Alam al-Din	Jebel Barisha
Location		
8km N of Ma'rrat Misrin, c.0.8km S of Dayr Marqos		
Location certainty	Latitude	Longitude
3	36.62635	36.07892
x	y	Elevation (m asl)
286263	3995310	494
Topographical siting	Interpretation	Arch evidence
valley bottom	5	
Preservation	Doc evidence	4 Letters
2	0	No
Church	Baptistery	Martyrion
No	No	No
Reliquary	Cemetery	External walls
No	No	No
Communal building	Tower	Accommodation
No	No	Yes
Cistern	Presses	Monastery SA
Yes	No	110
Distance to settlement	Nearest settlement	Distance to route
0.26	Set122	Tchalenko <input type="checkbox"/>
Visibility		
Yes		
Notes		
?Laura, associated with Dayr Iskander? 5 caves, a cistern and a platform.		

ID	Name	Area
78	Dayr al-Shamal	Jebel Barisha
Location		
8km N of Ma'rrat Misrin, 120m N of Zayarat Shaykh 'Alam al-Din		
Location certainty	Latitude	Longitude
3	36.62645	36.07998
x	y	Elevation (m asl)
286275	3995427	480
Topographical siting	Interpretation	Arch evidence
valley bottom	5	
Preservation	Doc evidence	4 Letters
2	1	No
Church	Baptistery	Martyrion
No	No	No
Reliquary	Cemetery	External walls
No	No	No
Communal building	Tower	Accommodation
No	No	Yes
Cistern	Presses	Monastery SA
No	No	c.0.5
Distance to settlement	Nearest settlement	Distance to route Tchalenko
0.21	Set122	<input type="checkbox"/>
Visibility		
Yes		
Notes		
A single cave, with a little window.		

ID	Name	Area
79	Dayr Iskander	Jebel Barisha
Location		
8km N of Ma'rrat Misrin, c.1km W of Harbanuch		
Location certainty	Latitude	Longitude
2	36.61728	36.08116
x	y	Elevation (m asl)
285452	3995578	493
Topographical siting	Interpretation	Arch evidence
hilltop	7	
Preservation	Doc evidence	4 Letters
3	1	No
Church	Baptistry	Martyrion
Yes	No	No
Reliquary	Cemetery	External walls
No	No	No
Communal building	Tower	Accommodation
Yes	No	Yes
Cistern	Presses	Monastery SA
Yes	Yes	
Distance to settlement	Nearest settlement	Distance to route Tchalenko
1.03	Set122	0.66 <input type="checkbox"/>
Visibility		
Yes		
Notes		
?Laura, associated with Dayr Iskander?		

ID	Name	Area
80	Hayr al-Gharbi	Jebel Barisha
Location		
c.2.5km N of Dayr Sita, 0.2km W of Kafy 'Aruq		
Location certainty	Latitude	Longitude
3	36.64256	36.12865
x	y	Elevation (m asl)
287857	4000792	484
Topographical siting	Interpretation	Arch evidence
hilltop	4	
Preservation	Doc evidence	4 Letters
3	0	No
Church	Baptistery	Martyrion
Yes	No	No
Reliquary	Cemetery	External walls
No	No	No
Communal building	Tower	Accommodation
No	No	No
Cistern	Presses	Monastery SA
No	No	
Distance to settlement	Nearest settlement	Distance to route Tchalenko
0.57	Set124	<input type="checkbox"/>
Visibility		
Yes		
Notes		
Stylite's column with its own door.		

ID	Name	Area
81	Al-Qasr	Jebel Barisha
Location		
SE edge of Jabal Barisha, 1.5km SW of 'Archin, 200m W of Kafr Binni		
Location certainty	Latitude	Longitude
3	36.59757	36.06268
x	y	Elevation (m asl)
283627	3993572	420
Topographical siting	Interpretation	Arch evidence
hilltop	5	
Preservation	Doc evidence	4 Letters
3	0	No
Church	Baptistery	Martyrion
Yes	No	Yes
Reliquary	Cemetery	External walls
No	No	Yes
Communal building	Tower	Accommodation
No	No	No
Cistern	Presses	Monastery SA
No	Yes	
Distance to settlement	Nearest settlement	Distance to route Tchalenko
0.20	Set126	<input type="checkbox"/>
Visibility		
Yes		
Notes		
Open area to the W of the church - is this agricultural? For collecting surplus?		

ID	Name	Area
82	Khirbat al-Saghrir	Jebel Barisha
Location		
0.3km N of W church at Baqirha		
Location certainty	Latitude	Longitude
3	36.65885	36.20883
x	y	Elevation (m asl)
289538	4009652	506
Topographical siting	Interpretation	Arch evidence
hilltop	5	
Preservation	Doc evidence	4 Letters
2	0	No
Church	Baptistery	Martyrion
No	No	No
Reliquary	Cemetery	External walls
No	Not clear	No
Communal building	Tower	Accommodation
No	No	Yes
Cistern	Presses	Monastery SA
Yes	No	
Distance to settlement	Nearest settlement	Distance to route Tchalenko
0.32	Set38	<input type="checkbox"/>
Visibility		
Yes		
Notes		
No notes.		

ID	Name	Area
83	Al-Qabu	Jebel Barisha
Location		
c. 1km NE of Kafr Daryan		
Location certainty	Latitude	Longitude
3	36.66825	36.17948
x	y	Elevation (m asl)
290305	4006375	434
Topographical siting	Interpretation	Arch evidence
slope	4	
Preservation	Doc evidence	4 Letters
3	0	No
Church	Baptistery	Martyrion
Yes	No	No
Reliquary	Cemetery	External walls
No	Yes	No
Communal building	Tower	Accommodation
No	No	No
Cistern	Presses	Monastery SA
No	No	
Distance to settlement	Nearest settlement	Distance to route Tchalenko
0.97	Set39	<input type="checkbox"/>
Visibility		
Yes		
Notes		
Just a church and a communal tomb?		

ID	Name	Area
84	Kafr Fansha	Jebel Barisha
Location		
3km SW of Kakanaya, c.500m NE Kafr Fansha		
Location certainty	Latitude	Longitude
3	36.58261	36.10612
x	y	Elevation (m asl)
282399	3998425	543
Topographical siting	Interpretation	Arch evidence
hilltop	6	
Preservation	Doc evidence	4 Letters
3	0	No
Church	Baptistery	Martyrion
Yes	No	Yes
Reliquary	Cemetery	External walls
Yes	Yes	No
Communal building	Tower	Accommodation
No	Yes	No
Cistern	Presses	Monastery SA
No	No	
Distance to settlement	Nearest settlement	Distance to route Tchalenko
1.97	Set145	0.90 <input type="checkbox"/>
Visibility		
Yes		
Notes		
Perhaps a pilgrimage site with accommodation within the village?		

ID	Name	Area
85	Kukanaya	Jebel Barisha
Location		
c.5km SE of Bahyo		
Location certainty	Latitude	Longitude
2	36.59659	36.12209
x	y	Elevation (m asl)
283701	4000165	520
Topographical siting	Interpretation	Arch evidence
valley bottom	6	
Preservation	Doc evidence	4 Letters
4	0	No
Church	Baptistery	Martyrion
No	No	Yes
Reliquary	Cemetery	External walls
No	No	No
Communal building	Tower	Accommodation
No	Yes	No
Cistern	Presses	Monastery SA
No	No	
Distance to settlement	Nearest settlement	Distance to route Tchalenko
0.10	Set130	1.54 <input type="checkbox"/>
Visibility		
Yes		
Notes		
Evidence problematic, as incorporated into a mosque in the medieval period.		

ID	Name	Area
86	Al-Duwayr	Jebel Barisha
Location		
c.500m S of reclus' tower (Kukanaya)		
Location certainty	Latitude	Longitude
2	36.59654	36.11764
x	y	Elevation (m asl)
283685	3999672	530
Topographical siting	Interpretation	Arch evidence
slope	5	
Preservation	Doc evidence	4 Letters
2	0	No
Church	Baptistry	Martyrion
No	No	No
Reliquary	Cemetery	External walls
No	No	Yes
Communal building	Tower	Accommodation
No	No	Yes
Cistern	Presses	Monastery SA
No	Yes	
Distance to settlement	Nearest settlement	Distance to route Tchalenko
0.59	Set156	<input checked="" type="checkbox"/>
Visibility		
Yes		
Notes		
Simply a cave, 2 x presses and perhaps some external walls to the 'propriete'.		

ID	Name	Area
87	Qal'at al-Burj	Jebel Barisha
Location		
c.3km S of Kukanaya		
Location certainty	Latitude	Longitude
1	36.59381	36.09291
x	y	Elevation (m asl)
283371	3996934	443
Topographical siting	Interpretation	Arch evidence
hilltop	5	
Preservation	Doc evidence	4 Letters
1	0	No
Church	Baptistery	Martyrion
No	No	No
Reliquary	Cemetery	External walls
No	Yes	No
Communal building	Tower	Accommodation
No	No	Yes
Cistern	Presses	Monastery SA
No	No	
Distance to settlement	Nearest settlement	Distance to route Tchalenko
1.75	Set131	<input type="checkbox"/>
Visibility		
Yes		
Notes		
Monastery identification doubtful, as preservation very poor.		

ID	Name	Area
88	Burj 'Akkush A	Jebel Barisha
Location		
1.8km SW of Kukanaya, 0.7km NW of Qal'at al-Burj		
Location certainty	Latitude	Longitude
3	36.58417	36.10348
x	y	Elevation (m asl)
282532	3998125	552
Topographical siting	Interpretation	Arch evidence
hilltop	6	
Preservation	Doc evidence	4 Letters
4	1	No
Church	Baptistery	Martyrion
No	No	No
Reliquary	Cemetery	External walls
No	No	No
Communal building	Tower	Accommodation
No	Yes	No
Cistern	Presses	Monastery SA
No	No	
Distance to settlement	Nearest settlement	Distance to route Tchalenko
0.46	Set131	1.17 <input type="checkbox"/>
Visibility		
Yes		
Notes		
Good example of a hermitage. Inscription: 'Tower of Ya'qoub, the sinner' (in Syriac).		

ID	Name	Area
89	Burj 'Akkush B	Jebel Barisha
Location		
0.4km NW of Qal'at al-Burj in valley between 87 & 89		
Location certainty	Latitude	Longitude
3	36.58814	36.10156
x	y	Elevation (m asl)
282884	3997907	479
Topographical siting	Interpretation	Arch evidence
valley bottom	6	
Preservation	Doc evidence	4 Letters
0	0	No
Church	Baptistery	Martyrion
No	No	No
Reliquary	Cemetery	External walls
No	No	No
Communal building	Tower	Accommodation
No	Yes	No
Cistern	Presses	Monastery SA
No	No	
Distance to settlement	Nearest settlement	Distance to route Tchalenko
0.83	Set131	1.60 <input type="checkbox"/>
Visibility		
No		
Notes		
Very little evidence. However, a laura with monastic sites 87 & 88? If so, where is the church?		

ID	Name	Area
90	Kahf Sharmada	Jebel Barisha
Location		
2.5km SW of Kukanaya		
Location certainty	Latitude	Longitude
3	36.59081	36.09856
x	y	Elevation (m asl)
283116	3997568	476
Topographical siting	Interpretation	Arch evidence
slope	5	
Preservation	Doc evidence	4 Letters
2	0	No
Church	Baptistery	Martyrion
No	No	No
Reliquary	Cemetery	External walls
No	No	No
Communal building	Tower	Accommodation
No	No	Yes
Cistern	Presses	Monastery SA
No	No	
Distance to settlement	Nearest settlement	Distance to route Tchalenko
1.18	Set131	<input type="checkbox"/>
Visibility		
Yes		
Notes		
A single cave - perhaps associated with a laura around Kukanaya?		

ID	Name	Area	
91	Kusik	Jebel Barisha	
Location			
2km W of Bashmishli			
Location certainty	Latitude	Longitude	
3	36.59652	36.20252	
x	y	Elevation (m asl)	
283916	4009089	465	
Topographical siting	Interpretation	Arch evidence	
hilltop	7		
Preservation	Doc evidence	4 Letters	
4	0	No	
Church	Baptistery	Martyrion	
Yes	No	No	
Reliquary	Cemetery	External walls	
No	No	Yes	
Communal building	Tower	Accommodation	
No	Yes	Yes	
Cistern	Presses	Monastery SA	
No	No		
Distance to settlement	Nearest settlement	Distance to route	Tchalenko
0.67	Set142	1.01	<input type="checkbox"/>
Visibility			
Yes			
Notes			
Chapel, tower?, surrounding walls and an accommodation block ('hospice': Pena et al 1987).			

ID	Name	Area
92	Ma'ramaya	Jebel Barisha
Location		
2.5km WNW of Bamuqa, 11m W of the ?village church		
Location certainty	Latitude	Longitude
3	36.58706	36.20996
x	y	Elevation (m asl)
283086	4009935	492
Topographical siting	Interpretation	Arch evidence
Not known	6	
Preservation	Doc evidence	4 Letters
3	0	No
Church	Baptistery	Martyrion
Yes	Yes	Yes
Reliquary	Cemetery	External walls
No	No	No
Communal building	Tower	Accommodation
Yes	Yes	Not known
Cistern	Presses	Monastery SA
No	Yes	430
Distance to settlement	Nearest settlement	Distance to route Tchalenko
0.00	Set141	0.16 <input type="checkbox"/>
Visibility		
Yes		
Notes		
See details in Les Cenobites (Pena et al 1983); here, church included within the monastery.		

ID	Name	Area
93	Mar Saba	Jebel Barisha
Location		
1km NE of Banakfur, 0.5km SE of Al-Ishruq; 4km SW of Bamuqqa		
Location certainty	Latitude	Longitude
5	36.59174	36.18876
x	y	Elevation (m asl)
283448	4007573	494
Topographical siting	Interpretation	Arch evidence
hilltop	6	
Preservation	Doc evidence	4 Letters
3	0	No
Church	Baptistery	Martyrion
Yes	No	No
Reliquary	Cemetery	External walls
No	Yes	Yes
Communal building	Tower	Accommodation
Not clear	Yes	Not clear
Cistern	Presses	Monastery SA
No	Yes	
Distance to settlement	Nearest settlement	Distance to route Tchalenko
0.89	Set132	0.47 <input checked="" type="checkbox"/>
Visibility		
Yes		
Notes		
Pena et al (1987): 3 x inscriptions: one mentions a priest on a press; 'monastic buildings' ambiguous.		

ID	Name	Area	
94	Dayr Ayzara B	Jebel Barisha	
Location			
50m N of Dayr Ayzara A			
Location certainty		Latitude	Longitude
3		36.67606	36.14722
x		y	Elevation (m asl)
290921		4002780	389
Topographical siting	Interpretation	Arch evidence	
slope	6		
Preservation	Doc evidence	4 Letters	
3	1	No	
Church	Baptistry	Martyrion	
No	No	No	
Reliquary	Cemetery	External walls	
No	Yes	Yes	
Communal building	Tower	Accommodation	
No	No	Yes	
Cistern	Presses	Monastery SA	
No	No		
Distance to settlement	Nearest settlement	Distance to route	Tchalenko
1.24	Set139	1.33	<input type="checkbox"/>
Visibility			
Yes			
Notes			
A 'tower' (though I found not to be, in fact) and a surrounding wall. Perhaps related to Dayr Ayzara A (in a laura format?).			

ID	Name	Area	
95	Dayr Mi'az A	Jebel Barisha	
Location			
1km SE of the village ruins of Mi'az			
Location certainty		Latitude	Longitude
2		36.67144	36.14072
x		y	Elevation (m asl)
290488		4002069	384
Topographical siting	Interpretation	Arch evidence	
slope	5		
Preservation	Doc evidence	4 Letters	
2	1	No	
Church	Baptistry	Martyrion	
No	No	No	
Reliquary	Cemetery	External walls	
No	No	Yes	
Communal building	Tower	Accommodation	
No	No	Yes	
Cistern	Presses	Monastery SA	
No	No	150	
Distance to settlement	Nearest settlement	Distance to route	Tchalenko
1.17	Set139		<input checked="" type="checkbox"/>
Visibility			
Yes			
Notes			
Pena et al (1987): just the first course of the surrounding wall remains: really a monastery, or an agricultural enclosure?			

ID	Name	Area	
96	Dayr Mi'az B	Jebel Barisha	
Location			
1km SW of Dayr Mi'az A			
Location certainty		Latitude	Longitude
3		36.66365	36.13749
x		y	Elevation (m asl)
289778		4001358	387
Topographical siting	Interpretation	Arch evidence	
slope	5		
Preservation	Doc evidence	4 Letters	
0	0	No	
Church	Baptistery	Martyrion	
No	No	No	
Reliquary	Cemetery	External walls	
No	No	Yes	
Communal building	Tower	Accommodation	
Yes	No	No	
Cistern	Presses	Monastery SA	
No	No		
Distance to settlement	Nearest settlement	Distance to route	Tchalenko
1.55	Set139		<input type="checkbox"/>
Visibility			
No			
Notes			
Pena et al (1987): only surrounding wall and communal 'edifice' remain.			

ID	Name	Area
97	Al-Burj (Mi'az)	Jebel Barisha
Location		
Between Dayr Mi'az A & B		
Location certainty	Latitude	Longitude
3	36.66749	36.13757
x	y	Elevation (m asl)
290124	4001727	408
Topographical siting	Interpretation	Arch evidence
hilltop	5	0
Preservation	Doc evidence	4 Letters
0	0	No
Church	Baptistery	Martyrion
No	No	No
Reliquary	Cemetery	External walls
No	No	No
Communal building	Tower	Accommodation
No	Yes	No
Cistern	Presses	Monastery SA
No	No	
Distance to settlement	Nearest settlement	Distance to route Tchalenko
1.29	Set139	<input type="checkbox"/>
Visibility		
Yes		
Notes		
Pena et al: called 'La Tourelle'; only a tower remains: ?agricultural only. Now destroyed.		

ID	Name	Area
98	Khirbat al-Sanad	Jebel Barisha
Location		
1.5km NW of the W church in Mi'az		
Location certainty	Latitude	Longitude
3	36.65328	36.16138
x	y	Elevation (m asl)
288909	4004399	519
Topographical siting	Interpretation	Arch evidence
hilltop	7	
Preservation	Doc evidence	4 Letters
3	0	No
Church	Baptistery	Martyrion
No	No	Yes
Reliquary	Cemetery	External walls
No	No	Yes
Communal building	Tower	Accommodation
No	Yes	Yes
Cistern	Presses	Monastery SA
No	No	
Distance to settlement	Nearest settlement	Distance to route Tchalenko
1.35	Set38	0.63 <input type="checkbox"/>
Visibility		
Yes		
Notes		
Disparate evidence, but unified by a surrounding wall.		

ID	Name	Area
99	Qal'at al-Tuffa	Jebel Barisha
Location		
0.8km WNW of Mi'az		
Location certainty	Latitude	Longitude
5	36.65205	36.15223
x	y	Elevation (m asl)
288774	4003387	482
Topographical siting	Interpretation	Arch evidence
hilltop	7	
Preservation	Doc evidence	4 Letters
3	0	No
Church	Baptistery	Martyrion
Yes	No	No
Reliquary	Cemetery	External walls
No	Yes	Yes
Communal building	Tower	Accommodation
Yes	No	Yes
Cistern	Presses	Monastery SA
No	No	
Distance to settlement	Nearest settlement	Distance to route Tchalenko
0.82	Set38	0.72 <input type="checkbox"/>
Visibility		
No		
Notes		
17 cells in all. A footpath links the monastery with the area below.		

ID	Name	Area	
100	Al-Mazawaq	Jebel Barisha	
Location			
10km W of Bashmishli			
Location certainty		Latitude	Longitude
5		36.57449	36.22716
x	y	Elevation (m asl)	
282004	4011872	381	
Topographical siting	Interpretation	Arch evidence	
slope	5		
Preservation	Doc evidence	4 Letters	
1	0	No	
Church	Baptistry	Martyrion	
No	No	No	
Reliquary	Cemetery	External walls	
No	No	No	
Communal building	Tower	Accommodation	
Yes	No	No	
Cistern	Presses	Monastery SA	
No	No		
Distance to settlement	Nearest settlement	Distance to route	Tchalenko
0.85	Set55		<input type="checkbox"/>
Visibility			
Yes			
Notes			
A single, E-W aligned building. Pena et al (1987): 'very probably' a monastery. Seems doubtful; an unusual structural form for such an isolated site.			

ID	Name	Area
101	Burj Jalahah	Jebel Barisha
Location		
2km S of Sirmada		
Location certainty	Latitude	Longitude
3	36.71769	36.16697
x	y	Elevation (m asl)
294719	4004882	412
Topographical siting	Interpretation	Arch evidence
valley bottom	6	
Preservation	Doc evidence	4 Letters
4	2	No
Church	Baptistery	Martyrion
No	No	No
Reliquary	Cemetery	External walls
No	No	No
Communal building	Tower	Accommodation
No	Yes	No
Cistern	Presses	Monastery SA
Yes	Yes	308
Distance to settlement	Nearest settlement	Distance to route
1.89	Set101	1.57
Visibility		
Yes		
Notes		
Has a 'latrine' (though perhaps not). Refortified in the 12th C. Referred to by Pena et al (1987) as 'Burj Abdallah' - this is in fact incorrect (having checked with local community).		

ID	Name	Area
102	Dayr Burj Jalahah	Jebel Barisha
Location		
100m S of Burj Abdallah		
Location certainty	Latitude	Longitude
3	36.71799	36.16600
x	y	Elevation (m asl)
294743	4004773	417
Topographical siting	Interpretation	Arch evidence
slope	5	
Preservation	Doc evidence	4 Letters
2	1	No
Church	Baptistery	Martyrion
No	No	No
Reliquary	Cemetery	External walls
No	No	No
Communal building	Tower	Accommodation
Yes	No	Yes
Cistern	Presses	Monastery SA
Yes	Yes	2120
Distance to settlement	Nearest settlement	Distance to route Tchalenko
2.02	Set101	<input type="checkbox"/>
Visibility		
Yes		
Notes		
3 cisterns & 3 presses, plus some architectural remains - thus a strong agricultural component likely.		

ID	Name	Area
103	Burj Jaber	Jebel Barisha
Location		
2.5km SE of Sirmada village, 0.6km NE of Dayr Burj Abdallah		
Location certainty	Latitude	Longitude
3	36.72409	36.16009
x	y	Elevation (m asl)
295277	4005105	385
Topographical siting	Interpretation	Arch evidence
hilltop	6	
Preservation	Doc evidence	4 Letters
2	0	No
Church	Baptistry	Martyrion
No	No	Yes
Reliquary	Cemetery	External walls
No	No	No
Communal building	Tower	Accommodation
No	Yes	No
Cistern	Presses	Monastery SA
No	Yes	
Distance to settlement	Nearest settlement	Distance to route Tchalenko
1.76	Set101	1.15 <input type="checkbox"/>
Visibility		
Yes		
Notes		
2 presses.		

ID	Name	Area
104	Burj Nasr	Jebel Barisha
Location		
400m W of Burj Abdallah		
Location certainty	Latitude	Longitude
3	36.71487	36.16627
x	y	Elevation (m asl)
294463	4004810	433
Topographical siting	Interpretation	Arch evidence
slope	6	
Preservation	Doc evidence	4 Letters
4	0	No
Church	Baptistery	Martyrion
No	No	No
Reliquary	Cemetery	External walls
No	No	No
Communal building	Tower	Accommodation
No	Yes	No
Cistern	Presses	Monastery SA
No	No	
Distance to settlement	Nearest settlement	Distance to route Tchalenko
1.98	Set101	1.76 <input type="checkbox"/>
Visibility		
Yes		
Notes		
A 2 storey tower.		

ID	Name	Area
105	Dayr Burj Nasr	Jebel Barisha
Location		
c.1-200m W of Burj Nasser		
Location certainty	Latitude	Longitude
5	36.71224	36.16622
x	y	Elevation (m asl)
294226	4004810	480
Topographical siting	Interpretation	Arch evidence
slope	6	
Preservation	Doc evidence	4 Letters
1	1	No
Church	Baptistery	Martyrion
No	No	No
Reliquary	Cemetery	External walls
No	No	No
Communal building	Tower	Accommodation
No	No	Yes
Cistern	Presses	Monastery SA
No	Yes	
Distance to settlement	Nearest settlement	Distance to route Tchalenko
2.05	Set101	1.87 <input type="checkbox"/>
Visibility		
Yes		
Notes		
3 rooms and a press.		

ID	Name	Area
106	Burj Mahdum	Jebel Barisha
Location		
0.25km SW of Dayr Burj Nasser, 1.5km NW of Burj Namra		
Location certainty	Latitude	Longitude
3	36.71013	36.16654
x	y	Elevation (m asl)
294038	4004850	512
Topographical siting	Interpretation	Arch evidence
slope	5	
Preservation	Doc evidence	4 Letters
2	0	No
Church	Baptistery	Martyrion
No	No	No
Reliquary	Cemetery	External walls
No	No	No
Communal building	Tower	Accommodation
No	No	Yes
Cistern	Presses	Monastery SA
No	Yes	
Distance to settlement	Nearest settlement	Distance to route Tchalenko
2.08	Set101	<input type="checkbox"/>
Visibility		
Yes		
Notes		
3 rooms and a press. Construction seems very early, however.		

ID	Name	Area
107	Burj Mahdum al-Sharqi	Jebel Barisha
Location		
200m SE of temple in Burj Mahdum		
Location certainty	Latitude	Longitude
3	36.71182	36.16576
x	y	Elevation (m asl)
294187	4004760	480
Topographical siting	Interpretation	Arch evidence
hilltop	6	
Preservation	Doc evidence	4 Letters
2	0	No
Church	Baptistry	Martyrion
No	No	No
Reliquary	Cemetery	External walls
No	No	Yes
Communal building	Tower	Accommodation
No	Yes	No
Cistern	Presses	Monastery SA
No	Yes	
Distance to settlement	Nearest settlement	Distance to route Tchalenko
2.11	Set101	1.93 <input type="checkbox"/>
Visibility		
Yes		
Notes		
A single tower, a press, and perhaps a surrounding wall. But dating problems with this site?		

ID	Name	Area	
108	Al-Ruways	Jebel Barisha	
Location			
3.8km SW of Barisha, 0.5km W of Qarqanya			
Location certainty		Latitude	Longitude
3		36.59878	36.14310
x		y	Elevation (m asl)
283956		4002492	447
Topographical siting	Interpretation	Arch evidence	
rock face	5		
Preservation	Doc evidence	4 Letters	
2	0	No	
Church	Baptistry	Martyrion	
No	No	Yes	
Reliquary	Cemetery	External walls	
No	Yes	No	
Communal building	Tower	Accommodation	
No	No	No	
Cistern	Presses	Monastery SA	
Yes	Yes		
Distance to settlement	Nearest settlement	Distance to route	Tchalenko
0.34	Set128		<input type="checkbox"/>
Visibility			
Yes			
Notes			
Entirely rock-cut.			

ID	Name	Area
109	Radwa	Jebel Barisha
Location		
1.5km N of Buzghar. Dayr 75m W of the village		
Location certainty	Latitude	Longitude
3	36.62432	36.16065
x	y	Elevation (m asl)
286302	4004382	545
Topographical siting	Interpretation	Arch evidence
valley bottom	7	
Preservation	Doc evidence	4 Letters
2	0	No
Church	Baptistery	Martyrion
Yes	No	No
Reliquary	Cemetery	External walls
No	Yes	No
Communal building	Tower	Accommodation
Not known	Yes	Yes
Cistern	Presses	Monastery SA
No	No	
Distance to settlement	Nearest settlement	Distance to route Tchalenko
0.06	Set123	3.69 <input type="checkbox"/>
Visibility		
Yes		
Notes		
Further walls' unidentifiable - perhaps accommodation?		

ID	Name	Area
110	Al-Soma'at	Jebel Barisha
Location		
0.7km W of Radwa village		
Location certainty	Latitude	Longitude
2	36.62052	36.16126
x	y	Elevation (m asl)
285962	4004458	557
Topographical siting	Interpretation	Arch evidence
hilltop	7	
Preservation	Doc evidence	4 Letters
2	0	No
Church	Baptistery	Martyrion
Yes	No	No
Reliquary	Cemetery	External walls
No	No	Not known
Communal building	Tower	Accommodation
No	No	Yes
Cistern	Presses	Monastery SA
No	Yes	
Distance to settlement	Nearest settlement	Distance to route Tchalenko
0.42	Set123	3.32 <input type="checkbox"/>
Visibility		
Yes		
Notes		
Pena et al (1987) mention the 'propriete' - implies an estate, thus enclosure wall?		

ID	Name	Area	
111	Al-Ruqaq	Jebel Barisha	
Location			
2.1km SE of Kafr 'Aruq			
Location certainty		Latitude	Longitude
2		36.12065	36.66984
x		y	Elevation (m asl)
290291		3999845	419
Topographical siting	Interpretation	Arch evidence	
hilltop	6		
Preservation	Doc evidence	4 Letters	
1	0	No	
Church	Baptistery	Martyrion	
No	No	Yes	
Reliquary	Cemetery	External walls	
No	No	No	
Communal building	Tower	Accommodation	
No	No	Yes	
Cistern	Presses	Monastery SA	
No	Yes		
Distance to settlement	Nearest settlement	Distance to route	Tchalenko
0.38	Set155	1.78	<input type="checkbox"/>
Visibility			
Yes			
Notes			
Largely destroyed now.			

ID	Name	Area
112	Sarakhta A	Jebel Barisha
Location		
c.2.5km E of Kafr Daryan (but Pena et al: an hour's walk ?). NEmost structure at Sarakhta		
Location certainty	Latitude	Longitude
2	36.68707	36.17758
x	y	Elevation (m asl)
291992	4006124	449
Topographical siting	Interpretation	Arch evidence
hilltop	4	
Preservation	Doc evidence	4 Letters
1	0	No
Church	Baptistery	Martyrion
No	No	Yes
Reliquary	Cemetery	External walls
No	No	Yes
Communal building	Tower	Accommodation
No	No	Not known
Cistern	Presses	Monastery SA
No	No	
Distance to settlement	Nearest settlement	Distance to route Tchalenko
1.17	Set46	<input type="checkbox"/>
Visibility		
Yes		
Notes		
Pena et al (1987): 2 different periods, 5th and 6th century. Refers rather vaguely to 'le monastere' - but are these further buildings? There are apparently door posts, for example.		

ID	Name	Area	
113	Sarakhta B	Jebel Barisha	
Location			
400m S of Sarakhta A			
Location certainty		Latitude	Longitude
2		36.68716	36.17426
x		y	Elevation (m asl)
291992		4005755	430
Topographical siting	Interpretation	Arch evidence	
slope	4		
Preservation	Doc evidence	4 Letters	
3	0	No	
Church	Baptistery	Martyrion	
No	No	Yes	
Reliquary	Cemetery	External walls	
No	No	Yes	
Communal building	Tower	Accommodation	
No	No	No	
Cistern	Presses	Monastery SA	
No	No		
Distance to settlement	Nearest settlement	Distance to route	Tchalenko
1.52	Set46		<input type="checkbox"/>
Visibility			
No			
Notes			
Pena et al (1987): one of the oldest in N Syria (on the basis of the poor quality masonry - this dating is not secure).			

ID	Name	Area
114	Burj Sarakhta	Jebel Barisha
Location		
150m SW of Sarakhta B		
Location certainty	Latitude	Longitude
2	36.68526	36.17250
x	y	Elevation (m asl)
291816	4005564	443
Topographical siting	Interpretation	Arch evidence
hilltop	6	
Preservation	Doc evidence	4 Letters
1	0	No
Church	Baptistery	Martyrion
No	No	No
Reliquary	Cemetery	External walls
No	No	No
Communal building	Tower	Accommodation
No	Yes	No
Cistern	Presses	Monastery SA
No	No	
Distance to settlement	Nearest settlement	Distance to route Tchalenko
1.77	Set46	2.20
Visibility		
No		
Notes		
Pena et al (1987): foundations only.		

ID	Name	Area
115	Sarakhta C	Jebel Barisha
Location		
500m W of Sarakhta A		
Location certainty	Latitude	Longitude
2	36.68160	36.17747
x	y	Elevation (m asl)
291500	4006124	457
Topographical siting	Interpretation	Arch evidence
hilltop	5	
Preservation	Doc evidence	4 Letters
2	0	No
Church	Baptistery	Martyrion
No	No	No
Reliquary	Cemetery	External walls
No	No	No
Communal building	Tower	Accommodation
No	No	Yes
Cistern	Presses	Monastery SA
No	No	
Distance to settlement	Nearest settlement	Distance to route Tchalenko
1.39	Set46	<input type="checkbox"/>
Visibility		
Yes		
Notes		
A building of 2 parts, preceded by a door.		

ID	Name	Area
116	Sarakhta D	Jebel Barisha
Location		
500m S of Sarakhta C		
Location certainty	Latitude	Longitude
2	36.68158	36.17219
x	y	Elevation (m asl)
291484	4005538	430
Topographical siting	Interpretation	Arch evidence
slope	6	
Preservation	Doc evidence	4 Letters
2	0	No
Church	Baptistry	Martyrion
No	No	Yes
Reliquary	Cemetery	External walls
No	No	No
Communal building	Tower	Accommodation
No	No	Yes
Cistern	Presses	Monastery SA
No	No	
Distance to settlement	Nearest settlement	Distance to route Tchalenko
1.91	Set46	1.88 <input type="checkbox"/>
Visibility		
Yes		
Notes		
2 buildings and a tomb.		

ID	Name	Area
117	Sarakhta E	Jebel Barisha
Location		
Pena et al do not state where this site is		
Location certainty	Latitude	Longitude
3	36.67797	36.17433
x	y	Elevation (m asl)
291165	4005783	422
Topographical siting	Interpretation	Arch evidence
hilltop	4	
Preservation	Doc evidence	4 Letters
2	0	No
Church	Baptistry	Martyrion
No	No	No
Reliquary	Cemetery	External walls
No	No	No
Communal building	Tower	Accommodation
No	No	Yes
Cistern	Presses	Monastery SA
No	No	
Distance to settlement	Nearest settlement	Distance to route Tchalenko
1.67	Set39	<input type="checkbox"/>
Visibility		
No		
Notes		
Perhaps a communal structure used by other cells at Sarakhta?		

ID	Name	Area
118	Sarakhta F	Jebel Barisha
Location		
Difficult to locate (Pena et al v.ambiguous). However, 0.5 - 1km W of the above		
Location certainty	Latitude	Longitude
2	36.67222	36.17490
x	y	Elevation (m asl)
290649	4005859	448
Topographical siting	Interpretation	Arch evidence
hilltop	4	
Preservation	Doc evidence	4 Letters
1	0	No
Church	Baptistery	Martyrion
No	No	No
Reliquary	Cemetery	External walls
No	No	No
Communal building	Tower	Accommodation
No	No	Yes
Cistern	Presses	Monastery SA
No	No	
Distance to settlement	Nearest settlement	Distance to route Tchalenko
1.15	Set39	<input type="checkbox"/>
Visibility		
Yes		
Notes		
A single structure, and of an inconclusive form. However, perhaps a similar use to the others in the Sarakhta region?		

ID	Name	Area	
119	Aranta	Jebel Barisha	
Location			
2km SE of Brayj, 3-400m NE of Sarfud			
Location certainty		Latitude	Longitude
2		36.69150	36.18917
x		y	Elevation (m asl)
292421		4007401	406
Topographical siting	Interpretation	Arch evidence	
slope	7		
Preservation	Doc evidence	4 Letters	
3	0	No	
Church	Baptistery	Martyrion	
No	No	No	
Reliquary	Cemetery	External walls	
No	Yes	Yes	
Communal building	Tower	Accommodation	
No	Yes	Yes	
Cistern	Presses	Monastery SA	
No	No		
Distance to settlement	Nearest settlement	Distance to route	Tchalenko
0.19	Set46	0.56	<input type="checkbox"/>
Visibility			
Yes			
Notes			
2 buildings, surrounding wall, tower (60m SW), burial vault.			

ID	Name	Area	
120	Burj Nahas	Jebel Barisha	
Location			
0.5km SW of Sarfud			
Location certainty		Latitude	Longitude
2		36.69013	36.18350
x		y	Elevation (m asl)
292283		4006774	422
Topographical siting	Interpretation	Arch evidence	
slope	6		
Preservation	Doc evidence	4 Letters	
2	0	No	
Church	Baptistery	Martyrion	
No	No	No	
Reliquary	Cemetery	External walls	
No	No	No	
Communal building	Tower	Accommodation	
No	Yes	Yes	
Cistern	Presses	Monastery SA	
No	No		
Distance to settlement	Nearest settlement	Distance to route	Tchalenko
0.50	Set46	1.20	<input type="checkbox"/>
Visibility			
Yes			
Notes			
2 buildings and a tower.			

ID	Name	Area
121	Burj Suwayd A	Jebel Barisha
Location		
0.5km NW of the village of Wadi Ubaid, 0.8km SW of Qal'at Sirmada		
Location certainty	Latitude	Longitude
5	36.70361	36.17041
x	y	Elevation (m asl)
293461	4005293	496
Topographical siting	Interpretation	Arch evidence
hilltop	7	
Preservation	Doc evidence	4 Letters
3	0	No
Church	Baptistery	Martyrion
Yes	No	Yes
Reliquary	Cemetery	External walls
No	No	No
Communal building	Tower	Accommodation
No	Yes	Yes
Cistern	Presses	Monastery SA
No	No	
Distance to settlement	Nearest settlement	Distance to route Tchalenko
1.97	Set101	2.01
Visibility		
Yes		
Notes		
Tower, some cells (number unclear), a small chapel, martyrion.		

ID	Name	Area
122	Burj Suwayd B	Jebel Barisha
Location		
200m SW of Burj Suwayd A		
Location certainty	Latitude	Longitude
5	36.70188	36.16927
x	y	Elevation (m asl)
293303	4005170	505
Topographical siting	Interpretation	Arch evidence
slope	6	
Preservation	Doc evidence	4 Letters
2	0	No
Church	Baptistry	Martyrion
No	No	Yes
Reliquary	Cemetery	External walls
No	No	No
Communal building	Tower	Accommodation
No	Yes	Yes
Cistern	Presses	Monastery SA
No	Yes	
Distance to settlement	Nearest settlement	Distance to route Tchalenko
2.18	Set101	2.17 <input type="checkbox"/>
Visibility		
Yes		
Notes		
2 cells, a room (perhaps a tower?), single tomb, 2 presses.		

ID	Name	Area
123	Sarjibla S	Jebel Halaqa
Location		
Location certainty	Latitude	Longitude
5	36.71529	36.23637
x	y	Elevation (m asl)
294684	4012586	459
Topographical siting	Interpretation	Arch evidence
hilltop	8	
Preservation	Doc evidence	4 Letters
5	0	No
Church	Baptistery	Martyrion
Yes	No	Yes
Reliquary	Cemetery	External walls
No	Yes	Yes
Communal building	Tower	Accommodation
Yes	No	Yes
Cistern	Presses	Monastery SA
Yes	Yes	5500
Distance to settlement	Nearest settlement	Distance to route
0.38	Set30	0.95
Visibility		
Yes		
Notes		
Central basilica church used for the settlement distance.		

ID	Name	Area
124	Sarjibla (Central)	Jebel Halaqa
Location		
Location certainty	Latitude	Longitude
3	36.71700	36.23975
x	y	Elevation (m asl)
294847	4012958	456
Topographical siting	Interpretation	Arch evidence
hilltop	5	
Preservation	Doc evidence	4 Letters
3	0	No
Church	Baptistery	Martyrion
Yes	No	No
Reliquary	Cemetery	External walls
No	No	No
Communal building	Tower	Accommodation
No	No	Not clear
Cistern	Presses	Monastery SA
No	Yes	7000
Distance to settlement	Nearest settlement	Distance to route
0.15	Set30	Tchalenko <input type="checkbox"/>
Visibility		
Yes		
Notes		
Central basilica church used for the settlement distance.		

ID	Name	Area
125	Sarjibla N	Jebel Halaqa
Location		
The NW of Jebel Halaqa, 0.5 km N.W. of A.S. 125		
Location certainty	Latitude	Longitude
2	36.71911	36.24301
x	y	Elevation (m asl)
295045	4013315	461
Topographical siting	Interpretation	Arch evidence
hilltop	6	
Preservation	Doc evidence	4 Letters
4	0	No
Church	Baptistery	Martyrion
Yes	No	No
Reliquary	Cemetery	External walls
No	No	No
Communal building	Tower	Accommodation
Yes	Yes	Yes
Cistern	Presses	Monastery SA
No	No	4500
Distance to settlement	Nearest settlement	Distance to route
0.25	Set30	2.65
Visibility		
Yes		
Notes		
Central basilica church used for the settlement distance.		

ID	Name	Area
126	Turlaha	Jebel Barisha
Location		
Far NW of Jabal Barisha, c.0.6km NW of Al-Manzul		
Location certainty	Latitude	Longitude
4	36.57627	36.22096
x	y	Elevation (m asl)
282146	4011180	476
Topographical siting	Interpretation	Arch evidence
hilltop	5	
Preservation	Doc evidence	4 Letters
3	2	No
Church	Baptistry	Martyrion
Yes	No	Yes
Reliquary	Cemetery	External walls
No	Yes	No
Communal building	Tower	Accommodation
No	No	No
Cistern	Presses	Monastery SA
No	No	
Distance to settlement	Nearest settlement	Distance to route Tchalenko
0.93	Set56	<input checked="" type="checkbox"/>
Visibility		
Yes		
Notes		
The basilica of this monastery is listed here as belonging to a monastery, but according to Pena et al (1987 199) it is a separate village.		

ID	Name	Area	
127	Khirbat Assi	Jebel Barisha	
Location			
Far NW edge of Jabal Barisha, c.2km W of Turlaha			
Location certainty		Latitude	Longitude
4		36.55369	36.22001
x	y	Elevation (m asl)	
280114	4011126	328	
Topographical siting	Interpretation	Arch evidence	
valley bottom	2		
Preservation	Doc evidence	4 Letters	
-1	0	No	
Church	Baptistry	Martyrion	
No	No	No	
Reliquary	Cemetery	External walls	
No	No	Not known	
Communal building	Tower	Accommodation	
Not known	Not known	Not known	
Cistern	Presses	Monastery SA	
Not known	Not known		
Distance to settlement	Nearest settlement	Distance to route	Tchalenko
2.00	Set55		<input type="checkbox"/>
Visibility			
No			
Notes			
Very few details given by Pena et al (1987, 199).			

ID	Name	Area
128	Basratun	Jebel Sim'an
Location		
4.5km E of Toqad, on the minor road to Aleppo		
Location certainty	Latitude	Longitude
2	36.91238	36.20584
x	y	Elevation (m asl)
312325	4008799	450
Topographical siting	Interpretation	Arch evidence
hilltop	2	
Preservation	Doc evidence	4 Letters
-1	2	Yes
Church	Baptistry	Martyrion
Not known	Not known	Not known
Reliquary	Cemetery	External walls
Not known	Not known	Not known
Communal building	Tower	Accommodation
Not known	Not known	Not known
Cistern	Presses	Monastery SA
Not known	Not known	
Distance to settlement	Nearest settlement	Distance to route Tchalenko
4.59	Set43	<input checked="" type="checkbox"/>
Visibility		
No		
Notes		
Tchalenko identifies this with 'KPR ZRTYN' of the 4 Letters (1953 II).		

ID	Name	Area	
129	Banastur	Jebel Sim'an	
Location			
7km NE of Dart 'Azza			
Location certainty		Latitude	Longitude
4		36.92727	36.29899
x		y	Elevation (m asl)
313885		4019105	499
Topographical siting	Interpretation	Arch evidence	
hilltop	5		
Preservation	Doc evidence	4 Letters	
2	0	No	
Church	Baptistery	Martyrion	
Not known	Not known	Not known	
Reliquary	Cemetery	External walls	
Not known	Not known	Not known	
Communal building	Tower	Accommodation	
Not known	Yes	Not known	
Cistern	Presses	Monastery SA	
Not known	Not known		
Distance to settlement	Nearest settlement	Distance to route	Tchalenko
2.71	Set90		<input checked="" type="checkbox"/>
Visibility			
No			
Notes			
There is a tower here and some ruins, but is this really monastic? Not clear.			

ID	Name	Area	
130	Baruman	Jebel Sim'an	
Location			
12km E of Dart 'Azza			
Location certainty		Latitude	Longitude
4		36.98637	36.30311
x		y	Elevation (m asl)
319202		4019450	500
Topographical siting	Interpretation	Arch evidence	
hilltop	2		
Preservation	Doc evidence	4 Letters	
-1	3	Yes	
Church	Baptistery	Martyrion	
Not known	Not known	Not known	
Reliquary	Cemetery	External walls	
Not known	Not known	Not known	
Communal building	Tower	Accommodation	
Not known	No	Not known	
Cistern	Presses	Monastery SA	
Not known	Not known		
Distance to settlement	Nearest settlement	Distance to route	Tchalenko
2.55	Set96		<input checked="" type="checkbox"/>
Visibility			
No			
Notes			
No notes.			

ID	Name	Area	
131	Burjka	Jebel Sim'an	
Location			
4km E of Qal'at Sim'an			
Location certainty		Latitude	Longitude
4		36.88479	36.32044
x		y	Elevation (m asl)
310123		4021567	590
Topographical siting	Interpretation	Arch evidence	
slope	5		
Preservation	Doc evidence	4 Letters	
2	0	No	
Church	Baptistery	Martyrion	
Not known	Not known	Not known	
Reliquary	Cemetery	External walls	
Not known	Not known	Not known	
Communal building	Tower	Accommodation	
Not known	Yes	Not known	
Cistern	Presses	Monastery SA	
Not known	Not known		
Distance to settlement	Nearest settlement	Distance to route	Tchalenko
0.00	Set89		<input checked="" type="checkbox"/>
Visibility			
Yes			
Notes			
No notes.			

ID	Name	Area	
132	Burj al-Qas	Jebel Sim'an	
Location			
4km SE of Brad			
Location certainty		Latitude	Longitude
3		36.93040	36.35163
x	y	Elevation (m asl)	
314291	4024939	524	
Topographical siting	Interpretation	Arch evidence	
hilltop	5		
Preservation	Doc evidence	4 Letters	
2	0	No	
Church	Baptistery	Martyrion	
Not known	Not known	Not known	
Reliquary	Cemetery	External walls	
Not known	Not known	Not known	
Communal building	Tower	Accommodation	
Not known	Yes	Not known	
Cistern	Presses	Monastery SA	
Not known	Not known		
Distance to settlement	Nearest settlement	Distance to route	Tchalenko
0.00	Set93		<input checked="" type="checkbox"/>
Visibility			
Yes			
Notes			
No notes.			

ID	Name	Area
133	Dayr Shin	Jebel Sim'an
Location		
9 km E of Dart 'Azza		
Location certainty	Latitude	Longitude
4	36.95271	36.29140
x	y	Elevation (m asl)
316152	4018214	542
Topographical siting	Interpretation	Arch evidence
slope	2	
Preservation	Doc evidence	4 Letters
-1	0	No
Church	Baptistry	Martyrion
Not known	Not known	Not known
Reliquary	Cemetery	External walls
Not known	Not known	Not known
Communal building	Tower	Accommodation
Not known	No	Not known
Cistern	Presses	Monastery SA
Not known	Not known	
Distance to settlement	Nearest settlement	Distance to route Tchalenko
1.62	Set96	<input checked="" type="checkbox"/>
Visibility		
Yes		
Notes		
No notes.		

ID	Name	Area	
134	Kharab al-Dayr	Jebel Halaqa	
Location			
1.5km N of Batabu			
Location certainty		Latitude	Longitude
2		36.73338	36.32508
x	y	Elevation (m asl)	
296541	4003297	372	
Topographical siting	Interpretation	Arch evidence	
slope	2		
Preservation	Doc evidence	4 Letters	
-1	1	No	
Church	Baptistry	Martyrion	
Not known	Not known	Not known	
Reliquary	Cemetery	External walls	
Not known	Not known	Not known	
Communal building	Tower	Accommodation	
Not known	No	Not known	
Cistern	Presses	Monastery SA	
Not known	Not known		
Distance to settlement	Nearest settlement	Distance to route	Tchalenko
1.81	Set3		<input checked="" type="checkbox"/>
Visibility			
Yes			
Notes			
No notes.			

ID	Name	Area	
135	Kafr Lab	Jebel Sim'an	
Location			
4km E of Qal'at Sim'an			
Location certainty		Latitude	Longitude
4		36.88375	36.33685
x		y	Elevation (m asl)
310069		4022390	568
Topographical siting	Interpretation	Arch evidence	
hilltop	2		
Preservation	Doc evidence	4 Letters	
-1	0	No	
Church	Baptistry	Martyrion	
Not known	Not known	Not known	
Reliquary	Cemetery	External walls	
Not known	Not known	Not known	
Communal building	Tower	Accommodation	
Not known	No	Not known	
Cistern	Presses	Monastery SA	
Not known	Not known		
Distance to settlement	Nearest settlement	Distance to route	Tchalenko
0.00	Set88		<input checked="" type="checkbox"/>
Visibility			
Yes			
Notes			
No notes.			

ID	Name	Area	
136	Qila	Jebel Halaqa	
Location			
8km W of Qal'at Sim'an, foot of Jebel Halaqa			
Location certainty	Latitude	Longitude	
2	36.74013	36.33873	
x	y	Elevation (m asl)	
297182	4023891	425	
Topographical siting	Interpretation	Arch evidence	
hilltop	2		
Preservation	Doc evidence	4 Letters	
-1	1	No	
Church	Baptistry	Martyrion	
Not known	Not known	Not known	
Reliquary	Cemetery	External walls	
Not known	Not known	Not known	
Communal building	Tower	Accommodation	
Not known	No	Not known	
Cistern	Presses	Monastery SA	
Not known	Not known		
Distance to settlement	Nearest settlement	Distance to route	Tchalenko
2.54	Set71		<input checked="" type="checkbox"/>
Visibility			
Yes			
Notes			
No notes.			

ID	Name	Area	
137	Shadar	Jebel Halaqa	
Location			
4km NW of Qal'at Sim'an			
Location certainty	Latitude	Longitude	
4	36.82773	36.36017	
x	y	Elevation (m asl)	
305099	4026089	325	
Topographical siting	Interpretation	Arch evidence	
valley bottom	2		
Preservation	Doc evidence	4 Letters	
-1	2	No	
Church	Baptistery	Martyrion	
Not known	Not known	Not known	
Reliquary	Cemetery	External walls	
Not known	Not known	Not known	
Communal building	Tower	Accommodation	
Not known	No	Not known	
Cistern	Presses	Monastery SA	
Not known	Not known		
Distance to settlement	Nearest settlement	Distance to route	Tchalenko
0.00	Set74		<input checked="" type="checkbox"/>
Visibility			
Yes			
Notes			
No notes.			

ID	Name	Area	
138	Al-Siyyar	Jebel Sim'an	
Location			
2km NW of Uram al-Suhgri			
Location certainty	Latitude	Longitude	
4	36.88049	36.14819	
x	y	Elevation (m asl)	
309318	4002466	451	
Topographical siting	Interpretation	Arch evidence	
slope	2		
Preservation	Doc evidence	4 Letters	
-1	1	Yes	
Church	Baptistery	Martyrion	
Not known	Not known	Not known	
Reliquary	Cemetery	External walls	
Not known	Not known	Not known	
Communal building	Tower	Accommodation	
Not known	No	Not known	
Cistern	Presses	Monastery SA	
Not known	Not known		
Distance to settlement	Nearest settlement	Distance to route	Tchalenko
3.41	Set17		<input checked="" type="checkbox"/>
Visibility			
No			
Notes			
No notes.			

ID	Name	Area	
139	Tawami	Jebel Halaqa	
Location			
4km SE of Dana			
Location certainty		Latitude	Longitude
3		36.81570	36.19375
x		y	Elevation (m asl)
303602		4007650	435
Topographical siting		Interpretation	Arch evidence
		2	
Preservation		Doc evidence	4 Letters
-1		0	Yes
Church		Baptistry	Martyrion
Not known		Not known	Not known
Reliquary		Cemetery	External walls
Not known		Not known	Not known
Communal building		Tower	Accommodation
Not known		No	Not known
Cistern		Presses	Monastery SA
Not known		Not known	
Distance to settlement		Nearest settlement	Distance to route Tchalenko
0.00		Set16	<input checked="" type="checkbox"/>
Visibility			
Yes			
Notes			
No notes.			

ID	Name	Area	
140	Zuq al-Kabir	Jebel Sim'an	
Location			
1km E of Kharab Shams			
Location certainty		Latitude	Longitude
1		36.95480	36.33795
x		y	Elevation (m asl)
316449		4023375	520
Topographical siting	Interpretation	Arch evidence	
slope	2		
Preservation	Doc evidence	4 Letters	
-1	1	Yes	
Church	Baptistry	Martyrion	
Not known	Not known	Not known	
Reliquary	Cemetery	External walls	
Not known	Not known	Not known	
Communal building	Tower	Accommodation	
Not known	No	Not known	
Cistern	Presses	Monastery SA	
Not known	Not known		
Distance to settlement	Nearest settlement	Distance to route	Tchalenko
0.00	Set86		<input checked="" type="checkbox"/>
Visibility			
Yes			
Notes			
No notes.			

ID	Name	Area
141	Al-Juwaniya	Jebel Barisha
Location		
S of Plain of Shelf, between Jebel al-A'la and Jebel Barisha		
Location certainty	Latitude	Longitude
1	36.55782	36.09863
x	y	Elevation (m asl)
280146	3997650	698
Topographical siting	Interpretation	Arch evidence
hilltop	2	
Preservation	Doc evidence	4 Letters
-1	0	No
Church	Baptistery	Martyrion
Not known	Not known	Not known
Reliquary	Cemetery	External walls
Not known	Not known	Not known
Communal building	Tower	Accommodation
Not known	No	Not known
Cistern	Presses	Monastery SA
Not known	Not known	
Distance to settlement	Nearest settlement	Distance to route Tchalenko
0.00	Set145	<input checked="" type="checkbox"/>
Visibility		
Yes		
Notes		
No notes.		