

'Curiouser and Curiouser': John Singer Sargent's
Cosmopolitan Aesthetics

2 Volumes

Volume II of II

Elizabeth Susannah Renes

Ph.D.

UNIVERSITY OF YORK

HISTORY OF ART

January 2015

Illustrations

Illustrations



Figure 1
Sir John Lavery, *The Opening of the Modern Foreign and Sargent Galleries at the Tate Gallery, 26 June 1926, 1929*, Oil on Canvas, 85.7 x 116.8 cm. Tate, London.

Illustrations



Figure 2
John Singer Sargent, *Carnation, Lily, Lily, Rose*, 1885–86, Oil on Canvas, 174 x
153.7 cm.
Tate, London.

Illustrations



Figure 3

John Singer Sargent, *Claude Monet Painting By the Edge of the Wood*, 1885, Oil on Canvas, 54 x. 64.8 cm. Tate, London.

Illustrations



Figure 4
John Singer Sargent, *A Morning Walk*, 1888, Oil on Canvas, 67.3 x 50.2 cm.
Private Collection.

Illustrations



Figure 5

Claude Monet, *Woman with a Parasol – Madame Monet and Her Son*, 1875, Oil on Canvas, 119.4 x 99.7 cm. National Gallery of Art, Washington, D.C.

Illustrations



Figure 6
John Singer Sargent, *Madame X*, 1883–84, Oil on Canvas, 208.6 x 109.9 cm.
Metropolitan Museum of Art, New York.

Illustrations



Figure 7
Édouard Manet, *Study for Le Balcon: Portrait of Mademoiselle Claus*, 1868, Oil on Canvas, 111 x 70cm. Ashmolean Museum, Oxford.

Illustrations



Figure 8
Édouard Manet, *Iris*, 1880, Watercolour on Paper, 35.5 x 25.4 cm. Private Collection.

Illustrations



Figure 9
John Singer Sargent, *Fumée D'Ambergris*, 1880, Oil on Canvas, 139.1 x 90.6cm.
Sterling and Francine Clark Art Institute, Williamstown.

Illustrations



Figure 10
John Singer Sargent, *Portrait D'Enfants* or *The Daughters of Edward Darley Boit*,
1882, Oil on Canvas, 221.9 x 222.5 cm. Museum of Fine Arts, Boston.

Illustrations



Figure 11
Sir John Everett Millais, *Autumn Leaves*, 1856, Oil on Canvas, 104.3 x 74 cm.
Manchester City Art Galleries, Manchester.

Illustrations



Figure 12

Pierre Auguste Renoir, *Children's Afternoon at the Wargemont*, 1884, Oil on Canvas, 173 x 127 cm. Alte Nationalgalerie, Staatliche Museen Ze Berlin.

Illustrations



Figure 13
John Singer Sargent, *Margaret Stuyvescent Rutherford White or Mrs. Henry White*, 1883, Oil on Canvas, 225.1 x 143.8 cm. Corcoran Gallery of Art, Washington, D.C.

Illustrations



Figure 14

John Singer Sargent, *En Route Pour la Pêche* or *Oyster Gatherers at Cancale*, 1878, Oil on Canvas, 78.8 x 122.8 cm. Corcoran Gallery of Art, Washington, D.C.

Illustrations



Figure 15

James McNeill Whistler, *Symphony in White No. 1: The White Girl*, 1862, Oil on Canvas, 213 x 107.9 cm. National Gallery of Art, Washington, D.C.

Illustrations



Figure 16
James McNeill Whistler, *Symphony in White No. 2: The Little White Girl*, 1864, Oil
on Canvas, 76.5 x 51.1 cm. Tate, London.

Illustrations



Figure 17
Dante Gabriel Rossetti, *Ecce Ancilla Domini!* (*The Annunciation*), 1849–50, Oil on Canvas, 72.4 x 41.9 cm. Tate, London.

Illustrations



Figure 18
John Singer Sargent, *El Jaleo*, 1882, Oil on Canvas, 232 x 348 cm, Isabella
Stewart Gardner Museum, Boston.

Illustrations

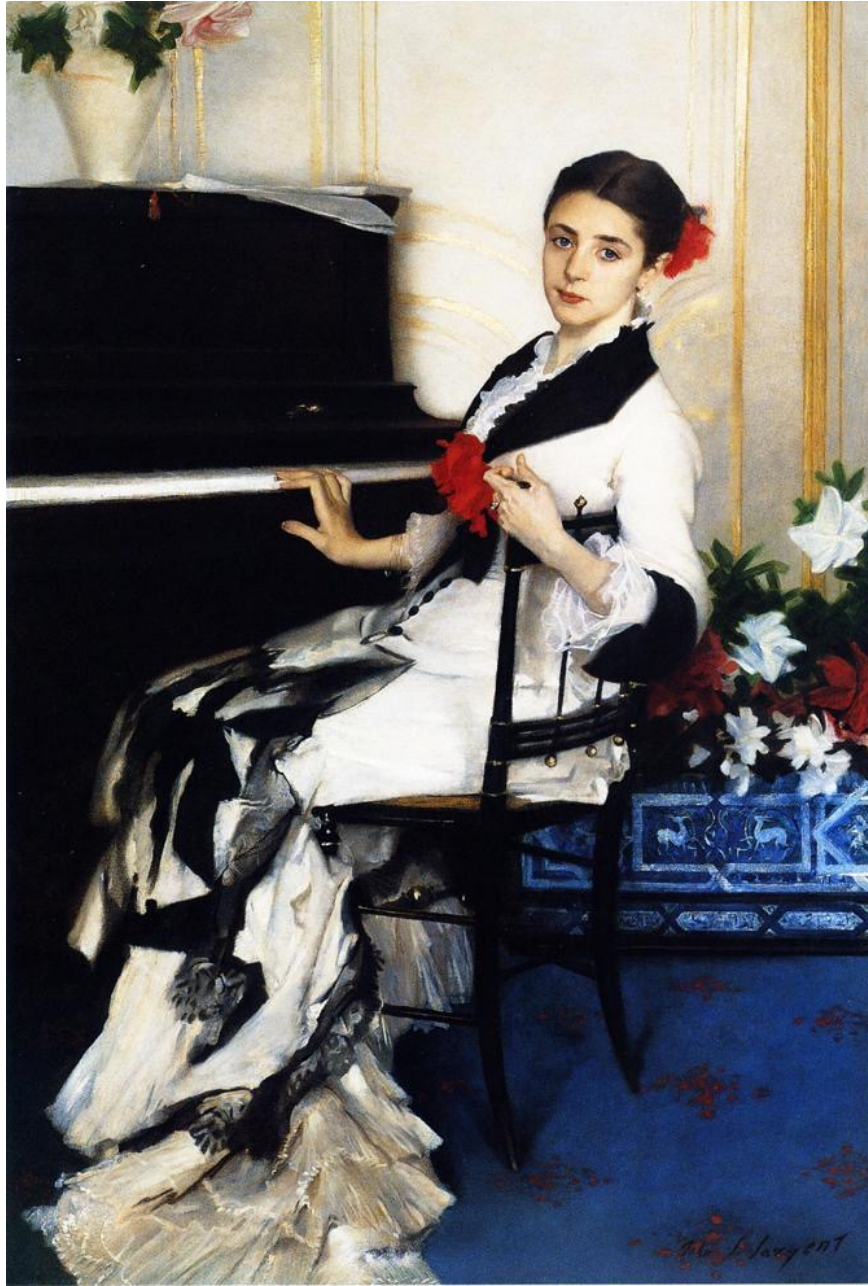


Figure 19
John Singer Sargent, *Madame Ramón Subercaseaux*, 1880–81, Oil on Canvas,
165.1 x 109.9 cm. Private Collection.

Illustrations



Figure 20

John Singer Sargent, *Madame Édouard Pailleron*, 1879, Oil on Canvas, 208.3 x 100.3 cm. Corcoran Gallery of Art, Washington, D.C.

Illustrations



Figure 21

John Singer Sargent, *Neapolitan Children Bathing*, 1879, Oil on Canvas, 267 x 413 cm. Francine and Sterling Clark Art Institute, Williamstown.

Illustrations



Figure 22
John Singer Sargent, *Carolus-Duran*, 1879, Oil on Canvas, 116.8 x 95.9 cm.
Sterling and Francine Clark Art Institute, Williamstown, Massachusetts.

Illustrations



Figure 23
John Singer Sargent, *The Pailleron Children*, 1881, Oil on Canvas, 152.4 x 175.3
cm. Des Moines Art Center, Des Moines, Iowa.

Illustrations

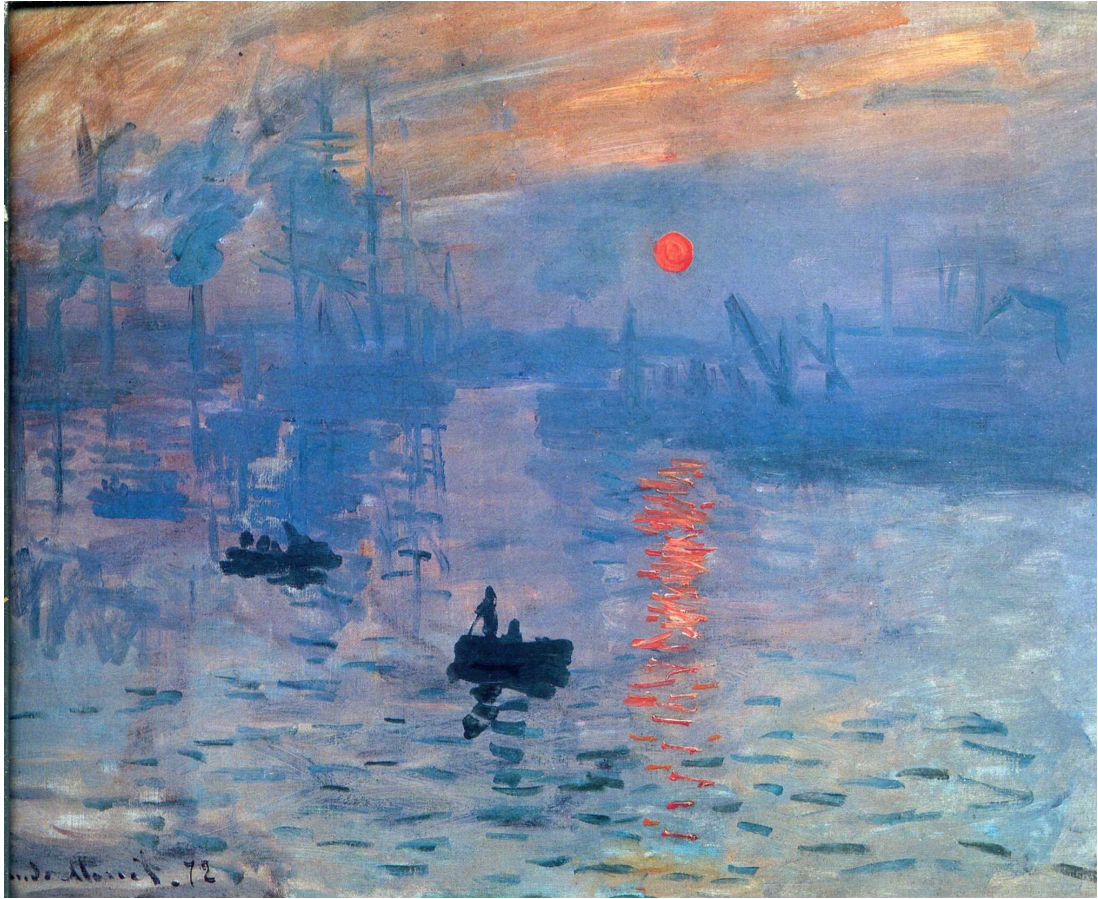


Figure 24

Claude Monet, *Impression, Soleil Levant*, 1872, Oil on Canvas, 48 x 63 cm. Musée Marmottan Monet, Paris.

Illustrations



Figure 25
John Singer Sargent, *Dans les Oliviers à Capri*, 1878, Oil on Canvas, 76.2 x 63.5
cm. Private Collection.

Illustrations



Figure 26
John Singer Sargent, *Mrs. Thomas Wodehouse Legh*, 1884, Oil on Canvas, 119.4 x 94 cm. Private Collection.

Illustrations



Figure 27
John Singer Sargent, *Paul Helleu*, 1882–85, Watercolour on Paper, 23.5 x 37.3
cm. Private Collection.

Illustrations

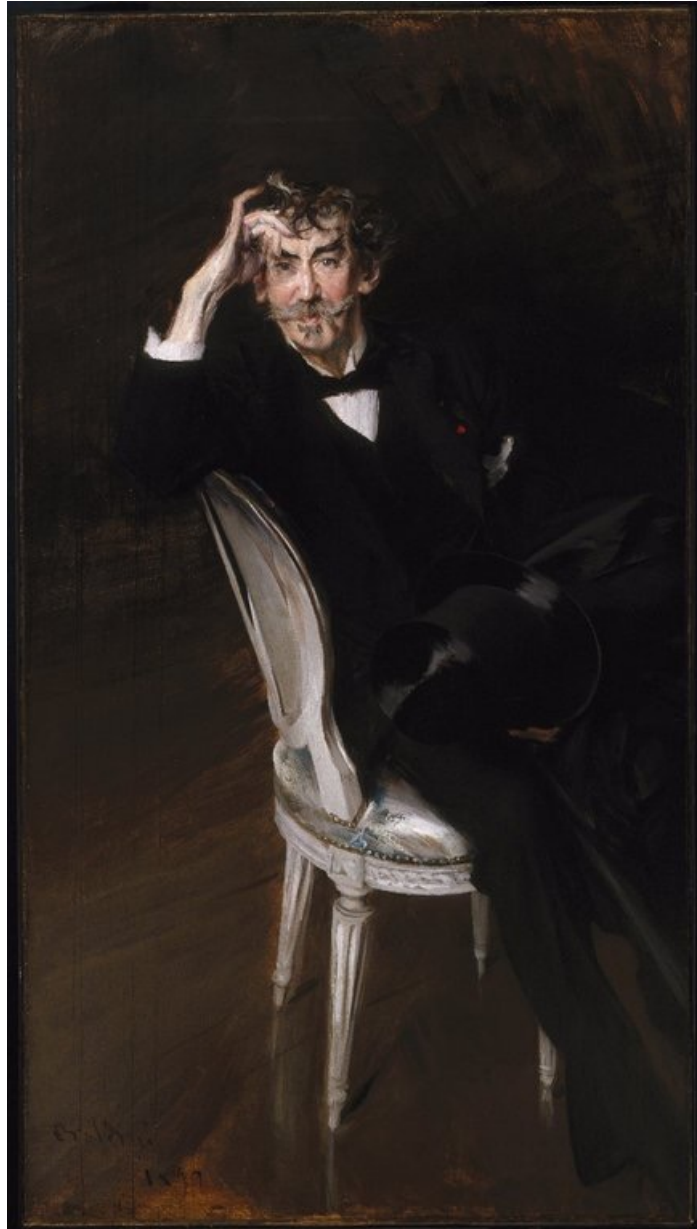


Figure 28

Giovanni Boldini, *Portrait of James McNeill Whistler*, 1897, Oil on Canvas, 170.8 x 94.6 cm. Brooklyn Museum of Art, New York City.

Illustrations



Figure 29
Violet Paget (Vernon Lee) as a child, c. 1870. Black and white photographic print. Colby College, Vernon Lee Papers, Waterville, Maine.

Illustrations



Figure 30
John Singer Sargent, *Vernon Lee*, 1881, Oil on Canvas, 53.7 x 43.2cm. Tate,
London.

Illustrations



Figure 31
John Singer Sargent, *Portrait of Vernon Lee*, 1889, Graphite pencil on Paper, 33.7
x 22.9 cm. Ashmolean Museum, Oxford.

Illustrations



Figure 32
Charles Auguste-Émile Durand, or Carolus-Duran, *La Dame Au Gant*, 1869, Oil
on Canvas, 228 x 164 cm. Musée D'Orsay, Paris.

Illustrations



Figure 33
Diego Velázquez, *Las Meninas* (detail), 1656, Oil on Canvas, 318 x 276 cm. Museo del Prado, Madrid.

Illustrations



Figure 34
Léon Bonnat, *Jules Grévy*, 1880, Oil on Canvas, 111 x 147 cm. Musée D'Orsay, Paris.

Illustrations



Figure 35

Charles Auguste-Émile Durand, or Carolus-Duran, *The Convalescent*, 1860, Oil on Canvas, 99 x 126 cm. Musée D'Orsay, Paris.

Illustrations



Figure 36

Charles Auguste-Émile Durand, or Carolus-Duran, *Murdered, or The Assassination*, 1866, Oil on Canvas, 280 x 420 cm. Palais des Beaux-Arts, Lille.

Illustrations



Figure 37

John Singer Sargent, *Sketch for Carolus-Duran*, 1878, Oil on panel, 34.3 x 26.7 cm. Estate of Mrs. Norman B. Woolworth.

Illustrations

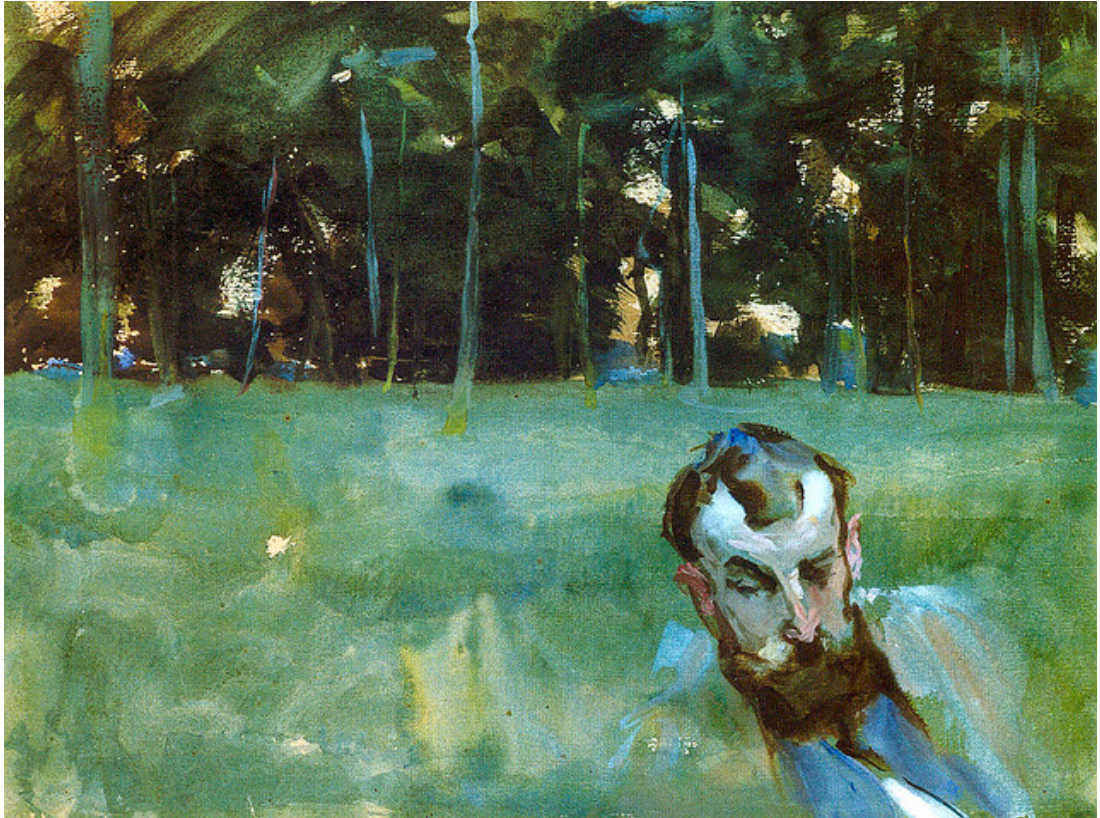


Figure 38
John Singer Sargent, *George Hitchcock*, 1880, Watercolour on paper, 22.7 x 29
cm. Private Collection.

Illustrations



Figure 39
John Singer Sargent, *Judith Gautier or A Gust of Wind*, c. 1883–85, Oil on canvas,
61.3 x 38.1 cm. Private Collection.

Illustrations

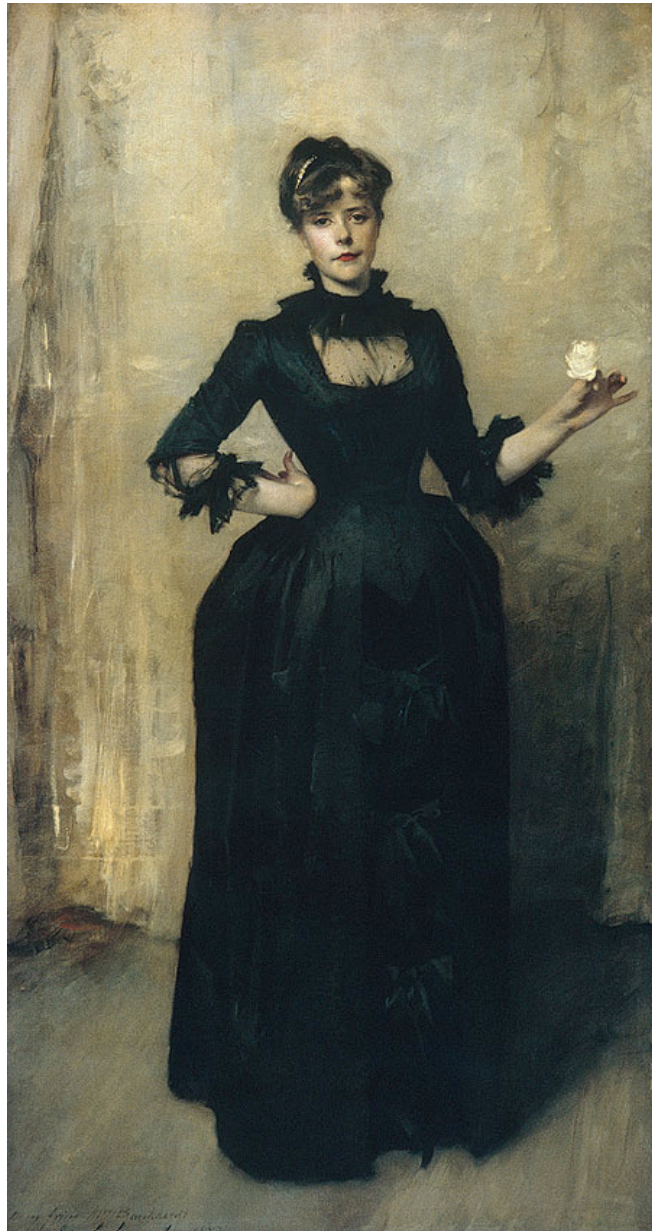


Figure 40
John Singer Sargent, *Lady with a Rose (Charlotte Louise Burckhardt)*, 1882, Oil
on Canvas, 213.4 x 113.7cm. Metropolitan Museum of Art, New York.

Illustrations



Figure 41
John Singer Sargent, *Portrait of Henry James*, 1885, Dimensions Unknown, Lost.

Illustrations

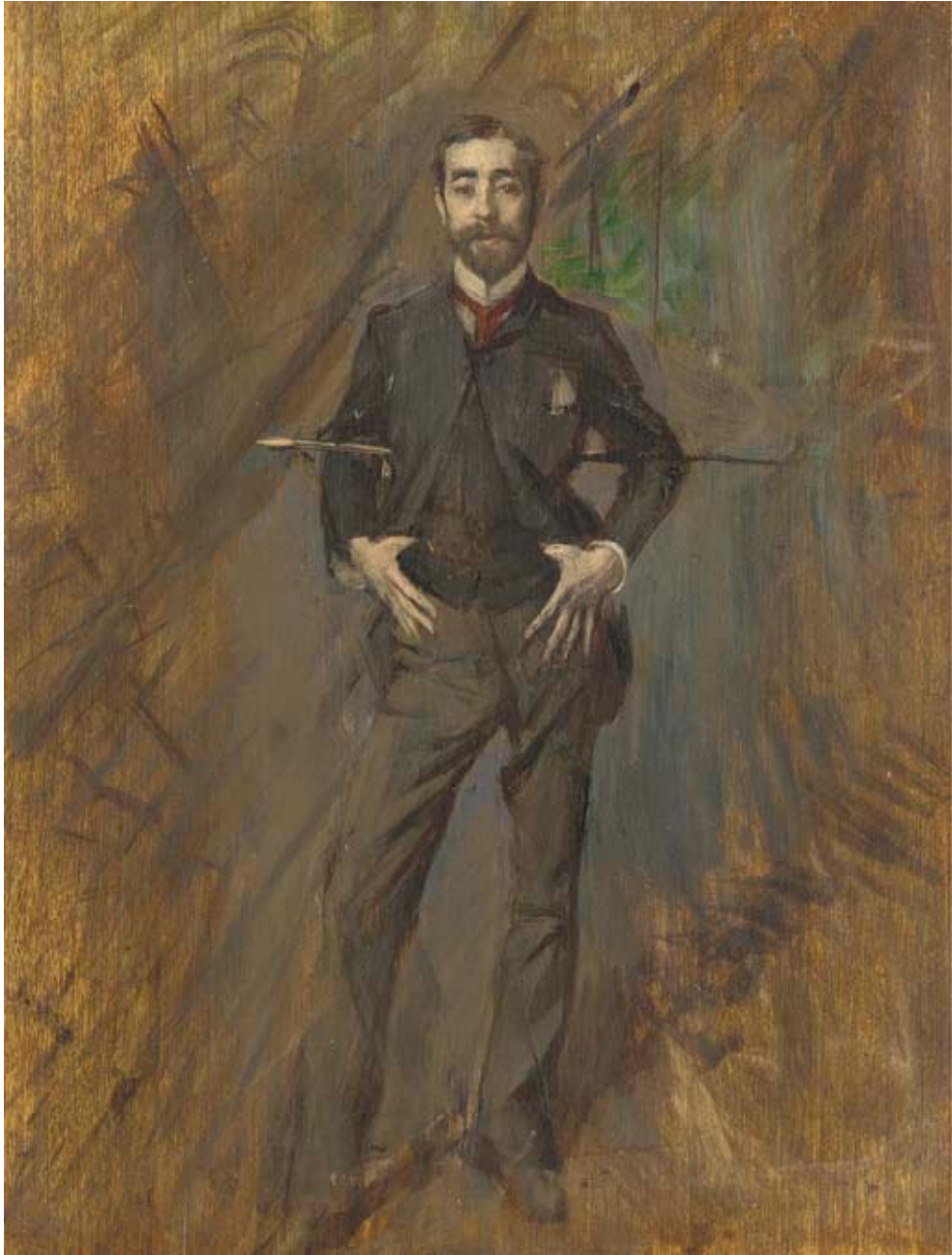


Figure 42
Giovanni Boldini, *A Portrait of John Singer Sargent (Standing)*, c. 1890, Oil on Panel, 32.6 x 28 cm. Private Collection.

Illustrations



Figure 43
Giovanni Boldini, *Unfinished Portrait of John Singer Sargent*, c. 1890, 27 x 22 cm.
Private Collection.

Illustrations



Figure 44
John Singer Sargent, *Portrait of Henry James*, 1912, Charcoal on Paper, 61.8 x 41
cm, The Royal Collection, Windsor Castle.

Illustrations



Figure 45
John Singer Sargent, *Henry James*, 1913, Oil on Canvas, 85.1 x 67.3 cm, National Portrait Gallery, London.

Illustrations



Figure 46
Henri Fantin-Latour, *Hommage à Delacroix*, 1864, Oil on Canvas, 160 x 250 cm,
Musée D'Orsay, Paris.

Illustrations

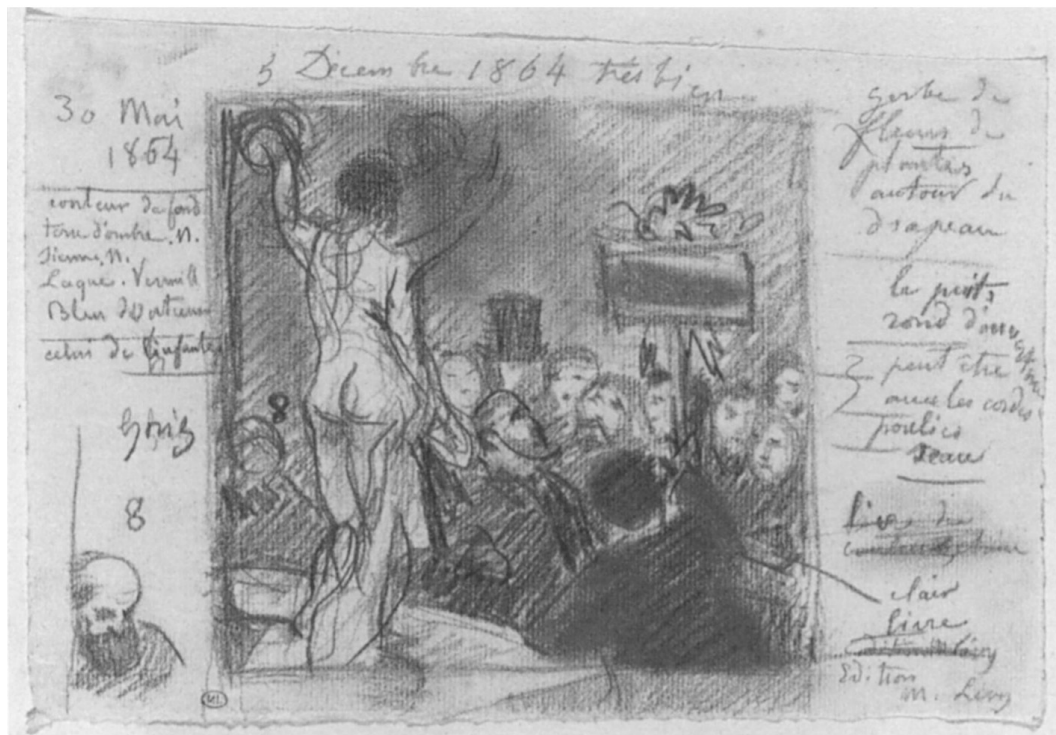


Figure 47

Henri Fantin-Latour, study for *Le Toast! Hommage à Verité*, n.d. (probably May 1865). Graphite and Pierre Noire on Paper, 14.3 x 23.1 cm. Département des Arts Graphiques, Musée du Louvre, Paris.

Illustrations



Figure 48

John Singer Sargent, *Venetian Women in the Palazzo Rezzonico*, 1880–81, Oil on Canvas, 45.1 x 63.5 cm. Private Collection.

Illustrations



Figure 49
Ralph Curtis, *James McNeill Whistler at a Party*, 1879–80, Oil on Canvas, 116.8 x 80 cm. Private Collection.

Illustrations



Figure 50
John Singer Sargent, *Dr. Pozzi at Home*, 1881, Oil on Canvas, 204.5 x 111.4 cm.
UCLA at the Armand Hammer Museum of Art and Cultural Center, Los Angeles,
CA.

Illustrations



Figure 51

James McNeill Whistler, *Harmony in Red: Lamplight*, 1886, Oil on Canvas, 190.5 x 89.5. Hunterian Museum and Art Gallery, Glasgow.

Illustrations



Figure 52
James McNeill Whistler, *Harmony in White and Ivory: Lady Colin Campbell*,
Destroyed, Dimensions Unknown.

Illustrations



Figure 53
John Singer Sargent, *W. Graham Robertson*, 1894, Oil on Canvas, 230.5 x
118.7cm. Tate, London.

Illustrations



Figure 54

James McNeill Whistler, *Arrangement in Black and Gold: Comte Robert de Montesquiou-Fezensac*, 1891–92, Oil on Canvas, 208.6 x 91.8 cm. Frick Collection, New York.

Illustrations



Figure 55

James McNeill Whistler, *Arrangement in Black: The Lady with the Yellow Buskin: Portrait of Lady Archibald Campbell*, 1882, Oil on Canvas, 218.4 x 110.5cm.
Philadelphia Museum of Art.

Illustrations



Figure 56
John Singer Sargent, *Mrs. Albert Vickers*, 1884, Oil on Canvas, 208.3 x 99.1 cm.
Virginia Museum of Fine Arts, Richmond.

Illustrations



Figure 57
John Singer Sargent, *The Misses Vickers*, 1884, Oil on Canvas, 137.8 x 182.9cm.
Sheffield Galleries and Museums Trust, Sheffield.

Illustrations



Figure 58
John Singer Sargent, *A Capriote*, 1878, Oil on Canvas, 76.8 x 63.1 cm. Museum of Fine Arts, Boston.

Illustrations



Figure 59

John Singer Sargent, *Capri* (Alternative Titles: *Rosita* or *Rosita, Capri*), 1878, Oil on Canvas, 49.5 x 64.1 cm. Private Collection.

Illustrations

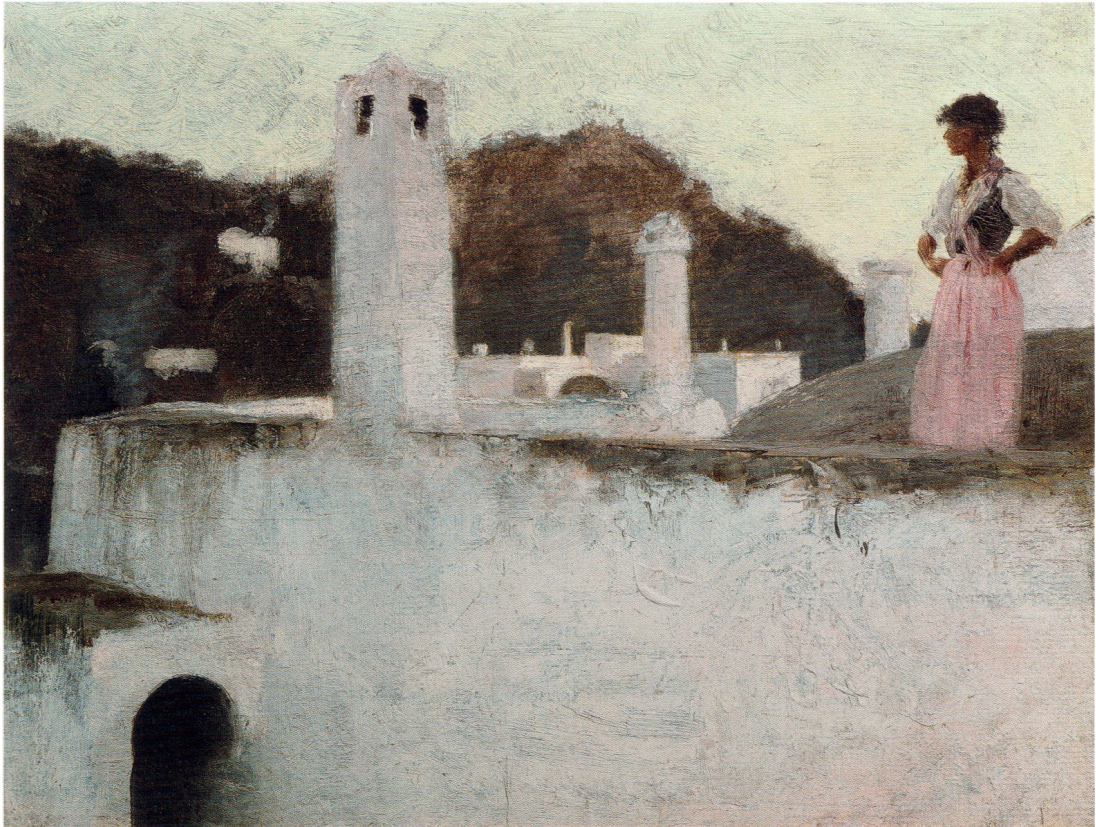


Figure 60
John Singer Sargent, *View of Capri*, 1878, Oil on Academy Board, 26 x 33.9 cm.
Yale University Art Gallery, New Haven.

Illustrations



Figure 61
John Singer Sargent, *Stringing Onions or Italian Interior, Capri*, 1878, Oil on Canvas, 43.2 x 33cm. Private Collection.

Illustrations



Figure 62
John Singer Sargent, *Rosina*, 1878, Oil on Panel, 35.3 x 17.2 cm. Private Collection.

Illustrations



Figure 63
John Singer Sargent, *Head of a Capri Girl or Capri Peasant-Study*, 1878, Oil on
Canvas, 22.9 x 25.4 cm. Private Collection.

Illustrations



Figure 64
John Frederick Lewis, *Liliom Auratum*, 1871, Oil on Canvas, 136.6 x 87.5 cm.
Birmingham Museums and Art Gallery, Birmingham, United Kingdom.

Illustrations



Figure 65
John Singer Sargent, *Capri Girl on a Rooftop* (recto), 1878, Oil on Panel, 24.2 x 33.7 cm. Berger Collection at the Denver Art Museum, Denver, Colorado.



Figure 66
Édouard Manet, *The Spanish Singer (Le Guitarrero)*, 1860, Oil on Canvas, 147.3 x 114.3 cm. The Metropolitan Museum of Art, New York.

Illustrations



Figure 67
John Singer Sargent, *Santa Maria le Blanca, Toledo*, 1879, Oil on Panel, 34.3 x
25.3 cm. Private Collection.

Illustrations

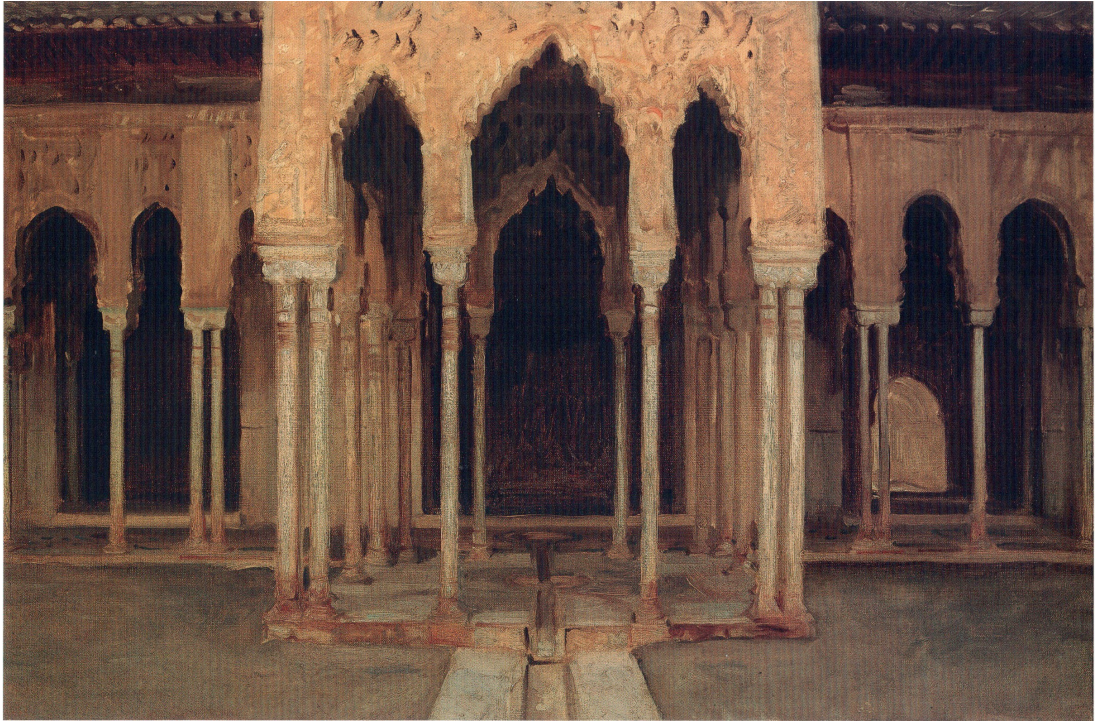


Figure 68
John Singer Sargent, *Alhambra, Patio de los Leones*, 1879, Oil on Canvas, 47.7 x 77.5 cm. Private Collection.

Illustrations



Figure 69
John Singer Sargent, *Alhambra, Patio de los Leones or Architectural Sketch*, 1879,
Watercolor, gouache and pencil on Paper, 24.8 x 34.3 cm. The Metropolitan
Museum of Art, New York.

Illustrations



Figure 70
John Singer Sargent, *An Archway*, 1879, Oil on Canvas, 47 x 37.5 cm. Private Collection.

Illustrations



Figure 71
John Singer Sargent, *The Alhambra Vase*, 1879, Watercolour on Paper, 34.3 x
25.3 cm. The Walters Art Museum, Baltimore, Maryland.

Illustrations



Figure 72
John Singer Sargent, *Sketch of a Spanish Crucifix*, 1879, Oil, Support and
Dimensions Unknown, Untraced.

Illustrations



Figure 73
John Singer Sargent, *Sketch of a Spanish Madonna*, 1879–80, Oil on wood, 34.9 x 26cm. Metropolitan Museum of Art, New York.

Illustrations



Figure 74

John Singer Sargent, *The Spanish Dance*, c. 1879–82, Oil on Canvas, 89.5 x 84.5 cm. Hispanic Society of America, New York.

Illustrations

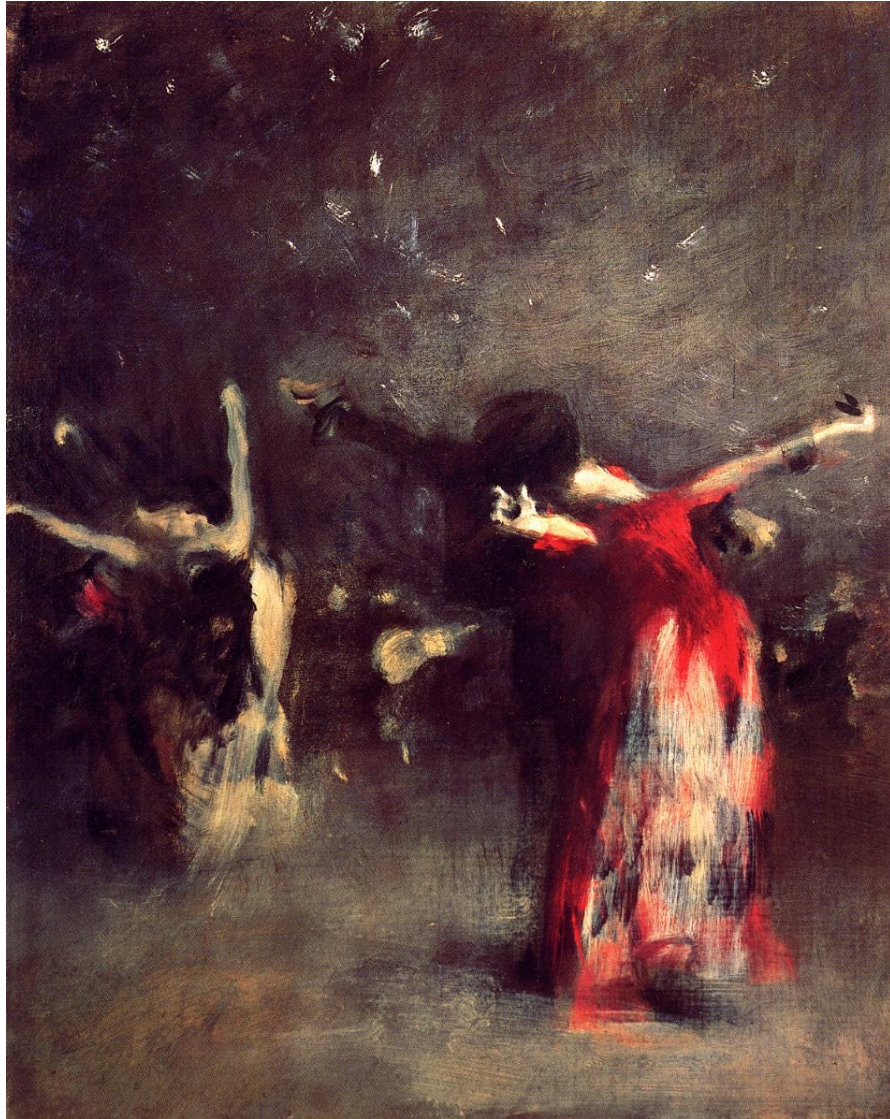


Figure 75

John Singer Sargent, *Study for The Spanish Dance or Sketch for Spanish Dancers - Night*, 1879–90, Oil on Canvas, 49.5 x 39.7 cm. Private Collection.

Illustrations



Figure 76

John Singer Sargent, *Study for The Spanish Dance or Study for 'At Seville'*, 1879–80, Oil on Canvas, 72.3 x 48.2 cm. The Nelson-Atkins Museum of Art, Kansas City, Missouri.

Illustrations



Figure 77

James McNeill Whistler, *Nocturne in Black and Gold: The Falling Rocket*, 1875, Oil on Panel, 60.2 x 46.7 cm. Detroit Institute of Arts, Detroit, Michigan.

Illustrations



Figure 78
John Singer Sargent, *Spanish Dancer*, 1880–81, Oil on Canvas, 222.9 x 151cm.
Private Collection.

Illustrations



Figure 79

John Singer Sargent, *Sketch of a Neapolitan Boy or Head of a Sicilian Boy; Head of a Neapolitan Boy, wearing a red cap; Neapolitan Boy (profile)*, 1878, Oil on Canvas, 48.3 x 34.3 cm. Private Collection.

Illustrations



Figure 80
Lord Frederic Leighton, *Moorish Garden; A Dream of Granada*, 1874, Oil on Canvas, 104 x 106.6 cm. Private Collection.

Illustrations

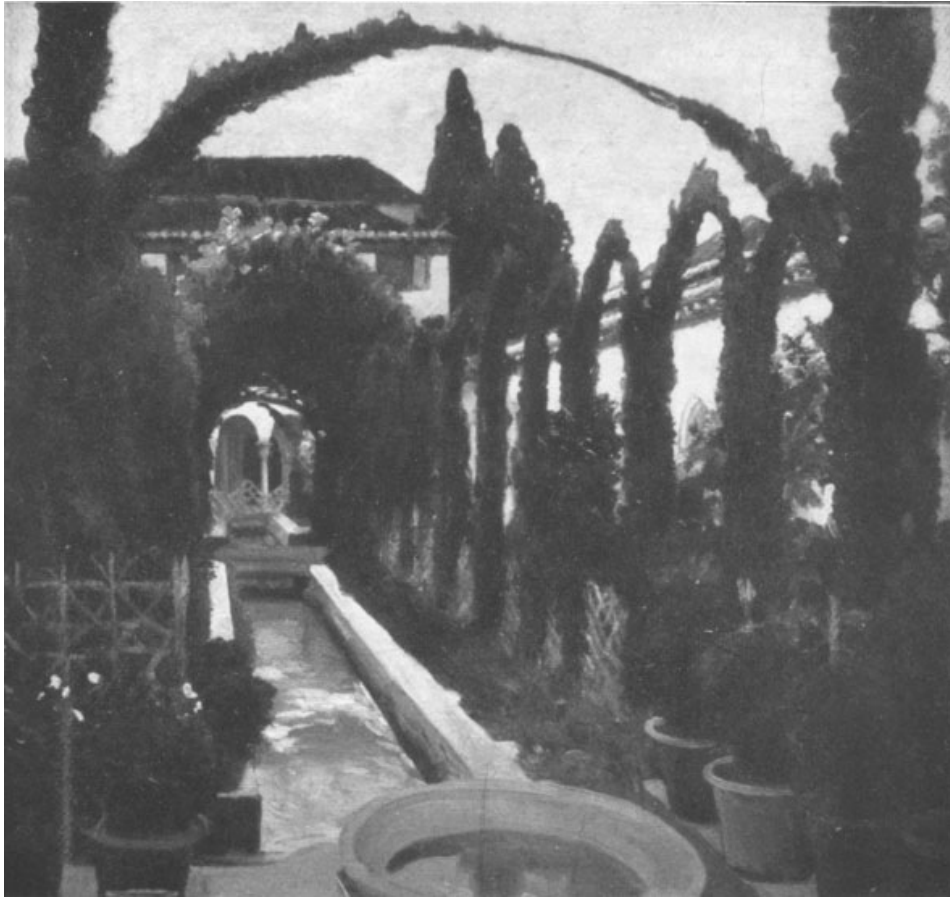


Figure 81
Lord Frederic Leighton, *Garden of Generalife, Grenada*, 1873, Support and
Materials Unknown, Untraced.

Illustrations



Figure 82

John Singer Sargent, *Venetian Bead Stringers* or *Venetian Interior*, 1880–82, Oil on Canvas, 67 x 78.1 cm. Albright-Knox Art Gallery, Buffalo, New York.

Illustrations



Figure 83
John Singer Sargent, *Venetian Water Carriers*, 1880–81, Oil on Canvas, 64.5 x 70.5 cm, Worcester Art Museum, Worcester, Massachusetts.

Illustrations



Figure 84

John Singer Sargent, *Venetian Glass Workers*, 1880–81, Oil on Canvas, 56.5 x 84.5 cm. The Art Institute of Chicago, Chicago, Illinois.

Illustrations



Figure 85
John Singer Sargent, *The Sulphur Match*, 1882, Oil on Canvas, 58.4 x 41.3 cm.
Collection of Marie and Hugh Halff, Jr.

Illustrations



Figure 86

John Singer Sargent, *Street in Venice* or *Une Rue à Venise*; *Venetian Street*; *Venetian Scene*; *Venice*, 1882, Oil on Panel, 45.1 x 54 cm. National Gallery of Art, Washington, D.C.

Illustrations



Figure 87

John Singer Sargent, *A Street in Venice, or The Wine Shop*, 1880–81, Oil on Canvas, 75.1 x 52.4 cm. Sterling and Francine Clark Art Institute, Williamstown, Massachusetts.

Illustrations



Figure 88
John Frederick Lewis, *The Coffee Bearer*, 1857, Oil on Panel, 30.4 x 19cm.
Manchester City Art Galleries, Manchester.

Illustrations

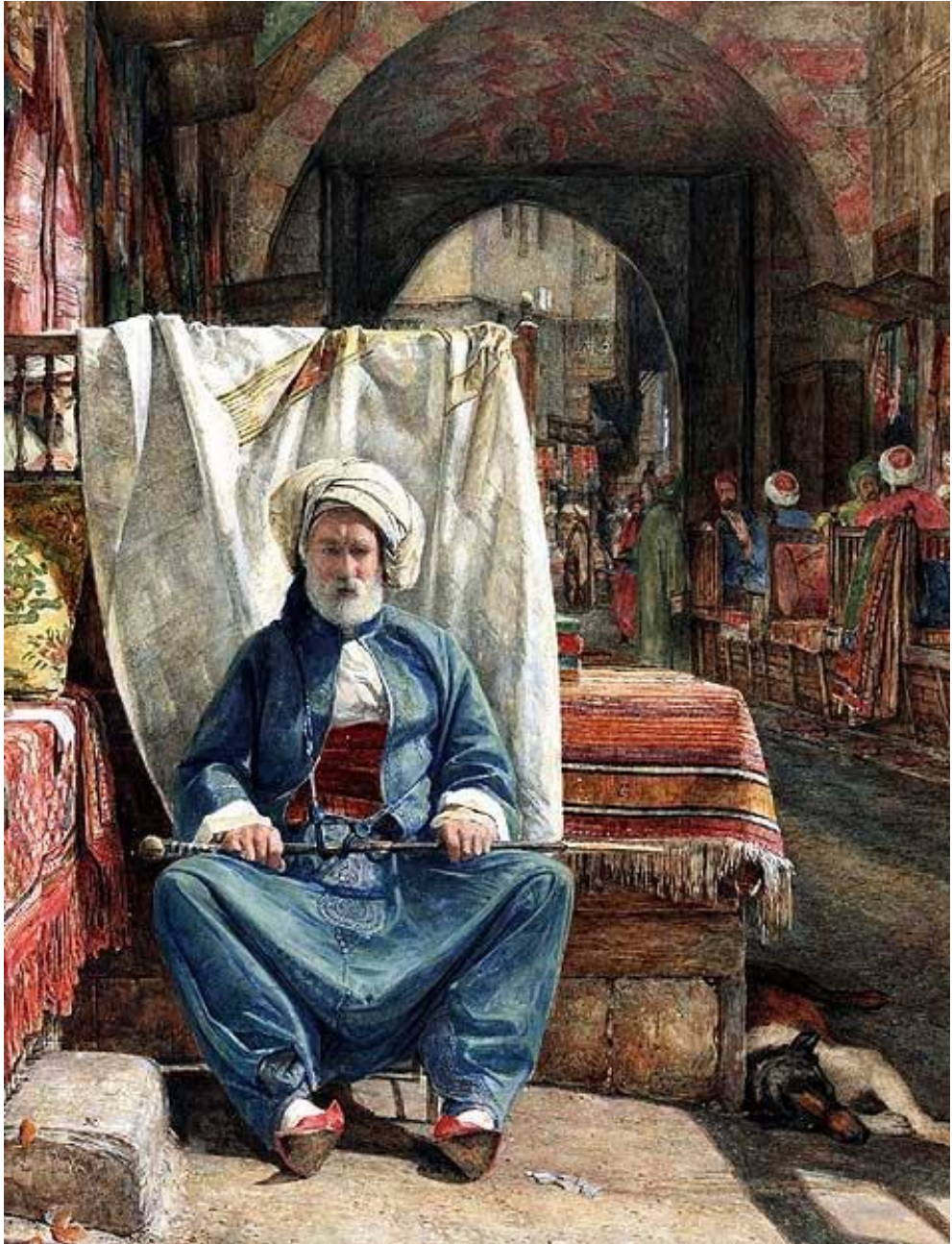


Figure 89
John Frederick Lewis, *In The Bezestein, El Khan Khalil, Cairo or The Carpet Seller*,
1860, Oil on Panel, 66 x 53.5 cm. Private Collection.

Illustrations



Figure 90
Sir John Everett Millais, *Leisure Hours*, 1864, Oil on Canvas, 88.9 x 118.1 cm.
Detroit Institute of Arts, Detroit, Michigan.

Illustrations



Figure 91
Sir John Everett Millais, *Sisters*, 1868, Oil on Canvas, 108 x 108 cm. Private Collection.

Illustrations



Figure 92
Sir John Everett Millais, *Nina Lehmann*, 1868–69, Oil on Canvas, Dimensions
Unknown. Private Collection.

Illustrations



Figure 93
James McNeill Whistler, *Harmony in Grey and Green: Miss Cicely Alexander*,
1872–74, Oil on Canvas, 190.2 x 97.8 cm. Tate, London.

Illustrations



Figure 94
John Singer Sargent, *Robert de Cévrieux*, 1879, Oil on Canvas, 84.5 x 48 cm.
Museum of Fine Arts, Boston.

Illustrations

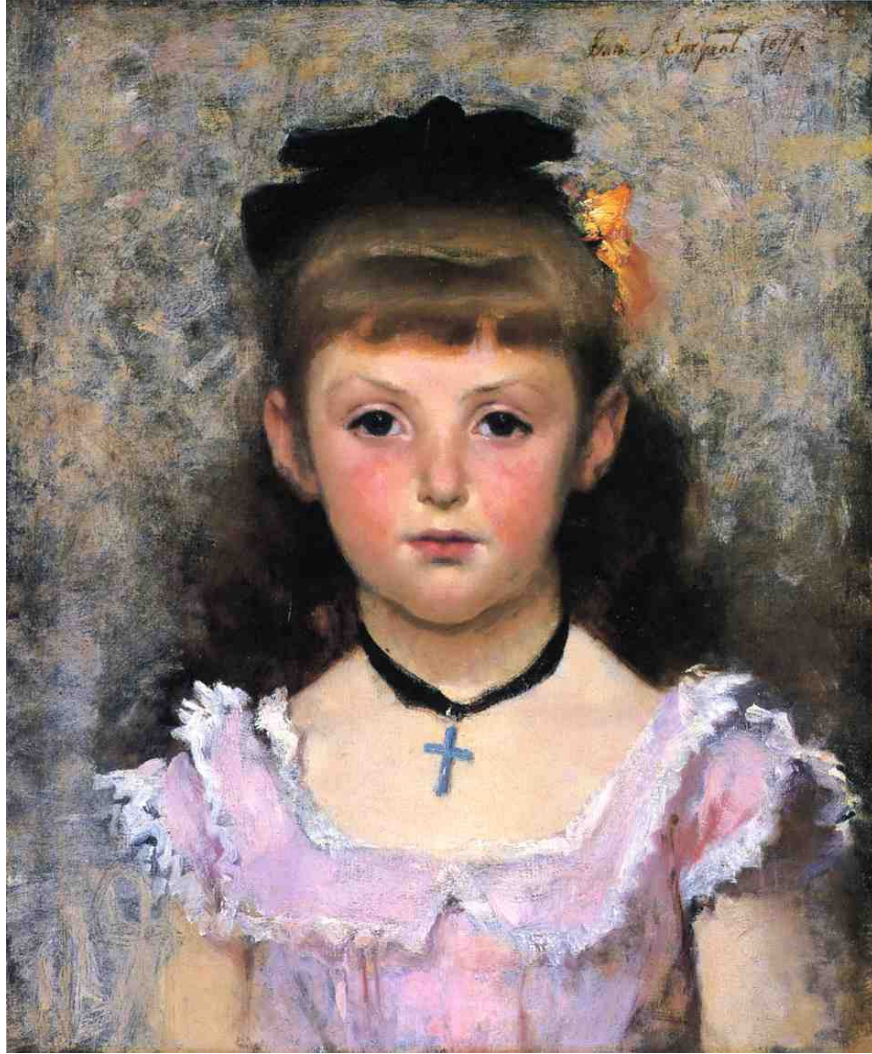


Figure 95
John Singer Sargent, *Jeanne Kieffer*, 1879, Oil on Canvas, 43.2 x 35.6 cm. Private Collection.

Illustrations



Figure 96

Charles Auguste Émile Durand, or Carolus-Duran, *Portrait of the Artist's Daughter (Marie-Anne Carolus-Duran)*, 1874, Oil on Canvas, 130.2 x 85.1 cm.
Fine Art Museum of San Francisco, San Francisco, California.

Illustrations

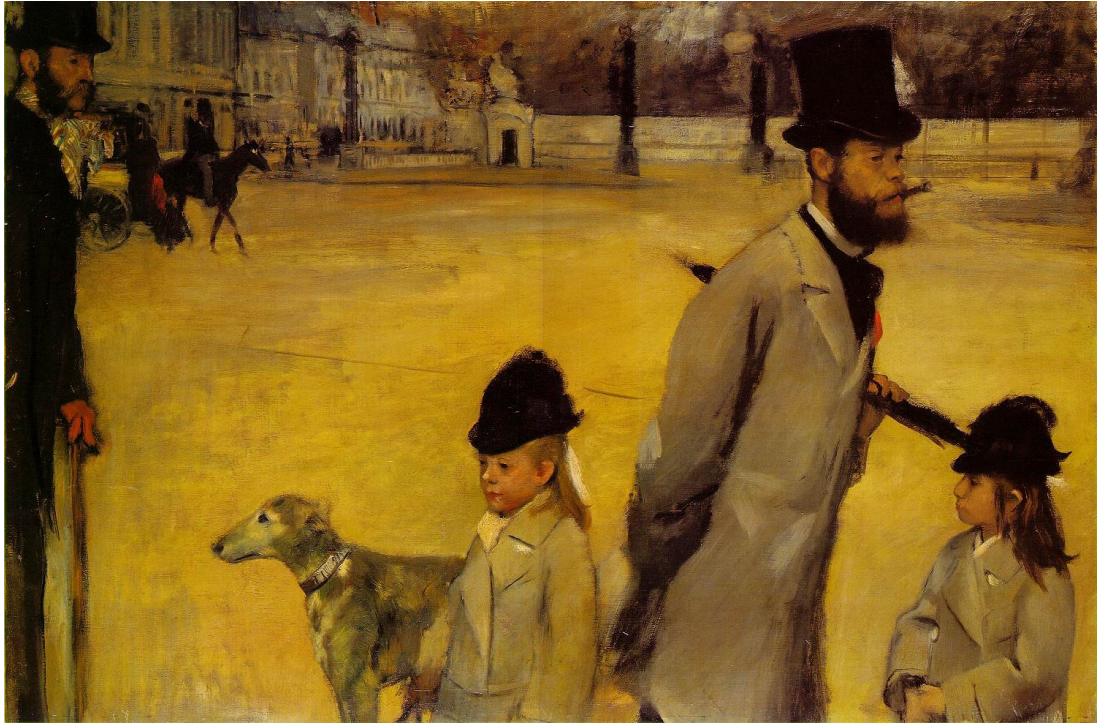


Figure 97

Edgar Degas, *Viscount Lepic and his Daughters Crossing the Place de la Concorde*, 1875, Oil on Canvas, 78.4 x 117.5 cm. Hermitage Museum, Moscow.

Illustrations



Figure 98
William Blake, *The Good and Evil Angels*, c.1795–1805, Ink and Watercolour on paper, 44.5 x 59.4cm. Tate, London.

Illustrations



Figure 99
Edgar Degas, *The Bellelli Family*, 1858–67, Oil on Canvas, 200 x 250 cm. Musée
D'Orsay, Paris.

Illustrations



Figure 100

Edgar Degas, *Giovanna and Giulia Bellelli*, 1865–66, Oil on Canvas, 92 x 73 cm.
Los Angeles County Museum of Art, Los Angeles, California.

Illustrations



Figure 101
Vase with Decoration of Birds and Flowers, Japanese, late Edo period to Meiji Era,
19th Century. Arita ware porcelain with underglaze blue decoration, 188 x 51
cm. Museum of Fine Arts, Boston.

Illustrations



Figure 102

James McNeill Whistler, *La Princesse du Pays de la Porcelaine* in situ in *The Peacock Room*, 1863–65, Oil on Canvas, 199.9 x 116.1 cm. Freer Gallery of Art, Washington, D.C.

Illustrations



Figure 103
Dante Gabriel Rossetti, *The Girlhood of Mary Virgin*, 1848–49, Oil on Canvas,
83.2 x 65.4 cm. Tate Gallery, London.



Figure 104
Diego Velázquez, *Portrait of Pope Innocent X*, 1650, Oil on Canvas, 114 x 119 cm.
Galleria Doria Pamphilj, Rome.

Illustrations



Figure 105
Diego Velázquez, *Infanta Margarita in a Pink Dress*, 1660, Oil on Canvas, 212 x
147 cm. Museo del Prado, Madrid.

Illustrations



Figure 106
Charles Auguste Émile Durand, or Carolus-Duran, *Portrait de la Comtesse de Saint-Cyr*, 1882, Oil on Canvas, 226 x 152.2 cm. Private Collection.

Illustrations

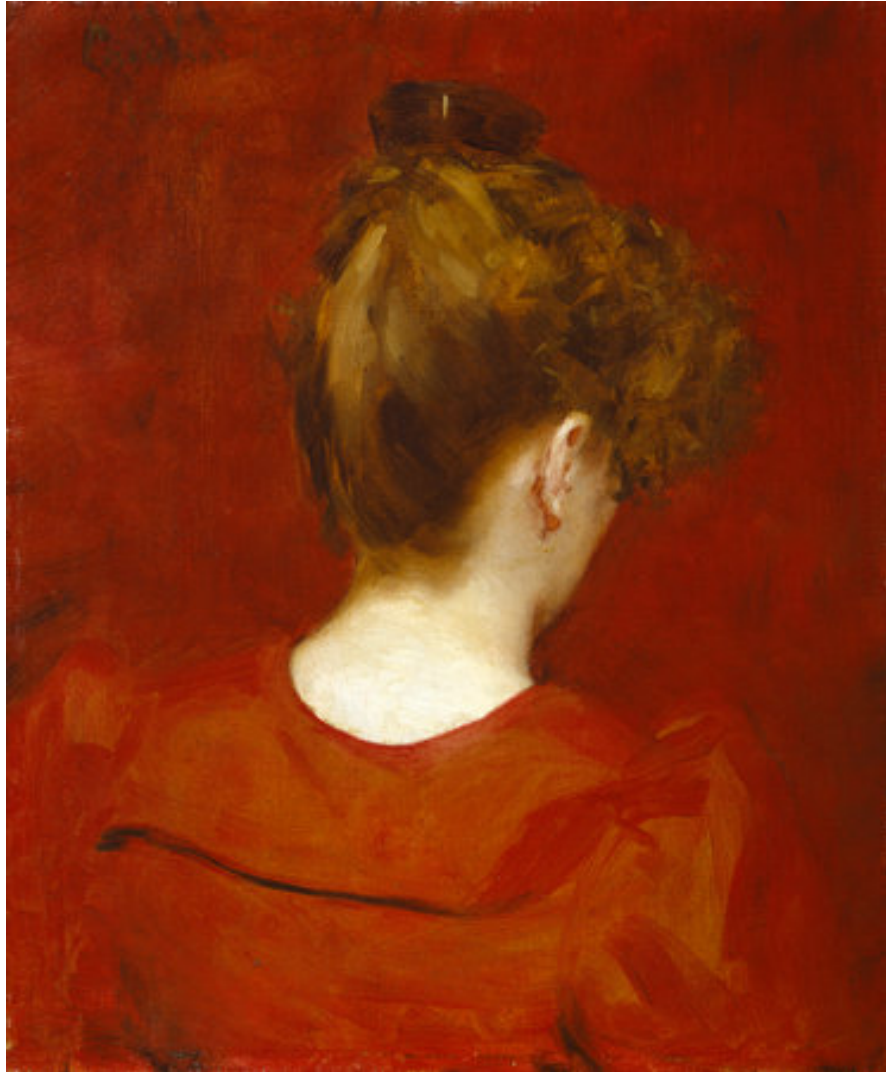


Figure 107

Charles Auguste Émile Durand, or Carolus-Duran, *Study of Lilia*, 1887, Oil on Canvas, 55 x 46 cm. National Gallery of Art, Washington, D.C.

Illustrations



Figure 108

William Merritt Chase, *The Young Orphan, Study of a Girl (At Her Ease)*, 1884, Oil on Canvas, 111.7 x 106.68 cm, National Academy of Design, New York.

Illustrations



Figure 109
Dante Gabriel Rossetti, *Lady Lilith*, 1866–68, Oil on Canvas, 96.5 x 85.1 cm.
Delaware Art Museum, Wilmington.

Illustrations



Figure 110
Dante Gabriel Rossetti, *Sybilla Palmifera*, 1865–70, Oil on Canvas, 98.4 x 85cm.
National Museums Liverpool, Lady Lever Art Gallery, Port Sunlight.

Illustrations



Figure 111

Diego Velázquez, *The Toilet of Venus* or *The Rokeby Venus*, 1647–51, Oil on Canvas, 122.5 x 177 cm. National Gallery of Art, London.



Figure 112
Diego Velázquez, *Infanta Margarita Teresa in White Dress*, 1656, Oil on Canvas,
105 x 88 cm. Kunsthistorisches Museum, Vienna.

Illustrations



Figure 113

Photograph of *Madame X* showing the original fallen shoulder strap, undated, dimensions not given, Albumen print. Metropolitan Museum of Art, Thomas J. Watson Library, New York.



Figure 114
Sandro Botticelli, *Portrait of a Young Woman from Frankfurt*, 1480–85, Tempera
on Wood, 82 x 54 cm, Städelsches Kunstinstitut und Städtische Galerie,
Frankfurt.

Illustrations

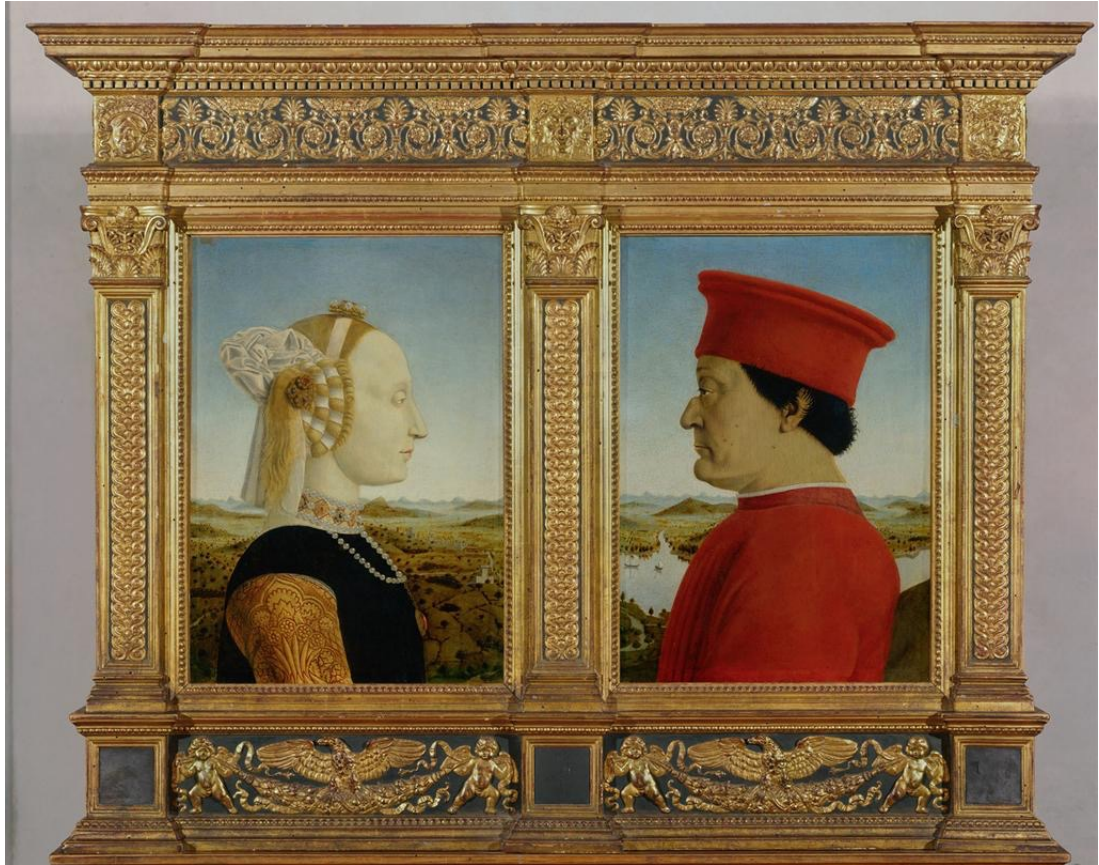


Figure 115
Piero Della Francesca, *Portraits of the Duke and Duchess of Urbino, Federico da Montefeltro and Battista Sforza*, 1465–70, Tempera on Wood, 47 x 33 cm (each panel), Uffizi Gallery, Florence.