

Metamorphosis for Piano

Jonathan Read (2013)

Performance instructions:

In section A repeat bars should be repeated between 3-8 times.

- The performer should feel comfortable in the rhythmic patterns before moving on.

To aid performance of section A bars which are not repeated, but move into repeated bars, have been made smaller to offer some distinction.

In section B all bars are repeated once unless otherwise stated.

Throughout the work all notes should be played as evenly as possible with little feeling of meter unless specified.



Metamorphosis for Piano

Jonathan Read (2013)

A

♩=90-120

Piano

(3-8x) (3-8x) (etc.)

sempre mf

(Sustaining pedal remains down throughout A)

Introduce A♭ accents during last repetition.

Fade out A♭ accents on first statement of bar.

During last repeat begin accenting the B♭.

Fade out B♭ accents on first statement of bar.

Continue to accel. until at a suitable tempo before moving on to B.

accel.

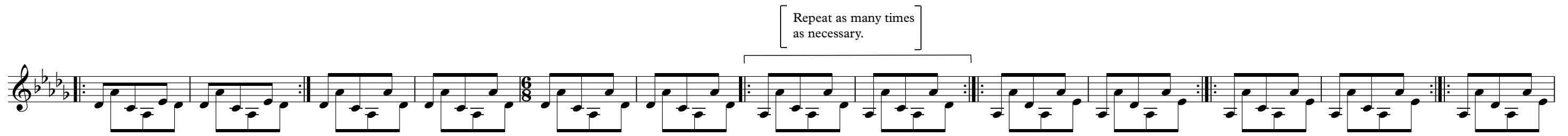
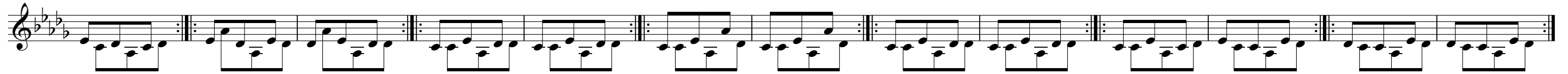
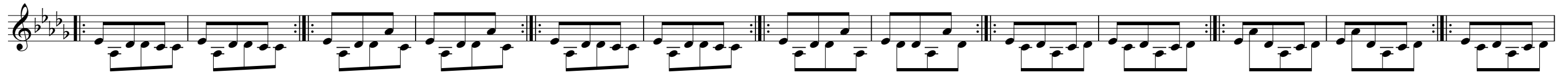
Gradually release pedal during repetitions. Pedal must be fully released before moving on.

B

♩=210-240

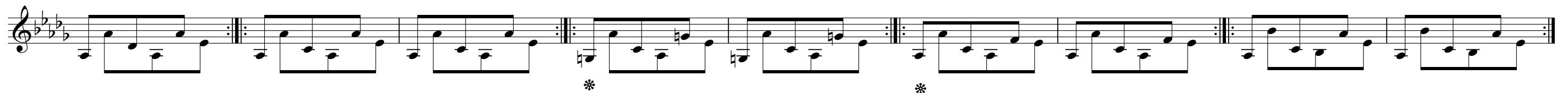


mp
(No Pedal)



mf *espress.*

Gradually suppress sustaining pedal.
Reapply pedal at stars (only on the first
statement of repetition).



Repeat as many times
as necessary. Continue to
slow until ♩=20.

rall.



Release pedal 4" after last note is played.