

Sop. Fl. Vcl. Atem

for Voice (with Loudhailer), flute (+ Bass Flute) and Violoncello

Edward Caine

Sop. Fl. Vcl. Atem

for Voice (with Loudhailer), flute (+ Bass Flute) and Violoncello

Edward Caine

*Commissioned by Late Music
Premiered by Trio Atem in the Late Music Concert Series 1/5/10*

Performance Notes

Voice

This piece requires a small megaphone (the premiere used a toy megaphone). The volume when producing white noise should blend well with the white-noise and air-tone of the other instruments.

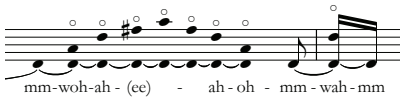
All sung notes should be performed in an "overtone" style i.e. either with the tongue at the back of the mouth to bring out the overtones, or in a Mongolian *isakere* voice.



= Megaphone. Create white noise by blowing into the receiver of the megaphone, using the fricative ('ff' for example) or mouth shape ('w' or 'ah' for example) indicated.



= whistle (through the lips rather than the teeth)



= overtone glissando. Progress up and down the overtones available, no specific pitch. This can be done by progressing through the vowels as indicated.



= specific overtone. Time is given to allow you to reach the overtone and other overtones may sound before you reach the required note. The note can be in any octave as required by your range.

Flute



= Harmonic glissando using the bass note indicated as a fundamental. Take your time to bring out the harmonics. Pitches and rhythm are unspecified.



= Jet whistle (short, sharp blast of air through the instrument).



= Air Tone.

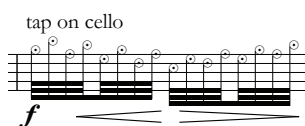


= Key clicks, usually with a short burst of air to increase the volume.



= "T" indicated Slap Tongue.

Cello



= Tap on the body of the cello with your hands - the higher up the stave the notation is, the higher up on the cello (i.e. the closer to the neck).



= bow the tailpiece of the cello.

Sop. Fl. Vcl. Atem

Edward Caine

moderato, constant* ♩ = 50-60

Soprano
mm mm-woh-ah - (ee) - ah-oh - mm-wah-mm mm

Bass Flute
jet whistle
mp mf mp p

Violoncello
pizz. arco 8va pizz. arco
mf mp mf mp

Sop.
3 mm-woh-ah - (ee) - ah-oh - mm-wah-mm mm mm-woh-ah - (ee) - ah-oh - mm

B. Fl.
jet whistle jet whistle
mf mp p mf mp

Vcl.
8va pizz. arco
mf mp

Sop.
5 wah-mm mm mm-woh-ah - (ee) - ah-oh - mm-wah-mm mm

B. Fl.
jet whistle
p mf mp

Vcl.
8va pizz. arco 8va
mf mp

* speed can match the slowest member (i.e. Flute harmonics are a lot slower than for e.g. cello)

7

Sop. *mp*
mm-woh-ah - (ee) - ah-oh - mm - wah - mm

B. Fl. *p* *mf* *mp* *p*
jet whistle

Vcl. *mf* *mp* *mf* *mp*
pizz. arco II pizz. arco

9

Sop. *mp*
mm - woh - ah - (ee) - ah - oh - mm - wah - mm

B. Fl. *mf* *mp*
jet whistle played multiphonic

Vcl. *mf* *mp*
pizz. arco II pizz. arco

10

Sop. *mp*
mm-woh-ah - (ee) - ah-oh-mm - wah - mm

B. Fl. *p* *mf* *mp* *p*
jet whistle

Vcl. *mf* *mp* *mf* *mp*
pizz. I arco I pizz. arco

12

Sop. *mp*
mm - woh - ah - (ee) - ah - oh - mm - wah - mm

B. Fl. jet whistle *mf*

Vcl. *8va*

13

Sop. *pp*
wah-mm (mm)oh mm-woh - ah - (ee) - ah - oh -

(mm) = lips nearly closed

B. Fl. *p* jet whistle *mf* *pp*

Vcl. *pizz.* *mf* *sffz* *arco* *mp*

15

Sop. *pp* *pp*
(mm)oh mm-woh - ah - (ee) - ah - oh - (mm)oh mm-woh - ah - (ee) - ah - oh -

B. Fl.

Vcl.

17 *pp* *pp*

Sop. (mm)oh mm-woh - ah - (ee) - ah - oh - (mm)oh mm-woh - ah - (ee) - ah - oh -

B. Fl.

Vcl.

19 megaphone *p*

Sop. mm (ee) ww -

B. Fl. sung played

Vcl.

un poco animato

21 *sfz* flz. *p* *sfz* *p*

Sop. ah rr - ah rr -

B. Fl. sealed *p* *sfz* *p*

Vcl. *pp*

23 *sfz p* *sfz sfz* *sfz p*

Sop. ah ww - ah P ka - ta - ka (w)oh rr - -

B. Fl. *sfz p* *mp* *sfz* *sfz p* sealed flz. ka ta ka (w)oh (rr) - -

Vcl. III II I

25 *sfz* *mf* *pp* *mp* *pp*

Sop. ah uh Bff wah whistled megaphone

B. Fl. *sfz* *mf* *pp* *mp* pitched unpitched pitched

Vcl. II

27 *pp* *pp* *mpp*

Sop. *pp* *pp*

B. Fl. *pp* *pp* *mpp*

Vcl. *pp* *mpp*

29

Sop. *whistled* *pp* *megaphone sfz*

B. Fl. *3 p* *pp* *played p* *sung gliss.*

Vcl. *pizz. sfz* *arco vib. mf* *mp*

31

Sop. *sfz* *megaphone sfz p* *3* *3* *<sfz* *pp*

(w)oh-rr - ah rr - ah oh - (wah__ oh_ ka ta ka ta ka ta ka w - ah (w) -

B. Fl. *3 flz* *3* *3* *<mf sfz p* *sfz p* *<sfz* *mp* *<sfz* *pp* *mp* *pp*

Vcl. *<sfz* *tap on cello* *3 mp* *3* *pp* *<sfz* *pp* *<mp*

35

Sop. *whistled through megaphone* *mp* *p*

rr (w)

B. Fl. *mp* *air -> tone* *sfz pp* *1/4 tr* *mp* *air -> tone* *1/4 tr* *pp*

Vcl. *mp* *mp* *pp*

38 *sfz* whistled *pp* megaphone *sfz* *mp* *p*

Sop. *ff* - wah Pff rr

B. Fl. (tr) sealed *mp* Pff

Vcl. pizz. arco tap on cello *pp* *sfz* 9 *pp*

41 *mf* *p* *sfz* *pp* *mp* *mp*

Sop. (w) - ah w - ah(w) - - - ah(w) -

B. Fl. open flz. *pp* *pp*

Vcl. tap on cello *pp* *mp*

44 *mf* *sfz* *p* *sfz* *p* *sfz* *p*

Sop. - ah ta ka ta ka Pff - wah (w) P rr -

B. Fl. sealed whistle tones (unstable) flz. *sfz* *pp*

Vcl. *pp*

47 *sfz* *sfz p* *sfz mf* *mp* *sfz 3 p*

Sop. ah ka ta ka ta ka ta w - oh ka ta ka ta ka ta w - ah ka ta ka ta ka ta ka ta

B. Fl. *sfz* *mp* *sfz p* *mf* *mp*

Vcl. *mf* *p*

flz. tap on cello

49 *pp* *sfz* *pp*

Sop. w

B. Fl. *sfz* *sfz* *sfz* *pp*

Vcl. *sfz*

whistle tones (unstable)

51 *sfz* *sfz* *p*

Sop. *p!* rr - ah rr -

B. Fl. To Fl. Flute sung *mp* *mf* *gliss.*

Vcl. *mp* *mf*

played

con animato

53 *sfz* *mf*

Sop. ah

Fl. *sfz* *f* *gliss.* *f* *7:6* *ff* *tr* ^{1/4} lip gliss

Vcl. *sfz* *f* *3* *5* *ff* *mf* *mf*

55 *sfz* *p*

Sop. Pff- (ff)rr

Fl. *tr* *tr* *overblow* *sfz* *sfz* *sfz* *sfz* *<mf* *f*

Vcl. *portamento* *3* *sfz* *f* *3* *5*

57 *mf* *sfz* *p < sfz* *mf*

Sop. - (w)oh wah ka ta ka ta ka_ ta ka wah w - ah w

Fl. *sealed* *sfz* *mf* *3* *3* *mf* *+* *+* *played* *f* *sung*

Vcl. *sfz* *tap on cello* *f* *arco* *(pp)* *f*

60 *f* whistled

Sop.

Fl. *ff* *f* *ff* flz. 3 flz. tr

Vcl. *ff* *f* *ff* *f* quick vib. quick vib. quick vib. 5

62 megaphone

Sop. *sfz p* *mf mp* *f* *mf* Pff - - - wff - - - woh rr -

Fl. (tr) *sfz f* 7:4 gliss. 5:4 *sfz*

Vcl. *sfz* *f* pizz. l.v. arco 1/4 tr

64 *sfz* *mf* *sfz* *f*

Sop. ah rr - ah (w)oh - rr -

Fl. *sfz* *sfz mf* 5:4

Vcl. normale *f* *ff* *f* pizz. 3 molto sul pont.

66 *ff* *f* *ff* *fff*

Sop. ah w - ah(w) - ah(w) - ah(w) - ah(w) ah(w) - ah ta ka ta ka

Fl. *f* *ff* *fff* To B. Fl.

Vcl. arco 1/4 *ff* *fff*

68 Atem(po)

Sop.

B. Fl. Bass Flute *sfz* *p* *pp* *mp* half tone

Vcl. *pp* *pp*

71

Sop. *mp* mm - oh - ah - ee - ah - oh - mm mm - -

B. Fl. pitched *pp* *pp* *p* *mp*

Vcl. *mp* *pp* non vib. *mp* *mf* *pp* molto vib.

74

Sop. *oh - ah - ee - ah - oh - mm_____ mm_____ mm oh - ah - ee - ah - oh - mm (eh)_____*

B. Fl. *p mp gliss. 3 3 mp*

Vcl. *p mp III mf mp pizz.*

77

Sop. *mm - oh - ah - ee - ah - oh - wa - mm mm_____*

B. Fl. *1/4 mf sfz mp*

Vcl. *mf mp pizz.*

79

Sop. *mm - oh - ah - ee - ah - oh - wa - mm mm - - - mm - oh - ah - ee - ah - oh -*

B. Fl. *mf mp*

Vcl. *mf mp pizz. mf mp*

81

Sop. wa-mm mm - mm-oh - ah-ee-ah - oh-wa-mm mm -

B. Fl. *mf* *mp*

Vcl. *mf* *mp* pizz. II

83

Sop. - oh - ah-ee-ah - oh-mm

B. Fl.

Vcl. 8va

84

Sop. oh - ah-ee-ah - oh-mm wah-mm oo - ee - oo

B. Fl. *p*

Vcl. III *p* *pp*

87 megaphone *p* *sfz* *p* *mf* *p* *mf* *p*

Sop. w P ff - - weh ff - wah ff -

B. Fl. *mf* *pp* *pp* *mp* *sfz* *p* *sfz*

Vcl.

90 *sfz* *p* *sfz* whistled *pp* *pp*

Sop. wah Pff (w) - ah mm - oh -

B. Fl. *pp* *mp* *pp*

Vcl. *mp* *pp*

93 *mp* megaphone *pp* *pp* *pp* *pp*

Sop. (ce) w w w

B. Fl. *mp* *pp* *mf* *ppp* whistle tones

Vcl. *mp* *pp*

97

Sop. *pp*

B. Fl.

Vcl. *ppp* *pppp*

The image shows a musical score for three instruments: Soprano (Sop.), Bass Flute (B. Fl.), and Violoncello (Vcl.). The score is for measures 97-100. The Soprano part is in treble clef and has a dynamic marking of *pp* (pianissimo) starting in measure 98. A slur covers measures 98 and 99, with a 'w' marking below it. The Bass Flute part is also in treble clef and has a slur covering measures 98 and 99. The Violoncello part is in bass clef and has a dynamic marking of *ppp* (pianississimo) starting in measure 98, which changes to *pppp* (pianissimissimo) in measure 99. A slur covers measures 98 and 99. The score ends with a double bar line at the end of measure 100.