

Making Love / Making Work
The Sculpture Practice of Sarah Bernhardt

Volume III

Miranda Eve Mason

Submitted in accordance with the requirements of the degree of Doctor of Philosophy

The University of Leeds, School of Fine Art, History of Art and Cultural Studies

May 2007

The candidate confirms that the work submitted is her own and that appropriate credit has been given where reference has been made to the work of others.

This copy has been supplied on the understanding that it is copyright material and that no quotation from the thesis may be published without proper acknowledgement.

Figures

1: 1-4 Sarah Bernhardt, *Bust of Louise Abbéma*, 1878, marble, 54 x 22 x 22 cm. Musée d'Orsay, Paris. Photo: © Miranda Mason

1: 5 Henri Demare, 'Sarah Bernhardt: Quelques chapitres de sa vie', 1883, unidentified print medium, 48.5 x 39.5 cm. Reproduced in *Le Grelot* (18 February 1883). BNFDAS

1: 6 Benque & Cie, Portrait of Louise Abbéma, c. 1876-79, carte victoria woodburytype photographic portrait print [reproduced by Goupil as photoglyptie], 12.2 x 8.4 cm. Musée d'Orsay, Paris and BNFDEP

1: 7 Ferdinand Mulnier, Portrait of Louise Abbéma, c. 1880-81, carte album photographic portrait print on albumenized paper from a collodion glass negative, mounted on card, 16.6 x 10.8 cm. Musée d'Etampes. Photo: © Miranda Mason

1: 8 Caran d'Ache and Manuel Luque, 1887, 'Abbéma (Mlle Louise) – Mme Sarah Bernhardt', reproduced drawing, 9.4 x 8.3 cm. Reproduced in *Peintres et Chevalets* (Paris: Vanier, 1887). Original drawing not located. Source: photocopy in MOSD dossier Abbéma

1: 9 Jean Saurel, (dit Jehan Testevuide), Caricature of Louise Abbéma, n. d., black ink drawing on paper stuck into Abbéma's sketchbook, 4.3 x 4.5 cm. Musée d'Etampes. Photo: © Miranda Mason

1: 10 Victor Rousseau, *Le Secret*, 1917, marble statuette, 49 x 31 x 18 cm. Royal Museums of Fine Arts of Belgium, Brussels.

1: 11 Ary Bitter, *Les Deux amies*, c. 1910-30, terracotta statuette, length 54 cm. Private collection, not located

1: 12 Jean-Léon Gérôme, *Bust of Sarah Bernhardt*, 1895-97, painted marble, 67.7 x 41 x 29 cm; in right background Ernest-Louis Barrias, *Bust of Georges Clairin*, 1875, terracotta, 48 x 23 x 27 cm. Musée d'Orsay, Paris. Photo: © Miranda Mason

1: 13-14 Hervé Lewandowski, Sarah Bernhardt's Bust of Louise Abbéma, after 1996, photographic print. Photo: RMN

1: 15 Anon., 'Buste de Louise Abbéma par Sarah Bernhardt', 1978, reproduced photograph, 9.9 x 7.3 cm. Reproduced in sale catalogue at Drouot Rive Gauche, Paris, 21 March 1978

1: 16 Sarah Bernhardt, *Bust of Louise Abbéma*, 1878, marble, 54 x 22 x 22 cm. Musée d'Orsay, Paris. Photo: © Miranda Mason

1: 17 Sarah Bernhardt, *Bust of Louise Abbéma*, 1878, marble, 54 x 22 x 22 cm. Musée d'Orsay, Paris. Photo: © Miranda Mason

- 1: 18a-s Sarah Bernhardt, *Bust of Louise Abbéma* [details], 1878, marble, 54 x 22 x 22 cm. Musée d'Orsay, Paris. Photo: © Miranda Mason
- 1: 19 Anon., 'Auguste Rodin retouchant le buste de Madame Simpson', 1903, photograph, 8.9 x 9.6 cm. Musée Rodin, Paris
- 1: 20 Anon., 'Atelier de praticiens travaillant pour différents sculpteurs', c. 1893, citrate print photograph, 17 x 23.4 cm. Musée Rodin, Paris
- 1: 21 Louise Abbéma, 'Portrait de Mlle. L. Abbéma d'après Sarah Bernhardt', 1879, reproduced drawing, 8.6 x 4.4 cm. Reproduced in Georges Lecocq, *Louise Abbéma* (1879) and *L'Art* (1879)
- 1: 22 Louise Abbéma, Sarah Bernhardt working on a portrait bust in the studio at 11 boulevard de Clichy, 1875, oil on board, 25 x 15.3 cm. Private collection, Paris. Photo: © Miranda Mason
- 1: 23 Louise Abbéma, Sarah Bernhardt working on a portrait bust in the studio at 11 boulevard de Clichy [detail], 1875, oil on board, 25 x 15.3 cm. Private collection, Paris. Photo: © Miranda Mason
- 1: 24 Louise Abbéma, Sarah Bernhardt working on a portrait bust in the studio at 11 boulevard de Clichy [detail], 1875, oil on board, 25 x 15.3 cm. Private collection, Paris. Photo: © Miranda Mason
- 1: 25 Sarah Bernhardt, Portrait of Louise Abbéma, 1875, bronze medallion, 21.5 x 18.1 x 3.8 cm. Museum of Fine Arts, Boston
- 1: 26 Boissonas et Taponnier 'Mademoiselle Louise Abbéma', c. 1876-79, reproduced photograph, dimensions not known. Source of reproduction not identified. BNFDEP
- 1: 27 Atelier Nadar, Portrait of Louise Abbéma, c. 1877, photographic print from original collodion glass negative for carte album photograph, 14.2 x 10 cm. BNFDEP
- 1: 28 Atelier Nadar, Portrait of Louise Abbéma, c. 1877, photographic print from original collodion glass negative for carte album photograph, 14.2 x 10 cm. BNFDEP
- 1: 29 Atelier Nadar, c. 1877, Portrait of Louise Abbéma, photographic print from original collodion glass negative for carte album photograph, 14.2 x 10 cm. BNFDEP
- 1: 30 Louise Abbéma, Self-portrait, 1876, oil on canvas, 36 x 25 cm. Private collection, not located (for sale: Binoche, Paris, 23 May 2000 and Anaf, Lyon, 4 February 2001)
- 1: 31 Louise Abbéma, Self-portrait, c. late 1870s, drawing, dimensions not known. Source of reproduction not identified. Source: MOSD dossier Abbéma

- 1: 32 Atelier Nadar, Portrait of Louise Abbéma, , c. 1877, photographic print from original collodion glass negative for carte album photograph, 14.2 x 10 cm. BNFDEP
- 1: 32 Atelier Nadar, Portrait of Louise Abbéma, , c. 1877, photographic print from original collodion glass negative for carte album photograph, 14.2 x 10 cm. BNFDEP
- 1: 33 Atelier Nadar, Portrait of Louise Abbéma, c. 1877, photographic print from original collodion glass negative for carte album photograph, 14.2 x 10 cm. BNFDEP
- 1: 34 Achille Melandri, Portrait of Sarah Bernhardt with the *Bust of Louise Abbéma* in the atelier-salon at 41 avenue de Villiers, c. 1878-79, photogravure by C. Ruckert of original photographic print on albumenized paper from a collodion glass negative, 13.9 x 10 cm. Reproduced in Jules Huret, *Sarah Bernhardt* (1899) and *La Quinzaine* (c. 1904-7) [dimensions not known]
- 1: 35 Achille Melandri, 'Collage images Sarah Bernhardt' with portrait of Sarah Bernhardt with the *Bust of Louise Abbéma* [top right] in the atelier-salon at 41 avenue de Villiers, c. 1878-79, photo-aquarelle for a carte album [photograph of original montage of photographic prints on albumenized paper from collodion glass negatives and watercolour], mounted on card, 16.5 x 10.9; photoaquarelle only: 13.9 x 10.1 cm. BNFEDAS
- 1: 36 Pierre-Jean Poitevin, Louise Abbéma in her studio, 1927, drawing, medium not known. Possibly for reproduction in unidentified source. Private collection, not located
- 2: 1 Achille Melandri, 'Sarah Bernhardt dans son cercueil', c. 1878-79, portrait of Sarah Bernhardt in a coffin with the *Bust of Louise Abbéma* in the atelier-salon at 41 avenue de Villiers [head turned towards bust], carte album photographic portrait print on albumenized paper from a collodion glass negative, mounted on card: with mount 16.6 x 10.7 cm; photo only 14.4 x 9.9 cm. BNFDEP
- 2: 2 Achille Melandri, 'Sarah Bernhardt dans son cercueil', c. 1878-79, portrait of Sarah Bernhardt in a coffin with the *Bust of Louise Abbéma* in the atelier-salon at 41 avenue de Villiers [another bust in cloche visible on the left], reproduced photograph of original carte album photographic portrait print on albumenized paper from a collodion glass negative, 14.7 x 10.1 cm. Original photograph not located. Reproduced in Sarah Bernhardt, *My Double Life* (1907)
- 2: 3 Marie-Désiré Bourgoïn (1839-1912), Sarah Bernhardt with the model for or a reduced version of *Après la Tempête* in the atelier-salon at 41 avenue de Villiers, 1879, watercolour on unidentified backing, 76 x 64 cm. Collection of Lady Jane Abdy, London
- 2: 4 Marie-Désiré Bourgoïn (1839-1912), Atelier-salon at 41 avenue de Villiers with painting equipment, watercolour and gouache over graphite on paper, 67.8 x 53.1 cm. Metropolitan Museum of Art, New York

2: 5 Félix Lucas, 'Un coin de l'atelier de sculpture' or 'L'Atelier de sculpture de Mlle. Sarah Bernhardt', 1881, reproduced wood engraving of original black ink drawing, 22.5 x 22.2 cm. Original drawing and engraving not located. Reproduced in *La Vie moderne* (28 May 1881)

2: 6 Toussaint, 'Hôtel de Mlle Sarah Bernhardt', 1877, reproduced engraving by Yves et Barret of black ink drawing, dimensions not known. Original drawing and engraving not located. Reproduced in *La Semaine des constructeurs* (September 1877)

2: 7 Marie-Désiré Bourgoïn, (1839-1912), *L'atelier de sculpture de Sarah Bernhardt*, 1877, watercolour, 26 x 35.5 cm. Musée de la Vie romantique, Paris. Photo: © Miranda Mason

2: 8 Louise Abbéma, *Le Déjeuner dans la Serre*, 1877, oil on canvas, 194 x 308 cm. Musée des beaux-arts de Pau. Photo: © Miranda Mason

2: 9 Louise Abbéma, Sketch for *Le Déjeuner dans la Serre*, 1876, oil on canvas, 55 x 80 cm. Private collection, not located

2: 10 Anon., Group in the conservatory at avenue de Villiers [clockwise from middle left: Sarah Bernhardt; Georges Clairin; Mme Guérard; Louise Abbéma's mother, Henriette Anne Sophie Léonie Abbéma [née D'Astoin]; Louise Abbéma; Louise Abbéma's father, Émile Abbéma), c. 1877, reproduced photographic print, 7.4 x 6.5 cm. Original photograph not located. Reproduced in *L'Art du théâtre* (1905) and *Le Théâtre et commoedia illustré* (June 1923) [as 'Une réunion intime dans l'Atelier de Sarah Bernhardt']

2: 11 Anon., Group in the conservatory at avenue de Villiers [Sarah Bernhardt, Émile Abbéma, Louise Abbéma, Mme Guérard, Georges Clairin], c. 1877, carte album photographic portrait print on albumenized paper from a collodion glass negative mounted on card, 16.5 x 10.8 cm. Laurence Senelick Collection of Theatrical Imagery, West Medford, MA

2: 12 Anon., Bernhardt and Abbéma as Pasha and Odalisque in the conservatory at avenue de Villiers, c. 1877, carte album photographic portrait print on albumenized paper from a collodion glass negative mounted on card, 16.4 x 12.1 cm. BNFEDAS

2: 13 Achille Melandri, Sarah Bernhardt at avenue de Villiers with a self-portrait bust [modeling tool in front of thigh], c. 1878-79, carte album photographic portrait print on albumenized paper from a collodion glass negative mounted on card. 16.5 x 11.4 cm. Houghton Theatre Collection, Harvard University, Cambridge, MA

2: 14 Achille Melandri, Sarah Bernhardt at avenue de Villiers with self-portrait bust [modeling tool between thighs], c. 1878-79, modern photographic print from an original collodion glass negative, no dimensions. BNFDEP

- 2: 15 Achille Melandri, Sarah Bernhardt at avenue de Villiers with self-portrait bust [modeling tool between thighs], c. 1878-79m, reproduced as Woodburytype photograph, 11.7 x 8 cm. Reproduced in *The Theatre* (1 July 1879)
- 2: 16 Achille Melandri, Sarah Bernhardt in her sculpture studio with *Médée*, c. 1878-79, reproduced photogravure of original carte album photographic portrait print on albumenized paper from a collodion glass negative, 15.2 x 10.1 cm. Reproduced in *My Double Life* (1907)
- 2: 17 Achille Melandri, Sarah Bernhardt at avenue de Villiers with *La Marchande des palmes*, c. 1878-79, reproduced photogravure of original carte album photographic portrait print on albumenized paper from a collodion glass negative, 13.9 x 10 cm. Reproduced in *Strand Magazine* (1904); *Ma Double vie* (1907); *Illustrated London News* (1907)
- 2: 18 Ernest de Liphart, Atelier-salon at avenue de Villiers, c. 1876-86, wood engraving of original black ink drawing, dimensions not known. Original drawing and engraving not located. Source of reproduction not identified. Source: copy in archive of the Comédie-Française
- 2: 19 Félix Lucas, 'L'atelier de peinture de Sarah Bernhardt' or 'Un coin de l'atelier', 1881, wood engraving of original black ink drawing, 27 x 22.2 cm. Original drawing and engraving not located. Reproduced in *La Vie moderne* (28 May 1881)
- 2: 20 Anon., 'L'Atelier de sculpture de Sarah Bernhardt' [boulevard Pereire], 1900, reproduced photographic print, 10.9 x 8.9 cm. Original photograph not located. Reproduced in *La Plume* (September 1900)
- 2: 21 Anon., 'Médée (statue), par Sarah Bernhardt' [sculpture studio at boulevard Pereire], 1900, reproduced photographic print, 12.9 x 8.9 cm. Original photograph not located. Reproduced in *La Plume* (September 1900)
- 2: 22 Anon., 'Figures décoratives d'un buste par Sarah Bernhardt' [sculpture studio at boulevard Pereire], 1900, reproduced photographic print, 9.1 x 6.5 cm. Original photograph not located. Reproduced in *La Plume* (September 1900)
- 2: 23 Anon., 'L'atelier de Sarah Bernhardt' [sculpture studio at boulevard Pereire], 1900, reproduced photographic print, dimensions not known. Original photograph not located. Reproduced in *Le Monde illustré* (7 April 1923)
- 2: 24 Rober, 'Un coin de l'atelier de sculpture de Mme Sarah Bernhardt' [boulevard Pereire], c. 1923, reproduced photographic print, 8.1 x 6.5 cm. Original photograph not located. Reproduced in *La Théâtre et comoedia illustré* (June 1923)
- 2: 25 H. Baude, 'Atelier de Sarah Bernhardt (midi)', 1888, engraving of original drawing, 13.7 x 17 cm. Original drawing and engraving not located. Reproduced in *La Revue illustrée* (1888) and *Art Journal* (1888)

2: 26 [?]H. Baude, 'Atelier de Sarah Bernhardt (nord)', 1888, engraving of original drawing, 17.5 x 23 cm. Original drawing and engraving not located. Reproduced in *La Revue illustrée* (1888) and *Art Journal* (1888)

2: 27 [?]H. Baude, 'Petit salon et store japonais', 1888, engraving of original drawing, 13.3 x 10.3 cm. Original drawing and engraving not located. Reproduced in *La Revue illustrée* (1888) and *Art Journal* (1888)

2: 28 Anon., 'Vue d'ensemble (fond)', c. 1890s, reproduced photograph, dimensions not known. Original photograph not located. Reproduced in *The Home of Sarah Bernhardt in Paris* (c. 1890s)

2: 29 Anon., 'Madame Bernhardt in her studio [boulevard Pereire, with bust of girl in progress], c. 1890s, reproduced photograph, dimensions not known. Original photograph not located. Source of reproduction not known. Source: cutting in Victoria and Albert Theatre Museum, London

2: 30 Anon., 'Mme Bernhardt's drawing-room' [boulevard Pereire, with *Bust of Victorien Sardou* in progress], c. 1890s, reproduced watercolour or photograph, 9.8 x 13 cm. Original photograph or watercolour not located. Reproduced in Jules Huret, *Sarah Bernhardt* (1899)

2: 31 Anon., 'Un côté d'atelier' [boulevard Pereire, with the *Bust of Régina*], c. 1890s, reproduced photograph, dimensions not known. Original photograph not located. Reproduced in *The Home of Sarah Bernhardt in Paris* (c. 1890s)

2: 32 Anon., 'Un coin d'atelier' [boulevard Pereire, with the *Bust of Jacques Damala*], c. 1890s, reproduced photograph, dimensions not known. Original photograph not located. Reproduced in *The Home of Sarah Bernhardt in Paris* (c. 1890s)

2: 33 Anon., 'Un coin d'atelier' [boulevard Pereire, with the *Bust of a Granddaughter or Young Girl/Simone*], c. 1890s, reproduced photograph, dimensions not known. Original photograph not located. Reproduced in *The Home of Sarah Bernhardt in Paris* (c. 1890s)

2: 34 Anon., Sarah Bernhardt in her library [boulevard Pereire, with Mathieu-Meunsier's reduced marble *La Mort de Laiïs*], c. 1890s, reproduced photograph, dimensions not known. Original photograph not located. Source of reproduction not known. Reproduced in Wildenstein, *Sarah Bernhardt and her Times* (1984)

2: 35 Georges Clairin, 'Regnault et Clairin dans une maison de Nanterre, aux avant-postes, 18 January 1871', 1871, reproduced pencil drawing, 7.4 x 9.7 cm. Original drawing not located. Reproduced in Armand Dayot, *L'Invasion, le Siège, la Commune 1870-1871* (1901)

- 2: 36 [?]Lagraine, 'Le peintre Henri Regnault et Georges Clairin à l'entrée de la salle des deux sœurs à l'Alhambra de Grenade' [with Frédéric Auguste Laguillierme and Mauzaize], c. 1868, photographic print on albumenized paper from a collodion glass negative, 20. 8 x 16 cm. Musée d'Orsay, Paris
- 2: 37 Georges Clairin, 'Mounted Guardsman with self-caricature of the artist on a letter to an unknown woman', c. 1883, brown ink on off-white laid letter paper, 20. 4 x 13 cm. Private collection, not located. Source: archive of Shepherd Gallery Associates, New York
- 2: 38 Georges Clairin, *Portrait de Mlle Sarah Bernhardt, sociétaire de la Comédie-Française*, 1876, oil on canvas, 250 x 200 cm. Musée du Petit Palais, Paris
- 2: 39 Anon., 'Mlle Louise Abbéma, Le déjeuner dans le fond de l'aquarium', 1877, reproduced drawing, 6.7 x 11.3 cm. Original drawing not located. Source of reproduction not known. Source: INHA, Paris. Photo: © Miranda Mason
- 2: 40 Louise Abbéma, *Le Déjeuner dans la serre* [detail], 1877, oil on canvas, 194 x 308 cm. Musée des beaux-arts de Pau. Photo: © Miranda Mason
- 3: 1 Lagraine, Sarah Bernhardt with life-size plaster group *Après la tempête* (1876, not located), photographic print on albumenized paper from a collodion glass negative, mounted on card, with mount: 31.3 x 24.1; photograph only: 14.6 x 11.2 cm. BNFDAS
- 3: 2 Sotheby's, Reduced bronze version of *Après la tempête* (1876, height 73.7 cm. Founder not known. Private collection, not located), reproduced photograph, 14.8 x 14.6 cm in *Nineteenth- and Twentieth Century Sculpture*, Sotheby's, New York, 26 May 1994
- 3: 3 Anon., Reduced marble version of *Après la tempête* (1876, height 77 cm. Private collection, not located), reproduced photograph in unidentified publication, c. 1876, 11.7 x 8.9 cm. Original photograph not located
- 3: 4 Anon., Clay or plaster version of *Après la tempête* (1876, dimensions not known. Not located), photograph or reproduced photograph in unidentified publication, c. 1876, dimensions not known. Original photograph not located. Re-photographed for *Art nouveau, art deco* (1998) by Philippe Joffre, dimensions not known
- 3: 5 Sarah Bernhardt, '*Après la tempête* par Sarah Bernhardt', 1876, reproduced drawing, dimensions not known. Original drawing not located. Source of reproduction not identified. BNFDAS
- 3: 6 Sarah Bernhardt, *Statuette de Sarah Bernhardt* (1880, marble, height 49 cm. Private collection, not located), reproduced photograph in *La Gazette de l'hôtel Drouot* (18 May 2005) captioned 'Marbre: Sarah Bernhardt par Sarah Bernhardt elle-même' and dated 1885, 10.8 x 3.9 cm
- 3: 7 Sarah Bernhardt, *Statuette de Sarah Bernhardt* [detail]

Fig. 3:8 Camille Piton, 'Sarah Bernhardt's latest sculpture', 1880-81, reproduced drawing, dimensions not known. Original drawing not located. Reproduced as front page of *The Art Amateur: A Monthly Journal Devoted to the Cultivation of Art in the Household* (January 1881)

3: 9 Camille Piton, 'Sarah Bernhardt's latest sculpture' [detail of *Statuette of Sarah Bernhardt*]

3: 10 'Ophelia, sculpture by Sarah Bernhardt' (1880, plaster or marble bas relief, dimensions not known), reproduced photograph, 1880 or after, 10.1 x 15.1 cm, in Sarah Bernhardt, *My Double Life* (London: Heinemann, 1907). Original photograph not located

3: 11 Camille Piton, 'Sarah Bernhardt's latest sculpture' [detail of *Ophélie*]

3: 12-15 Sarah Bernhardt, *Ophélie*, 1880, marble bas relief, 70 x 60 x 8 cm. Royal Theatre, Copenhagen. Photo: © Miranda Mason

3: 16 Sarah Bernhardt, *Ophélie*, 1880, marble bas relief [detail], 70 x 60 x 8 cm. Royal Theatre, Copenhagen. Photo: © Miranda Mason

3: 17 Atelier Nadar, Portrait of Roland Mathieu-Meusnier in studio scene with *La Mort de Laïs*, medallion in progress, sculpture tools, and other objects, after 1849, photograph, dimensions not known. BNFDEP

3: 18 Anon., Portrait of Roland Mathieu-Meusnier in old age, n.d., photograph, dimensions not known. BNFDEP

3: 19 Pierre Etienne Carjat (1828-1906), Portrait of Jules Franceschi, n.d., carte de visite photographic print on albumenized paper from a glass negative, 10.5 x 6 cm. Musée d'Orsay, Paris

3: 20 Roland Mathieu-Meusnier, *Bust of Pierre Hyacinthe Azais*, 1842, marble, 80 x 50 x 41 cm. Musée national du château de Versailles. Photo: © Miranda Mason

3: 21 Roland Mathieu-Meusnier, *Bust of Pierre Hyacinthe Azais* [detail], 1842, marble, 80 x 50 x 41 cm. Musée national du château de Versailles. Photo: © Miranda Mason

3: 22 Roland Mathieu-Meusnier, *Bust of Jean-Bernard Rosier*, 1844, bronze, height 26 cm. Private collection, Béziers

3: 23-24 Roland Mathieu-Meusnier, *La Mort de Laïs*, 1850, marble, 120 x 164 x 66 cm. Jardin des Tuileries, Paris. Photo: © Miranda Mason

3: 25 Roland Mathieu-Meusnier, *Bust of Pierre Cartellier*, 1859, marble, 85 x 72 x 44 cm. Musée national du château de Versailles. Photo: © Miranda Mason

3: 26 Roland Mathieu-Meusnier, *La Mort de Laiš* (1859, reduced bronze, height 25.4 x width 33 cm. Private collection, not located. Reproduced on ewolfs.com. Original photograph not located

3: 27 Roland Mathieu-Meusnier, *La Mort de Laiš* [detail] (1859, reduced bronze). Reproduced photograph on ewolfs.com. Original photograph not located

3: 28 Roland Mathieu-Meusnier. *L'Orfèverrie*, 1867, marble, height 195 cm. Cour carrée, musée du Louvre, Paris. Photo: © Miranda Mason

3: 29 Roland Mathieu-Meusnier, Monument to Antonin Lambert Thiboust with medallion portrait and allegorical figures, *La Comédie* and *La Littérature* [or *la Renommée*], 1868, stone and marble, height 208.5 x width 146cm, diameter of medallion 40cm. Montmartre cemetery, Paris. Photo: © Miranda Mason

3: 30 Roland Mathieu-Meusnier, Monument to Antonin Lambert Thiboust [detail of medallion portrait], 1868, marble, diameter 40cm. Montmartre cemetery, Paris. Photo: © Miranda Mason

3: 31 Roland Mathieu-Meusnier, Monument to Antonin Lambert Thiboust [detail of *la Comédie*], 1868, stone, overall dimensions height 208.5 x width 146 cm. Montmartre cemetery, Paris. Photo: © Miranda Mason

3: 32 Roland Mathieu-Meusnier, Monument to Antonin Lambert Thiboust [detail of *la Littérature*], 1868, stone, overall dimensions height 208.5 x width 146 cm. Montmartre cemetery, Paris. Photo: © Miranda Mason

3: 33 Roland Mathieu-Meusnier, *Bust of Félicien David*, 1880, marble, 86 x 62 x 43 cm. Musée national du château de Versailles. Photo: © Miranda Mason

3: 34 Roland Mathieu-Meusnier, Tomb of Mathieu-Meusnier with self-portrait, n.d., bronze medallion, diameter 50 cm. Montmartre cemetery, Paris. Photo: © Miranda Mason

3: 35 Jules Franceschi, Monument to Miecislav Kamienski, 1861, bronze, 120 x 183 x 92 cm. Père-Lachaise cemetery, Paris. Photo: © Miranda Mason

3: 36 Jules Franceschi, Monument to Miecislav Kamienski [detail], 1861, bronze, 120 x 183 x 92 cm. Père-Lachaise cemetery, Paris. Photo: © Miranda Mason

3: 37 Jules Franceschi, Monument to Miecislav Kamienski [detail], 1861, bronze, 120 x 183 x 92 cm. Père-Lachaise cemetery, Paris. Photo: © Miranda Mason

3: 38 Jules Franceschi, *Le Réveil*, 1873, marble, 133 x 61 x 80 cm. Musée des beaux-arts de Nîmes. Photo: © Miranda Mason

- 4: 1 Letter from Louise Abbéma to Alice Ducasse, n.d., black ink on paper, 20cm x 30cm. Fondation Custodia (coll. F. Lugt), Institut Néerlandais, Paris
- 4: 2 Louise Abbéma, *Portrait de Sarah Bernhardt, sociétaire de la Comédie Française*, 1876, oil on canvas, 230 x 140 cm. Reproduced in French and English versions of Bernhardt's autobiography, *Ma Double vie* (1907). Not located
- 4: 3 Louise Abbéma, *Le Sommeil de Diane*, 1881, oil on board, 103.5 x 138.5 cm. Reproduced in sale catalogue of Christie's, London, 8 June 2005. Private collection, not located
- 4: 4 Louise Abbéma, *Le Sommeil de Diane* [detail], 1881, oil on board, 103.5 x 138.5 cm. Reproduced in sale catalogue of Christie's, London, 8 June 2005. Private collection, not located
- 4: 5 Louise Abbéma, *La Chanson de l'après-midi*, 1885, oil on canvas, 150.2 x 220.3 cm. Reproduced in sale catalogue of Sotheby's, New York, 24 May 1995. Private collection, not located
- 4: 6 Louise Abbéma, Sketch for *La Chanson de l'après-midi*, c. 1884-85, oil on board, 35.5 x 43 cm. Reproduced in sale catalogue of Piasa, Paris, 13 December 2002 [incorrectly titled: 'Soirée chez Sarah Bernhardt']. Private collection, not located
- 4: 7 Louise Abbéma, Scene of her studio at rue Lafitte, c. 1884-85, oil on canvas, 50 x 64 cm. Private collection, not located. Source: invitation card in MOSD dossier Abbéma
- 4: 8 Léo de Leymarie, Louise Abbéma's mother in an unidentified room at rue Lafitte, 1884, carte album photographic portrait print on albumenized paper from a collodion glass negative, 16.8 x 11.7 cm. INHA, Paris
- 4: 9 Léo de Leymarie, Louise Abbéma's father in her studio at rue Lafitte, 1884, carte album photographic portrait print on albumenized paper from a collodion glass negative, 17 x 11.9 cm. INHA, Paris
- 4: 10 Léo de Leymarie, Louise Abbéma with her dog in her studio at rue Lafitte, 1884, carte album photographic portrait print on albumenized paper from a collodion glass negative, 16.9 x 12.2 cm. INHA, Paris
- 4: 11 Louise Abbéma, four watercolours of an unidentified woman and Anon., photograph of Louise Abbéma at the piano in her studio at rue Lafitte, n.d., 41 x 22.7 cm (with frame). Musée de la Vie romantique, Paris
- 4: 12 Louise Abbéma, 'Silhouette de femme' [possible preparatory drawing for *Portrait de Sarah Bernhardt*], c. 1871-76, pencil on paper, 14.2 x 8.8 cm. National Museum of Art, Bucharest

4: 13 Louise Abbéma, Portrait of Sarah Bernhardt, c. 1876, reproduced watercolour, dimensions not known. Source of reproduction not identified. Not located

4: 14 Louise Abbéma, Portrait of Sarah Bernhardt, c. 1876, reproduced drawing, dimensions not known. Source of reproduction not identified. BNFDEP

4: 15 Zag, 'No. 1. La première au catalogue des immémorables SARAH BERNHARDT du Salon: celle-ci par Mlle Abbéma', 1876, reproduced drawing, 20.2 x 13.5 cm. Reproduced in *Zigzags à la plume à travers l'art* (14 May 1876). BNF

4: 16 Anon., 'Mlle Sarah Bernhardt. Encore!', reproduced cartoon drawing, 10.8 x 4 cm. Source of reproduction not identified. INHA, Paris

4: 17 Louise Abbéma, *L'Amazone*, 1880, oil on canvas, 229 x 137 cm. Schlossmuseum, Gotha

4: 18 Louise Abbéma, Sarah Bernhardt nude, n.d., pastel on paper for a fan, dimensions not known. [?]Severin Wunderman Museum, Irvine, CA

Notes on the Illustrations

The name of an artist, photographer, or illustrator for each work reproduced here has, as far as possible, been tested against a number of archival sources and only then included. I use the designation 'Anon.' for existing reproduced material where the photographer/s or graphic artist/s responsible were not identified, bearing in mind that this term does not sufficiently convey the conditions of production in publishing, nor the possibility that such information might be possible, with further research, to establish. This is also the case with private images, and on one occasion I have made a viable suggestion as to authorship (fig. 2: 36).

Titles of artworks, photographs and graphic illustrations are given in italics only when this is the title designated at the time first produced, reproduced, or exhibited. They are all retained in French with the exception of portrait busts. These I re-title in English as *Bust of* ... providing the full name of the sitter. Titles in roman with quotation marks have been copied from description in contemporary literature. If either are lacking, I provide my own description in roman without quotation marks. I do not use titles given in posthumous literature as these are often inadequate or inaccurate.

Where I have not photographed an artwork or illustration, nor purchased a reproduction from the institution to which either belongs, I provide a copy of an existing reproduction from another source. These are often the only means of access to artworks or illustrative material otherwise unavailable for study (for example, Abbéma's *Le Sommeil de Diane*, 1881; fig. 4: 3). Important locations, such as the interiors of Bernhardt's studios, are only accessible from artworks and reproductions because none of her studios have been preserved or reconstituted (as museums). When using this material, I provide as much information as possible on the date, type, and source of the images *as reproductions*. These are subjected to detailed scrutiny in order to test an existing description or provide one anew and to provide information about the physical image itself (medium, format, dimensions). All conclusions drawn can only ever be framed as 'almost definitely', 'very likely', 'probable', or 'possible'. For instance, *Après la tempête* as represented in figure 3: 1 is 'almost definitely' the life-size plaster exhibited at the Salon in 1876 and the dimensions I provide (estimated from the photograph) are 'probable'.

Sometimes the quality of an image or the information I am able to provide on it is very poor because of how material exists in the archive. Archives on Bernhardt often contain donated scrapbooks of periodical cuttings. The source of publication and date are often missing (fig. 2: 39). Such items can only be dated and their contents assessed approximately by scrutinizing elements within the image, font type of captions, etc. It would be a hard task to chase up every image that I have come across out of its original context and I have therefore also relied on those who compile archives, such as the team at the documentation service of the musée d'Orsay. Although an original photograph or drawing for reproduction may not yet have been 'found', I nonetheless refer to its existence, and current absence, designating it 'not located'.

I also use this phrase with artworks that are not in an identified public or private collection, and yet there is no record that they have been destroyed. Where a work has been sold at auction but its buyer not disclosed (even after enquiry), I note this as belonging to a 'private collection, not located'. As with the missing archival material, this

takes the onus of absence away from the object, requiring that the desiring scholar go out and look for it.

1 Making Love: Sarah Bernhardt's *Bust of Louise Abbéma*
(1878), an Erotics of Beauty in Nineteenth-Century French
Portrait Sculpture



Fig. 1: Sarah Bernhardt, *Bust of Louise Abbéma*, 1878, marble, 54 x 22 x 22 cm. Musée d'Orsay, Paris. Photo: © Miranda Mason



Fig. 1: Sarah Bernhardt, *Bust of Louise Abbéma*, 1878, marble, 54 x 22 x 22 cm. Musée d'Orsay, Paris. Photo: © Miranda Mason



Fig. 1: Sarah Bernhardt, *Bust of Louise Abbéma*, 1878, marble, 54 x 22 x 22 cm. Musée d'Orsay, Paris. Photo: © Miranda Mason



Fig. 1: Sarah Bernhardt, *Bust of Louise Abbéma*, 1878, marble, 54 x 22 x 22 cm. Musée d'Orsay, Paris. Photo: © Miranda Mason

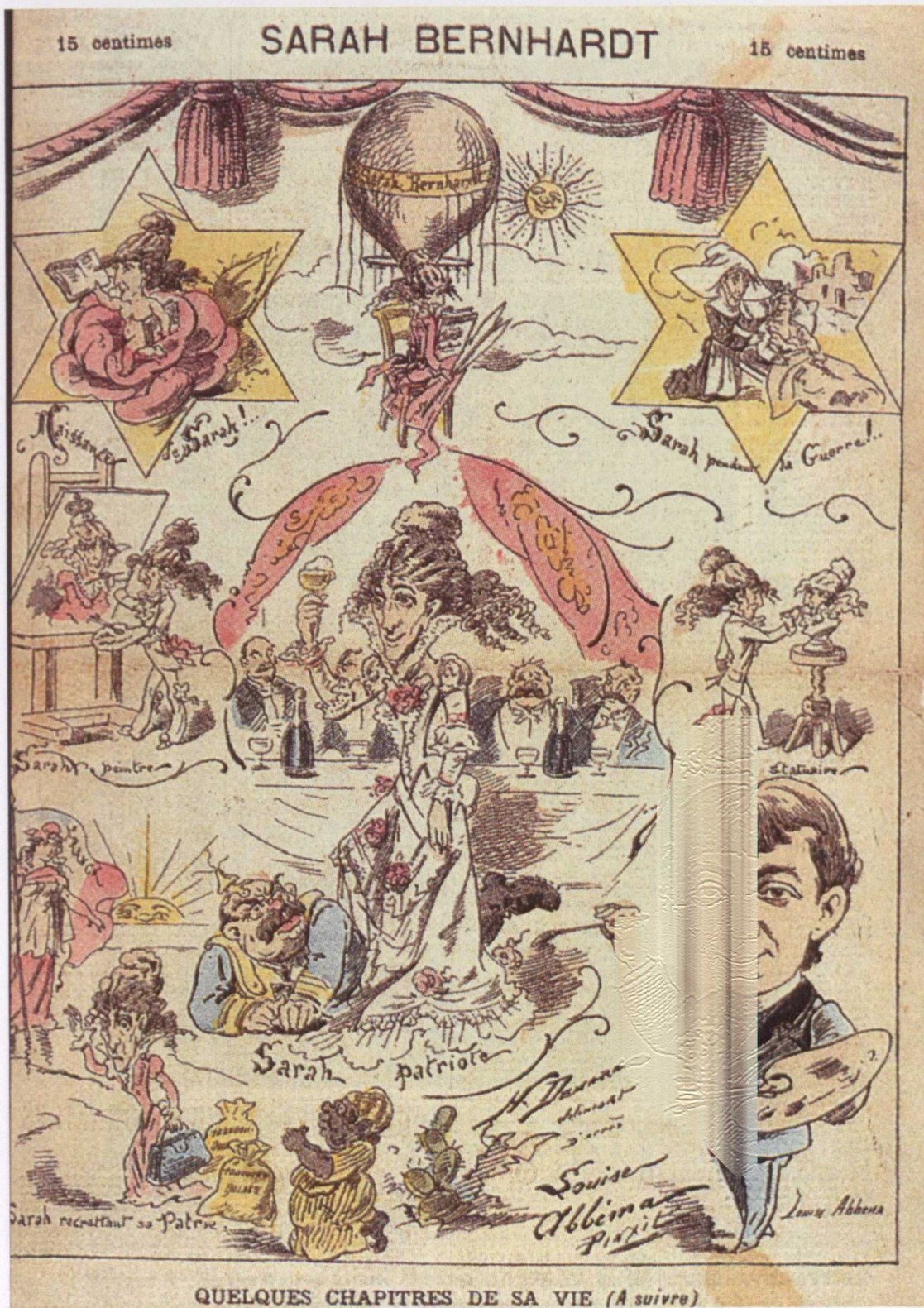


Fig. 1: 5 Henri Demare, 'Sarah Bernhardt: quelques chapitres de sa vie', 1883, unidentified print medium, 48.5 x 39.5 cm. Reproduced in *Le Grelot* (18 February 1883). BNF DAS

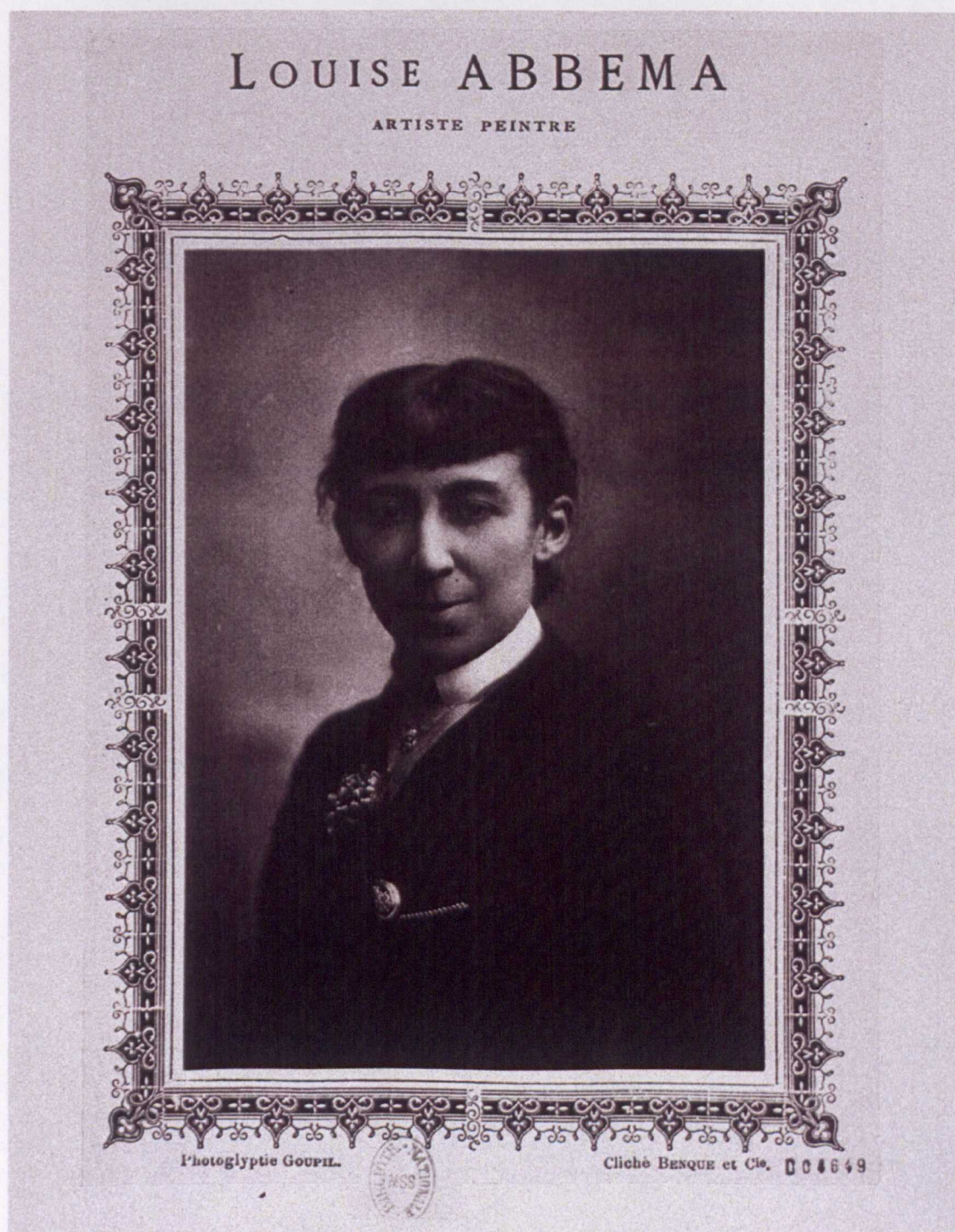


Fig. 1: 6 Benque & Cie, Portrait of Louise Abbéma, c. 1876-79, carte victoria woodburytype photographic portrait print [reproduced by Goupil as photoglyptie], 12.2 x 8.4 cm. Musée d'Orsay, Paris and BNFDEP



Fig. 1: 7 Ferdinand Mulnier, Portrait of Louise Abbéma, c. 1880-81, carte album photographic portrait print on albumenized paper from a collodion glass negative, mounted on card, 16.6 x 10.8 cm. Musée d'Etampes. Photo: © Miranda Mason



Fig. 1: 8 Caran d'Ache and Manuel Luque, 1887, 'Abbéma (Mlle Louise) – Mme Sarah Bernhardt', reproduced drawing, 9.4 x 8.3 cm. Reproduced in *Peintres et Chevalets* (Paris: Vanier, 1887). Original drawing not located. Source: photocopy in MOSD dossier Abbéma



Fig. 1: 9 Jean Saurel, (dit Jehan Testevuide), Caricature of Louise Abbéma, n. d., black ink drawing on paper stuck into Abbéma's sketchbook, 4.3 x 4.5 cm. Musée d'Étampes. Photo: © Miranda Mason



Fig. 1: 10 Victor Rousseau, *Le Secret*, 1917, marble statuette, 49 x 31 x 18 cm. Royal Museums of Fine Arts of Belgium, Brussels.



Fig. 1: 11 Ary Bitter, *Les Deux amies*, c. 1910-30, terracotta statuette, length 54 cm. Private collection, not located



Fig. 1: 12 Jean-Léon Gérôme, *Bust of Sarah Bernhardt*, 1895-97, painted marble, 67.7 x 41 x 29 cm; in right background Ernest-Louis Barrias, *Bust of Georges Clairin*, 1875, terracotta, 48 x 23 x 27 cm. Musée d'Orsay, Paris. Photo: © Miranda Mason



Fig. 1: 13 Hervé Lewandowski, Sarah Bernhardt's Bust of Louise Abbéma, after 1996, photographic print. Photo: RMN



Fig. 1: 14 Hervé Lewandowski, Sarah Bernhardt's Bust of Louise Abbéma, after 1996, photographic print. Photo: RMN



Fig. 1: 15 Anon., 'Buste de Louise Abbéma par Sarah Bernhardt', 1978, reproduced photograph, 9.9 x 7.3 cm. Reproduced in sale catalogue at Drouot Rive Gauche, Paris, 21 March 1978



Fig. 1: 16 Sarah Bernhardt, *Bust of Louise Abbéma*, 1878, marble, 54 x 22 x 22 cm. Musée d'Orsay, Paris. Photo: © Miranda Mason



Fig. 1: 17 Sarah Bernhardt, *Bust of Louise Abbéma*, 1878, marble, 54 x 22 x 22 cm. Musée d'Orsay, Paris. Photo: © Miranda Mason



Fig. 1: 18(a,b) Sarah Bernhardt, *Bust of Louise Abbéma* [detail], 1878, marble, 54 x 22 x 22 cm. Musée d'Orsay, Paris. Photo: © Miranda Mason

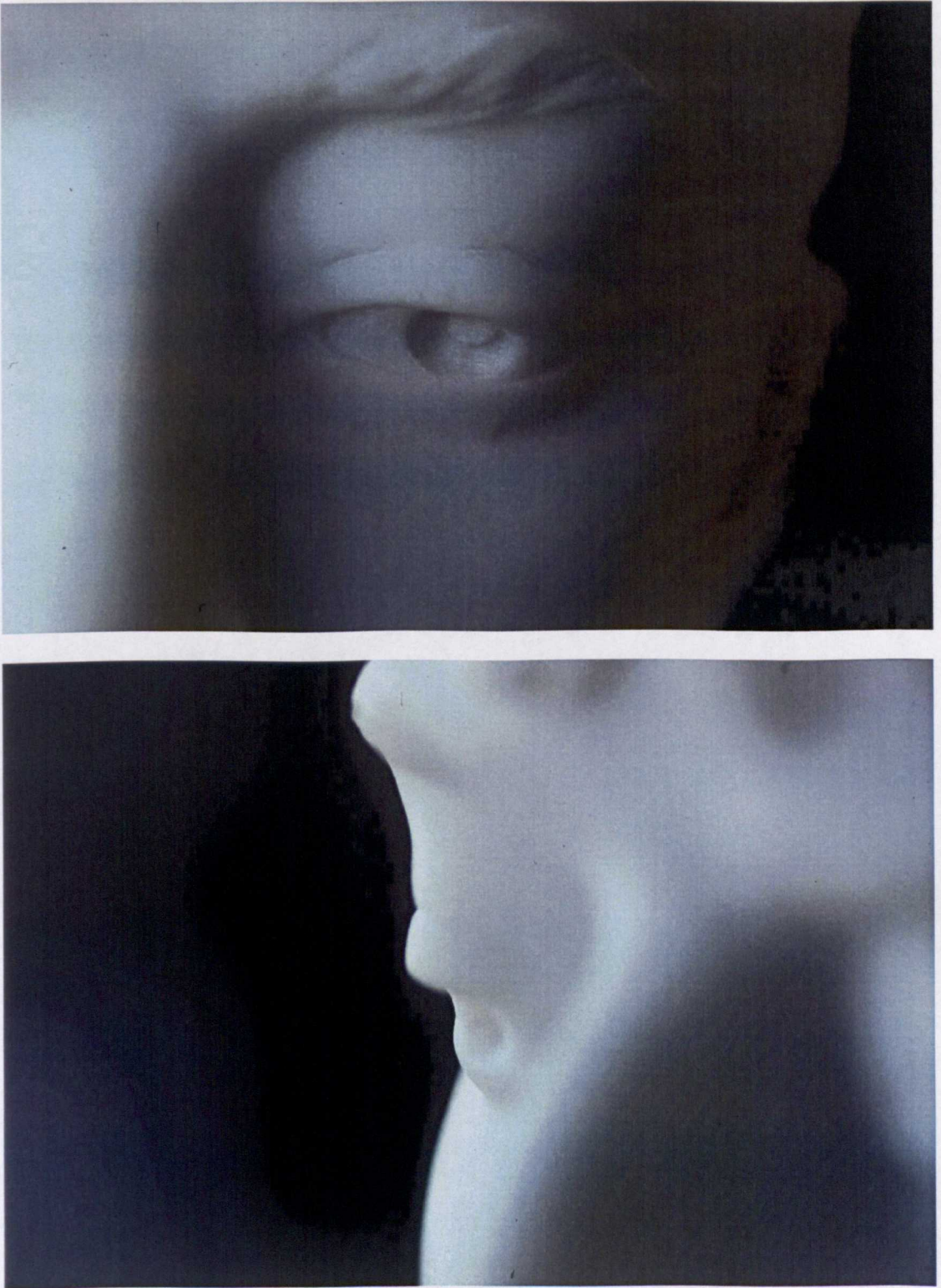


Fig. 1: 18(c,d) Sarah Bernhardt, *Bust of Louise Abbéma* [detail], 1878, marble, 54 x 22 x 22 cm. Musée d'Orsay, Paris. Photo: © Miranda Mason



Fig. 1: 18(e,f) Sarah Bernhardt, *Bust of Louise Abbéma* [detail], 1878, marble, 54 x 22 x 22 cm. Musée d'Orsay, Paris. Photo: © Miranda Mason



Fig. 1: 18(g) Sarah Bernhardt, *Bust of Louise Abbéma* [detail], 1878, marble, 54 x 22 x 22 cm. Musée d'Orsay, Paris. Photo: © Miranda Mason



Fig. 1: 18(h) Sarah Bernhardt, *Bust of Louise Abbéma* [detail], 1878, marble, 54 x 22 x 22 cm. Musée d'Orsay, Paris. Photo: © Miranda Mason

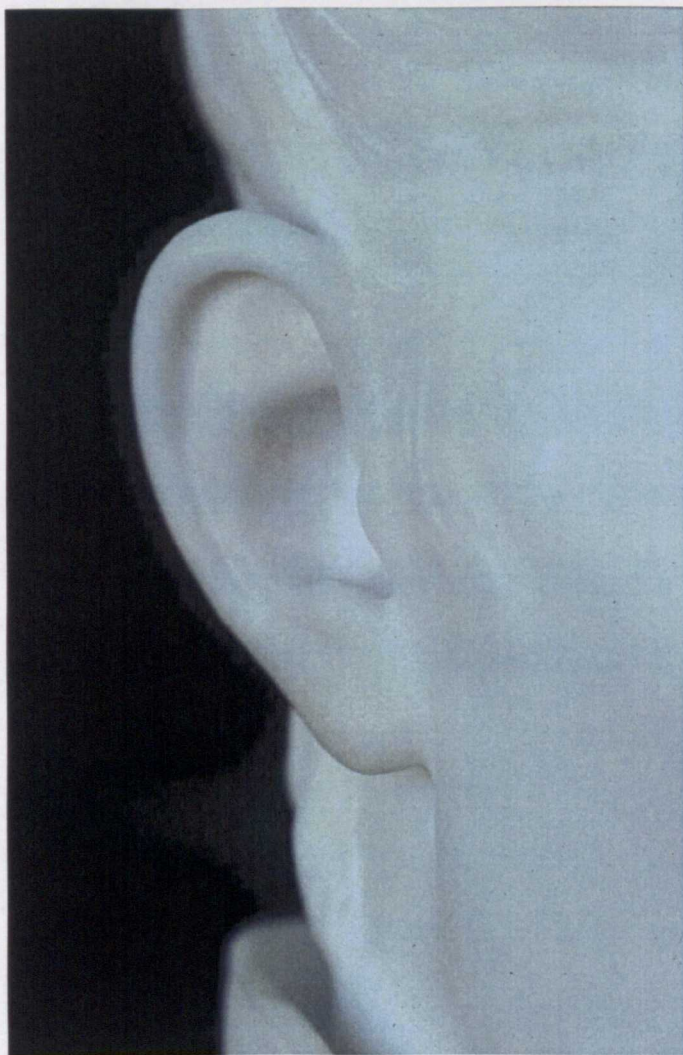


Fig. 1: 18(i,j) Sarah Bernhardt, *Bust of Louise Abbéma* [detail], marble, 54 x 22 x 22 cm. Musée d'Orsay, Paris. Photo: © Miranda Mason



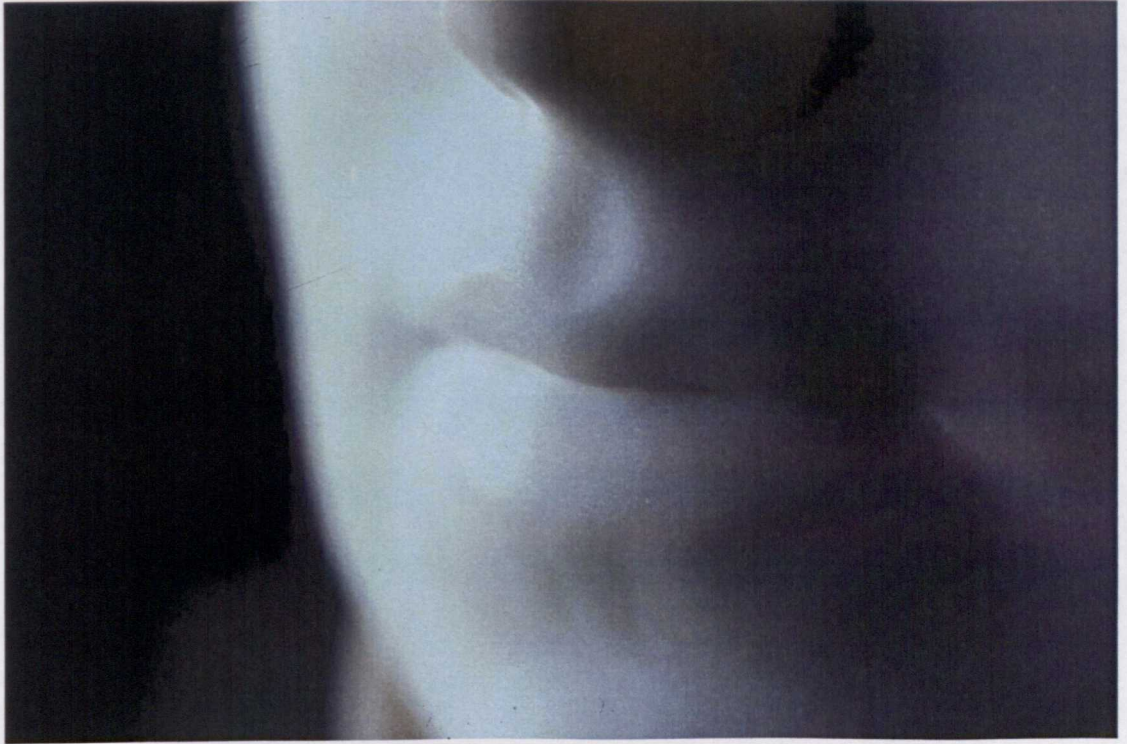


Fig. 1: 18(k,l) Sarah Bernhardt, *Bust of Louise Abbéma* [detail], 1878, marble, 54 x 22 x 22 cm. Musée d'Orsay, Paris. Photo: © Miranda Mason

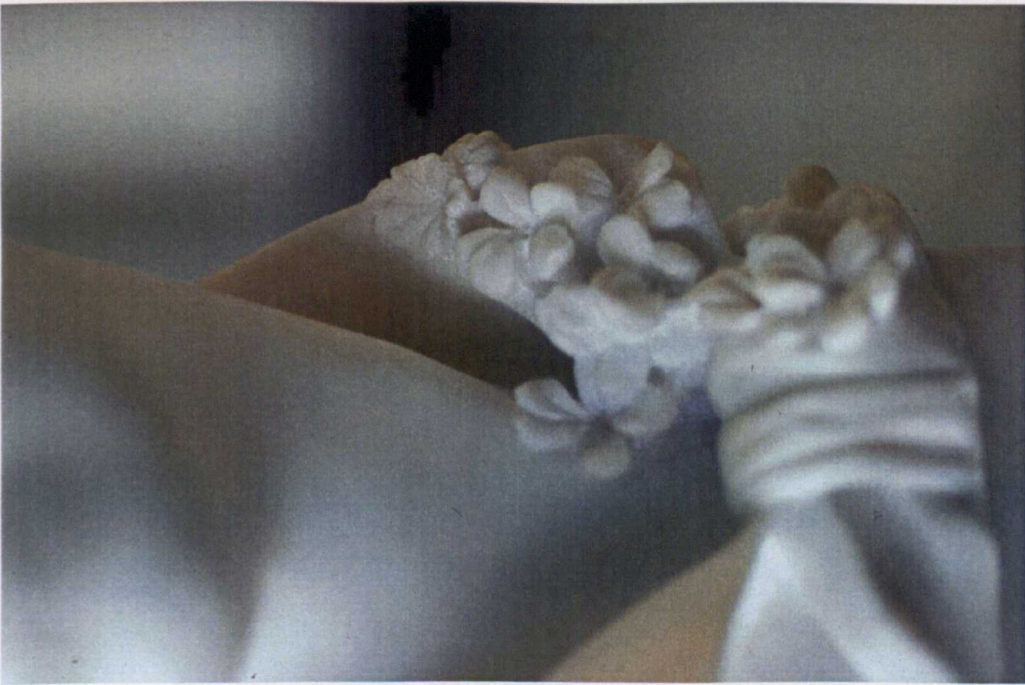
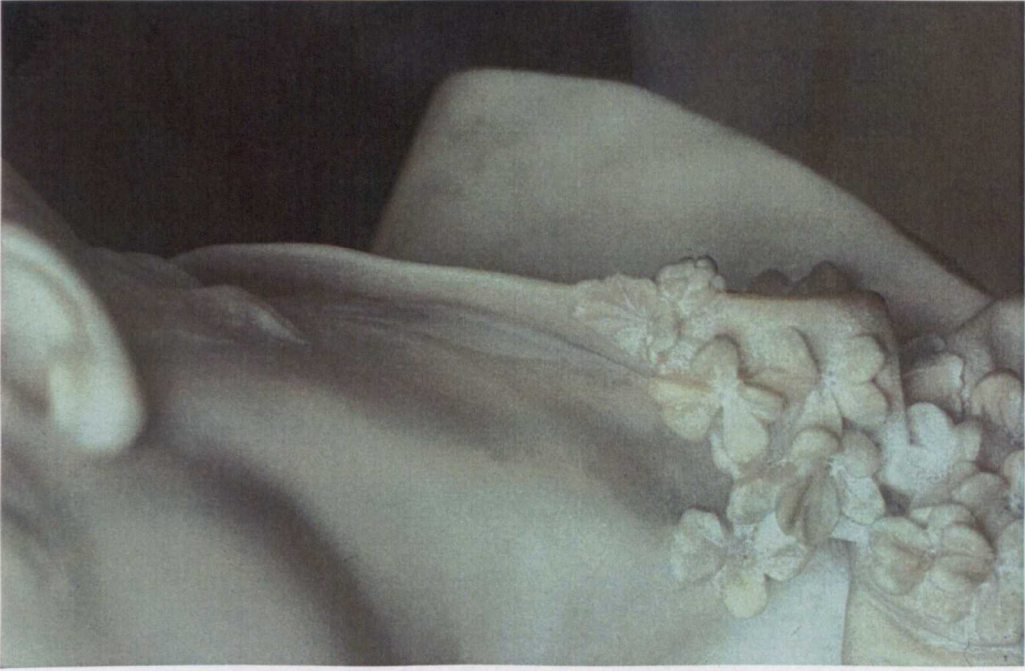


Fig. 1: 18(m,n) Sarah Bernhardt, *Bust of Louise Abbéma* [detail], 1878, marble, 54 x 22 x 22 cm. Musée d'Orsay, Paris. Photo: © Miranda Mason



Fig. 1: 18(o,p) Sarah Bernhardt, *Bust of Louise Abbéma* [detail], 1878, marble, 54 x 22 x 22 cm. Musée d'Orsay, Paris. Photo: © Miranda Mason

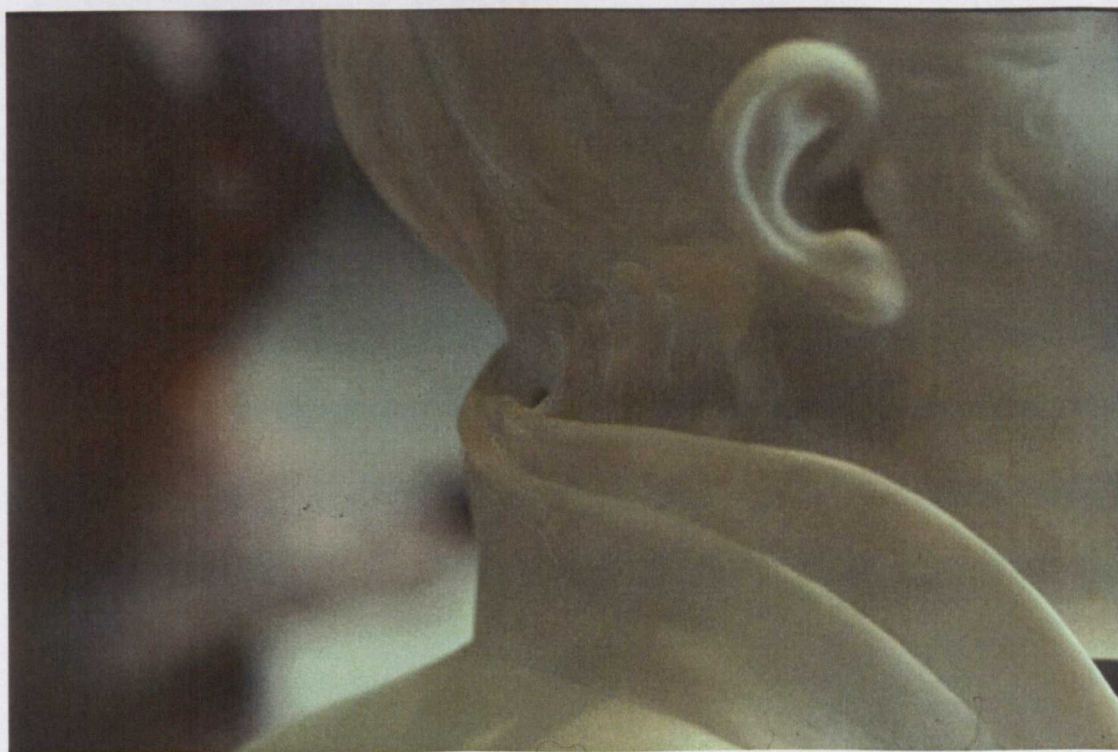


Fig. 1: 18(q,r) Sarah Bernhardt, *Bust of Louise Abbéma* [detail], 1878, marble, 54 x 22 x 22 cm. Musée d'Orsay, Paris. Photo: © Miranda Mason

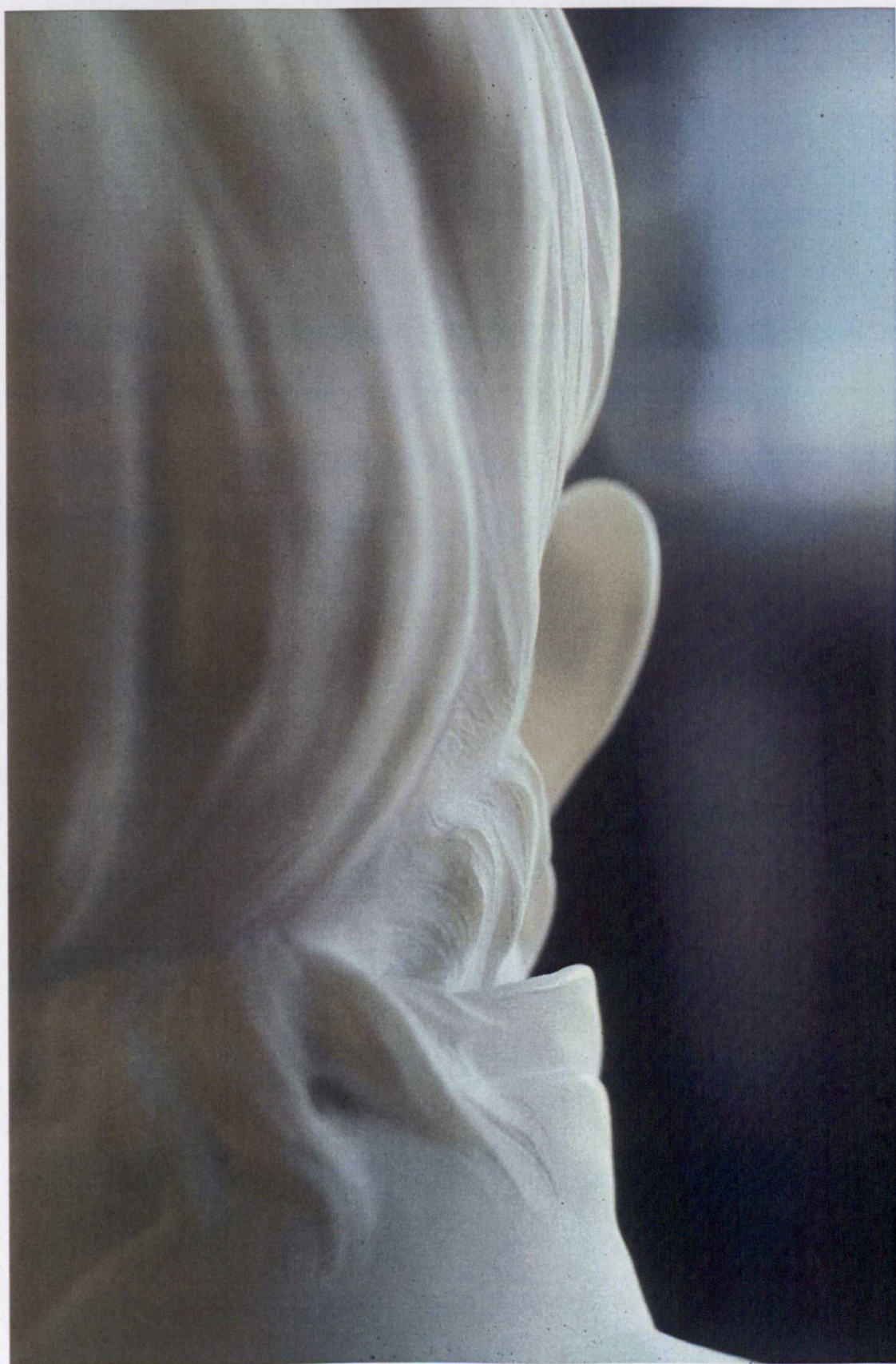


Fig. 1: 18(s) Sarah Bernhardt, *Bust of Louise Abbéma* [detail], 1878, marble, 54 x 22 x 22 cm. Musée d'Orsay, Paris. Photo: © Miranda Mason

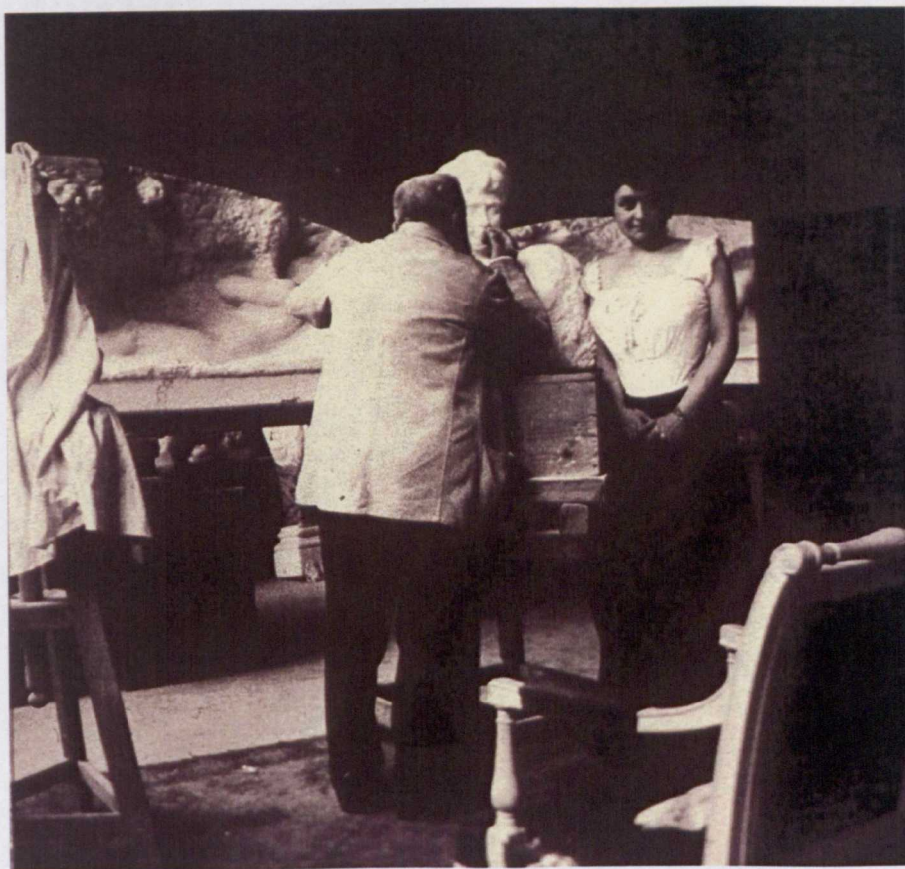


Fig. 1: 19 Anon., 'Auguste Rodin retouchant le buste de Madame Simpson', 1903, photograph, 8.9 x 9.6 cm. Musée Rodin, Paris



Fig. 1: 20 Anon., 'Atelier de praticiens travaillant pour différents sculpteurs', c. 1893, citrate print photograph, 17 x 23.4 cm. Musée Rodin, Paris



Fig. 1: 21 Louise Abbéma, 'Portrait de Mlle L. Abbéma d'après Sarah Bernhardt', 1879, reproduced drawing, 8.6 x 4.4 cm. Reproduced in Georges Lecocq, *Louise Abbéma* (1879) and *L'Art* (1879)

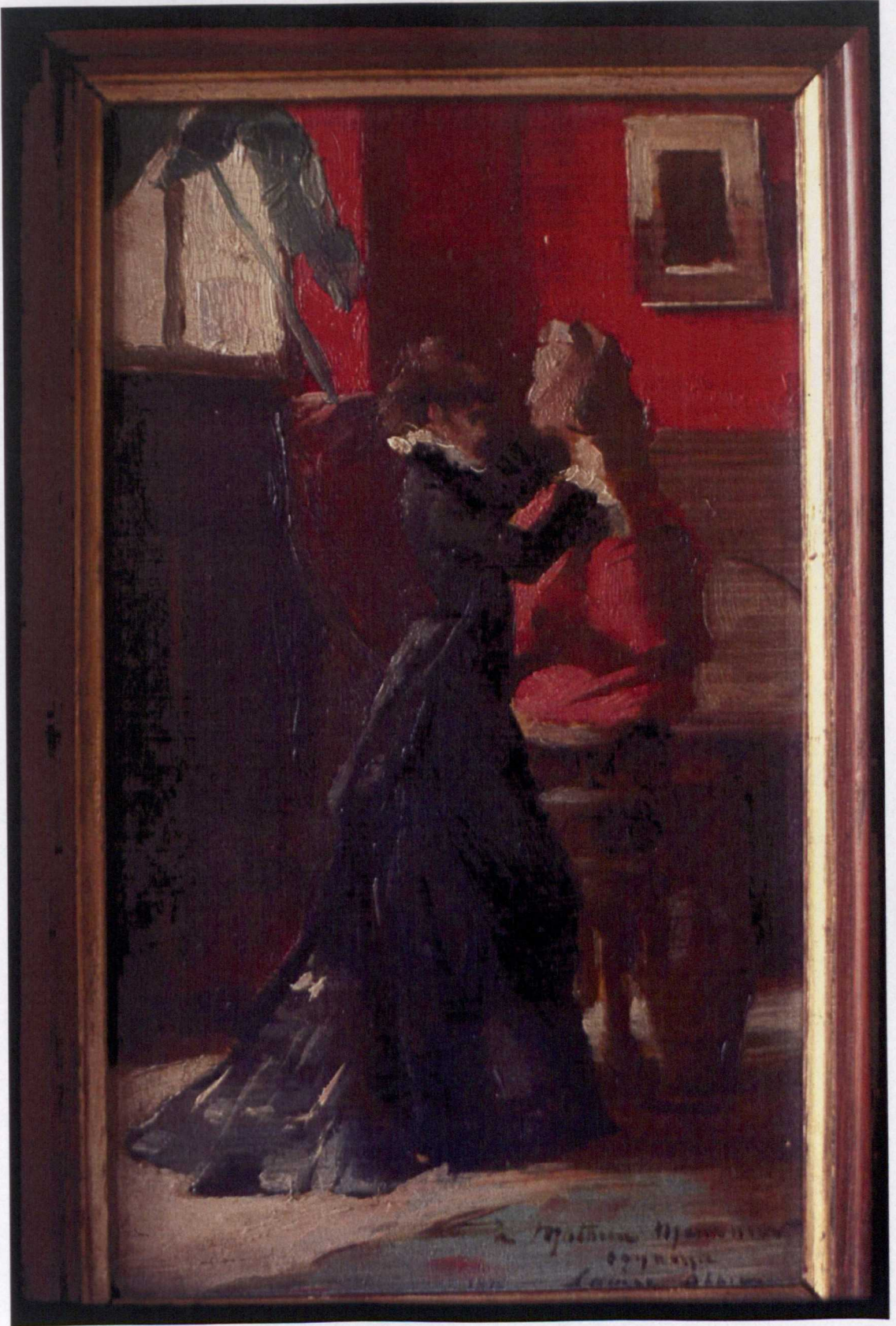


Fig. 1: 22 Louise Abbéma, Sarah Bernhardt working on a portrait bust in the studio at 11 boulevard de Clichy, 1875, oil on board, 25 x 15.3 cm. Private collection, Paris. Photo: © Miranda Mason



Fig. 1: 23 Louise Abbéma, Sarah Bernhardt working on a portrait bust in the studio at 11 boulevard de Clichy [detail], 1875, oil on board, 25 x 15.3 cm. Private collection, Paris. Photo: © Miranda Mason

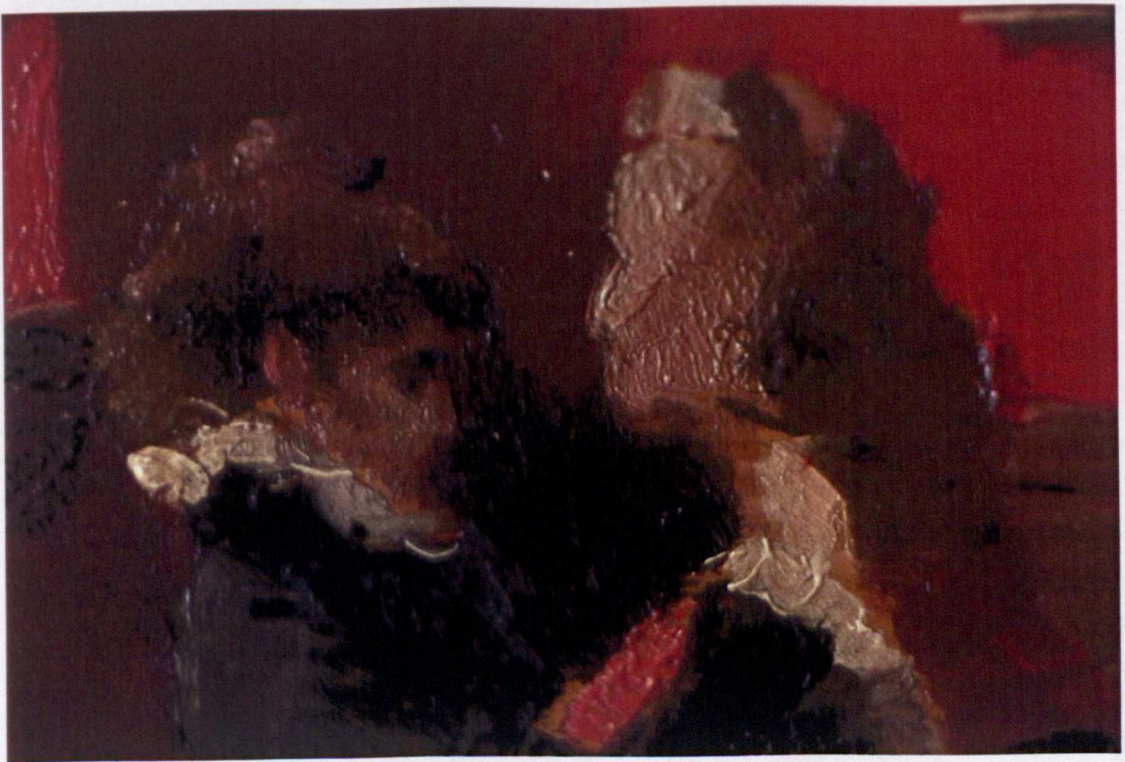


Fig. 1: 24 Louise Abbéma, Sarah Bernhardt working on a portrait bust in the studio at 11 boulevard de Clichy [detail], 1875, oil on board, 25 x 15.3 cm. Private collection, Paris. Photo: © Miranda Mason



Fig. 1: 25 Sarah Bernhardt, Portrait of Louise Abbéma, 1875, bronze medallion, 21.5 x 18.1 x 3.8 cm. Museum of Fine Arts, Boston



Fig. 1: 26 Boissonas et Taponnier, 'Mademoiselle Louise Abbéma', c. 1876-79, reproduced photograph, dimensions not known. Source of reproduction not identified. BNFDEP



Fig. 1: 27 Atelier Nadar, Portrait of Louise Abbéma, c. 1877, photographic print from original collodion glass negative for carte album photograph, 14.2 x 10 cm. BNFDEP



Fig. 1: 28 Atelier Nadar, Portrait of Louise Abbéma, c. 1877, photographic print from original collodion glass negative for carte album photograph, 14.2 x 10 cm. BNFDEP



Fig. 1: 29 Atelier Nadar, c. 1877, Portrait of Louise Abbéma, photographic print from original collodion glass negative for carte album photograph, 14.2 x 10 cm. BNFDEP



Fig. 1: 30 Louise Abbéma, Self-portrait, 1876, oil on canvas, 36 x 25 cm. Private collection, not located (for sale: Binoche, Paris, 23 May 2000 and Anaf, Lyon, 4 February 2001)



Fig. 1: 31 Louise Abbéma, Self-portrait, ?1886, drawing, dimensions not known. Source of reproduction not identified. Source: MOSD dossier Abbéma



Fig. 1: 32 Atelier Nadar, Portrait of Louise Abbéma, , c. 1877, photographic print from original collodion glass negative for carte album photograph, 14.2 x 10 cm. BNFDEP



Fig. 1: 33 Atelier Nadar, Portrait of Louise Abbéma, c. 1877, photographic print from original collodion glass negative for carte album photograph, 14.2 x 10 cm. BNFDEP



Fig. 1: 34 Achille Melandri, Portrait of Sarah Bernhardt with the *Bust of Louise Abbéma* in the atelier-salon at 41 avenue de Villiers, c. 1878-79, photogravure by C. Ruckert of original photographic print on albumenized paper from a collodion glass negative, 13.9 x 10 cm. Reproduced in Jules Huret, *Sarah Bernhardt* (Paris; London, 1899). Also reproduced in *La Quinzaine* (c. 1904-7), dimensions not known



Fig. 1: 35 Achille Melandri, 'Collage images Sarah Bernhardt' with portrait of Sarah Bernhardt with the *Bust of Louise Abbéma* [top right] in the atelier-salon at 41 avenue de Villiers, c. 1878-79, photo-aquarelle for a carte album [photograph of original montage of photographic prints on albumenized paper from collodion glass negatives and watercolour], mounted on card, 16.5 x 10.9 cm; photoaquarelle only: 13.9 x 10.1 cm. BNF DAS

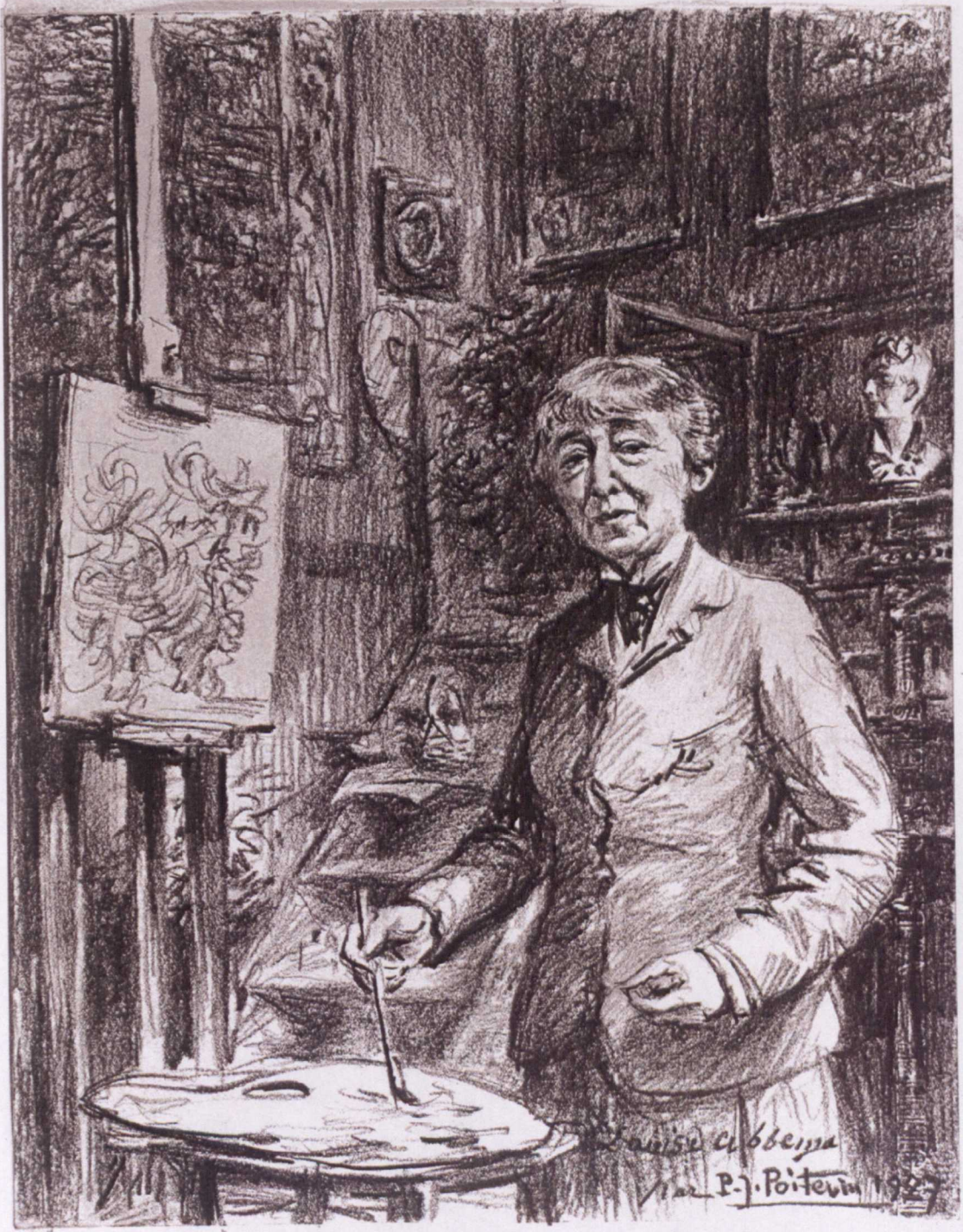


Fig. 1:36 Pierre-Jean Poitevin, Louise Abbéma in her studio, 1927, drawing, medium not known, dimensions not known. Possibly for reproduction in unidentified source. Private collection, not located

2 Home is where the Art Is: Sarah Bernhardt's Sculpture Studio



Fig. 2: 1 Achille Melandri, 'Sarah Bernhardt dans son cerceuil', c. 1878-79, portrait of Sarah Bernhardt in a coffin with the *Bust of Louise Abbéma* in the atelier-salon at 41 avenue de Villiers [head turned towards bust], carte album photographic portrait print on albumenized paper from a collodion glass negative, mounted on card: with mount 16.6 x 10.7 cm; photo only 14.4 x 9.9 cm. BNFDEP



Fig. 2: 2 Achille Melandri, 'Sarah Bernhardt dans son cerceuil', c. 1878-79, portrait of Sarah Bernhardt in a coffin with the *Bust of Louise Abbéma* in the atelier-salon at 41 avenue de Villiers [another bust in cloche visible on the left], reproduced photograph of original carte album photographic portrait print on albumenized paper from a collodion glass negative, 14.7 x 10.1 cm. Original photograph not located. Reproduced in Sarah Bernhardt, *My Double Life* (London, 1907)



Fig. 2: 3 Marie-Désiré Bourgoïn (1839-1912), Sarah Bernhardt with the model for or a reduced version of *Après la Tempête* in the atelier-salon at 41 avenue de Villiers, 1879, watercolour on unidentified backing, 76 x 64 cm. Collection of Lady Jane Abdy, London



Fig. 2: 4 Marie-Désiré Bourgoïn (1839-1912), Atelier-salon at 41 avenue de Villiers with painting equipment, watercolour and gouache over graphite on paper, 67.8 x 53.1 cm. Metropolitan Museum of Art, New York



Fig. 2: 5 Félix Lucas, 'Un coin de l'atelier de sculpture' or 'L'Atelier de sculpture de Mlle. Sarah Bernhardt' [avenue de Villiers], 1881, reproduced wood engraving of original black ink drawing, 22.5 x 22.2 cm. Original drawing and engraving not located. Reproduced in *La Vie moderne* (28 May 1881)

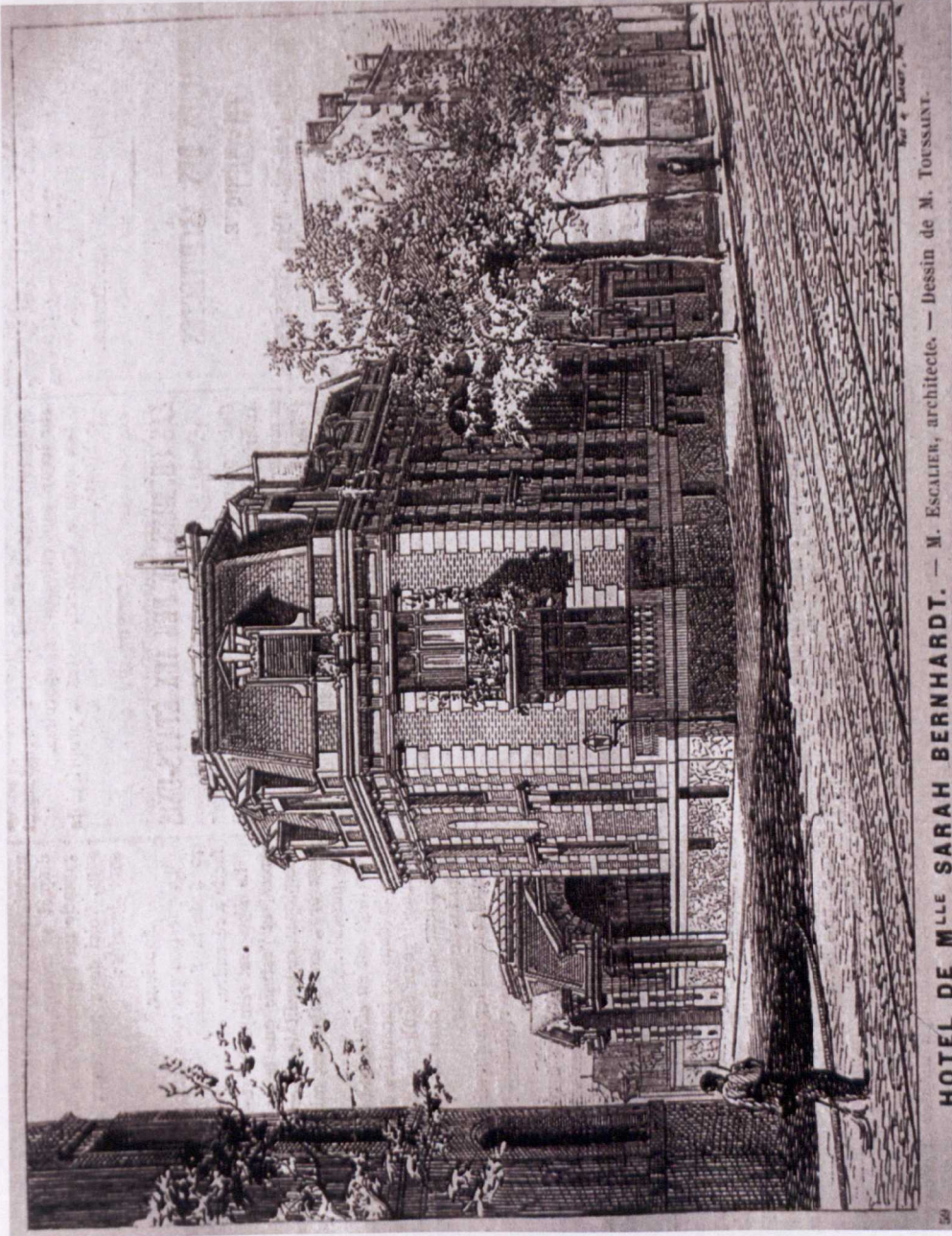


Fig. 2: 6 Toussaint, 'Hôtel de Mlle Sarah Bernhardt', 1877, reproduced engraving by Yves et Barret of black ink drawing, dimensions not known. Original drawing and engraving not located. Reproduced in *La Semaine des constructeurs* (September 1877)



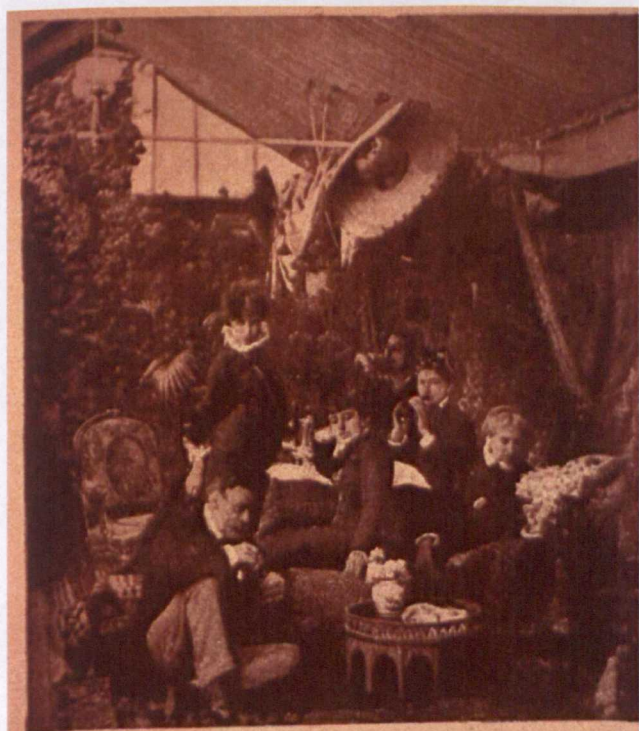
Fig. 2: 7 Marie-Désiré Bourgoïn, (1839-1912), *L'atelier de sculpture de Sarah Bernhardt* [avenue de Villiers], 1877, watercolour, 26 x 35.5 cm. Musée de la Vie romantique, Paris. Photo: © Miranda Mason



Fig. 2: 8 Louise Abbéma, *Le Déjeuner dans la Serre* [conservatory at avenue de Villiers], 1877, oil on canvas, 194 x 308 cm. Musée des Beaux-Arts de Pau



Fig. 2: 9 Louise Abbéma, Sketch for *Le Déjeuner dans la Serre*, 1876, oil on canvas, 55 x 80 cm. Private collection, not located



Une réunion intime dans l'Atelier de Sarah Bernhardt
(1875).

Fig. 2: 10 Anon., Group in the conservatory at avenue de Villiers [clockwise from middle left: Sarah Bernhardt; Georges Clairin; Mme. Guérard; Louise Abbéma's mother, Henriette Anne Sophie Léonie Abbéma, née D'Astoin; Louise Abbéma; Louise Abbéma's father, Émile Abbéma), c. 1877, reproduced photographic print, 7.4 x 6.5 cm. Original photograph not located. Reproduced in *L'Art du théâtre* (1905) and *Le Théâtre et commoedia illustré* (June 1923) [as 'Une réunion intime dans l'Atelier de Sarah Bernhardt']

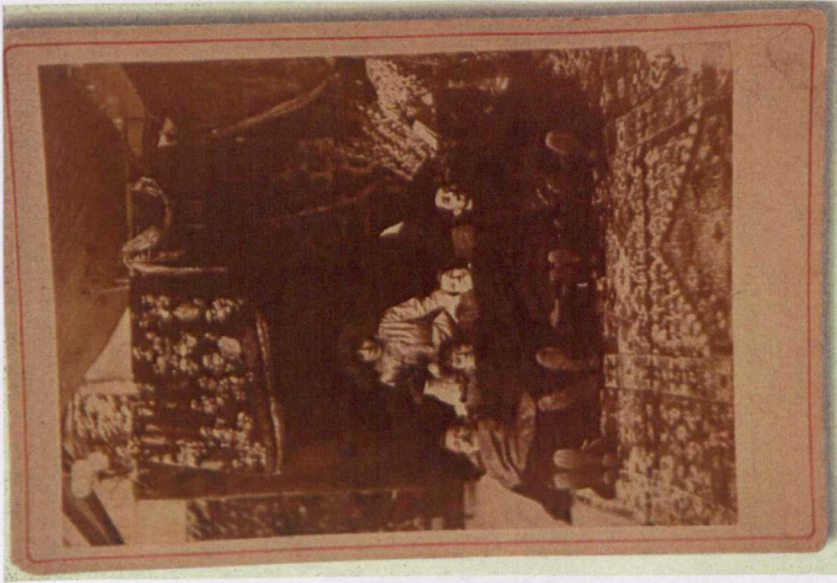


Fig. 2: 11 Anon., Group in the conservatory at avenue de Villiers [Sarah Bernhardt, Émile Abbéma, Louise Abbéma, Mme Guérard, Georges Clairin], c. 1877, carte album photographic portrait print on albumenized paper from a collodion glass negative mounted on card, 16.5 x 10.8 cm. Laurence Senelick Collection of Theatrical Imagery, West Medford, MA



Fig. 2: 12 Anon., Bernhardt and Abbéma as Pasha and Odalisque in the conservatory at avenue de Villiers, c. 1877, carte album photographic portrait print on albumenized paper from a collodion glass negative mounted on card, 16.4 x 12.1 cm. BNF/DAS

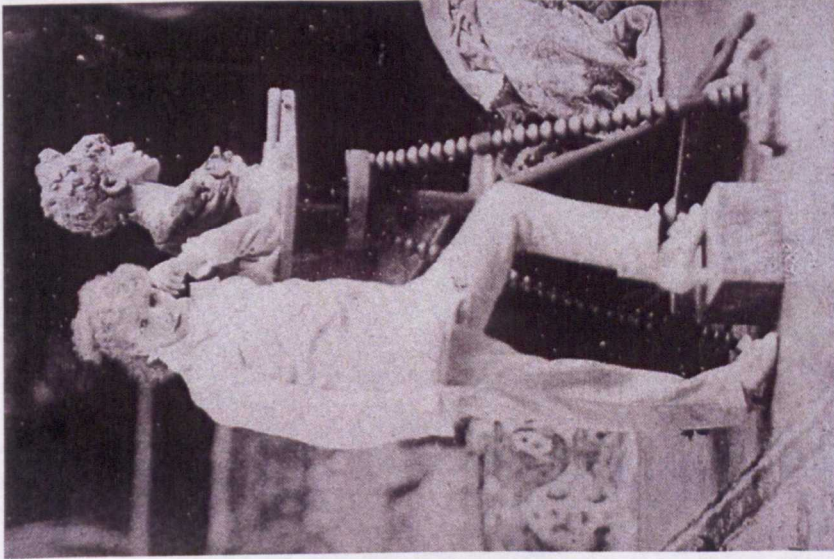


Fig. 2: 13 Achille Melandri, Sarah Bernhardt in the atelier-salon at avenue de Villiers with a self-portrait bust [modeling tool in front of thigh], c. 1878-79, carte album photographic portrait print on albumenized paper from a collodion glass negative mounted on card. 16.5 x 11.4 cm. Houghton Theatre Collection, Harvard University, Cambridge, MA



Fig. 2: 14 Achille Melandri, Sarah Bernhardt in the atelier-salon at avenue de Villiers with self-portrait bust [modeling tool between thighs], c. 1878-79, modern photographic print from an original collodion glass negative, no dimensions. BNFDEP

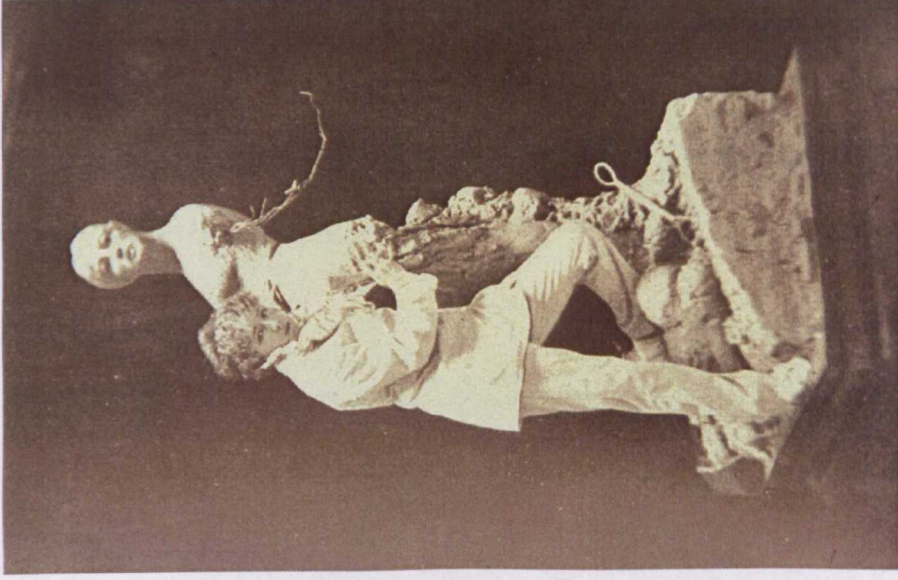


Fig. 2: 16 Achille Melandri, Sarah Bernhardt in her sculpture studio with *Médée*, c. 1878-79, reproduced photograph of original carte album photographic portrait print on albumenized paper from a collodion glass negative, 15.2 x 10.1 cm. Reproduced in *My Double Life* (1907)



Fig. 2: 15 Achille Melandri, Sarah Bernhardt in the atelier-salon at avenue de Villiers with self-portrait bust [modeling tool between thighs], c. 1878-79m, reproduced as woodburytype photograph, 11.7 x 8 cm. Reproduced in *The Theatre* (1 July 1879)



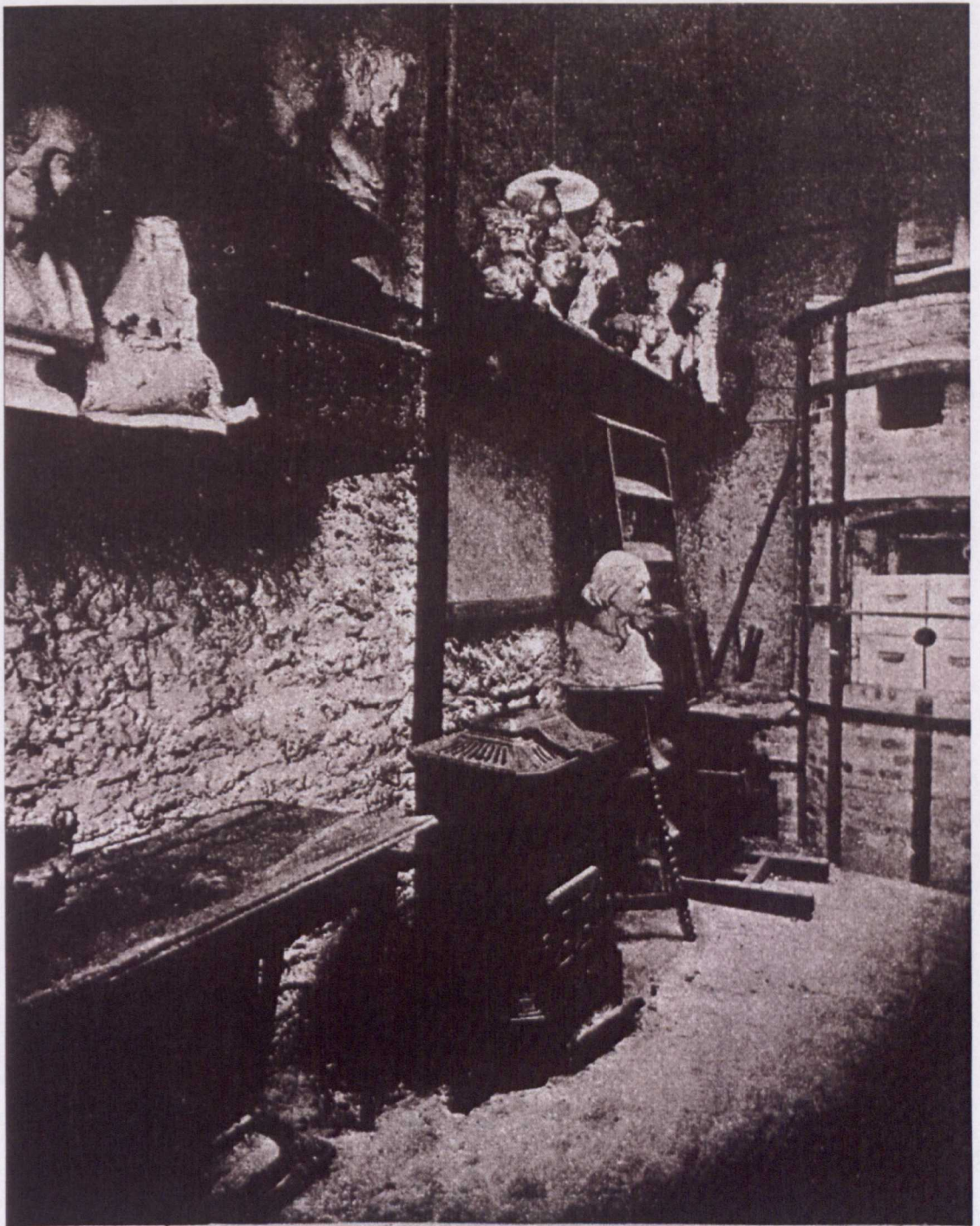
Fig. 2: 17 Achille Melandri, Sarah Bernhardt in the atelier-salon at avenue de Villiers with *La Marchande des palmes*, c. 1878-79, reproduced photogravure of original carte album photographic portrait print on albumenized paper from a collodion glass negative, 13.9 x 10 cm. Reproduced in *My Double Life* (1907). Also reproduced in *Strand Magazine* (1904); *Ma Double vie* (1907); *Illustrated London News* (1907)



Fig. 2: 18 Ernest de Lipphart, Sarah Bernhardt in the atelier-salon at avenue de Villiers, c. 1876-86, wood engraving of original black ink drawing, dimensions not known. Original drawing and engraving not located. Source of reproduction not identified. Source: copy in Archive of the Comédie-Française



Fig. 2: 19 Félix Lucas, 'L'atelier de peinture de Sarah Bernhardt' or 'Un coin de l'atelier' [avenue de Villiers], 1881, wood engraving of original black ink drawing, 27 x 22.2 cm. Original drawing and engraving not located. Reproduced in: *La Vie moderne* (28 May 1881)



Atelier de sculpture de SARAH BERNHARDT.

Fig. 2: 20 Anon., 'L'Atelier de sculpture de Sarah Bernhardt' [boulevard Pereire], 1900, reproduced photographic print, 10.9 x 8.9 cm. Original photograph not located. Reproduced in *La Plume* (September 1900)

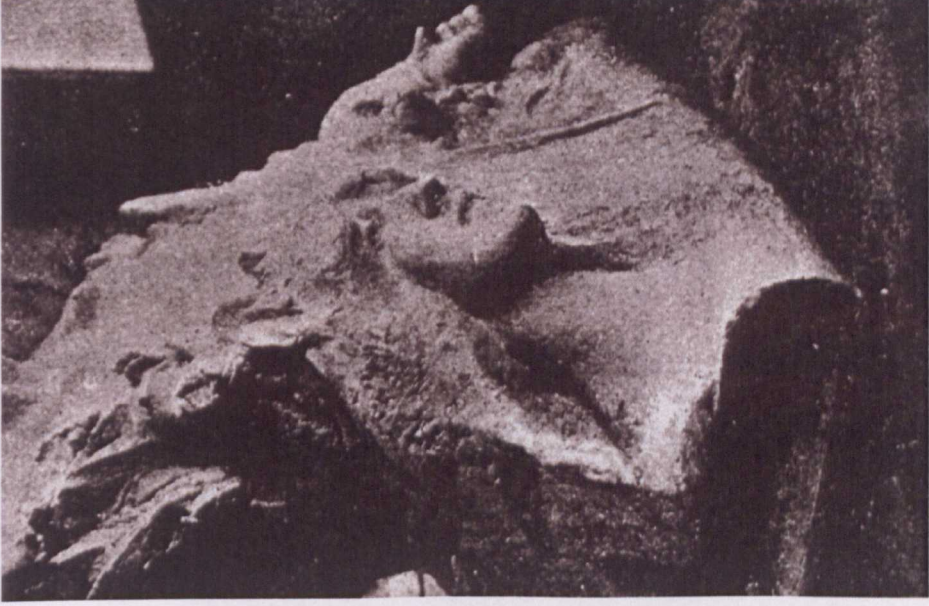
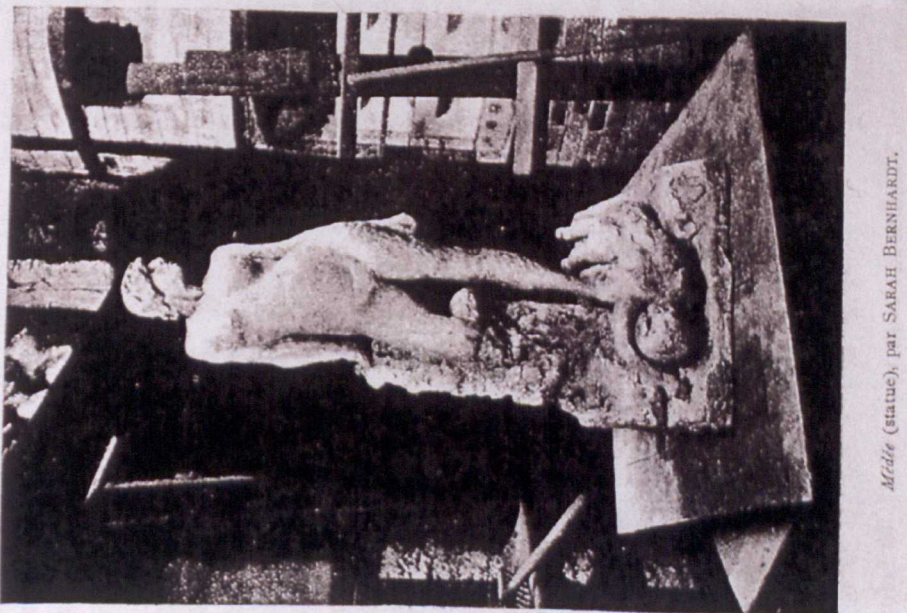


Fig. 2: 22 Anon., 'Figures décoratives d'un buste par Sarah Bernhardt' [sculpture studio at boulevard Pereire], 1900, reproduced photographic print, 9.1 x 6.5 cm. Original photograph not located. Reproduced in *La Plume* (September 1900)



Médée (statue), par SARAH BERNHARDT.

Fig. 2: 21 Anon., 'Médée (statue), par Sarah Bernhardt' [sculpture studio at boulevard Pereire], 1900, reproduced photographic print, 12.9 x 8.9 cm. Original photograph not located. Reproduced in *La Plume* (September 1900)

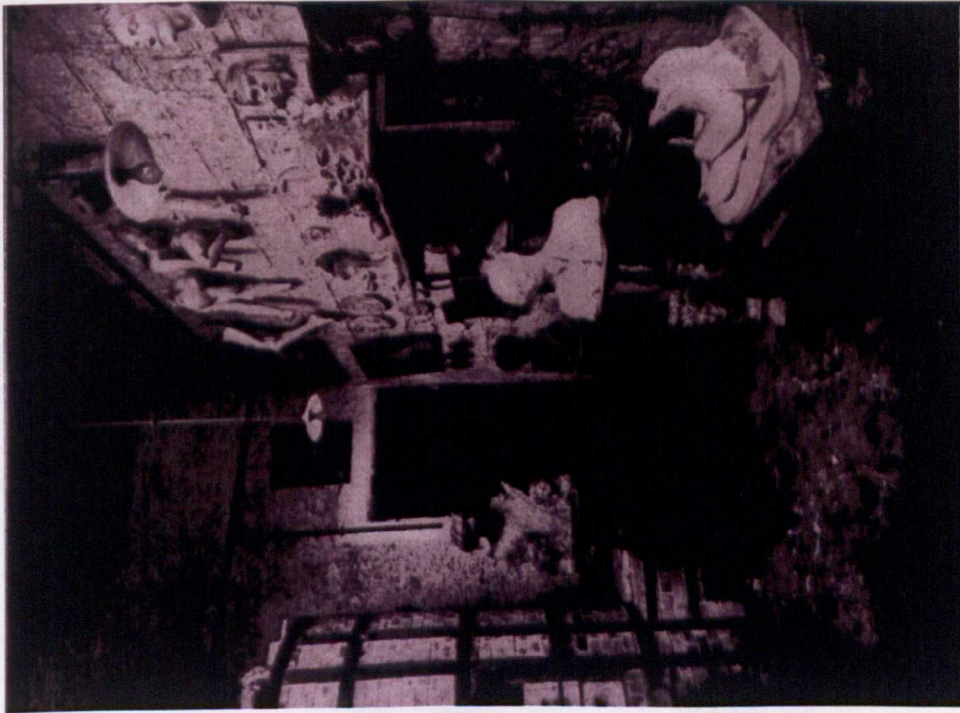


Fig. 2: 23 Anon., 'L'atelier de Sarah Bernhardt' [sculpture studio at boulevard Pereire], 1900, reproduced photographic print, dimensions not known. Original photograph not located. Reproduced in *Le Monde illustré* (7 April 1923)

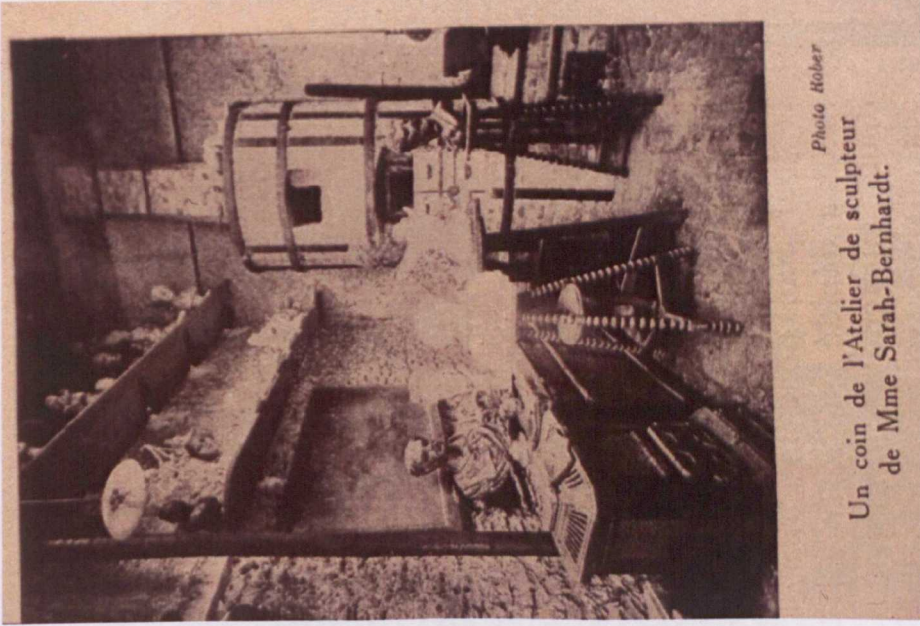
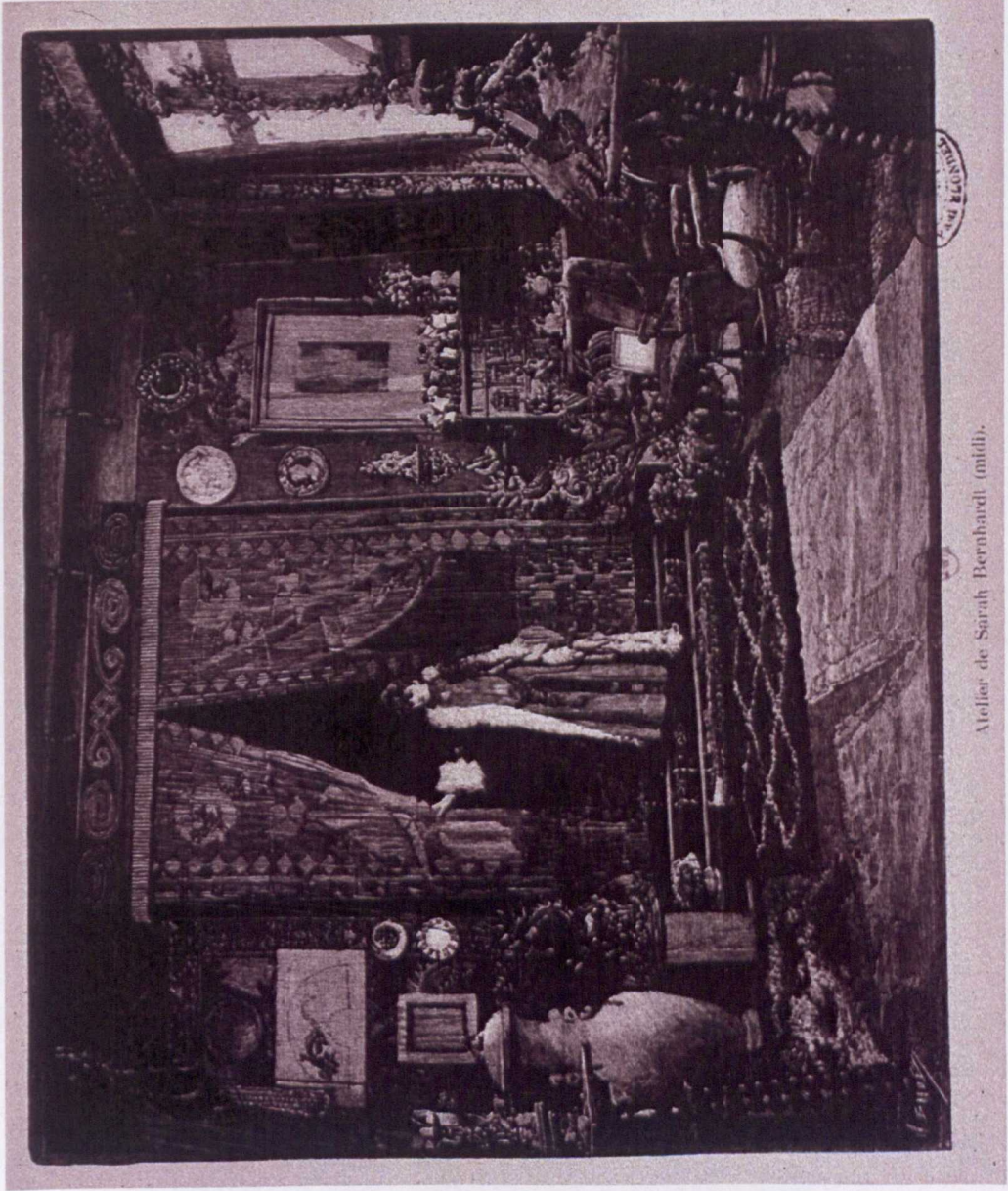


Photo Rober

Un coin de l'Atelier de sculpteur de Mme Sarah-Bernhardt.

Fig. 2: 24 Rober, 'Un coin de l'atelier de sculpture de Mme Sarah Bernhardt' [boulevard Pereire], c. 1923, reproduced photographic print, 8.1 x 6.5 cm. Original photograph not located. Reproduced in *La Théâtre et comœdia illustré* (June 1923)



Atelier de Sarah Bernhardt (midi).

Fig. 2: 25 H. Baude, 'Atelier de Sarah Bernhardt (midi)', 1888, engraving of original drawing, 13.7 x 17 cm. Original drawing and engraving not located. Reproduced in *La Revue illustrée* (1888) and *Art Journal* (1888)

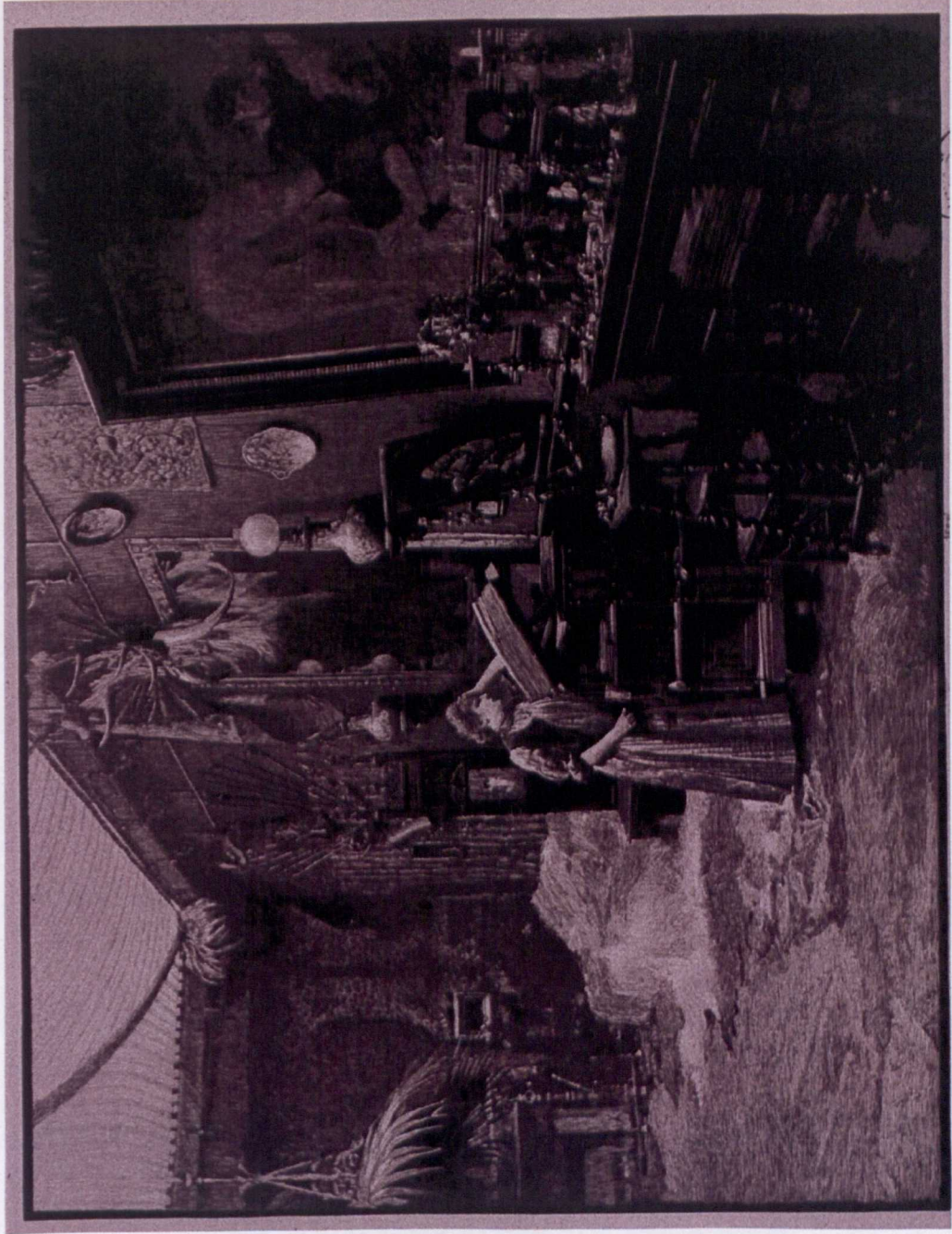


Fig. 2: 26 [?]H. Baude, 'Atelier de Sarah Bernhardt (nord)', 1888, engraving of original drawing, 17.5 x 23 cm. Original drawing and engraving not located. Reproduced in *La Revue illustrée* (1888) and *Art Journal* (1888)



Fig. 2: 27 ?H. Baude, 'Petit salon et store japonais' [boulevard Pereire], 1888, engraving of original drawing, 13.3 x 10.3 cm. Original drawing and engraving not located. Reproduced in *La Revue illustrée* (1888) and *Art Journal* (1888)



Atelier. — Vue d'ensemble (Fond).
General View of Studio (from Entrance).

Fig. 2: 28 Anon., 'Atelier — Vue d'ensemble (fond)' [boulevard Pereire], c. 1890s, reproduced photograph, dimensions not known. Original photograph not located. Reproduced in *The Home of Sarah Bernhardt in Paris* (Paris: Taber Bas Relief, n.d.)

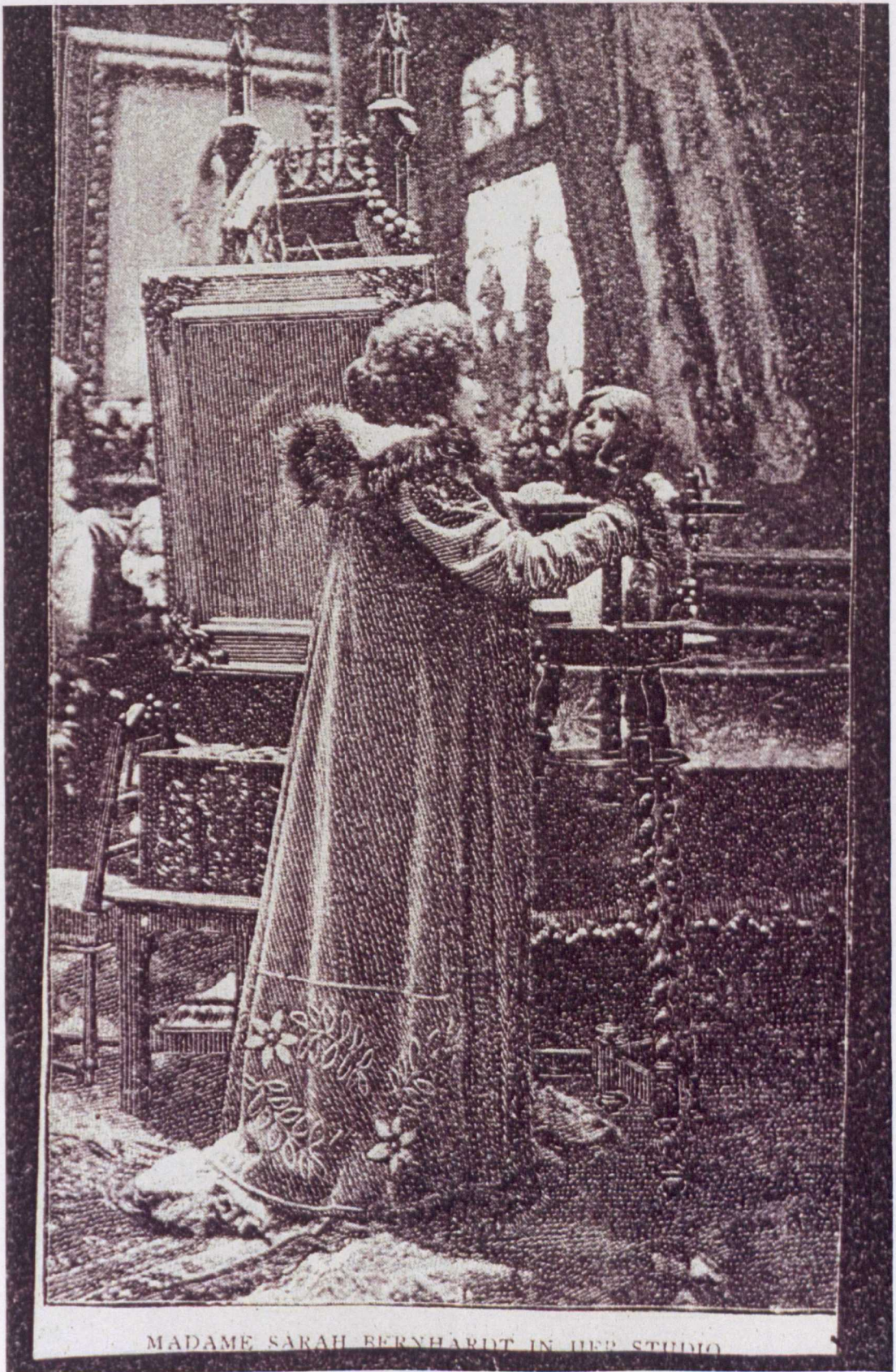


Fig. 2: 29 Anon., 'Madame Bernhardt in her studio' [boulevard Pereire, with bust of girl in progress], c. 1890s, reproduced photograph, dimensions not known. Original photograph not located. Source of reproduction not known. Source: cutting in Victoria and Albert Theatre Museum, London

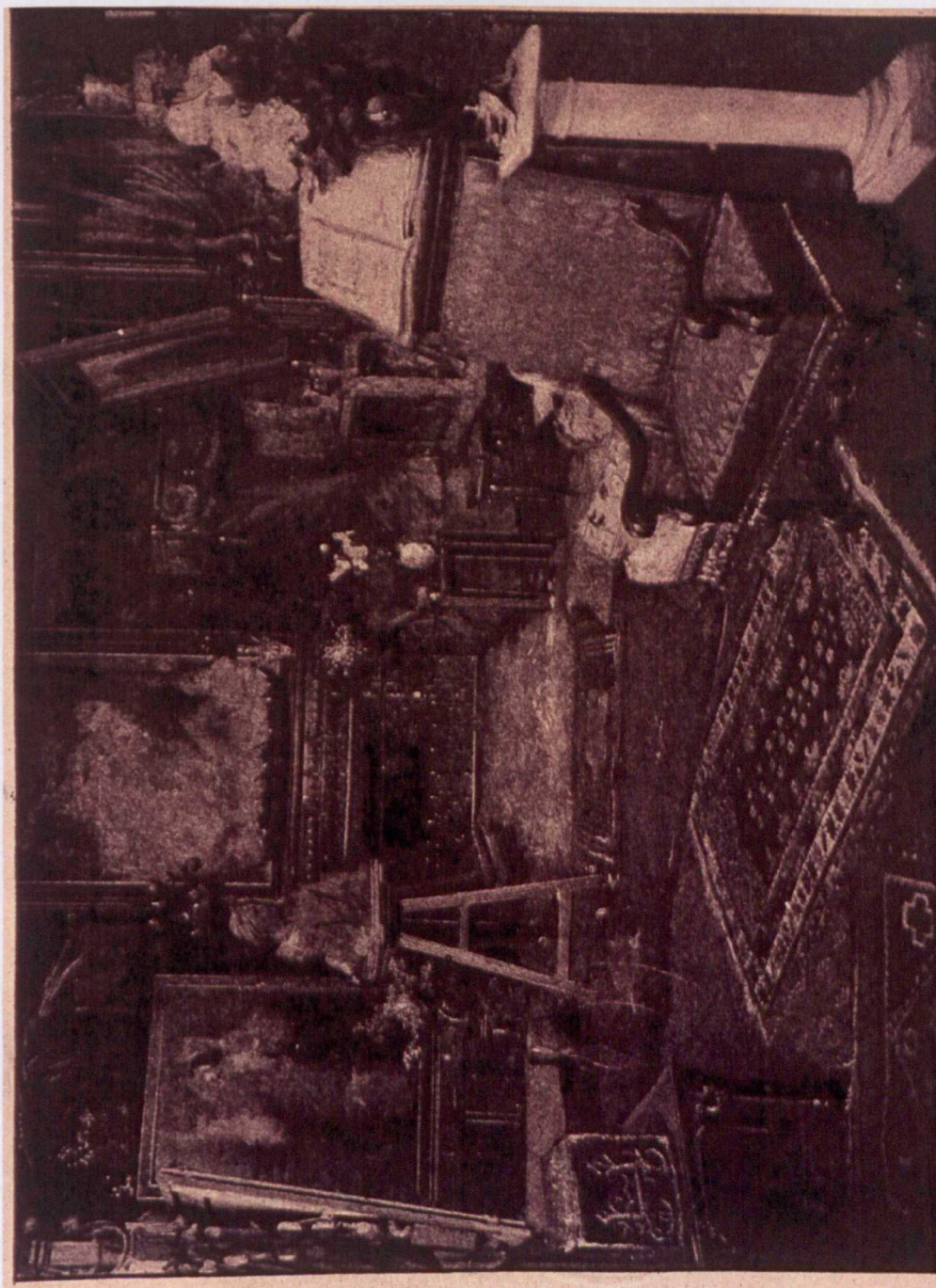


Fig. 2: 30 Anon., 'Mme Bernhardt's drawing-room' [boulevard Pereire, with *Bust of Victorien Sardou*], c. 1890s, reproduced watercolour or photograph, 9.8 x 13 cm. Original photograph or watercolour not located. Reproduced in Jules Huret, *Sarah Bernhardt* (1899)



Un Côté d'Atelier
One Side of the Studio

Fig. 2: 31 Anon., 'Un côté d'atelier' [boulevard Pereire, with the *Bust of Régina*], c. 1890s, reproduced photograph, dimensions not known. Original photograph not located. Reproduced in *The Home of Sarah Bernhardt in Paris*



Un Coin d'Atelier
A Corner of the Studio

Fig. 2: 32 Anon., 'Un coin d'atelier' [boulevard Pereire, with the *Bust of Jacques Damala*], c. 1890s, reproduced photograph, dimensions not known. Original photograph not located. Reproduced in *The Home of Sarah Bernhardt in Paris*



Un Coin d'Atelier
A Corner of Studio

Fig. 2: 33 Anon., 'Un coin d'atelier' [with the *Bust of a Granddaughter or Young Girl/Simone*], c. 1890s, reproduced photograph, dimensions not known. Original photograph not located. Reproduced in *The Home of Sarah Bernhardt in Paris* (c. 1890s)



Fig. 2: 34 Anon., Sarah Bernhardt in her library [with Mathieu-Meunier's reduced marble *La Mort de Lais*], c. 1890s, reproduced photograph, dimensions not known. Original photograph not located. Source of reproduction not known. Reproduced in Wildenstein and Co., *Sarah Bernhardt and her Times* (1984)



Fig. 2: 35 Georges Clairin, 'Regnault et Clairin dans une maison de Nanterre, aux avant-postes, 18 January 1871', 1871, reproduced pencil drawing, 7.4 x 9.7 cm. Original drawing not located. Reproduced in Armand Dayot, *L'Invasion, le Siège, la Commune 1870-1871* (1901)



Fig. 2: 36 ?Lagraine, 'Le peintre Henri Regnault et Georges Clairin à l'entrée de la salle des deux sœurs à l'Alhambra de Grenade' [with Frédéric Auguste Laguillierme and Henry Mauzaize], c. 1868, photographic print on albumenized paper from a collodion glass negative, 20.8 x 16 cm. Musée d'Orsay, Paris



Fig. 2: 38 Georges Clairin, *Portrait de Mlle Sarah Bernhardt, sociétaire de la Comédie-Française*, 1876, oil on canvas, 250 x 200 cm. Musée du Petit Palais, Paris

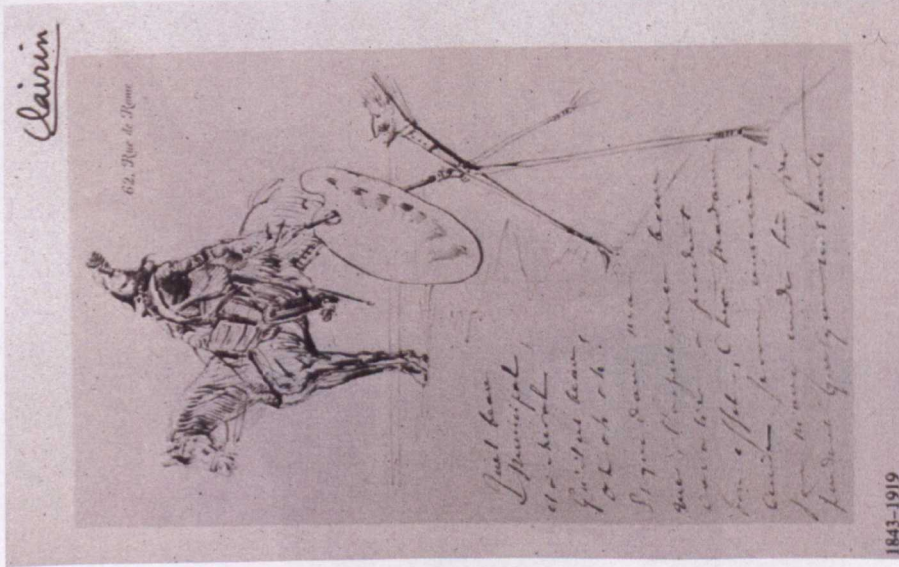


Fig. 2: 37 Georges Clairin, 'Mounted Guardsman with self-caricature of the artist on a letter to an unknown woman', c. 1883, brown ink on off-white laid letter paper, 20.4 x 13 cm. Private collection, not located. Source: Archive of Shepherd Gallery Associates, New York



Fig. 2: 39 Anon., 'Mlle Louise Abbéma, Le déjeuner dans le fond de l'aquarium', 1877, reproduced drawing, 6.7 x 11.3 cm. Original drawing not located. Source of reproduction not known. Source: cutting in Bibliothèque INHA, Paris. Photo: © Miranda Mason



Fig. 2: 40 Louise Abbéma, *Le Déjeuner dans la Serre* [detail], 1877, oil on canvas, 194 x 308 cm. Musée des Beaux-Arts de Pau. Photo: © Miranda Mason

3 Making Work: The Sculpture Practice of Sarah Bernhardt



Fig. 3:1 Lagraine, Sarah Bernhardt with life-size plaster group *Après la Tempête* (1876, not located), photographic print on albumenized paper from a collodion glass negative, mounted on card, with mount: 31.3 x 24.1; photograph only: 14.6 x 11.2 cm. BNFDAS



Fig. 3:2 Sotheby's, Reduced bronze version of *Après la Tempête* (1876, height 73.7 cm. Founder not known. Private collection, not located), reproduced photograph, 14.8 x 14.6 cm in *Nineteenth- and Twentieth Century Sculpture*, Sotheby's, New York, 26 May 1994



Fig. 3:3 Anon., Reduced marble version of *Après la Tempête* (1876, height 77 cm. Private collection, not located), reproduced photograph in unidentified publication, c. 1876, 11.7 x 8.9 cm. Original photograph not located



Fig. 3: 4 Anon., Clay or plaster version of *Après la Tempête* (1876, dimensions not known. Not located), photograph or reproduced photograph in unidentified publication, c. 1876, dimensions not known. Original photograph not located. Re-photographed for *Art nouveau, art deco* (1998) by Philippe Joffre, dimensions not known



Fig. 3: 5 Sarah Bernhardt, '*Après la Tempête* par Sarah Bernhardt', 1876, reproduced drawing, dimensions not known. Original drawing not located. Source of reproduction not identified. BNF/DAS

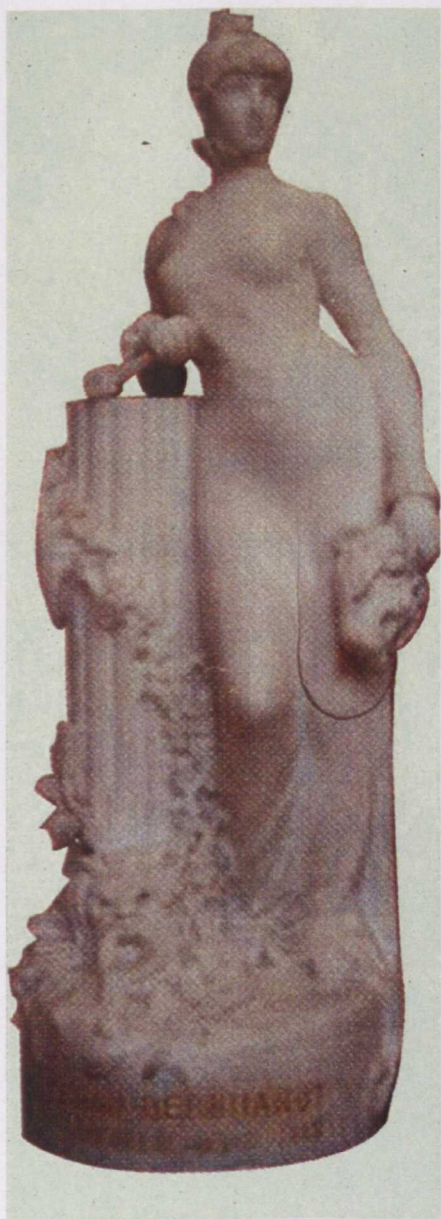


Fig. 3:6 Sarah Bernhardt, *Statuette de Sarah Bernhardt* (1880, marble, height 49 cm. Private collection, not located), reproduced photograph in *La Gazette de l'Hôtel Drouot* (18 May 2005), captioned: 'Marbre: Sarah Bernhardt par Sarah Bernhardt elle-même' and dated 1885, 10.8 x 3.9 cm

Fig. 3:7 Sarah Bernhardt, *Statuette de Sarah Bernhardt* [detail]



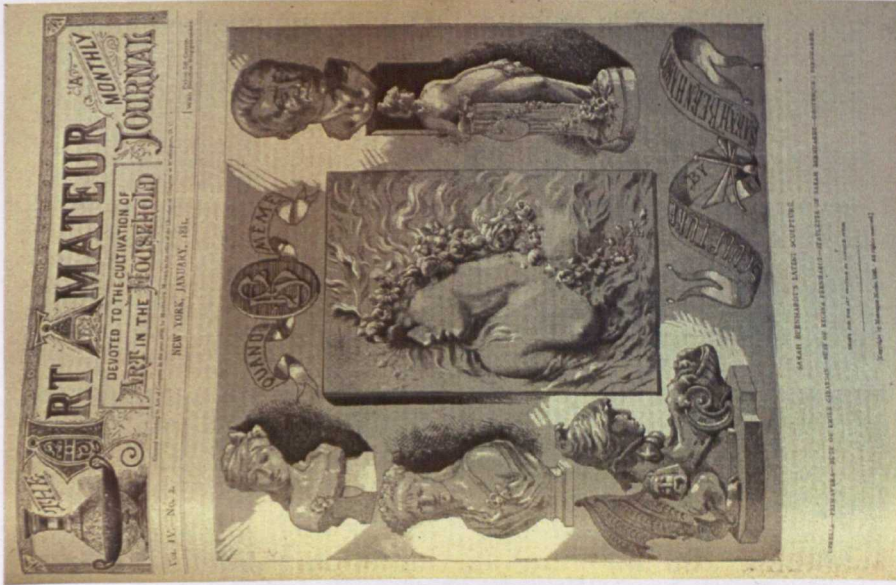


Fig.3:8 Camille Piton, 'Sarah Bernhardt's latest sculpture', 1880-81, reproduced drawing, dimensions not known. Original drawing not located. Reproduced as front page of *The Art Amateur: A Monthly Journal Devoted to the Cultivation of Art in the Household* (January 1881)

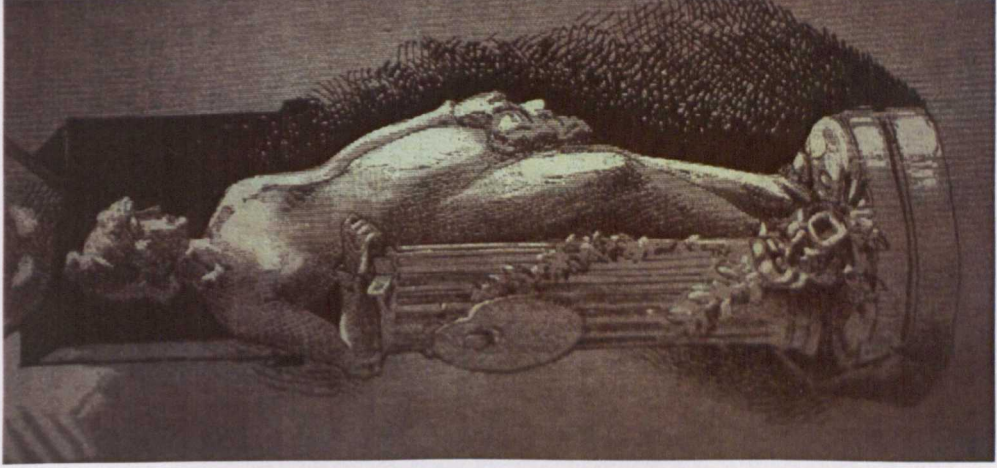


Fig.3:9 Camille Piton, 'Sarah Bernhardt's latest sculpture' [detail of *Statuette of Sarah Bernhardt*]



Fig. 3:10 Anon., 'Ophelia, sculpture by Sarah Bernhardt' (1880, plaster or marble bas relief, dimensions not known), reproduced photograph, 1880 or after, 10.1 x 15.1 cm, in Sarah Bernhardt, *My Double Life* (London: Heinemann, 1907). Original photograph not located



Fig. 3:11 Camille Piton, 'Sarah Bernhardt's latest sculpture' [detail of *Ophélie*]

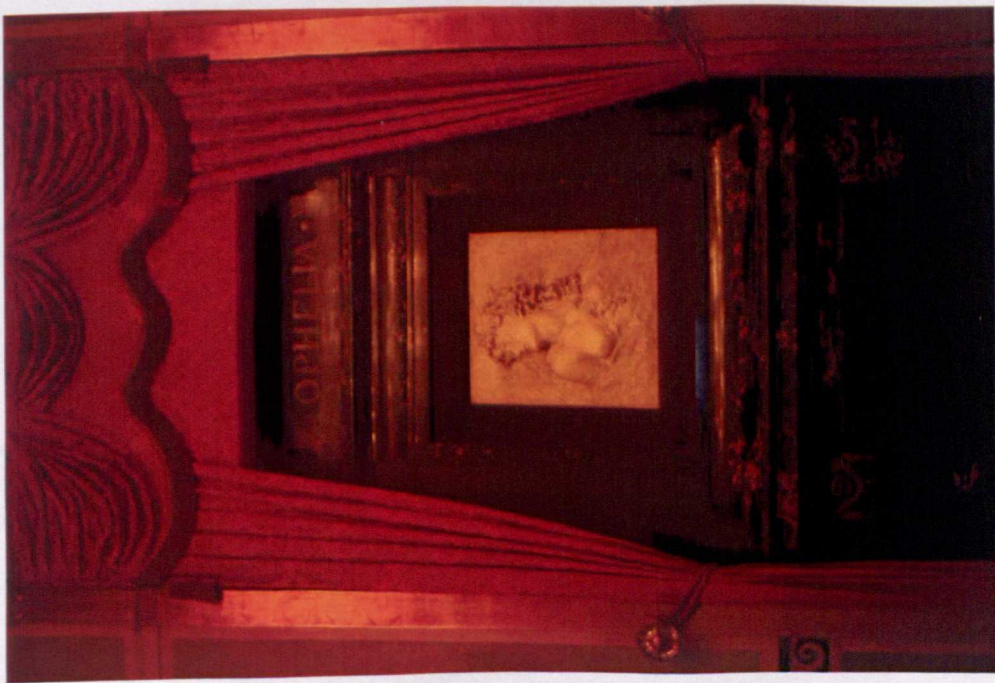


Fig. 3:12 Sarah Bernhardt, *Ophélie*, 1880, marble bas relief, 70 x 60 x 8 cm. Royal Theatre, Copenhagen. Photo: © Miranda Mason

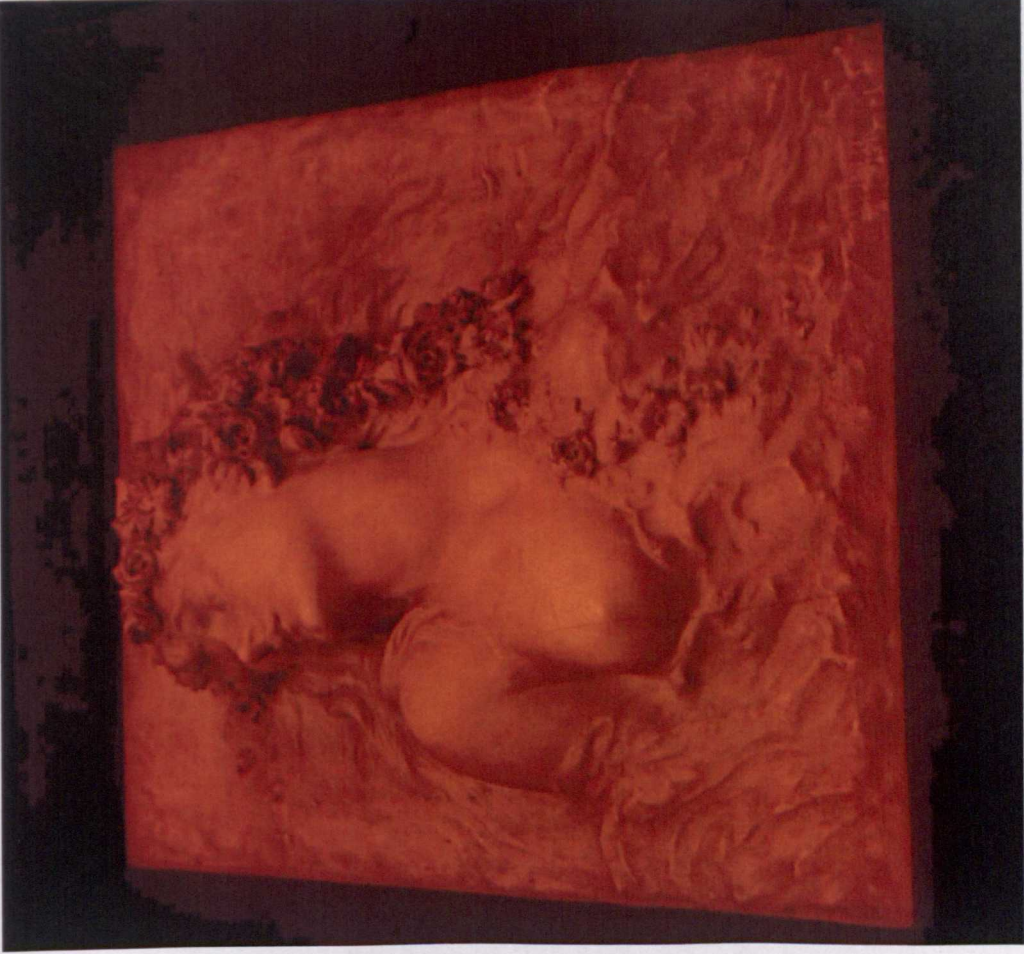


Fig. 3:13 Sarah Bernhardt, *Ophélie*, 1880, marble bas relief, 70 x 60 x 8 cm. Royal Theatre, Copenhagen. Photo: © Miranda Mason



Fig. 3:14 Sarah Bernhardt, *Ophélie*, 1880, marble bas relief, 70 x 60 x 8 cm. Royal Theatre, Copenhagen. Photo: © Miranda Mason

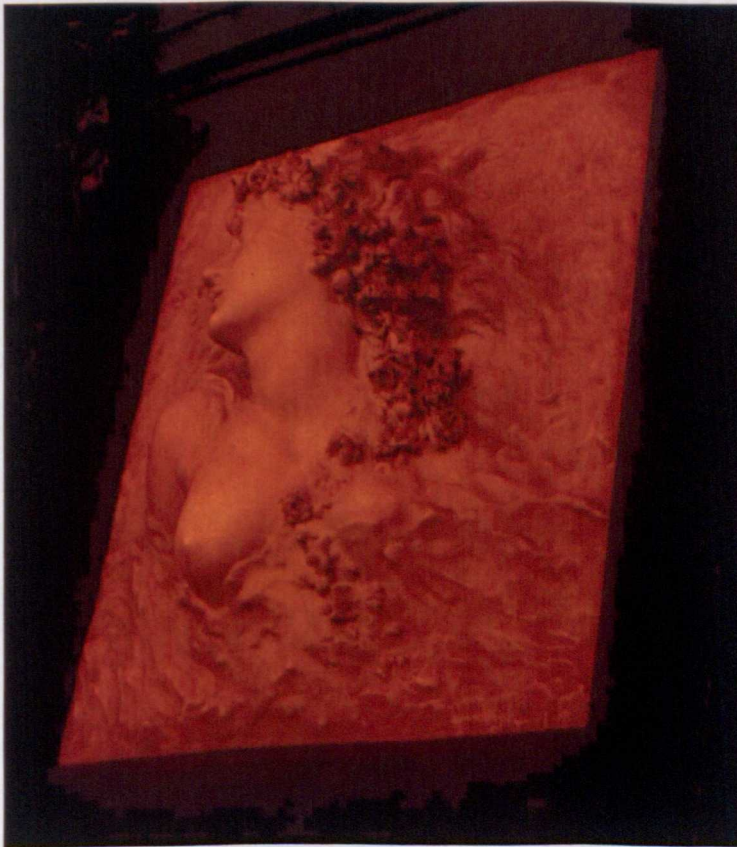


Fig. 3:15 Sarah Bernhardt, *Ophélie*, 1880, marble bas relief, 70 x 60 x 8 cm. Royal Theatre, Copenhagen. Photo: © Miranda Mason



Fig 3:16 Sarah Bernhardt, *Ophélie*, 1880, marble bas relief [detail], 70 x 60 x 8 cm. Royal Theatre, Copenhagen. Photo: © Miranda Mason

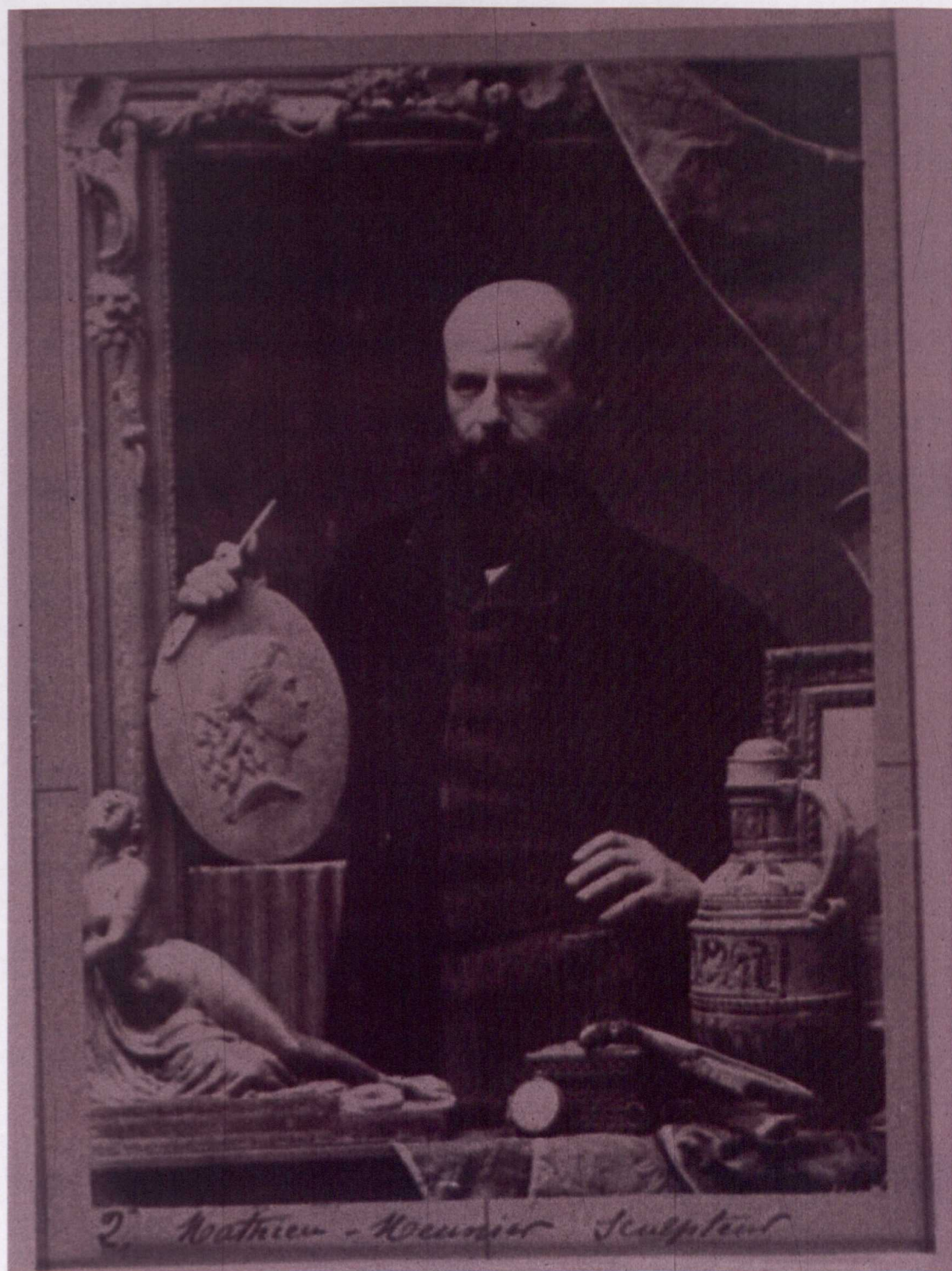


Fig. 3:17 Atelier Nadar, Portrait of Roland Mathieu-Meusnier in studio scene with *La Mort de Laïs*, medallion in progress, sculpture tools, and other objects, after 1849, photograph, dimensions not known. BNFDEP

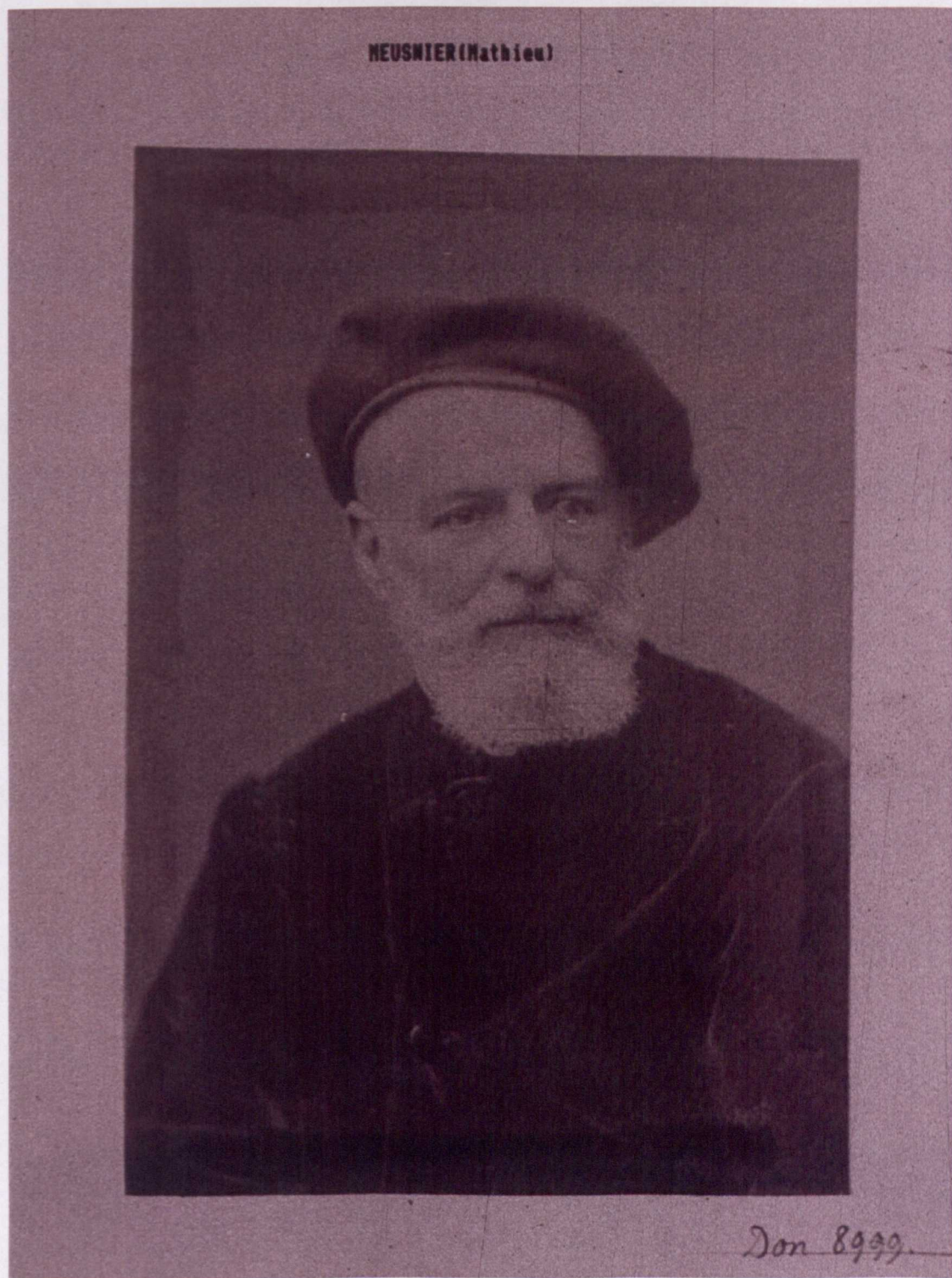


Fig. 3:18 Anon., Portrait of Roland Mathieu-Meusnier in old age, n.d., photograph, dimensions not known. BNFDEP



Fig. 3:19 Pierre Etienne Carjat (1828-1906), Portrait of Jules Franceschi, n.d., carte de visite photographic print on albumenized paper from a glass negative, 10.5 x 6 cm. Musée d'Orsay, Paris



Fig. 3:20 Roland Mathieu-Meusnier, *Bust of Pierre Hyacinthe Azais*, 1842, marble, 80 x 50 x 41 cm. Musée national du château de Versailles. Photo: © Miranda Mason



Fig. 3:21 Roland Mathieu-Meusnier, *Bust of Pierre Hyacinthe Azais* [detail], 1842, marble, 80 x 50 x 41 cm. Musée national du château de Versailles. Photo: © Miranda Mason



Fig. 3:22 Roland Mathieu-Meusnier, *Bust of Jean-Bernard Rosier*, 1844, bronze, height 26 cm. Private collection, Béziers



Fig. 3:23 Roland Mathieu-Meusnier, *La Mort de Laïs*, 1850, marble, 120 x 164 x 66 cm. Jardin des Tuileries, Paris. Photo: © Miranda Mason



Fig. 3:24 Roland Mathieu-Meusnier, *La Mort de Laïs*, 1850, marble, 120 x 164 x 66cm. Jardin des Tuileries, Paris. Photo: © Miranda Mason



Fig. 3:25 Roland Mathieu-Meusnier, *Bust of Pierre Cartellier*, 1859, marble, 85 x 72 x 44 cm. Musée national du château de Versailles. Photo: © Miranda Mason



Fig. 3:26 Roland Mathieu-Meusnier, *La Mort de Laïs* (1859, reduced bronze, height 25.4 x width 33 cm. Private collection, not located. Reproduced photograph on ewolfs.com. Original photograph not located

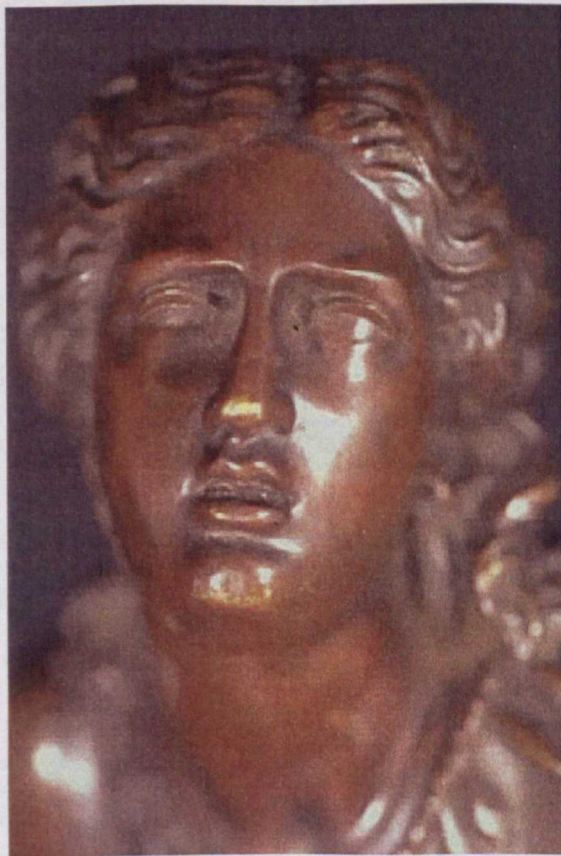


Fig. 3:27 Roland Mathieu-Meusnier, *La Mort de Laïs* [detail] (1859, reduced bronze). Reproduced photograph on ewolfs.com. Original photograph not located



Fig. 3:28 Roland Mathieu-Meusnier. *L'Orfèverie*, 1867, marble, height 195 cm. Cour carrée, musée du Louvre, Paris. Photo: © Miranda Mason



Fig. 3:29 Roland Mathieu-Meusnier, Monument to Antonin Lambert Thiboust with medallion portrait and allegorical figures, *La Comédie* and *La Littérature* [or *la Renommée*], 1868, stone and marble, height 208.5 x width 146 cm, diameter of medallion 40 cm. Montmartre cemetery, Paris. Photo: © Miranda Mason

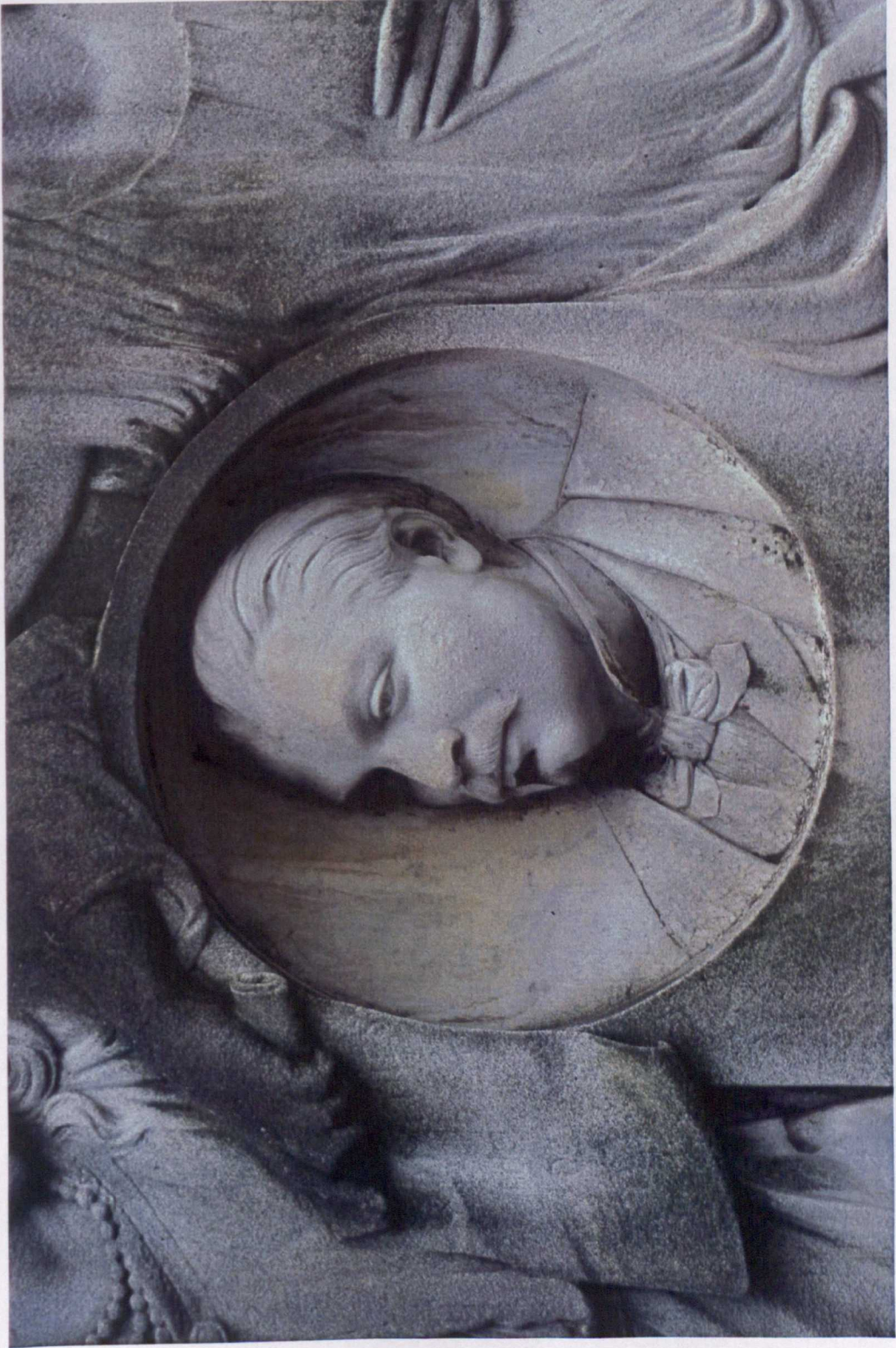


Fig. 3:30 Roland Mathieu-Meusnier, Monument to Antonin Lambert Thiboust [detail of medallion portrait], 1868, marble, diameter 40cm. Montmartre cemetery, Paris. Photo: © Miranda Mason



Fig. 3:31 Roland Mathieu-Meusnier, Monument to Antonin Lambert Thiboust [detail of *la Comédie*], 1868, stone, overall dimensions height 208.5 x width 146 cm. Montmartre cemetery, Paris. Photo: © Miranda Mason



Fig. 3:32 Roland Mathieu-Meusnier, Monument to Antonin Lambert Thiboust [detail of *la Littérature*], 1868, stone, overall dimensions height 208.5 x width 146 cm. Montmartre cemetery, Paris. Photo: © Miranda Mason

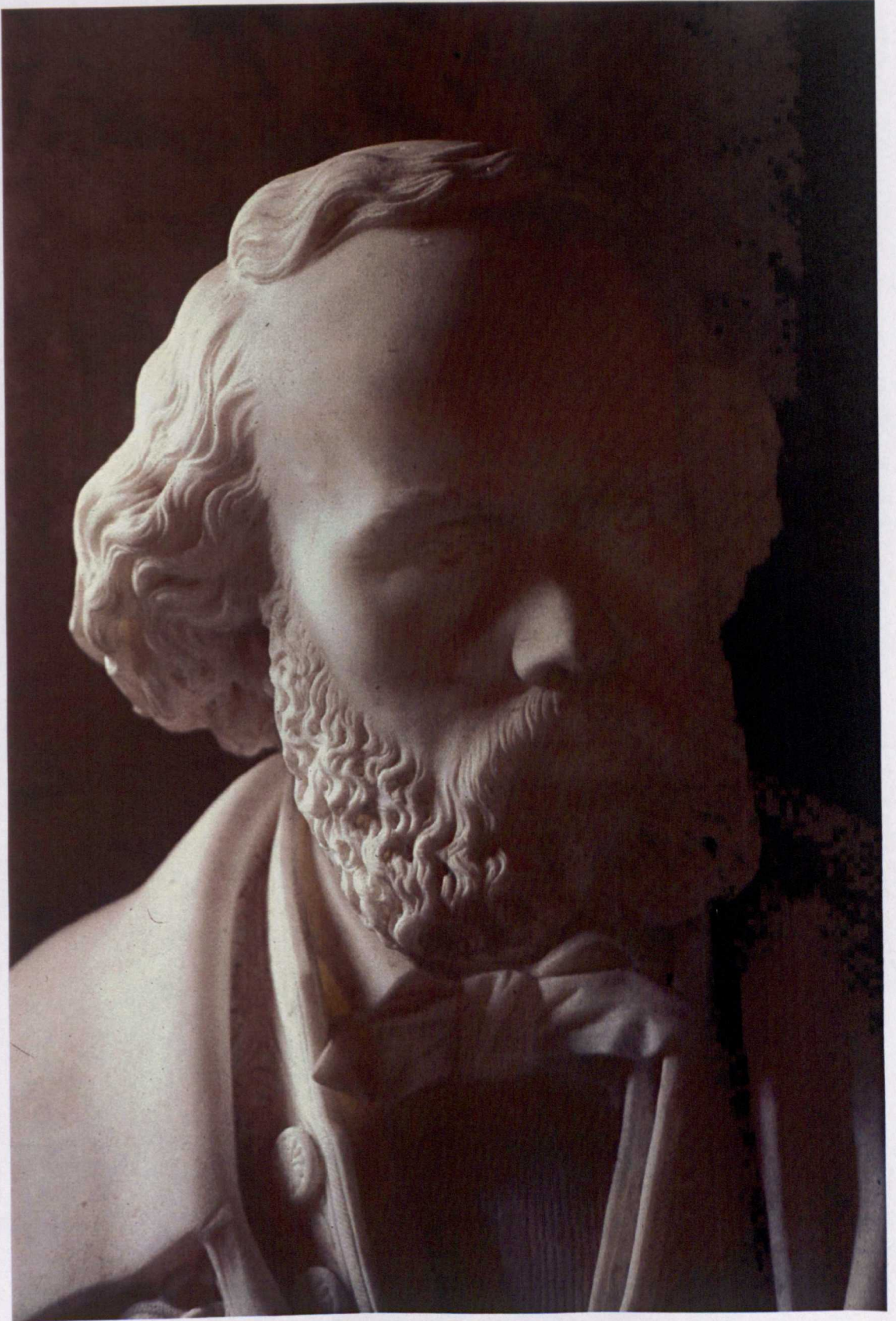


Fig. 3:33 Roland Mathieu-Meusnier, *Bust of Félicien David*, 1880, marble, 86 x 62 x 43 cm. Musée national du château de Versailles. Photo: © Miranda Mason



Fig. 3: 34 Roland Mathieu-Meusnier, Tomb of Mathieu-Meusnier with self-portrait, n.d., bronze medallion, diameter 50 cm. Montmartre cemetery, Paris. Photo: © Miranda Mason



Fig. 3:35 Jules Franceschi, Monument to Miciešlas Kamiński, 1861, bronze, 120 x 183 x 92 cm. Père-Lachaise cemetery, Paris. Photo: © Miranda Mason



Fig. 3:36 Jules Franceschi, Monument to Miccislas Kamienski [detail], 1861, bronze, 120 x 183 x 92 cm. Père-Lachaise cemetery, Paris. Photo: © Miranda Mason



Fig. 3:37 Jules Franceschi, Monument to Miccislas Kamienski [detail], 1861, bronze, 120 x 183 x 92 cm. Père-Lachaise cemetery, Paris. Photo: © Miranda Mason



Fig. 3:38 Jules Franceschi, *Le Réveil*, 1873, marble, 133 x 61 x 80 cm. Musée des beaux-arts, Nîmes. Photo: © Miranda Mason

4 A Pair of Vignettes on the Painting Practice of Louise Abbéma

A l'adresse Alice Ducasse
à la Comédie Française

Ma chère Alice

Comme tu me parais être relativement
la plus raisonnable du groupe d'amis
qui j'ai l'honneur de posséder à taquis les
Bains c'est toi que je charge de
distribuer aux échappés de la maison
du Docteur Blanchet (entre deux amis)
les missives ci-jointes.

Vos lettres pornographiques copiées, m'ont
profondément revolté !

Comme l'austère
Fontaine le surnom autem
de l'histoire universelle
s'a tenu à se loger
que dans un replis
des gorges-Pailly !



Et c'est dans ces asiles, où il
doit ressembler à Marius sur les
ruines de Carthage, que le pudique
Blanchet se montre à nos yeux
revêtu seulement de la déteignure
de son jockey !

J'ai été obligé
de me acheter une
paire de feuilles de Vigne pour
achever la lecture de vos lettres



Fig. 4: 1 Letter from Louise Abbéma to Alice Ducasse, n.d., black ink on paper, 20cm x 30cm.
Fondation Custodia (coll. F. Lugt), Institut Néerlandais, Paris



Fig. 4:2 Louise Abbéma, *Portrait de Sarah Bernhardt, sociétaire de la Comédie Française*, 1876, oil on canvas, 230 x 140 cm. Reproduced in French and English versions of Bernhardt's autobiography, *Ma Double vie* (1907). Not located

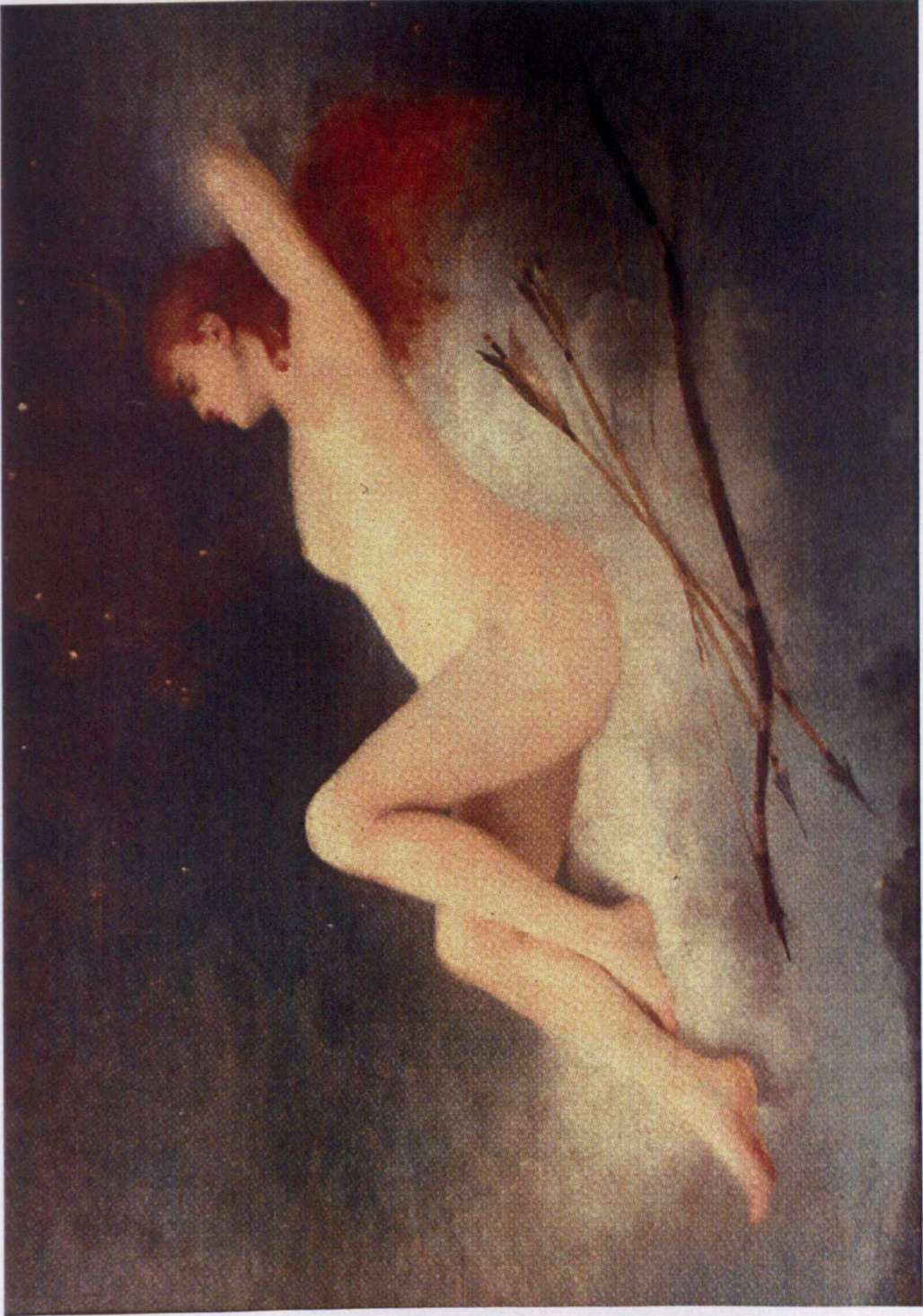


Fig. 4:3 Louise Abbéma, *Le Sommeil de Diane*, 1881, oil on board, 103.5 x 138.5 cm. Reproduced in sale catalogue of Christie's, London, 8 June 2005. Private collection, not located

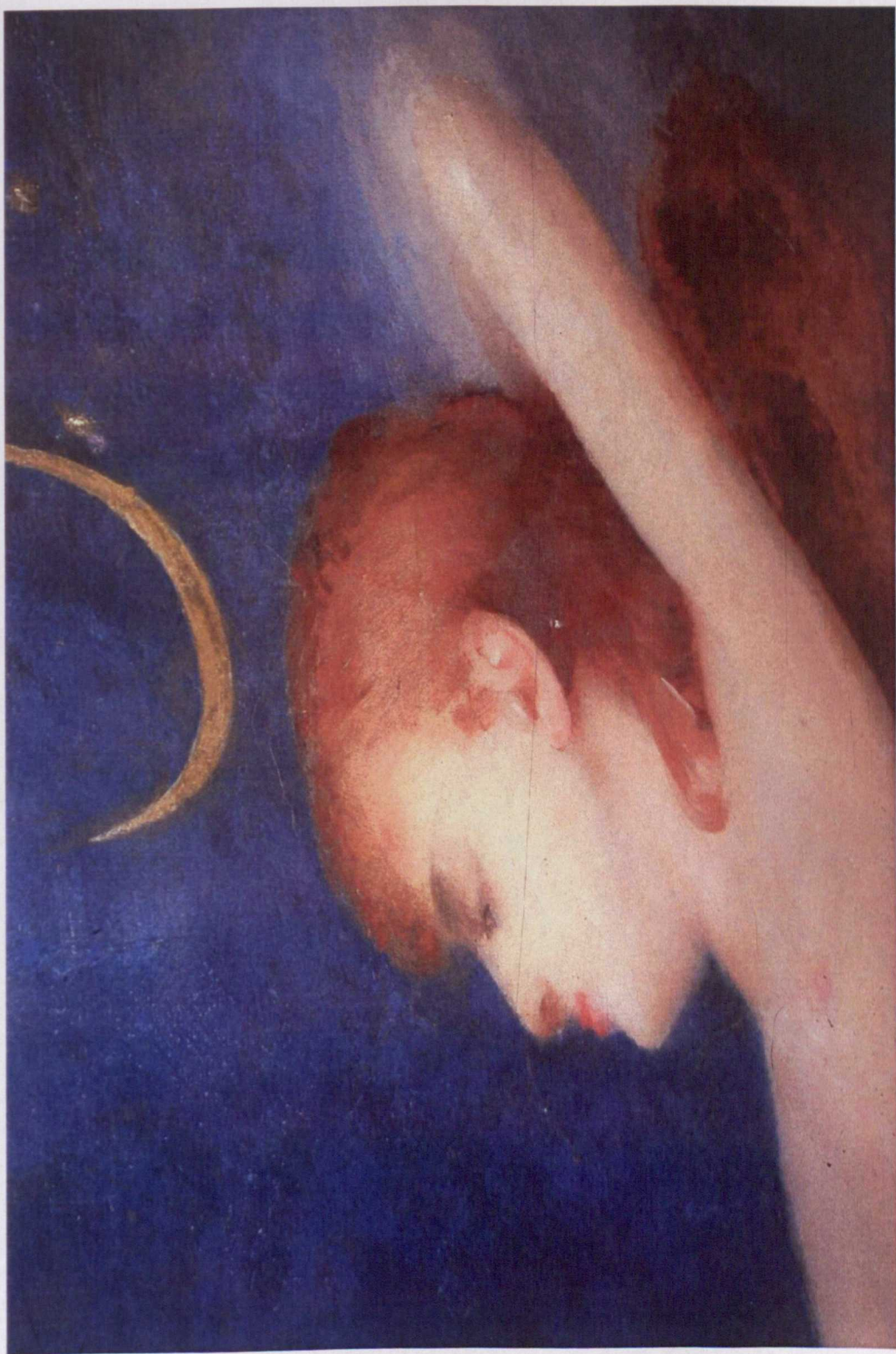


Fig. 4: 4 Louise Abbéma, *Le Sommeil de Diane* [detail], 1881, oil on board, 103.5 x 138.5 cm. Reproduced in sale catalogue of Christie's, London, 8 June 2005. Private collection, not located



Fig. 4:5 Louise Abbéma, *La Chanson de l'après-midi*, 1885, oil on canvas, 150.2 x 220.3 cm. Reproduced in sale catalogue of Sotheby's, New York, 24 May 1995. Private collection, not located



Fig. 4: 6 Louise Abbéma, Sketch for *La Chanson de l'après-midi*, c. 1884-85, oil on board, 35.5 x 43 cm. Reproduced in sale catalogue of Piasa, Paris, 13 December 2002 [incorrectly titled: 'Soirée chez Sarah Bernhardt']. Private collection, not located

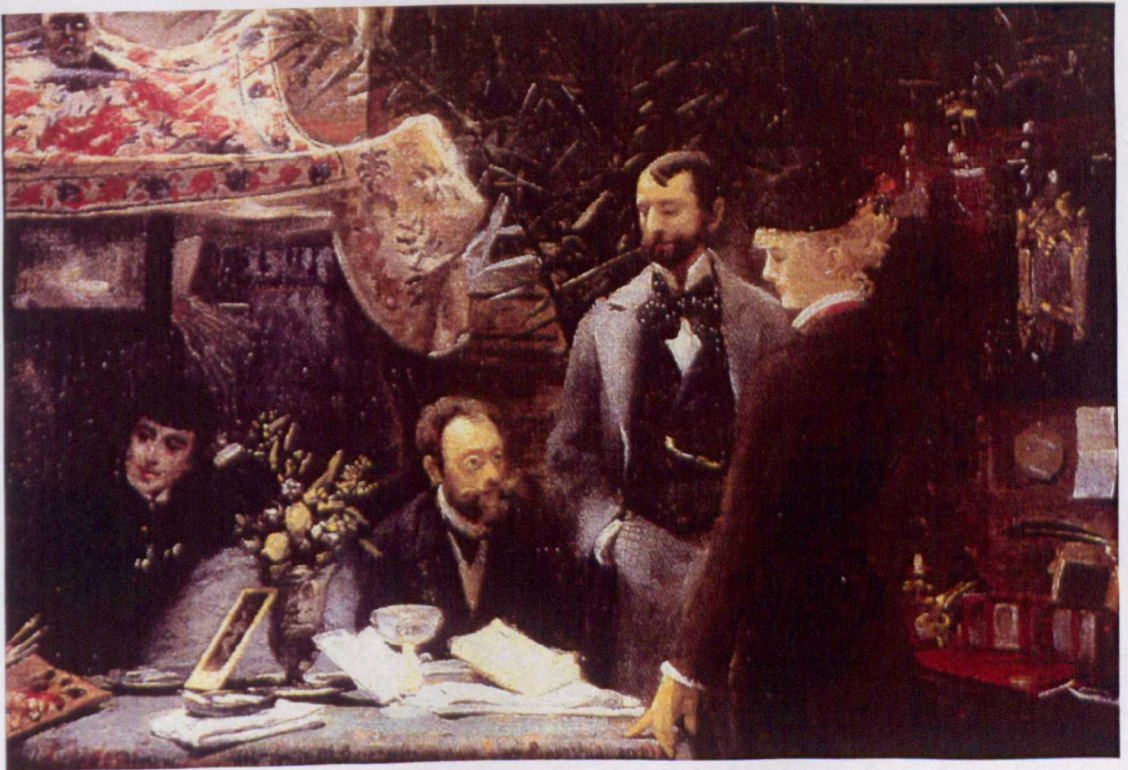


Fig. 4:7 Louise Abbéma, Scene of her studio at rue Lafitte, c. 1884-85, oil on canvas, 50 x 64 cm. Private collection, not located. Source: invitation card in MOSD dossier Abbéma



Fig. 4:8 Léo de Leymarie, Louise Abbéma's mother in an unidentified room at rue Lafitte, 1884, carte album photographic portrait print on albumenized paper from a collodion glass negative, 16.8 x 11.7 cm. Bibliothèque INHA, Paris



Fig. 4:10 Léo de Leymarie, Louise Abbéma with her dog in her studio at rue Lafitte, 1884, carte album photographic portrait print on albumenized paper from a collodion glass negative, 16.9 x 12.2 cm. Bibliothèque INHA, Paris



Fig. 4:9 Léo de Leymarie, Louise Abbéma's father in her studio at rue Lafitte, 1884, carte album photographic portrait print on albumenized paper from a collodion glass negative, 17 x 11.9 cm. Bibliothèque INHA, Paris



Fig. 4: 11 Louise Abbéma, four watercolours of an unidentified woman and Anon., photograph of Louise Abbéma at the piano in her studio at rue Lafitte, n.d., 41 x 22.7 cm (with frame). Musée de la Vie romantique, Paris



Fig. 4:12 Louise Abbéma, 'Silhouette de femme' [possible preparatory drawing for *Portrait de Sarah Bernhardt*, 1876], c. 1871-76, pencil on paper, 14.2 x 8.8 cm. National Museum of Art, Bucharest



Fig. 4:14 Louise Abbéma, Portrait of Sarah Bernhardt, c. 1876, reproduced drawing, dimensions not known. Source of reproduction not identified. BNFDEP



Fig. 4:13 Louise Abbéma, Portrait of Sarah Bernhardt, c. 1876, reproduced watercolour, dimensions not known. Source of reproduction not identified. Not located



Fig. 4:16 Anon., 'Mlle Sarah Bernhardt. Encore!', reproduced cartoon drawing, 10.8 x 4 cm. Source of reproduction not identified. Bibliothèque INHA, Paris

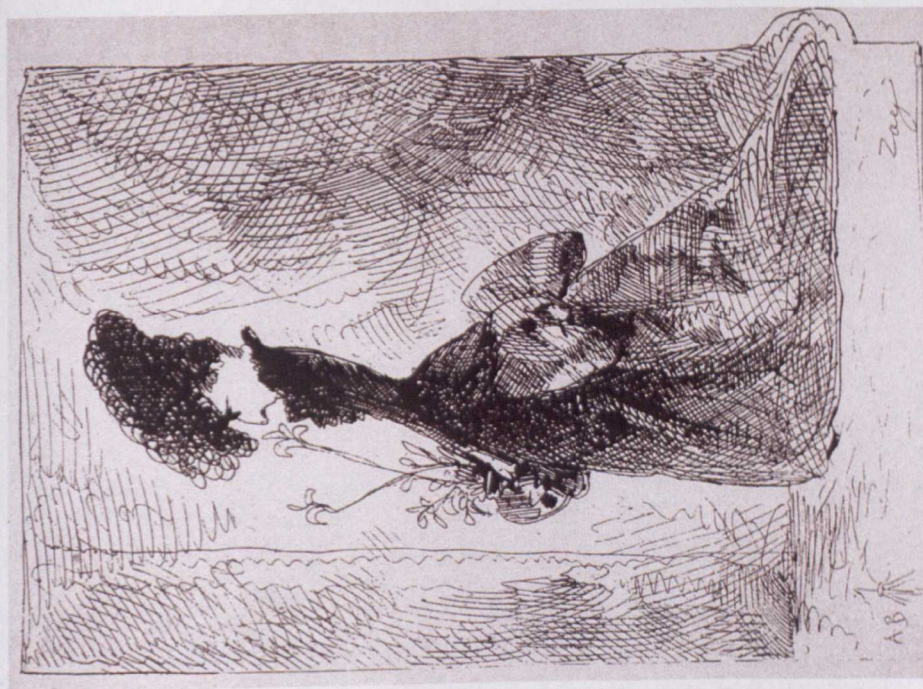


Fig. 4:15 Zag, 'No. 1. La première au catalogue des immémorables SARAH BERNHARDT du Salon: celle-ci par Mlle Abbéma', 1876, reproduced drawing, 20.2 x 13.5 cm. Reproduced in *Zigzags à la plume à travers l'art* (14 May 1876). BNF



Fig. 4: 17 Louise Abbéma, *L'Amazone*, 1880, oil on canvas, 229 x 137. Schlossmuseum, Gotha

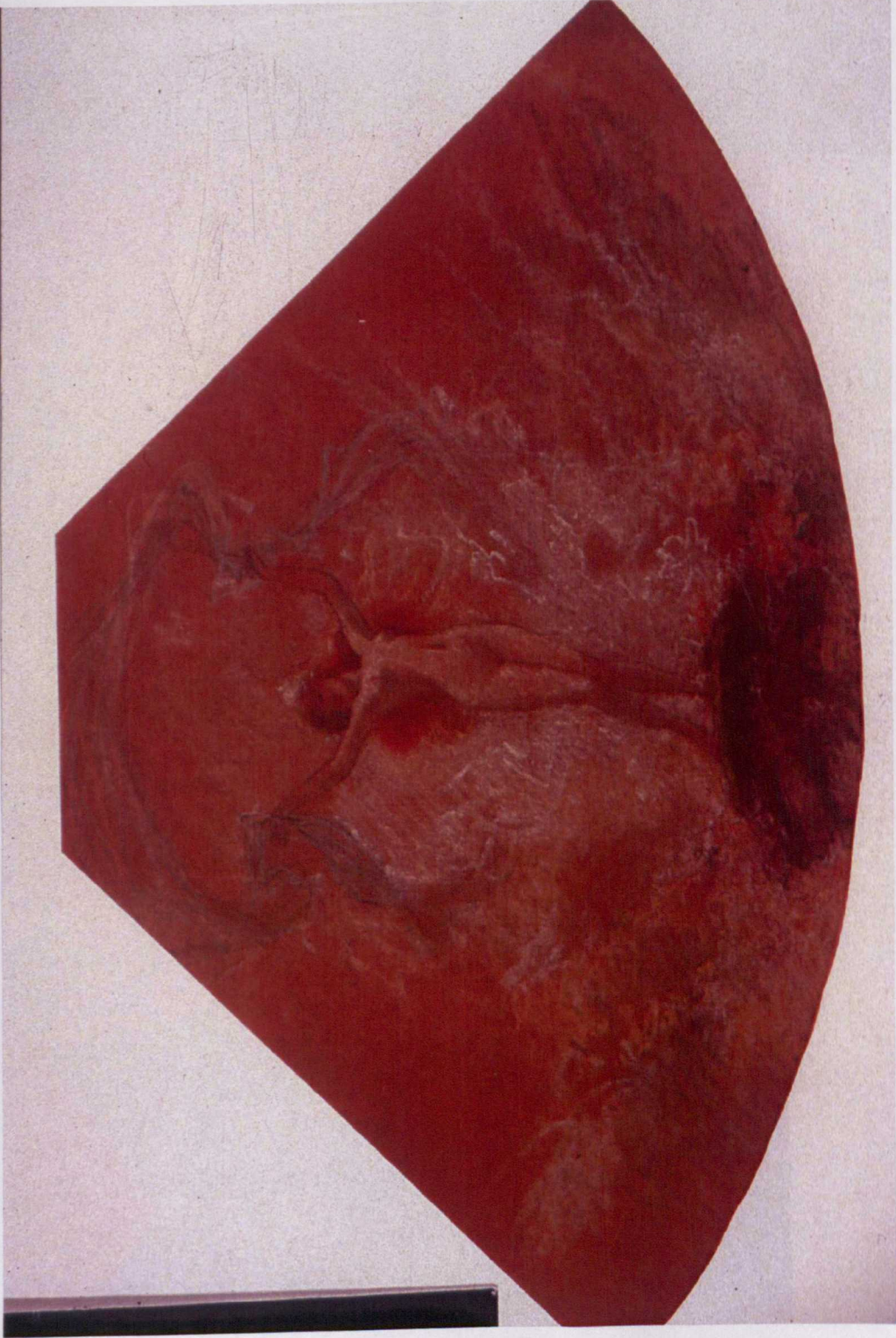


Fig. 4: 18 Louise Abbéma, Sarah Bernhardt nude, n.d., pastel drawing on paper for a fan, dimensions not known. ?Severin Wunderman Museum, Irvine, CA