

COLOUR, PAINT AND GOLD: THE MATERIALITY OF ENGLISH MANUSCRIPT

ILLUMINATION IN THE TWELFTH CENTURY

TWO VOLUMES

VOLUME 2: ILLUSTRATIONS

HAROLD ROBERT STIRRUP

PH. D.

THE UNIVERSITY OF YORK

HISTORY OF ART

JUNE 2012

LIST OF ILLUSTRATION

1. Finger marks, f. 34r Aberdeen Bestiary. Aberdeen University Library MS 24. Aberdeen University Library (The Aberdeen Bestiary Project).
2. Rubbed surface of the Nativity, detail p. 21 St Albans Psalter. Hildesheim, St Godehard's Church MS 1. Dombibliothek Hildesheim (The St Albans Psalter Project).
3. Detail of apostles, p. 38 St Albans Psalter. Hildesheim, St Godehard's Church MS 1. Dombibliothek Hildesheim (The St Albans Psalter Project).
4. Detail of apostles, f. 6v Queen Melisende's Psalter. London, BL Egerton MS 1139. The British Library Board (British Library Digital Database).
5. Artist's studies for historiated Psalm initials, f. 135r Evreux BM MS 4.
6. Monastic artists at work, f. 241v Dover Bible. CCCC MS 4. Parker Library (Parker Library on the Web).
7. Hands and arms, detail, p. 343 St Albans Psalter. Hildesheim, St Godehard's Church MS 1. Dombibliothek Hildesheim (The St Albans Psalter Project); and a more likely alternative arrangement of hands and arms (Author).
8. Crucifixion, f. 52v Arundel 60. London BL Arundel MS 60. The British Library Board (British Library Digital Database).
9. Initial, f. 119v Passionale. London, BL Arundel MS 91. The British Library Board (BL Digital Database).
10. Initial, f. 43v Anselmus. Oxford, Bodleian Library MS Bodley 271. Bodleian Library (Bodleian Library Luna Database).
11. Supper at Emmaus, p. 70 St Albans Psalter. Hildesheim, St Godehard's Church MS 1. Dombibliothek Hildesheim (The St Albans Psalter Project).
12. The Flight into Egypt, p. 29 St Albans Psalter. Hildesheim, St Godehard's Church MS 1. Dombibliothek Hildesheim (The St Albans Psalter Project).
13. Hinguar the Dane, detail f. 10v Life of St Edmund. New York, Morgan Library MS M. 736. The Morgan Library and Museum (Morgan Library).
14. The Presentation, p. 28 St Albans Psalter. Hildesheim, St Godehard's Church MS 1. Dombibliothek Hildesheim (The St Albans Psalter Project).
15. Thief, detail f. 19r Life of St Edmund. New York, Morgan Library MS M. 736. The Morgan Library and Museum (Morgan Library).
16. The Entry into Jerusalem, p. 37 St Albans Psalter. Hildesheim, St Godehard's Church MS 1. Dombibliothek Hildesheim (The St Albans Psalter Project).
17. The Hanged Thieves, f. 19v Life of St Edmund. New York, Morgan Library MS M. 736. The Morgan Library and Museum (Morgan Library).

18. The Murder of Edmund, f. 14v Life of St Edmund. New York, Morgan Library MS M. 736. The Morgan Library and Museum (Morgan Library).
19. Adam and Eve, the Fall, detail p. 17 St Albans Psalter. Hildesheim, St Godehard's Church MS 1. Dombibliothek Hildesheim (The St Albans Psalter Project).
20. The Death of King Sweyn Announced, f. 22r Life of St Edmund. New York, Morgan Library MS M. 736. The Morgan Library and Museum (Morgan Library).
21. Detail of black outline, f. 22r Life of St Edmund. New York, Morgan Library MS M. 736. The Morgan Library and Museum (Morgan Library).
22. Egelwin crossing the Bridge, detail f. 20v Life of St Edmund. New York, Morgan Library MS M. 736. The Morgan Library and Museum (Morgan Library).
23. The Thieves and the Bishop. f. 19r Life of St Edmund. New York, Morgan Library MS M. 736. The Morgan Library and Museum (Morgan Library).
24. Edmund, detail f. 22v Life of St Edmund. New York, Morgan Library MS M. 736. The Morgan Library and Museum (Morgan Library).
25. Christ, detail p. 52 St Albans Psalter. Hildesheim, St Godehard's Church MS 1. Dombibliothek Hildesheim (The St Albans Psalter Project).
26. Christ, detail p. 53 St Albans Psalter. Hildesheim, St Godehard's Church MS 1. Hildesheim (The St Albans Psalter Project).
27. Priest, detail f. 45v Anselm Meditationes. Verdun, B M MS 70. Verdun B.M. (www.enluminures.culture.fr).
28. Blue background, the Fall, detail p. 17 St Albans Psalter. Hildesheim, St Godehard's Church MS 1. Dombibliothek Hildesheim (The St Albans Psalter Project).
29. Purple background, detail p. 51 St Albans Psalter. Hildesheim, St Godehard's Church MS 1. Dombibliothek Hildesheim (The St Albans Psalter Project).
30. Purple background, Magdalen and the Apostles, detail p. 51 St Albans Psalter. Hildesheim, St Godehard's Church MS 1. Dombibliothek Hildesheim (The St Albans Psalter Project).
31. Purple background, the Return, detail p. 31 St Albans Psalter. Hildesheim, St Godehard's Church MS 1. Dombibliothek Hildesheim (The St Albans Psalter Project).
32. Purple background repairs, Deposition, detail p. 47 St Albans Psalter. Hildesheim, St Godehard's Church MS 1. Dombibliothek Hildesheim (The St Albans Psalter Project).
33. Worn blue background, Expulsion, detail p. 18 St Albans Psalter. Hildesheim, St Godehard's Church MS 1. Dombibliothek Hildesheim (The St Albans Psalter Project).

34. Tree shapes, the Fall, detail p. 17 St Albans Psalter. Hildesheim, St Godehard's Church MS 1. Dombibliothek Hildesheim (The St Albans Psalter Project).
35. Worn blue in Annunciation, detail p. 19 St Albans Psalter. Hildesheim, St Godehard's Church MS 1. Dombibliothek Hildesheim (The St Albans Psalter Project).
36. Gold, Visitation, detail p. 20 St Albans Psalter. Hildesheim, St Godehard's Church MS 1. Dombibliothek Hildesheim (The St Albans Psalter Project).
37. Worn blue, the Return, detail p. 31 St Albans Psalter. Hildesheim, St Godehard's Church MS 1. Dombibliothek Hildesheim (The St Albans Psalter Project).
38. Gold, Baptism, detail p. 32 St Albans Psalter. Hildesheim, St Godehard's Church MS 1. Dombibliothek Hildesheim (The St Albans Psalter Project).
39. Decorative initial, f. 101r Anselm Meditationes. Verdun, BM MS 70. Verdun B.M. (www.enluminures.culture.fr).
40. Man and dragon, f. 29v Anselm Meditationes. Verdun, BM MS 70. Verdun B.M. (www.enluminures.culture.fr).
41. Edmund captured, f. 12v Life of St Edmund. New York, Morgan Library MS M. 736. The Morgan Library and Museum (Morgan Library).
42. Man and dragon, detail f. 42v Life of St Edmund. New York, Morgan Library MS M. 736. The Morgan Library and Museum. (Morgan Library).
43. Red dog, f. 15v Life of St Edmund. New York, Morgan Library MS M. 736. The Morgan Library and Museum (Morgan Library).
44. Garment draperies, Moses and Aaron, detail f. 94r Bury Bible. CCCC MS 2. Master and Fellows of Corpus Christi College (Thomson, 2001 pl. 5).
45. Detail, garment draperies, Job's sons, f. 344v Bury Bible. CCCC MS 2. Master and Fellows of Corpus Christi College (Thomson, 2001 pl. 9).
46. Garment draperies, Pentecost miniature, detail f. 79v Cluny Lectionary. Paris, Bibliothèque Nationale, MS nouv. acq. lat. 2246 (Dodwell, 1993 pl. 214).
47. Garment draperies, Communion of the Apostles. Sanctuary apse, Church of Our Lady, Asinou (The Guide to the Church of Our Lady of Asinou p. 14).
48. Garment draperies, Angel, Adoration of the Magi, detail p. 212, Menilogium of Basil II. Rome, Biblioteca Apostolica Vaticana, Vat. gr. 1613. Vatican Library (Demus, 1967 fig. 5).
49. Garment draperies, Transfiguration. Choir vault, Church of St Sophia, Ohrid (Chatzidakis and Grabar, 1965 pl. 30).
50. Green sleeve, detail f. 94r Bury Bible. CCCC MS 2. Master and Fellows of Corpus Christi College (Thomson, 2001 pl. 5).
51. Bear keeper's sleeve, detail f. 220r Bury Bible. CCCC MS 2. Master and Fellows of Corpus Christi College (Thomson, 2001 pl. 23).

52. Job's son's sleeve, detail f. 344v Bury Bible. CCCC MS 2. Master and Fellows of Corpus Christi College (Thomson, 2001 pl. 9).
53. Micah's sleeve, detail f. 328r Bury Bible. CCCC MS 2. Master and Fellows of Corpus Christi College (Thomson, 2001 pl. 36).
54. St Tychikos's sleeve, Sanctuary wall, Church of Our Lady, Asinou (The Guide to the Church of Our Lady of Asinou p. 17).
55. Detail of St Tychikos's sleeve, Sanctuary wall, Church of Our Lady, Asinou (Winfield, 1968 pl. 20b).
56. Apostles' sleeves, Entry into Jerusalem. Nave wall, Church of Our Lady, Asinou (The Guide to the Church of Our Lady of Asinou p. 28).
57. Drapery style, nave wall, Church of St Sophia, Ohrid (<http://www.orthodoxy-icons.com/frescoes/>).
58. Christ's sleeve, Church of Sant' Angelo in Formis (Bologna, 1963 pl. 13).
59. Christ's sleeve, detail, Church of Sant' Angelo in Formis (Bologna, 1963 pl. 13).
60. Blue robes, Christ in Majesty detail f. 281v Bury Bible. CCCC MS 2. Master and Fellows of Corpus Christi College (Thomson, 2001 pl. 8).
61. Detail of figures, James the Monk, Homilies on the Virgin. Rome, Bibliotheca Apostolica Vaticana Cod. MS gr. 1162. Vatican Library (Demus, 1970 pl. II [no foliation given]).
62. Blue garments, Presentation, detail f. 3r Queen Melisende's Psalter. London, BL Egerton MS 1139. The British Library Board (British Library Digital Database).
63. Evangelist figure, detail f. 281v Bury Bible. CCCC MS 2. Master and Fellows of Corpus Christi College (Thomson, 2001 pl. 8).
64. Ezechiel, detail f. 281v Bury Bible. CCCC MS 2. Master and Fellows of Corpus Christi College (Thomson, 2001 pl. 8).
65. Micah, detail f. 328v Bury Bible. CCCC MS 2. Master and Fellows of Corpus Christi College (Thomson, 2001 pl. 36).
66. St Paul and the Viper, Anselm's Chapel, Canterbury Cathedral (Grabar and Nordenfalk 1958 p. 115).
67. St Paul. Nave wall, Church of Our Lady, Asinou (The Guide to the Church of Our Lady of Asinou p. 28).
68. St Paul falling. Nave wall Capella Palatina (<http://www.odysseyadventures.ca/articles/sicily/sicilyRogerII.html>).
69. Traced figures, details f. 70r and f. 94r Bury Bible. CCCC MS 2. Master and Fellows of Corpus Christi College (Thomson, 2001 pls 4 and 5).
70. Hannah reversed, detail f. 147v Bury Bible. CCCC MS 2. Master and Fellows of Corpus Christi College (Thomson, 2001 pl. 6).

71. Amos, detail f. 342r Bury Bible. CCCC MS 2. Master and Fellows of Corpus Christi College (Thomson, 2001 pl. 34).
72. Hannah's worn face and torso and worn blue background, detail f. 147v Bury Bible. CCCC MS 2. Master and Fellows of Corpus Christi College (Thomson, 2001 pl. 6).
73. Worn paint on Hannah's head, Penninah's arm and background, detail f. 147v Bury Bible. CCCC MS 2. Master and Fellows of Corpus Christi College (Thomson, 2001 pl. 6).
74. Possible colour note, detail f. 147v Bury Bible. CCCC MS 2. Master and Fellows of Corpus Christi College (Thomson, 2001 pl. 6).
75. Water damage, revealing grey undercoat Frater Ambrosius initial, detail f. 1v Bury Bible. CCCC MS 2. Master and Fellows of Corpus Christi College (Thomson, 2001 pl. 1).
76. Grey undercoat over green, Morgan Leaf verso, detail. New York, Morgan Library MS M. 619. The Morgan Library and Museum (Morgan Library).
77. Grey undercoat, Samuel's robe, detail f. 93r Souvigny Bible. Moulins, BM MS 1. Moulins B. M. (<http://www.enluminures.culture.fr>).
78. Psalter Leaf, Morgan 724 recto. New York, Morgan Library MS M. 724. The Morgan Library and Museum (Morgan Library).
79. Psalter Leaf, V&A 661 recto. London, V&A MS 661. Victoria and Albert Museum (V&A Images).
80. Psalter Leaf Morgan 724 verso. New York, Morgan Library MS M. 724. The Morgan Library and Museum (Morgan Library).
81. Miniature, f. 125r Gospels of St Augustine CCCC MS 286. Master and Fellows of Corpus Christi College (Parker Library on the Web).
82. Foxes and nesting birds and Christ with Apostles, BL Psalter Leaf verso detail. London, BL Add. MS 37472 (1). The British Library Board (British Library Digital Database).
83. The Visitation, Morgan 724 verso detail. New York, Morgan Library MS M. 724. The Morgan Library and Museum (Morgan Library).
84. Drawing, left-hand attendant at Visitation, Morgan 724 verso (Author).
85. Drawing, right-hand attendant at Visitation, Morgan 724 verso (Author).
86. Nativity and angel, Morgan 724 verso detail. New York, Morgan Library MS M. 724. The Morgan Library and Museum (Morgan Library).
87. Drawing, unpainted angel, Morgan 724 verso (Author).
88. Tree of Jesse figure, Morgan 724 verso detail. New York, Morgan Library MS M. 724. The Morgan Library and Museum (Morgan Library).
89. Drawing, Tree of Jesse figures. Morgan 724 verso (Author).

90. Jews before Herod, BL Psalter Leaf recto detail. London, BL Add. MS 37472 (1). The British Library Board (British Library Digital Database).
91. Crown of Thorns, V&A Psalter Leaf recto detail. London, V&A MS 661. Victoria and Albert Museum (V&A Images).
92. Drawing, priests' robes, V&A Psalter Leaf recto (Author).
93. Initial, f. 205r BL Harley MS 105. London, BL Harley MS 105. The British Library Board (British Library Digital Database).
94. Ruth miniature, detail f. 130r Lambeth Bible. London, Lambeth Palace MS 3. Lambeth Palace Library (Palmer and Brown, 2010 p. 40).
95. Naomi's robe, detail f. 130r Lambeth Bible. London, Lambeth Palace MS 3. Lambeth Palace Library (Palmer and Brown, 2010 p. 40).
96. Amos, detail f. 259v Dover Bible. CCCC MS 3. Master and Fellows of Corpus Christi College (Parker Library on the Web).
97. Angel at the Expulsion, mosaic Capella Palatina (Demus, 1970 fig. 157).
98. Nahum, f. 265r Dover Bible. CCCC MS 3. Master and Fellows of Corpus Christi College (Parker Library on the Web).
99. Zephania, detail f. 266v Dover Bible. MS 3. CCCC MS 3. Master and Fellows of Corpus Christi College (Parker Library on the Web).
100. Kiss of Judas, mosaic Monreale Cathedral, Palermo (Wikipedia.org).
101. Green paint, initial to I Samuel (I Kings), detail f. 117r Dover Bible. CCCC MS 3. Master and Fellows of Corpus Christi College (Parker Library on the Web).
102. Heads, initial to Chronicles, f. 85v Dover Bible. CCCC MS 4. Master and Fellows of Corpus Christi College (Parker Library on the Web).
103. Head, initial to Gospel of St John, detail f. 209 Dover Bible. CCCC MS 4. Master and Fellows of Corpus Christi College (Parker Library on the Web).
104. Paul's cloak, initial to Romans, detail f. 245r Dover Bible. CCCC MS 4. Master and Fellows of Corpus Christi College (Parker Library on the Web).
105. Water stain, initial to Leviticus, detail f. 43v Dover Bible. CCCC MS 3. Master and Fellows of Corpus Christi College (Parker Library on the Web).
106. Solomon's head with pencil-drawn fillets, initial to Song of Songs, detail f. 57r Dover Bible. CCCC MS 4. Master and Fellows of Corpus Christi College. (Parker Library on the Web).
107. Solomon, initial to Song of Songs, detail f. 57r Dover Bible. CCCC MS 4. Master and Fellows of Corpus Christi College (Parker Library on the Web).
108. Reaping, calendar initial for August, detail f. 4v Hunterian Psalter. Glasgow University Library MS Hunter U. 3. 2. (229). University of Glasgow Library (<http://special.lib.gla.ac.uk>).

109. Abraham's grey robe, detail f. 9v Hunterian Psalter. Glasgow University Library MS Hunter U. 3. 2. (229). University of Glasgow Library (<http://special.lib.gla.ac.uk>).
110. Journey of the Magi, f. 10v Copenhagen Psalter. Copenhagen, Royal Library MS Thott 143. 2°. Det Kongelige Bibliotek (<http://www.kb.dk/en/index.html>).
111. Arabesque highlights, Adoration, detail f. 11r Copenhagen Psalter. Copenhagen, Royal Library MS Thott 143. 2°. Det Kongelige Bibliotek (<http://www.kb.dk/en/index.html>).
112. Red under-drawing, Christ's head, detail f. 24r Gough Psalter. Oxford, Bodleian Library MS Gough Liturg. 2. The Bodleian Library (Bodleian Library Luna Database).
113. The Visitation, detail f. 12r Gough Psalter. Oxford, Bodleian Library MS Gough Liturg. 2. The Bodleian Library (Bodleian Library Luna Database).
114. The Flagellation, f. 27r Gough Psalter. Oxford, Bodleian Library MS Gough Liturg. 2. The Bodleian Library (Bodleian Library Luna Database).
115. Ascension, f. 30r Gough Psalter. Oxford, Bodleian Library MS Gough Liturg. 2. The Bodleian Library (Bodleian Library Luna Database).
116. David and Musicians, f. 32r Gough Psalter. Oxford, Bodleian Library MS Gough Liturg. 2. The Bodleian Library (Bodleian Library Luna Database).
117. Musician, detail f. 32v Gough Psalter. Oxford, Bodleian Library MS Gough Liturg. 2. The Bodleian Library (Bodleian Library Luna Database).
118. Juggler, detail f. 32v Gough Psalter. Oxford, Bodleian Library MS Gough Liturg. 2. The Bodleian Library (Bodleian Library Luna Database).
119. Cuthbert preaching, gold panel, f. 22v Life of St Cuthbert. London, BL Yates Thompson MS 26. The British Library Board (British Library Digital Database).
120. Bell ringer, detail f. 32v Gough Psalter. Oxford, Bodleian Library MS Gough Liturg. 2. The Bodleian Library (Bodleian Library Luna Database).
121. Profile heads, detail f. 11r Life of St Cuthbert. London, BL Yates Thompson MS 26. The British Library Board (British Library Digital Database).
122. Profile head, detail f. 61r Life of St Cuthbert. London, BL Yates Thompson MS 26. The British Library Board (British Library Digital Database).
123. Musician, detail f. 32v Gough Psalter. Oxford, Bodleian Library MS Gough Liturg. 2. The Bodleian Library (Bodleian Library Luna Database).
124. Servant, detail f. 54r Life of St Cuthbert. London, BL Yates Thompson MS 26. The British Library Board (British Library Digital Database).
125. Musician with stringed instrument, detail f. 32v Gough Psalter. Oxford, Bodleian Library MS Gough Liturg. 2. The Bodleian Library (Bodleian Library Luna Database).
126. Bishop, detail f. 9r Sermons of Maurice de Sully. Oxford, Bodleian Library MS Douce 270. The Bodleian Library (Bodleian Library Luna Database).

127. Last Supper, f. 11r Douce 293. Oxford, Bodleian Library MS Douce 293. The Bodleian Library (Bodleian Library Luna Database).
128. Holy Women at the Tomb, f. 13r Shaftesbury Psalter. London, BL Landsdowne MS 383. The British Library Board (British Library Digital Database).
129. Job initial, f. 304r Auct. Bible. Oxford, Bodleian Library MS Auct. E. infra 1. The Bodleian Library (Bodleian Library Luna Database).
130. Hosea initial, f. 274v Auct. Bible. Oxford, Bodleian Library MS Auct. E. infra 1. The Bodleian Library (Bodleian Library Luna Database).
131. Beatus initial f. 2r. Auct. Bible. Oxford, Bodleian Library MS Auct. E. infra 2. The Bodleian Library (Bodleian Library Luna Database).
132. Psalm initials, f. 44r Auct. Bible. Oxford, Bodleian Library MS Auct. E. infra 2. The Bodleian Library (Bodleian Library Luna Database).
133. Morgan Leaf, recto. New York, Morgan Library MS M. 619. The Morgan Library and Museum (Donovan, 1993 fig. 27).
134. Green paint, Hannah and Eli, Morgan Leaf recto detail. New York, Morgan Library MS M. 619. The Morgan Library and Museum (Morgan Library).
135. Samuel's tunics, Morgan Leaf recto detail. New York, Morgan Library MS M. 619. The Morgan Library and Museum (Morgan Library).
136. King Antiochus, unfinished frontispiece to Maccabees, detail f. 350v Winchester Bible. Winchester Cathedral Library MS 17. The Dean and Chapter of Winchester (Donovan, 1993 fig. 71).
137. Two figures, Ezra initial, detail f. 342r Winchester Bible. Winchester Cathedral Library MS 17. The Dean and Chapter of Winchester (Donovan, 1993 fig. 71).
138. Figure by Apocrypha Master, detail f. 12r Bodleian Comedies of Terence. Oxford, Bodleian Library MS Auct. F. 2. 13. The Bodleian Library (Bodleian Library Luna Database).
139. Figure by Apocrypha Master, detail f. 13v Bodleian Comedies of Terence. Oxford, Bodleian Library MS Auct. F. 2. 13. The Bodleian Library (Bodleian Library Luna Database).
140. Unpainted figure by Master of the Leaping Figures, initial to Epistle to Philimon, f. 459r Winchester Bible. Winchester Cathedral Library MS 17. The Dean and Chapter of Winchester (Oakeshott, 1945 pl. X).
141. Figure of Egyptian, Exodus initial, detail f. 21v Winchester Bible. Winchester Cathedral Library MS 17. The Dean and Chapter of Winchester (Donovan, 1993 fig. 17).
142. Morgan Leaf, verso. New York, Morgan Library MS M. 619. The Morgan Library and Museum (Donovan, 1993 fig. 27).
143. Grey undercoat over green, Morgan Leaf verso detail. New York, Morgan Library MS M. 619. The Morgan Library and Museum (Morgan Library).

144. Red under gold, detail f. 70r Bury Bible. CCCC MS 2. Master and Fellows of Corpus Christi College (Parker Library on the Web).
145. Red under gold, detail f. 134v Dover Bible. CCCC MS 2. Master and Fellows of Corpus Christi College (Parker Library on the Web).
146. Red outline and glue, Flagellation, detail p. 44 St Albans Psalter. Hildesheim, St Godehard's Church MS 1. Dombibliothek Hildesheim (The St Albans Psalter Project).
147. Glue layer, detail f. 158r Lambeth Bible. London, Lambeth Palace MS 3. Lambeth Palace Library (Shepard, 2007 pl. 13).
148. Christ's golden robe, Entry into Jerusalem, detail p. 37 St Albans Psalter. Hildesheim, St Godehard's Church MS 1. Dombibliothek Hildesheim (The St Albans Psalter Project).
149. Gold in Psalm heading, detail f. 93v Vespasian Psalter. London, BL Cotton MS Vespasian A. I. The British Library Board (McKendrick and Doyle, 2007 pl. 16, p. 29).
150. Painted gold, St Ætheldryth, detail f. 90v Benedictional of St Æthelwold. London, BL Add. MS 49598. The British Library Board (<http://www.asnc.cam.ac.uk/resources/facsimiles.htm>).
151. David's golden tunic, detail f. 93 Eadui Psalter. London, BL Arundel MS 155. The British Library Board (British Library Digital Database).
152. Benedict's golden robes, detail f. 133r Eadui Psalter. London, BL Arundel MS 155. The British Library Board (British Library Digital Database).
153. Robes, Jeremiah initial by the Leaping Figures Master, detail f. 148r Winchester Bible. Winchester Cathedral Library MS 17. The Dean and Chapter of Winchester (<http://winchester-cathedral.org.uk/>).
154. Micah's robes, by the Genesis Master, over a design by the Apocrypha Master, detail f. 204v Winchester Bible. Winchester Cathedral Library MS 17. The Dean and Chapter of Winchester (<http://winchester-cathedral.org.uk/>).
155. Gold show-through, Ps. 86 initial, p. 245 St Albans Psalter. Hildesheim, St Godehard's Church MS 1. Dombibliothek Hildesheim (The St Albans Psalter Project).
156. Gold leaf pieces, Ps. 112, detail p. 303 St Albans Psalter. Hildesheim, St Godehard's Church MS 1. Dombibliothek Hildesheim (The St Albans Psalter Project).
157. Gold leaf pieces, Ps. 108, detail p. 296 St Albans Psalter. Hildesheim, St Godehard's Church MS 1. Dombibliothek Hildesheim (The St Albans Psalter Project).
158. Gold, Ps. 54, detail p. 177 St Albans Psalter. Hildesheim, St Godehard's Church MS 1. Dombibliothek Hildesheim (The St Albans Psalter Project).

159. Gold leaf pieces, Second Temptation, detail p. 34 St Albans Psalter. Hildesheim, St Godehard's Church MS 1. Dombibliothek Hildesheim (The St Albans Psalter Project).
160. Gold leaf pieces, Washing of the Feet detail, p. 38 St Albans Psalter. Hildesheim, St Godehard's Church MS 1. Dombibliothek Hildesheim (The St Albans Psalter Project).
161. Gold leaf pieces, Entombment, detail p. 48 St Albans Psalter. Hildesheim, St Godehard's Church MS 1. Dombibliothek Hildesheim (The St Albans Psalter Project).
162. Gold leaf pieces, Agony in the Garden, detail p. 39 upper, St Albans Psalter. Hildesheim, St Godehard's Church MS 1. Dombibliothek Hildesheim (The St Albans Psalter Project).
163. Gold leaf pieces, Agony in the Garden, detail p. 39 lower, Albans Psalter. Hildesheim, St Godehard's Church MS 1. Dombibliothek Hildesheim (The St Albans Psalter Project).
164. Gold leaf pieces, Genesis initial, detail f. 6v Lambeth Bible. London, Lambeth Palace MS 3. Lambeth Palace Library (Shepard, 2007 pl. 2).
165. Missing gold leaf, Daniel miniature, detail f. 285v Lambeth Bible. London, Lambeth Palace MS 3. Lambeth Palace Library (Shepard, 2007 pl. 14).
166. Gold leaf on unfinished initial to Joshua, f. 104 Auct Bible. Oxford, Bodleian Library MS Auct. E. infra 1. The Bodleian Library (Bodleian Library Luna Database).
167. Crackled gold leaf, Job initial, detail f. 292v Auct. Bible. Oxford, Bodleian Library MS Auct. E. infra 1. The Bodleian Library (Bodleian Library Luna Database).
168. Psalm initials, f. 51r Auct. Bible. Oxford, Bodleian Library MS Auct. E. infra 2. The Bodleian Library (Bodleian Library Luna Database).
169. Tinted gold, initial to Exodus, f. 18r Abbot Simon's Bible. CCCC MS 48. Master and Fellows of Corpus Christi College (Parker Library on the Web).
170. Tinted gold, initial to Paul's Letter to Ephesians, f. 258v Abbot Simon's Bible. CCCC MS 48. Master and Fellows of Corpus Christi College (Parker Library on the Web).
171. Gold and black, initial to Jerome's prologue, f. 242v Abbot Simon's Bible. CCCC MS 48. Master and Fellows of Corpus Christi College (Parker Library on the Web).
172. Gold leaf, initial to Galatians, detail f. 260r Dover Bible. CCCC MS 4. Master and Fellows of Corpus Christi College (Parker Library on the Web).
173. Gold leaf pieces, initial to Galatians, detail f. 260r Dover Bible. CCCC MS 4. Master and Fellows of Corpus Christi College (Parker Library on the Web).
174. Gold leaf pieces, initial to Galatians, detail f. 260r Dover Bible. CCCC MS 4. Master and Fellows of Corpus Christi College (Parker Library on the Web).

175. Gold decorated with black, initial to II Chronicles, f. 97v Dover Bible. CCCC MS 4. Master and Fellows of Corpus Christi College (Parker Library on the Web).
176. Gold decorated with black, initial to capitula, f. 242v Dover Bible. CCCC MS 4. Master and Fellows of Corpus Christi College (Parker Library on the Web).
177. Piece of gold leaf, initial to Deuteronomy, detail f. 64v Laud Bible. Oxford, Bodleian Library MS Laud Misc. 752. The Bodleian Library (Bodleian Library Luna Database).
178. Psalm initial, p. 254. St Albans Psalter. Hildesheim, St Godehard's Church MS 1. Dombibliothek Hildesheim (The St Albans Psalter Project).
179. Show-through of colours and gold on p. 253 St Albans Psalter. Hildesheim, St Godehard's Church MS 1. Dombibliothek Hildesheim (The St Albans Psalter Project).
180. Gold panels, initial to Hosea, f. 318r Bury Bible. CCCC MS 2. Parker Library (Thomson, 2001 pl. 32).
181. Gold background, St John, Avesnes Leaf. Avesne-sur-Helpe, Musée de la Société archéologique, the Avesnes Leaves (A World History of Art at <http://all-art.org/>).
182. Gold background, detail f. 117r Pericopes Book of Henry II. Munich, Bayerische Staatsbibliothek, MS Clm. 4452. Bayerische Staatsbibliothek (Wikipedia).
183. Gold background, Adoration of the Magi, detail f. 8r Gospel Lectionary. New York, Morgan Library MS G. 44. The Morgan Library and Museum (Morgan Library).
184. Gold background, Entry into Jerusalem, detail f. 26r Gospel Lectionary. New York, Morgan Library MS M. 780. The Morgan Library and Museum (Morgan Library).
185. Gold background, St Luke, f. 76v Greek New Testament. London, BL Add. MS 28815. The British Library Board (Reeve, 2007 p. 36).
186. Gold background, f. 9v Queen Melisende's Psalter. London, BL Egerton MS 1139. The British Library Board (British Library Digital Database).
187. Gold background, Four Evangelists, f. 3v Latin Gospels. Rome, Biblioteca Apostolica Vaticana, Vat. lat. MS 5974. Vatican Library (Folda, 2008 fig. 37).
188. Gold background in Ruth miniature, detail f. 130r Lambeth Bible. London, Lambeth Palace MS 3. Lambeth Palace Library (Palmer and Brown, 2010 p. 40).
189. Gold background, initial to Ephesians, detail f. 262v Dover Bible. CCCC MS 4. Master and Fellows of Corpus Christi College (Parker Library on the Web).
190. Incised gold background, St Matthew, f. 11v Greek Gospels. Modena, Biblioteca Estense Cod. Gr. 1. Modena, Biblioteca Estense (Wikimedia Commons).

191. Incised gold background, St Matthew, detail f. 30v Greek Gospels. Oxford, Bodleian Library MS Cromwell 16. The Bodleian Library (Bodleian Library Luna Database).
192. Incised gold background, St John, detail f. 205r Greek Gospels. Rome, Biblioteca Apostolica Vaticana, Vat. gr. 364. Vatican Library (www.vatican.va/exhibits).
193. Patterns and colour, Job initial, detail f. 304r Auct. Bible. Oxford, Bodleian Library MS Auct. E. infra 1. The Bodleian Library (Bodleian Library Luna Database).
194. Drawing of some pen-drawn motifs in Auct. Bible vol. 1 (Author).
195. Gold form of Hosea initial, detail f. 274v Auct. Bible. Oxford, Bodleian Library MS Auct. E. infra 1. The Bodleian Library (Bodleian Library Luna Database).
196. Drawing of incised motifs on Hosea initial, Auct. Bible vol. 1 (Author).
197. Gold form of Daniel initial, detail f. 264r Auct Bible. Oxford, Bodleian Library MS Auct. E. infra 1. The Bodleian Library (Bodleian Library Luna Database).
198. Drawing of incised motifs on Daniel initial, Auct. Bible vol. 1 (Author).
199. Gold form of initial 'H' to Job, f. 292v Auct Bible. Oxford, Bodleian Library MS Auct. E. infra 1. The Bodleian Library (Bodleian Library Luna Database).
200. Drawing of incised motifs on gold of Job initial, Auct. Bible vol. 1 (Author).
201. Drawing, of various ring, dot and cross motifs in gold of Auct. Bible vol. 1 (Author).
202. Drawing of various motifs in gold of Auct. Bible vol. 1 (Author).
203. Iona spoon, detail. National Museum of Antiquities, Edinburgh (Stratford, 1986 pl. XIIIb).
204. Drawing of diaper strip in Haggai initial, f. 287r Auct. Bible (Author).
205. Drawing of diaper strips in Zachariah initial, f. 288r Auct. Bible (Author).
206. Gold form of Haggai initial f. 287r Auct. Bible. Oxford, Bodleian Library MS Auct. E. infra 1. The Bodleian Library (Bodleian Library Luna Database).
207. Diaper strip on initial to II Samuel (II Kings) initial, detail f. 149r Auct. Bible. Oxford, Bodleian Library MS Auct. E. infra 1. The Bodleian Library (Bodleian Library Luna Database).
208. Drawing of diaper patterns on initial to II Samuel (II Kings), f. 149r Auct. Bible (Author).
209. Diaper strip on initial to Esther, detail f. 124r Dover Bible. Dover Bible. Cambridge, Corpus Christi College MS 4. Master and Fellows of Corpus Christi College (Parker Library on the Web).
210. English nielloed silver flask. St-Maurice d' Agaune (Stratford, 1986 pl. XIVb).

211. English nielloed silver flask, detail. St-Maurice d' Agaune (Stratford, 1986 pl. XIVa).
212. Drawing of incised dots on gold, initial to I Kings (III Kings), f. 165r Lambeth Bible (Author).
213. Drawing of incised dots on gold, initial to Isaiah, f. 198v Lambeth Bible (Author).
214. Incised gold, initial to Zephaniah, f. 266v Dover Bible. CCCC MS 4. Master and Fellows of Corpus Christi College (Parker Library on the Web).
215. Drawing of incised gold, Zephaniah initial f. 266v Dover Bible (Author).
216. Incised gold roundel initial to Nahum, detail f. 265r Dover Bible. CCCC MS 3. Master and Fellows of Corpus Christi College (Parker Library on the Web).
217. Incised gold, Micah initial, f. 263r Dover Bible. CCCC MS 3. Master and Fellows of Corpus Christi College (Parker Library on the Web).
218. Drawing of incised gold, Micah initial f. 263r Dover Bible (Author).
219. Archbishop Hubert Walter's chalice. Canterbury Cathedral Treasury (Stratford, 1982 pl. XXIVA).
220. Detail of incised crosshatched triangles on the foot of Archbishop Hubert Walter's chalice. Canterbury Cathedral Treasury (Stratford, 1982 pl. XXVA).
221. Rotated detail of initial to II Chronicles, f. 97v Dover Bible. CCCC MS 4. Master and Fellows of Corpus Christi College (Parker Library on the Web).
222. Detail of silver drinking cup, with niello decoration. Metropolitan Museum of Art. (metmuseum.org).
223. Gold, Judith initial, detail f. 134r Dover Bible. CCCC MS 4. Master and Fellows of Corpus Christi College (Parker Library on the Web).
224. Drawing, Judith initial f. 134r. Dover Bible (Author).
225. Gesso and gold, initial, detail f. 3v Hunterian Psalter. Glasgow University Library MS Hunter U. 3. 2. (229). University of Glasgow Library (<http://special.lib.gla.ac.uk>).
226. Gesso and gold, roundel, detail f. 3v Hunterian Psalter. Glasgow University Library MS Hunter U. 3. 2. (229). University of Glasgow Library (<http://special.lib.gla.ac.uk>).
227. Drawing, incised patterns on gold backgrounds, Hunterian Psalter (Author).
228. Drawing, incised patterns on gold backgrounds, Hunterian Psalter (Author).
229. Damaged incised diaper pattern, Isaac miniature, detail f. 9v Hunterian Psalter. Glasgow University Library MS Hunter U. 3. 2. (229). University of Glasgow Library (<http://special.lib.gla.ac.uk>).
230. Drawing, incised patterns on gold of Psalm initials, Hunterian Psalter (Author).

231. Gold in Psalm initial, f. 449v Hunterian Psalter. Glasgow University Library MS Hunter U. 3. 2. (229). University of Glasgow Library (<http://special.lib.gla.ac.uk>).
232. Incised gold pattern, author portrait, f. 1r Peter Lombard Sentences. Troyes, Bibliothèque Municipale, MS 900 (<http://www.enluminures.culture.fr>).
233. Drawing, incised patterns in gold, f. 1r Peter Lombard Sentences (Author).
234. Drawing incised patterns, Beatus initial, f. 17r Copenhagen Psalter (Author).
235. Drawing, incised marks in gold, Beatus initial, f. 33v Gough Psalter (Author).
236. Gold leaf and green cross, Genesis initial, detail f. 5r Winchester Bible. Winchester Bible. Winchester Cathedral Library MS 17. The Dean and Chapter of Winchester (<http://winchester-cathedral.org.uk/>).
237. Gold, Adam and Eve, detail f. 7v Hunterian Psalter. Glasgow University Library MS Hunter U. 3. 2. (229). University of Glasgow Library (<http://special.lib.gla.ac.uk>).
238. Baptism f. 5r from detached miniature cycle, MS M. 44. New York, Morgan Library MS M. 44. The Morgan Library and Museum (Morgan Library).
239. Detail, doubled vellum, p. 2 Imago Mundi. CCCC MS 66. Master and Fellows of Corpus Christi College (Parker Library on the Web).
240. Opening of St Matthew's Gospel, f. 16r Trier Gospels (Gospels of Otto III). Manchester, John Rylands Library MS lat. 98. University of Manchester (Alexander, 1978 pl. 12).
241. St Luke, f. 37v Mostyn Gospels. New York, Morgan Library MS M. 777. The Morgan Library and Museum (Morgan Library).
242. Patched initial, Jerome's prologue f. 5v Bury Bible. CCCC MS 2. Master and Fellows of Corpus Christi College (Thomson, 2001 pl. 10).
243. Initial to Ezra, f. 131v Morgan Lothian Bible. New York, Morgan Library MS M. 791. The Morgan Library and Museum (Morgan Library).
244. Patched miniature, f. 9r Life of St Cuthbert. London, BL Yates Thompson MS 26. The British Library Board (British Library Digital Database).
245. Genesis initial, f. 7v Abbot Simon's Bible. CCCC MS 48. Master and Fellows of Corpus Christi College (Parker Library on the Web).
246. Genesis initial, detail f. 7v, and show-through on f. 7r, detail. Abbot Simon's Bible. CCCC MS 48. Master and Fellows of Corpus Christi College (Parker Library on the Web).
247. Silk curtain raised, initial 'H', Assumption of the Virgin, f. 112v Morgan Gradual and Sacramentary. New York, Morgan Library MS M. 711. The Morgan Library and Museum (Morgan Library).
248. Corrector's inserted verse, detail p. 97, Tours Bible. St Gallen, Stiftsbibliothek, Cod. Sang. 75. St Gallen, Stiftsbibliothek (<http://www.e-codices.unifr.ch/>).

249. Correction, detail p. 168, Tours Bible. St Gallen, Stiftsbibliothek, Cod. Sang. 77. St Gallen, Stiftsbibliothek (<http://www.e-codices.unifr.ch/>).
250. Garment colours, Thomas miniature p. 52 St Albans Psalter. Hildesheim, St Godehard's Church MS 1. Dombibliothek Hildesheim (The St Albans Psalter Project).
251. Red and green garments, mosaic, San Vitale (Grabar, 1953 p. 63).
252. Portrait of Justinian, mosaic, San Vitale (Grabar, 1953 p. 66).
253. Interior Mausoleum of Galla Placidia, Ravenna (<http://mybyzantine.wordpress.com/>).
254. Herod's robe, detail p. 23 St Albans Psalter. Hildesheim, St Godehard's Church MS 1. Dombibliothek Hildesheim (The St Albans Psalter Project).
255. Apostle's robe, detail p. 52 St Albans Psalter. Hildesheim, St Godehard's Church MS 1. Dombibliothek Hildesheim (The St Albans Psalter Project).
256. Coronation colours, detail f. 8v Life of St Edmund. New York, Morgan Library MS M. 736. The Morgan Library and Museum (Morgan Library).
257. Silk tunic, detail f. 12v Life of St Edmund. New York, Morgan Library MS M. 736. The Morgan Library and Museum (Morgan Library).
258. Solomon's silk tunic, detail f. 57r Dover Bible. CCC MS 4. Master and Fellows of Corpus Christi College (Parker Library on the Web).
259. St Luke's silk robe, detail f. 193r Dover Bible. CCC MS 4. Master and Fellows of Corpus Christi College (Parker Library on the Web).
260. Byzantine angel's robe, detail f. 12v Sermons of St John Chrysostom. Paris, Bibliothèque Nationale MS Coislin 79 (Wikimedia Commons).
261. The finding of Edmund's body, detail f. 15r, Life of St Edmund. New York, Morgan Library MS M. 736. The Morgan Library and Museum (Morgan Library).
262. Moses, detail f. 94r Bury Bible. CCC MS 2. Master and Fellows of Corpus Christi College (Parker Library on the Web).
263. Ruth gleaning, detail f. 130r, Lambeth Bible. London, Lambeth Palace MS 3. Lambeth Palace Library (Grabar and Nordenfalk, 1958 p. 168).
264. The Descent from the Cross, p. 47 St Albans Psalter. Hildesheim, St Godehard's Church MS 1. Dombibliothek Hildesheim (The St Albans Psalter Project).
265. Magdalen opening, pp. 50 and 51 St Albans Psalter. Hildesheim, St Godehard's Church MS 1. Dombibliothek Hildesheim (The St Albans Psalter Project).
266. St Martin's cloak, p. 53 St Albans Psalter. Hildesheim, St Godehard's Church MS 1. Dombibliothek Hildesheim (The St Albans Psalter Project).

267. Alexis drawing and coloured text, p. 57 St Albans Psalter. Hildesheim, St Godehard's Church MS 1. Dombibliothek Hildesheim (The St Albans Psalter Project).
268. Magi opening, pp. 24 and 25 St Albans Psalter. Hildesheim, St Godehard's Church MS 1. Dombibliothek Hildesheim (The St Albans Psalter Project).
269. Danish messenger, detail f. 10v Life of St Edmund. New York, Morgan Library MS M. 736. The Morgan Library and Museum (Morgan Library).
270. Danish messenger, detail f. 11r Life of St Edmund. New York, Morgan Library MS M. 736. The Morgan Library and Museum (Morgan Library).
271. Danish messenger, detail f. 11v Life of St Edmund. New York, Morgan Library MS M. 736. The Morgan Library and Museum (Morgan Library).
272. Ascension of Christ, detail p. 54 St Albans Psalter. Hildesheim, St Godehard's Church MS 1. Dombibliothek Hildesheim (The St Albans Psalter Project).
273. Three apostles, detail f. 4r Benedictional of St Æthelwold. London, BL Add. MS 49598. The British Library Board (Wormald, 1959 pl. 2)
274. Three martyred saints, f. 119v Passionale, Arundel 91. London, BL MS Arundel 91. The British Library Board (British Library Digital Database).
275. Assumption of the Virgin, f. 75v Sacramentary M. 641. New York, Morgan Library MS M. 641. The Morgan Library and Museum (Morgan Library).
276. Ascension of Christ, f. 48r Lectionary M. 780. New York, Morgan Library MS M. 780. The Morgan Library and Museum (Morgan Library).
277. Ascension of Christ, f. 33v Gospel Lectionary Egerton 809. London, BL Egerton MS 809. The British Library Board (British Library Digital Database).
278. Apostles' tunics, Transfiguration, Choir vault, Church of St Sophia, Ohrid (Chatzidakis and Grabar, 1965 pl. 30).
279. Blue tunics, detail f. 6v Queen Melisende's Psalter. London, BL Egerton MS 1139. The British Library Board (British Library Digital Database).
280. St John dictating, f. 178v Codex Ebneranius. Oxford, Bodleian Library MS Auct. T. infra 1.10. Bodleian Library (Bodleian Library Luna Database).
281. White tunics, nave mosaics Sant' Appolinare Nuovo (<http://mybyzantine.wordpress.com/>)
282. Christ and the centurion, detail f. 22r Codex Egberti. Trier, Stadtbibliothek, cod. 24. Der Stadtbibliothek Trier (Wikimedia Commons)
283. Christ hands the keys to Peter, detail f. 152 Pericopes Book of Henry II. Munich, Bayerische Staatsbibliothek, MS Clm. 4452. Bayerische Staatsbibliothek (<http://www.mcah.columbia.edu/>)
284. Harrowing of Hell, detail p. 49 St Albans Psalter. Hildesheim, St Godehard's Church MS 1. Dombibliothek Hildesheim (The St Albans Psalter Project).

285. Christ and Peter, detail f. 68v Anselm Meditationes. Verdun, BM MS 70. Verdun B.M. (<http://www.enluminures.culture.fr/>).
286. Christ in House of Simon, detail p. 36 St Albans Psalter. Hildesheim, St Godehard's Church MS 1. Dombibliothek Hildesheim (The St Albans Psalter Project).
287. Pilate and the Jews, detail p. 45 St Albans Psalter. Hildesheim, St Godehard's Church MS 1. Dombibliothek Hildesheim (The St Albans Psalter Project).
288. Ascension, f. 13v. Shaftesbury Psalter. London, BL Lansdowne MS 383. The British Library Board (British Library Digital Database).
289. Christ, detail f. 281v Bury Bible. CCCC MS 2. Master and Fellows of Corpus Christi College (Thomson, 2001 pl. 8).
290. Sponsa et Sponsus, f. 270v Winchester Bible. Winchester Cathedral Library MS 17. The Dean and Chapter of Winchester (<http://winchester-cathedral.org.uk/>).
291. Hosea initial, f. 198r Winchester Bible. Winchester Cathedral Library MS 17. The Dean and Chapter of Winchester (<http://winchester-cathedral.org.uk/>).
292. Samuel and David, Morgan Leaf, verso detail. New York, Morgan Library MS M. 619. The Morgan Library and Museum (Morgan Library).
293. Ezechiel initial, f. 258v Lambeth Bible. London, Lambeth Palace MS 3. Lambeth Palace Library (Shepard, 2007 pl. 12).
294. Isaiah initial, detail f. 173v Dover Bible. CCCC MS 3. Master and Fellows of Corpus Christi College (Parker Library on the Web).
295. Tunics in initial, detail f. 186v Bodleian Anselm. Oxford, Bodleian Library MS Auct. D. 2. 6. Bodleian Library (Bodleian Library Luna Database).
296. Christ and apostles. Sanctuary apse, Church of Our Lady, Asinou (The Guide to the Church of Our Lady of Asinou p. 14).
297. Blue panels, detail of ceiling of St Michael's Church, Hildesheim (Michaelisgemeinde Hildesheim).
298. Adam and Eve, red panel, detail of ceiling of St Michael's Church, Hildesheim (Michaelisgemeinde Hildesheim).
299. Psalm 105 initial, p. 205 St Albans Psalter. Hildesheim, St Godehard's Church MS 1. Dombibliothek Hildesheim (The St Albans Psalter Project).
300. Daniel miniature, f. 285v Lambeth Bible. London, Lambeth Palace MS 3. Lambeth Palace Library (Shepard, 2007 pl. 14).
301. Red hats, Entombment, detail p. 48 St Albans Psalter. Hildesheim, St Godehard's Church MS 1. Dombibliothek Hildesheim (The St Albans Psalter Project).
302. Saxon leaders, detail f. 8r Life of St Edmund. New York, Morgan Library MS M. 736. The Morgan Library and Museum (Morgan Library).

303. Edmund and archers, detail f. 14r Life of St Edmund. New York, Morgan Library MS M. 736. The Morgan Library and Museum (Morgan Library).
304. Edmund beheaded, detail f. 14v Life of St Edmund. New York, Morgan Library MS M. 736. The Morgan Library and Museum (Morgan Library).
305. Satan's red panel, detail f. 11v Hunterian Psalter. Glasgow University Library MS Hunter U. 3. 2. (229). University of Glasgow Library (<http://special.lib.gla.ac.uk/>).
306. Satan's red panel, f. 22r Gough Psalter. Oxford, Bodleian Library MS Gough Liturg. 2. The Bodleian Library (Bodleian Library Luna Database).
307. Satan's red panel, First temptation of Christ, French glass *c.* 1179-80, from Troyes Cathedral. Victoria and Albert Museum (V&A Images).
308. Satan's red panel, Second Temptation of Christ, French glass *c.* 1179-80, from Troyes Cathedral. Victoria and Albert Museum (V&A Images).
309. Scarlet cords, p. 209, detail of Ps. 106 initial, St Albans Psalter. Hildesheim, St Godehard's Church MS 1. Dombibliothek Hildesheim (The St Albans Psalter Project).
310. Rahab in red, detail f. 287v Codex Ebnerianus. Oxford, Bodleian Library MS Auct. T. infra 1.10. The Bodleian Library (Bodleian Library Luna Database).
311. St Martin's bed cover, detail p. 53 St Albans Psalter. Hildesheim, St Godehard's Church MS 1. Dombibliothek Hildesheim (The St Albans Psalter Project).
312. Edmund gives alms to the poor, detail f. 9r Life of St Edmund. New York, Morgan Library MS M. 736. The Morgan Library and Museum (Morgan Library).
313. Edmund's corpse, the red line, detail f. 17v Life of St Edmund. New York, Morgan Library MS M. 736. The Morgan Library and Museum (Morgan Library).
314. Abraham and the angels, nave mosaic Santa Maria Maggiore, Rome (Grabar and Nordenfalk, 1957 p. 37).
315. Figures in white, nave mosaic Sant' Appolinare Nuovo, Ravenna (<http://mybyzantine.wordpress.com/>).
316. Figures in white, nave mosaic Sant' Appolinare Nuovo, Ravenna (Grabar, 1953 p. 55).
317. Christ and angels, apse mosaic San Vitale, Ravenna, (<http://mybyzantine.wordpress.com/>).
318. Author portrait, detail f. 3v Roman Virgil. Rome, Bibliotheca Apostolica Vaticana Vat. lat. 3867. Vatican Library (Wright, 2001 p. 16).
319. White garments of Aaron and Moses at the Tabernacle, detail f. 76r Ashburnham Pentateuch. Paris, Bibliothèque Nationale, MS nouv. acq. lat. 2334. Bibliothèque nationale de France (Weitzmann, 1977 pl. 47).

320. St John, f. 178r, Vienna Coronation Gospels. Vienna Kunsthistorisches Museum, Schatzkammer inv. XIII 18 (Wikimedia Commons).
321. St Luke, detail f. 129v Gospels of St Augustine. CCCC MS 286. Master and Fellows of Corpus Christi College (Parker Library on the Web).
322. Uniformed angels, detail f. 2v Charter of the 11. London, BL Cotton MS Vespasian A. VIII. The British Library Board (Wikimedia Commons).
323. Uniformed angels, detail f. 4r Benedictional of St Æthelwold. London, BL Add. MS 49598. The British Library Board (Wormald, 1959 pl. 2).
324. St Martin's cloak, detail p. 53 St Albans Psalter. Hildesheim, St Godehard's Church MS 1. Dombibliothek Hildesheim (The St Albans Psalter Project).
325. Garment of linen, detail f. 258r Lambeth Bible. London, Lambeth Palace MS 3. Lambeth Palace Library (Shepard, 2007, pl. 13).
326. Tree of Jesse, f. 7v Capuchins' Bible. Paris, Bibliothèque Nationale MS lat. 16476. Bibliothèque nationale de France (<http://pastorpilgrim.wordpress.com/>).
327. Edmund crowned in Heaven, f. 22v Life of St Edmund. New York, Morgan Library MS M. 736. The Morgan Library and Museum (Morgan Library).
328. Samuel and Saul, Morgan Leaf recto detail. New York, Morgan Library MS M. 619. The Morgan Library and Museum (Morgan Library).
329. Initials to Psalm 51, f. 23r Auct Bible. Oxford, Bodleian Library MS Auct. E. infra 2. The Bodleian Library (Bodleian Library Luna Database).
330. Repoussé diaper pattern on gold of Psalm initial, f 23r Auct Bible. Oxford, Bodleian Library MS Auct. E. infra 2. The Bodleian Library (Bodleian Library Luna Database).
331. Empress Gisela's coronation eagle brooch *c.* 1025. Mainz Museum. (Swarzenski 1974, fig. 56).
332. Knop of Cologne Precentor's staff. Cologne Cathedral (Swarzenski, 1974, fig. 456).
333. Detail of eagle on knop of Cologne Precentor's staff. Cologne Cathedral (Swarzenski, 1974, fig. 456).
334. Eagle on enamel plaque from a reliquary shrine. Metropolitan Museum of Art (www.metmuseum.org).
335. Henry of Blois enamel. British Museum (Wikipedia).
336. Byzantine double-headed eagle, wall slab. Bulgarian (Stara Zagora), 10th-11th century. Nasionalen Arkheologicheski Muzei, Sofia. (Hubert de Vries at www.hubert-herald.nl).
337. Double-headed eagles on floor tile fragments, Hyde Abbey *c.* , Winchester. Winchester City Council (Winchester Museum Collections).
338. Lead seal of Sophronius II, patriarch of Jerusalem 1036-76/83. Winchester Museum.

339. Initial 'F' to I Samuel (I Kings), f. 99v Laud Bible. Oxford, Bodleian Library MS Laud Misc. 752. The Bodleian Library (Bodleian Library Luna Database).
340. I Samuel (I Kings) initial, detail f. 58r Rochester Bible. London, B L Royal MS 1 C VII. The British Library Board (British Library Digital Database).
341. Roof of the Temple/Tabernacle, initial to I Samuel (I Kings), detail f. 99v Laud Bible. Oxford, Bodleian Library MS Laud Misc. 752. The Bodleian Library (Bodleian Library Luna Database).
342. The Ark and the Tabernacle, f. 30v Bible of San Paolo. Rome, San Paolo Fuori le Mura MS f. 1. m. 337. Basilica of San Paolo Fuori le Mura (Grabar and Nordenfalk, 1957, p. 153).
343. Tabernacle, Numbers miniature, detail f. 66v Lambeth Bible. London, Lambeth Palace MS 3. Lambeth Palace Library (Shepard, 2007, pl. 4).
344. I Samuel (I Kings) initial, detail f. 148r Bury Bible. CCCC MS 2. Master and Fellows of Corpus Christi College (Thomson, 2001 pl. 19).
345. Frontispiece to I Samuel (I Kings), Elkanah and his wives, f. 147v Bury Bible. CCCC MS 2. Master and Fellows of Corpus Christi College (Parker Library on the Web).
346. Entry into Jerusalem, detail f. 2v Bury New Testament. Cambridge, Pembroke College MS 120. Pembroke College, Cambridge (Zarnecki, Holt, and Holland, 1984 p. 96).
347. Tunic at Baptism, detail p. 32 St Albans Psalter. Hildesheim, St Godehard's Church MS 1. Dombibliothek Hildesheim (The St Albans Psalter Project).
348. Tunic at Baptism, detail f. 13r Copenhagen Psalter. Copenhagen, Royal Library MS Thott 143. 2°. Det Kongelige Bibliotek (<http://www.kb.dk/>).
349. Tunics, initial to II Kings (III Kings), detail f. 120v Winchester Bible. Winchester Cathedral Library MS 17. The Dean and Chapter of Winchester (Donovan, 1993 fig. 2).
350. Cloaks, stoning of Stephen, detail f. 6v Gospel Lectionary MS m. 780. New York, Morgan Library MS M. 780. The Morgan Library and Museum (Morgan Library).
351. Elijah's cloak, initial to II Kings (III Kings), detail f. 159v Dover Bible. CCCC MS 3. Master and Fellows of Corpus Christi College (Parker Library on the Web).
352. Martin's cloak, detail p. 53 St Albans Psalter. Hildesheim, St Godehard's Church MS 1. Dombibliothek Hildesheim (The St Albans Psalter Project).
353. Tobit's tunic, f. 314r Laud Bible. Oxford, Bodleian Library MS Laud Misc. 752. The Bodleian Library (Bodleian Library Luna Database).
354. Satan's fur-lined cloaks, detail f. 11v, Hunterian Psalter. Glasgow University Library MS Hunter U. 3. 2. (229). University of Glasgow Library (<http://special.lib.gla.ac.uk/>).

355. Eve's tunic, detail f. 12v Burgos Bible. Burgos, Biblioteca Provincial MS 846 (Cahn, 1982 fig. 135).
356. Elkanah's gifts, detail, f. 147v Bury Bible. CCCC MS 2. Master and Fellows of Corpus Christi College (Thomson, 2001 pl. 6).
357. Magdalen and the Apostles, detail, p. 51 St Albans Psalter. Hildesheim, St Godehard's Church MS 1. Dombibliothek Hildesheim (The St Albans Psalter Project).
358. Frontispiece to Numbers, f. 70r Bury Bible. CCCC MS 2. Master and Fellows of Corpus Christi College (Parker Library on the Web).
359. Frontispiece to Numbers, upper register, detail f. 70r Bury Bible. CCCC MS 2. Master and Fellows of Corpus Christi College (Thomson, 2001 pl. 4).
360. Frontispiece to Numbers, lower register, detail f. 70r Bury Bible. CCCC MS 2. Master and Fellows of Corpus Christi College (Thomson, 2001 pl. 4).
361. Frontispiece to Deuteronomy f. 94r Bury Bible. CCCC MS 2. Master and Fellows of Corpus Christi College (Parker Library on the Web).
362. King and courtiers, Morgan Leaf, verso detail. New York, Morgan Library MS M. 619. The Morgan Library and Museum (Morgan Library).
363. Frater Ambrosius initial, f. 1v Bury Bible. CCCC MS 2. Master and Fellows of Corpus Christi College (Thomson, 2001 pl. 1).
364. Man and hare, Frater Ambrosius initial, detail f. 1v Bury Bible. CCCC MS 2. Master and Fellows of Corpus Christi College (Thomson, 2001 pl. 1).

ILLUSTRATIONS

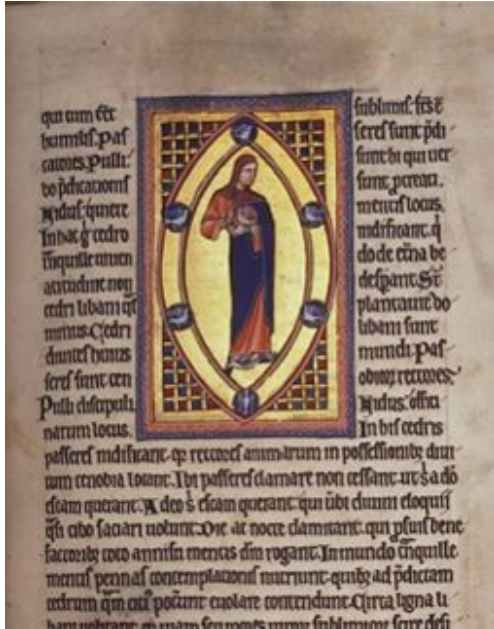


Fig. 1. Finger marks, f. 34r
Aberdeen Bestiary.



Fig. 2. Rubbed surface near crib, detail, Nativity,
 p. 21 *St Albans Psalter*.



Fig. 3. Detail of apostles, p. 38 *St Albans Psalter*.



Fig. 4. Detail of apostles, f. 6v *Queen Melisende's Psalter*.



Fig. 5. Artist's studies for historiated Psalm initials, f. 135r Evreux BM MS 4.



Fig. 6. Artists at work, f. 241v *Dover Bible*.



Fig. 7. Hands and arms, detail, p. 343 *St Albans Psalter*, and a more likely alternative arrangement of hands and arms.



Fig. 8. Crucifixion, f. 52v BL Arundel 60.



Fig. 9. Initial, f. 119v *Passionale*.



Fig.10. Initial, f. 43v *Anselmus*.

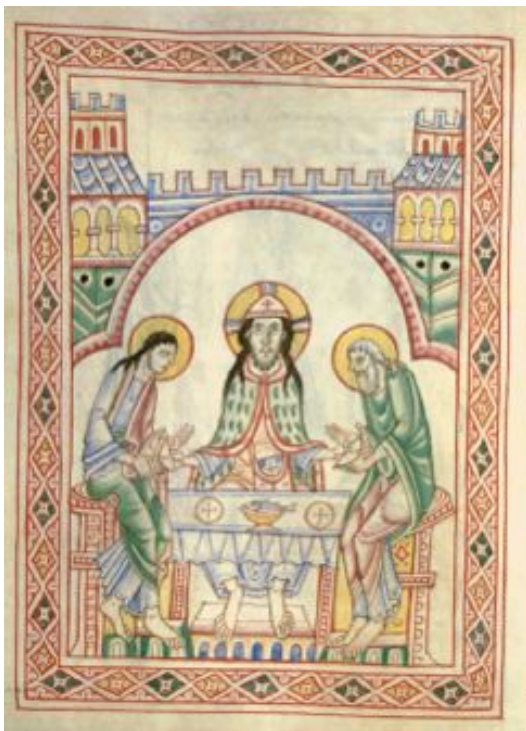


Fig. 11. Supper at Emmaus, p. 70
St Albans Psalter.



Fig. 12. The Flight into Egypt, p. 29 *St Albans Psalter*.



Fig. 13. Hinguar, f. 10v
Life of St Edmund.



Fig. 14. The Presentation, p. 28 *St Albans Psalter.*



Fig. 15. Thief, f. 19r *Life of St Edmund.*

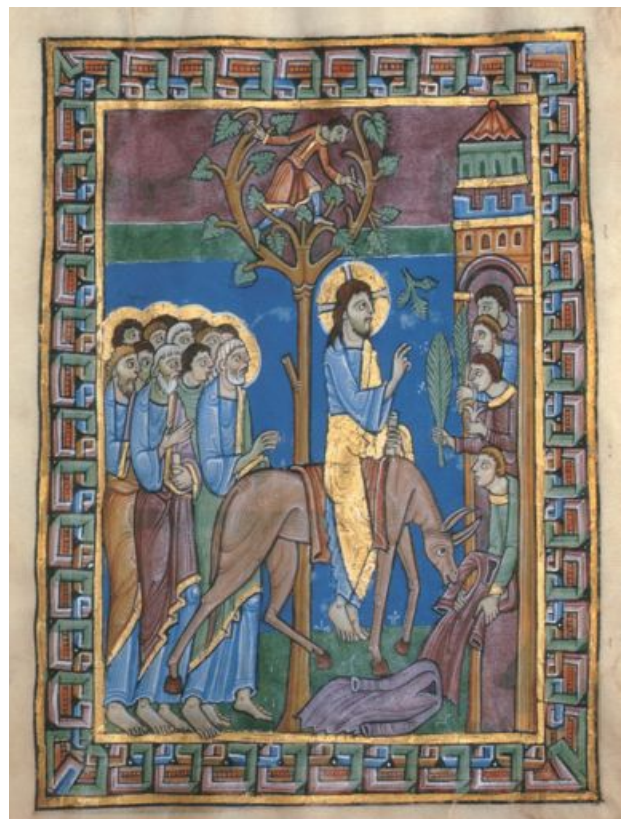


Fig. 16. The Entry into Jerusalem, p. 37
St Albans Psalter.



Fig. 17. The Hanged Thieves, f. 19v *Life of St Edmund*.



Fig. 18. The Murder of Edmund, f. 14v *Life of St Edmund*.



Fig. 19. Adam and Eve, p. 17 *St Albans Psalter*.



Fig. 20. The Death of King Sweyn Announced, f. 22r *Life of St Edmund*.



Fig. 21. Detail of black outline, f. 22r *Life of St Edmund*.



Fig. 22. Egelwin crossing the Bridge, f. 20v *Life of St Edmund*.



Fig. 23. The thieves and the Bishop, f. 19r *Life of St Edmund*.



Fig. 24. Edmund, f. 22v
Life of St Edmund.



Fig. 25. Christ, p. 52 *St Albans Psalter.*



Fig. 26. Christ, p. 53 *St Albans Psalter.*



Fig. 27. Priest, f. 45v
Anselm Meditationes.



Fig. 29. Purple background, p. 51 *St Albans Psalter.*



Fig. 28. Blue background, p. 17
St Albans Psalter.



Fig. 30. Purple background, p. 51 *St Albans Psalter.*



Fig. 31. Purple background, p. 31 *St Albans Psalter*.



Fig. 32. Purple background repairs, p. 47 *St Albans Psalter*.



Fig. 33. Worn blue background, p. 18 *St Albans Psalter*.



Fig. 34. Tree shapes, p. 17 *St Albans Psalter*.



Fig. 35. Worn blue, p. 19 *St Albans Psalter*

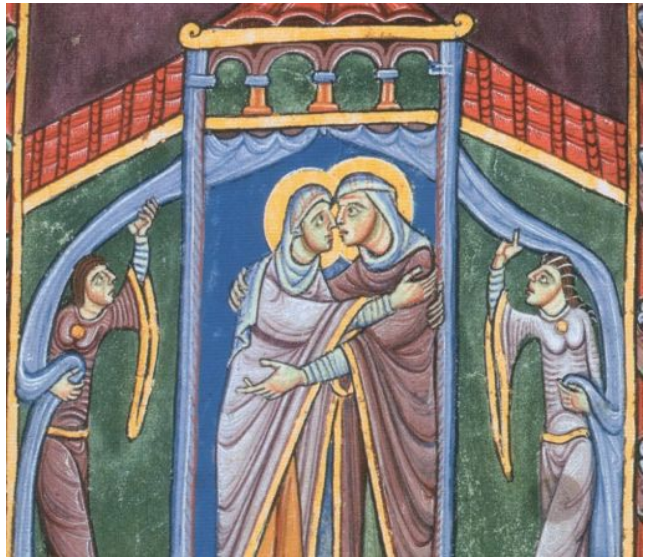


Fig. 36. Gold, p. 20 *St Albans Psalter*.



Fig. 37. Worn blue, Return from Egypt p. 31 *St Albans Psalter*.



Fig. 38. Gold in the Baptism, p. 32 *St Albans Psalter*.



Fig. 39. Decorative initial, f. 101r Verdun Anselm, *Meditationes*.



Fig. 40. Man and dragon, f. 29v Verdun Anselm, *Meditationes*.



Fig. 41. Edmund captured, f. 12v *Life of St Edmund*.



Fig. 42. Naked man and dragon, f. 42v Verdun Anselm, *Meditationes*.



Fig. 43. Red dog, f. 15v Verdun Anselm, *Meditationes*.



Fig. 44. Garment draperies, Moses and Aaron, f. 94r *Bury Bible*.



Fig. 45. Garment draperies, Job's sons, f. 344v *Bury Bible*.



Fig. 46. Detail of garment draperies, f. 79v *Cluny Lectionary*.



Fig. 47. Garment draperies, Asinou Church sanctuary apse.



Fig. 48. Angel, Adoration of the Magi, p. 212
Menologium of Basil II.



Fig. 49. Garment draperies, choir vault,
Church of St Sophia, Ohrid.



Fig. 50. Green sleeve,
f. 94r *Bury Bible.*



Fig. 51. Bear keeper's sleeve,
f. 220r *Bury Bible.*

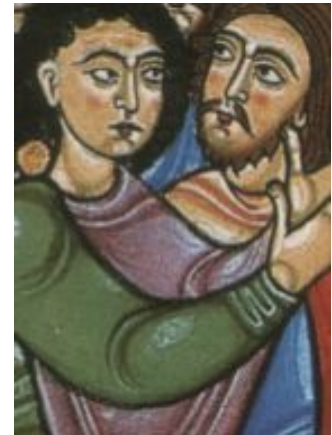


Fig. 52. Job's son's sleeve,
f. 344v *Bury Bible.*



Fig. 53. Micah's sleeve, f. 328r *Bury Bible.*

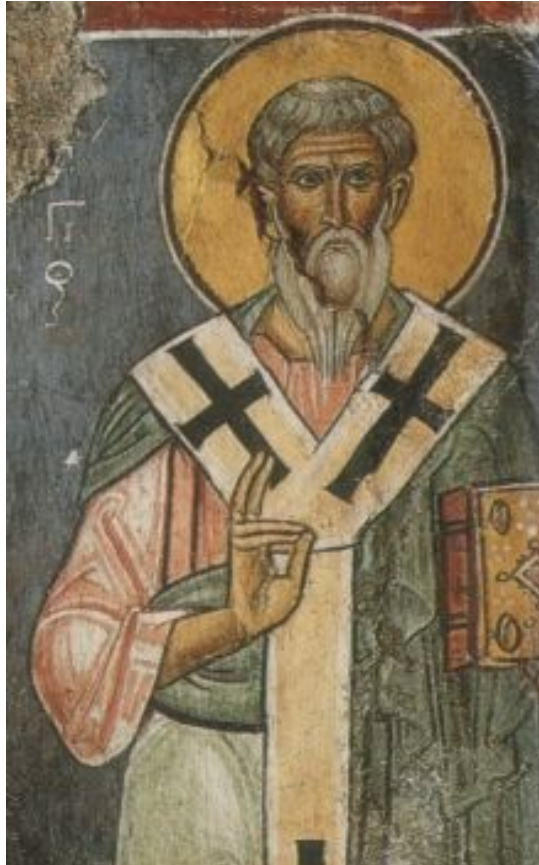


Fig. 54. St Tychikos' sleeve, Sanctuary wall, Church of Our Lady, Asinou.



Fig. 55. Detail, St Tychikos' sleeve, Asinou.



Fig. 56. Apostle's sleeves, Entry into Jerusalem. Nave wall, Church of Our Lady, Asinou.



Fig. 57. Drapery style, Nave wall Church of St Sophia, Ohrid.

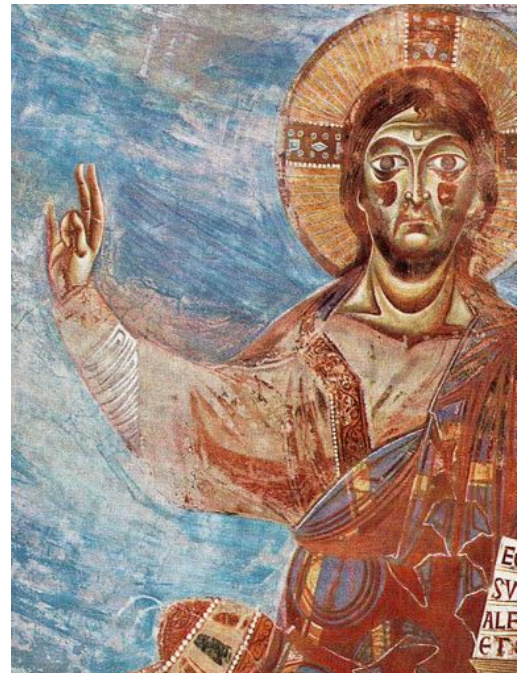


Fig. 58. Christ's sleeve, Church of Sant' Angelo in Formis.



Fig. 59. Christ's sleeve, detail, Church of Sant' Angelo in Formis.



Fig. 60. Blue robes, Christ in Majesty f. 281v *Bury Bible*.



Fig. 61. A group of figures, James the Monk, *Homilies on the Virgin* [no foliation given].



Fig. 62. Blue garments, Presentation, f. 3r *Queen Melisende's Psalter*.



Fig. 63. Evangelist figure,
f. 281v *Bury Bible*.



Fig. 64. Ezechiele, f. 281v *Bury Bible*.



Fig. 65. Micah, f. 328v *Bury Bible*.



Fig. 66. St Paul and the Viper, Anselm's Chapel, Canterbury Cathedral.



Fig. 67. St Paul, Dormition of the Virgin. Nave wall, Church of Our Lady, Asinou.



Fig. 68. St Paul falling. Nave wall Capella Palatina.

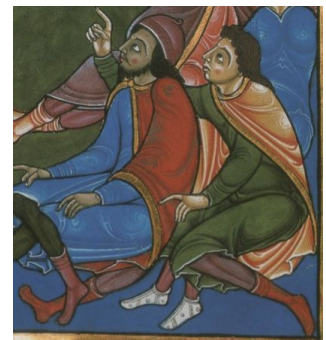


Fig. 69. Traced figures, f. 70r and f. 94r *Bury Bible*.



Fig. 70. Hannah reversed, f. 147v *Bury Bible*.



Fig. 71. Amos, f. 342r *Bury Bible*.



Fig. 72. Hannah's worn face and torso and worn blue background, f. 147v *Bury Bible*.



Fig. 73. Hannah's head, Penninah's arm and worn blue, f. 147v *Bury Bible*.



Fig. 74. Possible colour note, f. 147v *Bury Bible*.



Fig. 75. Water damage, f. 1v *Bury Bible*.



Fig. 76. Grey undercoat over green, *Morgan Leaf* verso.



Fig. 77. Grey undercoat, Samuel's robe, f. 93r *Souvigny Bible*.



Fig. 78. Psalter Leaf, Morgan MS M. 724 recto.



Fig. 79. Psalter Leaf, V&A MS 661 recto.



Fig. 80. Psalter Leaf, Tree of Jesse Morgan MS M. 724 verso.



Fig. 81. Miniature, f. 125r *Gospels of St Augustine*.

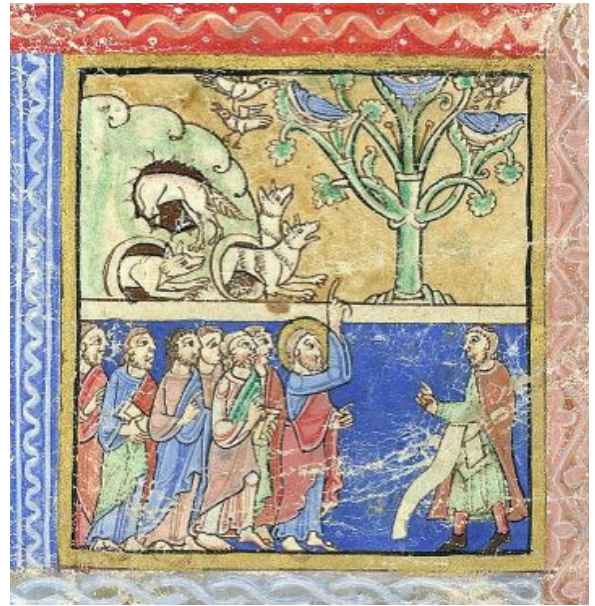


Fig. 82 Foxes and nesting birds, BL Psalter Leaf verso.



Fig. 83. The Visitation, Morgan 724 recto.



Figs. 84-85. Drawings of two attendants at the Visitation, Morgan 724 recto.



Fig. 86. Nativity and angel, Morgan 724 verso.



Fig. 87. Drawing of unpainted angel, Morgan 724 verso.



Fig. 88. Tree of Jesse figure, Morgan 724 verso.

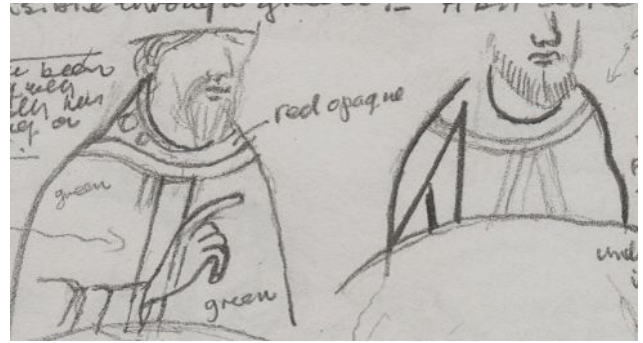


Fig. 89. Drawing, Tree of Jesse figures. Morgan 724 verso.



Fig. 90. Jews before Herod, BL Psalter Leaf recto.



Fig. 91. Crown of Thorns, V&A Psalter Leaf recto.

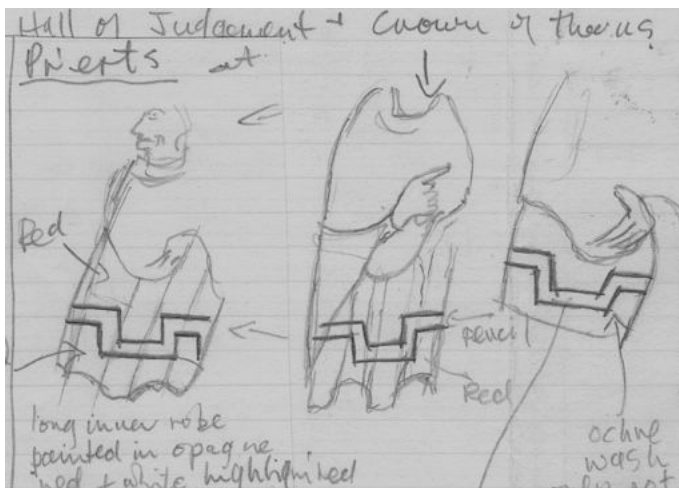


Fig. 92. Drawing, priests' robes, V&A Psalter Leaf recto.



Fig. 93. Initial, f. 205r BL Harley MS 105.



Fig. 94. Ruth miniature, detail f. 130r *Lambeth Bible*.



Fig. 95. Naomi's robe, f. 130r *Lambeth Bible*.



Fig. 96. Amos, f. 259v *Dover Bible*.



Fig. 97. Angel at the Expulsion, Capella Palatina mosaic.



Fig. 98. Nahum's green tunic, f. 265r *Dover Bible*.



Fig. 99. Zephaniah, f. 266v *Dover Bible*.



Fig. 100. Kiss of Judas, Monreale Cathedral mosaic.



Fig. 101. Green paint, initial to I Samuel (I Kings) f. 117r *Dover Bible*.

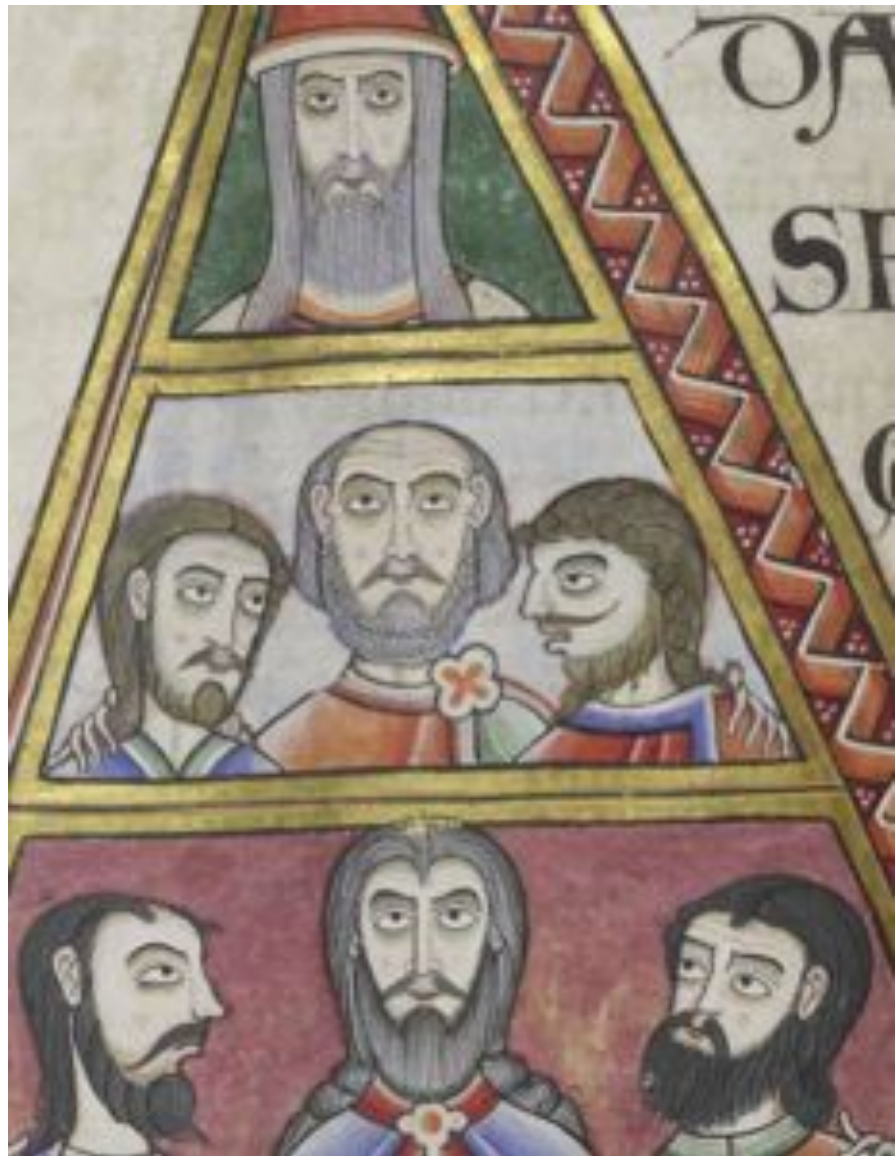


Fig. 102. Heads, initial to Chronicles, f. 85v *Dover Bible*.



Fig. 103. Head. Initial Gospel of St John, f. 209r *Dover Bible*.



Fig. 104. Detail of Paul's cloak, f. 245r *Dover Bible*.



Fig. 105. Detail, water stain. Initial to Leviticus, f. 43v *Dover Bible*.



Fig. 106. Solomon's head with pencil-drawn fillets. Initial to Song of Songs f. 57r *Dover Bible*.



Fig. 107. Solomon. Initial to Song of Songs f. 57r *Dover Bible*.



Fig. 108. Reaping. Calendar initial for August, f. 4v *Hunterian Psalter*.



Fig. 109. Abraham's grey robe,
f. 9v *Hunterian Psalter*.



Fig. 110. Two purples, Journey of the Magi, f. 10v
Copenhagen Psalter.



Fig. 111. Arabesque highlights,
Adoration, f. 11r *Copenhagen Psalter*.



Fig. 112. Red under-drawing, Christ's
head, f. 24r *Gough Psalter*.



Fig. 113. The Visitation, detail, f. 12r *Gough Psalter*.



Fig. 114. The Flagellation, f. 27r *Gough Psalter*.



Fig. 115. Ascension, f. 30r *Gough Psalter*.



Fig. 116. David and Musicians, f. 32v *Gough Psalter*.



Fig. 117. Musician, detail, f. 32v *Gough Psalter*.



Fig. 118. Juggler, detail, f. 32v *Gough Psalter*



Fig. 119. Cuthbert preaching, gold panel, f. 22v *Life of St Cuthbert*.



Fig. 120. Bell ringer, f. 32v
Gough Psalter.



Fig. 121. Profile heads, f. 11r *Life of St Cuthbert*.



Fig. 122. Profile head,
f. 61r *Life of St Cuthbert*.



Fig. 123. Musician, f. 32v
Gough Psalter.



Fig. 124. Servant, f. 54r *Life of St Cuthbert*.



Fig. 125. Musician with stringed
instrument, f. 32v *Gough Psalter*.



Fig. 126. Bishop, detail, f. 9r
Sermons of Maurice de Sully.



Fig. 127. Last Supper, f. 11r Douce 293.



Fig. 128. Holy Women at the Tomb,
f. 13r *Shaftesbury Psalter.*



Fig. 129. Job initial, f. 304r *Auct. Bible.*



Fig. 130. Hosea initial, f. 274v *Auct. Bible.*



Fig. 131. Beatus initial f. 2r. *Auct. Bible.*



Fig. 132. Psalm initials, f. 44r *Auct. Bible.*



Fig. 133. Morgan Leaf, recto.



Fig. 134. Green paint, Hannah and Eli, *Morgan Leaf* recto.



Fig. 135. Samuel's tunics, *Morgan Leaf* recto.



Fig. 136. King Antiochus, unfinished frontispiece to Maccabees, f. 350v *Winchester Bible*.



Fig. 137. Two figures, Ezra initial, f. 342r *Winchester Bible*.



Fig. 138. Figure by Apocrypha Master, f. 12r Bodleian *Terence*.



Fig. 139. Figure by Apocrypha Master, f. 13v Bodleian *Terence*.



Fig. 140. Unpainted figure by Master of the Leaping Figures, f. 459r *Winchester Bible*.



Fig. 141. Figure of Egyptian, Exodus initial, f. 21v *Winchester Bible*.



Fig. 142. *Morgan Leaf*, verso.



Fig. 143. Grey undercoat over green,
Morgan Leaf verso.



Fig. 144. Red under gold, f. 70r *Bury Bible*.



Fig. 145. Red under gold,
f. 134v *Dover Bible*.



Fig. 146. Red outline for gold, Flagellation, p. 44
St Albans Psalter.



Fig. 147. Glue layer, f. 158r
Lambeth Bible.



Fig. 148. p. 37 *St Albans Psalter*.



Fig. 149. Gold in Psalm heading,
f. 93v *Vespasian Psalter*.



Fig. 150. Painted gold, St Ætheldryth, f. 90v *Benedictional of St Æthelwold*.



Fig. 151. David's golden tunic, f. 93 *Eadui Psalter*.



Fig. 152. Benedict's golden robes, f. 13r *Eadui Psalter*.



Fig. 153. Robes by the Master of the Leaping Figures, f. 148r *Winchester Bible*.



Fig. 154. Micah's robes, by the Genesis Master, f. 204v *Winchester Bible*.



Fig. 155. Gold show-through on p. 245, *St Albans Psalter*.



Fig. 156. Gold leaf pieces, Ps. 112, p. 303
St Albans Psalter.



Fig. 157. Gold leaf pieces, Ps. 108, p. 296 *St Albans Psalter*.



Fig. 158. Gold, Ps. 54, p. 177
St Albans Psalter.



Fig. 159. Gold leaf pieces, Second
Temptation, p. 34
St Albans Psalter.



Fig. 160. Gold leaf pieces, Washing of
the Feet p. 38 *St Albans Psalter*.



Fig. 161. Gold leaf pieces,
Entombment, p. 48 *St Albans Psalter*.



Fig. 162. Gold leaf pieces, Agony in the Garden
p. 39 *St Albans Psalter*.



Fig. 163. Gold leaf pieces, Agony in the Garden,
p. 39 *St Albans Psalter*.



Fig. 164. Gold leaf pieces,
Genesis initial f. 6v *Lambeth Bible*.



Fig. 165. Missing gold leaf, Daniel
miniature f. 285v *Lambeth Bible*.



Fig. 166. Gold leaf, unfinished initial to Joshua,
f. 104 *Auct. Bible*.



Fig. 167. Crackled gold leaf, Job initial, , f. 292v *Auct Bible*.



Fig. 168. Psalm initials, f. 51r *Auct. Bible*.



Fig. 169. Two golds, Exodus initial, f. 18r
CCCC MS 48.



Fig. 170. Two golds, f. 258v
CCCC MS 48.



Fig. 171. Gold and black,
f. 242v CCCC MS 48.

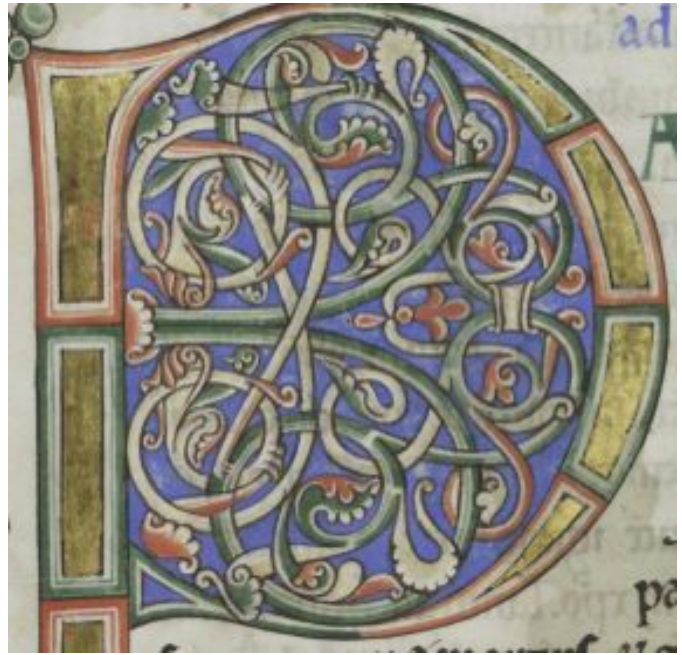


Fig. 172. Gold leaf, initial 'P' to Galatians,
f. 260r *Dover Bible*.



Fig. 173. Gold leaf pieces, initial 'P' to Galatians,
f. 260r *Dover Bible*.



Fig. 174. Gold leaf pieces, initial 'P' f. 260r
Dover Bible.



Fig. 175. Gold decorated with black, initial to II Chronicles, f. 97v *Dover Bible*.



Fig. 176. Gold decorated with black, f. 242v *Dover Bible*.



Fig. 177. Piece of gold leaf. Initial to Deuteronomy, f. 64v
Laud Bible.



Fig. 178. Psalm initial, p. 254.
St Albans Psalter.



Fig. 179. Show-through of colours and gold on p. 253
St Albans Psalter.



Fig. 180. Gold panels, initial to Hosea, f. 318r
Bury Bible.

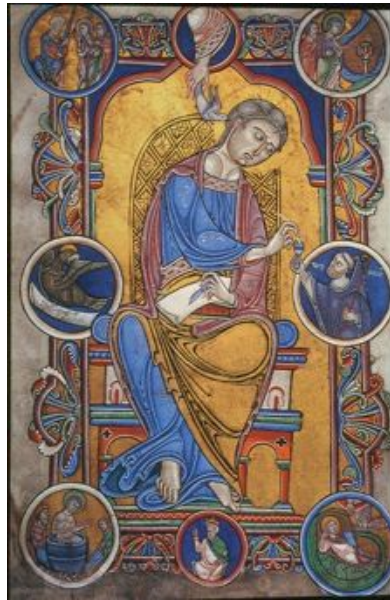


Fig. 181. Gold, St John
Avesnes Leaf.

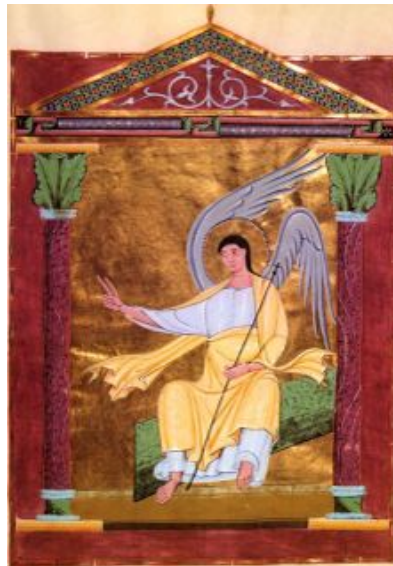


Fig. 182. Gold background, f. 117r
Pericopes Book of Henry II.



Fig. 183. Gold background, f. 8r
Gospel Lectionary MS G. 44.



Fig. 184. Gold background, f. 26r
Gospel Lectionary MS M. 780.

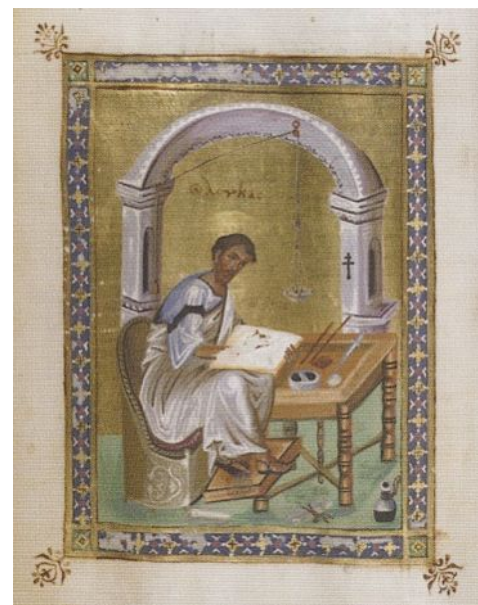


Fig. 185. Gold background, f. 76v Greek
New Testament, BL Add. 28815.



Fig. 186. Gold background, f. 9v *Queen Melisende's Psalter*.



Fig. 187. Gold background, f. 3v *Latin Gospels*.



Fig. 188. Gold background, f. 130r *Lambeth Bible*.



Fig. 189. Gold background, initial to Ephesians f. 262v *Dover Bible*.



Fig. 190. Incised gold background, St Matthew, f. 11v Greek Gospels.



Fig. 191. Incised gold background, St Matthew, f. 30v Greek Gospels.



Fig. 192. Incised gold background, St John, f. 205r Greek Gospels.



Fig. 193. Patterns and colour, Job initial, f. 304r *Auct. Bible*.

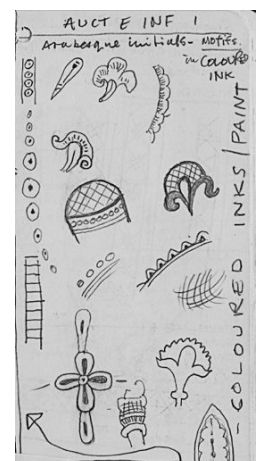


Fig. 194. Drawing of motifs in *Auct. Bible*.



Fig. 195. Hosea initial, detail, f. 274v
Auct. Bible.

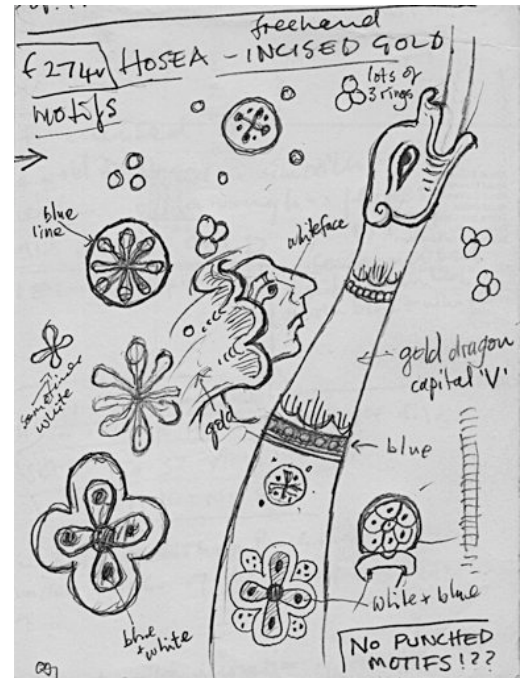


Fig. 196. Drawing of incised motifs on
Hosea initial, *Auct. Bible.*



Fig. 197. Gold of Daniel initial, f. 264r *Auct. Bible.*

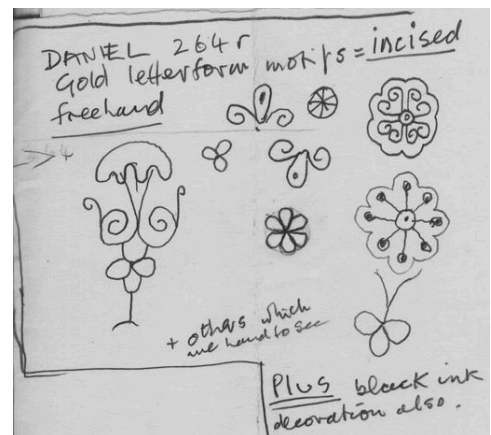


Fig. 198. Drawing of incised motifs on
Daniel initial, *Auct. Bible.*



Fig. 199. Gold form of initial 'H' to Job, f. 292v *Auct. Bible*.

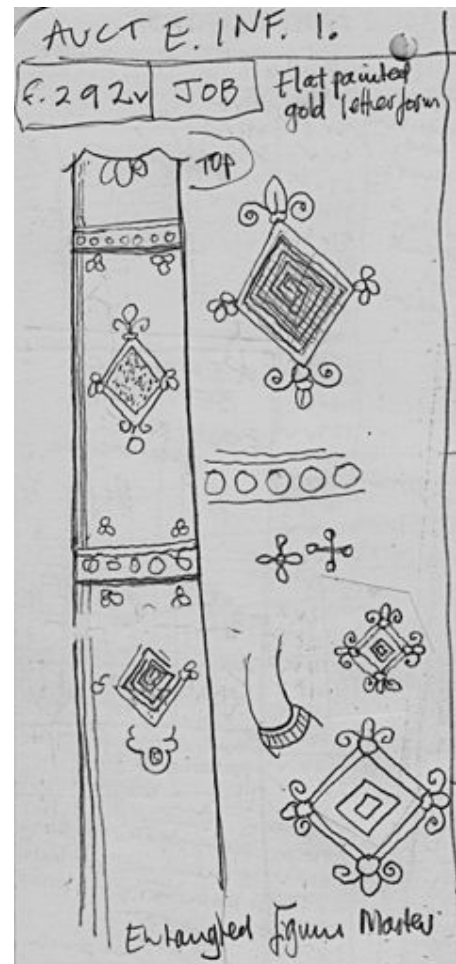


Fig. 200. Drawing of incised motifs on Job initial, *Auct. Bible*.

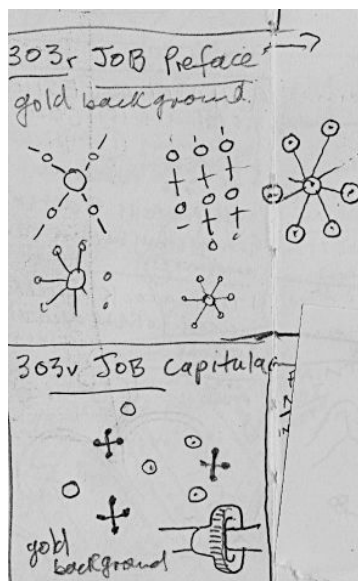


Fig. 201. Drawing of various ring, dot and cross motifs in *Auct. Bible*.



Fig. 202. Drawing of various motifs in *Auct. Bible*.

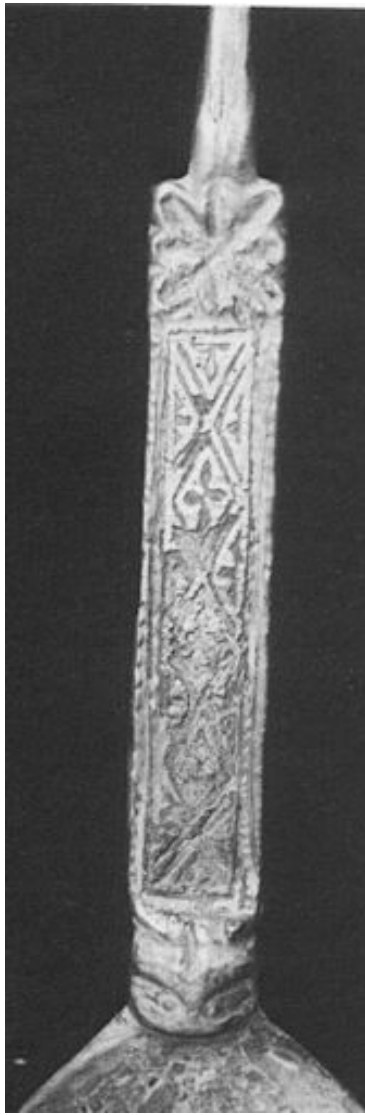


Fig. 203. Iona spoon, detail.

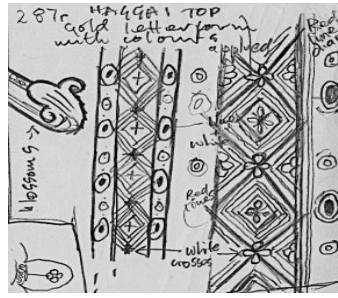


Fig. 204. Drawing of diaper strip f. 287r *Auct. Bible.*

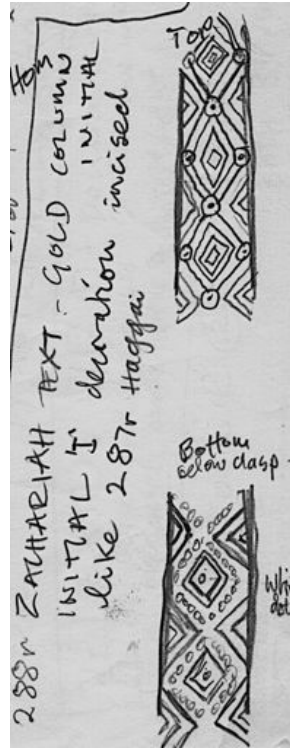


Fig. 205. Drawing of diaper strips f. 288r *Auct. Bible.*



Fig. 207. Diaper strip f. 149r *Auct. Bible.*



Fig. 208. Drawing of diaper patterns f. 149r *Auct. Bible.*



Fig. 206. Gold form of Haggai initial f. 287r *Auct. Bible.*



Fig. 209. Diaper strip f. 124r *Dover Bible.*



Fig. 210. English nielloed silver flask.



Fig. 211. English nielloed silver flask, detail.

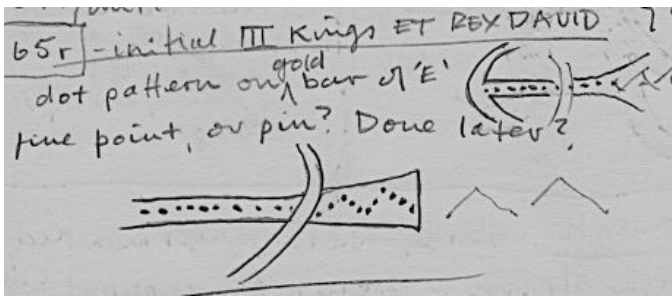


Fig. 212. Drawing of incised dots on gold, f. 165r *Lambeth Bible*.

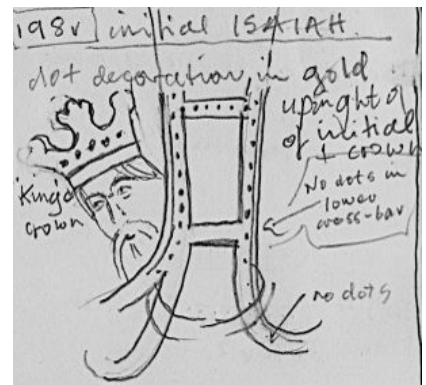


Fig. 213. Drawing of incised dots on gold, f. 198v *Lambeth Bible*.



Fig. 214. Incised gold, initial to Zephaniah, f. 266v *Dover Bible*.

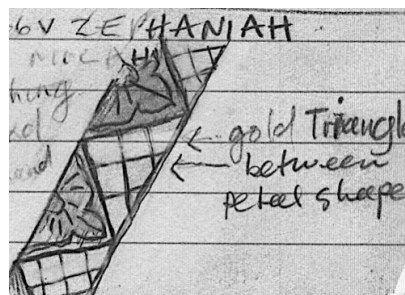


Fig. 215. Drawing of incised gold, initial to Zephaniah, f. 266v, *Dover Bible*.



Fig. 216. Incised gold roundel, f. 265r *Dover Bible*.



Fig. 217. Incised gold, Micah initial, f. 263r
Dover Bible.

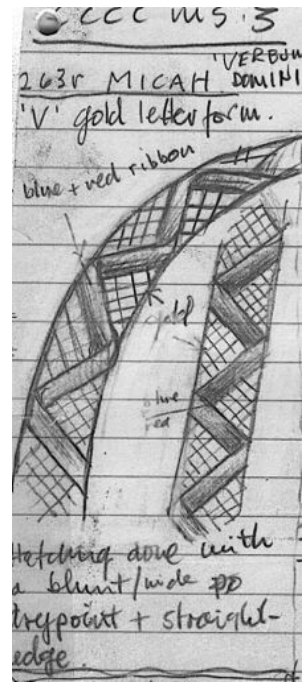


Fig. 218. Drawing of incised gold, f. 263r
Dover Bible.

Fig. 219. Archbishop
Hubert Walter's
chalice.



Fig. 220. Detail of incised crosshatched triangles on the
foot of Archbishop Hubert Walter's chalice.



Fig. 221. Gold decorated with black, initial to II Chronicles, f. 97v *Dover Bible*.



Fig. 222. Detail of silver drinking cup, with niello decoration.



Fig. 223. Gold, Judith initial f. 134r *Dover Bible*.

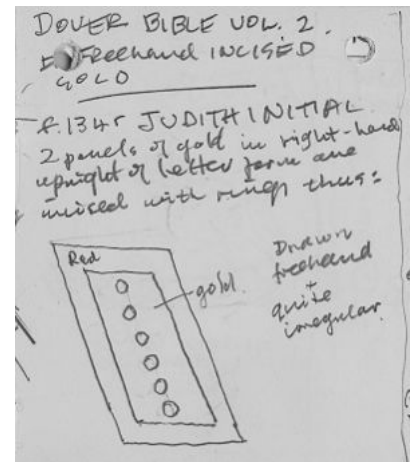


Fig. 224. Drawing, Judith initial f. 134r *Dover Bible*.



Fig. 225. Gesso and gold, calendar initial f. 3v *Hunterian Psalter*.



Fig. 226. Gesso and gold, calendar roundel f. 3v *Hunterian Psalter*.

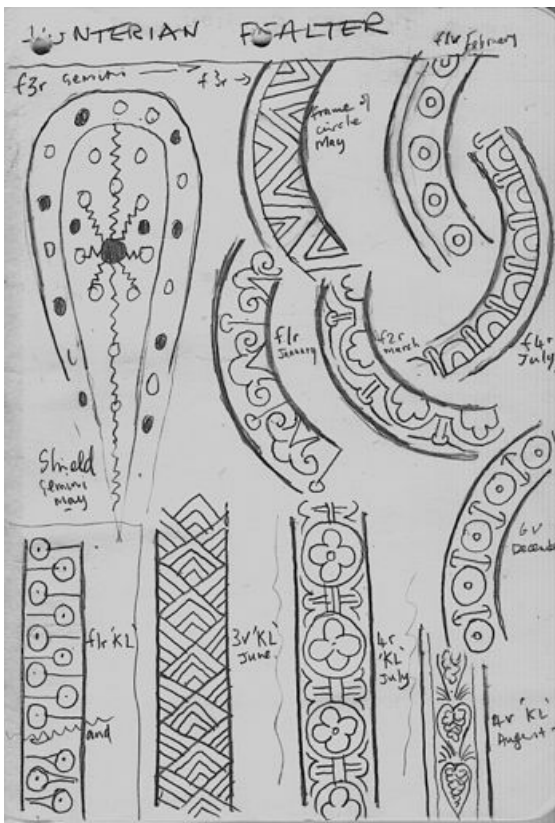


Fig. 227. Drawing, incised patterns on gold, *Hunterian Psalter*.

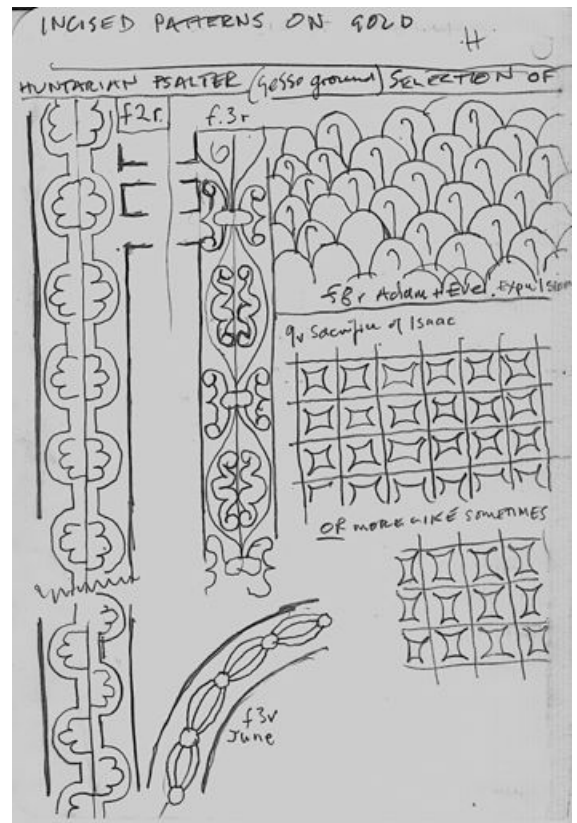


Fig. 228. Drawing, incised patterns on gold, *Hunterian Psalter*.



Fig. 229. Damaged incised diaper pattern, f. 9v, *Hunterian Psalter*.

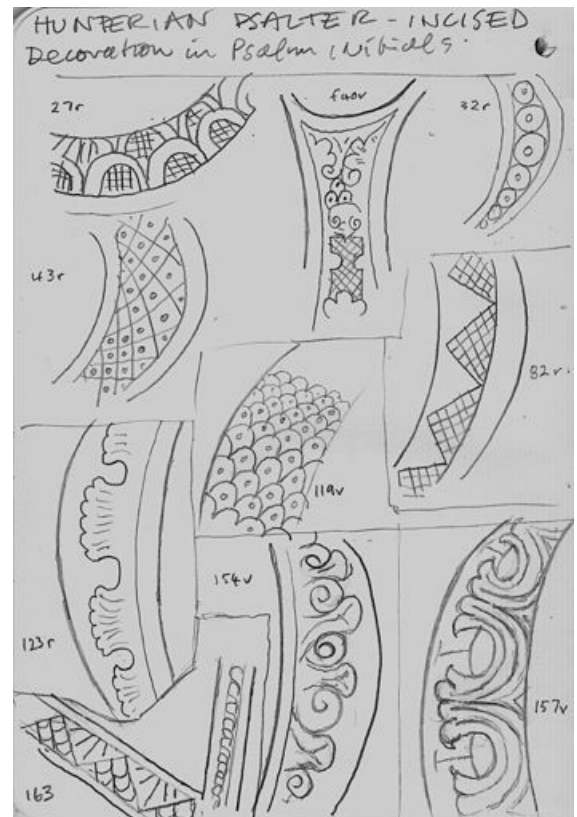


Fig. 230. Drawing, incised patterns on gold of Psalm initials, *Hunterian Psalter*.



Fig. 231. Gold in Psalm initial, f. 449v *Hunterian Psalter*.



Fig. 232. Incised gold pattern, author portrait, f. 1r *Peter Lombard Sentences*.

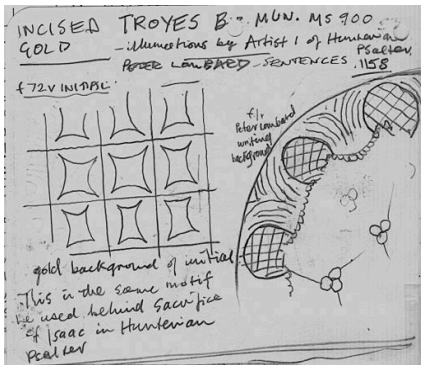


Fig. 233. Drawing, incised patterns in gold, f. 1r *Peter Lombard Sentences*.

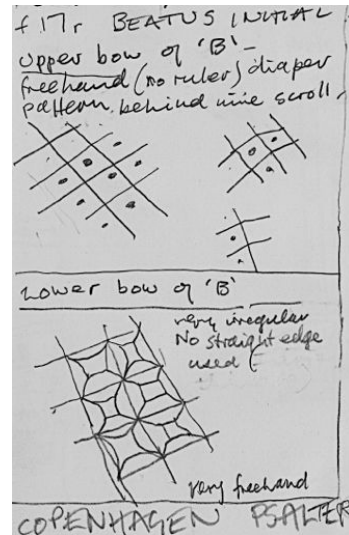


Fig. 234. Drawing of incised patterns, f. 17r *Copenhagen Psalter*.

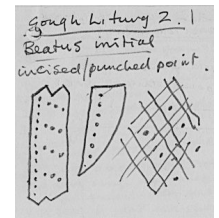


Fig. 235. Drawing, incised marks in gold, f. 33v *Gough Psalter*.



Fig. 236. Gold leaf and green cross, Genesis initial, f. 5r *Winchester Bible*.



Fig. 237. Gold, Adam and Eve f. 7v *Hunterian Psalter*.



Fig. 238. Baptism f. 5r from detached miniature cycle, MS M. 44.



Fig. 239. Detail, doubled vellum, p. 2. *Imago Mundi*.

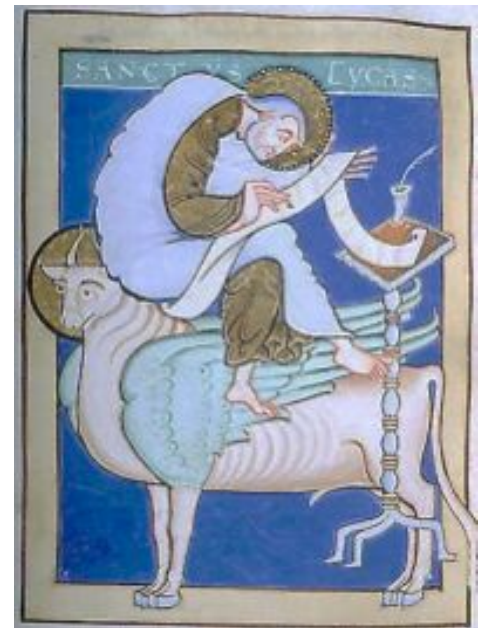


Fig. 241. St Luke, f. 37v *Mostyn Gospels*.



Fig. 240. Opening of St Matthew's Gospel, f. 16r *Trier Gospels*.



Fig. 242. Patched initial, Jerome's prologue f. 5v *Bury Bible*.



Fig. 243. Initial f. 131v
Morgan Lothian Bible.



Fig. 244. Patched miniature, f. 9r *Life of St Cuthbert.*



Fig. 245. Genesis initial, f. 7v CCCC MS 48



Fig. 246. Detail of Genesis initial f. 7v, and show-through on f. 7r, CCCC MS 48.



Fig. 247. Silk curtain raised, f. 112v *Morgan Sacramentary.*

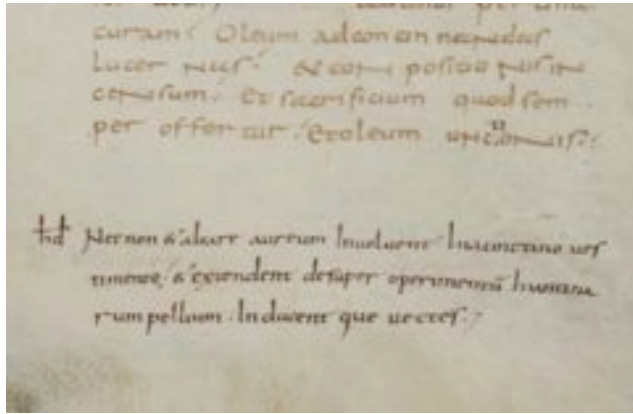


Fig. 248. Correcting scribe's verse, p. 97 Tours Bible, Cod. Sang. 75.

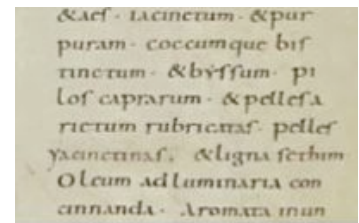


Fig. 249. Correction, p. 168, Tours Bible, Cod. Sang. 77.

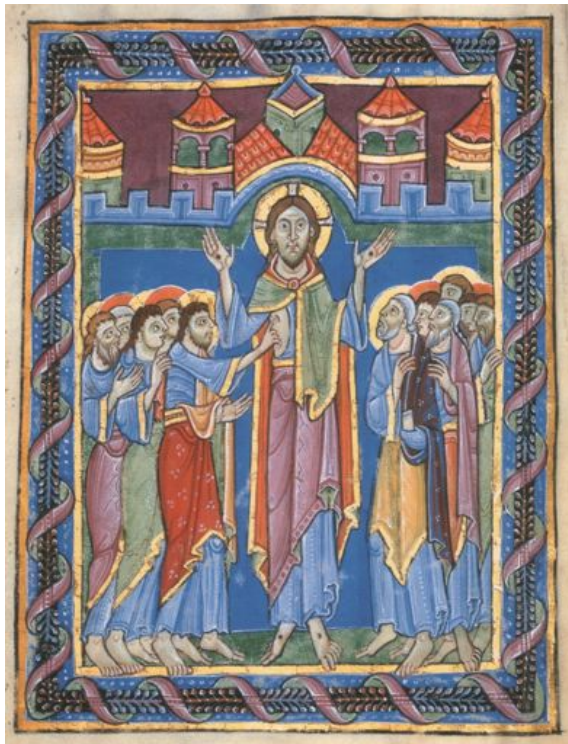


Fig. 250. Garment colours, Thomas miniature p. 52 *St Albans Psalter*.

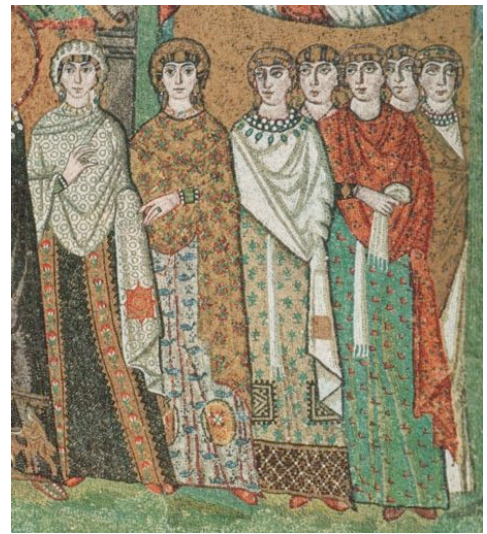


Fig. 251. Red and green garments. Mosaic, San Vitale, Ravenna.

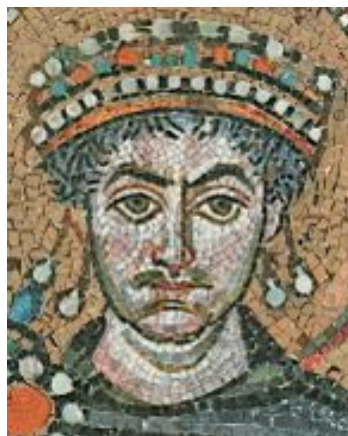


Fig. 252. Portrait of Justinian. Mosaic, San Vitale, Ravenna.



Fig. 253. Interior, Mausoleum of Galla Placidia, Ravenna.



Fig. 254. Herod's robe, p. 23 *St Albans Psalter*.



Fig. 255. Apostle's robe, p. 52 *St Albans Psalter*.



Fig. 256. Coronation, f. 8v *Life of St Edmund*.



Fig. 257. Silk tunic, f. 12v *Life of St Edmund*.



Fig. 258. Solomon's tunic, f. 57r *Dover Bible*.



Fig. 259. St Luke's silk robe, f. 193r *Dover Bible*.

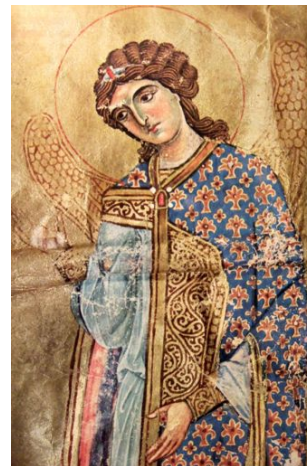


Fig. 260 Byzantine angel's robe, f. 12v *Sermons of St John Chrysostom*.



Fig. 261. The finding of Edmund's body, f. 15r, *Life of St Edmund*.



Fig. 262. Moses, f. 94r *Bury Bible*.



Fig. 263. Ruth gleaning, f. 130r *Lambeth Bible*.



Fig. 264. The Descent from the Cross, p. 47 *St Albans Psalter*.



Fig. 265. Magdalen opening, pp. 50 and 51 *St Albans Psalter*.



Fig. 266. St Martin's cloak, p. 53 *St Albans Psalter*.



Fig. 267. Alexis drawing and coloured text, p. 57 *St Albans Psalter*.



Fig. 268. Magi opening, pp. 24 and 25 *St Albans Psalter*.



Fig. 269. Dane, f. 10v *Life of St Edmund*.



Fig. 270. Dane, f. 11r *Life of St Edmund*.



Fig. 271. Dane, f. 11v *Life of St Edmund*.



Fig. 272. Ascension of Christ, p. 54 *St Albans Psalter*.



Fig. 273. Three apostles, f. 4r *Benedictional of St Æthelwold*.



Fig. 274. Three martyred saints, f. 119v
Passionale, Arundel 91.



Fig. 275. Assumption of the Virgin, f. 75v
Sacramentary, Morgan M. 641.



Fig. 276. Ascension of Christ, f. 48r
Lectionary Morgan M. 780.



Fig. 277. Coloured tunics, f. 33v
Lectionary, Egerton MS 809.



Fig. 278. Apostles' tunics, Church of
St Sophia, Ohrid.



Fig. 279. Blue tunics, f. 6v *Queen
Melisende's Psalter*.



Fig. 280. . St John dictating, f. 178v *Codex Ebnerianus*.



Fig. 281. White tunics, nave mosaics Sant' Appolinare Nuovo.



Fig. 282. Christ and the centurion, f. 22r *Codex Egberti*.



Fig. 283. Christ hands the keys to Peter, f. 152 *Pericopes Book of Henry II*.



Fig. 284. Harrowing of Hell, p. 49 *St Albans Psalter*.



Fig. 285. Christ and Peter, f. 68v *Anselm Meditations*.



Fig. 286. Christ in House of Simon, p. 36
St Albans Psalter.

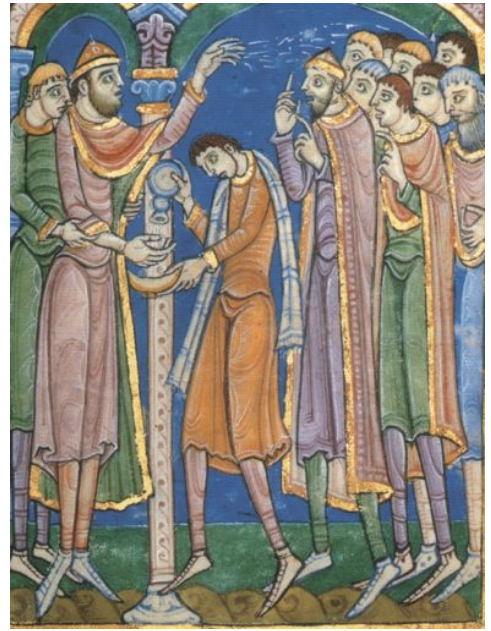


Fig. 287. Pilate and the Jews, p. 45
St Albans Psalter.

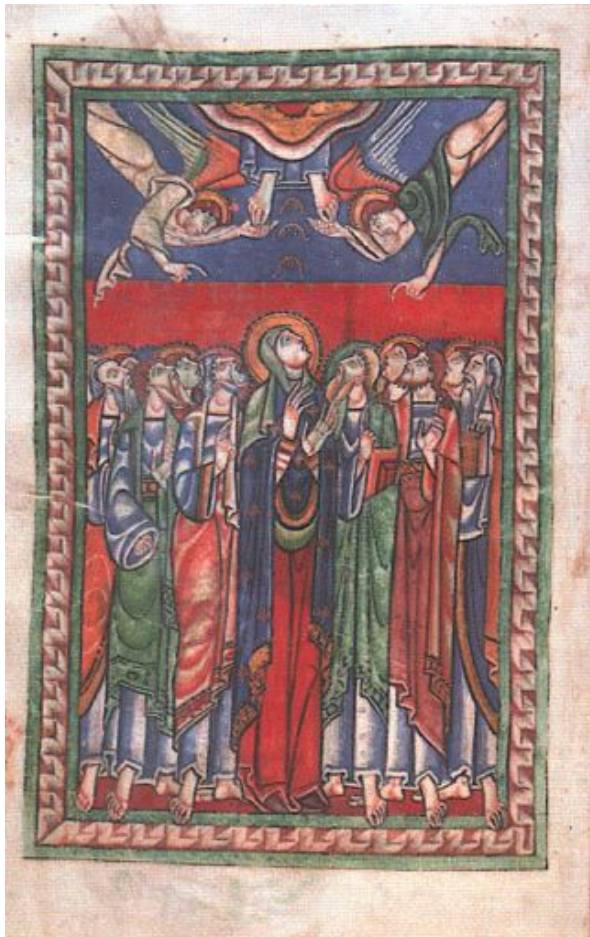


Fig. 288. Ascension, f. 13v. *Shaftesbury Psalter*.



Fig. 289. Christ, detail f. 281v
Bury Bible.



Fig. 290. Sponsa et Sponsus, f. 270v
Winchester Bible.

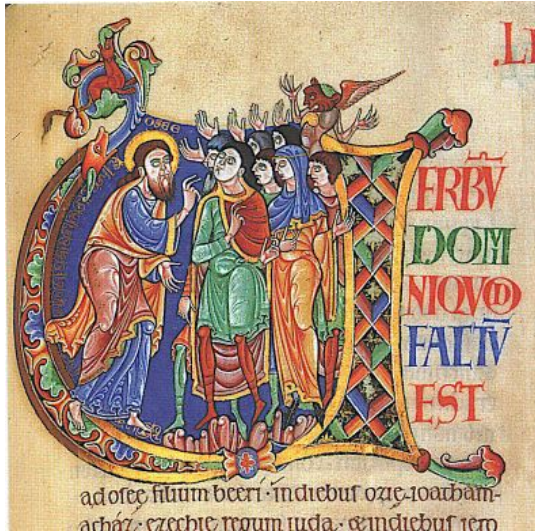


Fig. 291. Hosea initial, f. 198r
Winchester Bible.



Fig. 292. Samuel and David detail,
Morgan Leaf, verso.



Fig. 293. Ezekiel initial, f. 258v
Lambeth Bible.



Fig. 294. Isaiah initial, f. 173v
Dover Bible.



Fig. 295. Tunics in initial, f. 186v
Bodleian Anselm.



Fig. 296. Christ and apostles. Sanctuary apse, Church of Our Lady, Asinou.

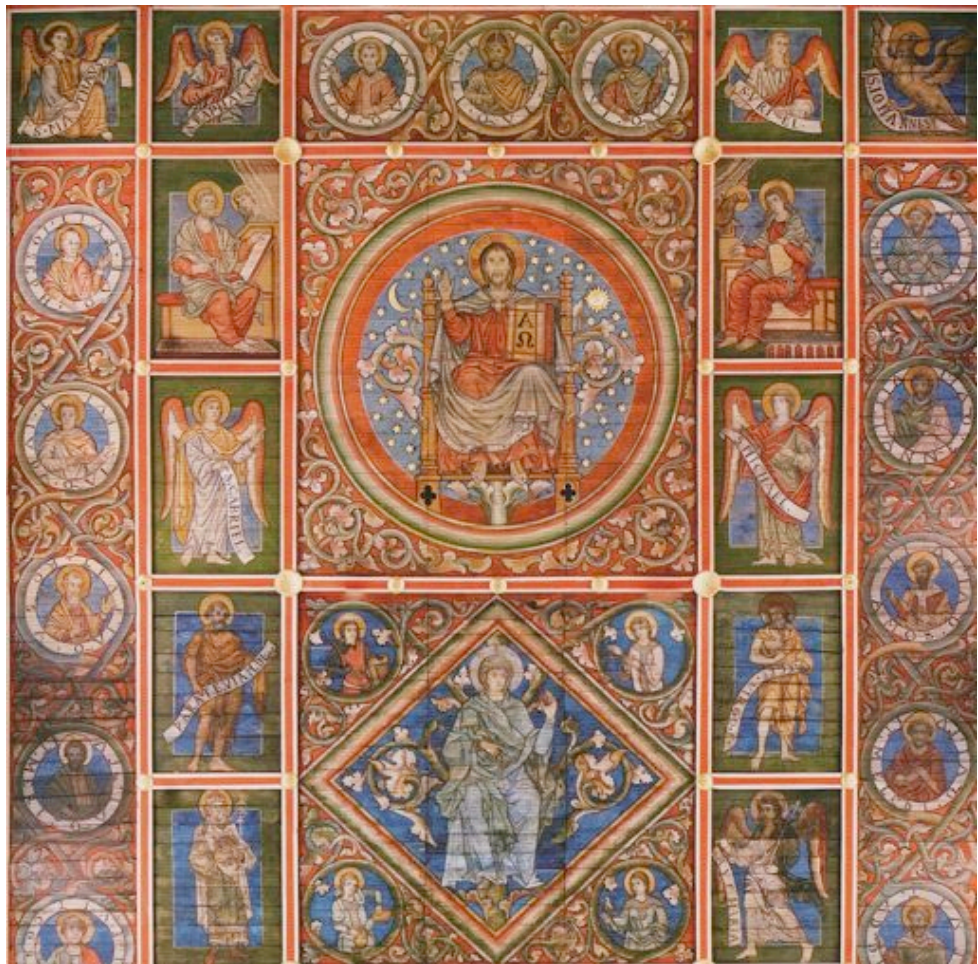


Fig. 297. Detail of blue panels, Tree of Jesse. Ceiling of St Michael's Church, Hildesheim.

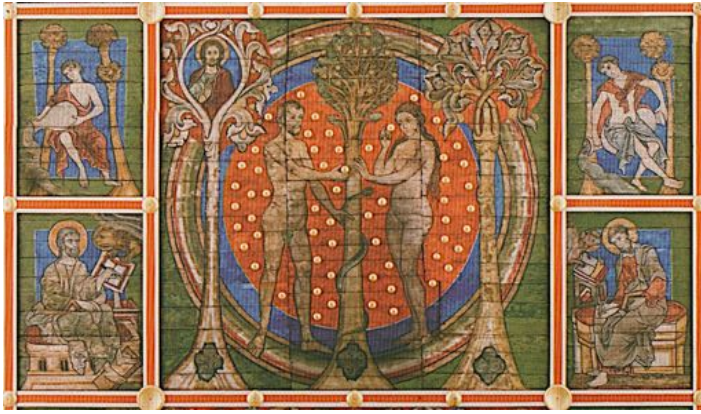


Fig. 298. Adam and Eve, red panel, ceiling of St Michael's Church, Hildesheim.



Fig. 299. Psalm 105 initial, p. 205 St Albans Psalter.



Fig. 300. Daniel miniature, f. 285v *Lambeth Bible*.



Fig. 301. Red hats, p. 48 *St Albans Psalter*.



Fig. 302. Saxon leaders, f. 8r *Life of St Edmund*.



Fig. 303. Edmund and archers, f. 14r *Life of St Edmund*.



Fig. 304. Edmund beheaded, f. 14v *Life of St Edmund*.



Fig. 305. Satan's red panel, f. 11v *Hunterian Psalter*.



Fig. 306. Satan's red panel, f. 22r *Gough Psalter*.



Fig. 307. Satan's red panel, First Temptation, Troyes Cathedral.



Fig. 308. Satan's red panel, Second Temptation, Troyes Cathedral.



Fig. 309. Scarlet cords, p. 209, detail of Ps. 106 initial, *St Albans Psalter*.



Fig. 310. Rahab in red, f. 287v *Codex Ebnerianus*.



Fig. 311. St Martin's bed cover, p. 53 *St Albans Psalter*.



Fig. 312. Edmund gives alms to the poor, f. 9r *Life of St Edmund*.



Fig. 313. Edmund's corpse, the red line, f. 17v *Life of St Edmund*.

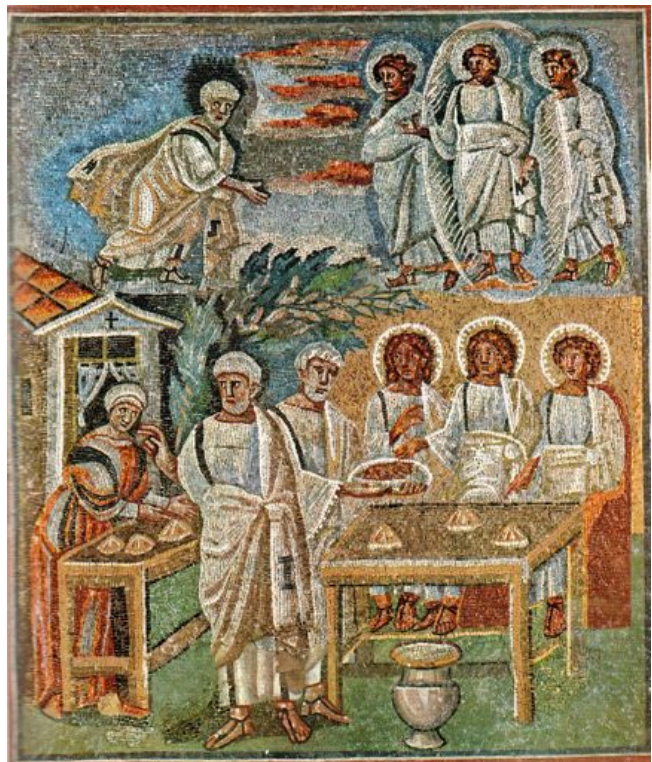


Fig. 314. Abraham and the angels, nave mosaic Santa Maria Maggiore.



Fig. 315. Figures in white, nave mosaic Sant' Appollinare Nuovo.



Fig. 316. Figures in white, nave mosaic Sant' Appollinare Nuouvo.



Fig. 317. Christ and angels, apse mosaic San Vitale.

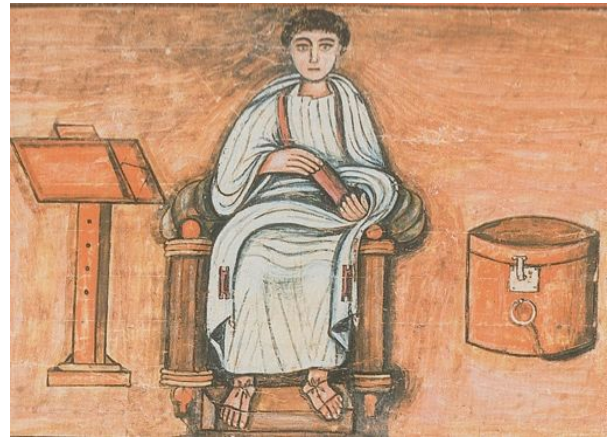


Fig. 318. Author portrait, f. 3v *Roman Virgil*.



Fig. 319. White garments of Aaron and Moses at the Tabernacle, f. 76r *Ashburnham Pentateuch*.



Fig. 320. St John, f. 178r, *Vienna Coronation Gospels*.



Fig. 321. St Luke, f. 129v *Gospels of St Augustine*.



Fig. 322. Detail of angels, f. 2v *Charter of the New Minster*.



Fig. 323. Detail of angels, f. 4r *Benedictional of St Æthelwold*.

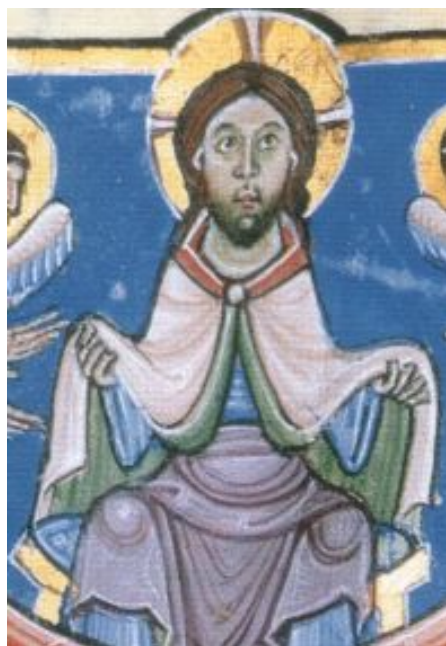


Fig. 324. St Martin's cloak, p. 53 *St Albans Psalter*.



Fig. 325. Garment of linen, f. 258r *Lambeth Bible*.



Fig. 326. Tree of Jesse, f. 7v *Capuchins' Bible*.



Fig. 327. Edmund crowned in Heaven, f. 22v *Life of St Edmund*.



Fig. 328. Samuel and Saul, *Morgan Leaf recto*, detail.



Fig. 329. Initials to Psalm 51, f. 23r *Auct Bible*.



Fig. 330. Repoussé diaper pattern on gold leaf, f. 23r *Auct. Bible*.



Fig. 331. Gisela's coronation brooch.



Fig. 332. Knop, Precentor's staff.



Fig. 333. Detail of eagle on knop, Precentor's staff.



Fig. 334. Eagle on plaque from reliquary shrine.



Fig. 335. Henry of Blois enamel.



Fig. 336. Byzantine double-headed eagle, wall slab.



Fig. 337. Floor tile fragments, Hyde Abbey.



Fig. 338. Lead seal of Sophronius II, patriarch of Jerusalem.



Fig. 339. Initial 'F' to I Kings, f. 99v *Laud Bible*.



Fig. 340. Elkanah and wives f. 58r *Rochester Bible*.



Fig. 341. Roof of Temple/Tabernacle, initial to I Kings, f. 99v *Laud Bible*.

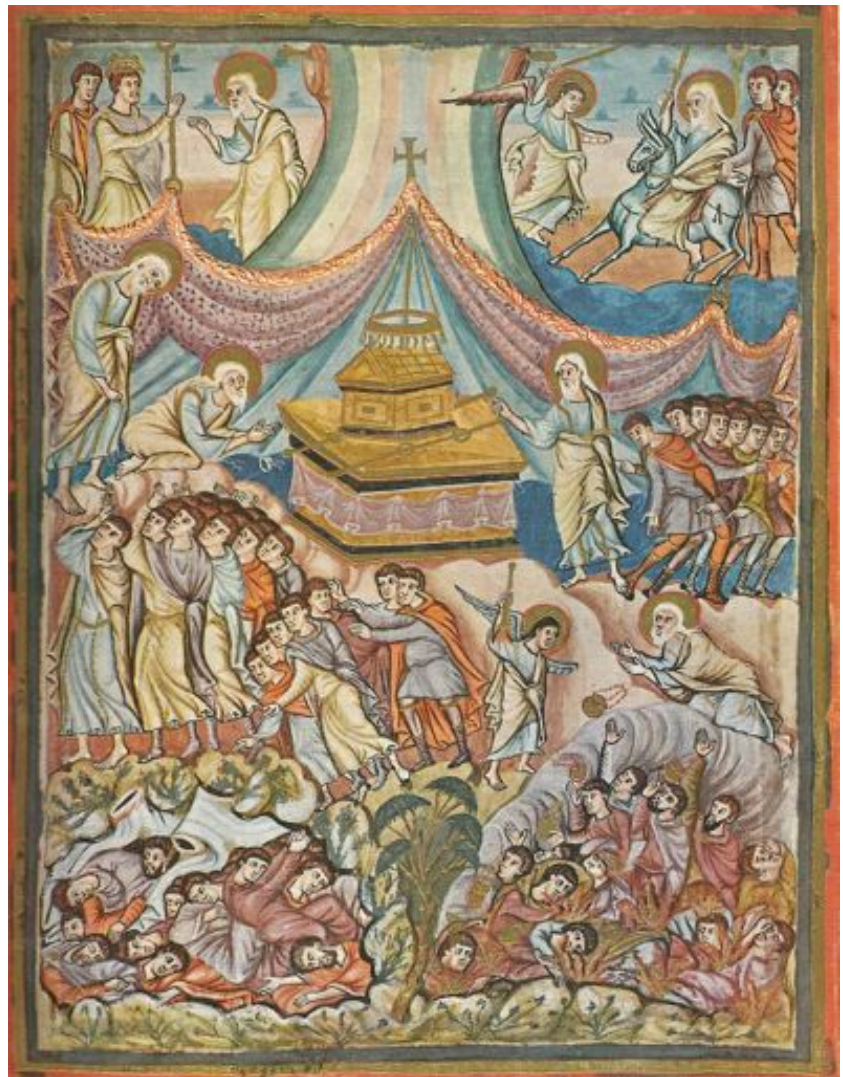


Fig. 342. Tabernacle, f. 30v, *Bible of San Paolo*.



Fig. 343. Tabernacle, detail, Numbers miniature, f. 66v *Lambeth Bible*.

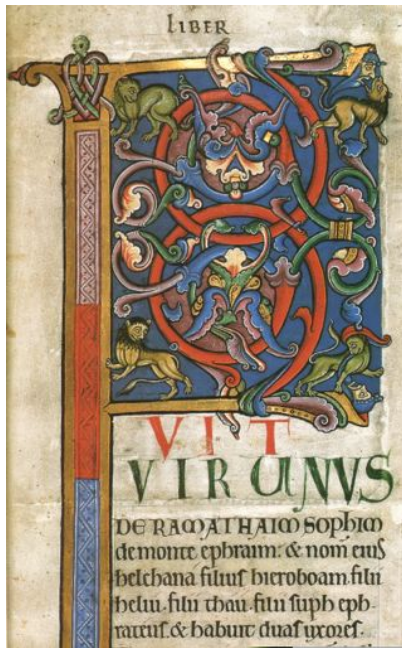


Fig. 344. Initial to I Samuel, f.148r *Bury Bible*.



Fig. 345. Frontispiece to I Samuel (I Kings), Elkanah and his wives, f. 147v *Bury Bible*.



Fig. 346. Entry into Jerusalem, f. 2v *Bury New Testament*.



Fig. 347. Baptism, tunic,
p. 32 *St Albans Psalter*.



Fig. 348. Baptism, tunic, f. 13r
Copenhagen Psalter.



Fig. 349. Detail of tunics,
initial to III Kings, f. 120v
Winchester Bible.



Fig. 350. Cloaks at Stephen's martyrdom
f. 6v *Gospel Lectionary MS M. 780*.



Fig. 351. Elijah's cloak, initial to III
Kings, f. 159v *Dover Bible*.



Fig. 352. Martin's cloak,
p. 53 *St Albans Psalter*.



Fig. 353. Tobit's tunic, f. 314r *Laud Bible*.



Fig. 354. Satan's fur-lined robes, f. 11v,
Hunterian Psalter.



Fig. 355. Eve's tunic, f. 12v *Burgos Bible*.



Fig. 356. Elkanah's gifts, detail, f. 147v *Bury Bible*.



Fig. 357. Magdalen and the Apostles, detail, p. 51 *St Albans Psalter*.



Fig. 358. Numbers miniature, f. 70r *Bury Bible*.



Fig. 359. Numbers miniature, upper register f. 70r *Bury Bible*.



Fig. 360. Numbers miniature, lower register f. 70r *Bury Bible*.



Fig. 361. Deuteronomy miniature, f. 94r
Bury Bible.



Fig. 362. King and courtiers, *Morgan Leaf*, verso.

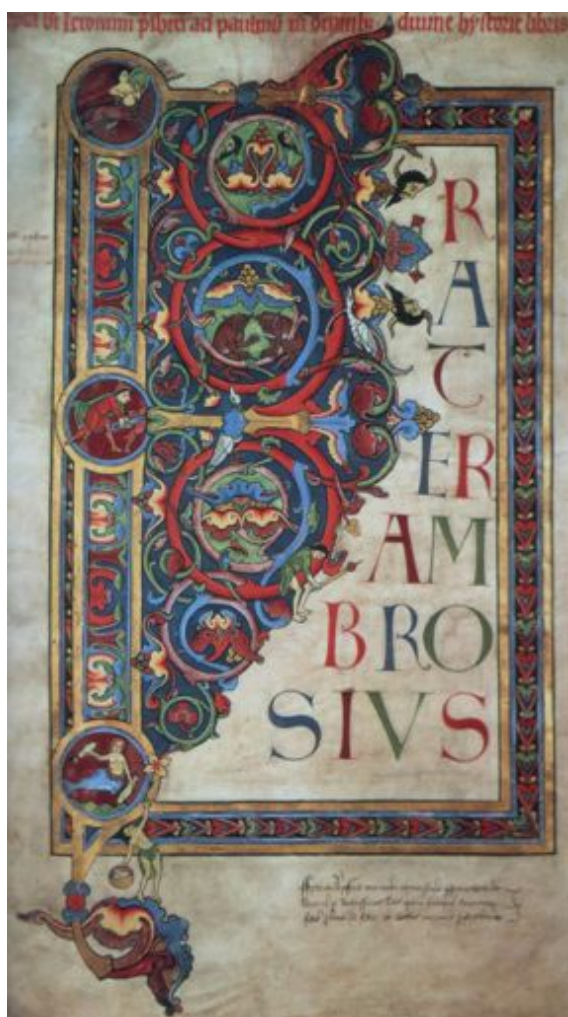


Fig. 363. Frater Ambrosius initial, f. 1v
Bury Bible.



Fig. 364. Man and hare, detail of Frater
Ambrosius initial f. 1v *Bury Bible*.