

Maja Palser

f o r H o n g / c a n o p y

for solo classical guitar

Dedicated to Tee Hong Chu

Performance instructions:

Scordatura:

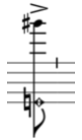


Duration: c. 5 min.

Ticks indicate single beats (crotchets in the first part of the piece and quavers in the second). Time signatures relate to bars indicated by dotted bar lines. The top, single-line staff indicates rhythmical and phrasing specifications. Phrasing should take precedence over time signature indication in terms of expression, i.e. 6/4 relates to overarching structural relationships rather than a 6/4 'feel'.



natural harmonic sounding at same pitch as written



natural harmonic (fingered node with sounding pitch written above)



continuous unmeasured rapid figuration, as one continuous note



gradually transition from lightly touching node to fully pressing down the string

canopy

Maja Palser (2019)

♩ = 48

6
4

(sempre legato)

② *p* ③ ② *pp* ② *p* ③ ② *pp*

accel. ----- decel. ----- (same tempo)

5
4

accel. ----- decel. -----

④ *mp* *mpp* ----- *p* ④ *mp* *p* ④ *mp*

3
4

(quicker pace)

pp *pppp* < *ppp* > *mp* *mp* *mp* *mp* *mf*

(♩ = 96)

3 (play all notes on lower staff with soft part of thumb)
8 (always let notes ring if possible)

5
8

mp *mf* *mp*

7
8

mp *p*

p

9
8
(with more emphasis on
lower notes)

p gradual decrescendo to end...

ppp
pppp