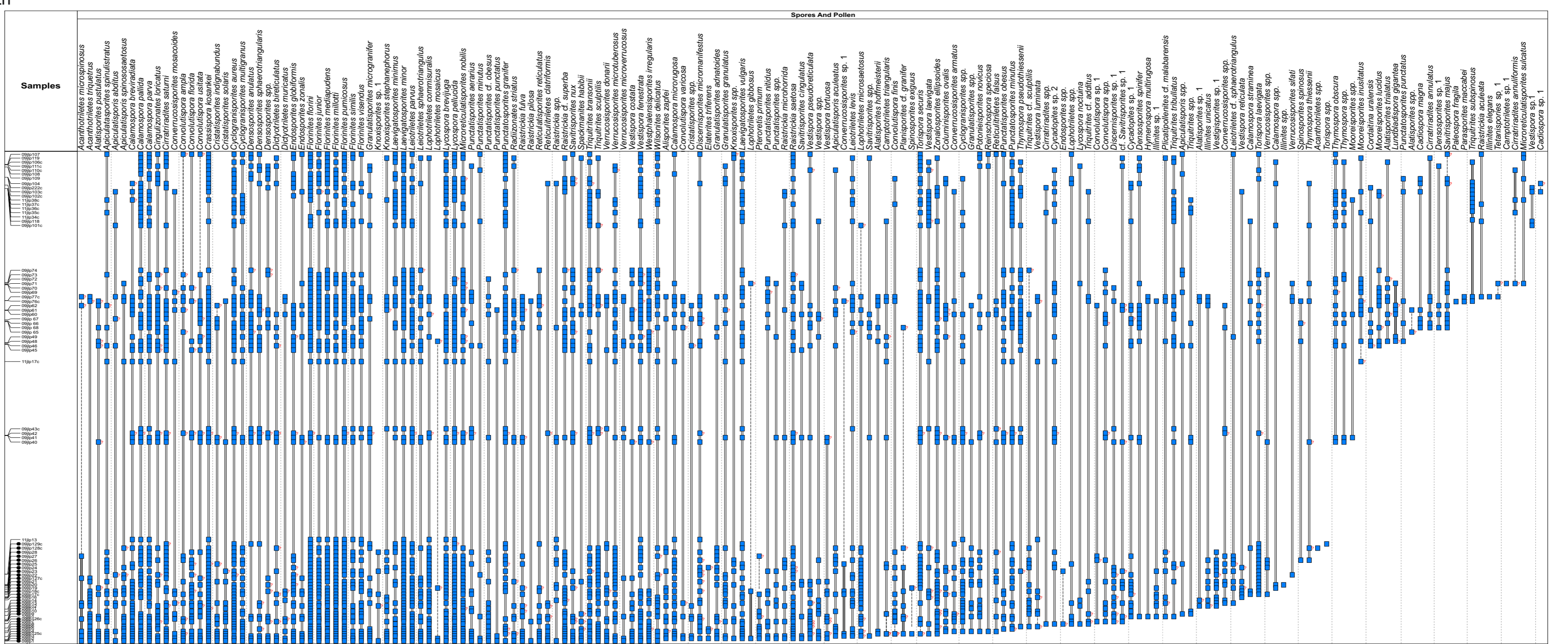
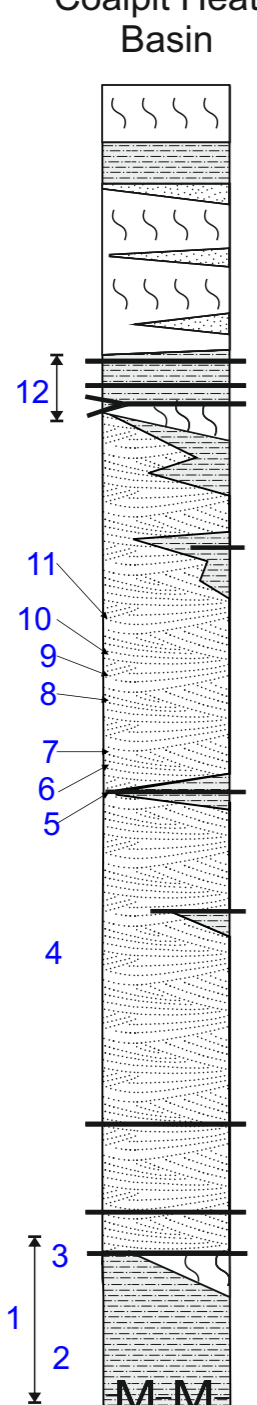


Coalpit Heath Basin

Grovesend Formation
Barren Red Member
FM
Pennant Sandstone Formation
Mangotsfield Member
Downend Member
WF

Meters
900m
850m
800m
750m
700m
650m
600m
550m
500m
450m
400m
350m
300m
250m
200m
150m
100m
50m
0m



red measures
mainly grey mudstones
mainly sandstones
coal seam
-M-M-marine band
WF Winterbourne Formation
FM Farrington Member

- 1 - Harry Stoke B borehole
- 2 - Coombe Brooke
- 3 - Staple Hill Dramway
- 4 - Grove Cottage
- 5 - Church Lane Colliery
- 6 - Red Pool
- 7 - Frome Bank Gardens
- 8 - Winterbourne Down railway cutting
- 9 - Dingle leaf bed
- 10 - 65 The Dingle
- 11 - Huckford Quarry

- 12 - Farrington Member
 - a - Coalpit Heath Colliery
 - b - Serridge Adit
 - c - Old Vicarage
 - d - Westerleigh railway cutting
 - e - Parkfield Colliery
 - f - A4174 road cutting at Shortwood
 - g - Shortwood brickpit

—099p1 sample horizon with sample number
●099p1 borehole sample horizon with sample number
099p1c coal sample
099p1 clastic sample
■ Present/range
▣ Questionable identification/questionable range

- 13 - Golden Valley
- 14 - A4174 at Stonehill
- 15 - Bickley Wood A
- 16 - Bickley Wood B
- 17 - Salridge Vein near Keynsham
- 18 - Brislington 3 borehole
- 19 - Brislington 1 borehole
- 20 - Hursley Hill Borehole