

## Supplementary material Chapter 4

Signatures of selective sweeps in the UK museum record at SNPs: AX-100879265, AX-100459612 and AX-100681217.

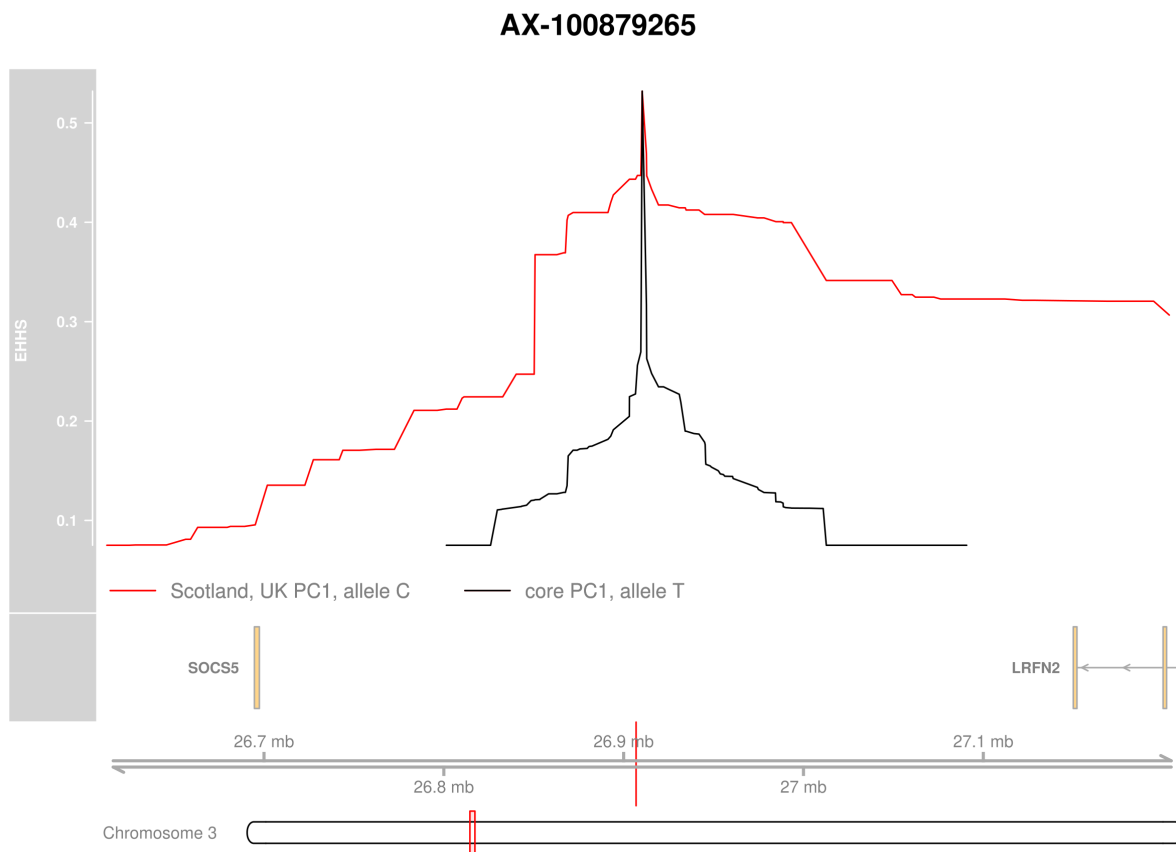


Figure S4.1: A selective sweep identified around focal SNP AX-100879265 in the Scotland population

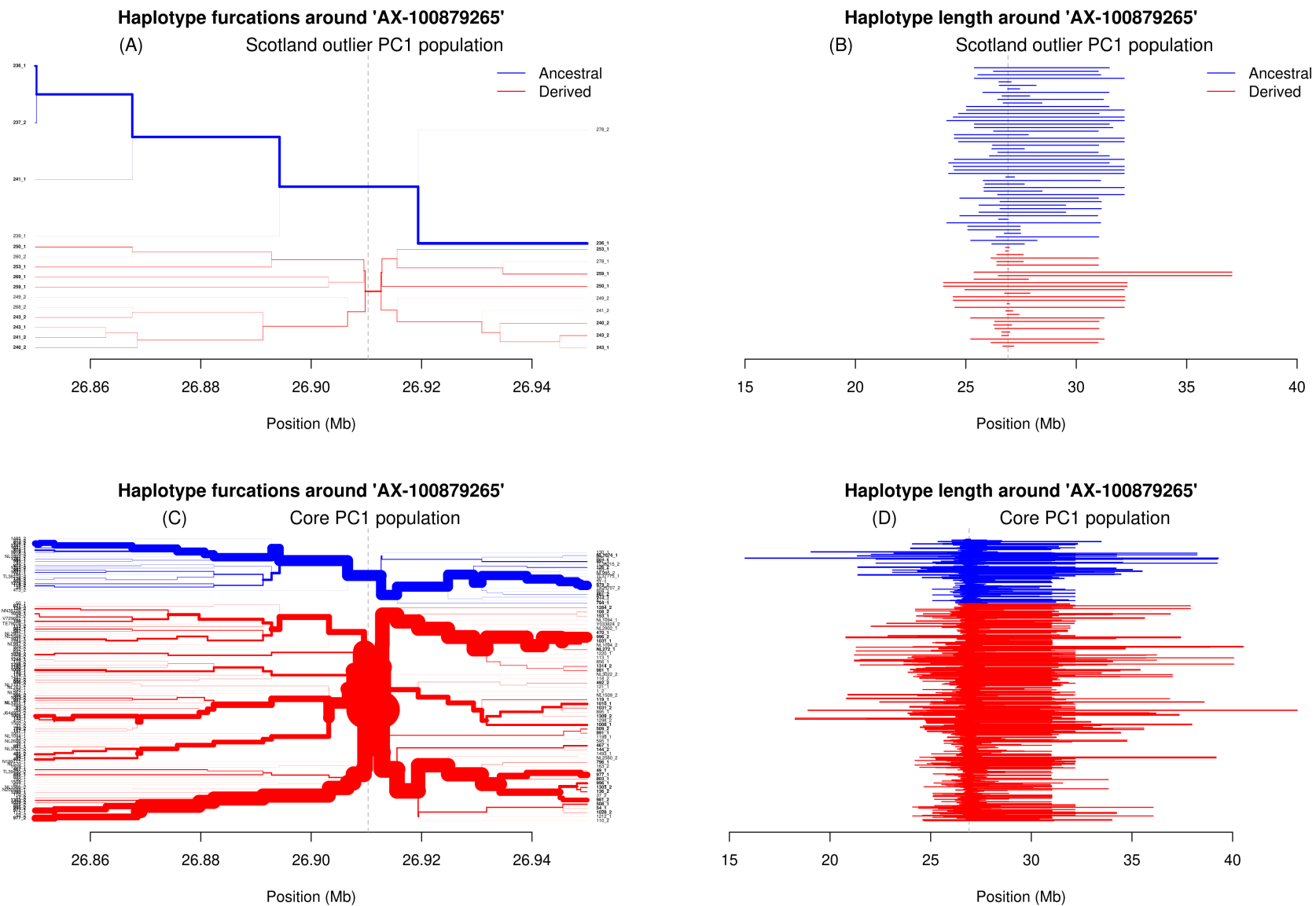


Figure S4.2: Furcation trees for all alleles around a focal SNP AX-100879265 in the Scotland outlier PC1 population (panel A) and core PC1 populations (panel C). Extended haplotype lengths around a focal SNP AX-100879265 in the Scotland outlier PC1 population (panel B) and core PC1 populations (panel D).

### AX-100459612

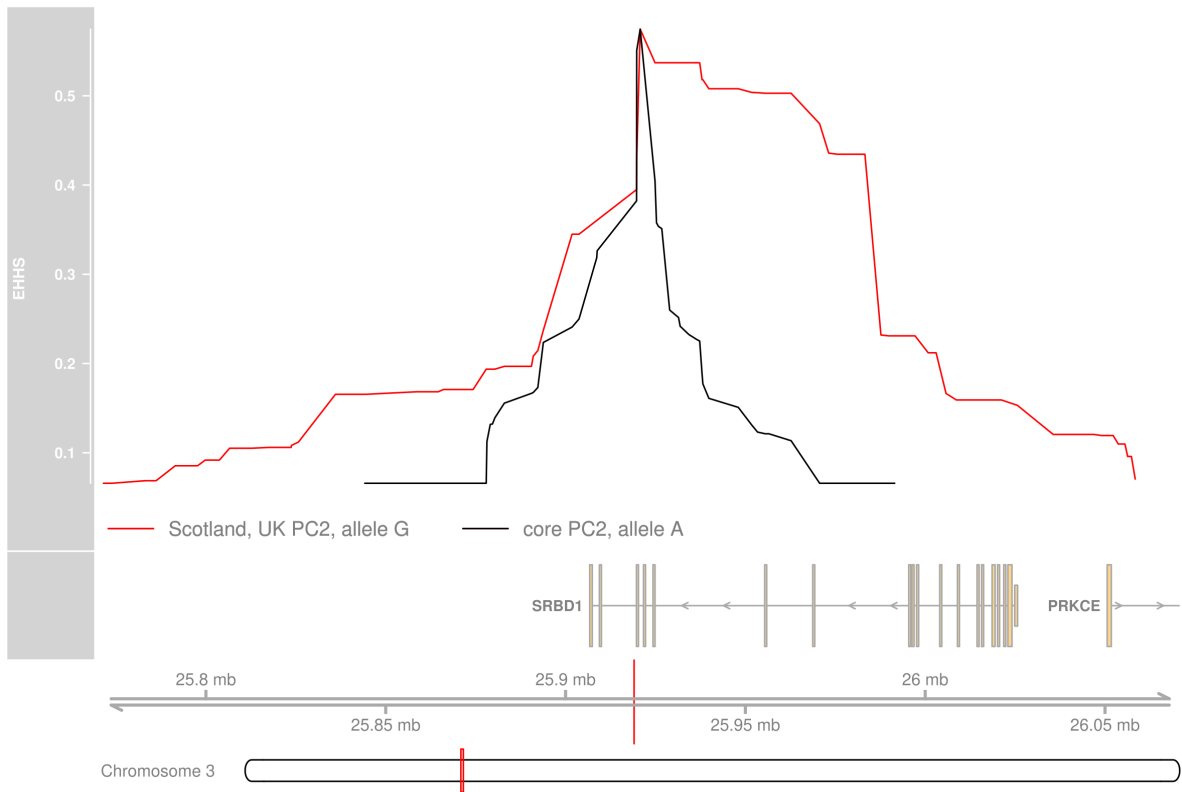


Figure S4.3: A selective sweep identified around focal SNP AX-100459612 in the Scotland population

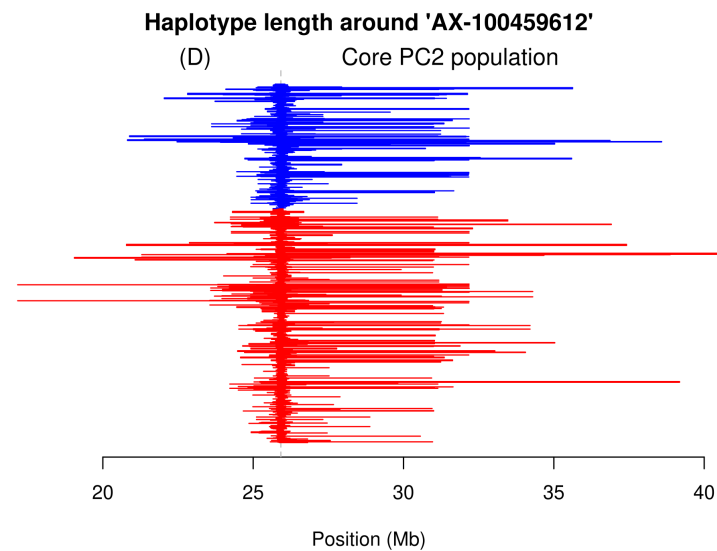
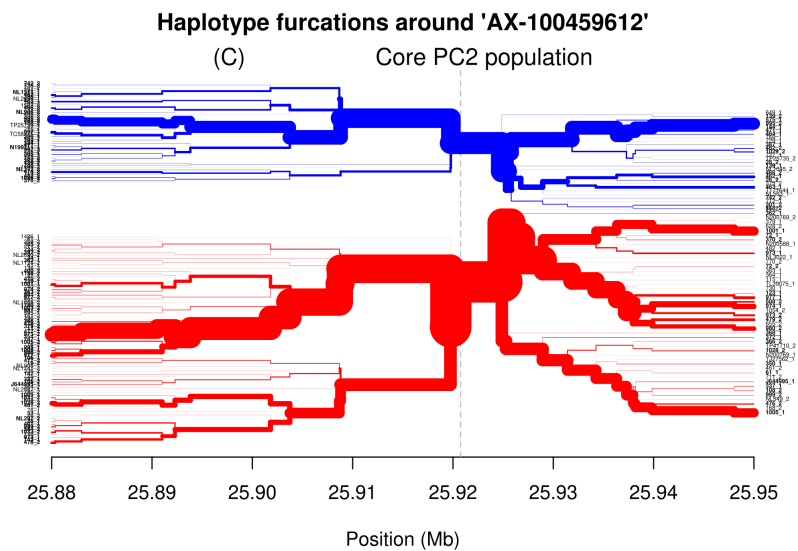
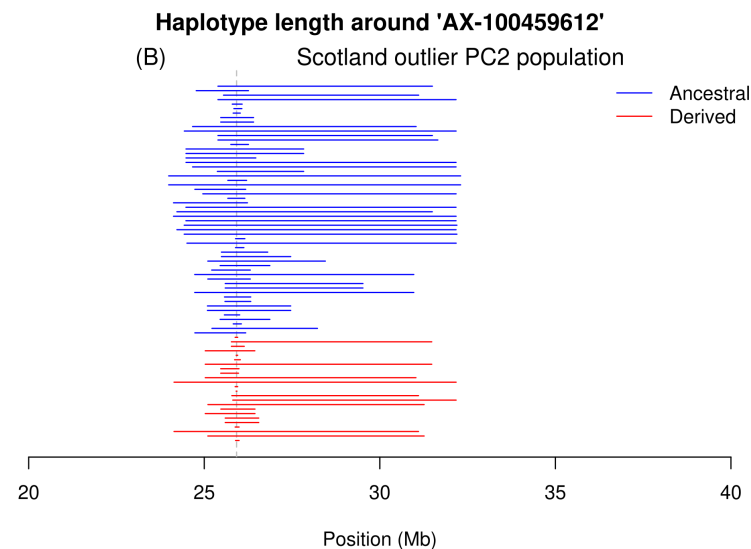
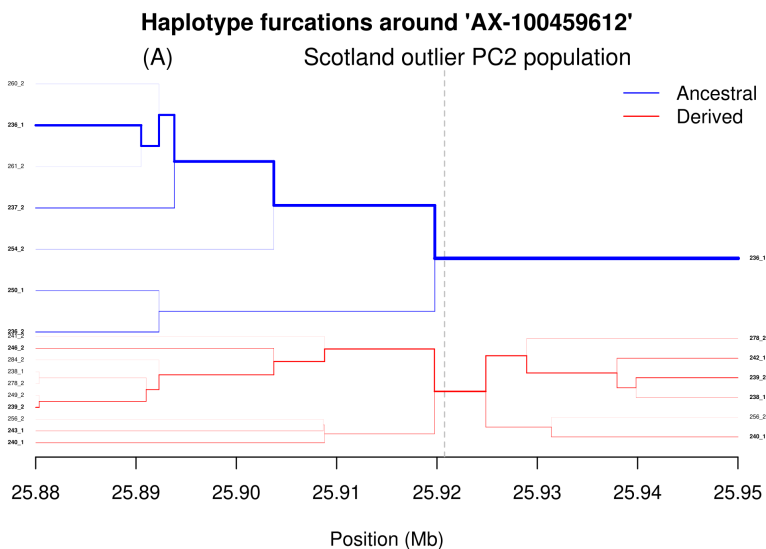


Figure S4.4: Furcation trees for all alleles around a focal SNP AX-100459612 in the Scotland outlier PC2 population (panel A) and core PC2 populations (panel C). Extended haplotype lengths around a focal SNP AX-100459612 in the Scotland outlier PC2 population (panel B) and core PC2 populations (panel D).

### AX-100681217

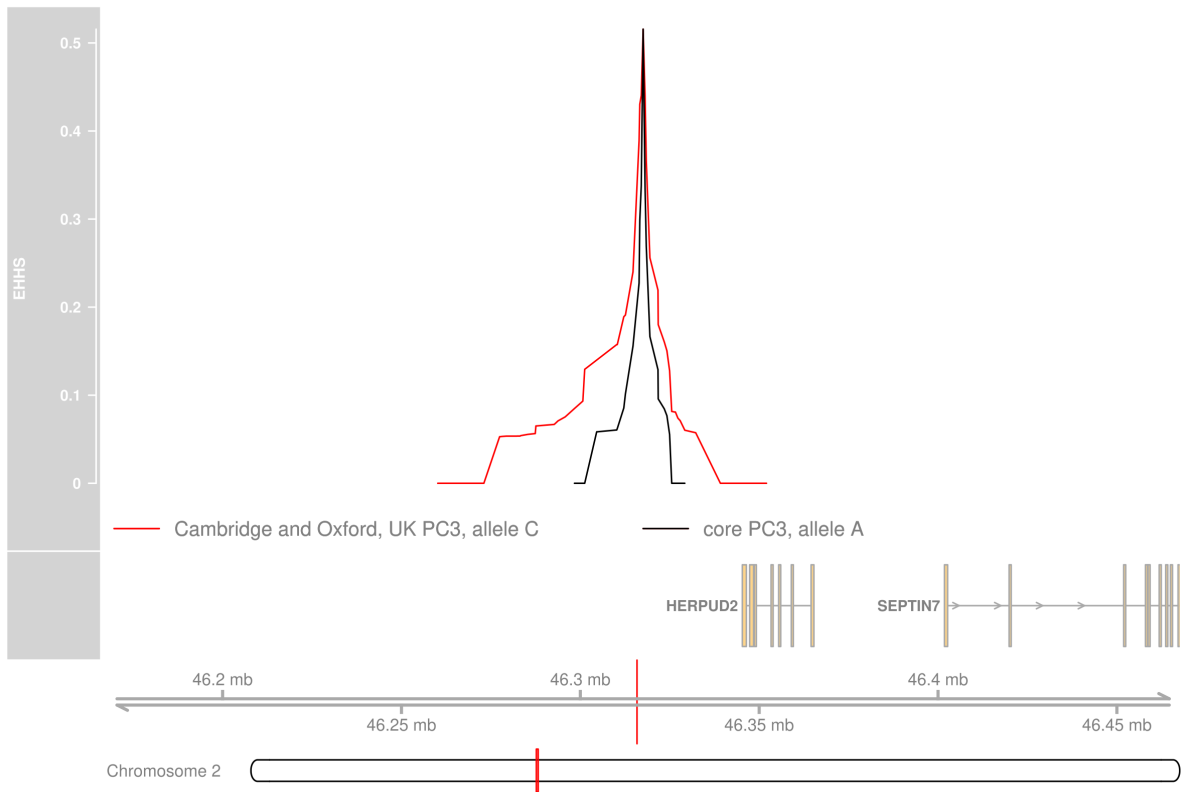


Figure S4.5: A selective sweep identified around focal SNP AX-100681217 in the Cambridge and Oxford populations.

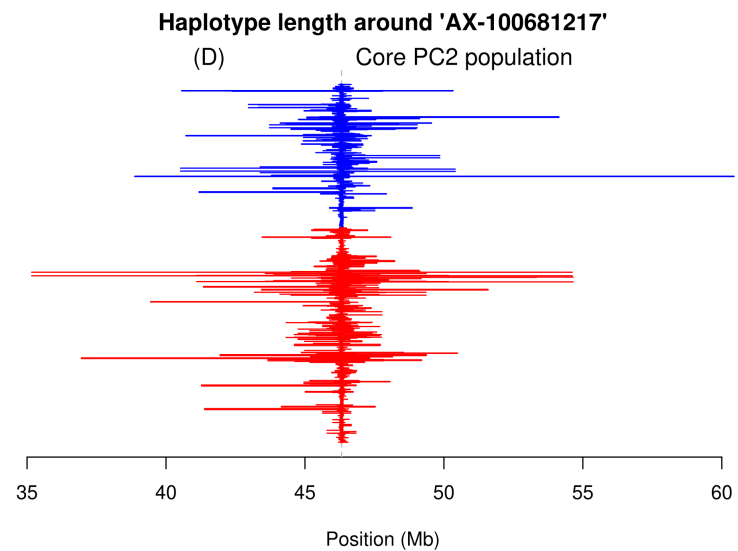
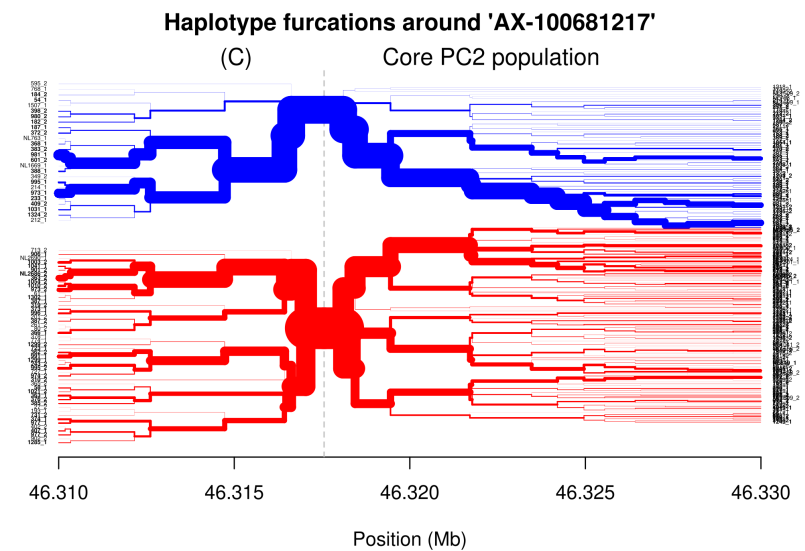
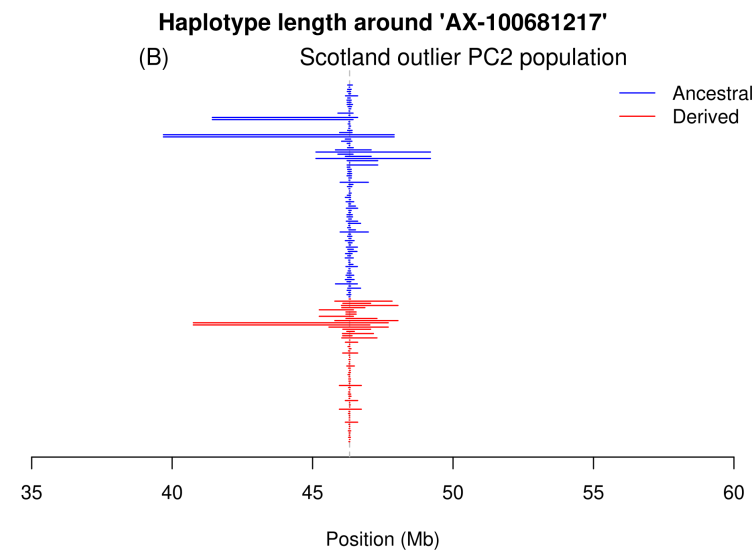
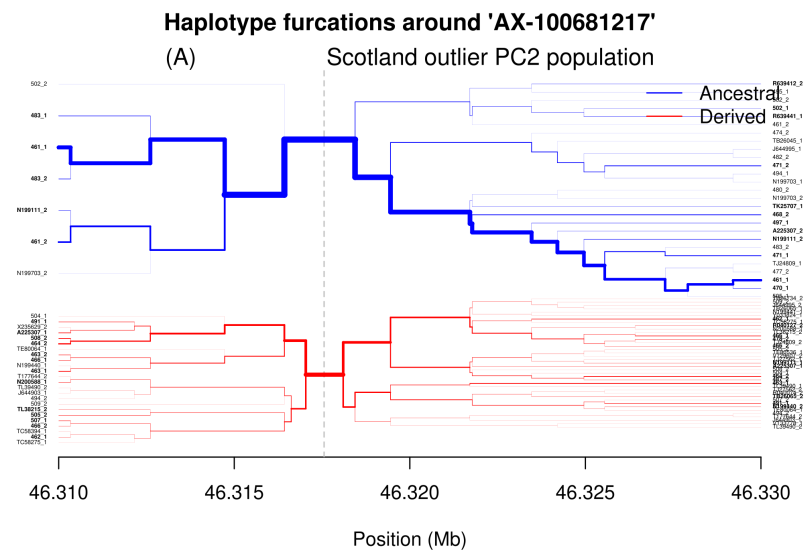


Figure S4.6: Furcation trees for all alleles around a focal SNP AX-100681217 in the Cambridge and Oxford outlier PC3 population (panel A) and core PC3 populations (panel C). Extended haplotype lengths around a focal SNP AX-100681217 in the Cambridge and Oxford outlier PC3 population (panel B) and core PC3 populations (panel D).