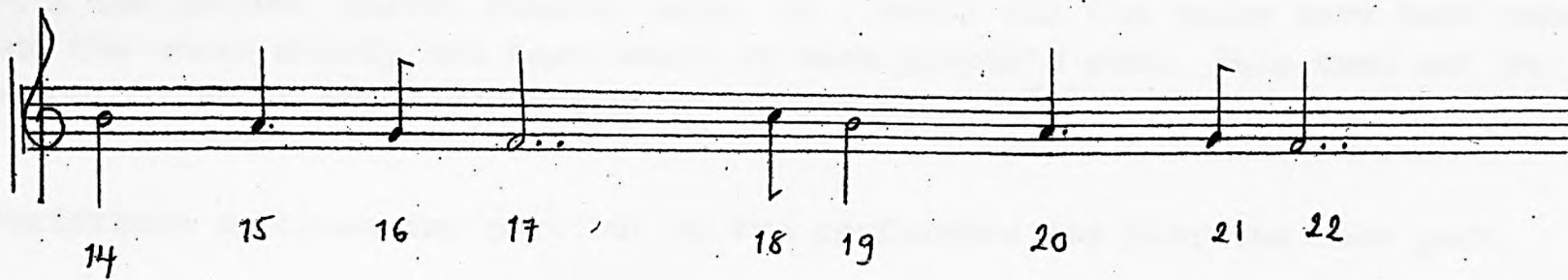


the enigma machine 3: archipelago

lauren redhead

**For:**

any multiple of music boxes from 2 - 8



## Performance Notes

Each performer needs a card long enough for the whole melody, and the ability to punch holes live.

The first iteration of the piece, for each performer, should be to feed the card without punching any holes.

This should take around 1cm/s.

This speed should remain fairly constant throughout the piece.

The performer then punches the first hole for their part, in the correct place, based on the number, and then feeds the card at the speed of 1cm/s, repeating this with the second, third, fourth, hole, &c., until all the holes have been punched and the whole melody has been heard in each player's part. This need not be synchronised in any way between the performers.

Performers may choose any part but no two performers may play the same part.

**Performer: Order in which to punch the pitches**

1: 4, 1, 2, 7, 22, 3, 19, 21, 16, 17, 13, 14, 10, 9, 5, 6, 20, 18, 15, 8, 11, 12  
2: 7, 5, 1, 15, 20, 18, 11, 21, 22, 2, 9, 6, 16, 12, 10, 3, 19, 17, 8, 14, 13, 4  
3: 10, 9, 15, 1, 4, 18, 7, 20, 11, 5, 2, 16, 21, 6, 22, 12, 3, 17, 19, 8, 14, 13  
4: 13, 14, 20, 21, 1, 7, 18, 11, 22, 19, 16, 2, 4, 12, 17, 6, 5, 3, 9, 8, 15, 10  
5: 16, 17, 15, 20, 5, 1, 7, 18, 11, 21, 22, 19, 2, 12, 9, 14, 8, 6, 3, 4, 20, 13  
6: 19, 21, 15, 22, 7, 9, 1, 18, 10, 4, 5, 11, 16, 2, 20, 17, 12, 8, 14, 3, 3, 13  
7: 22, 3, 6, 15, 18, 7, 9, 1, 20, 11, 10, 16, 21, 19, 2, 12, 17, 4, 8, 14, 13, 5  
8: 2, 7, 4, 15, 6, 5, 9, 20, 1, 18, 16, 10, 11, 21, 22, 19, 12, 17, 14, 8, 3, 13