

**Music as Aesthetic Paradigm: Frederic Leighton, Albert Moore, and James McNeill
Whistler**

**Two Volumes
Volume II**

Marte E. Stinis

PhD

University of York

History of Art

June 2021



Figure 1: Whistler, *Symphony in White, No. 3*, 1865-1867, oil on canvas, 52 x 76.5 cm, Barber Institute of Fine Arts, University of Birmingham.



Figure 2: Albert Moore, *The Musicians*, 1865-1867, oil on canvas, 28.6 x 38.7 cm, Yale Centre for British Art, New Haven.



Figure 3: Frederic Leighton, *Spanish Dancing Girl: Cadiz in the Olden Times*, 1867, oil on canvas, 86.3 x 137.2 cm, private collection.



Figure 4: Moore, *The Marble Seat*, 1865, oil on canvas, 47 x 74.6 cm, private collection.



Figure 5: Leighton, *Lieder ohne Worte*, 1860-1861, oil on canvas, 101.6 x 62.9 cm, Tate Britain London.



Figure 6: Leighton, *Golden Hours*, 1864, oil on canvas, 80 x 124.5 cm, private collection.



Figure 7: Moore, *A Quartet: A Painter's Tribute to the Art of Music, A.D. 1868, 1868*, oil on canvas, 59.6 x 87.5 cm, private collection.



Figure 8: Leighton, *Flaming June*, 1895, oil on canvas, 1.2 x 1.2 m, Museo de Arte de Ponce.



Figure 9: Dante Gabriel Rossetti, *Reverie*, 1868, chalk on paper, 82.8 x 71.1 cm, private collection.



Figure 10: Rossetti, *Silence*, 1870, black and red chalk on paper, 106.4 x 77.2 cm, The Brooklyn Museum, New York.



Figure 11: Moore, *Azaleas*, 1868, oil on canvas, 100.2 x 197.9 cm, Hugh Lane Gallery, Dublin.



Figure 12: Whistler, *Symphony in Grey and Green: The Ocean*, 1866-1872, oil on canvas, 80.6 x 101.9 cm, The Frick Collection, New York.



Figure 13: Whistler, *Harmony in Red: Lamplight*, 1884-1886, oil on canvas, 190.5 x 897 cm, The Hunterian, University of Glasgow.



Figure 14: Whistler, *Nocturne: Blue and Silver – Bognor*, 1874/1876, oil on canvas, 50.3 x 86.2 cm, Freer Gallery of Art, Washington, D.C.



Figure 15: Leighton, *A Girl Feeding Peacocks*, 1863, oil on canvas, 188 x 160 cm, private collection.



Figure 16: Rossetti, *The Blue Bower*, 1865, oil on canvas, 84 x 70.9 cm, The Barber Institute of Fine Arts.



Figure 17: Leighton, *The Fisherman and the Syren: From a Ballad by Goethe*, c. 1858-1859, oil on canvas, 66.3 x 48.7 cm, Bristol Museums and Art Gallery.



Figure 18: Leighton, *Elijah in the Wilderness*, c. 1877/1878, oil on canvas, 235 x 210.1 cm, Walker Art Gallery, Liverpool.



Figure 19: Leighton, *Cimabue's Celebrated Madonna Carried in Procession through the Streets of Florence*, 1853-1855, oil on canvas, 231.8 x 521.4 cm, Royal Collection Trust, on loan to the National Gallery of London.



Figure 20: Leighton, colour sketch for *The Triumph of Music*, c. 1855-1856, oil on canvas, 31 x 42 cm, Leighton House Museum, London.

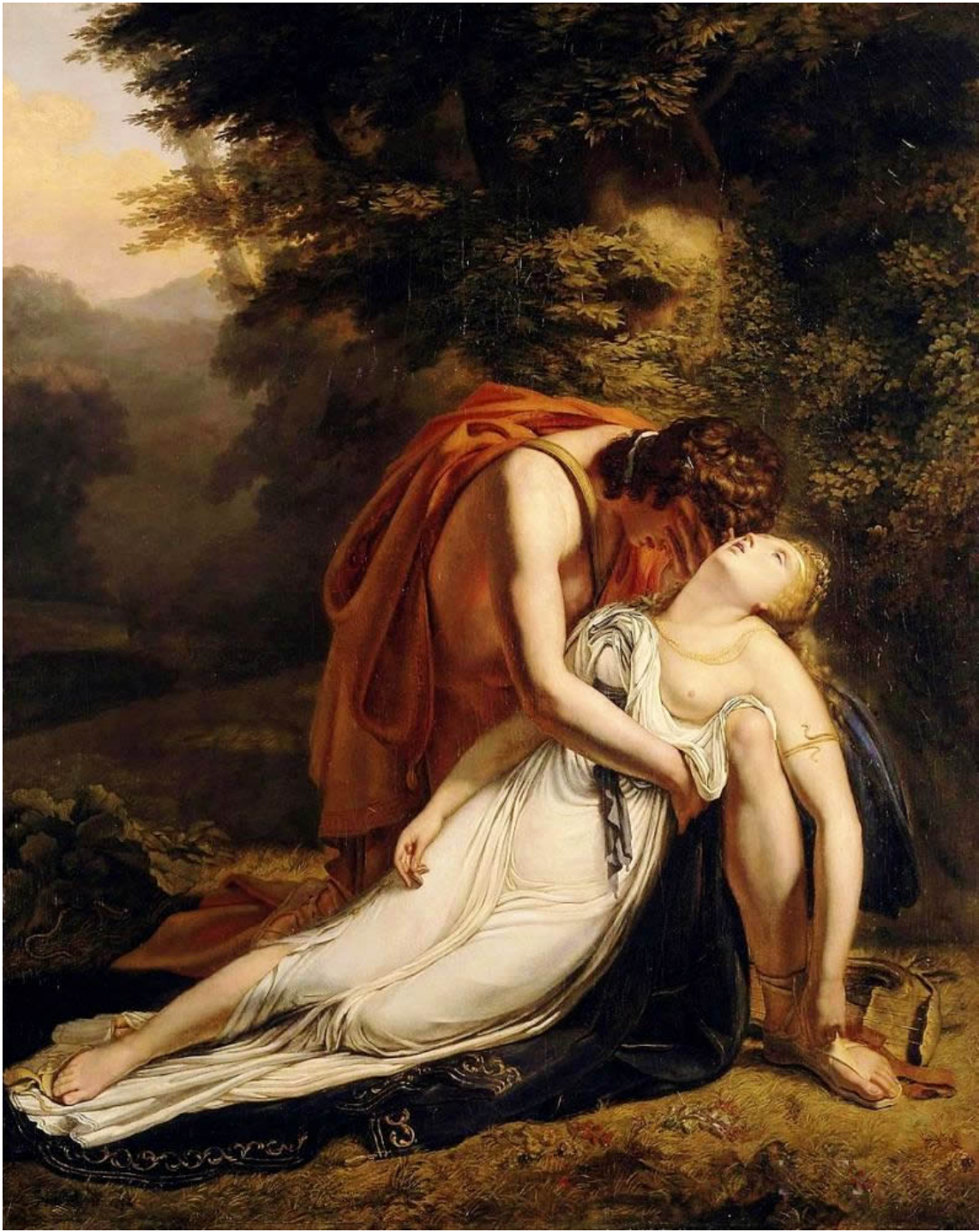


Figure 21: Ary Scheffer, *Orpheus Mourning the Death of Eurydice*, 1814, oil on canvas, exact dimensions and location unknown.



Figure 22: David Wilkie Wynfield, *Frederic, Lord Leighton*, c. 1860s, carbon print on mount with textured paper surface layer, 190 x 157 mm, Royal Academy of Arts, London.



Figure 23: Leighton, *Lachrymae*, 1894-1895, oil on canvas, 157.5 x 62.9 cm, The Metropolitan Museum of Art, New York.



Figure 24: Whistler, *At the Piano*, 1858-1895, oil on canvas, 67 x 90.5 cm, Taft Museum, Cincinnati.



Figure 25: Leighton, *Painter's Honeymoon*, c. 1863-1864, oil on canvas, 83.5 x 76.8 cm, Museum of Fine Arts, Boston.



Figure 26: Leighton, *The Music Lesson*, 1877, oil on canvas, 92.8 x 95.3 cm, Guildhall Art Gallery, London.



Figure 27: Leighton, *After Vespers*, 1871, oil on canvas, 111.5 x 71.5 cm, Princeton University Museum.



Figure 28: Leighton, *Garden of the Hesperides*, c. 1892, oil on canvas, 169.5 cm (circular), Lady Lever Art Gallery, Liverpool.



Figure 29: Leighton, *Idyll*, c. 1880-1881, oil on canvas, 104.1 x 212.1 cm, private collection.



Figure 30: Leighton, *Cymon and Iphigenia*, 1884, oil on canvas, 162.5 x 327.6 cm, The Art Gallery of New South Wales, Sydney.



Figure 31: Henri Fantin-Latour, *Hommage à Delacroix*, 1864, oil on canvas, 160 x 250 cm, Musée d'Orsay, Paris.



Figure 32: Fantin-Latour, *Autour du Piano*, 1885, oil on canvas, 160 x 222 cm, Musée d'Orsay Paris.



Figure 33: Leighton, *Summer Moon*, c. 1872, oil on canvas, 100.3 x 128.3 cm, private collection. Published in Mrs Russell Barrington, *The Life, Letters and Work of Frederic Leighton*, volume 2 (London: George Allen, 1906), illustration number 20.



Figure 34: Leighton, *The Daphnephoria*, 1876, oil on canvas, 2.31 x 5.25 m, Lady Lever Art Gallery.



Figure 35: Leighton, *Hercules Wrestling with Death for the Body of Alcestis*, 1869-1871, oil on canvas, 153 x 269 cm, Wadsworth Museum, Hartford.



Figure 36: Michelangelo Buonarroti, *Night*, marble, 155 x 150 cm, 194 cm diagonally, Sagrestia Nuova in the Basilica di San Lorenzo, Florence.

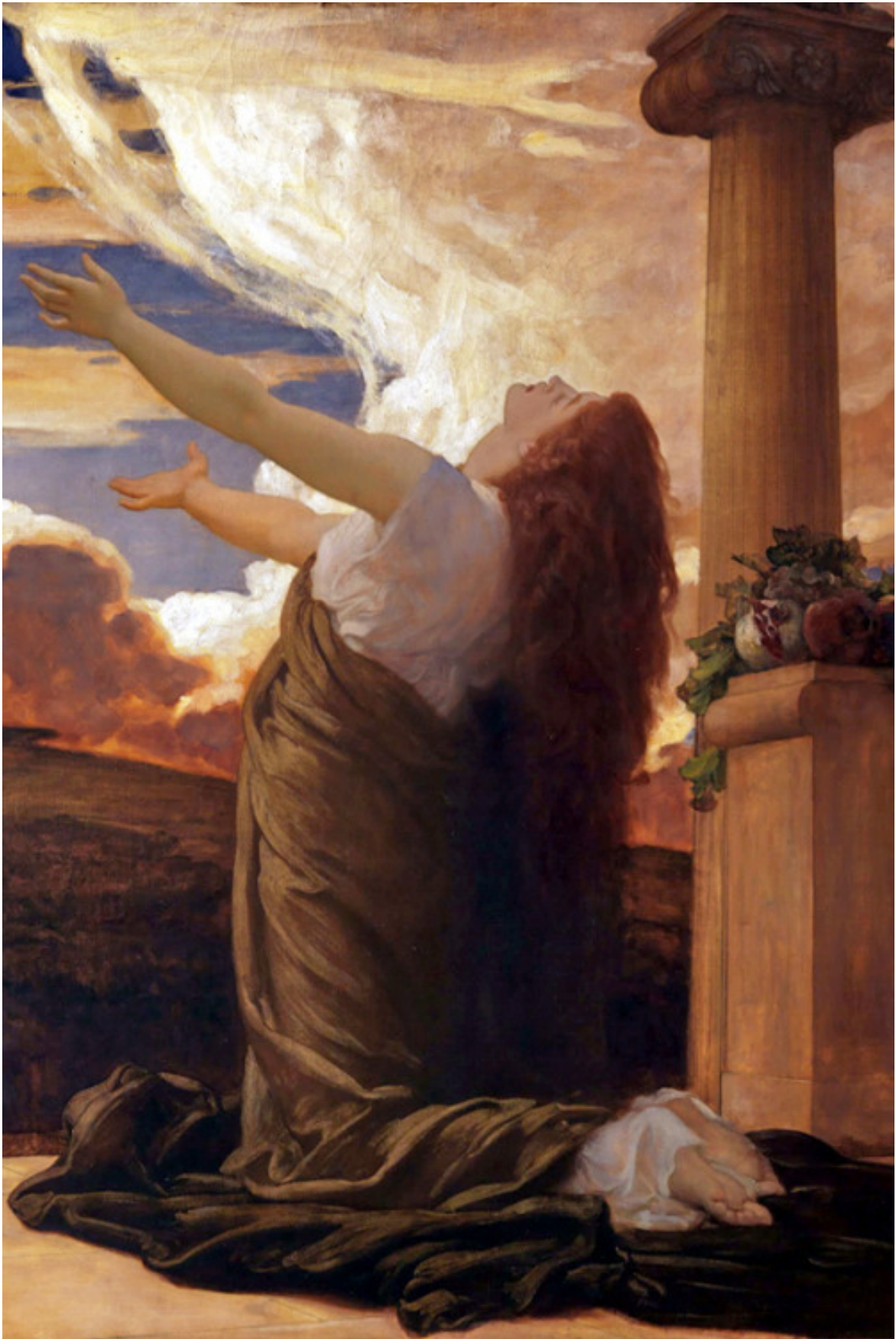


Figure 37: Leighton, *Clytie*, 1895-1896, oil on canvas, 156 x 137 cm, Leighton House Museum.



Figure 38: Moore, *The Shulamite*, 1864-1866, oil on canvas, 97 x 214 cm, Walker Art Gallery.



Figure 39: Moore, *Birds*, 1878, oil on canvas, 155.4 x 65.3 cm, Birmingham Museums and Art Gallery.



Figure 40: Moore, *The End of the Story*, 1877, oil on canvas, 87.5 x 33 cm, private collection.

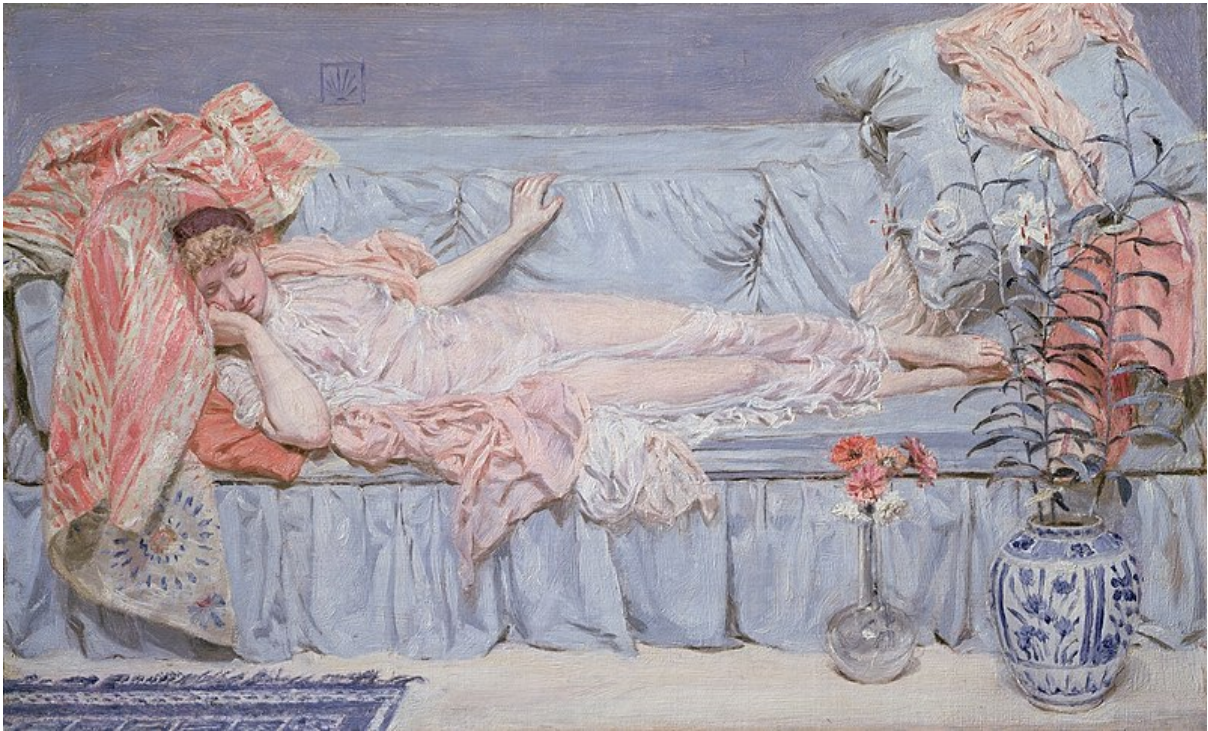


Figure 41: Moore, *Lilies*, 1866, oil on canvas, 29.7 x 47.9 cm, Clark Art Institute, Williamstown.



Figure 42: Moore, *Dreamers*, 1879-1882, oil on canvas, 68.5 x 119.2 cm, Birmingham Museums and Art Gallery.



Figure 43: Moore, *Red Berries*, 1884, oil on canvas, 47.6 x 116.7 cm, private collection.



Figure 44: Moore, *Idyll*, 1892-1893, oil on canvas, 86.3 x 79.9 cm, Manchester City Art Gallery.



Figure 45: Moore, *A Reverie*, 1892, oil on canvas, 116.7 x 74.8 cm, private collection.



Figure 46: Moore, *Midsummer*, 1887, oil on canvas, 158.6 x 152.2 cm, Russell-Cotes Art Gallery, Bournemouth.



Figure 47: Moore, *Jasmine*, 1880, oil on canvas, 66.6 x 50.1 cm, Watts Gallery, Compton.



Figure 48: Moore, *Reading Aloud*, 1884, oil on canvas, 107.2 x 205.5 cm, Glasgow Art Gallery and Museum.



Figure 49: Moore, *Apples*, 1875, oil on canvas, 29.2 x 50.7 cm, private collection.



Figure 50: Moore, *Beads*, 1875, oil on canvas, 28.9 x 50.1 cm, National Gallery of Scotland, Edinburgh.



Figure 51: Moore, *A Sofa*, 1875, oil on canvas, 28.9 x 50.1 cm, private collection.



Figure 52: Edward Burne-Jones, *The Golden Stairs*, 1876-1880, oil on canvas, 269.2 x 116.8 cm, Tate Britain.



Figure 53: Moore, *Summer Night*, 1884-1886, oil on canvas, 132 x 228.5 cm, Walker Art Gallery.



Figure 54: Moore, *An Embroidery*, 1881, oil on canvas, 33.6 x 13 cm, private collection.



Figure 55: Moore, *Study for Figure in 'The Dreamers'*. Published in Frederick Dolman, "The Story of a Picture: 2. Albert Moore's 'The Dreamers'", *The English Illustrated Magazine* 15 (June 1904): 225.



Figure 56: Moore, *Acacias*, c. 1880, oil on canvas, 58.4 x 38.1 cm, Carnegie Museum of Art, Pittsburgh.

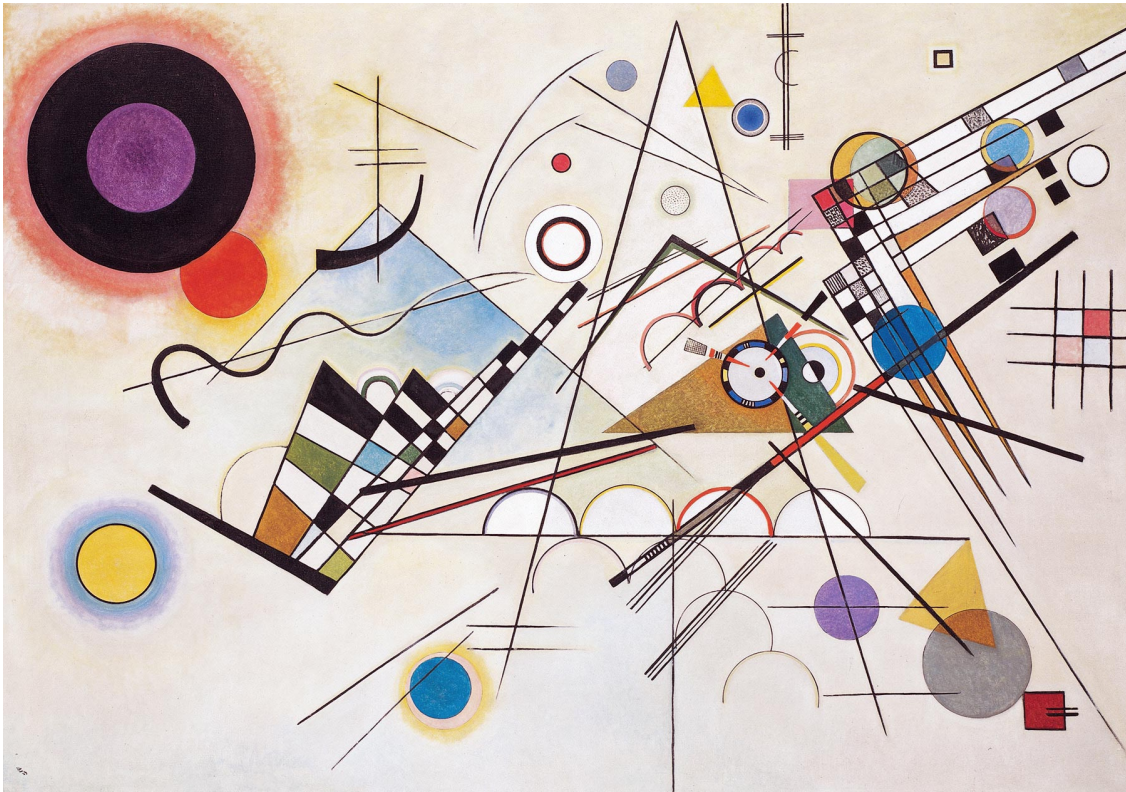


Figure 57: Wassily Kandinsky, *Composition VIII*, 1923, oil on canvas, 55.1 x 79.1 cm, The Solomon R. Guggenheim Museum, New York.



Figure 58: Paul Klee, *Harmony of Rectangles with Red, Yellow, Blue, White and Black*, oil on primed cardboard, 69.7 x 50.6 cm, Zentrum Paul Klee, Bern.



Figure 59: Moore, *A Yellow Room*, 1885, pencil, watercolour and bodycolour on paper, 38.1 x 15.2 cm, private collection.



Figure 60: Moore, *Cartoon for 'White Hydrangea' with the Background of 'A Yellow Room'*, c. 1885, charcoal on grey paper, 88.2 x 38.9 cm, Victoria and Albert Museum, London.



Figure 61: Whistler, *Variations in Flesh Colour and Green: The Balcony*, 1864-1872, oil on wood, 61.4 x 48.8 cm, Freer Gallery of Art, Washington, D.C.



Figure 62: Whistler, *Variations in Blue and Green*, c. 1868, oil on millboard mounted on wood, 46.9 x 61.9 cm, Freer Gallery of Art.



Figure 63: Whistler, *Symphony in White and Red*, c. 1868, oil on millboard mounted on wood, 46.8 x 61.9 cm, Freer Gallery of Art.



Figure 64: Whistler, *Symphony in Blue and Pink*, c. 1868, oil on millboard mounted on wood, 46.7 x 61.9 cm, Freer Gallery of Art.



Figure 65: Whistler, *Symphony in Green and Violet*, c. 1868, oil on millboard mounted on wood, 61.9 x 45.8 cm, Freer Gallery of Art.



Figure 66: Whistler, *The White Symphony: Three Girls*, 1867/1869, oil on millboard mounted on wood, 46.4 x 61.6 cm, Freer Gallery of Art.



Figure 67: Whistler, *Venus*, c. 1868, oil on millboard mounted on wood, 61.9 x 45.6 cm, Freer Gallery of Art.



Figure 68: Whistler, *Nocturne: Blue and Silver – Cremorne Lights*, 1872, oil on canvas, 50.2 x 74.9 cm, Tate Britain.



Figure 69: Whistler, *Nocturne in Blue and Silver*, 1871/1872, oil on canvas, 44.4 x 60.3 cm, Fogg Art Museum, Harvard University.



Figure 70: Whistler, *Nocturne*, 1875/1878, oil on canvas, 39.4 x 62.9 cm, Isabella Stewart Gardner Museum, Boston.



Figure 71: Whistler, *Symphony in White, No. 1: The White Girl*, 1861-1863, oil on canvas, 2.14 x 1.08 m, National Gallery of Art, Washington, D.C.



Figure 72: Whistler, *Symphony in White, No. 2: The Little White Girl*, 1864, oil on canvas, 76 x 51 cm, Tate Britain.

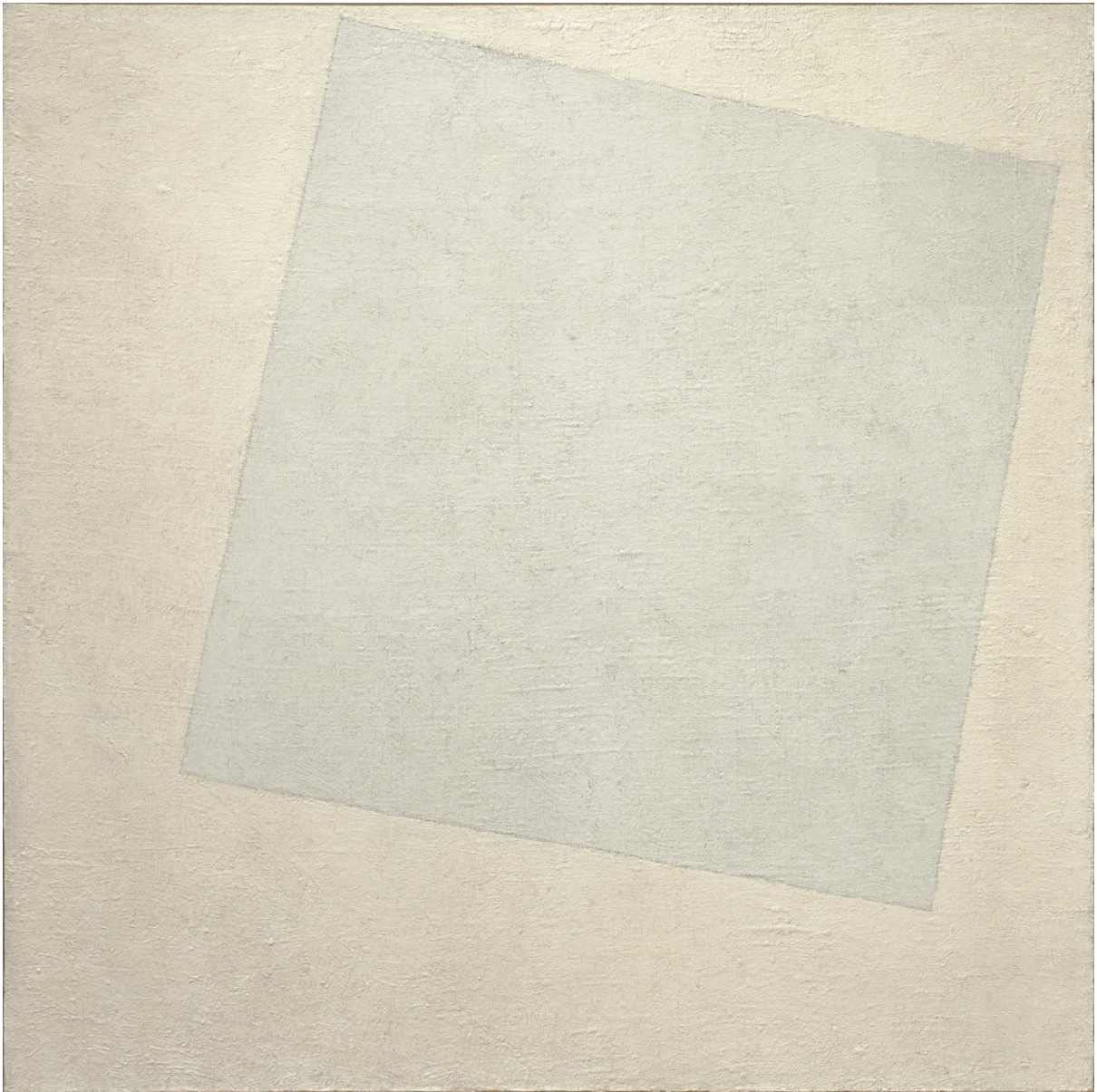


Figure 73: Kazimir Malevich, *White on White*, 1918, oil on canvas, 79 x 79 cm, The Museum of Modern Art, New York.

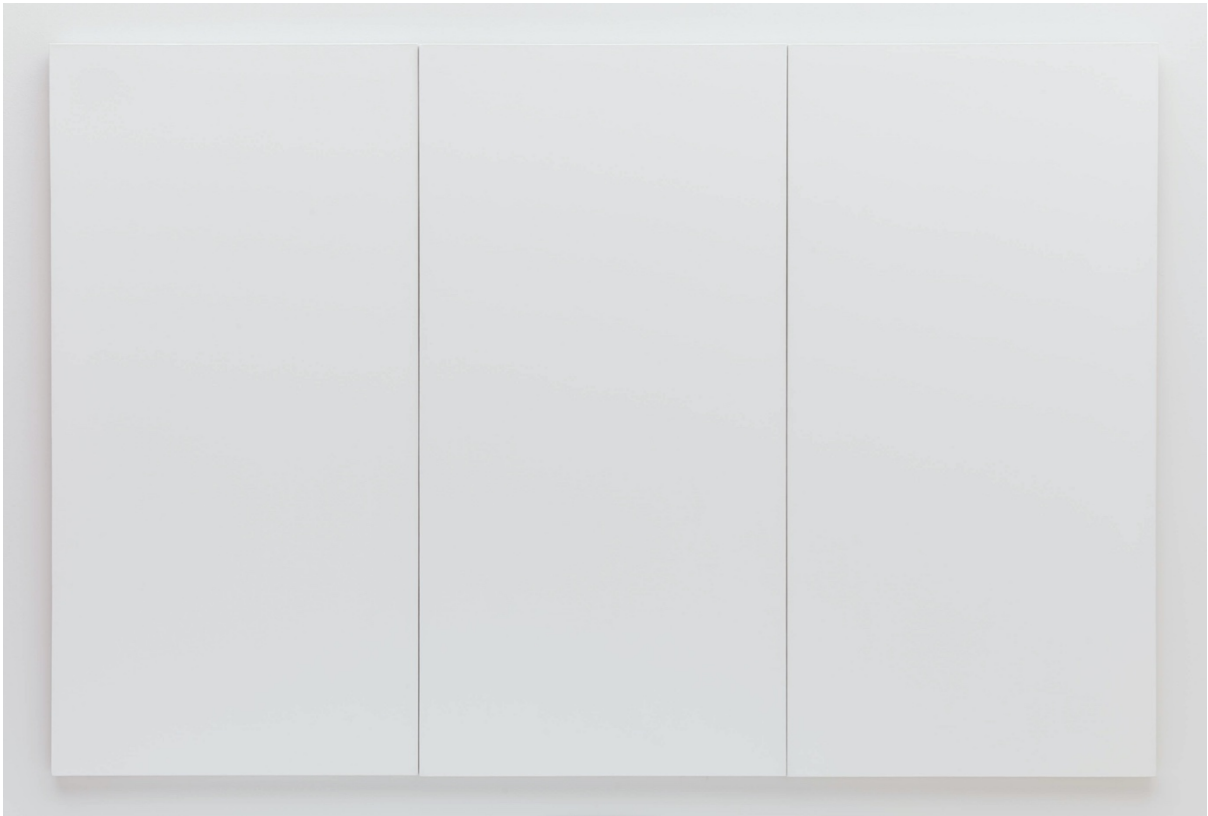


Figure 74: Robert Rauschenberg, *White Painting (Three Panel)*, 1951, latex paint on canvas, 1.83 x 2.74 m, San Francisco Museum of Modern Art.



Figure 75: Whistler, *Nocturne: Blue and Silver – Chelsea*, 1871, oil on wood, 50.2 x 60.8 cm, Tate Britain.



Figure 76: Whistler, *Variations in Violet and Green*, 1871, oil on canvas, 61 x 35.5 cm, Musée d'Orsay, Paris.



Figure 77: Whistler, *Crepuscule in Opal: Trouville*, 1865, oil on canvas, 34 x 45.7 cm, Toledo Museum of Art, Ohio.



Figure 78: Whistler, *Sea and Rain*, 1865, oil on canvas, 50.8 x 72.7 cm, Museum of Art, University of Michigan, Ann Arbor.



Figure 79: Whistler, *Harmony in Blue and Silver: Trouville*, 1865, oil on canvas, 49.5 x 75.5 cm, Isabella Stewart Gardner Museum.



Figure 80: Whistler, *Blue and Silver: Trouville*, 1865, oil on millboard, 59.1 x 72.4 cm, Freer Gallery of Art.



Figure 81: Whistler, *Nocturne in Blue and Gold: Valparaiso Bay*, 1866-1874, oil on canvas, 75.6 x 75.9 cm, Tate Britain.



Figure 82: Whistler, *Crepuscule in Flesh Colour and Green: Valparaiso*, 1866, oil on canvas, 58.6 x 75.9 cm, Tate Britain.



Figure 83: Whistler, *Nocturne: Blue and Gold – Southampton Water*, 1872, oil on canvas, 50 x 76 cm, Art Institute of Chicago.



Figure 84: James Tissot, *On the Thames (How Happy I Could Be With Either?)*, c. 1876, oil on canvas, 74.8 x 118 cm, The Hepworth Wakefield.



Figure 85: Whistler, *Nocturne in Grey and Gold – Westminster Bridge*, 1872/1874, oil on canvas, 47 x 62.3 cm, Burrell Collection, Glasgow Museums.



Figure 86: Whistler, *Nocturne in Blue and Silver*, 1875/1878, oil on canvas, 44.4 x 61 cm, Yale Centre for British Art.



Figure 87: Whistler, *Nocturne: Silver and Opal – Chelsea*, 1884, oil on wood, 20.3 x 25.7 cm, Freer Gallery of Art.



Figure 88: Whistler, *Nocturne: Blue and Gold – Old Battersea Bridge*, 1872-1875, oil on canvas, 68 x 51 cm, Tate Britain.



Figure 89: Whistler, *Nocturne – Trafalgar Square, Snow*, 1875/1876, oil on canvas, 47.2 x 62.5 cm, Fogg Art Museum.



Figure 90: Whistler, *Nocturne: Grey and Gold – Chelsea Snow*, 1876, oil on canvas, 47.2 x 62.5 cm, Fogg Art Museum.



Figure 91: Whistler, *Nocturne: Blue and Gold – St Mark's Venice*, 1879/1880, oil on canvas, 44.5 x 59.7 cm, National Museum of Wales, Cardiff.



Figure 92: Whistler, *Nocturne: Blue and Silver – Battersea Reach*, 1875/1878, oil on canvas, 39.4 x 62.9 cm, Isabella Stewart Gardner Museum.

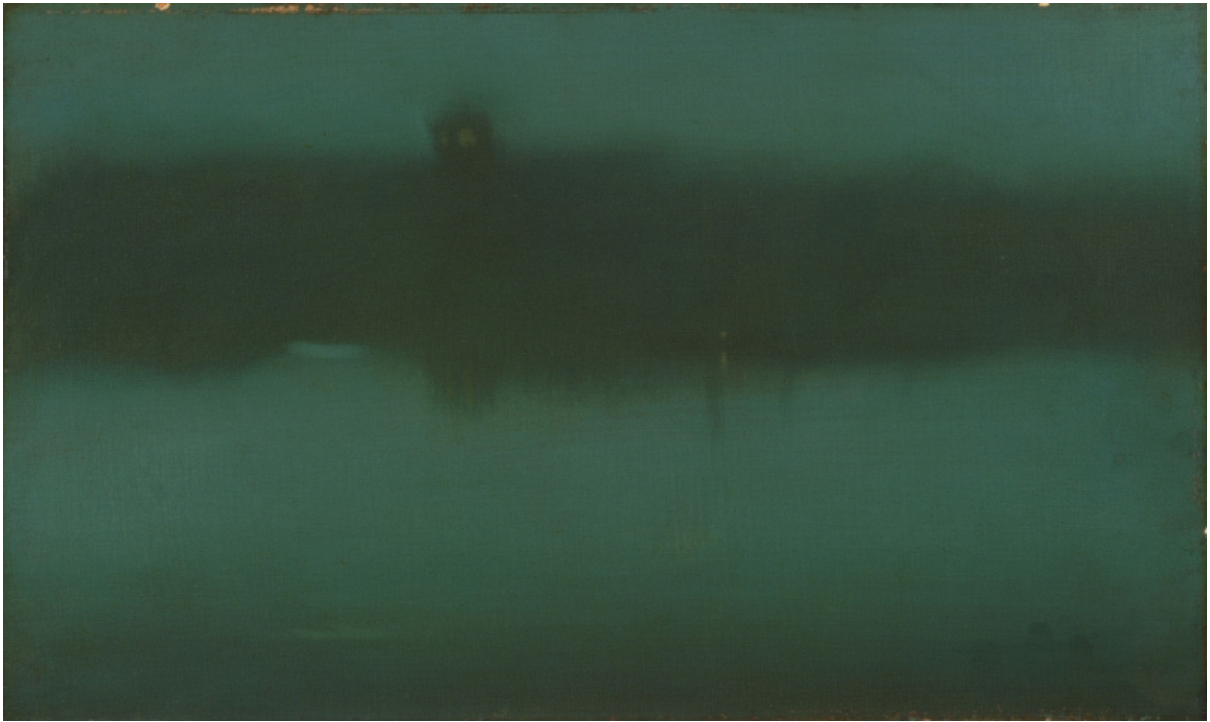


Figure 93: Whistler, *Nocturne: Grey and Silver*, 1875/1878, oil on canvas, 31.1 x 51.8 cm, Philadelphia Museum of Art.



Figure 94: Whistler, *Nocturne: Black and Gold – The Fire Wheel*, 1875/1877, oil on canvas, 54.3 x 76.2 cm, Tate Britain.



Figure 95: Whistler, *Nocturne in Black and Gold – The Falling Rocket*, 1875, oil on panel, 60.3 x 46.6 cm, Detroit Institute of Arts.



Figure 95: Whistler, *Sunset; Red and Gold – The Gondolier*, 1880, chalk and pastel on brown wove paper, 19.2 x 28.5 cm, Fogg Art Museum.



Figure 96: Whistler, *The Bridge; Flesh Colour and Brown*, 1879/1880, chalk and pastel on brown wove paper, 29.3 x 19.7 cm, Burrell Collection, Glasgow Museums.



Figure 97: Whistler, *Note in Pink and Brown*, 1880, charcoal and pastel on brown wove paper, 29.8 x 18.4 cm, Metropolitan Museum of Art.



Figure 98: Whistler, *Arrangement in Black: La Dame au brodequin jaune – Portrait of Lady Archibald Campbell*, 1882-1885, oil on canvas, 218.4 x 110.5 cm, Philadelphia Museum of Art.



Figure 99: Whistler, *Harmony in Blue and Gold: The Peacock Room*, 1876-1877, oil paint and gold leaf on leather and wood, 4121.6 x 613.4 x 1026.2 cm, Freer Gallery of Art.