

SERVANTS' PASSAGE:
Cultural identity in the architecture of service
in British and American country houses
1740-1890

2 Volumes
Volume 2 of 2

Aimée L Keithan
PhD

University of York
Archaeology
March 2020

List of Illustrations

Figure 2.1: Uppark in the early-eighteenth century ('Up Parke in Sussex' by Leonard Knyff and Johannes Kip, 1707 in <i>Britannia Illustrata</i>)	278
Figure 2.2: Uppark west façade (Used by permission © National Trust Images/Andrew Butler)	278
Figure 2.3: Uppark south façade	279
Figure 2.4: Uppark east façade (© Ian Capper, cc-by-sa/2.0)	279
Figure 2.5: Uppark c1730 Phase 1 basement floor plan (based on Aldsworth 2015)	280
Figure 2.6: Uppark c1730 Phase 1 ground floor plan (based on Aldsworth 2015)	281
Figure 2.7: Uppark c1730 Phase 1 first floor plan (based on Aldsworth 2015)	282
Figure 2.8: Uppark c1730 Phase 1 second floor plan (based on Aldsworth 2015)	283
Figure 2.9: An early eighteenth-century view of Uppark by Pieter Tillemans, 1684-1734 (Used by permission © National Trust Images/ John Hammond)	284
Figure 2.10: Uppark c1750s Phase 2 basement floor plan (based on Aldsworth 2015)	285
Figure 2.11: Uppark c1750s Phase 2 ground floor plan (based on Aldsworth 2015)	266
Figure 2.12: Uppark c1750s Phase 2 first floor plan (based on Aldsworth 2015)	287
Figure 2.13: Uppark c1750s Phase 2 second floor plan (based on Aldsworth 2015)	288
Figure 2.14: Uppark c1780 estate plan (Aldsworth 2015, 163)	289
Figure 2.15: Uppark kitchen building (© Paul Gillett, cc-by-sa/2.0)	289
Figure 2.16: Uppark north façade by Henry Repton c1810s (Used by permission © National Trust Images/Andrew Butler)	290
Figure 2.17: Calke Abbey east façade (© Oliver Mills, cc-by-sa/2.0)	290
Figure 2.18: Calke Abbey south façade (© Philip Halling, cc-by-sa/2.0)	291
Figure 2.19: Calke Abbey west façade (© Alan Murray-Rust, cc-by-sa/2.0)	291
Figure 2.20: Calke Abbey c1704 Phase 1 ground floor plan	292

Figure 2.21: Calke Abbey c1704 Phase 1 first floor plan	293
Figure 2.22: Calke Abbey c1704 Phase 1 second floor plan	294
Figure 2.23: Calke Abbey estate map (© Crown Copyright and Landmark Information Group Limited (2020). All rights reserved. (1900)	295
Figure 2.24: Brodsworth Hall east side (© Tony Bacon, cc-by-sa/2.0)	295
Figure 2.25: Brodsworth Hall southwest (© JThomas, cc-by-sa/2.0)	296
Figure 2.26: Brodsworth Hall service wing east side (© Steve McShane, cc-by-sa/2.0)	296
Figure 2.27: Brodsworth Hall basement floor plan (based on English Heritage)	297
Figure 2.28: Brodsworth Hall ground floor plan (based on English Heritage)	298
Figure 2.29: Brodsworth Hall first floor plan (based on English Heritage)	299
Figure 2.30: Brodsworth Hall estate map (© Crown Copyright and Landmark Information Group Limited (2020). All rights reserved. (1900)	300
Figure 2.31: Calke Abbey c1794 Phase 2 ground floor plan	301
Figure 2.32: Calke Abbey c1794 Phase 2 first floor plan	302
Figure 2.33: Calke Abbey c1794 Phase 2 second floor plan	303
Figure 2.34: Uppark c1873 estate plan (Aldsworth 2015, 168)	304
Figure 2.35: Uppark c1810s Phase 3 basement floor plan (based on Aldsworth 2015)	305
Figure 2.36: Uppark c1810s Phase 3 ground floor plan (based on Aldsworth 2015)	306
Figure 2.37: Uppark c1810s Phase 3 first floor plan (based on Aldsworth 2015)	307
Figure 2.38: Uppark c1810s Phase 3 second floor plan (based on Aldsworth 2015)	308
Figure 2.39: Brodsworth Hall laundry (original brewhouse) (Doncaster Metropolitan Borough Council 2010 <i>Application for Conversion</i>)	309
Figure 2.40: Calke Abbey c1860 Phase 3 ground floor plan	310
Figure 2.41: Calke Abbey c1860 Phase 3 first floor plan	311
Figure 2.42: Calke Abbey c1860 Phase 3 second floor plan	312
Figure 2.43: Uppark c1730 estate plan with tunnel to original kitchen (Aldsworth 2015, 148)	313

Figure 2.44: Uppark red baize door in stair hall (Used by permission © National Trust Images/Andreas von Einsiedel)	313
Figure 2.45: Calke Abbey stables (© Phil Myott, cc-by-sa/2.0)	314
Figure 2.46: Calke Abbey orangery greenhouse (Used by permission © National Trust Images/Jemma Finch)	314
Figure 3.1: Kiplin Hall from the east	315
Figure 3.2: Kiplin Hall estate map 2019 (© Crown Copyright and Landmark Information Group Limited (2020). All rights reserved. (2019)	315
Figure 3.3: Kiplin Hall east façade (© Madmedea, cc-by-sa/2.5)	316
Figure 3.4: Kiplin Hall southeastern view (© DS Pugh, cc-by-sa/2.0)	317
Figure 3.5: Kiplin Hall west façade (© Bill Harrison, cc-by-sa/2.0)	317
Figure 3.6: Kiplin Hall north façade and reconstructed tower	318
Figure 3.7: Kiplin Hall kitchens east façade	318
Figure 3.8: Kiplin Hall kitchens view from southwest	319
Figure 3.9: Kiplin Hall service link with clock tower	319
Figure 3.10: Kiplin survey map c1723 (detail) (Used by permission NYCRO ZBL M/1)	320
Figure 3.11: Kiplin Hall conjectural plan c1625	320
Figure 3.12: Portrait of Cecil Calvert (National Trust Library Historic Postcard Collection, Special Collections, University of Maryland Libraries)	321
Figure 3.13: Kiplin Hall c1740 Phase 1 ground floor plan	322
Figure 3.14: Kiplin Hall c1740 Phase 1 first floor plan	323
Figure 3.15: Kiplin Hall c1740 Phase 1 second floor plan	324
Figure 3.16: Kiplin Hall c1780 by George Cuit the Elder (detail) (Kiplin Hall Trust)	325
Figure 3.17: Kiplin Hall first floor ‘servants’ corridor	325
Figure 3.18: Kiplin Hall c1820 Phase 2 ground floor plan	326
Figure 3.19: Kiplin Hall c1820 Phase 2 first floor plan	327
Figure 3.20: Kiplin Hall c1820 Phase 2 second floor plan	328
Figure 3.21: Kiplin Hall estate map 1857 (© Crown Copyright and Landmark Information Group Limited (2020). All rights reserved. (1857)	329
Figure 3.22: Kiplin Hall from the southeast c1867 (Kiplin Hall Trust)	330

Figure 3.23: Kiplin tithe map (Used by permission NYCRO T [MIC 1795/185-190])	330
Figure 3.24: Kiplin Hall c1890 Phase 3 ground floor plan	331
Figure 3.25: Kiplin Hall c1890 Phase 3 first floor plan	332
Figure 3.26: Kiplin Hall c1890 Phase 3 second floor plan	333
Figure 3.27: Kiplin Hall north tower c1867 (Kiplin Hall Trust)	334
Figure 3.28: Kiplin Hall ‘housekeepers link’ in 1976 (Kiplin Hall Trust)	334
Figure 3.29: Kiplin Hall north tower staircase demolition 1976 (Kiplin Hall Trust)	335
Figure 3.30: Kiplin Hall estate map 1893 (© Crown Copyright and Landmark Information Group Limited (2020). All rights reserved. (1893)	335
Figure 3.31: Kiplin Hall stables (© Bill Harrison, cc-by-sa/2.0)	336
Figure 4.1: Mount Vernon entrance and Circle Drive (Carol M. Highsmith / Public domain)	336
Figure 4.2: Mount Vernon Mansion north façade, Palladian window	337
Figure 4.3: Mount Vernon Mansion from southeast (Carol M. Highsmith / Public domain)	337
Figure 4.4: Mount Vernon modern estate map (Mount Vernon Ladies’ Association)	338
Figure 4.5: Mount Vernon servants’ hall (right) and gardener’s house (left)	338
Figure 4.6: Mount Vernon kitchen (left) and storehouse (right)	339
Figure 4.7: Mount Vernon north colonnade	339
Figure 4.8: Mount Vernon gardener’s house east side with half-hipped and half-gable roof	340
Figure 4.9: Mount Vernon salt house	340
Figure 4.10: Mount Vernon smokehouse	341
Figure 4.11: Mount Vernon spinning house	341
Figure 4.12: Mount Vernon washhouse	342
Figure 4.13: Mount Vernon stable	342
Figure 4.14 Mount Vernon greenhouse and enslaved peoples’ quarters (© Martin Falbisoner, cc-by-sa/3.0)	343
Figure 4.15: Mount Vernon c1759 Phase 1 ground floor plan	344
Figure 4.16: Mount Vernon c1759 Phase 1 first floor plan	345

Figure 4.17: Mount Vernon c1759 Phase 1 second floor plan	346
Figure 4.18: Mount Vernon c1775 estate map (Mount Vernon Ladies' Association)	347
Figure 4.19: The 'Vaughan Plan' of Mount Vernon by Samuel Vaughan c1787 (Mount Vernon Ladies' Association)	348
Figure 4.20: 'East Front of Mount Vernon' by Edward Savage c1787-1792 (House for Families, right) (Mount Vernon Ladies' Association)	349
Figure 4.21: Mount Vernon conjectural plan c1752	349
Figure 4.22: Mount Vernon c1793 estate map (Mount Vernon Ladies' Association)	350
Figure 4.23: Mount Vernon c1799 Phase 2 basement floor plan	351
Figure 4.24: Mount Vernon c1799 Phase 2 ground floor plan	352
Figure 4.25: Mount Vernon c1799 Phase 2 first floor plan	353
Figure 4.26: Mount Vernon c1799 Phase 2 second floor plan	354
Figure 5.1: Kingscote from the southwest (<i>Historic American Buildings Survey</i> , HABS No. RI-307)	355
Figure 5.2: Kingscote 1969 estate map (<i>Historic American Buildings Survey</i> , HABS No. RI-307)	355
Figure 5.3: Kingscote south elevation	356
Figure 5.4: Kingscote east elevation (<i>Historic American Buildings Survey</i> , HABS No. RI-307)	356
Figure 5.5: Kingscote McKim, Mead and White addition (© Dms1788, cc by-sa/4.0)	357
Figure 5.6: Kingscote service wings (left)	357
Figure 5.7: Kingscote carriage house © Jllm06, cc0/1.0)	358
Figure 5.8: Kingscote c1859 Phase 1 ground floor plan	359
Figure 5.9: Kingscote c1859 Phase 1 first floor plan	360
Figure 5.10: Kingscote c1859 Phase 1 second floor plan	361
Figure 5.11: Kingscote c1839 preliminary sketch by Richard Upjohn (<i>Historic American Buildings Survey</i> , HABS No. RI-307)	362
Figure 5.12: Kingscote 1850 estate map (detail, <i>Map of the City of Newport</i> , RI, Matthew Dripps, NY and B. I. Tilley, Newport. From the collections of the Newport Historical Society)	362

Figure 5.13: Kingscote servant door (detail)	363
Figure 5.14: Kingscote family door (detail)	363
Figure 5.15: Kingscote 1878 Phase 2 ground floor plan	364
Figure 5.16: Kingscote 1878 Phase 2 first floor plan	365
Figure 5.17: Kingscote 1878 Phase 2 second floor plan	366
Figure 5.18: Kingscote painted glass window, original dining room	367
Figure 5.19: Kingscote 1878 south elevation, laundry addition left (from the collection of The Preservation Society of Newport County)	367
Figure 5.20: Kingscote c1880 painting by John Newell (from the collection of The Preservation Society of Newport County)	368
Figure 5.21: Kingscote c1839 watercolour by Richard Upjohn (<i>Historic American Buildings Survey</i> , HABS No. RI-307)	368
Figure 5.22: Kingscote c1882 Phase 3 ground floor plan	369
Figure 5.23: Kingscote c1882 Phase 3 first floor plan	370
Figure 5.24: Kingscote c1882 Phase 3 second floor	371
Figure 5.25: Kingscote McKim, Mead and White dining room (from the collection of The Preservation Society of Newport County)	372
Figure 5.26: Kingscote McKim, Mead and White dining room (<i>Historic American Buildings Survey</i> , HABS No. RI-307)	372
Figure 5.27: Kingscote dining room moveable screen from the east end (photo by Cory Dionne)	373
Figure 5.28: Kingscote dining room east end ‘corridor’ created by closing moveable screens (left) (photo by John Lupfer)	373
Figure 5.29: Kingscote 1893 estate map (detail, <i>Atlas of the City of Newport</i> , L. J. Richards and Co, Springfield, MA. From the collection of The Preservation Society of Newport County, available at newportmapproject.weebly.com)	374
Figure 5.30: Kingscote 1876 estate map (detail, <i>City Atlas of Newport</i> , G. M. Hopkins, Philadelphia, PA. From the collection of the Redwood Library and Athenaeum, available at newportmapproject.weebly.com)	374
Figure 5.31: Kingscote 1883 estate map (detail, <i>City Atlas of Newport</i> , G. M. Hopkins, Philadelphia, PA, plate 4. From the collection of the Redwood Library and Athenaeum, available at newportmapproject.weebly.com)	375

Figure 5.32: Kingscote 1921 estate map (detail, *Atlas of Newport, Jamestown, Middletown and Portsmouth*, Sanborn Map Co, New York, NY, sheet 9. From the collection of The Preservation Society of Newport County, available at newportmapproject.weebly.com)

375

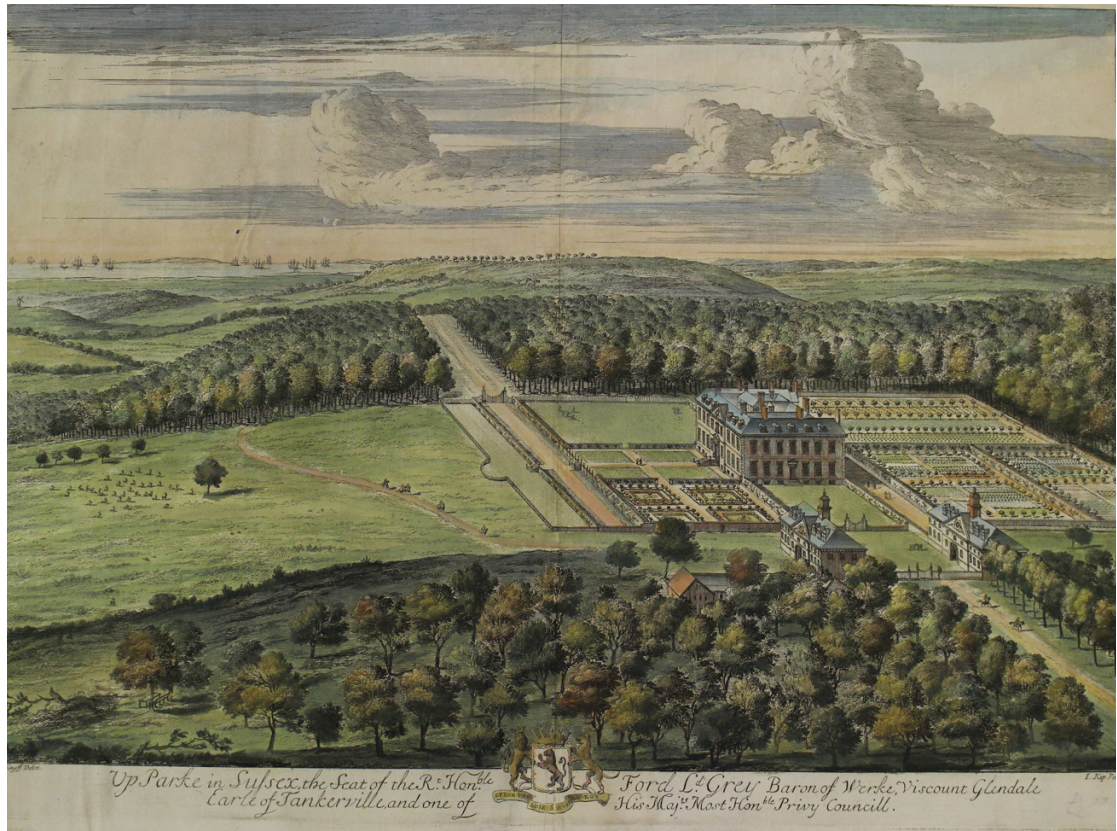


Figure 2.1: Uppark in the early-eighteenth century ('Up Parke in Sussex' by Leonard Knyff and Johannes Kip, 1707 in *Britannia Illustrata*)



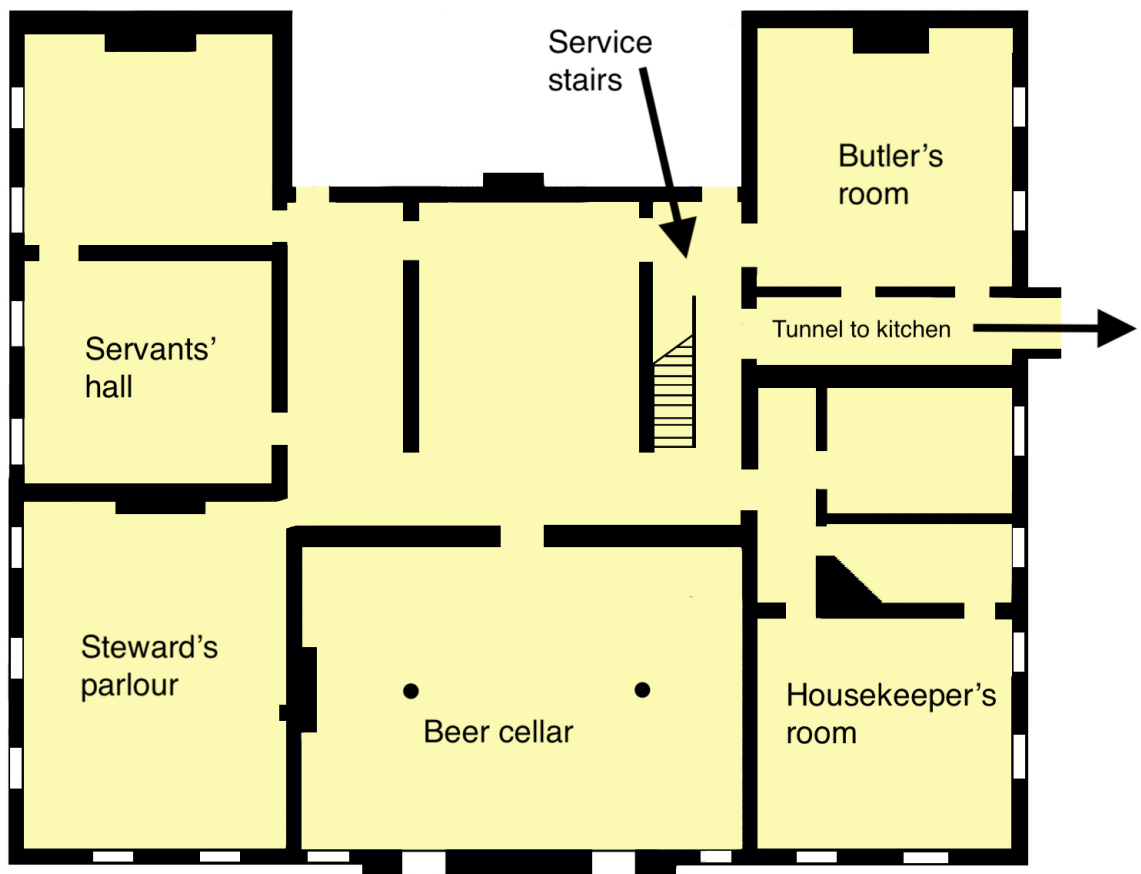
Figure 2.2: Uppark west façade (Used by permission © National Trust Images/Andrew Butler)



Figure 2.3: Uppark south façade

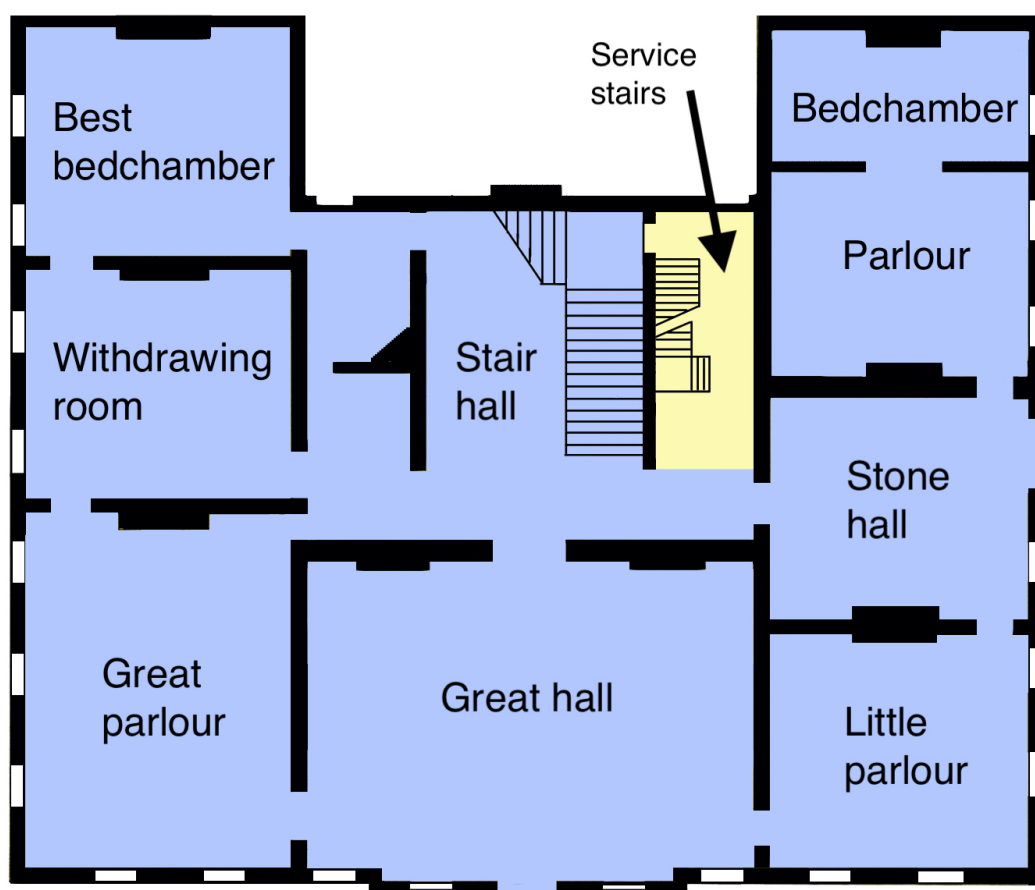


Figure 2.4: Uppark east façade (© Ian Capper, cc-by-sa/2.0)



 Servant spaces

Figure 2.5: Uppark c1730 Phase 1 basement floor plan (based on Aldsworth 2015)



 Servant spaces  Family spaces

Figure 2.6: Uppark c1730 Phase 1 ground floor plan (based on Aldsworth 2015)

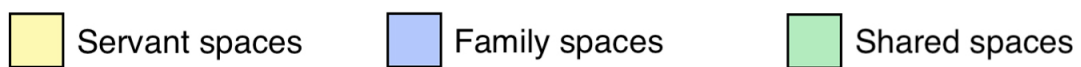
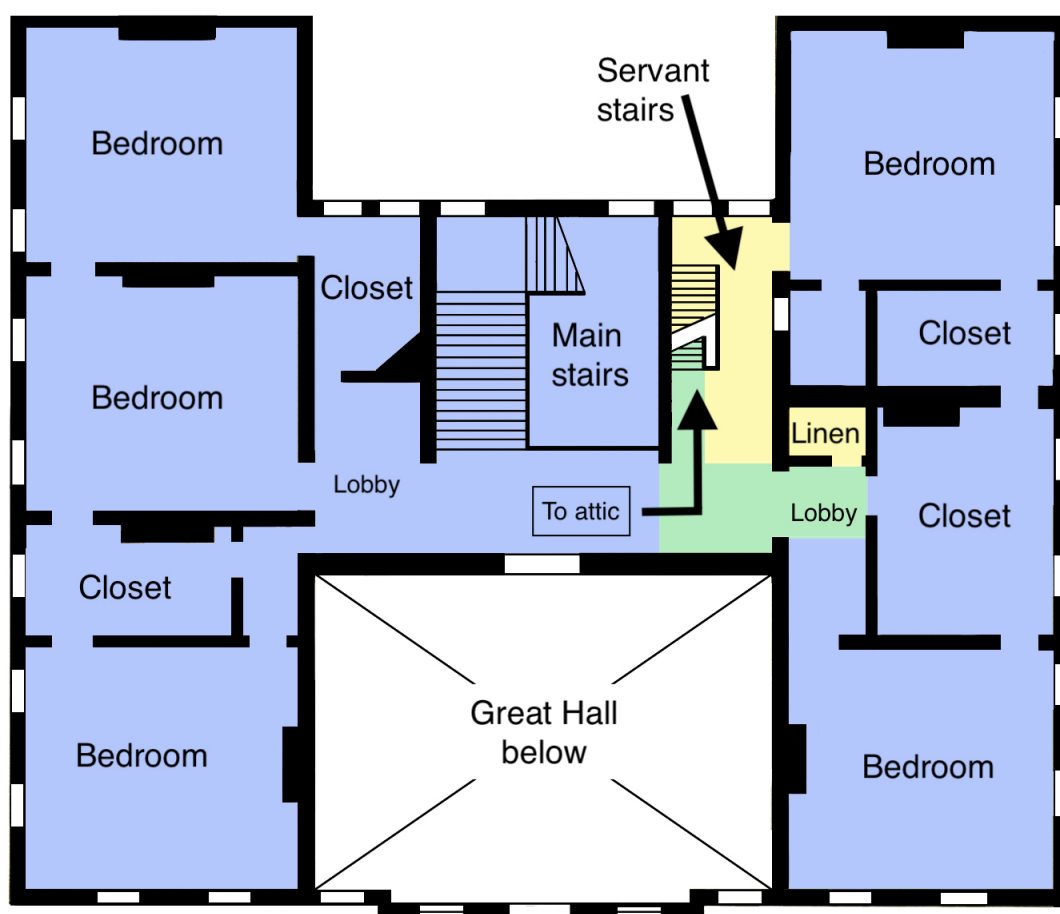
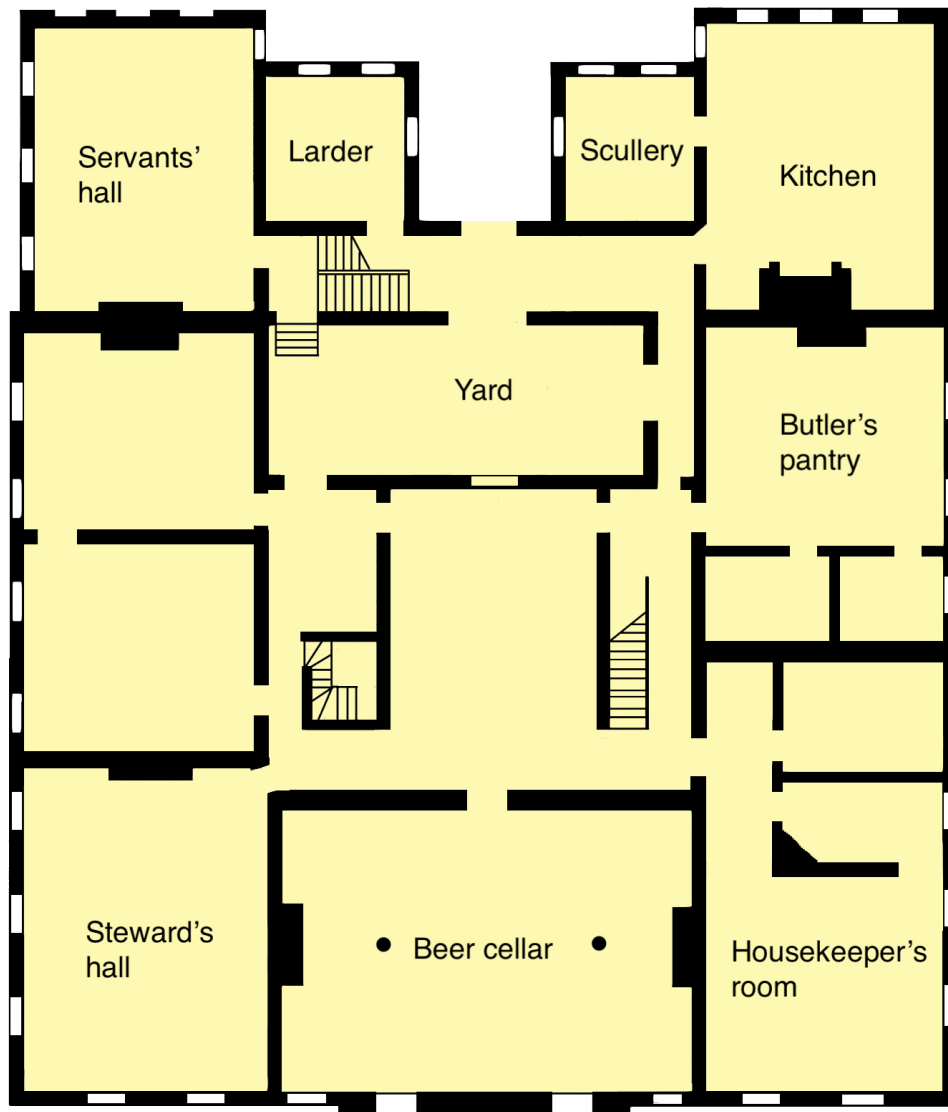
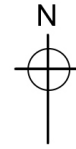


Figure 2.7: Uppark c1730 Phase 1 first floor plan (based on Aldsworth 2015)

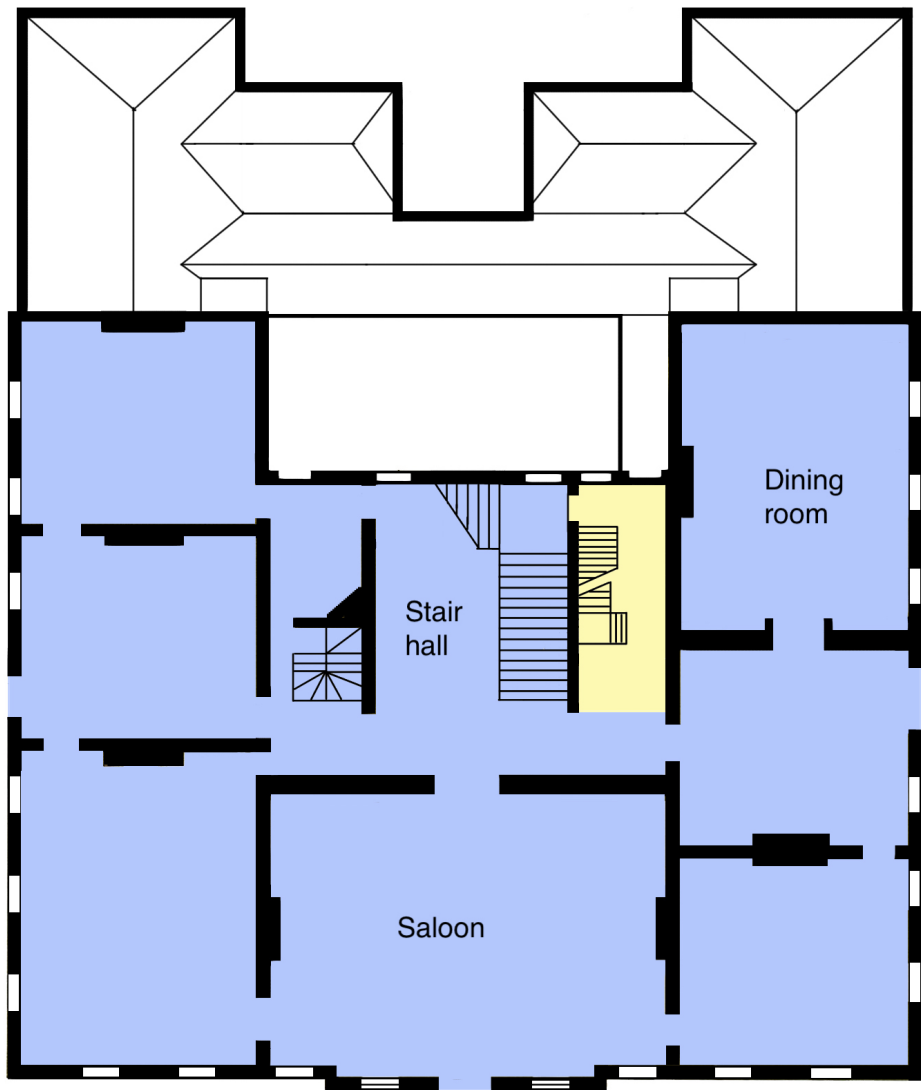


Figure 2.9: An early eighteenth-century view of Uppark by Pieter Tillemans, 1684-1734 (Used by permission © National Trust Images/John Hammond)



 Servant spaces

Figure 2.10: Uppark c1750s Phase 2 basement floor plan (based on Aldsworth 2015)





 Servant spaces  Family spaces

Figure 2.11: Uppark c1750s Phase 2 ground floor plan (based on Aldsworth 2015)

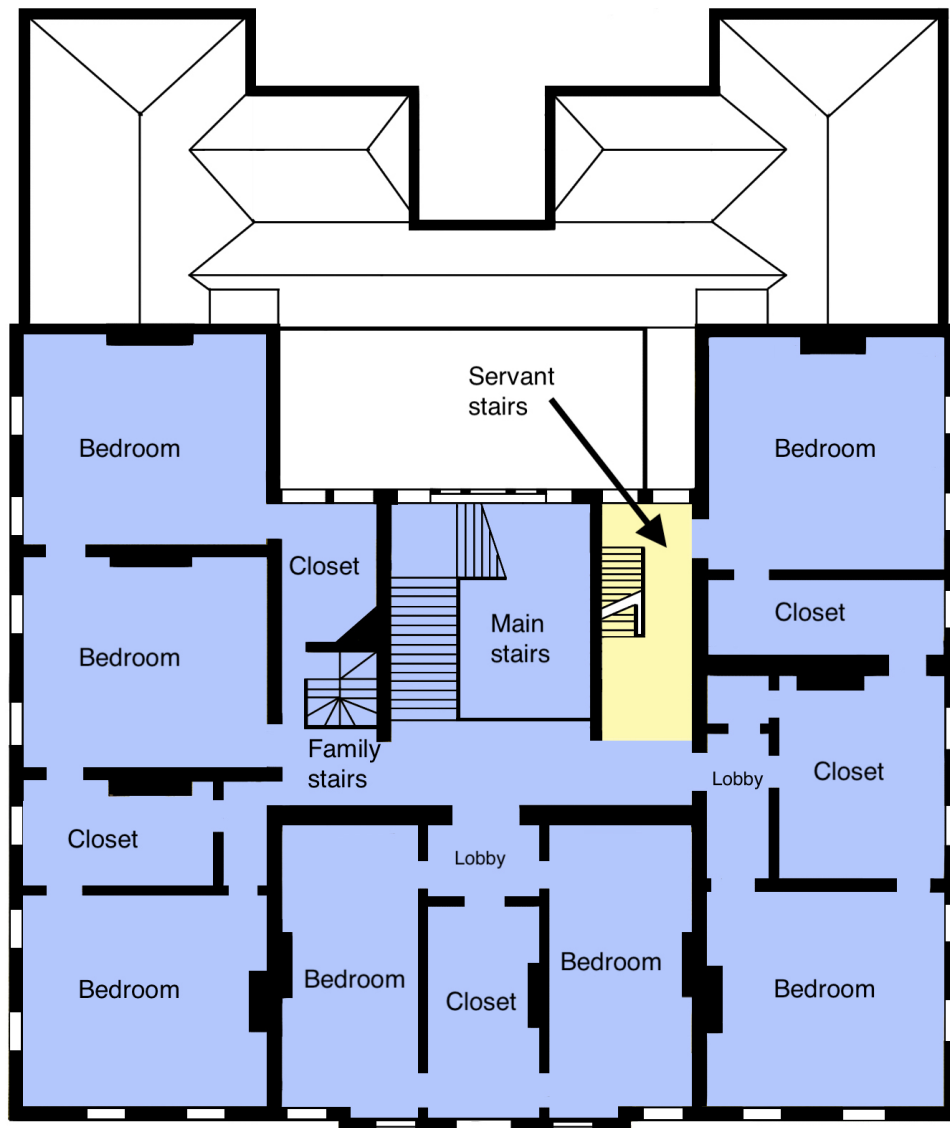


Figure 2.12: Uppark c1750s Phase 2 first floor plan (based on Aldsworth 2015)

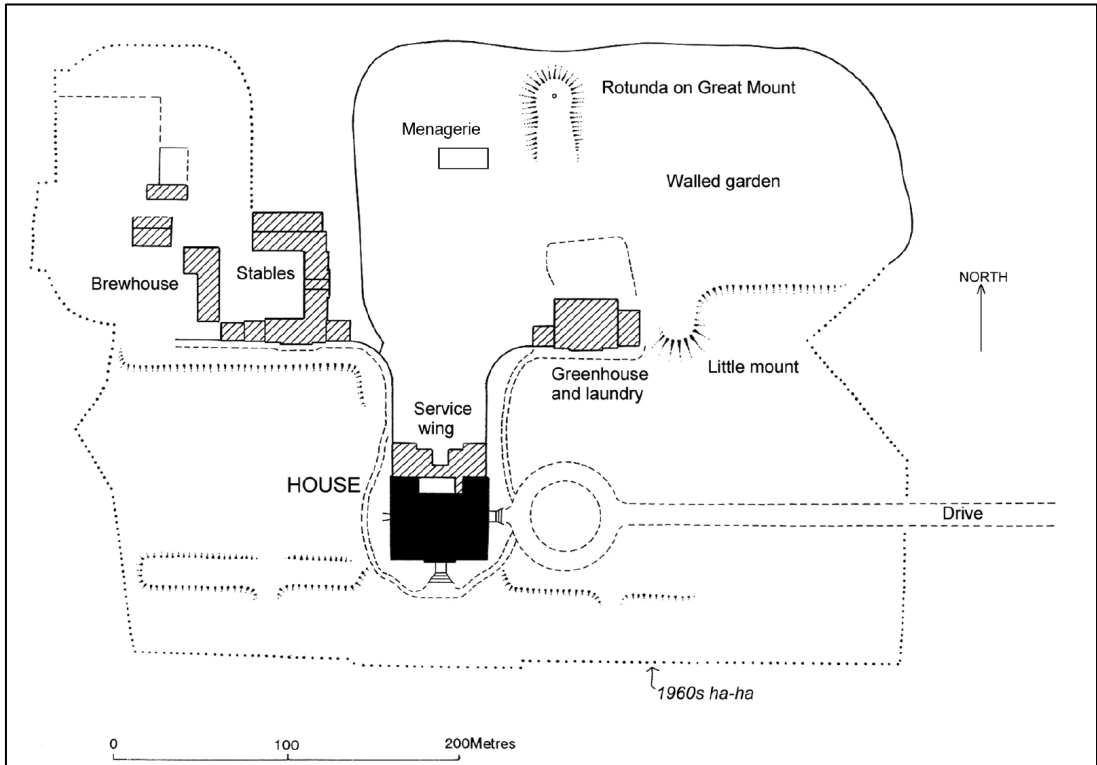


Figure 2.14: Uppark c1780 estate plan (Aldsworth 2015, 163)



Figure 2.15: Uppark kitchen building (© Paul Gillett, cc-by-sa/2.0)



Figure 2.16: Uppark north façade by Henry Repton c1810s (Used by permission © National Trust Images/Andrew Butler)



Figure 2.17: Calke Abbey east façade (© Oliver Mills, cc-by-sa/2.0)



Figure 2.18: Calke Abbey south façade (© Philip Halling, cc-by-sa/2.0)



Figure 2.19: Calke Abbey west façade (© Alan Murray-Rust, cc-by-sa/2.0)



Figure 2.20: Calke Abbey c1704 Phase 1 ground floor plan

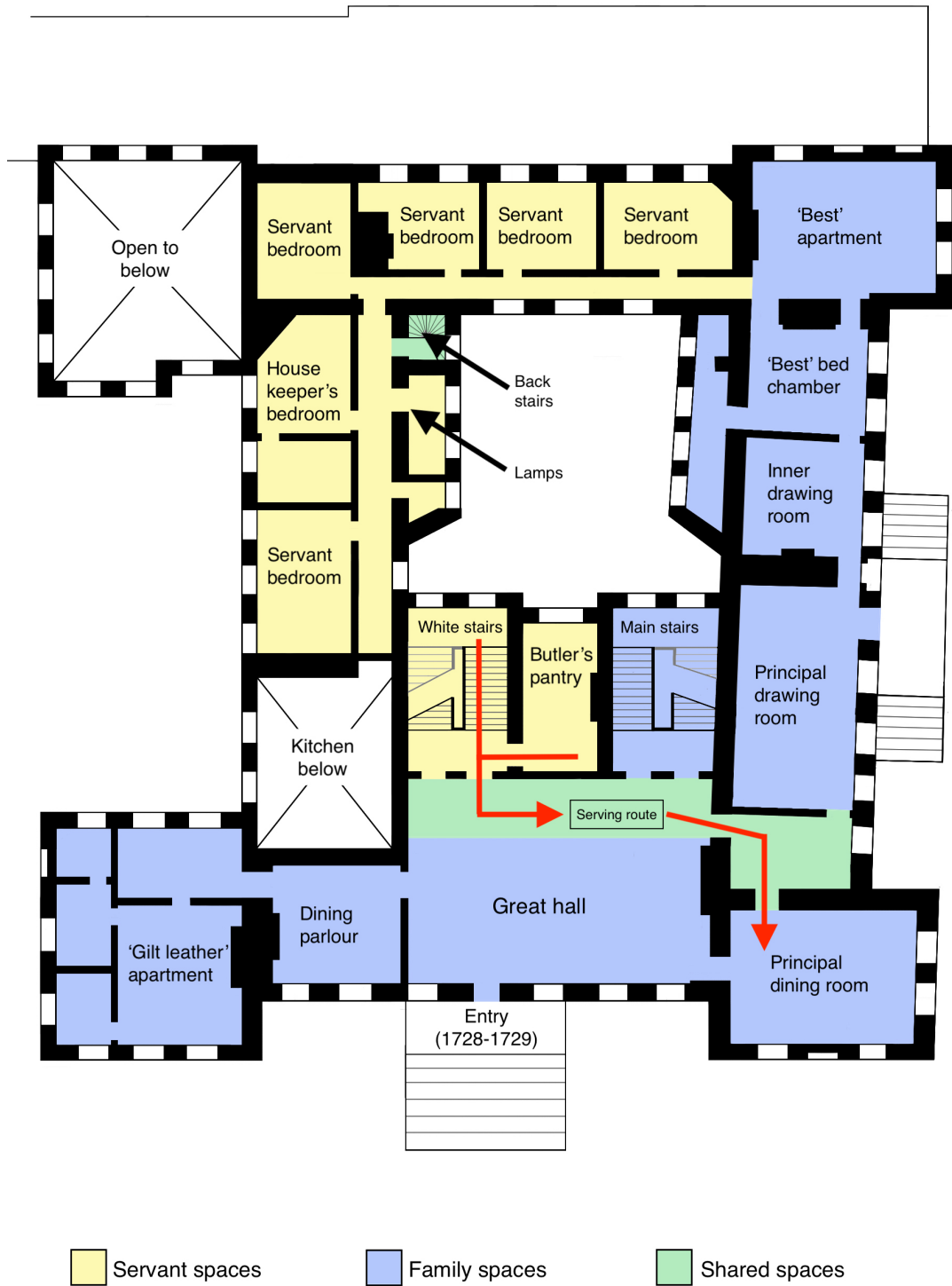
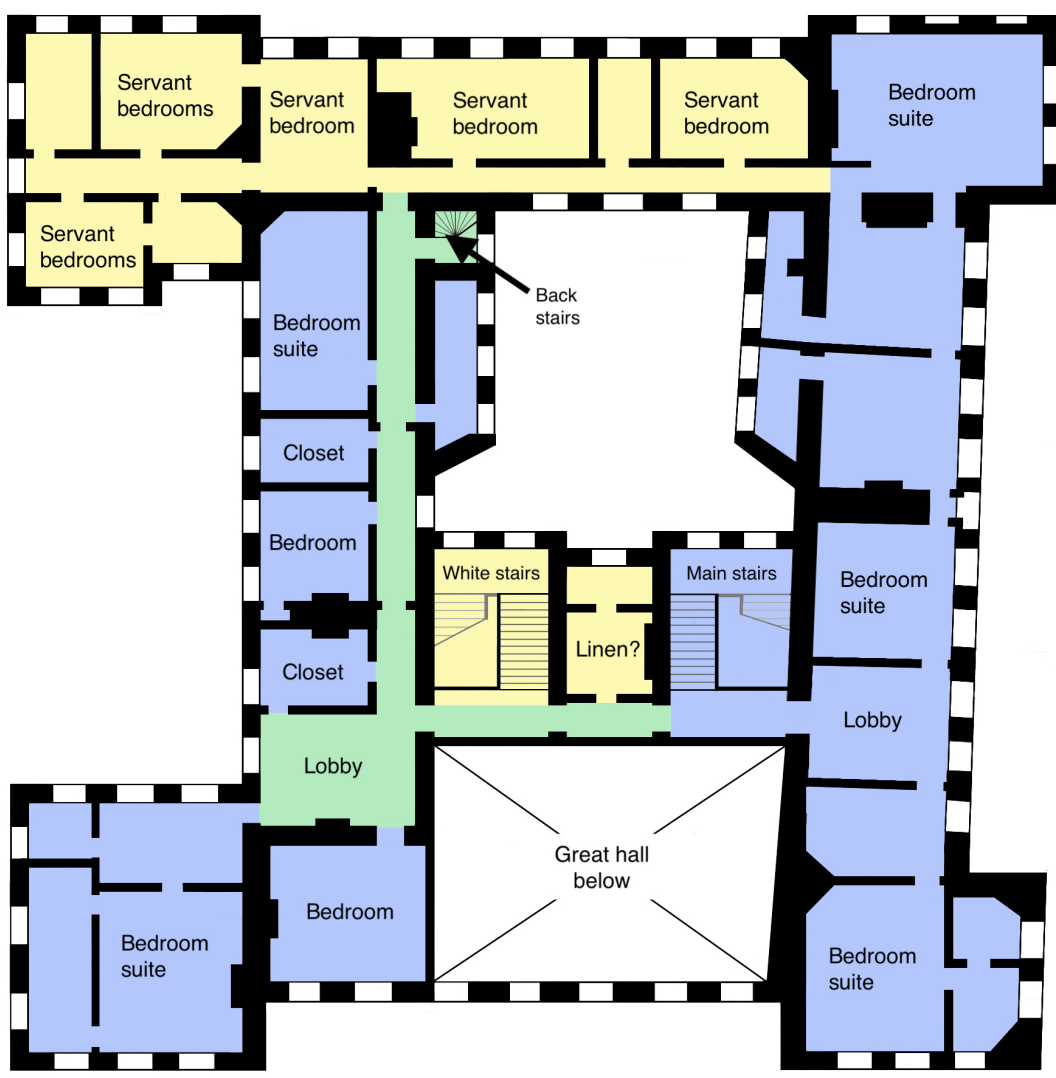


Figure 2.21: Calke Abbey c1704 Phase 1 first floor plan




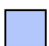

 Servant spaces  Family spaces  Shared spaces

Figure 2.22: Calke Abbey c1704 Phase 1 second floor plan

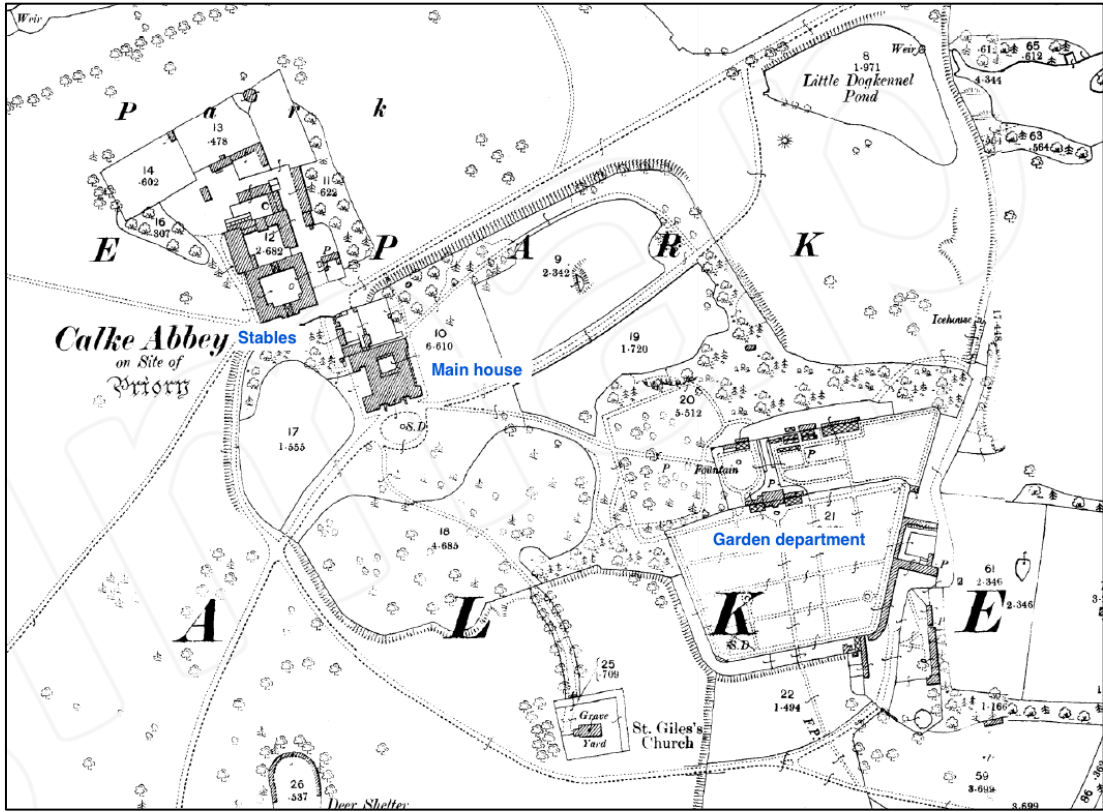


Figure 2.23: Calke Abbey estate map (© Crown Copyright and Landmark Information Group Limited (2020). All rights reserved. (1900)



Figure 2.24: Brodsworth Hall east side (© Tony Bacon, cc-by-sa/2.0)



Figure 2.25: Brodsworth Hall southwest (© JThomas, cc-by-sa/2.0)



Figure 2.26: Brodsworth Hall service wing east side (© Steve McShane, cc-by-sa/2.0)

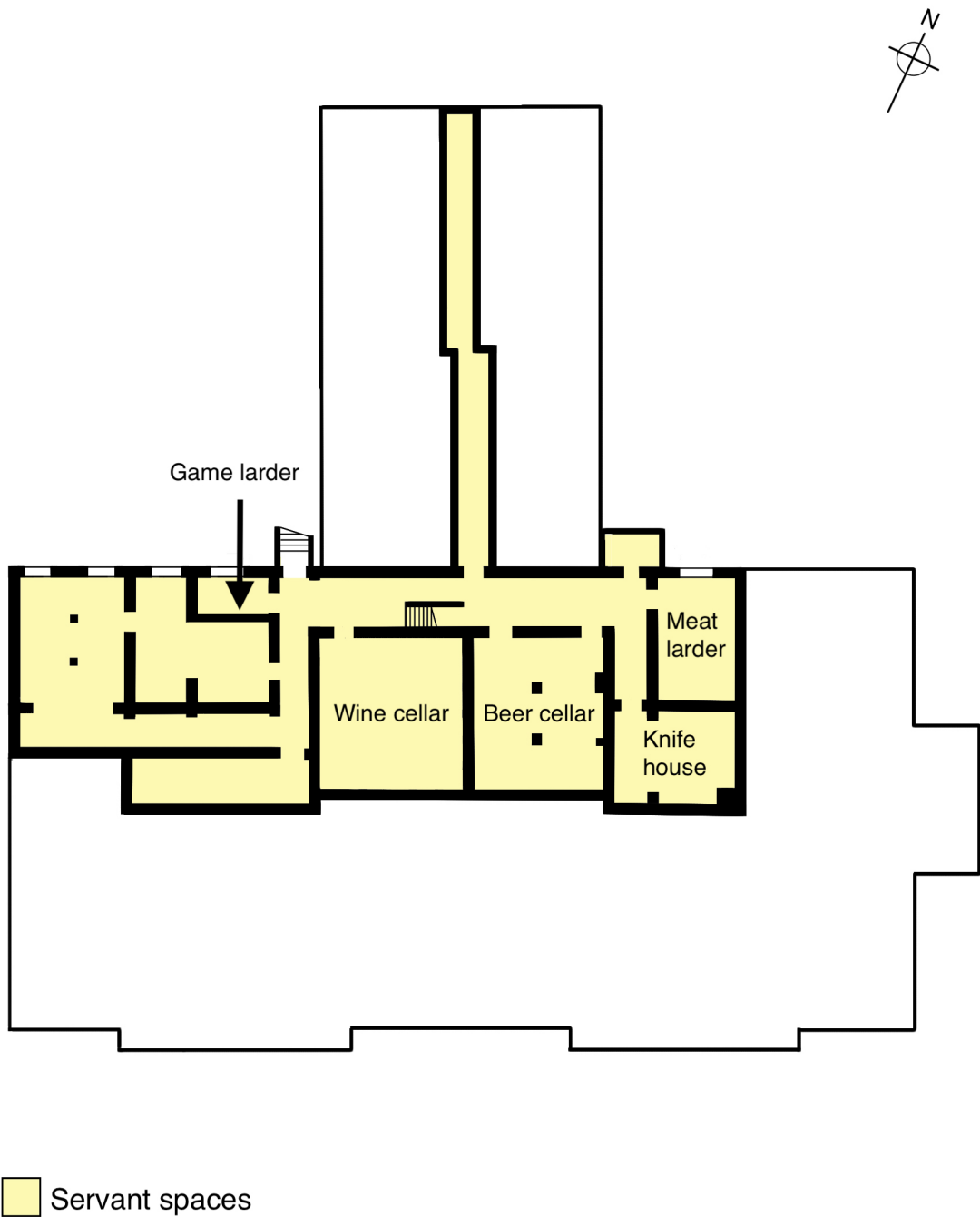


Figure 2.27: Brodsworth Hall basement floor plan (based on English Heritage)



Figure 2.28: Brodsworth Hall ground floor plan (based on English Heritage)



Figure 2.29: Brodsworth Hall first floor plan (based on English Heritage)

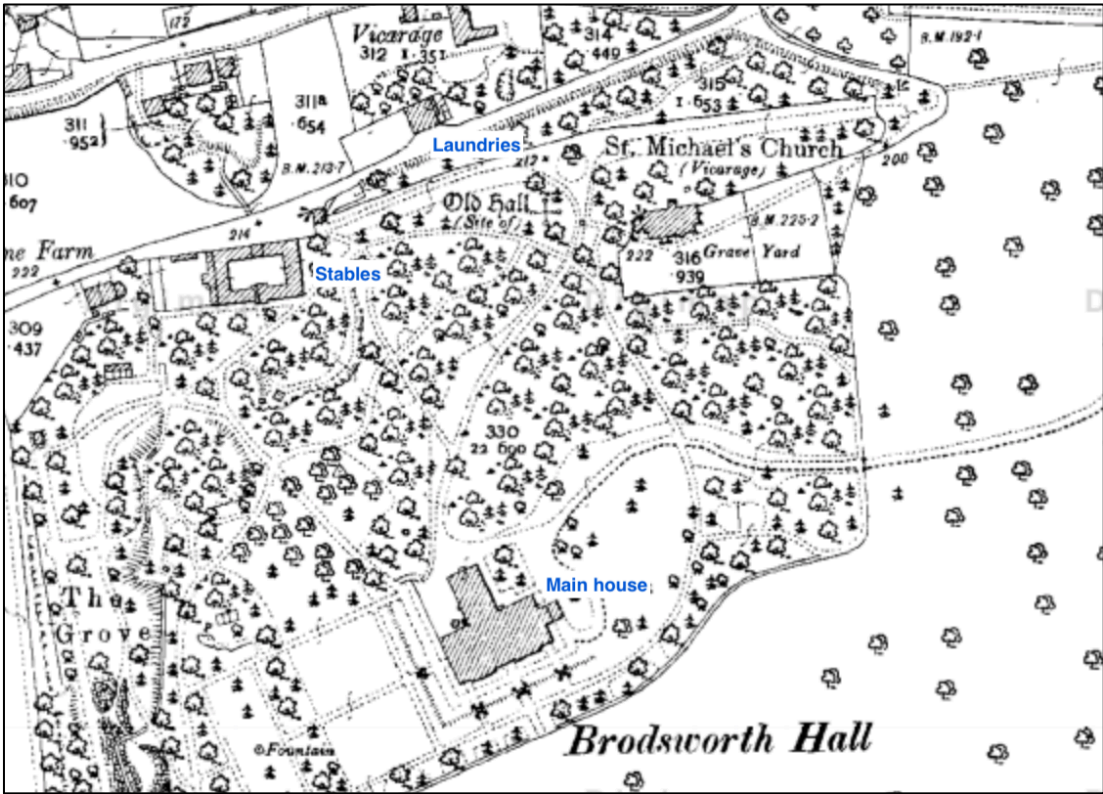


Figure 2.30: Brodsworth Hall estate map (© Crown Copyright and Landmark Information Group Limited (2020). All rights reserved. (1900)



Figure 2.31: Calke Abbey c1794 Phase 2 ground floor plan



Figure 2.32: Calke Abbey c1794 Phase 2 first floor plan

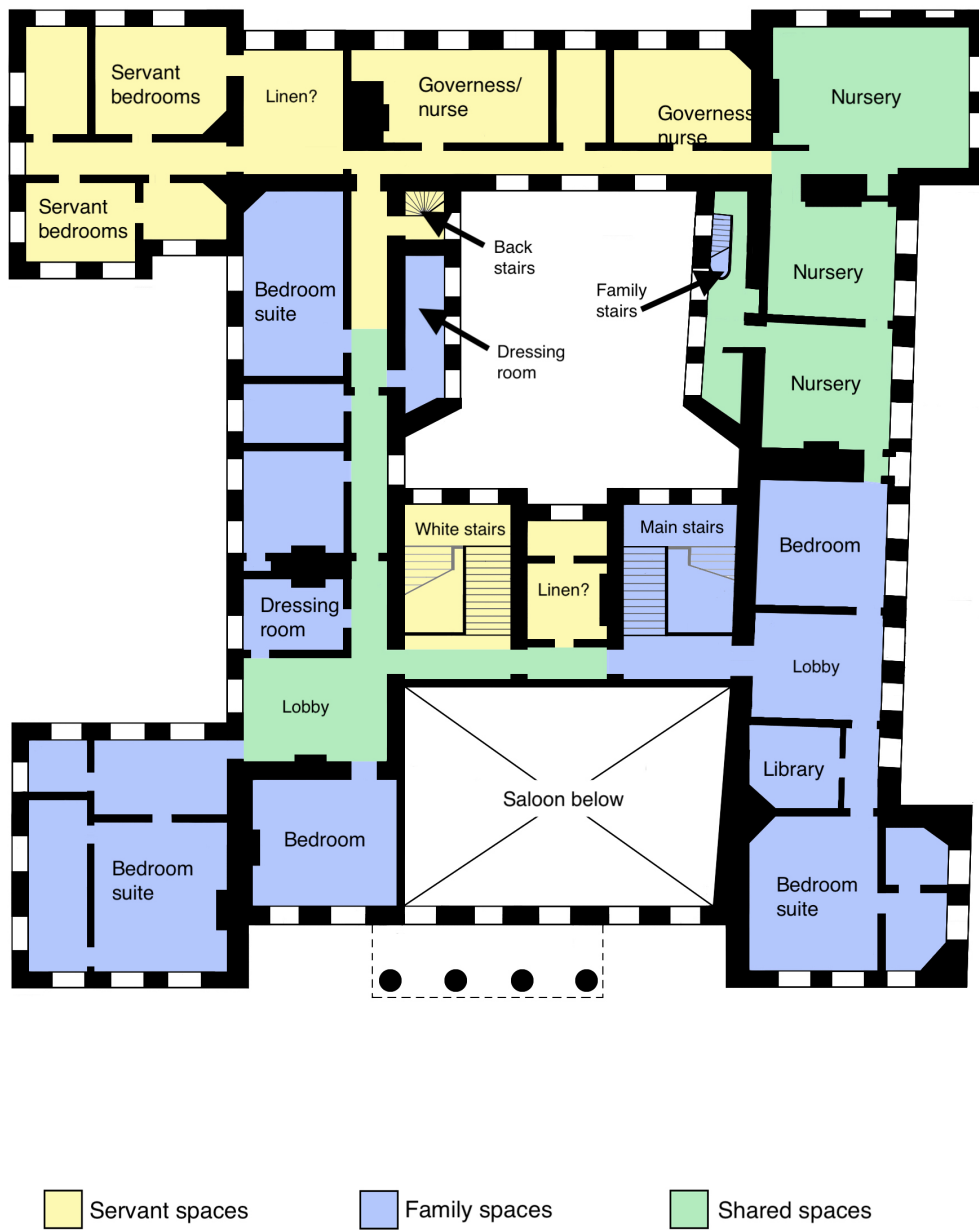


Figure 2.33: Calke Abbey c1794 Phase 2 second floor plan

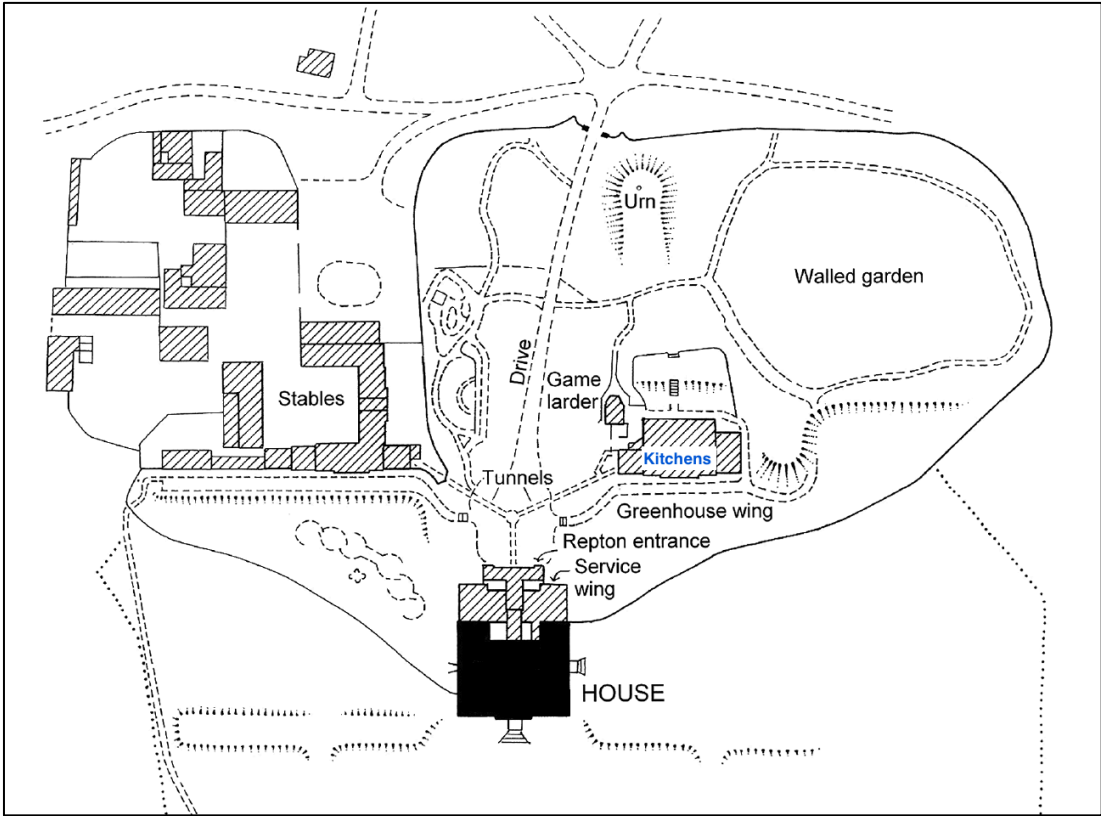


Figure 2.34: Uppark c1873 estate plan, with Phase 3 c1810s kitchen location annotated (Aldsworth 2015, 168)



Figure 2.35: Uppark c1810s Phase 3 basement floor plan (based on Aldsworth 2015)

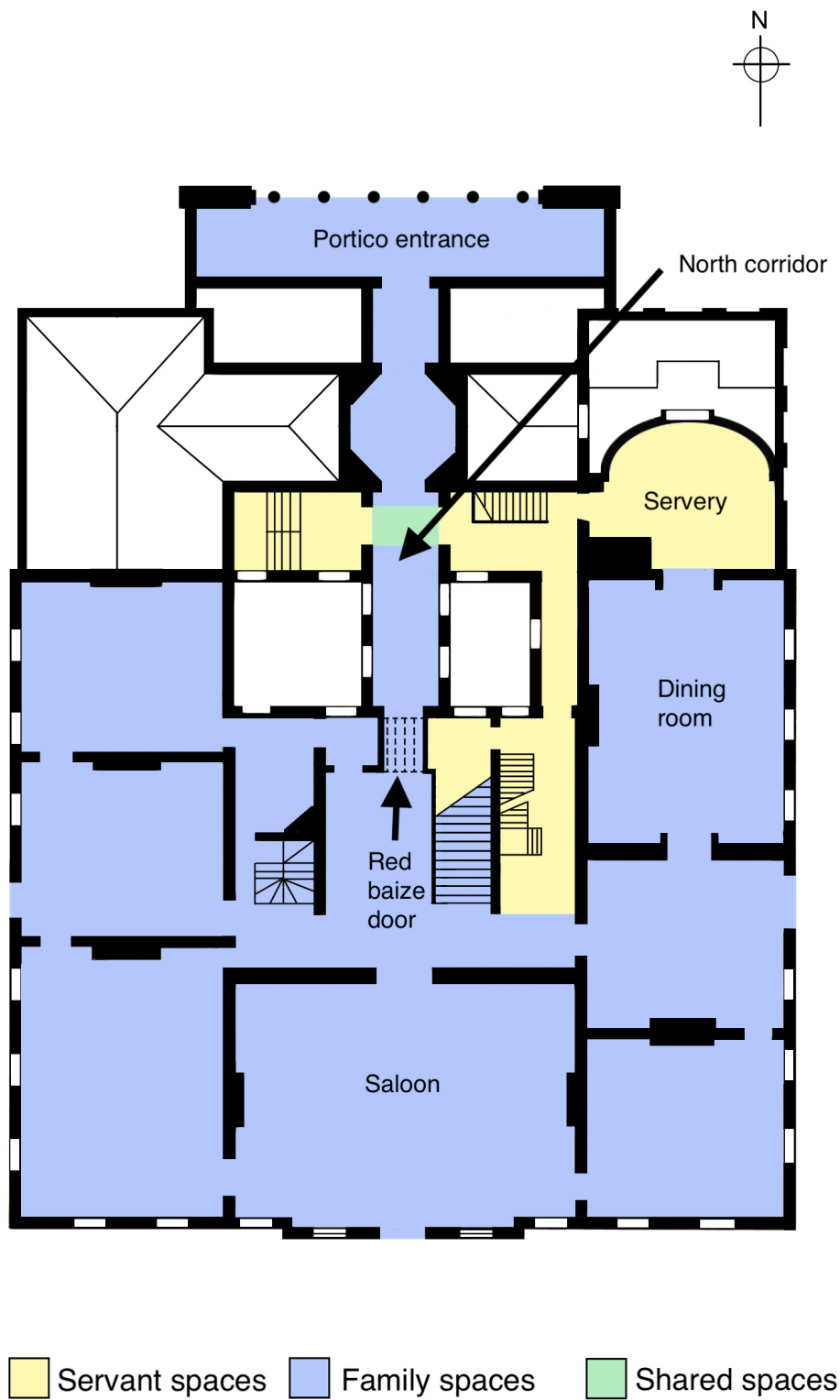


Figure 2.36: Uppark c1810s Phase 3 ground floor plan (based on Aldsworth 2015)

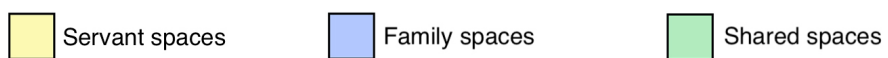
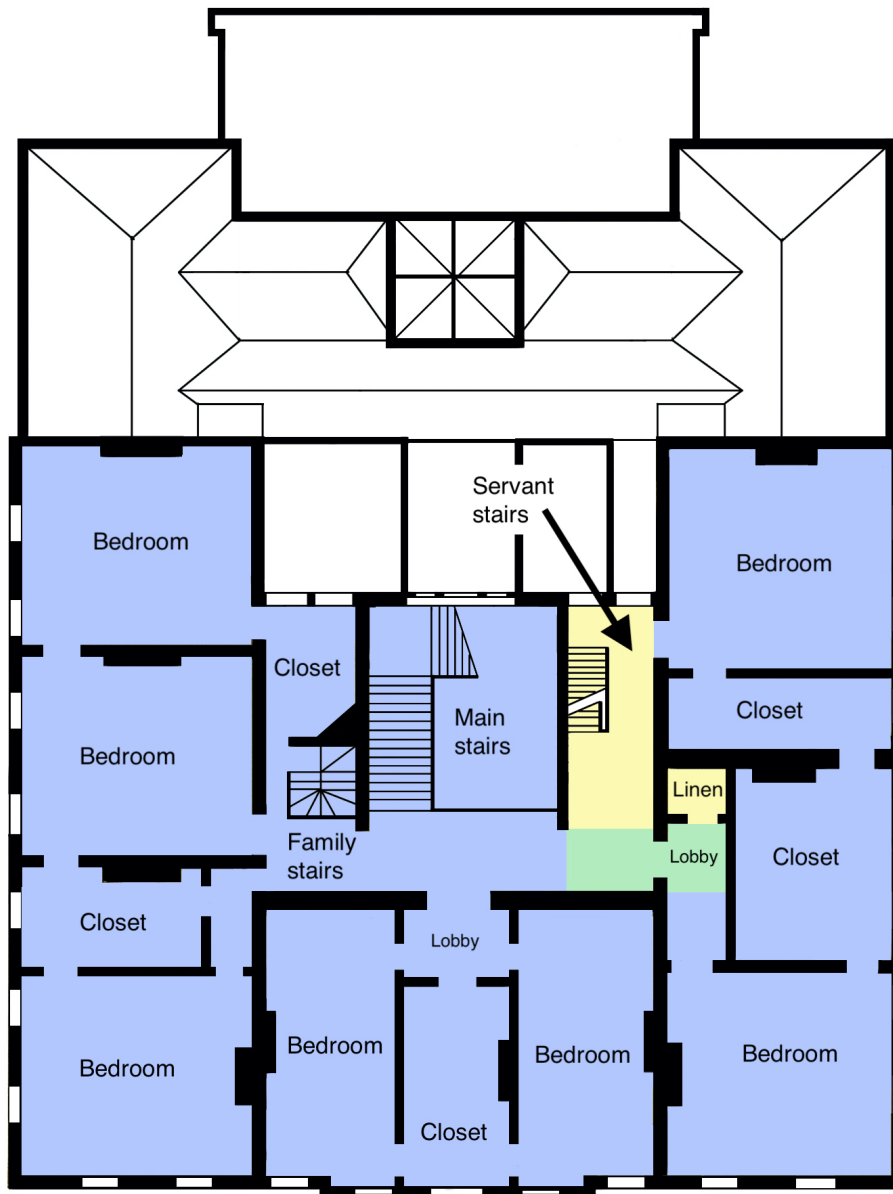


Figure 2.37: Uppark c1810s Phase 3 first floor plan (based on Aldsworth 2015)

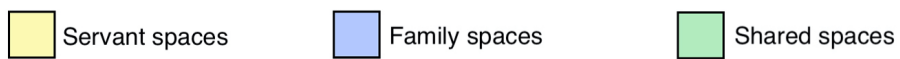
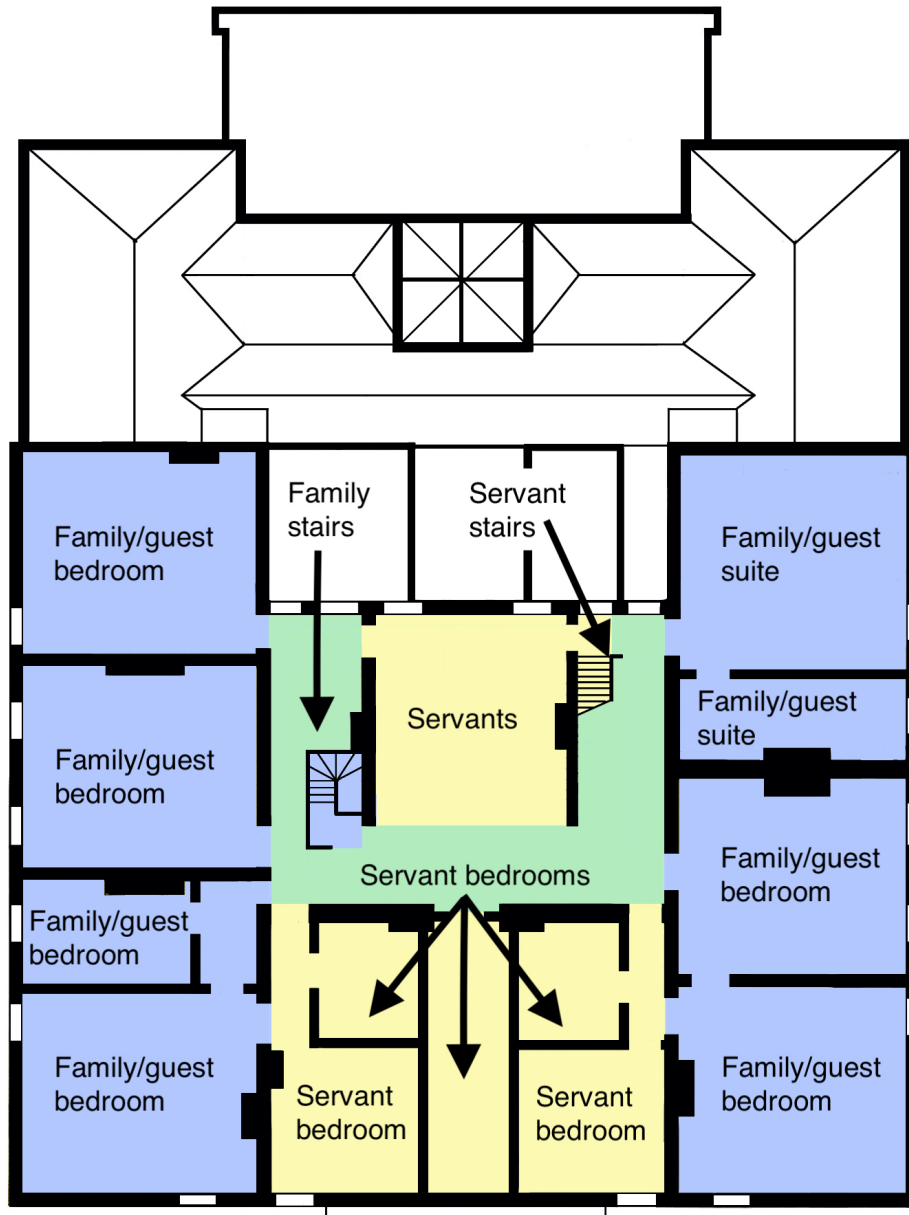


Figure 2.38: Upark c1810s Phase 3 second floor plan (based on Aldsworth 2015)



Figure 2.39: Brodsworth Hall laundry (original brewhouse) (Doncaster Metropolitan Borough Council 2010 *Application for Conversion*)



Figure 2.40: Calke Abbey c1860 Phase 3 ground floor plan



Figure 2.41: Calke Abbey c1860 Phase 3 first floor plan



Figure 2.42: Calke Abbey c1860 Phase 3 second floor plan

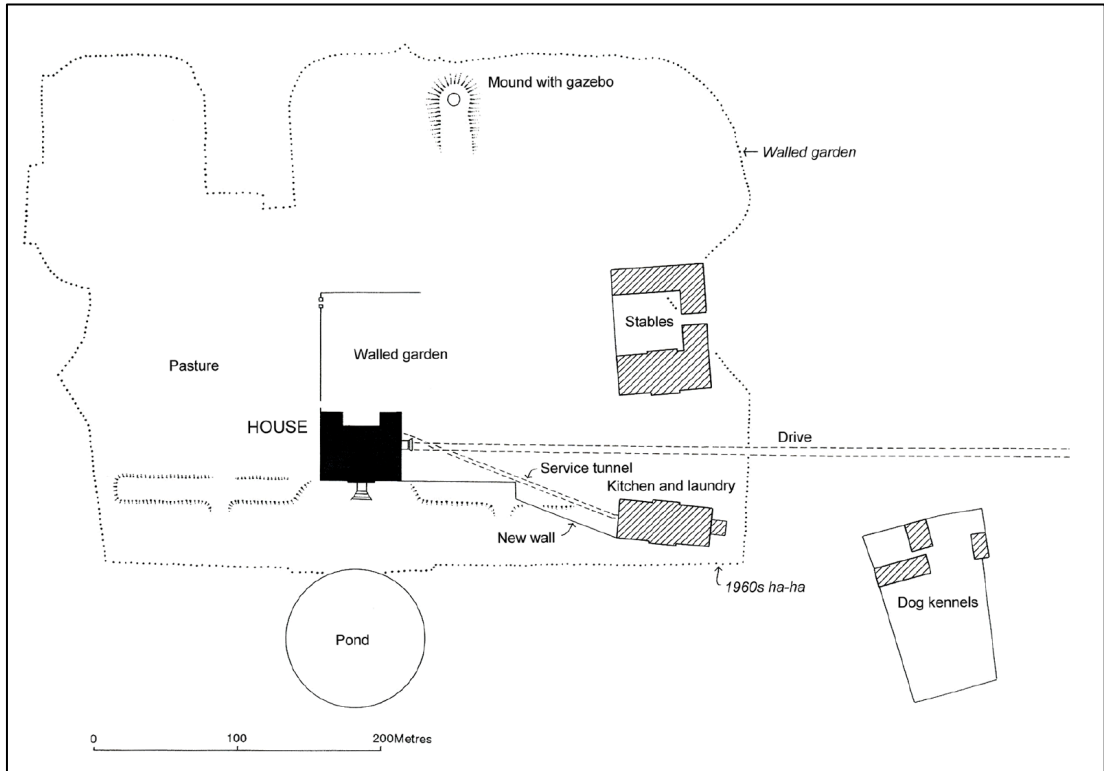


Figure 2.43: Uppark c1730 estate plan with tunnel to original kitchen (Aldsworth 2015, 148)



Figure 2.44: Uppark red baize door in stair hall (Used by permission © National Trust Images/Andreas von Einsiedel)



Figure 2.45: Calke Abbey stables (© Phil Myott, cc-by-sa/2.0)



Figure 2.46: Calke Abbey orangery greenhouse (Used by permission © National Trust Images/Jemma Finch)



Figure 3.1: Kiplin Hall from the east



Figure 3.2: Kiplin Hall estate map 2019 (© Crown Copyright and Landmark Information Group Limited (2020). All rights reserved. (2019)



Figure 3.3: Kiplin Hall east façade (© Madmedea, cc-by-sa/2.5)



Figure 3.4: Kiplin Hall southeastern view (© DS Pugh, cc-by-sa/2.0)



Figure 3.5: Kiplin Hall west façade (© Bill Harrison, cc-by-sa/2.0)



Figure 3.6: Kiplin Hall north façade and reconstructed tower



Figure 3.7: Kiplin Hall kitchens east façade



Figure 3.8: Kiplin Hall kitchens view from southwest



Figure 3.9: Kiplin Hall service link with clock tower



Figure 3.10: Kiplin survey map c1723 (detail) (Used by permission NYCRO ZBL M/1)

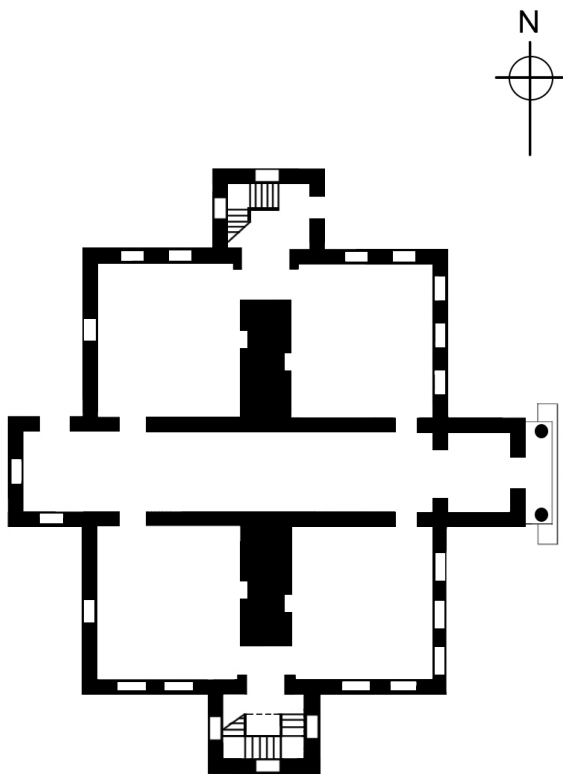


Figure 3.11: Kiplin Hall conjectural plan c1625



Figure 3.12: Portrait of Cecil Calvert (National Trust Library Historic Postcard Collection, Special Collections, University of Maryland Libraries)

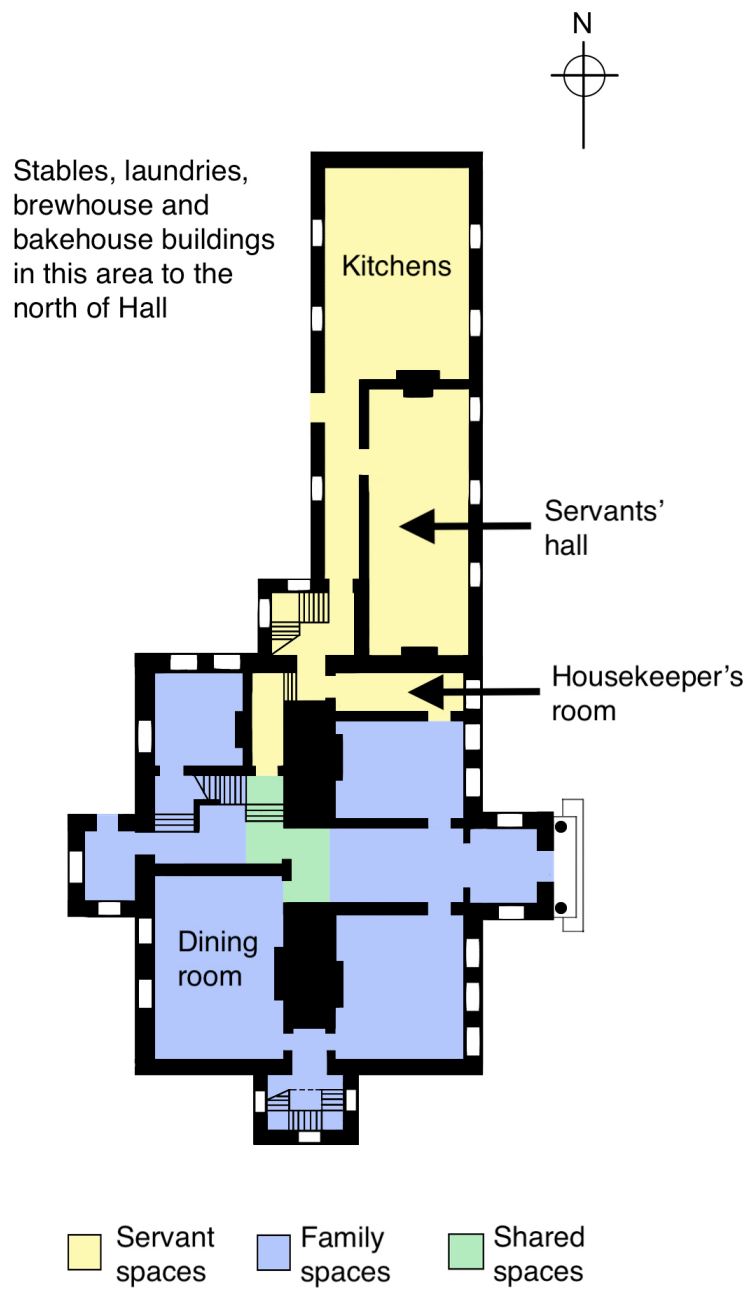


Figure 3.13: Kiplin Hall c1740 Phase 1 ground floor plan

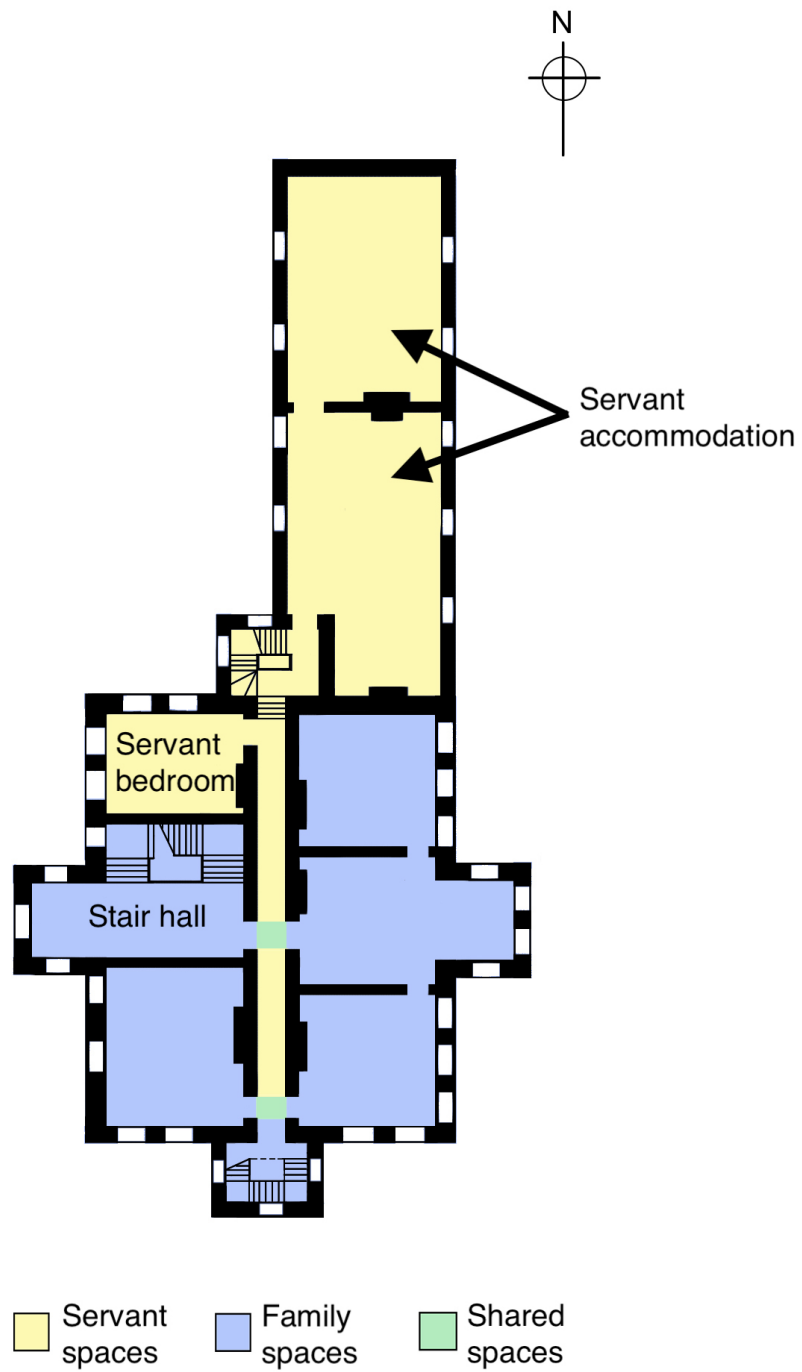


Figure 3.14: Kiplin Hall c1740 Phase 1 first floor plan

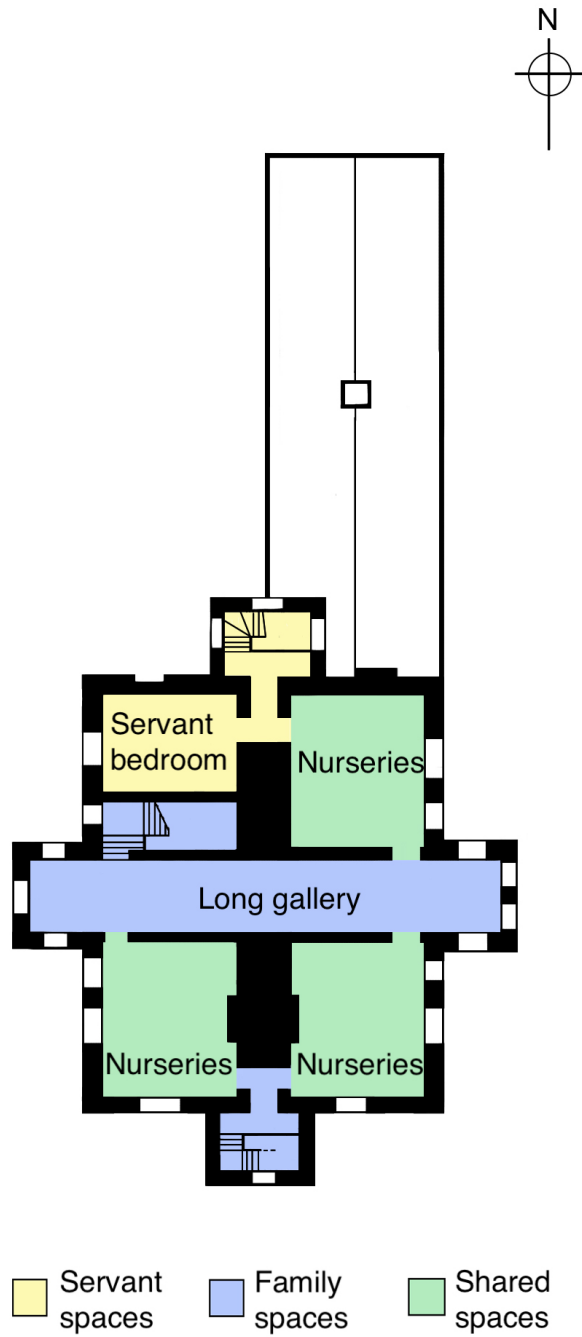


Figure 3.15: Kiplin Hall c1740 Phase 1 second floor plan

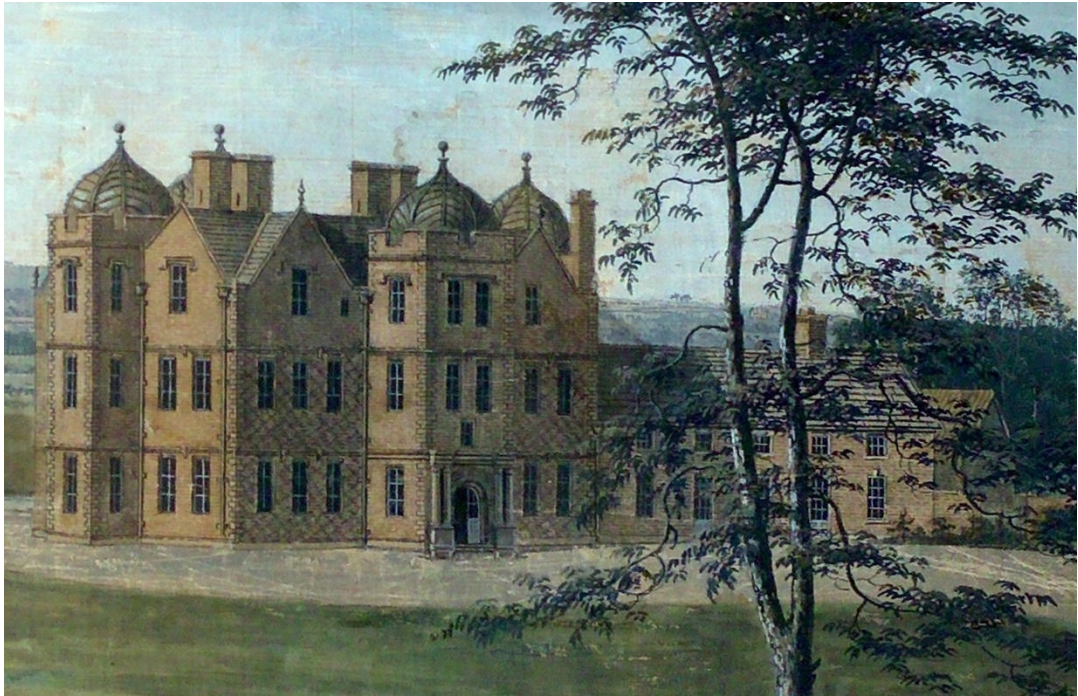


Figure 3.16: Kiplin Hall c1780 by George Cuit the Elder (detail) (Kiplin Hall Trust)



Figure 3.17: Kiplin Hall first floor 'servants' corridor

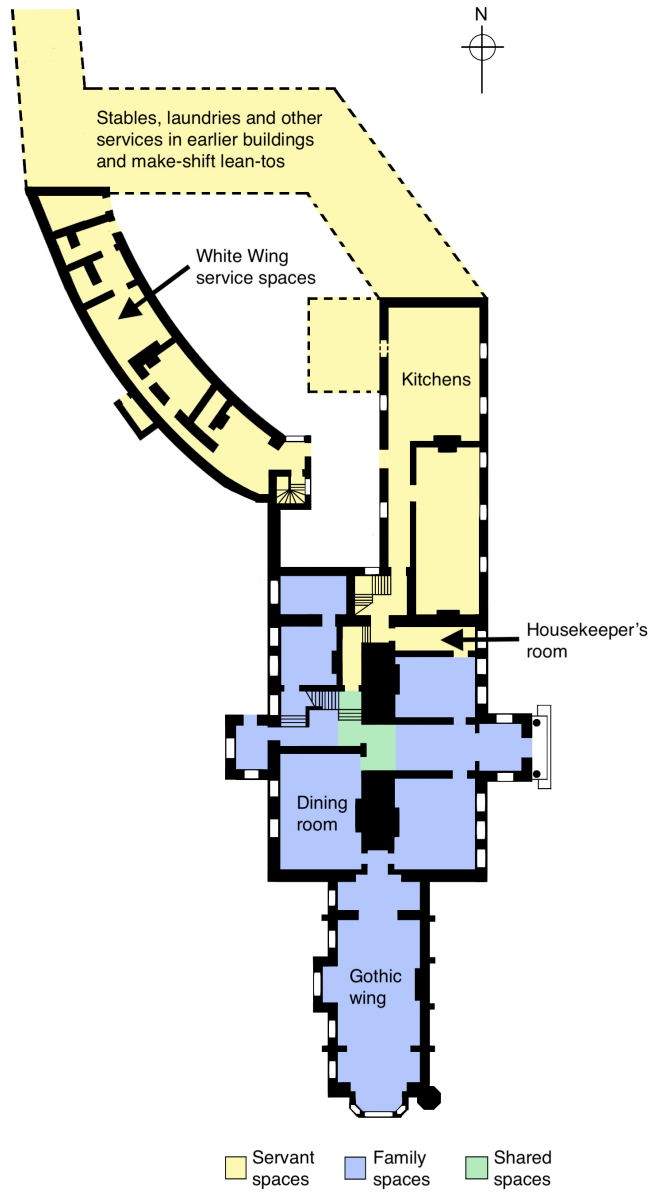


Figure 3.18: Kiplin Hall c1820 Phase 2 ground floor plan

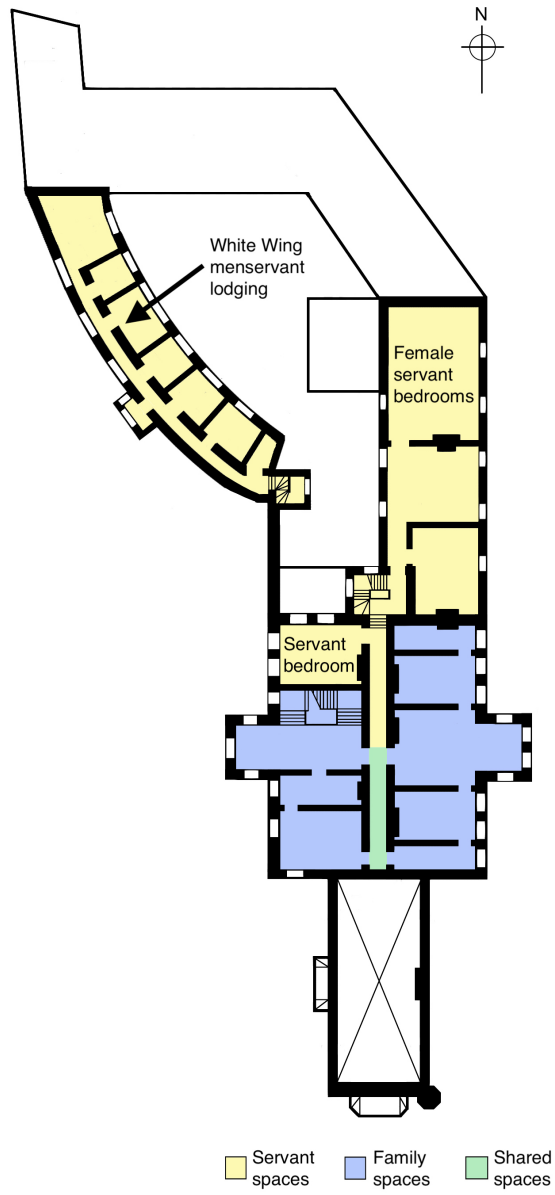


Figure 3.19: Kiplin Hall c1820 Phase 2 first floor plan

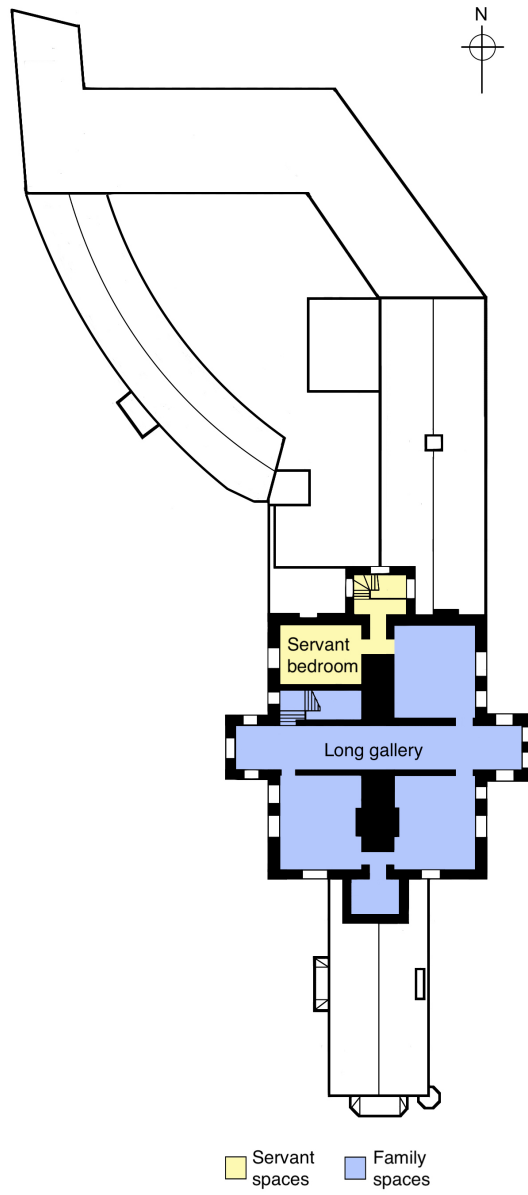


Figure 3.20: Kiplin Hall c1820 Phase 2 second floor plan

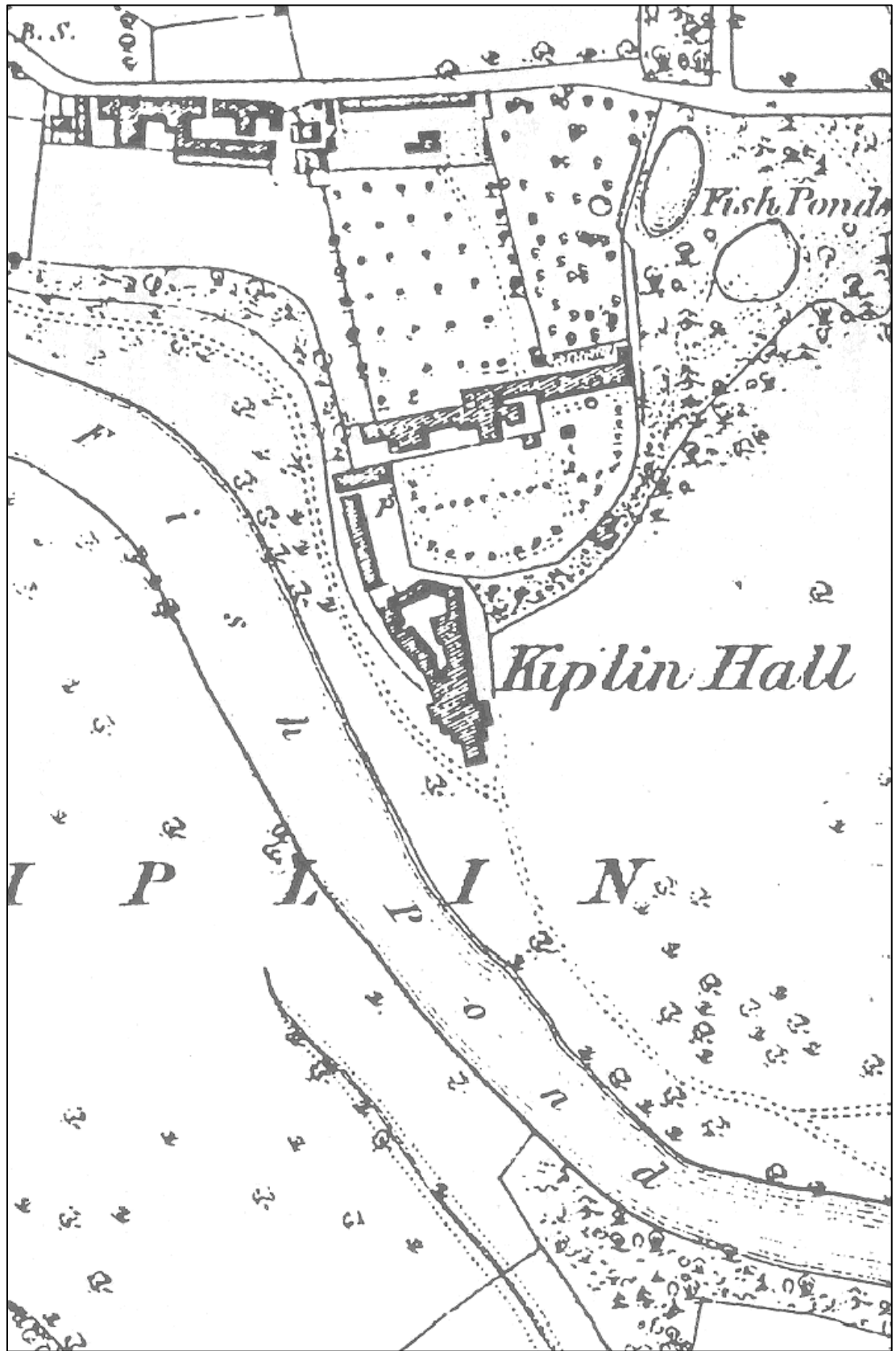


Figure 3.21: Kiplin Hall estate map 1857 (© Crown Copyright and Landmark Information Group Limited (2020). All rights reserved. (1857)



Figure 3.22: Kiplin Hall from the southeast c1867 (Kiplin Hall Trust)

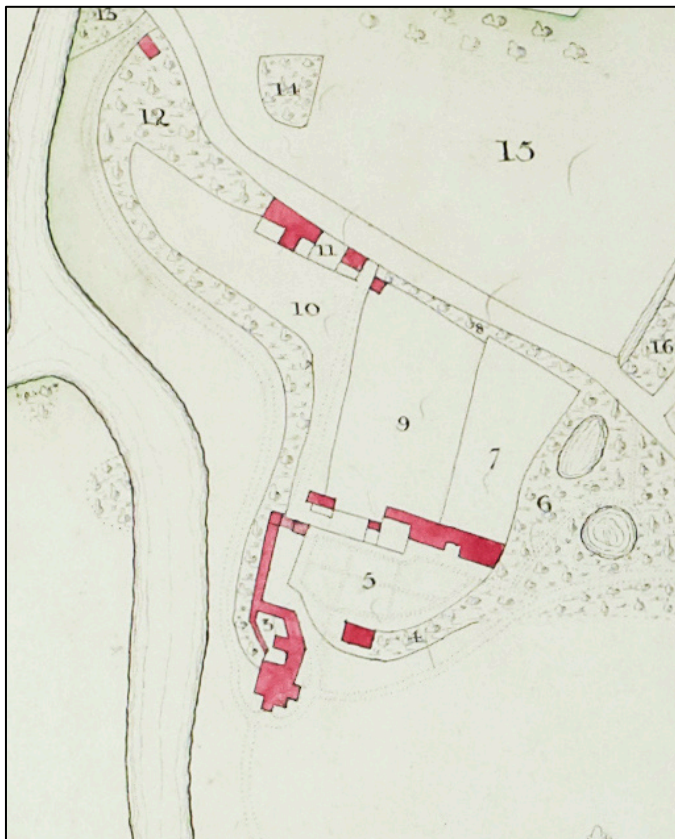


Figure 3.23: Kiplin title map (Used by permission
NYCRO T [MIC 1795/185-190])



Figure 3.24: Kiplin Hall c1890 Phase 3 ground floor plan



Figure 3.25: Kiplin Hall c1890 Phase 3 first floor plan

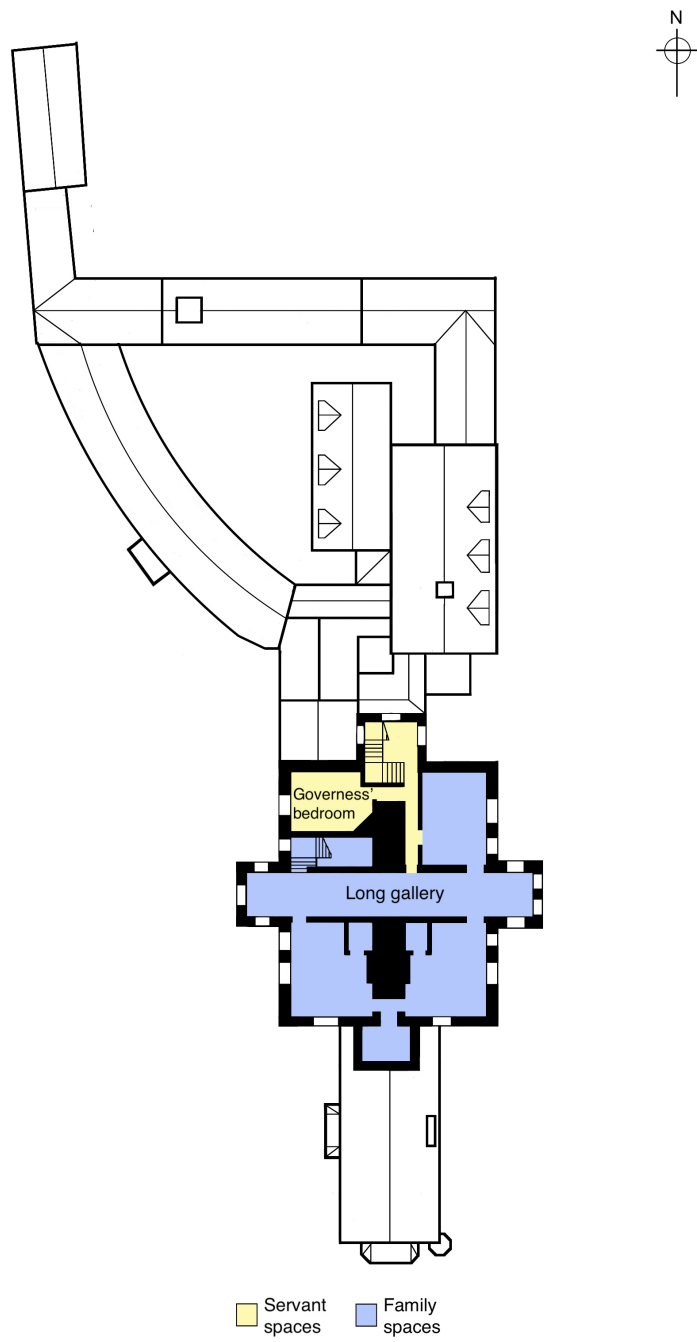


Figure 3.26: Kiplin Hall c1890 Phase 3 second floor plan



Figure 3.27: Kiplin Hall north tower c1867 (Kiplin Hall Trust)



Figure 3.28: Kiplin Hall 'housekeepers link' in 1976 (Kiplin Hall Trust)



Figure 3.29: Kiplin Hall north tower staircase demolition 1976 (Kiplin Hall Trust)

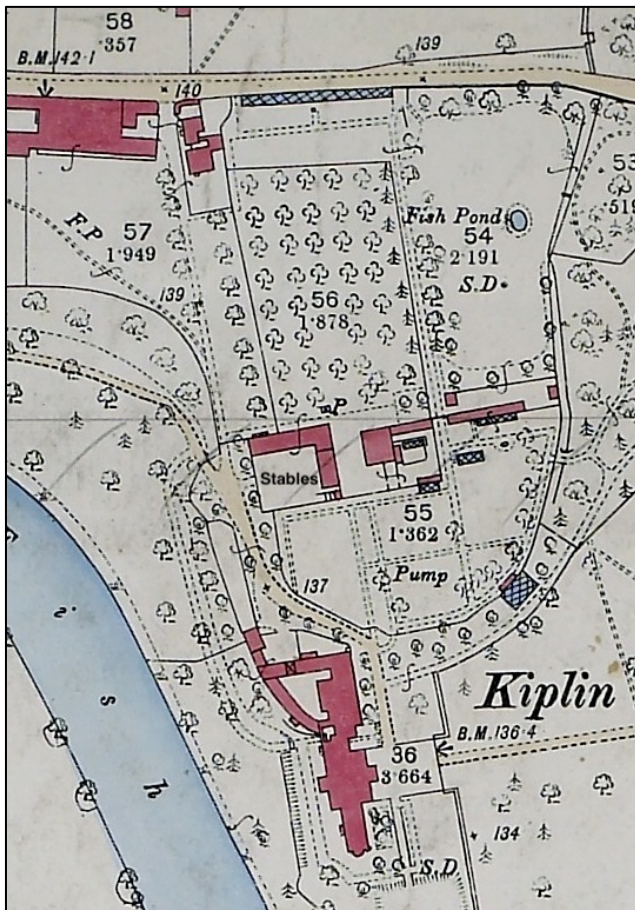


Figure 3.30: Kiplin Hall estate map 1893 (© Crown Copyright and Landmark Information Group Limited (2020). All rights reserved. (1893)



Figure 3.31: Kiplin Hall stables (© Bill Harrison, cc-by-sa/2.0)



Figure 4.1: Mount Vernon entrance and Circle Drive (Carol M. Highsmith / Public domain)



Figure 4.2: Mount Vernon Mansion north façade, Palladian window



Figure 4.3: Mount Vernon Mansion from southeast
(Carol M. Highsmith / Public domain)



Figure 4.4: Mount Vernon modern estate map (Mount Vernon Ladies' Association)



Figure 4.5: Mount Vernon servants' hall (right) and gardener's house (left)



Figure 4.6: Mount Vernon kitchen (left) and storehouse (right)



Figure 4.7: Mount Vernon north colonnade



Figure 4.8: Mount Vernon gardener's house east side with half-hipped and half-gable roof



Figure 4.9: Mount Vernon salt house



Figure 4.10: Mount Vernon smokehouse



Figure 4.11: Mount Vernon spinning house



Figure 4.12: Mount Vernon washhouse



Figure 4.13: Mount Vernon stable



Figure 4.14 Mount Vernon greenhouse and enslaved peoples' quarters (© Martin Falbisoner, cc-by-sa/3.0)

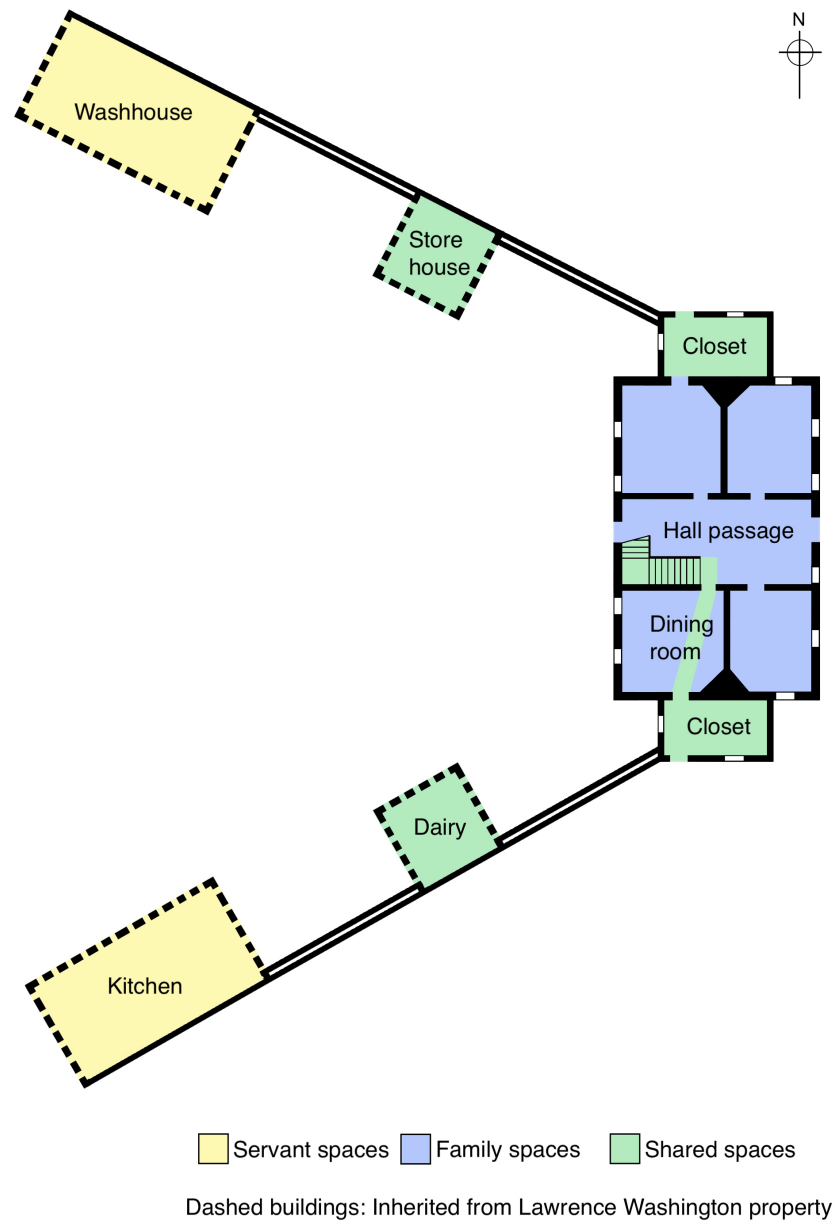


Figure 4.15: Mount Vernon c1759 Phase 1 ground floor plan

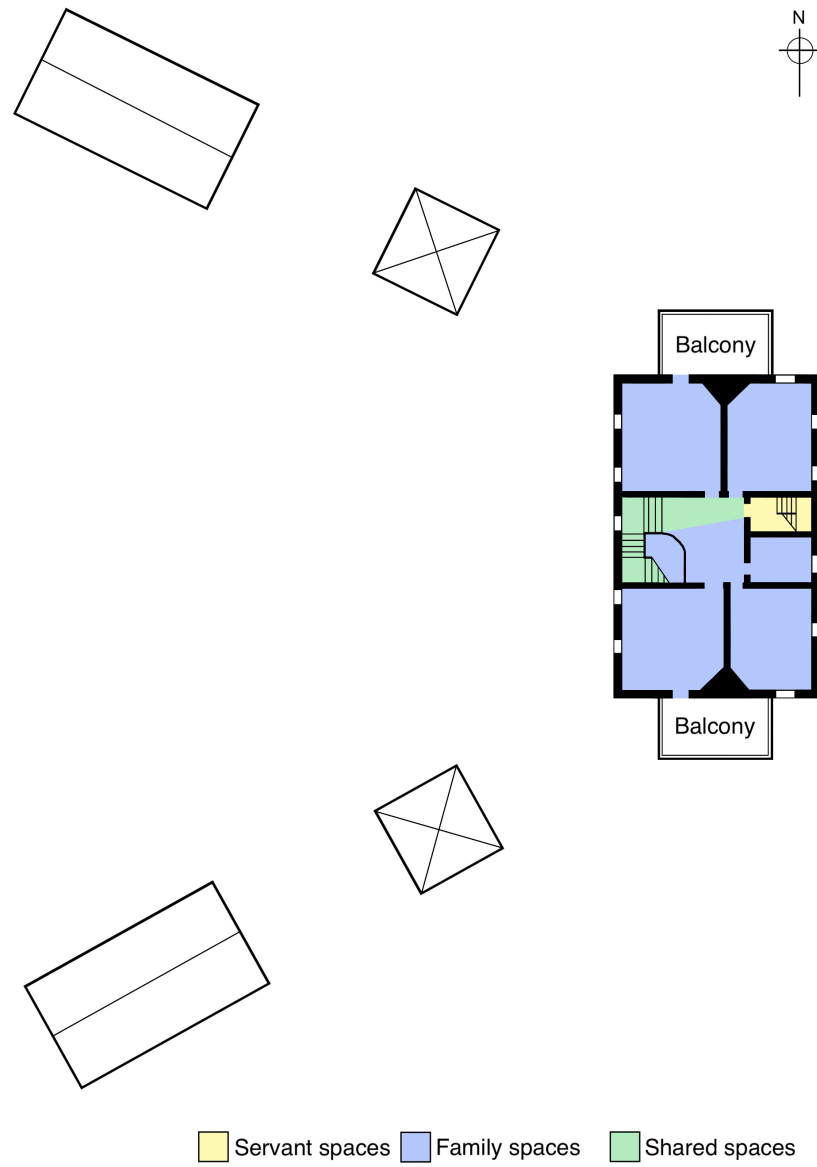


Figure 4.16: Mount Vernon c1759 Phase 1 first floor plan

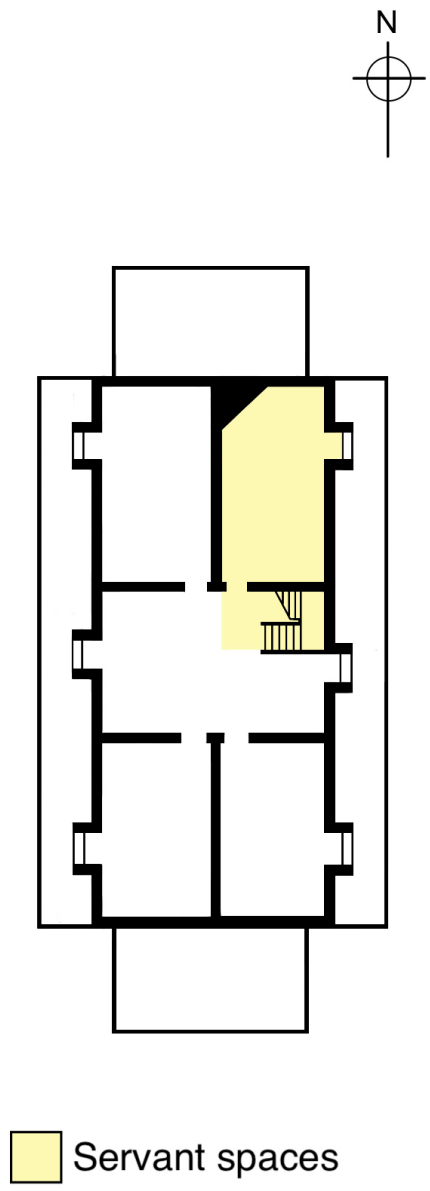


Figure 4.17: Mount Vernon c1759 Phase 1 second floor plan

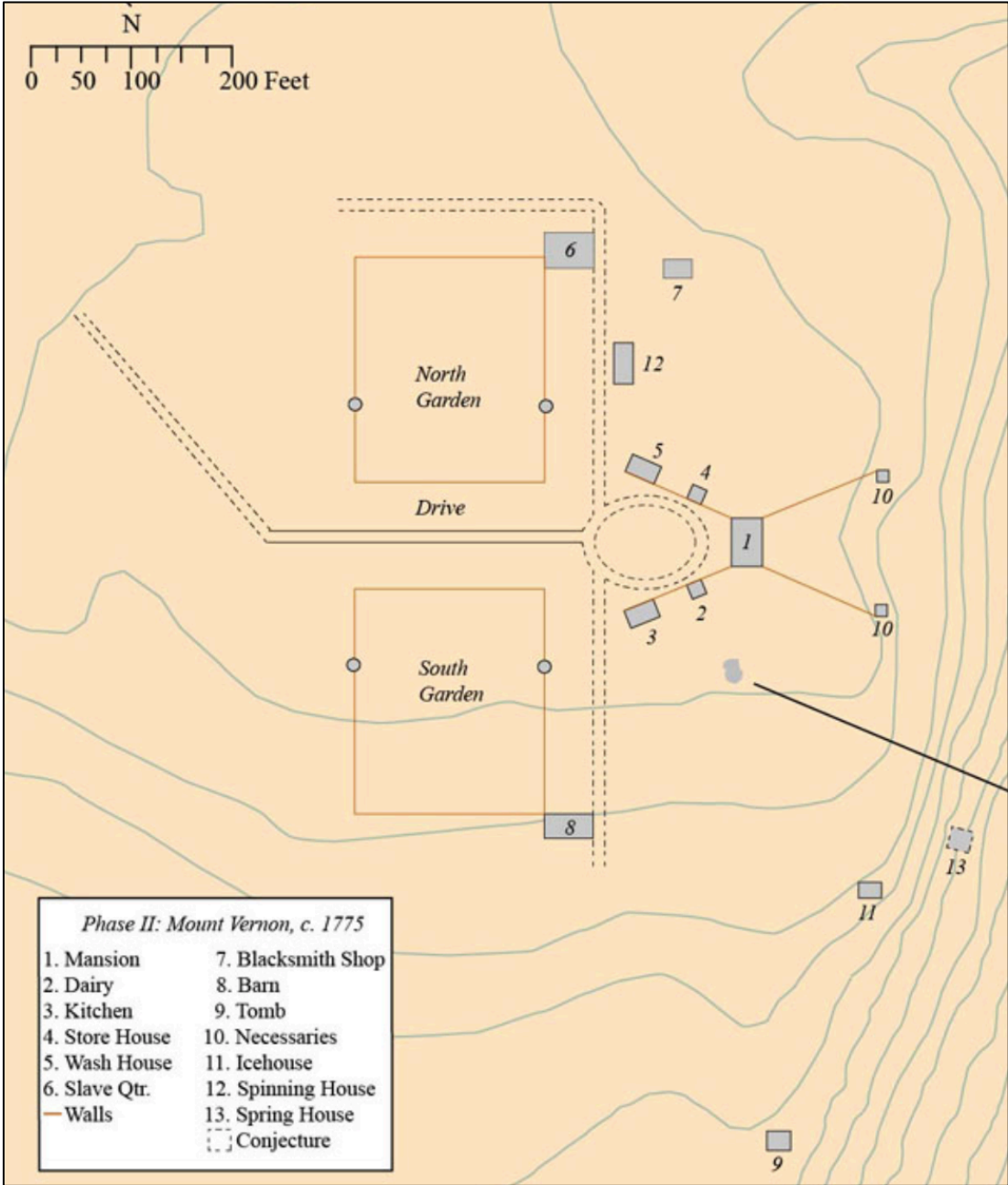


Figure 4.18: Mount Vernon c1775 estate map (Mount Vernon Ladies' Association)

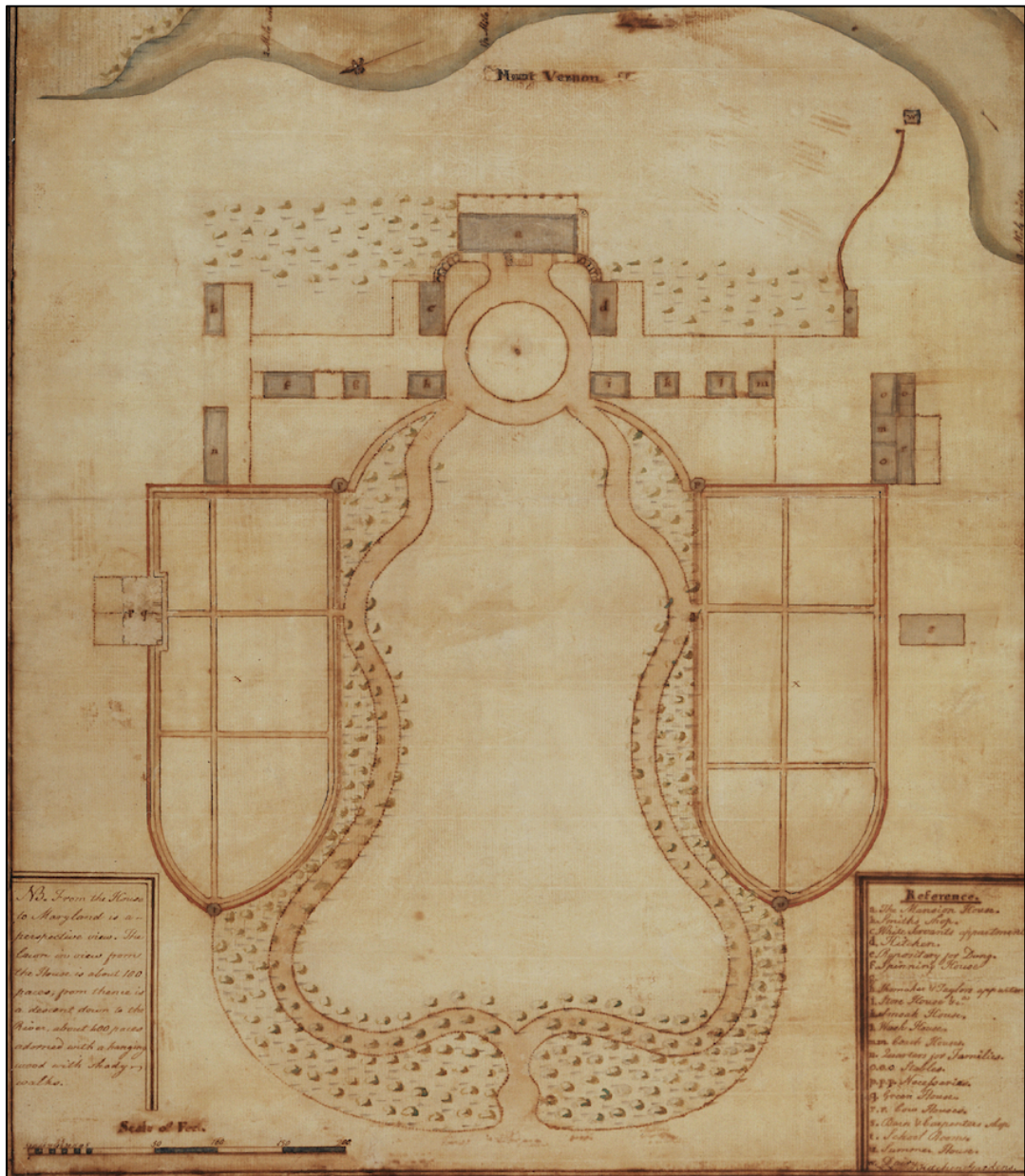


Figure 4.19: The 'Vaughan Plan' of Mount Vernon by Samuel Vaughan c1787 (Mount Vernon Ladies' Association)



Figure 4.20: 'East Front of Mount Vernon' by Edward Savage c1787-1792 (House for Families, right) (Mount Vernon Ladies' Association)

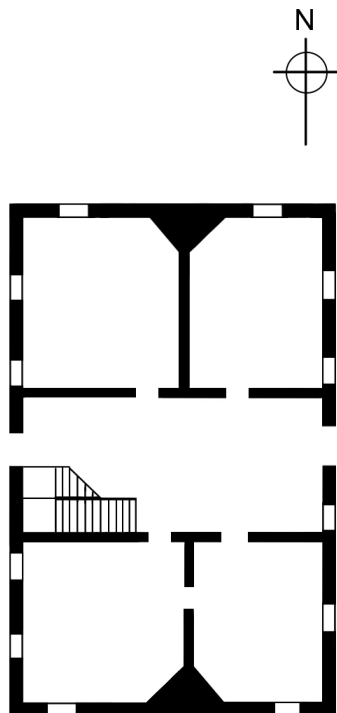


Figure 4.21: Mount Vernon conjectural plan c1752

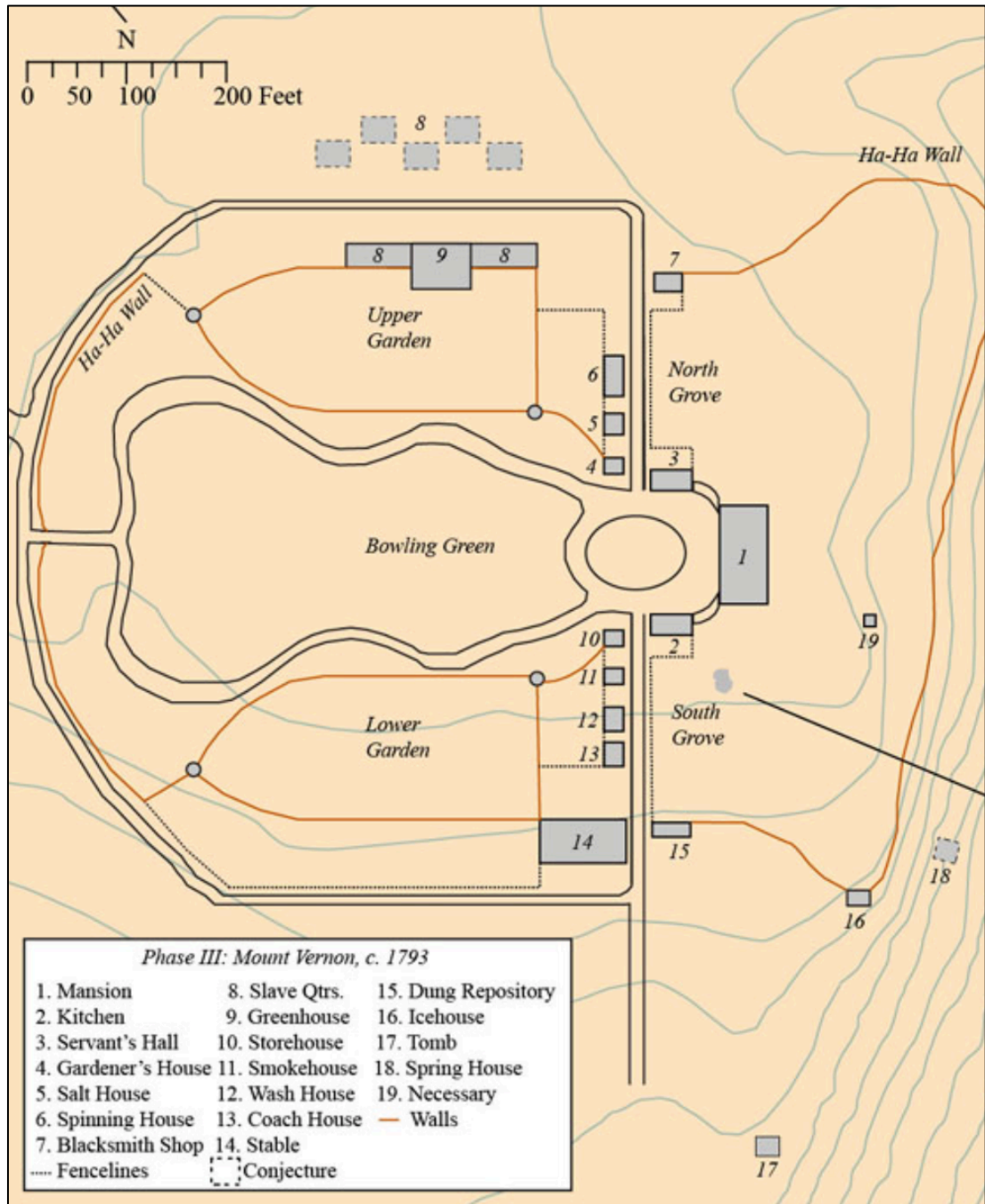


Figure 4.22: Mount Vernon c1793 estate map (Mount Vernon Ladies' Association)

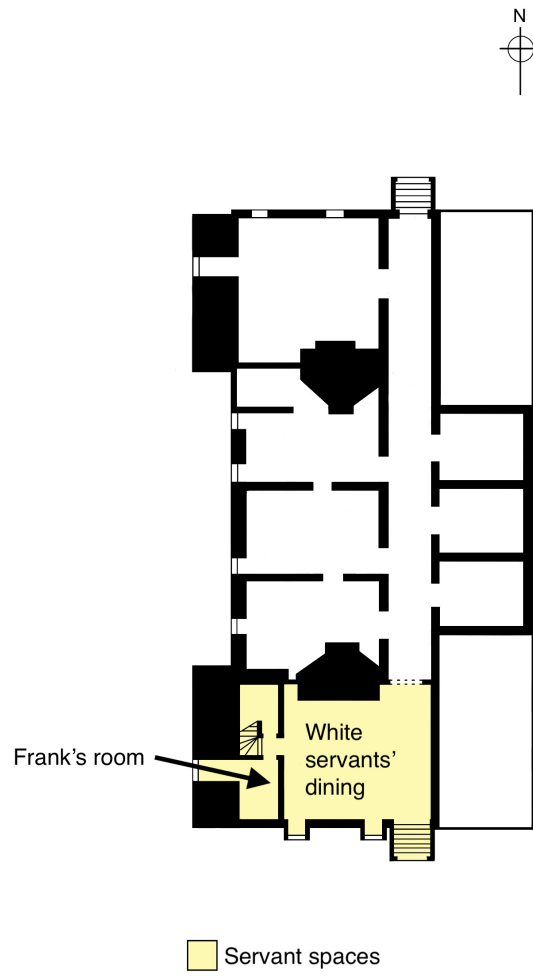


Figure 4.23: Mount Vernon c1799 Phase 2 basement floor plan

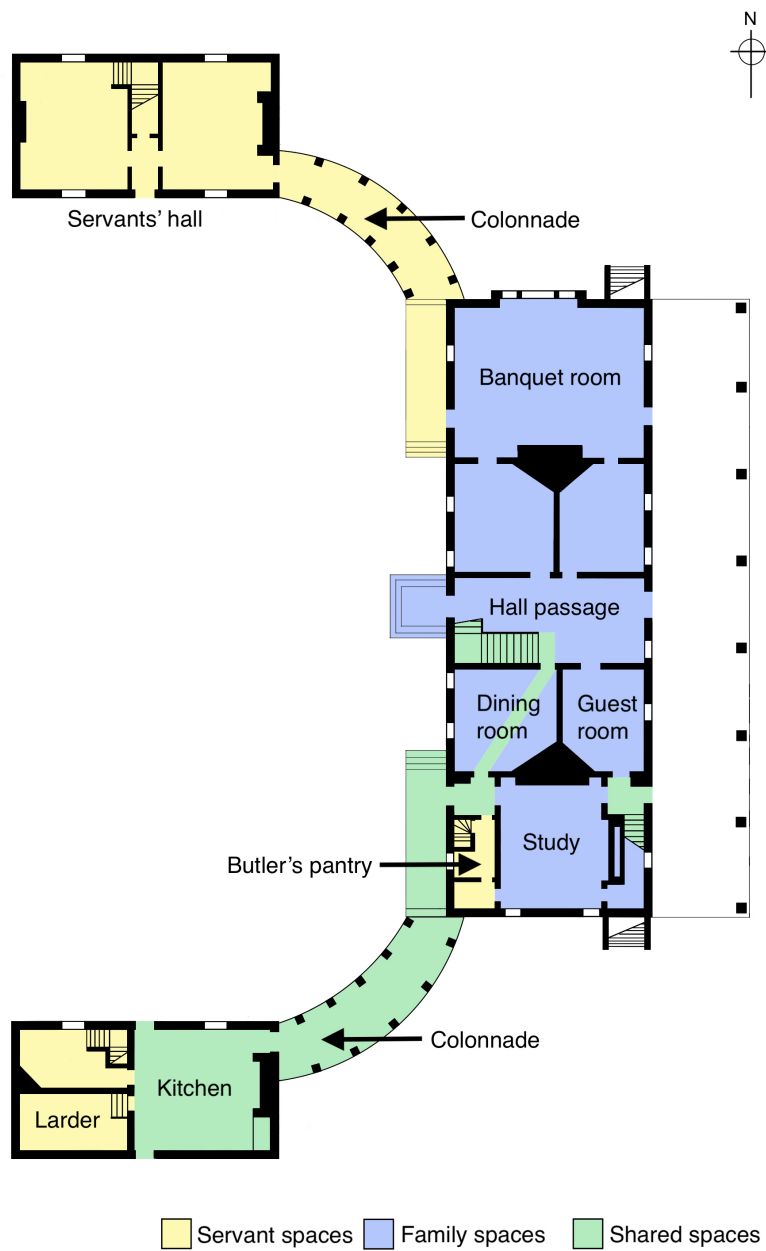


Figure 4.24: Mount Vernon c1799 Phase 2 ground floor plan

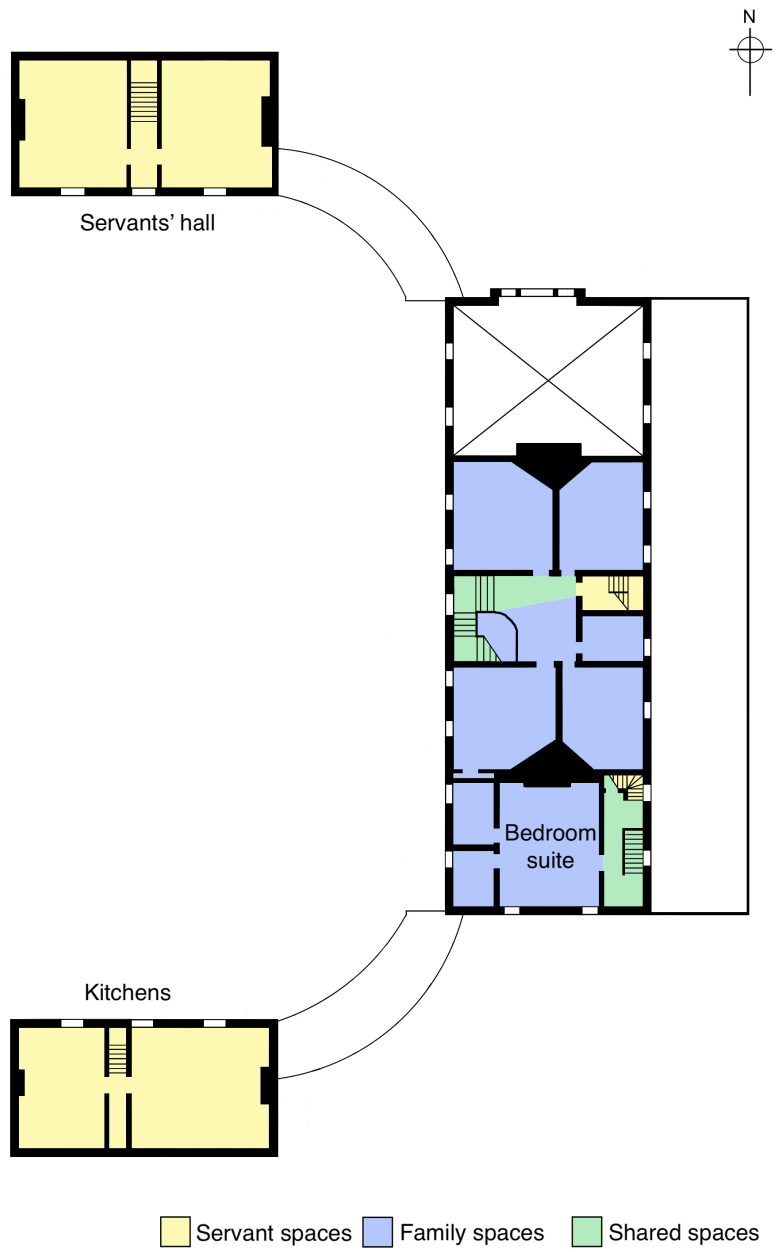


Figure 4.25: Mount Vernon c1799 Phase 2 first floor plan

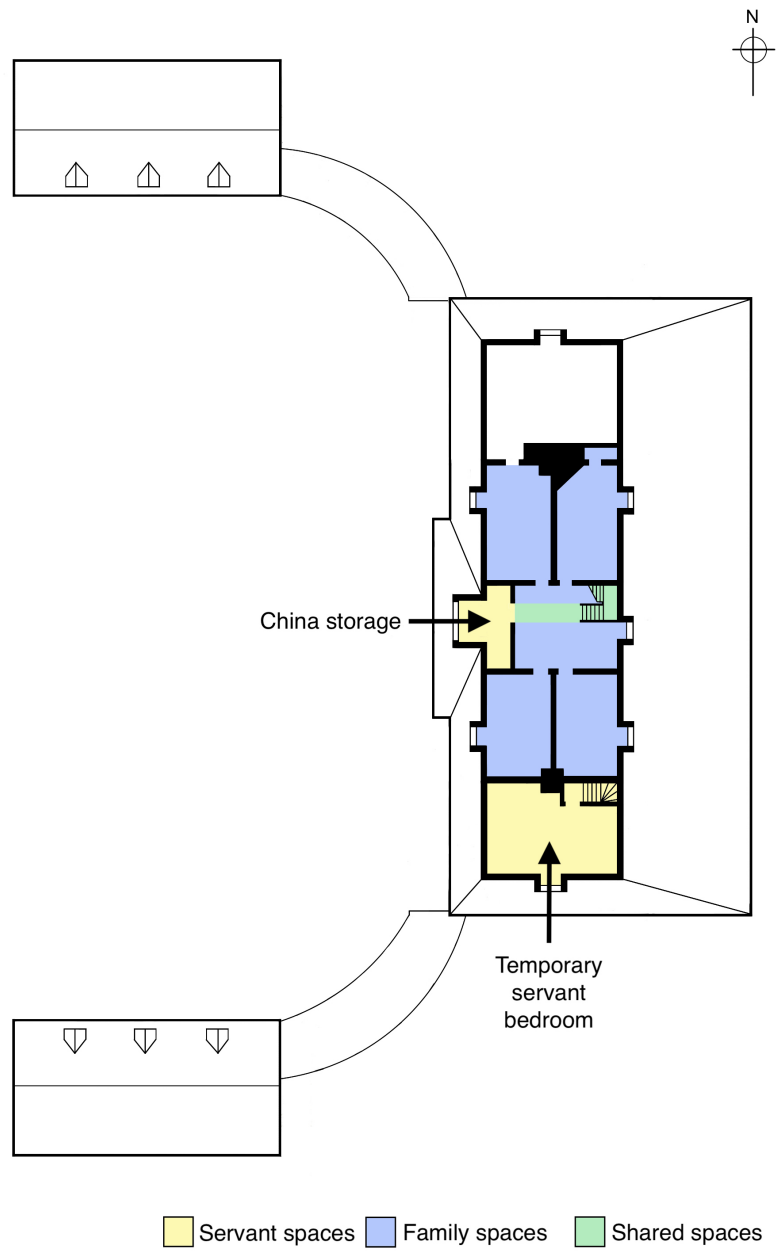


Figure 4.26: Mount Vernon c1799 Phase 2 second floor plan



Figure 5.1: Kingscote from the southwest (*Historic American Buildings Survey, HABS No. RI-307*)

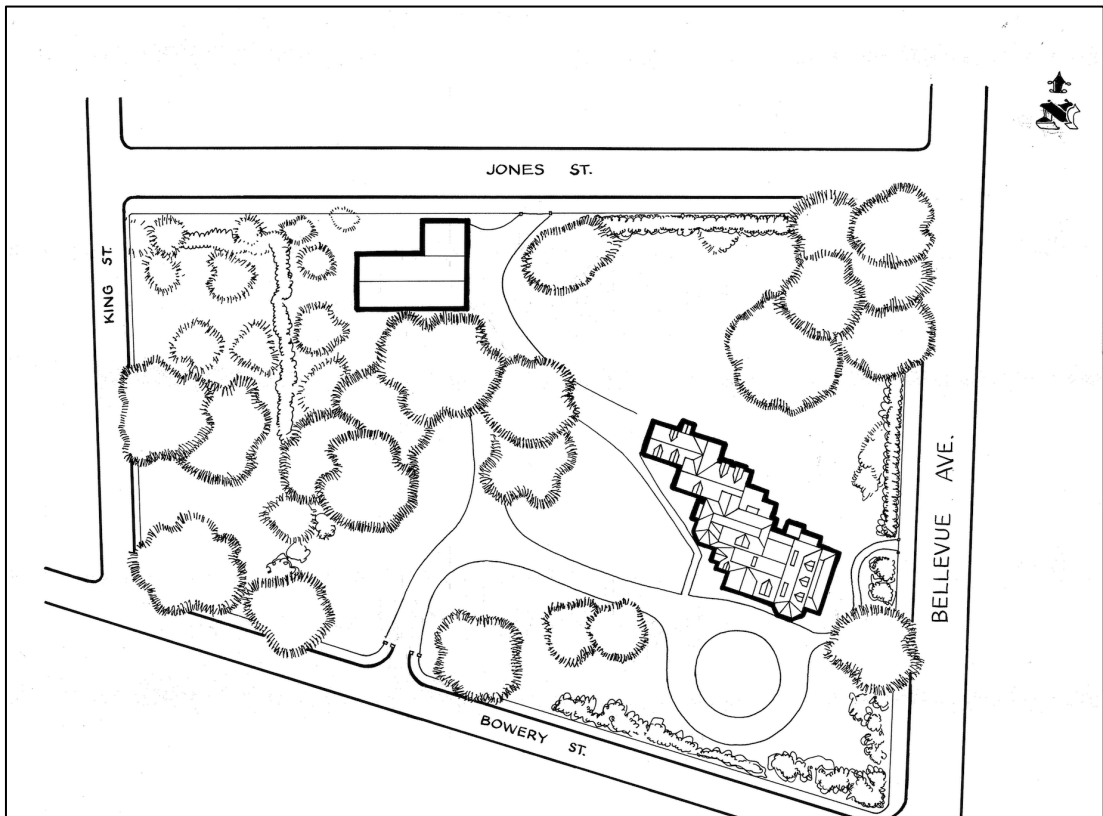


Figure 5.2: Kingscote 1969 estate map (*Historic American Buildings Survey, HABS No. RI-307*)



Figure 5.3: Kingscote south elevation



Figure 5.4: Kingscote east elevation (*Historic American Buildings Survey*, HABS No. RI-307)



Figure 5.5: Kingscote McKim, Mead and White addition (© Dms1788, cc by-sa/4.0)



Figure 5.6: Kingscote service wings (left)



Figure 5.7: Kingscote carriage house (© Jllm06, cc0/1.0)

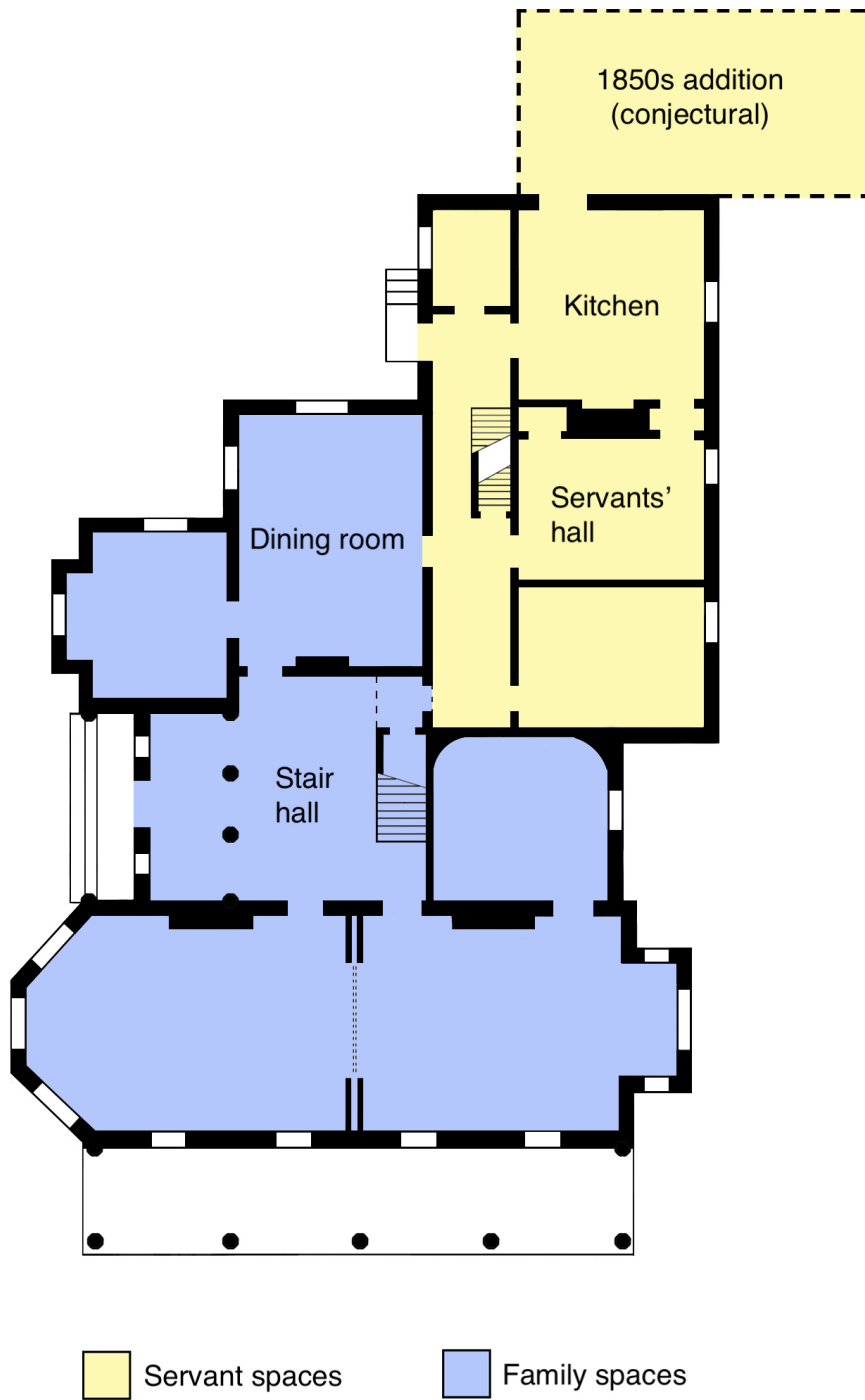
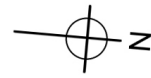


Figure 5.8: Kingscote c1859 Phase 1 ground floor plan



Figure 5.9: Kingscote c1859 Phase 1 first floor plan

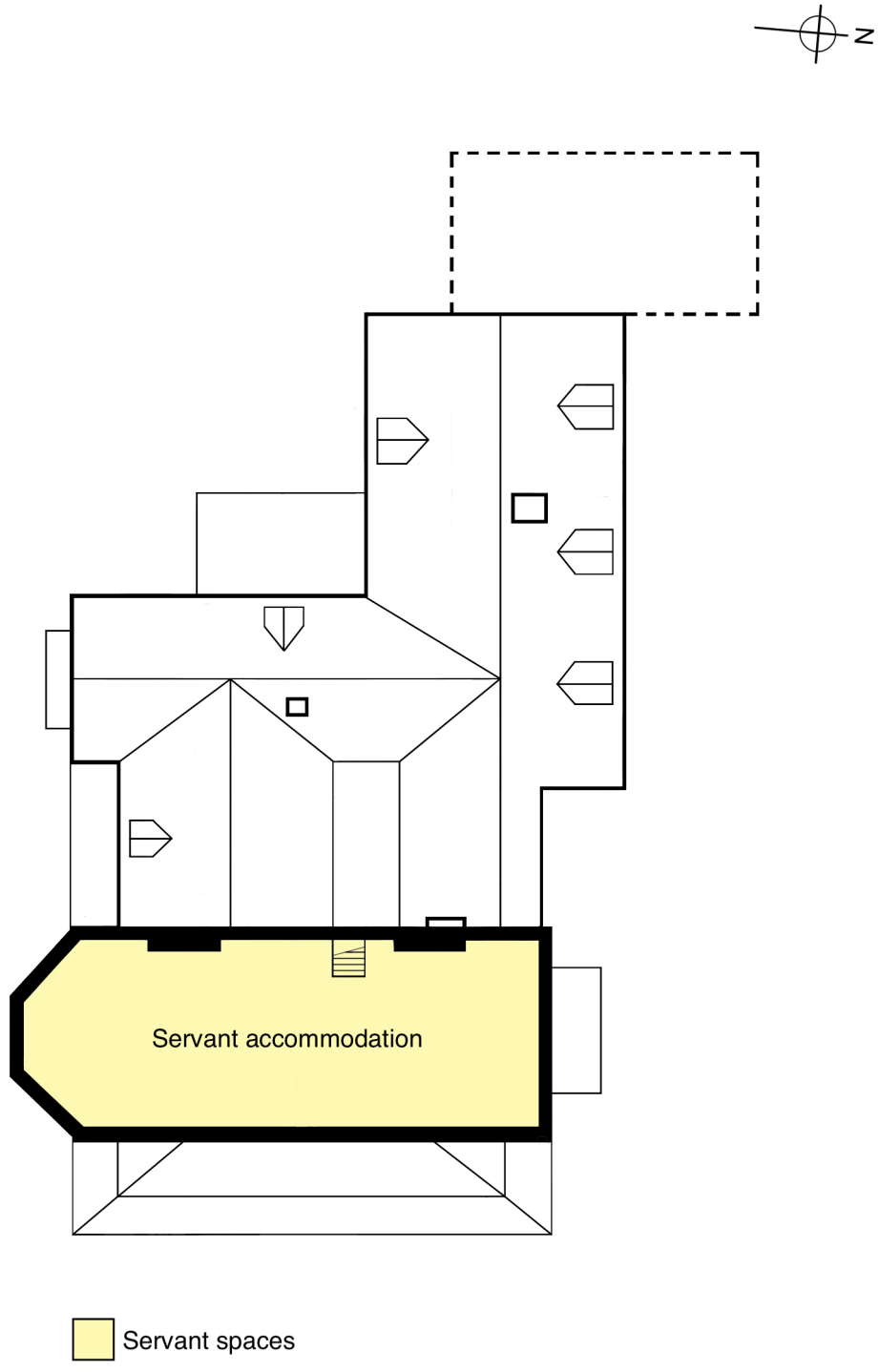


Figure 5.10: Kingscote c1859 Phase 1 second floor plan

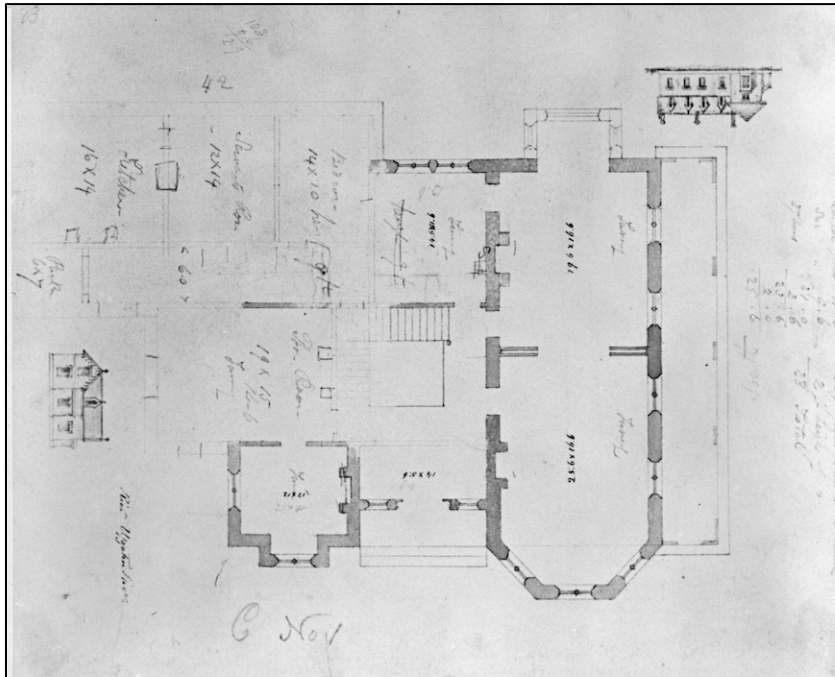


Figure 5.11: Kingscote c1839 preliminary sketch by Richard Upjohn (*Historic American Buildings Survey*, HABS No. RI-307)

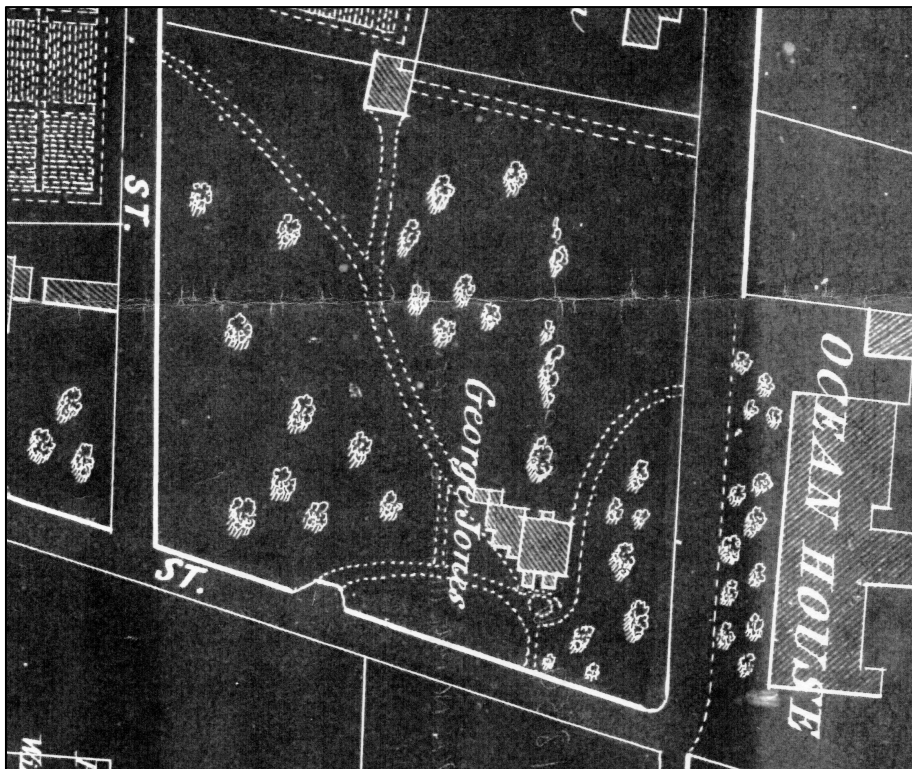


Figure 5.12: Kingscote 1850 estate map (detail, *Map of the City of Newport, RI*, Matthew Dripps, NY and B. I. Tilley, Newport. From the collections of the Newport Historical Society)



Figure 5.13: Kingscote servant door (detail)



Figure 5.14: Kingscote family door (detail)

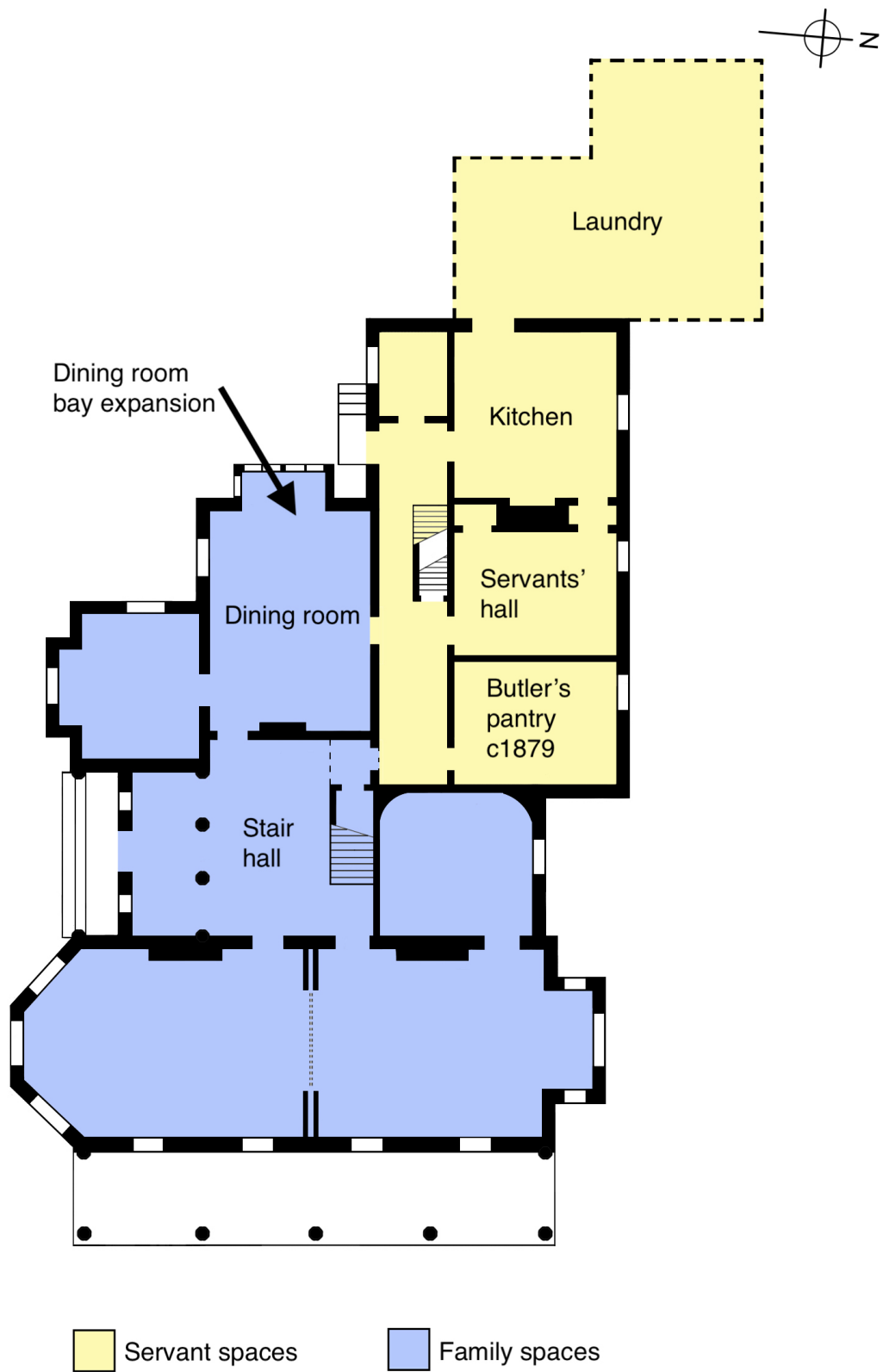


Figure 5.15: Kingscote 1878 Phase 2 ground floor plan

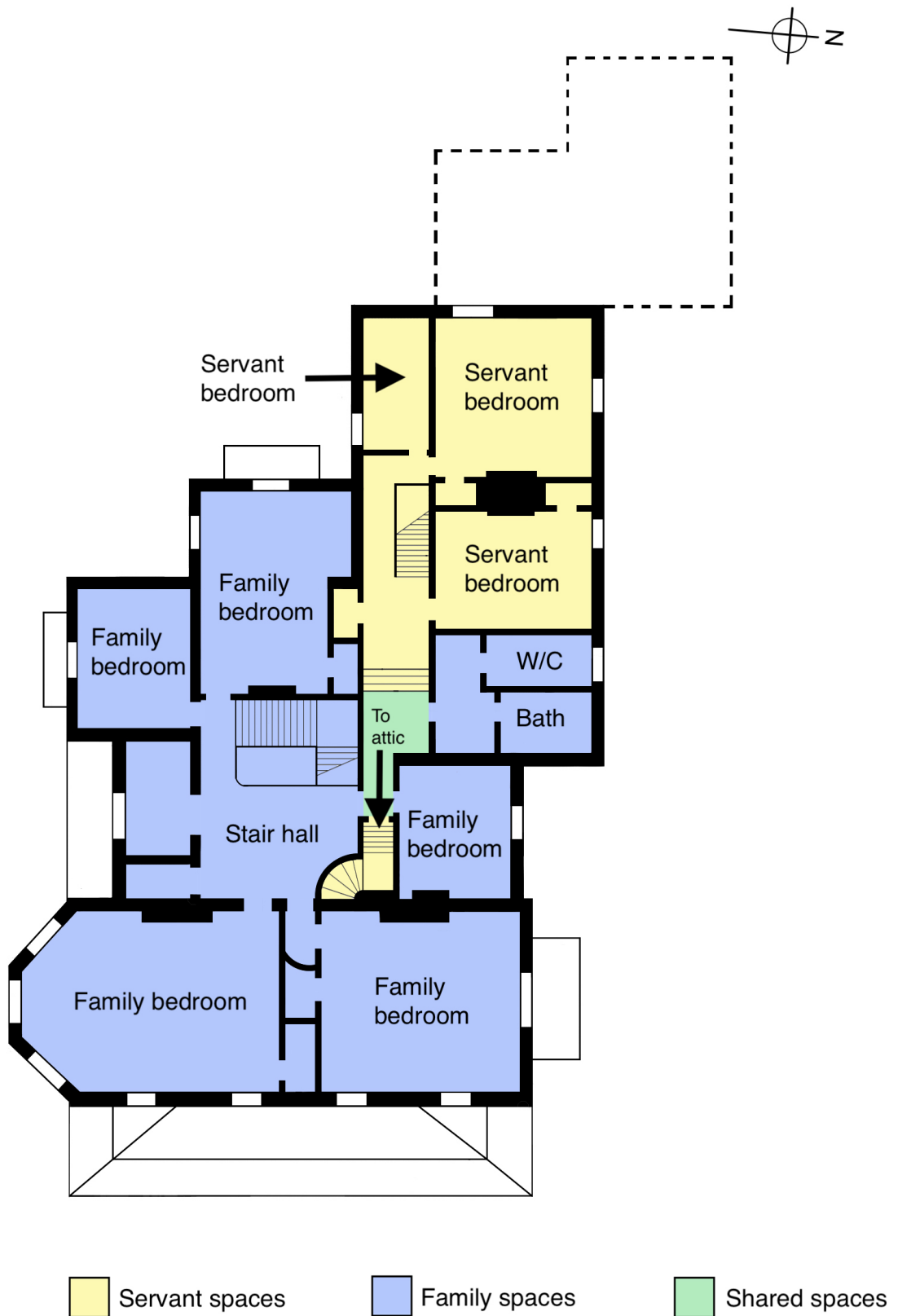


Figure 5.16: Kingscote 1878 Phase 2 first floor plan

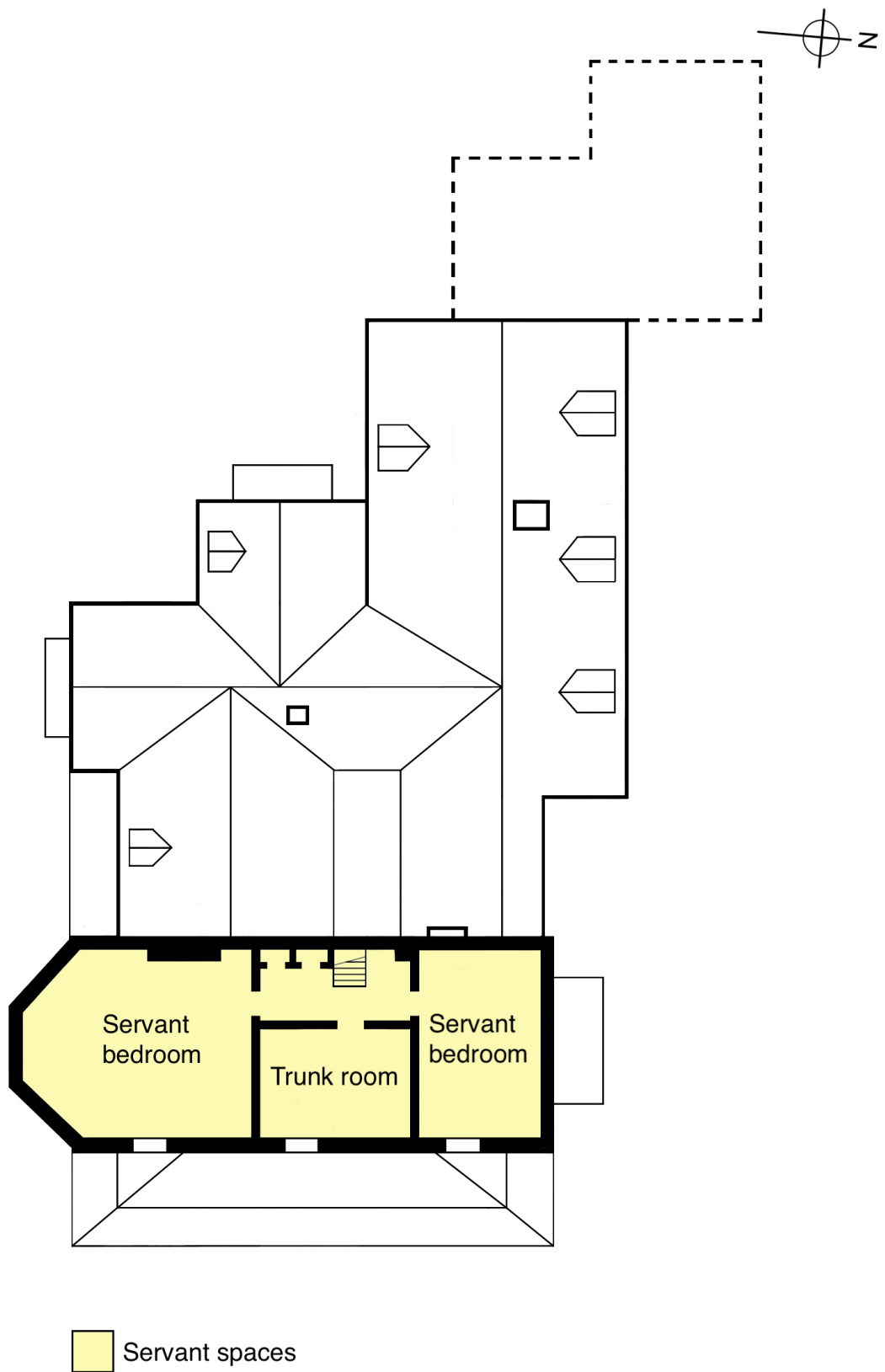


Figure 5.17: Kingscote 1878 Phase 2 second floor plan

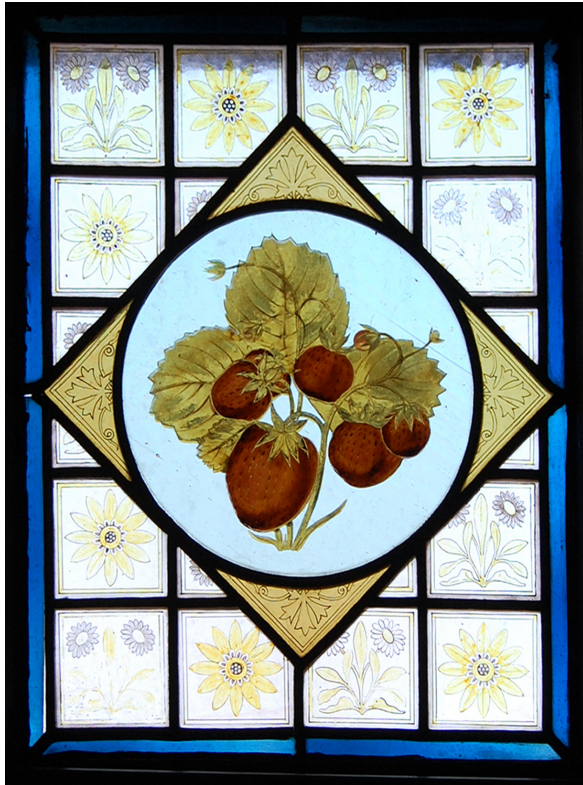


Figure 5.18: Kingscote painted glass window with fruit in original dining room



Figure 5.19: Kingscote 1878 south elevation, laundry addition left (from the collection of The Preservation Society of Newport County)



Figure 5.20: Kingscote c1880 painting by John Newell (from the collection of The Preservation Society of Newport County)

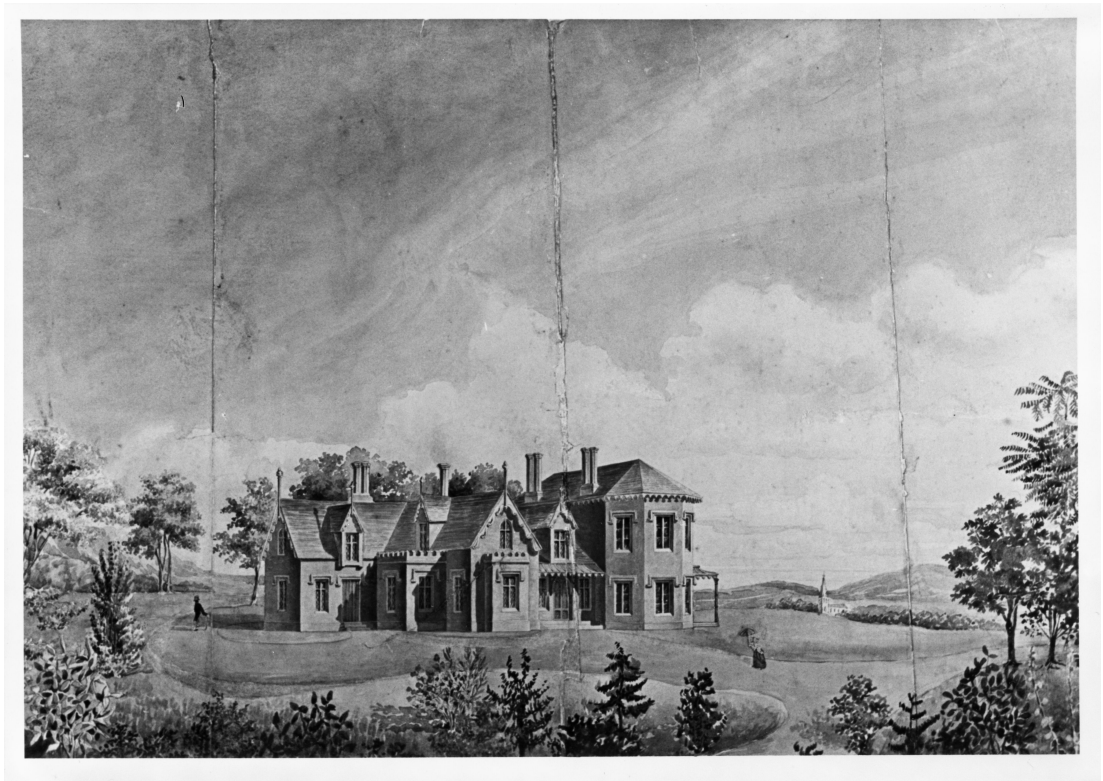


Figure 5.21: Kingscote c1839 watercolour by Richard Upjohn (*Historic American Buildings Survey*, HABS No. RI-307)



Figure 5.22: Kingscote c1882 Phase 3 ground floor plan

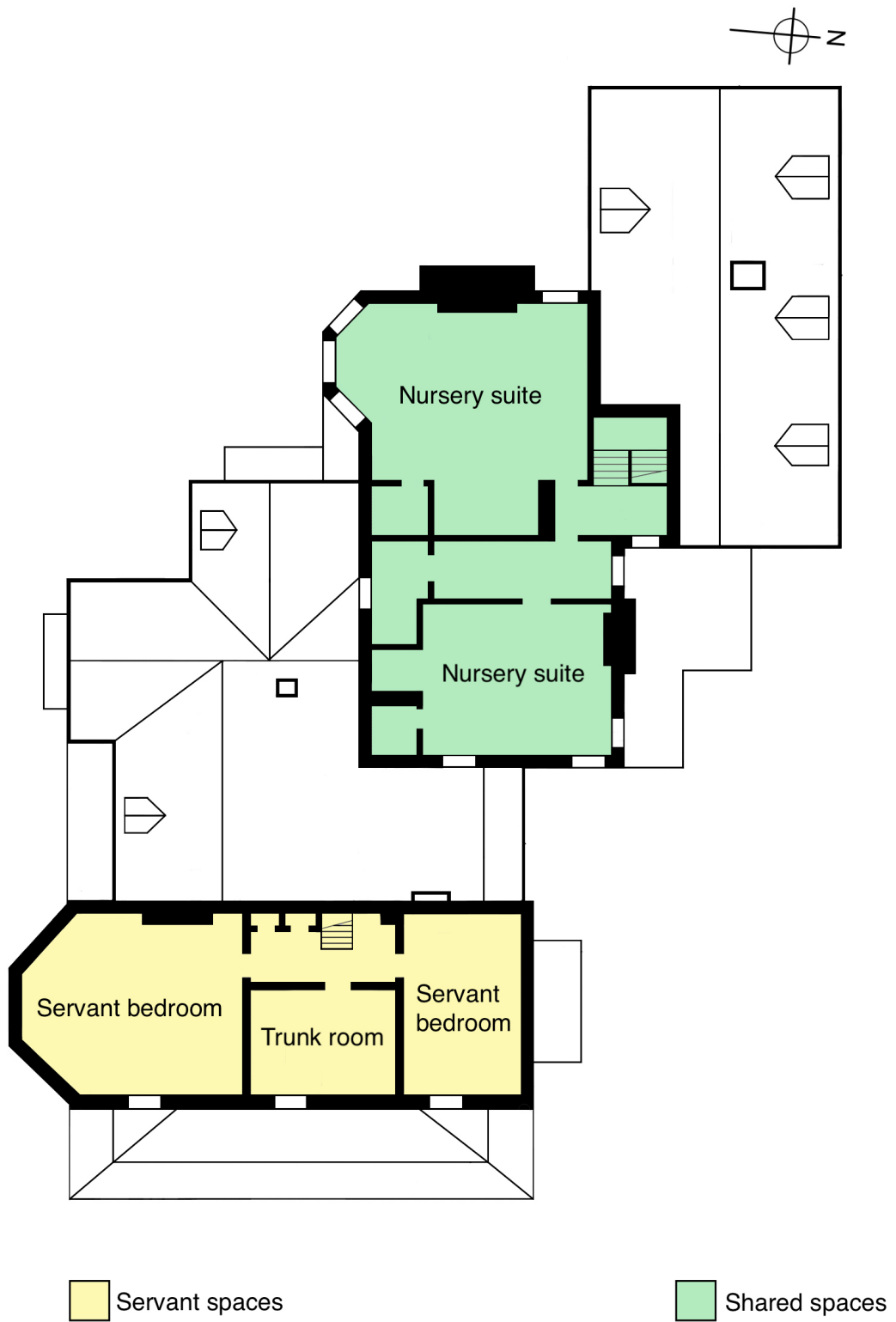


Figure 5.24: Kingscote c1882 Phase 3 second floor



Figure 5.25: Kingscote McKim, Mead and White dining room, looking west towards Tiffany glass tile wall (from the collection of The Preservation Society of Newport County)



Figure 5.26: Kingscote McKim, Mead and White dining room, looking east with moveable screens closed (*Historic American Buildings Survey*, HABS No. RI-307)



Figure 5.27: Kingscote dining room moveable screen from the east end, servant door at right (photo by Cory Dionne)



Figure 5.28: Kingscote dining room east end 'corridor' created by closing moveable screens (left) (photo by John Lupfer)

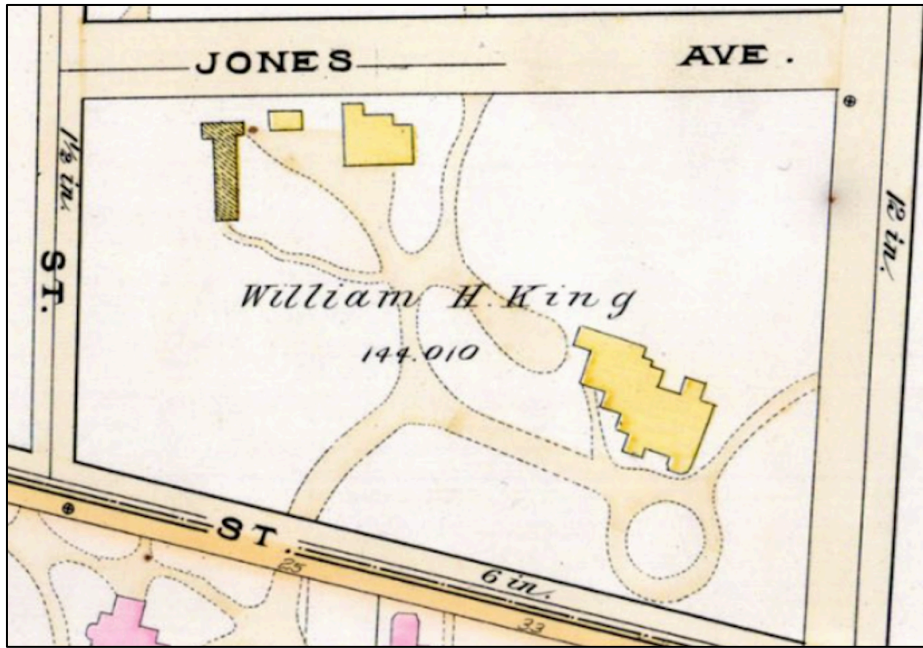


Figure 5.29: Kingscote 1893 estate map (detail, *Atlas of the City of Newport*, L. J. Richards and Co, Springfield, MA. From the collection of The Preservation Society of Newport County, available at newportmapproject.weebly.com)

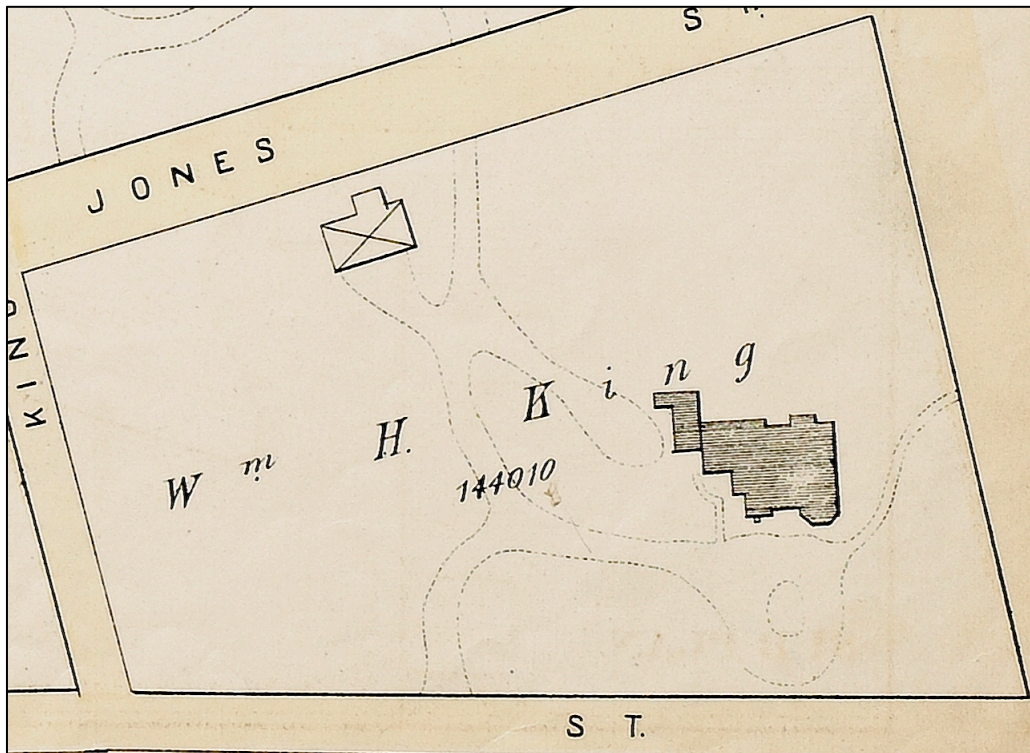


Figure 5.30: Kingscote 1876 estate map (detail, *City Atlas of Newport*, G. M. Hopkins, Philadelphia, PA. From the collection of the Redwood Library and Athenaeum, available at newportmapproject.weebly.com)



Figure 5.31: Kingscote 1883 estate map (detail, *City Atlas of Newport*, G. M. Hopkins, Philadelphia, PA, plate 4. From the collection of the Redwood Library and Athenaeum, available at newportmapproject.weebly.com)

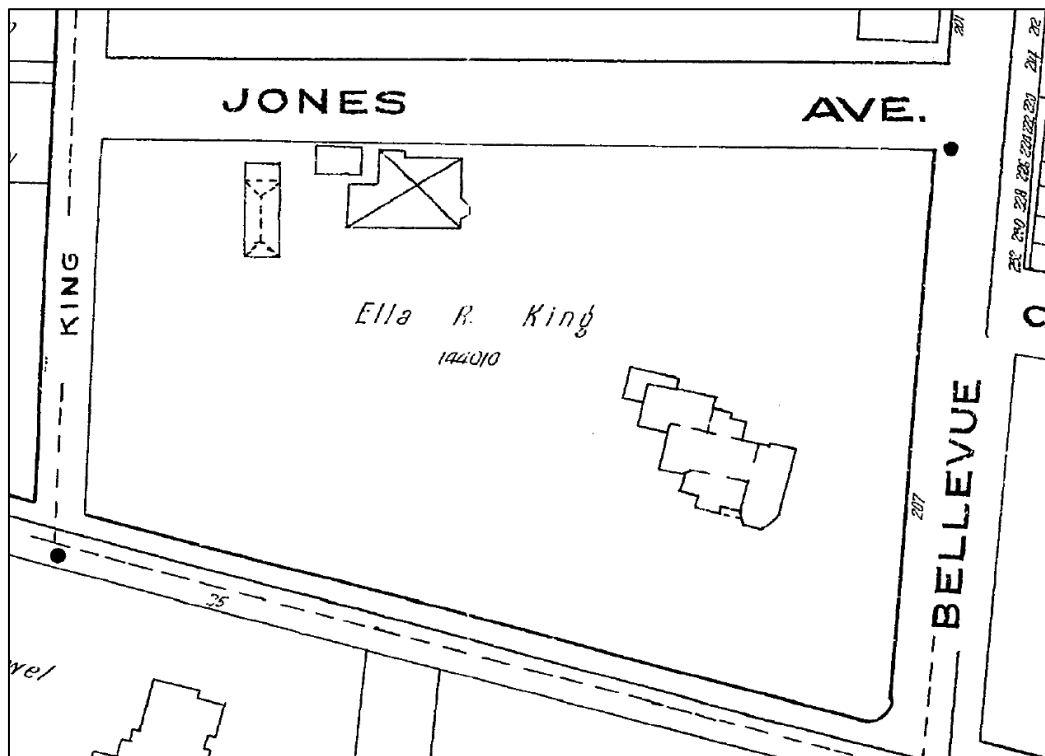


Figure 5.32: Kingscote 1921 estate map (detail, *Atlas of Newport, Jamestown, Middletown and Portsmouth*, Sanborn Map Co, New York, NY, sheet 9. From the collection of The Preservation Society of Newport County, available at newportmapproject.weebly.com)