

Napsh, Thyme, Trr

2017

Carlo Estolano

Student number: 108046236

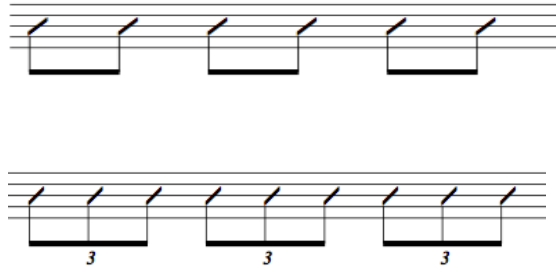
**Ensemble:** Electric guitar and piano. A set of effect pedals is used on guitar, which includes: digital delay, pitch shifter, chorus, digital reverb, octaver, overdrive.

**Duration:** Approximately 9 minutes

**Performance Notes:** Tempo, dynamics and when to move on to the next section should be devised as they go, always aiming to interact with the other instruments and keep a coherent flux of events. In this piece rhythm is the focus, therefore the use of scales, modes or atonality is intentionally not suggested.

# Napsh, Thyme, Trr

**A** - alternate between patterns:

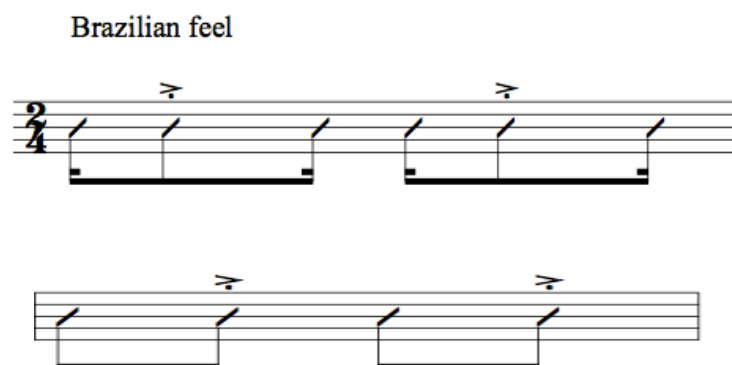


**B** — develop a groove where solos may be built:



C - alternate between patterns:

Brazilian feel



D — play four times as a vamp, then solos:

be bop feel

Fm7                      Bb7alt                      Ebmaj7                      Cm7



Coda —

