

Dante Gabriel Rossetti's Language of Flowers

Two Volumes

Volume Two

Julie Ann Whyman

PhD Dissertation
University of York
Department of History of Art

December 2019



Figure 1

Dante Gabriel Rossetti

Sancta Liliis (1874)

Oil on canvas, Support: 48.3 x 45.7 cm; Frame: 81.9 x 80.1 x 8.8 cm

Tate, London.



Figure 2
Dante Gabriel Rossetti
A Vision of Fiammetta (1878)
Oil on canvas, 140 x 81 cm
Andrew Lloyd Webber collection.



Figure 3
Dante Gabriel Rossetti
The Laurel (1864)
Pencil, 36.8 x 27.3 cm
L.S. Lowry, R. A.



Figure 4
Dante Gabriel Rossetti
Venus Verticordia (1864-1868)
Oil on canvas, 97.8 x 69.5 cm
Russell-Cotes Art Gallery and Museum,
Bournemouth.



Figure 5
John Everett Millais
Trust Me (1862)
Oil on canvas, 112 x 80 cm
Private collection.



Figure 6
James Whistler
Symphony in White no. 2: The Little White Girl (1864)
Oil on canvas, 76 x 51 cm
Tate, London.



Figure 7
Ford Madox Brown
Work (1852- 63)
Oil on canvas, 137 x 198 cm
Manchester Art Gallery.



Figure 8
Edward Coley Burne-Jones
Portrait of Georgiana Burne-Jones (ca.1883)
Oil on canvas, 76 x 53 cm
Private collection.



Figure 9
Gerard's *Herball* Woodblock Illustrations for the Pansy, (page 854)
compared to the herbal illustration in Edward Burne-Jones's
Portrait of Georgiana (fig. 8).



Figure 10
Dante Gabriel Rossetti
The Girlhood of Mary Virgin (1848-49)
Oil on canvas, 83.5 x 65.5 cm
Tate, London.



Figure 11
Dante Gabriel Rossetti
The Blessed Damozel (1875-81)
Oil on canvas, 110.5 x 82.5 cm
Lady Lever Art Gallery, Port Sunlight.



Figure 12
Dante Gabriel Rossetti
Girl at a Lattice (1862)
Oil on canvas, 29.2 x 25.5 cm
Fitzwilliam Museum, Cambridge.



Figure 13
Dante Gabriel Rossetti
Bocca Baciata (1859)
Oil on panel, 32.1 x 27 cm
Museum of Fine Arts, Boston.

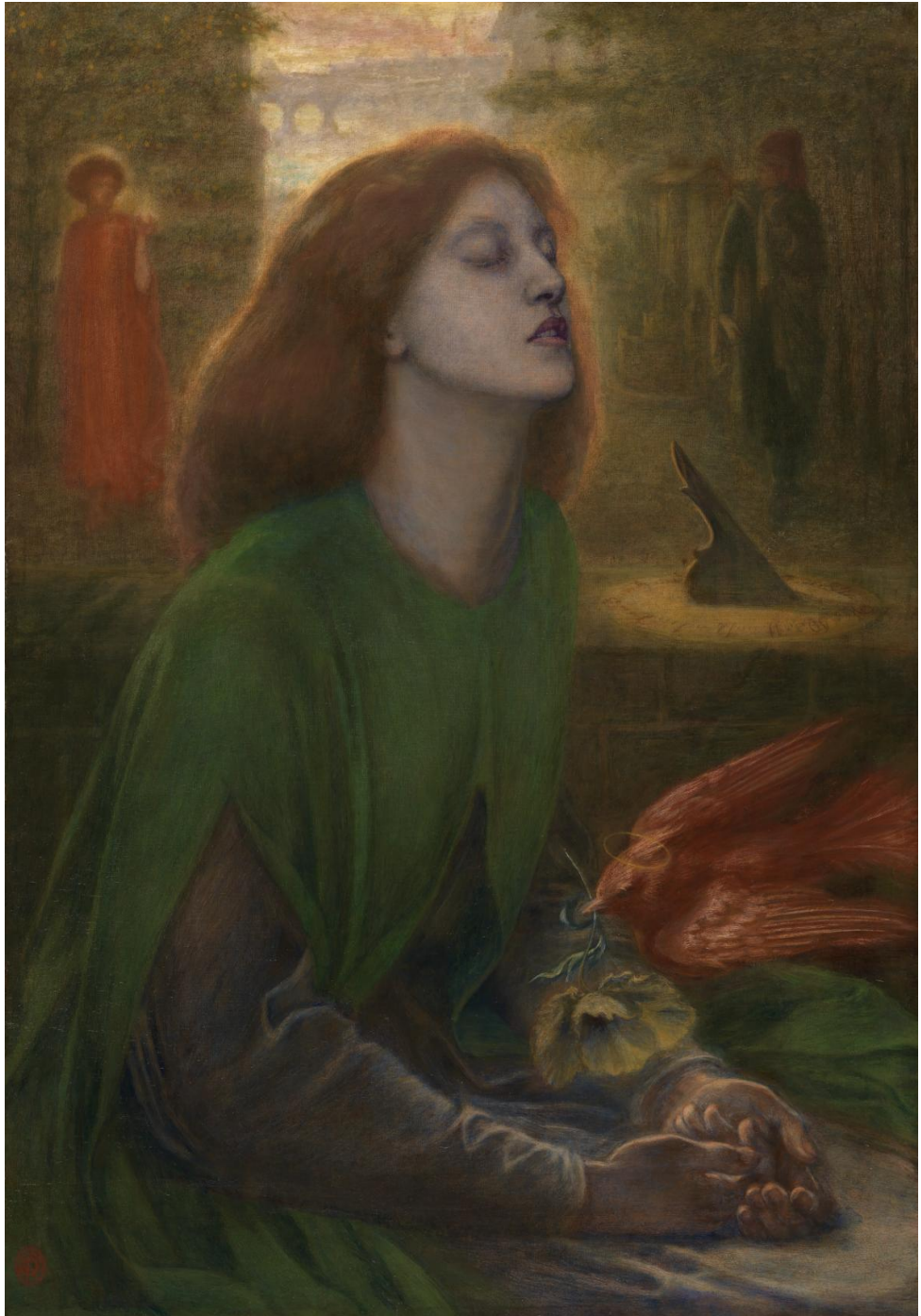


Figure 14
Dante Gabriel Rossetti
Beata Beatrix (1864-70)
Oil on canvas, 86.4 x 66 cm
Tate, London.



Figure 15
Dante Gabriel Rossetti
Ecce Ancilla Domini! (The Annunciation) (1849-50)
Oil on canvas, 72.4 x 41.9 cm
Tate, London.



Figure 16
Dante Gabriel Rossetti
Found (unfinished) (1854-82)
Oil on canvas, 91.5 x 80 cm
Delaware Art Museum.



Figure 17
Dante Gabriel Rossetti
Veronica Veronese (1872)
Oil on canvas, 109.2 x 88.9 cm
Delaware Art Museum.



Figure 18
Dante Gabriel Rossetti
The Bower Meadow (1872)
Oil on canvas, 85 x 67.3 cm
Manchester City Art Gallery.



Figure 19
Dante Gabriel Rossetti
Dis Manibus (The Roman Widow) (1874)
Oil on canvas, 103.7 x 91.2 cm
Museo de Arte de Ponce, Puerto Rico.



Figure 20
Dante Gabriel Rossetti
A Sea-Spell (1877)
Oil on canvas, 142.2 x 122.6 x 8.9 cm (framed)
Fogg Museum, Harvard.



Figure 21
Dante Gabriel Rossetti
Regina Cordium (1860)
Oil on panel, 26 x 21.5 cm
Johannesburg Art Gallery.

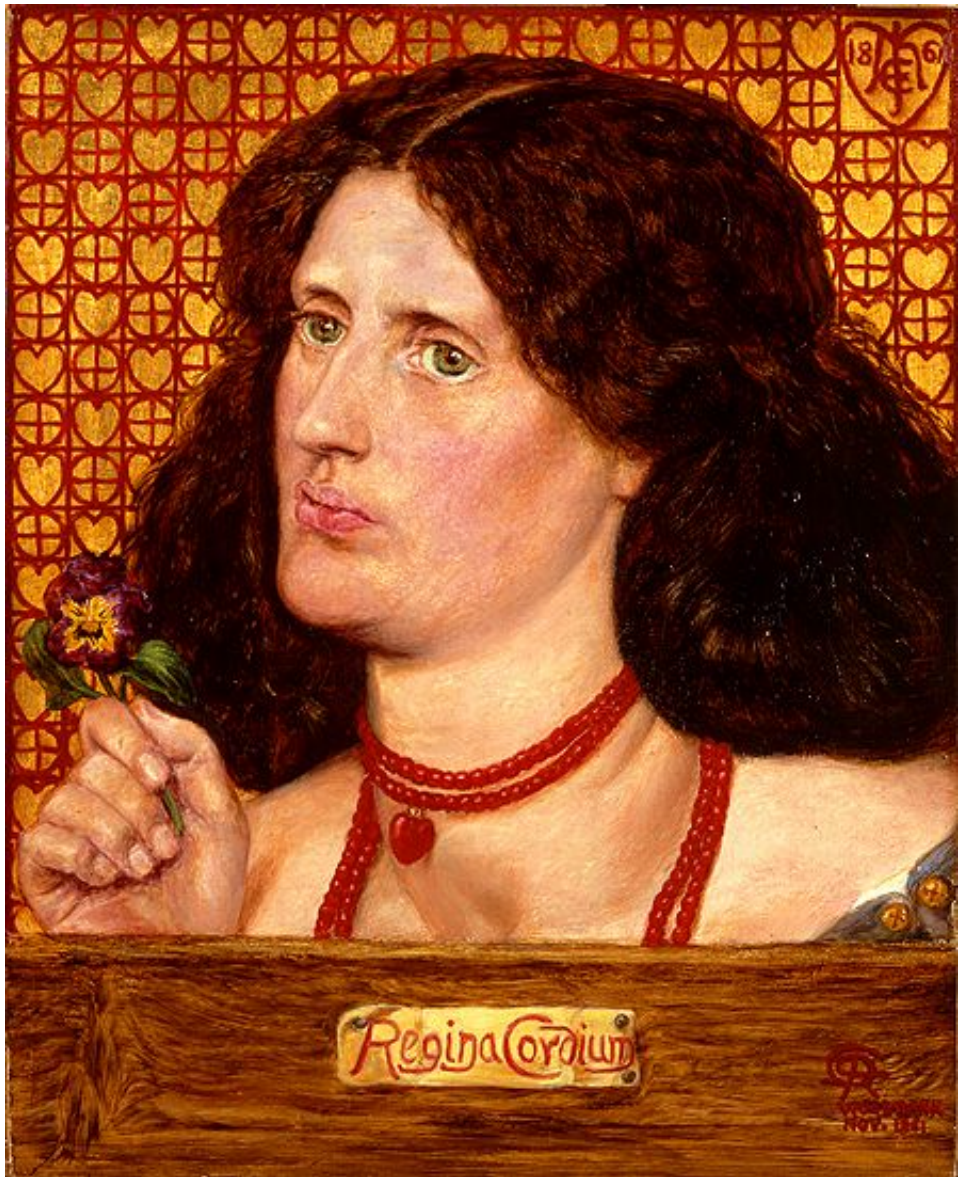


Figure 22
Dante Gabriel Rossetti
Regina Cordium (Mrs Aldam Heaton) (1861)
Oil on panel, 27.3 x 21,6 cm
Private collection.



Figure 23
Dante Gabriel Rossetti
Study for **Water Willow** (1871)
Coloured chalk on pale green paper, 33.9 x 27.3 cm
Birmingham Museum and Art Gallery.



Figure 24
Dante Gabriel Rossetti
Mnemosyne (1881)
Oil on canvas, 120.7 x 58.4 cm
Delaware Art Museum.



Figure 25
Dante Gabriel Rossetti
Love's Greeting (ca. 1861)
Oil on panel, 57 x 61 cm
Isabella Stewart Gardner Museum.



Figure 26
Dante Gabriel Rossetti
A Sea-Spell (detail) with wild rose (left) and anemone comparison.



Figure 27
Dante Gabriel Rossetti
La Ghirlandata (1871-74)
Oil on canvas, 115.6 x 87.6 cm
Guildhall Art Gallery, London.



Figure 28
Dante Gabriel Rossetti
Joli Coeur (1867)
Oil on mahogany, 38.1 x 30.2 cm
Manchester Art Gallery.



Figure 29
Dante Gabriel Rossetti
The Beloved (detail) (1865-66)
Oil on canvas, 80 x 76 cm
Tate Britain, London.



Figure 30
Dante Gabriel Rossetti
Beatrice (1869)
Oil on canvas, 57.1 x 47 cm
Private collection.



Figure 31
Comparison of *Beatrice* (1869) and
Mariana (1870).



Figure 32
Dante Gabriel Rossetti
Helen of Troy (1863)
Oil on canvas, 32.8 x 27.7 cm
Hamburger Kunsthalle.



Figure 33
Dante Gabriel Rossetti
The Blue Bower (1865)
Oil on canvas, 84 x 70.9 cm
Barber Institute of Fine Arts, University of Birmingham.



Figure 34
Dante Gabriel Rossetti
Regina Cordium (1866)
Oil on canvas mounted on panel, 59.7 x 49.5 cm
Kelvingrove Art Gallery.



Figure 35
Dante Gabriel Rossetti
Lady Lilith (1866-68 & 1872-73)
Oil on canvas, 97.8 x 85.1 cm
Delaware Art Museum.



Figure 36
Dante Gabriel Rossetti
La Bello Mano (1875)
Oil on canvas, 157.5 x 106.7 cm
Delaware Art Museum.



Figure 37
Veronica Veronese Compositional Schematic.



Figure 38
Dante Gabriel Rossetti
St Catherine (1853-57)
Oil on canvas, 34.3 x 24.1 cm
Tate, London.



Figure 39
Dante Gabriel Rossetti
The Salutation of Beatrice (second of two panels) (1859-63)
Oil on panel, 74.9 x 80 cm (each)
National Gallery of Canada, Ottawa.



Figure 40
Dante Gabriel Rossetti
Belcolore (1863)
Oil on panel, 27 cm diameter
Private collection.



Figure 41
Dante Gabriel Rossetti
The Day Dream (Monna Primavera) (1880)
Oil on canvas, 158.75 x 92.7 cm
Victoria & Albert Museum, London.



Figure 42
Dante Gabriel
Blanzifiore (Snowdrops) (1873)
Oil on canvas, 34 x 40.6 cm
Andrew Lloyd Webber collection.



Figure 43
Dante Gabriel Rossetti
La Donna della Finestra (The Lady of Pity) (1879)
Oil on canvas, 100.7 x 74 cm
Fogg Art Museum, Harvard University.



Figure 44
Henry Curtis
English Rose – Hybrid – Perpetual – Baronne Hallee (1850)
Lithograph, 13 x 10 inches
Private collection.



Figure 45
Convolvulus (1787)
William Curtis Botanical Magazine.

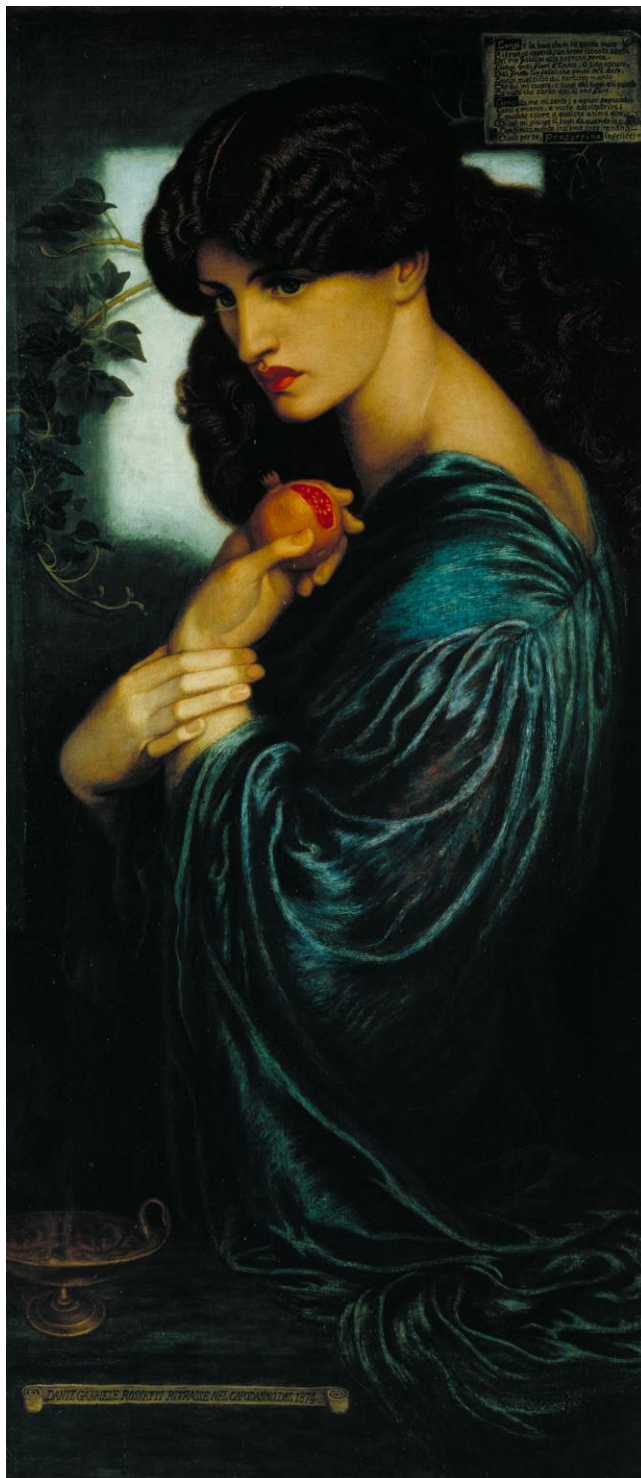


Figure 46
Dante Gabriel Rossetti
Proserpine (1874)
Oil on canvas, 125 x 61 cm
Tate Britain.



Figure 47
Dante Gabriel Rossetti
Study for Venus Verticordia (ca. 1863)
Red Chalk Drawing, 77 x 62 cm
Farrington Collection, Buscot Park.

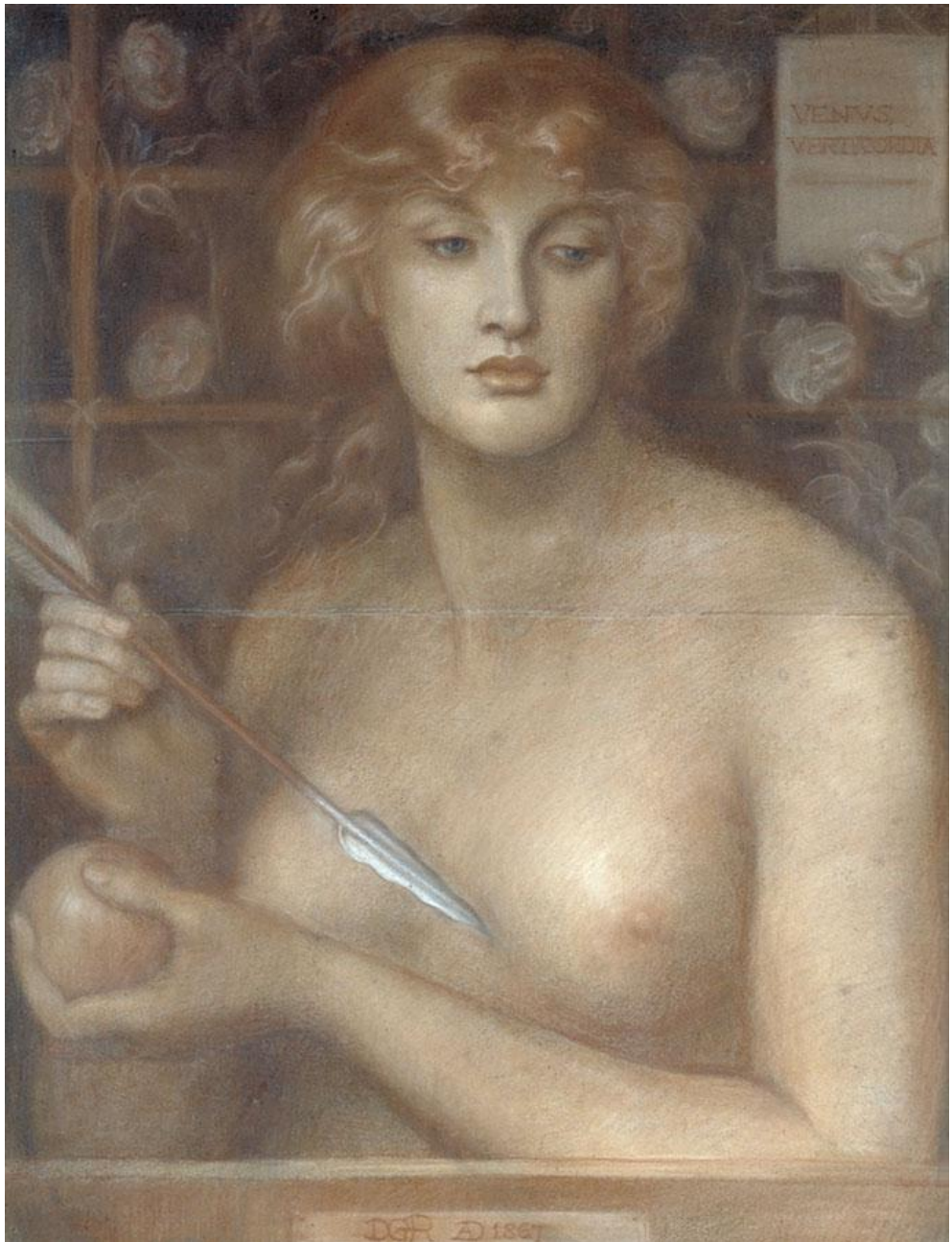


Figure 48
Dante Gabriel Rossetti
Study for Venus Verticordia (ca. 1863)
Red chalk with some white, blue and black, 77 x 59 cm
Private collection.



Figure 49
John Ruskin
Study of a Wild Rose (1871)
Watercolour and body colour over graphite on wove paper,
42.2 x 26.8 cm Ashmolean Museum, Oxford.

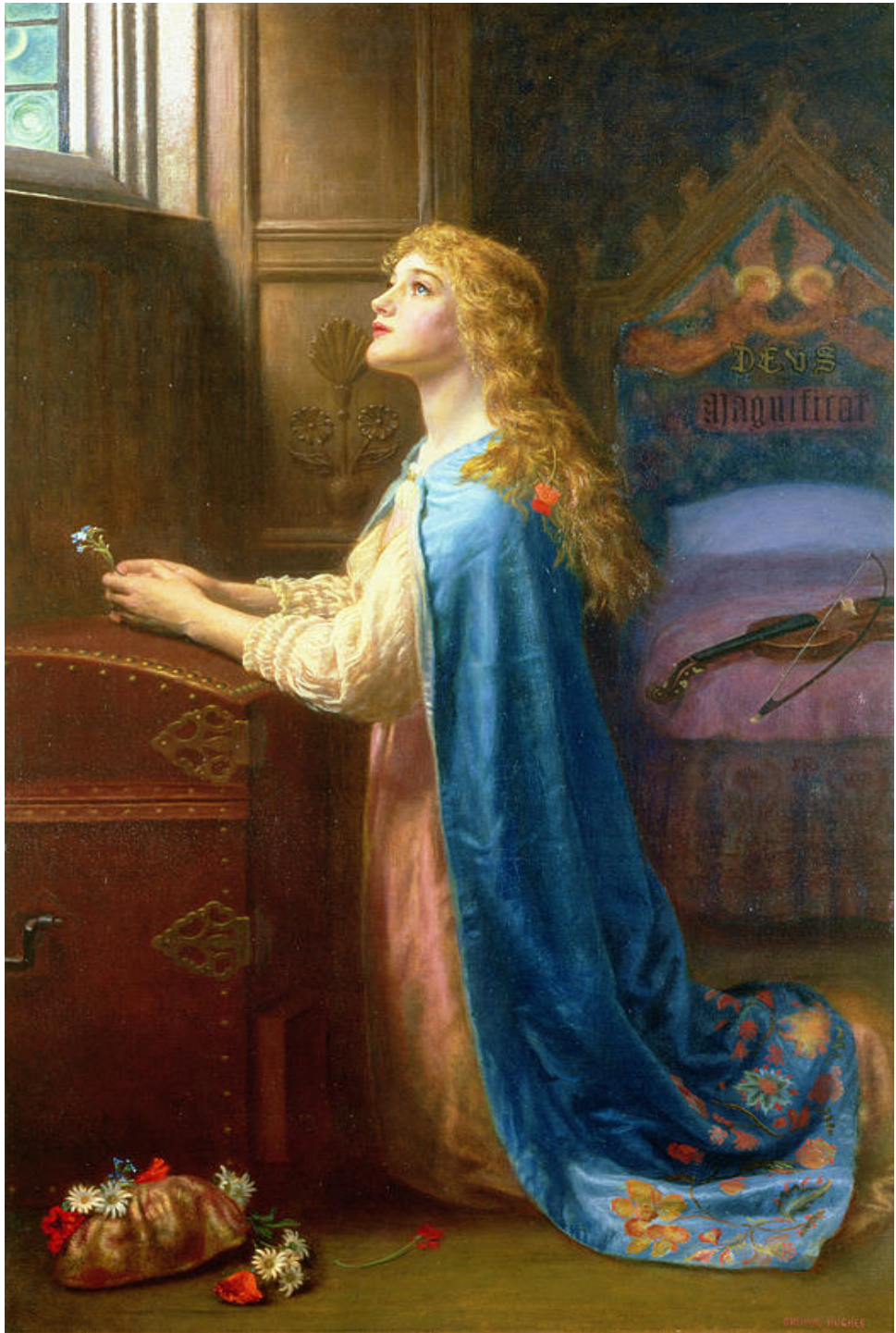


Figure 50
Arthur Hughes
Forget Me Not (ca. 1901)
Oil on canvas, 108 x 64 cm
Private collection.



Figure 51
Arthur Hughes)
Annunciation (1857-58)
Oil on canvas, 35.8 x 61.2 cm
Birmingham Museum & Art Gallery.



Figure 52
Detail from the panorama of mosaics at the Basilica
of Sant'Apollinare Nuovo, Ravenna, 500-525 CE.



Figure 53
Fra. *Angelico*
Annunciation (detail), ca. late 1430s
Fresco,
Convento di San Marco, Florence.



Figure 54
Dante Gabriel Rossetti
Ecce Ancilla Domini!– Female Nude – Study for the Virgin (1849)
Pencil on pale blue paper, 9.8 x 17.7 cm
Birmingham Museum and Art Gallery.



Figure 55
Dante Gabriel Rossetti
Annunciation (1855)
Watercolour, 35.6 x 24.1 cm
Private collection.



Figure 56
Dante Gabriel Rossetti
Fanny Cornforth and G. P. Boyce (ca.1858)
Pen and ink on paper 21.5 x 31.1 cm
Tullie House Museum & Art Gallery, Carlisle.



Figure 57
John Everett Millais
The Bridesmaid (1851)
Oil on panel, 27.9 x 20.3 cm
Fitzwilliam Museum, Cambridge.



Figure 58
Edward Coley Burne-Jones
The Beguiling of Merlin (1872-77)
Oil on canvas, 186 x 111 cm
Lady Lever Art Gallery, Port Sunlight.



Figure 59
Giovanni Bellini
Woman with a Mirror (1515)
Oil on canvas, 62 x 79 cm
Kunsthistorisches Museum, Vienna.



Figure 60
Titian
Woman with a Mirror (ca. 1512-15)
Oil on canvas, 99 x 76 cm
Louvre, Paris.



Figure 61
Dante Gabriel Rossetti
Lady Lilith Compositional Schematic.



Fig 62
Dante Gabriel Rossetti
Curled feline illustration from Letter to William Michael Rossetti,
17 February 1867.



Figure 63
William Holman Hunt
The Light of the World (1851-53)
Oil on canvas over panel, 125.5 x 59.8 cm
Keble College, Oxford.



Figure 64
William Holman Hunt
The Awakening Conscience (1853)
Oil on canvas 76.2 x 55.9 cm
Tate.



Figure 65
Sandro Botticelli
La Primavera (detail) (1477-82)
Tempera on panel, 203 x 314 cm
Uffizi Gallery, Florence.



Figure 66
Gian Lorenzo Bernini
The Rape of Proserpina (detail) (1621-22)
Marble, 222 cm
Galleria Borghese, Rome.



Figure 67
Dante Gabriel Rossetti
Giotto Painting the Portrait of Dante (1852)
Watercolour, 36.8 x 47 cm
Andrew Lloyd Webber collection.



Figure 68
Attributed to Giotto (1276-1337)
The Bargello Fresco, showing Dante Alighieri (centre)
Podestà Chapel, Florence.



Figure 69
Seymour Kirkup
Dante Alighieri (1841) after a fresco formerly attributed to Giotto
Lithograph, 43.2 x 31.9 cm
British Museum, London.



Figure 70
Sandro Botticelli
Madonna of the Pomegranate (detail) (ca. 1487)
Tempera on panel, 143.5 cm diameter
Uffizi, Florence.



Figure 71
Arthur Rackham (1867-1939)
Colour Illustration "*She clipped a precious lock*" frontispiece
Goblin Market by Christina Rossetti (London: George G Harrap & Co.),
1933. One of four colour plates.



Figure 72
 Dante Gabriel Rossetti
Frontispiece and title page designs
 for Christina Rossetti's, *Goblin Market & Other Poems*
 2nd edn., London & Cambridge (1865).



Figure 73
Dante Gabriel Rossetti
The Loving Cup (1867)
Oil on canvas, 45.5 x 66 cm
National Museum of Western Art, Tokyo.



Figure 74
Dante Gabriel Rossetti
La Pia de' Tolomei (1880)
Oil on canvas, 105.4 x 120.6 cm
Spencer Museum of Art, University of Kansas.



Figure 75
Daniel Maclise
The Loving Cup (1859)
Private collection.



Figure 76
Frederic Leighton
The Return of Persephone (1891)
Oil on canvas, 203.2 x 152.4 cm
Leeds City Art Gallery.



Figure 77
John Everett Millais
Spring (1859)
Oil on canvas, 113 x 176.3 cm
Lady Lever Art Gallery, Port Sunlight.



Figure 78
Dante Gabriel Rossetti
Faust: Gretchen & Mephistopheles (1848)
Pen & ink drawing, 27.3 x 20.6 cm
Private collection.



Figure 79
Charles Allston Collins
Convent Thoughts (1851)
Oil on canvas, 84 x 59 cm
Ashmolean Museum, Oxford.



Figure 80
Dante Gabriel Rossetti
Finished drawing for *Found* (1853)
Pen and ink, 21 x 19 cm
British Museum.



Figure 81
George Frederic Watts
Found Drowned (1848-50)
Oil on canvas, 119.4 x 213.4 cm
Watts Gallery.



Figure 82
John William Waterhouse
The Soul of the Rose (1908)
Oil on canvas, 88.3 x 59.1 cm
Private collection.



Figure 83

George Frederic Watts

Choosing (1864)

Oil on strawboard mounted on Gatorfoam, 47.2 x 35.4 cm
National Portrait Gallery, London.

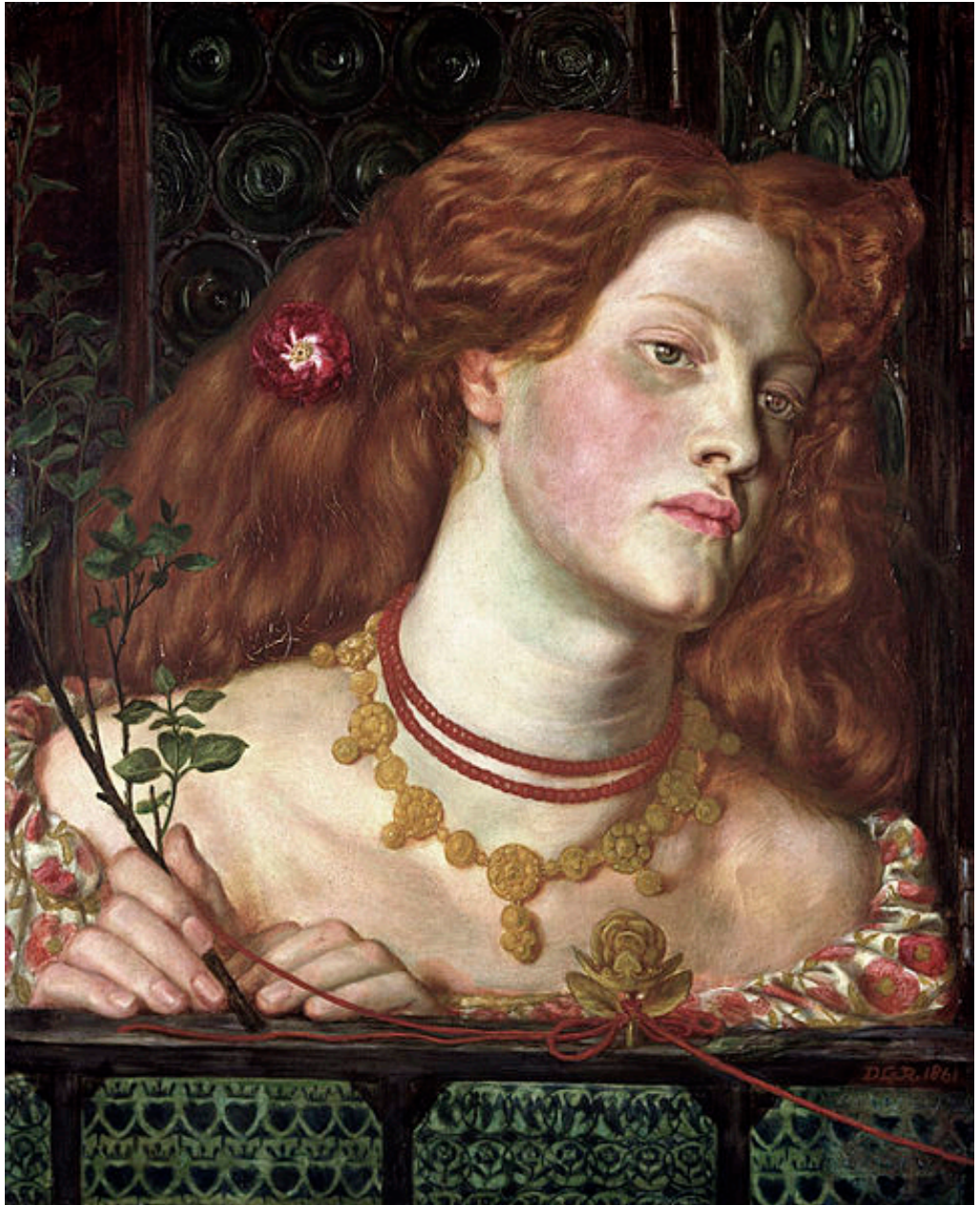


Figure 84
Dante Gabriel Rossetti
Fair Rosamund (1861)
Oil on canvas, 52.1 x 41.9 cm
National Museum of Wales, Cardiff.



Figure 85
Dante Gabriel Rossetti
Monna Rosa (1867)
Oil on canvas, 69 x 53 cm
Private collection.



Figure 86
Dante Gabriel Rossetti
Sibylla Palmifera (1870)
Oil on canvas, 98.4 x 84.5 cm
Lady Lever Art Gallery, Port Sunlight.



Figure 87

Dante Gabriel Rossetti

Dante's Dream at the Time of the Death of Beatrice (1869-71)

Oil on canvas, 216 x 312.4 cm

Walker Art Gallery, Liverpool.



Figure 88
Sandro Botticelli
Mars & Venus (ca. 1483)
Tempera, 69 x 173 cm
National Gallery, London.



Figure 89
Sandro Botticelli
La Primavera (1477 - 82)
Tempera on panel, 203 x 314 cm
Uffizi Gallery, Florence



Figure 90

Titian

Venus Blindfolding Cupid (ca. 1565)

Oil on canvas, 118 x 185 cm

Galleria Borghese, Rome.



Figure 91

Titian

The Rape of Europa (ca. 1559)

Oil on canvas, 178 x 205 cm

Isabella Stewart Gardner Museum, Boston, Mass.



Figure 92

Dante Gabriel Rossetti

Mary Nazarene (1857)

Watercolour on paper, Support: 34.3 x 19.7 cm; Frame: 55.4 x 40.7 x 4 cm
Tate.



Figure 93
Dante Gabriel Rossetti
The Damsel of the Sanct Grael (1857)
Watercolour on paper, Support: 34.9 x 12.7 cm
Tate.



Figure 94
Dante Gabriel Rossetti
The Damsel of the Sanct Grael (1874)
Oil, 92.1 x 57.8 cm
Andrew Lloyd Webber collection.



Figure 95
Gentile da Fabriano,
Mary Enthroned with the Child, Saints and a Donor (1395)
Poplar wood, 131 x 113 cm,
Gemäldegalerie, Berlin.



Figure 96
Dante Gabriel Rossetti/Ford Madox Brown
Beata Beatrix (1877, completed after 1882)
Oil on canvas, 86.4 x 68.2 cm
Birmingham Museum and Art Gallery.



Figure 97
Dante Gabriel Rossetti,
Astarte Syriaca (1877)
Oil on canvas, 182.9 x 106.7 cm,
Manchester City Art Gallery.