

**The Matter of Nobility:  
Materially Constituting the Arenberg Family Body in the  
Habsburg Netherlands 1520-1620**

**Rebekah Helen Lee**

Two Volumes

Volume Two: Images.

PhD.

University of York.

History of Art.

September 2018.



**Figure 1.** Frans Pourbus the Younger, *Portrait of the Arenberg Family*, c.1593-1597, Oil on Canvas, 223 x 227cm, Arenberg Castle, KU Leuven, Heverlee.



**Figure 2.** Map showing Arenberg property in the Netherlands. Red markers indicate property acquired between 1500-1700. Yellow marker indicates the location of the new Arenberg family seat in Enghien (Edingen). Map adapted from Jan Rogiers, Mark Derez, Marc Nelissen, Jean-Pierre Tytgat and Anne Verbrugge, ed., *Arenberg in de Lage Landen: Een hoogadellijk huis in Vlaanderen en Nederland* (Leuven: University of Leuven, 2002).



**Figure 3a.** 'Expo Adellijk Wonen' Promotional image from M-Leuven website.  
<https://www.arenbergleuven.be/nl/expo-adellijk-wonen>.





**Figure 3b.** 'Openingsweekend' Promotional image from M-Leuven website. <https://www.arenbergleuven.be/nl/openingsfeest>.



**Figure 4.** Drawing of weaver in “Recueil de dessins ou cartons, avec devises, destinés à servir de modèles pour tapisseries ou pour peintures sur verre,” Département des Manuscrits, Français 24461, Folio 136r. Bibliothèque Nationale de France, Paris.



**Figure 5.** Tapestry design in “Recueil de dessins ou cartons, avec devises, destinés à servir de modèles pour tapisseries ou pour peintures sur verre,” Département des Manuscrits, Français 24461, Folio 8v and 9r. Bibliothèque Nationale de France, Paris.





**Figure 6.** From the workshop of Pieter Van Aelst, *Honour*, c.1530, Wool and Silk 6-7 warp threads per cm, 450 x 803cm, Metropolitan Museum, New York.





**Figure 7.** Detail of Figure 6. From the workshop of Pieter Van Aelst, *Honour*, c.1530, Wool and Silk 6-7 warp threads per cm, 450 x 803cm, Metropolitan Museum, New York.





**Figure 8.** Detail of Figure 6. From the workshop of Pieter Van Aelst, *Honour*, c.1530, Wool and Silk 6-7 warp threads per cm, 450 x 803cm, Metropolitan Museum, New York.





**Figure 9.** From the workshop of Pieter Van Aelst, *Fortuna*, c.1520-1525, Wool, Silk and Silver and Gilt wrapped thread, 490 x 860cm, Palacio Real de la Granja de San Ildefonso, Segovia.





**Figure 10.** From the workshop of Pieter Van Aelst, *Prudentia*, c.1530, Wool and Silk 6-7 warp threads per cm, 567.1 x 466.9cm, Art Institute, Chicago.





**Figure 11.** From the workshop of Pieter Van Aelst, *Virtus*, c.1530, Wool and Silk 6-7 warp threads per cm, 460 x 870cm, Burrell Collection, Glasgow.





**Figure 12.** From the workshop of Pieter Van Aelst, *Fides*, c.1530, Wool and Silk 6-7 warp threads per cm, 460 x 700 cm, Burrell Collection, Glasgow.





**Figure 13.** From the workshop of Pieter Van Aelst, *Fama*, c.1520-1525, Wool, Silk and Silver and Gilt wrapped thread, 505 x 1030cm, Palacio Real de la Granja de San Ildefonso, Segovia.





**Figure 14.** From the workshop of Pieter Van Aelst, *Justitia*, c.1530, Wool and Silk 6-7 warp threads per cm, 511.8 x 454.03 cm, Art Institute, Chicago.





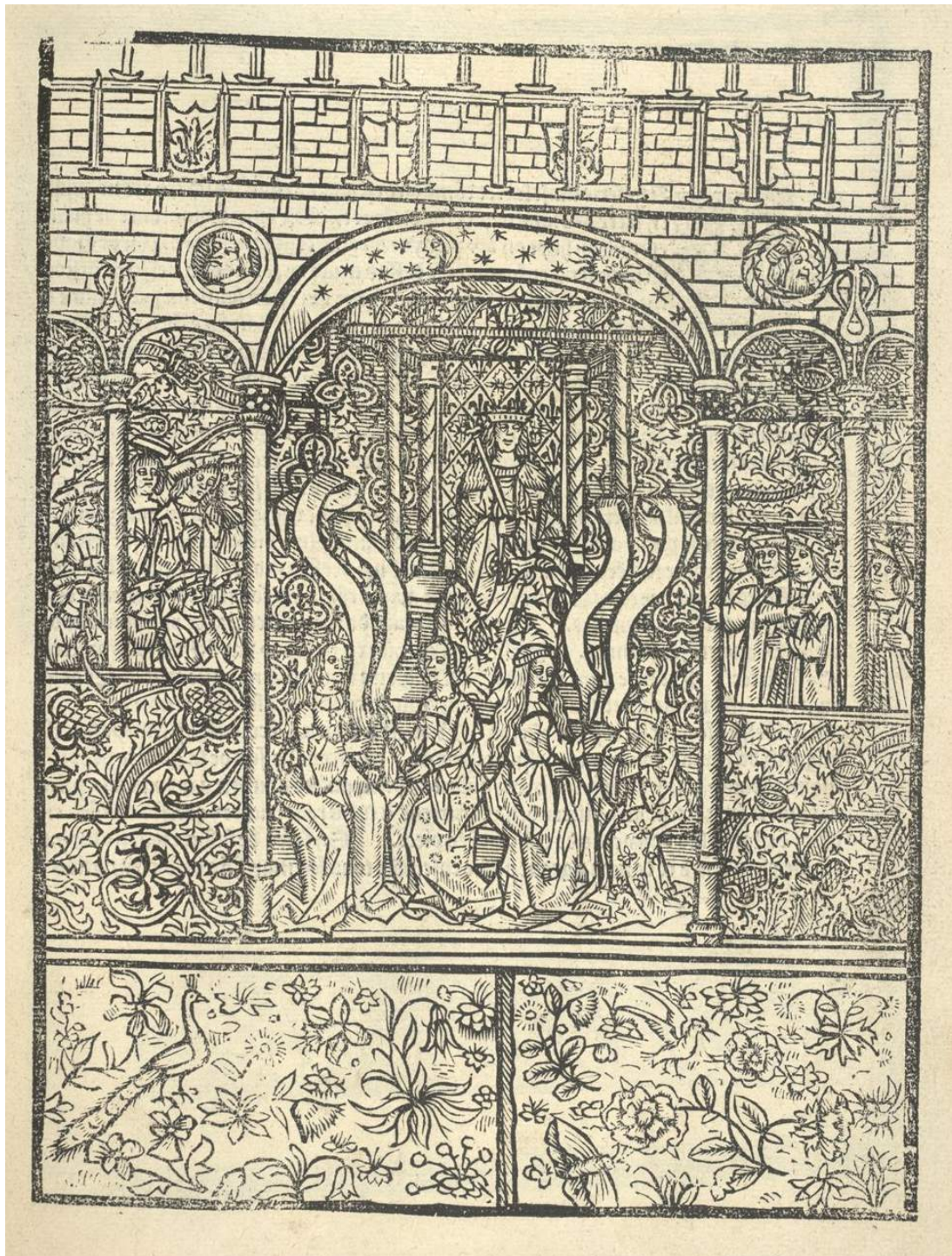
**Figure 15.** Etching depicting Charles III on his deathbed in Claude de Ruelle, Jean de la Hière, Freidrich Brentel, Mattäus Merian and Léonard Périn, *Dix grandes Tables contenant les pourtraictz des ceremonies, honneurs et pompe funèbres, faitz au Corps de feu Serenissime Prince Charles 3 du Nom 1611*, 9. Bibliothèque Nationale de France, Paris.





**Figure 16.** Etching depicting Charles III lying in state in Claude de Ruelle, Jean de la Hière, Freidrich Brentel, Mattäus Merian and Léonard Périn, *Dix grandes Tables contenant les pourtraictz des ceremonies, honneurs et pompe funèbres, faitz au Corps de feu Serenissime Prince Charles 3 du Nom 1611*, 10. Bibliothèque Nationale de France, Paris.





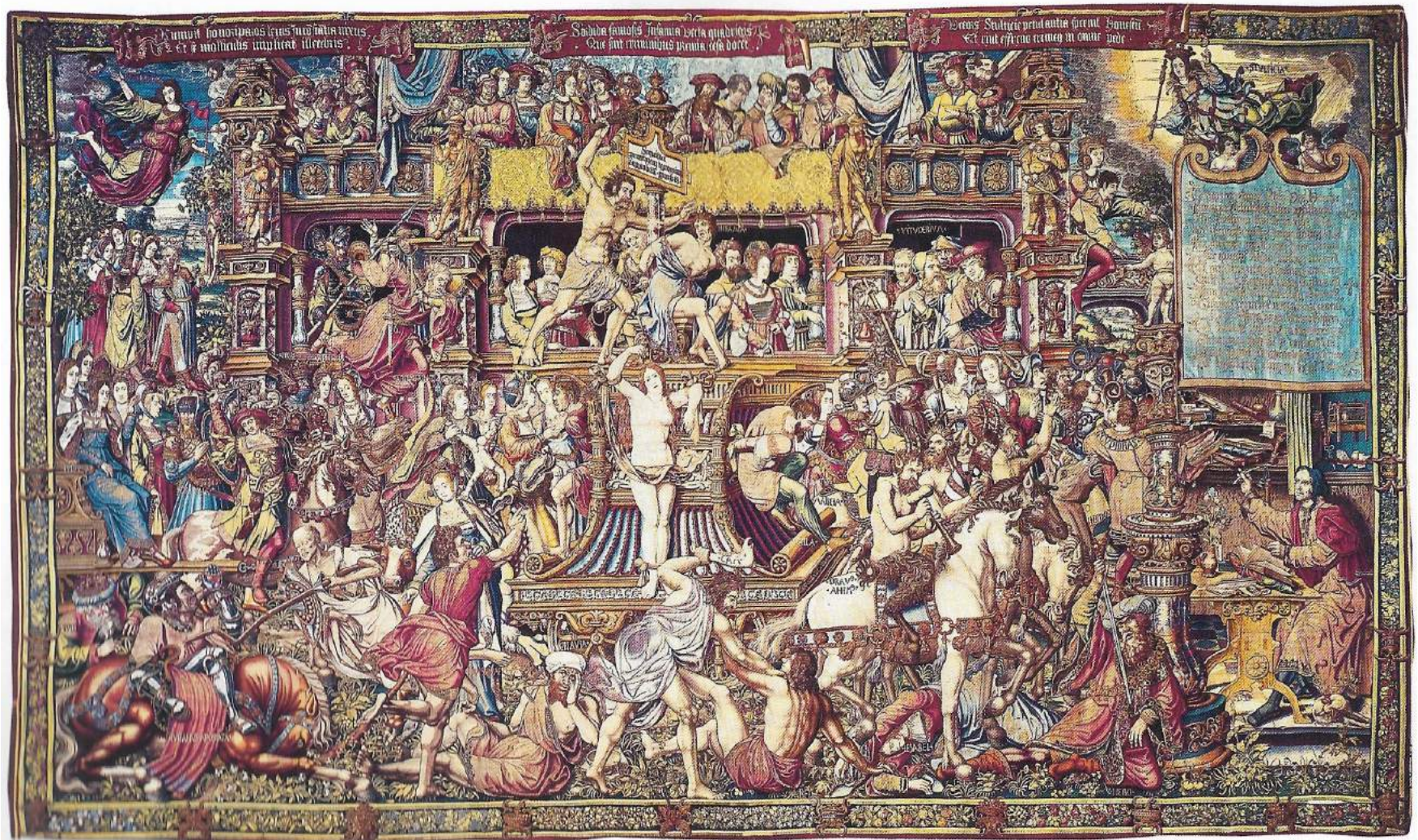
**Figure 17.** Engraving in Remy du Puys, *La tryumphante et solemnelle entree faicte sur le nouuel et ioyeux aduenement de treshault trespuissant et tresexcellant prince monsieur Charles prince des Hespaignes archiduc daustrice duc de Bourgongne conte de Flandres.* [etc] *En sa ville de Bruges*, 55. The British Library, London.





**Figure 18.** Ambrogio Lorenzetti, *Allegory of Good and Bad Government*, c.1338-40, Frescoes in the Sala dei Nove, Palazzo Pubblico, Siena.





**Figure 19.** From the workshop of Pieter Van Aelst, *Infamia*, c.1520-1525, Wool, Silk and Silver and Gilt wrapped thread, 495 x 850cm, Palacio Real de la Granja de San Ildefonso, Segovia.





**Figure 20.** Detail of Figure 19. From the workshop of Pieter Van Aelst, *Infamia*, c.1520-1525, Wool, Silk and Silver and Gilt wrapped thread, 495 x 850cm, Palacio Real de la Granja de San Ildefonso, Segovia.



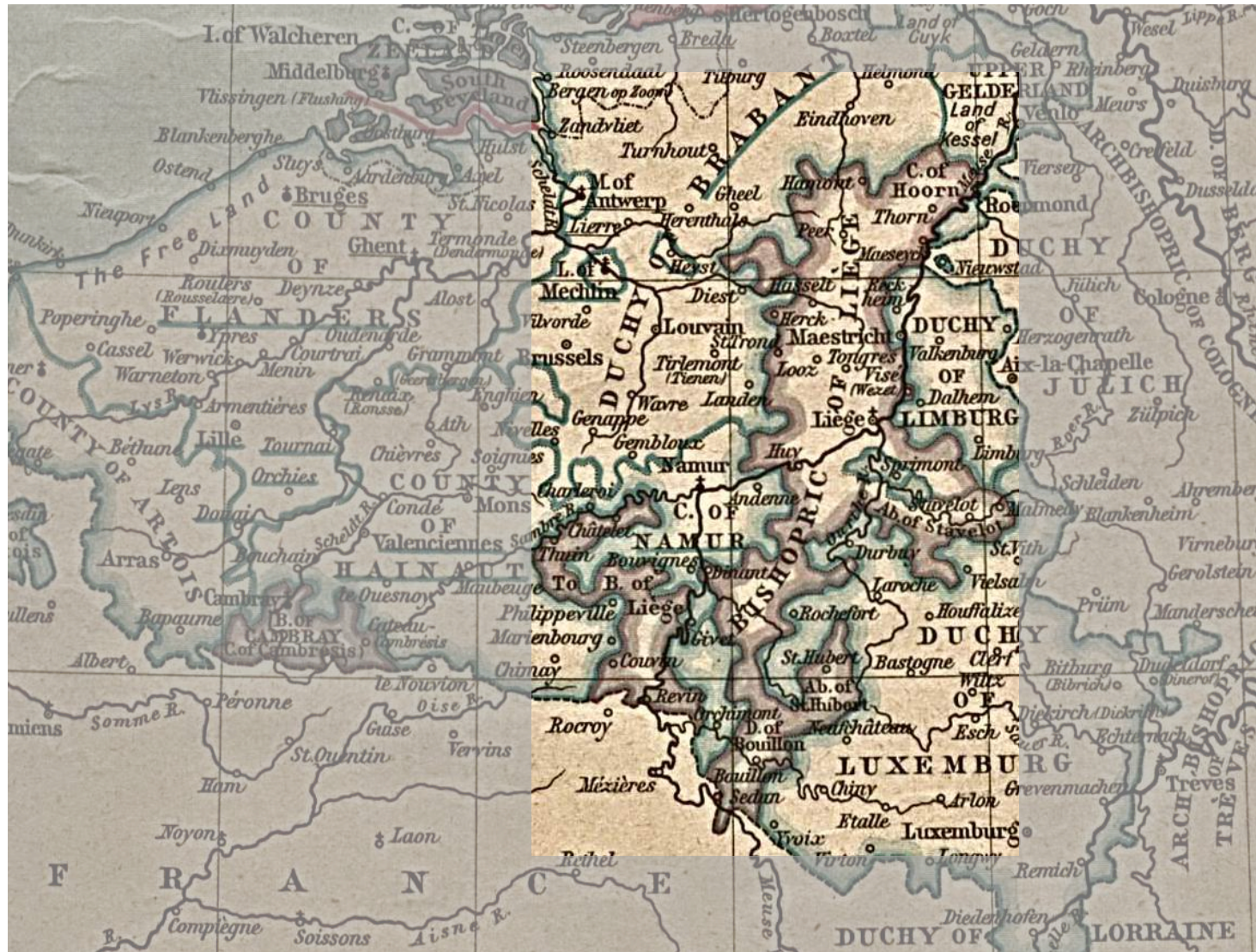
**Figure 21.** Hans Holbein, *Portrait of Erasmus*, 1523, Oil on Panel, 73.6 x 51.4cm, National Gallery, London.





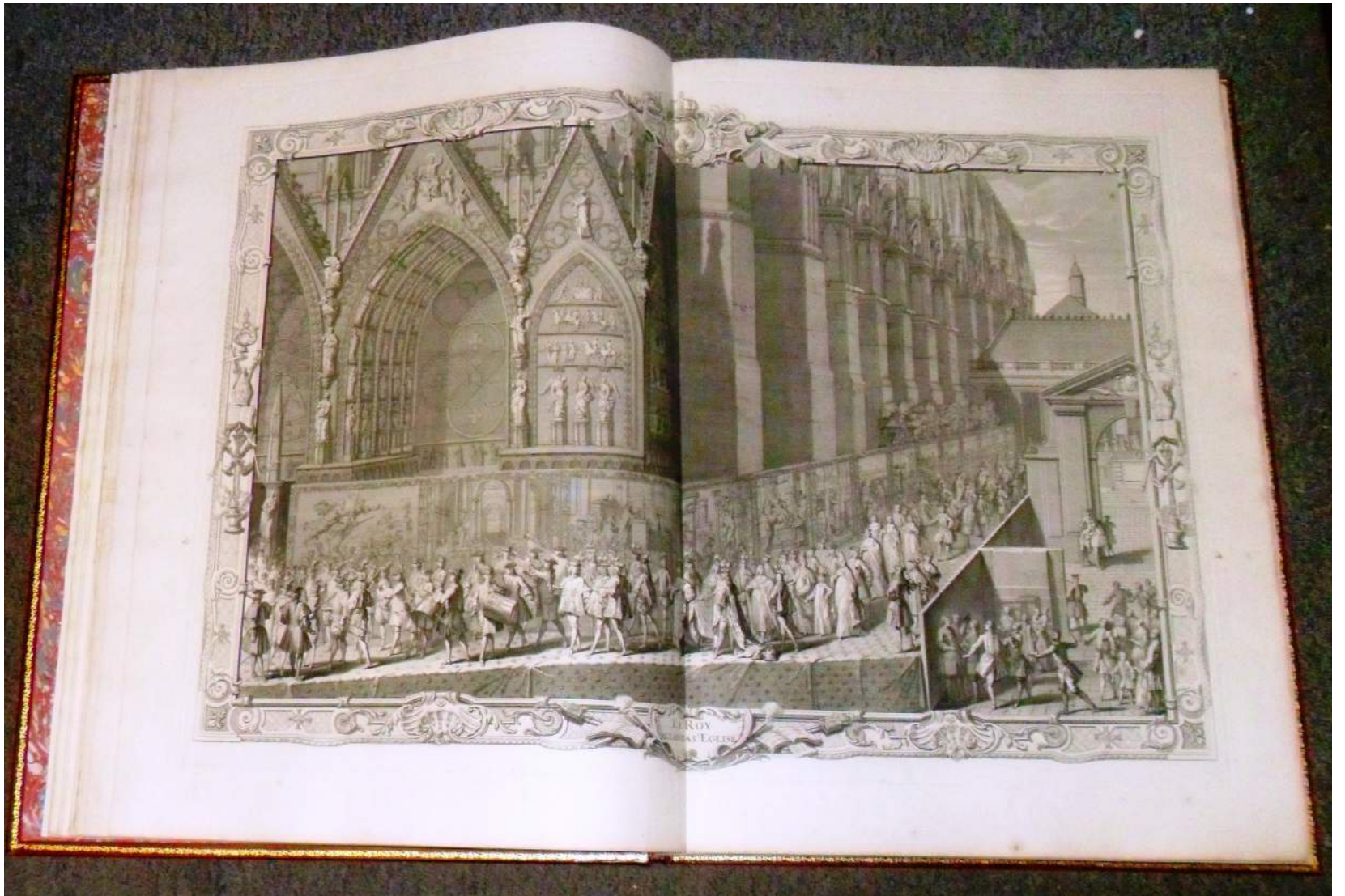
**Figure 22.** Hans Holbein, *Portrait of Georg Gisze*, 1532, Oil on Oak, 86.2 x 97.5cm, Gemäldegalerie, Berlin.





**Figure 23.** Detail of map of “Netherlands 1559-1608” depicting the Bishopric of Liège along the river Meuse from From *The Historical Atlas* by William R. Shepherd, (New York, 1923).





**Figure 24.** Etching in *Le Sacre de Louis XV, Roy de France & de Navarre, dans l'Eglise de Reims, Le Dimanche 25 Octobre, 1722* (Paris, 1731).





**Figure 25.** “Domine labia mea aperis,” Hours of the Virgin in the ‘Hours of René of Anjou,’ MS. Egerton 1070, folio 16r, British Library, London.





**Figure 26.** Daniel Tomberg and Albert Merinck, Stained glass window depicting the Annunciation of the Birth of Christ, 1559 and 1655, St John's Church, Gouda.





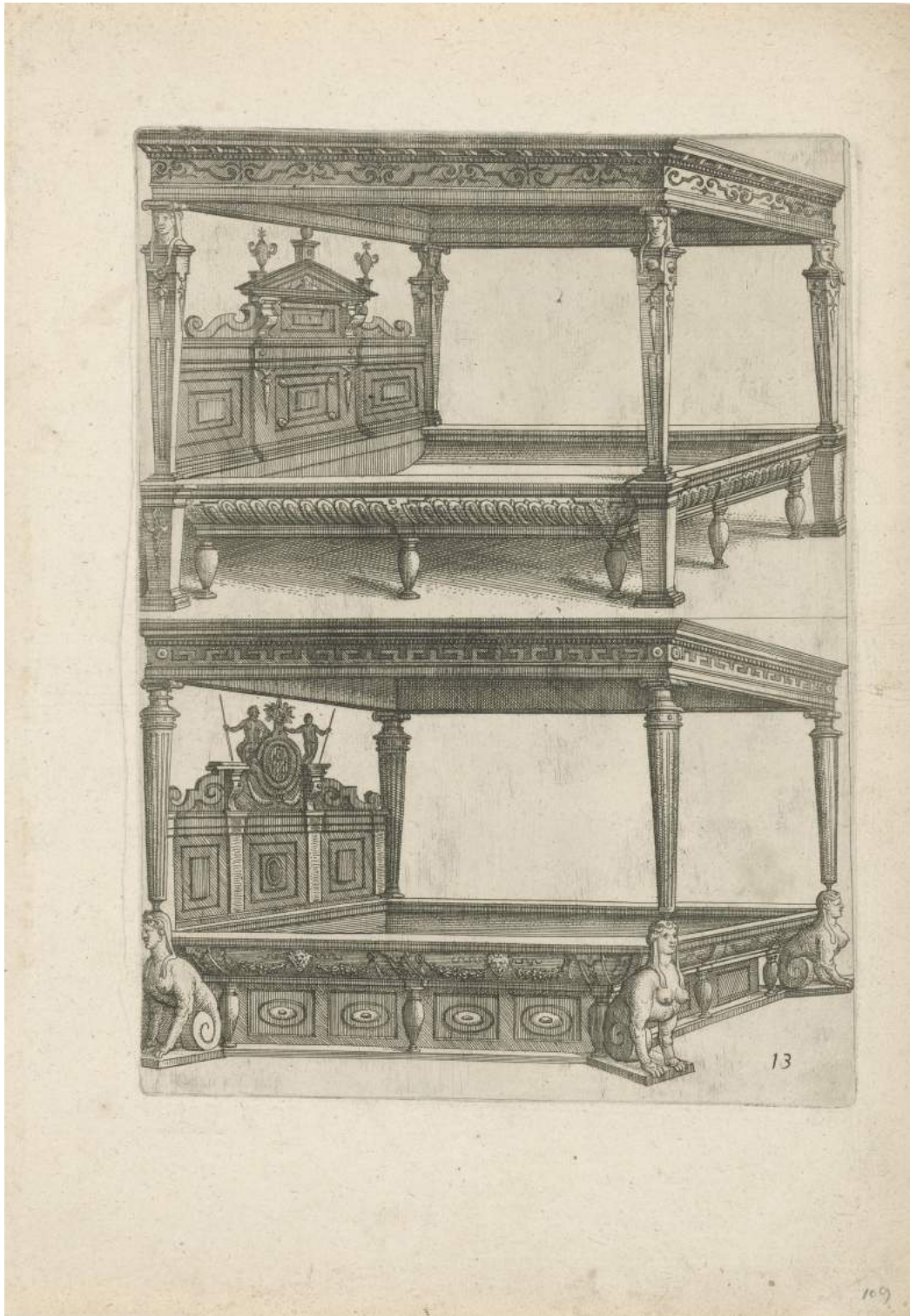
**Figure 27.** Detail of Jan Van Eyck, *The Annunciation*, c.1434/1436, Oil on Canvas transferred from Panel, 90.2 x 34.1 cm, National Gallery, Washington.





**Figure 28.** Dirck Crabeth, Stained glass window depicting Judith and Holofernes, 1571, St John's Church, Gouda.





**Figure 29.** Vredeman de Vries, Furniture Plate, c.1583, Etching on paper, 25.4 x 19.2cm, Rijksmuseum, Amsterdam.





**Figure 30.** Philip Galle after Maarten van Heemskerck, *Judith Slaying Holofernes*, Plate 6 from *The Story of Judith and Holofernes* series, 1564, Engraving on paper, 20.2 x 24.8cm, Art Institute, Chicago.





**Figure 31.** Detail of Figure 28. Dirck Crabeth, Stained glass window depicting Judith and Holofernes, 1571, St John's Church, Gouda.





**Figure 32.** Detail of Figure 28. Dirck Crabeth, Stained glass window depicting Judith and Holofernes, 1571, St John's Church, Gouda.





**Figure 33.** Detail of Figure 28. Dirck Crabeth, Stained glass window depicting Judith and Holofernes, 1571, St John's Church, Gouda.





**Figure 34.** Lucas de Heere, *Roman General* page taken from *Théâtre de tous les peuples et nations de la terre avec leurs habits, et ornements diuers* [*Theatre of all the peoples and nations of the earth with their habits, and diverse ornaments*], Sixteenth Century, Watercolour on Paper, Universiteits Bibliotheek, Gent.



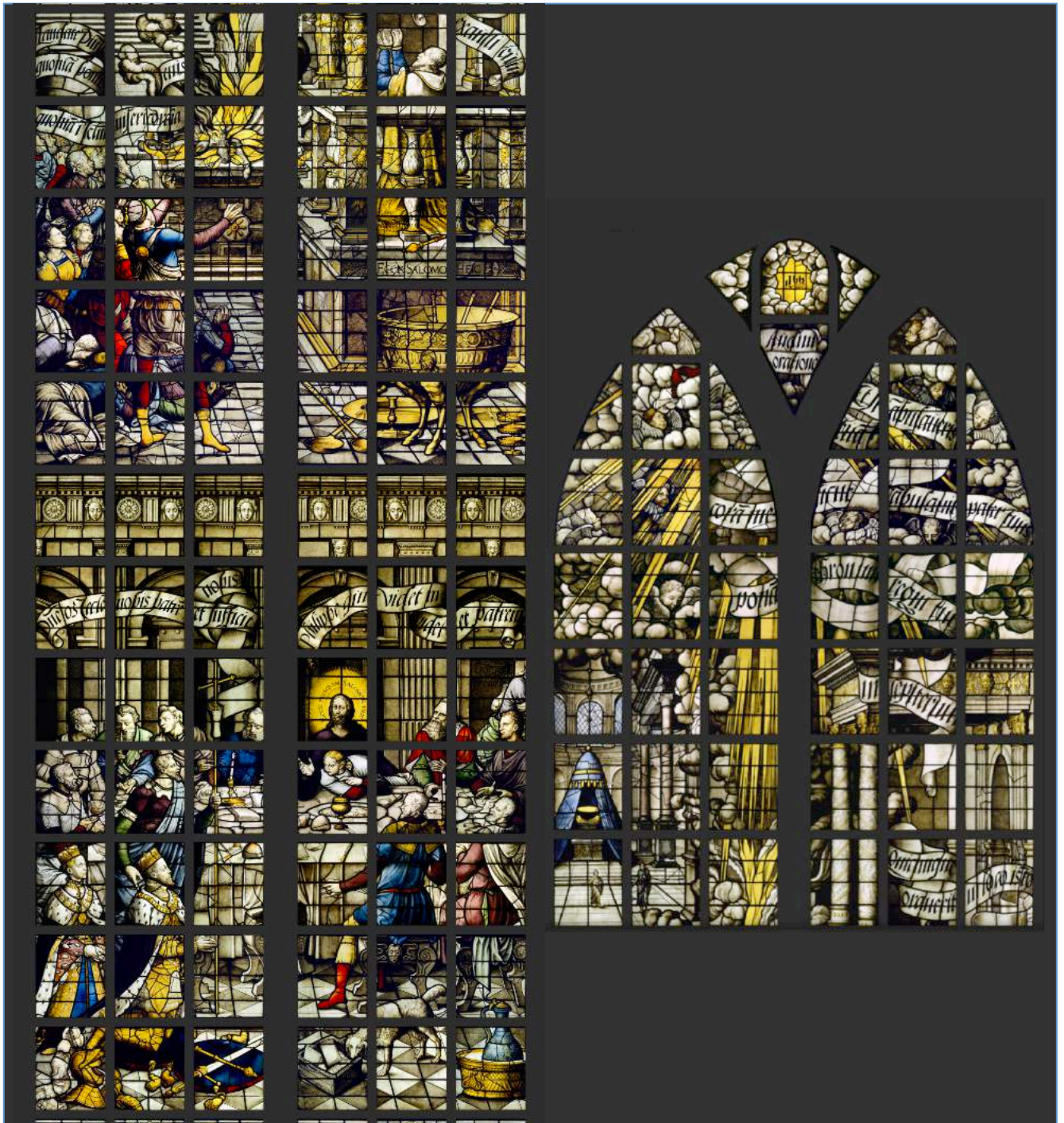


**Figure 35.** Lucas Cranach the Elder, *Judith with the Head of Holofernes*, c.1530, Oil on Linden, 89.5 x 61.9cm, The Metropolitan Museum of Art, New York.

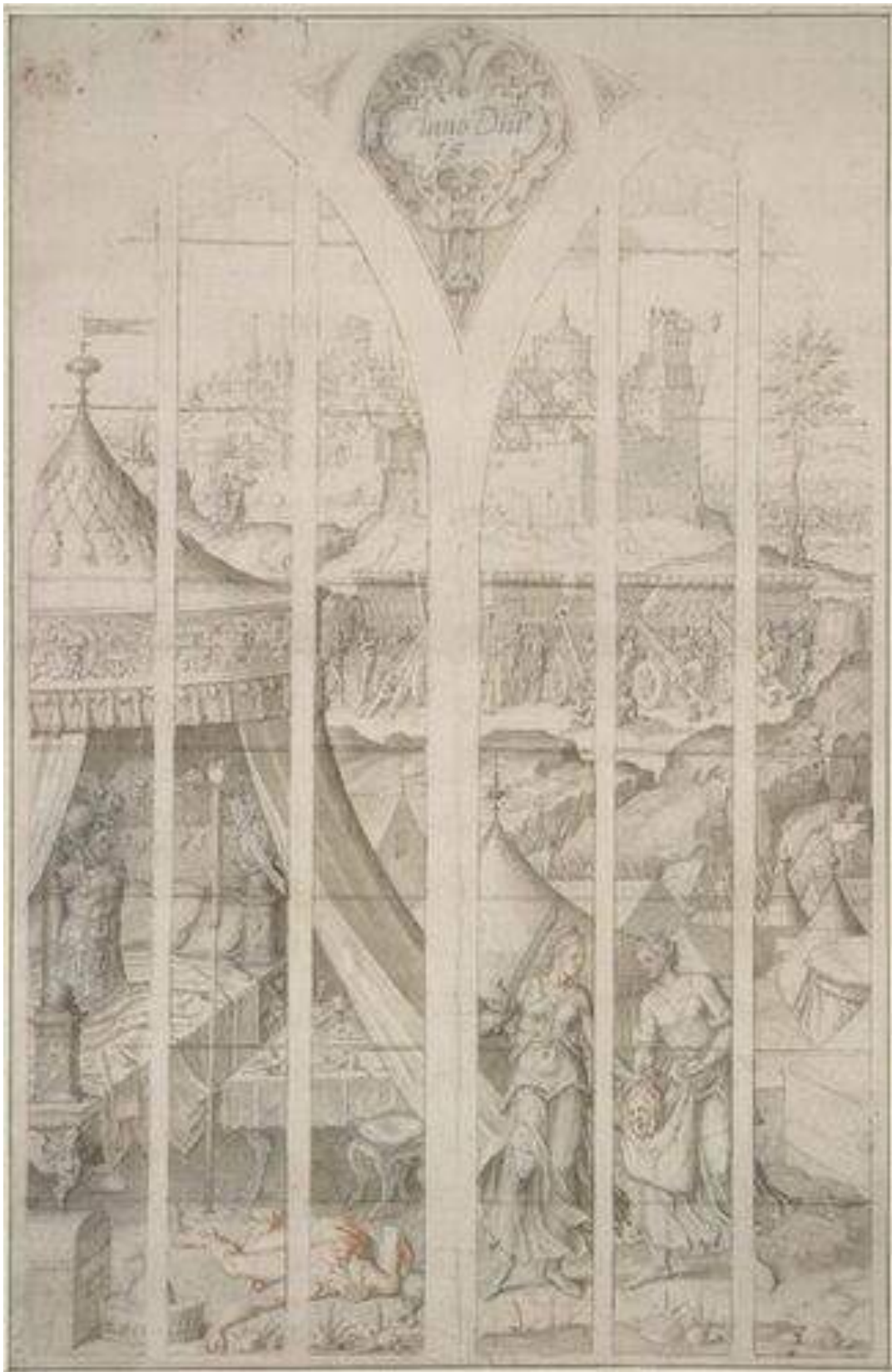


**Figure 36.** Pieter Tanjé, *Views of the St John's Church at Gouda: Queen of Sheba*, c.1732, Etching on paper, 63 x 31.3cm, British Museum, London.





**Figure 37.** Dirck Crabeth, Stained glass window or 'The King's Window,' depicting the Last Supper, 1557, St John's Church, Gouda.



**Figure 38.** Dirck Crabeth, *Vidimus* for stained glass window depicting the story of Judith and Holofernes, 1555-1571, Drawing on Paper, 50.3 x 33.2cm, Albertina, Vienna.

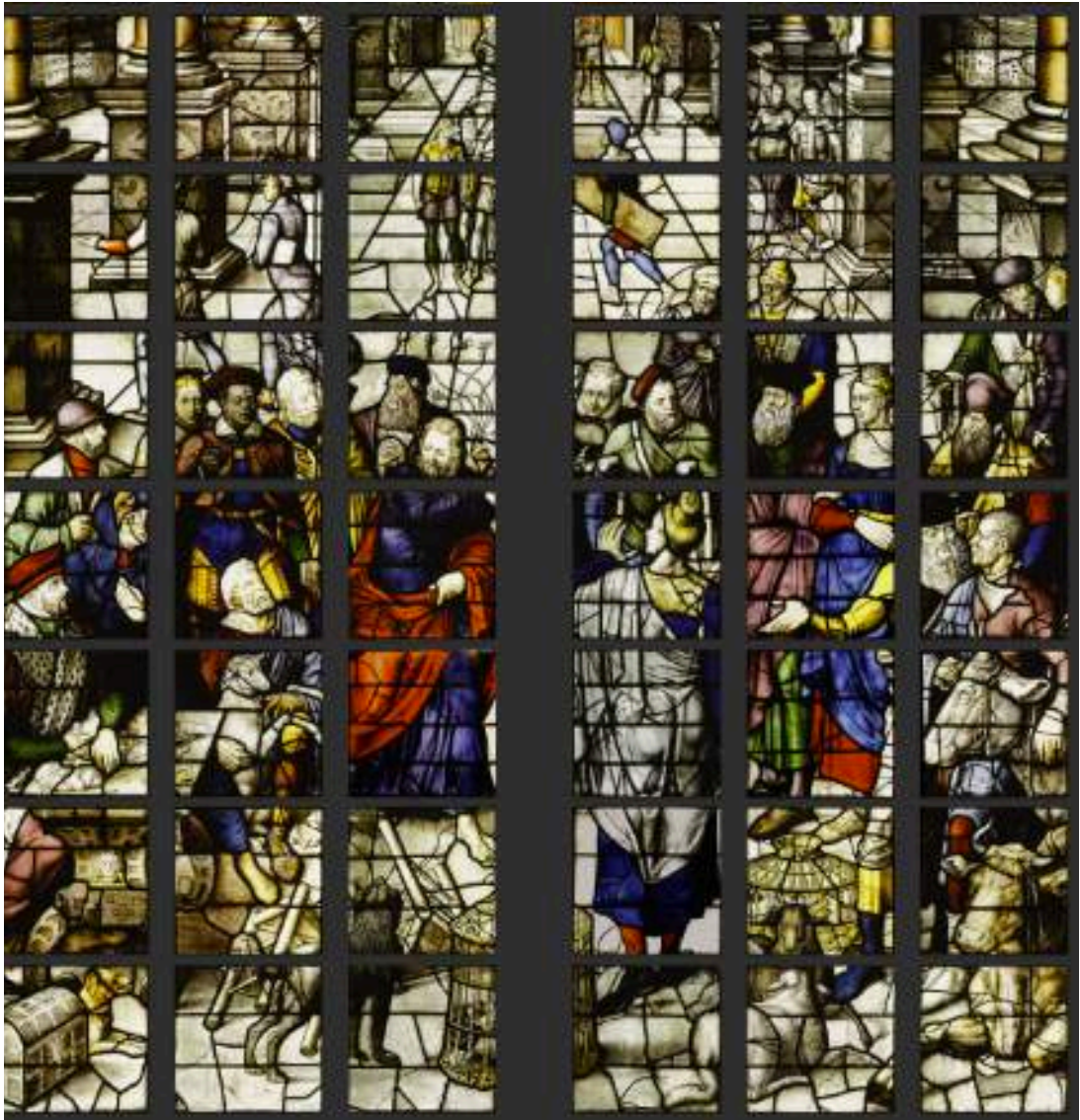




**Figure 39.** Dirck Crabeth, Cartoon for the window depicting the story of Judith and Holofernes, Detail: Soldiers besieging city, c. 1570, Museum Gouda, Gouda.



**Figure 40.** Detail of Figure 28. Dirck Crabeth, Stained glass window depicting Judith and Holofernes, 1571, St John's Church, Gouda.

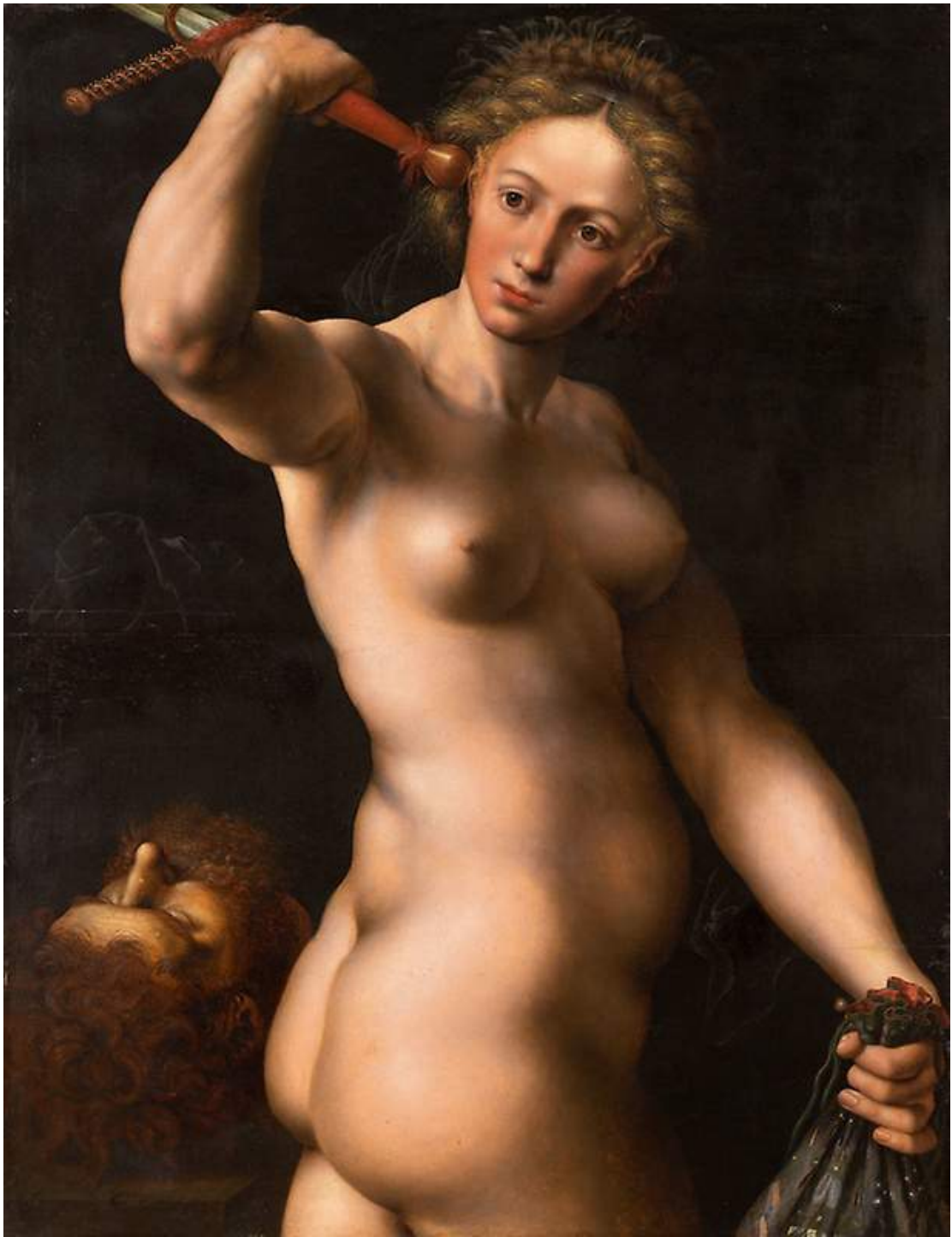


**Figure 41.** Dirck Crabeth, Central panels of stained glass window depicting The Purification of the Temple, 1561, St John's Church, Gouda.



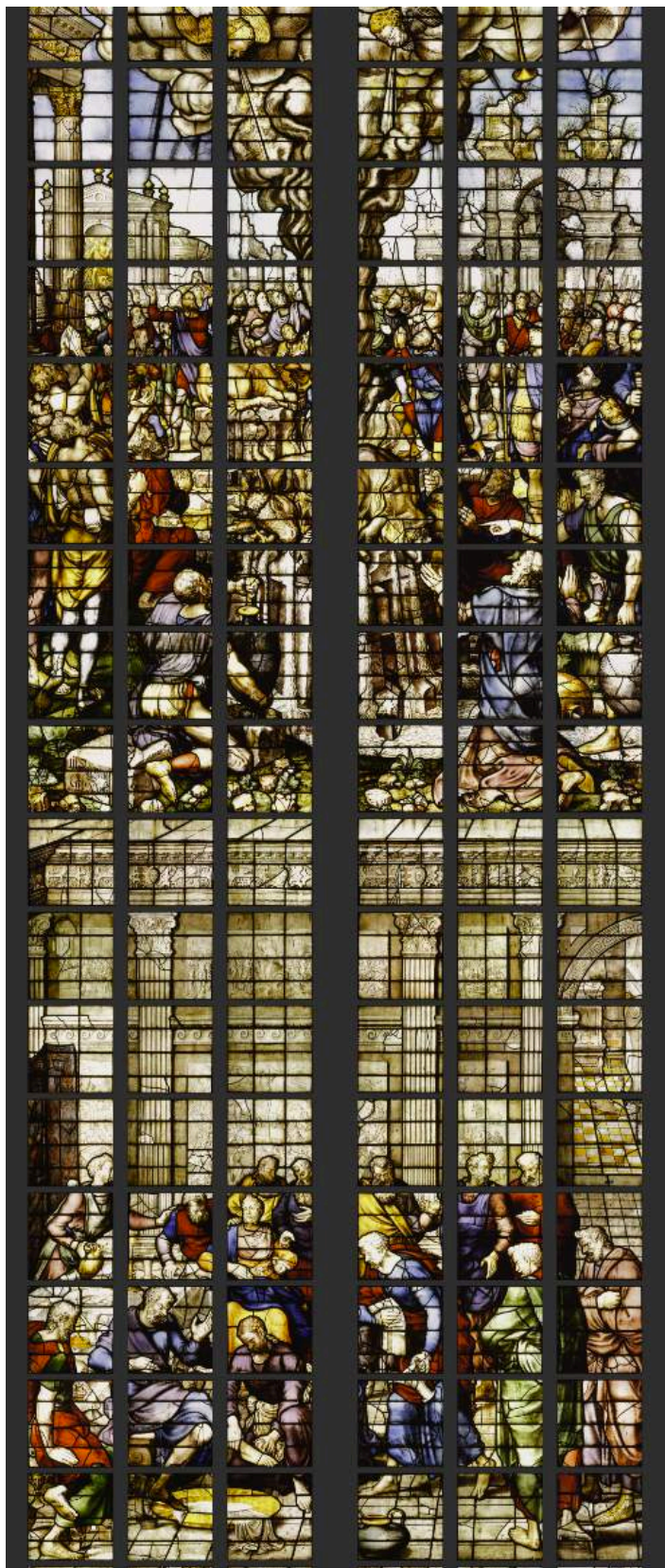


**Figure 42 and 43.** Detail of Figure 28. Dirck Crabeth, Stained glass window depicting Judith and Holofernes, 1571, St John's Church, Gouda.



**Figure 44.** Jan Sanders van Hemessen, *Judith*, c.1540, Oil on Panel, 99.1 x 77.2 cm, Art Institute, Chicago.





**Figure 45.** Wouter Crabeth, Window depicting Elijah's Sacrifice, Christ washing the feet of the Disciples and Margaret of Parma, 1562, St John's Church, Gouda.



**Figure 46.** Wouter Crabeth, Design for window depicting the Supper at Bethany, Sixteenth Century, Pen and wash, 40.8 x 14.4cm, Beaux-Arts de Paris, l'école nationale supérieure, Paris.





**Figure 47.** Detail of Figure 28. Dirck Crabeth, Stained glass window depicting Judith and Holofernes, 1571, St John's Church, Gouda.

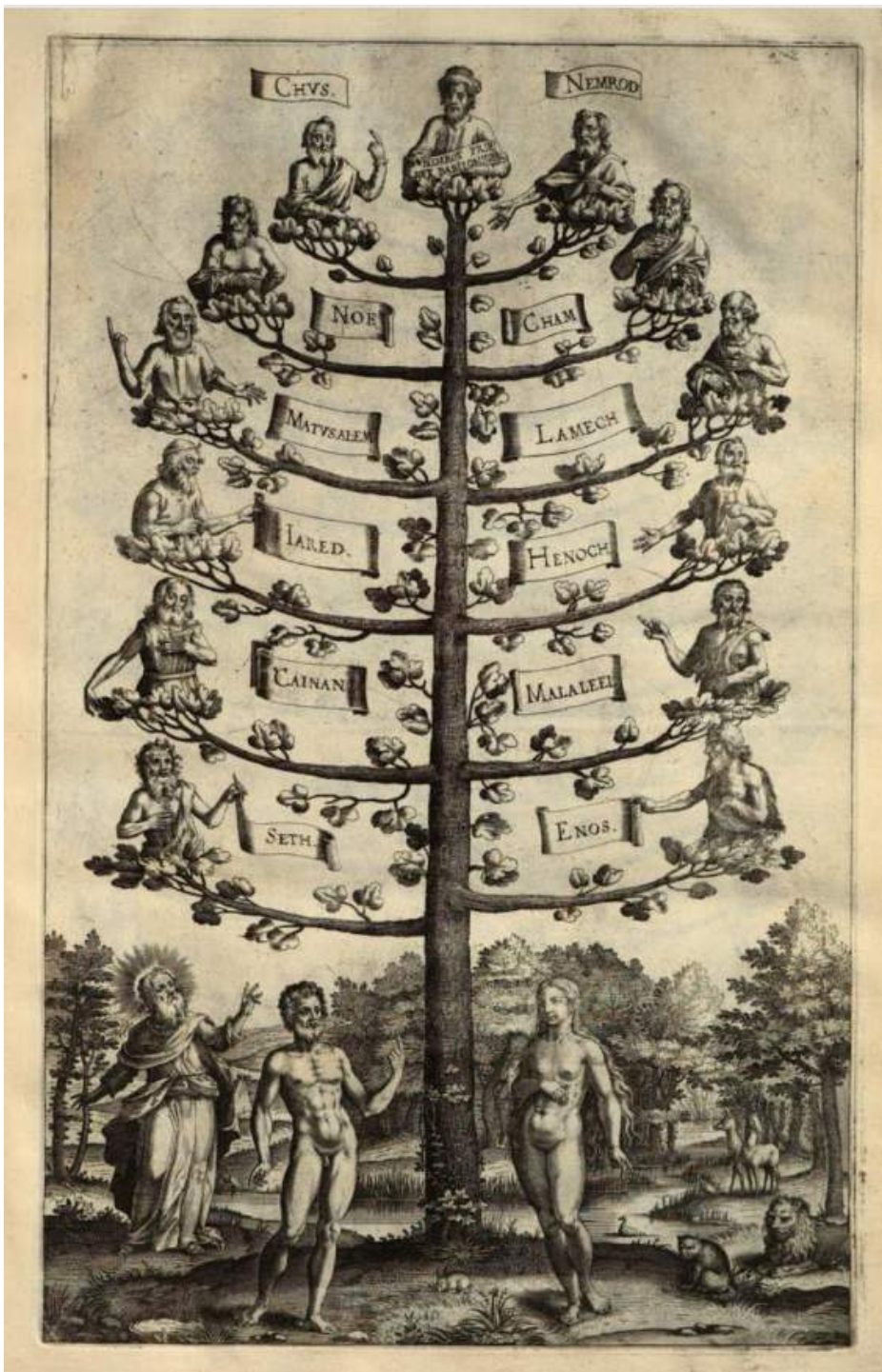


**Figure 48.** Artist Unknown, Damaged panel depicting St Catherine and Margaret de la Marck, Second half of the Sixteenth Century, Oil on Panel, Arenberg Archives, Enghien.





**Figure 49.** Unknown artist, *Portrait of Duchess Anne de Croy*, c.1600, Watercolour on Parchment, 19 x 26.7cm, Iconographie ref. honour 49, H49, v6, Arenberg Archive, Enghien.



**Figure 50.** Engraving showing the Croy family tree beginning with Adam and Eve in Jacob Bie, *Livre contenant la genealogie et descente de ceux de la Maison de Croy tant de la ligne principale estant chef dv nom et armes d'Icelle que des branches et ligne collaterale de ladicta maison* (Antwerp, 1612).



<p>1v. Messire Philippe de Croy, Ducq' Arshot. Pere a Madame.</p>	<p>2r. Dame femme de Hallewin Duchesse d'Arshot. Mere a Madame.</p>
<p>2v. Messire Charles de Croy Ducq d'Arshot. Frère a Madame. (Figure 1)</p>	<p>3r. Dame Marie de Brimeux Duchesse d'Arshot. Belle soeur a Madame. (Figure 2)</p>
<p>3v. Messire Pierre de Henrin Comte de Boussu. Beau frère a Madame.</p>	<p>4r. Dame Marguerite de Croy Contesse de Boussu. Soeur a Madame.</p>
<p>4v. Messire [Charles] Philippe de Croy Marquis de Hauvé. Demy oncle a Madame</p>	<p>5r. Dame Diane du Mont Martin Marquis de Hauvé. Belle tante a Madame.</p>
<p>5v. Messire Jean de Ligne Prinse Comte d'Arenberghe. Beau pere a Madame. (Figure 3)</p>	<p>6r. Dame Marguerite de la Marck Princesse Contesse d'Arenberghe. Belle mere a Madame. (Figure 4)</p>
<p>6v. Messire Charles Prinse Comte d'Arenberg Duc d'Arshot. (Figure 5)</p>	<p>7r. Dame Anne de Croy Duchesse d'Arshot Princesse Contesse d'Arenberghe. (Figure 6)</p>
<p>7v. Messire Robert de Ligne Prinse de Barbanson. Beau frère a Madame. (Figure 7)</p>	<p>8r. Dame Claude Rintgrave Princesse de Barbanson. Belle soeur a Madame. (Figure 8)</p>
<p>8v. Messire Philippe de Salain Comte de ducit lieu Beau frère a Madame. (Figure 9)</p>	<p>9r. Dame Marguerite de Ligne et d'Arenberghe. Comtesse de Lalain. Belle soeur a Madame. (Figure 10)</p>
<p>9v. Messire Saletin Comte d'Areberghe. Beau frère a Madame. (Figure 11)</p>	<p>10r. Dame Antoinette Guillemette de Ligne et d'Arenberghe Comtesse d'Arenbergh. Belle soeur a Madame. (Figure 12)</p>

**Figure 51.** Table displaying the arrangement of Arenberg Portrait Album.



**Figure 52.** After Anthonis Mor, *Philip II in Black and White*, 1554-1558, Oil on Panel, 98.2 x 22.4 cm, Royal Collection, London.





**Figure 53.** Matthäus Holtzward, *Emblematum Tyrocinia, sive picta poesis Latinogermanica* (Strassburg, 1581), emblem XXXV.

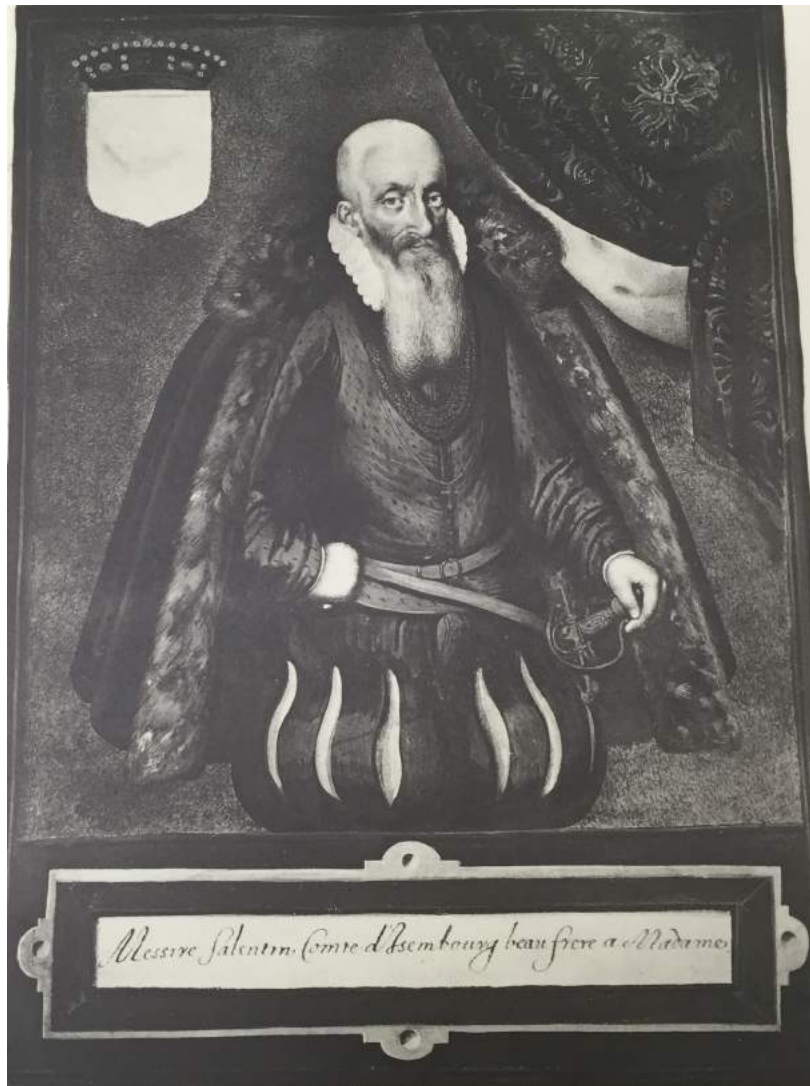


**Figure 54.** Unknown artist, *Portraits of Charles d'Arenberg and Anne de Croy*, c.1600, Watercolour on Parchment, 19 x 26.7cm, Iconographie ref. honour 49, H49, 6v and 7r, Arenberg Archive, Enghien.





**Figure 55.** Unknown artist, *Portraits of Philippe de Salain and Marguerite de Ligne*, c.1600, Watercolour on Parchment, 19 x 26.7cm, Iconographie ref. honour 49, H49, 8v and 9r, Arenberg Archive, Enghien. Images from Édouard Laloire, *Recueil Iconographique de la Maison d'Arenberg* (Brussels; Phototypie E. Thill, 1940).



**Figure 56.** Unknown artist, *Portraits of Saletin van Isenburg and Antoinette Guillemette de Ligne et d'Arenberghe*, c.1600, Watercolour on Parchment, 19 x 26.7cm, Iconographie ref. honour 49, H49, 9v and 10r, Arenberg Archive, Enghien. Images from Édouard Laloire, *Recueil Iconographique de la Maison d'Arenberg* (Brussels; Phototypie E. Thill, 1940).





**Figure 57.** Unknown artist, *Portraits of Robert de Ligne and Claude Rintgrave*, c.1600, Watercolour on Parchment, 19 x 26.7cm, Iconographie ref. honour 49, H49, 7v and 8r, Arenberg Archive, Enghien. Images from Édouard Laloire, *Recueil Iconographique de la Maison d'Arenberg* (Brussels; Phototypie E. Thill, 1940).



**Figure 58.** Unknown artist, *Portraits of Charles de Croy and Marie de Brimeu*, c.1600, Watercolour on Parchment, 19 x 26.7cm, Iconographie ref. honour 49, H49, 2v and 3r, Arenberg Archive, Enghien.





**Figure 59.** Unknown artist, *Portrait of Jean de Ligne and Countess Margaret de a Marck*, c.1600, Watercolour on Parchment, 19 x 26.7cm, Iconographie ref. honour 49, H49, 5v and 6r, Arenberg Archive, Enghien.



**Figure 60.** Plate 29 of *Dei veri ritratti degl'habiti di tutte le parti del mondo intagliati in rame per opra di Bartolomeo Grassi*, 1585, Engraving on Paper, Rijksmuseum, Amsterdam.





**Figure 61.** François Clouet, Drawing of Margaret de la Marck, c.1570, Drawing on paper, 31.3 x 22.8cm, British Museum, London.



**Figure 62.** Frans Pourbus the Younger, *Marie de Huelstre*, 1591, Oil on Panel, 101.5 x 72.8cm, Private Collection, Belgium.





**Figure 63.** Gortzius Geldorp, *Portrait of Hortensia del Prado, wife of Jean Fourmenois*. 1596, Oil on Panel, 96 x 71cm, Rijksmuseum, Amsterdam.





**Figure 64.** Frans Pourbus the Younger, *Portrait of Isabella Clara Eugenia, Archduchess of Austria*, c.1598-1600, Oil on canvas, 134.9 x 98.2 cm, Gardner Museum, Boston.





**Figure 65.** Detail of Figure 1. Frans Pourbus the Younger, *Portrait of the Arenberg Family*, c.1593-1597, Oil on Canvas, 223 x 227cm, Arenberg Castle, KU Leuven, Heverlee.



**Figure 66.** Hans Mielich, Gold Pendant contained within the 'Jewel Book of the Duchess Anna of Bavaria,' 1552-1555, Vellum and paper, 20.5 x 15.4 cm, BSB Cod. Icon 429. Royal Library, Munich.



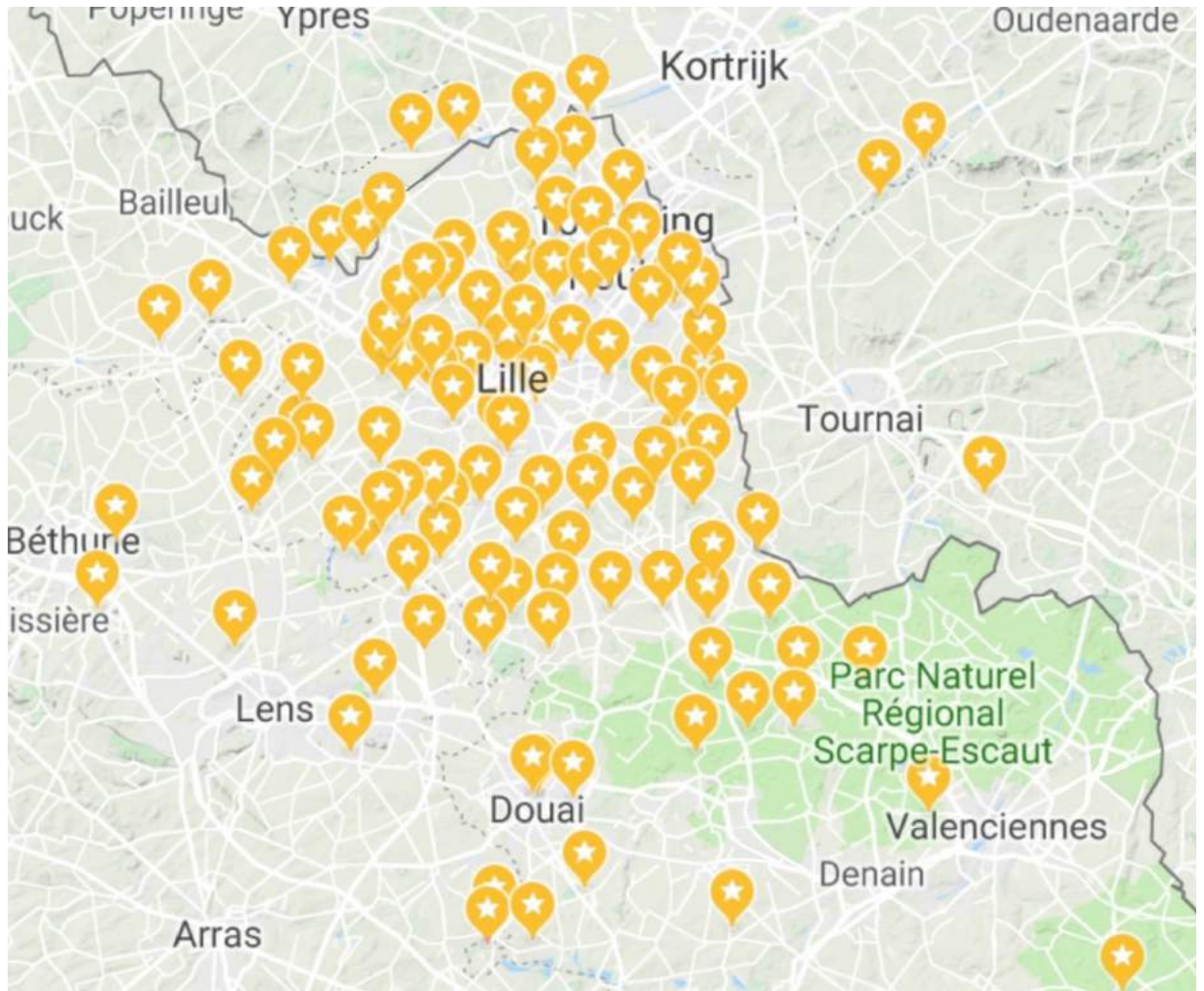


**Figure 67.** Sotheby's Lot Record: 117 "Croy, Charles III, Duc de. Early seventeenth-century french manuscript, made for Charles, Duc de Croy, containing five coloured views and maps, signed and annotated by the Duke ("deCroy") and dated by him 30 April 1606." Watercolour on parchment.



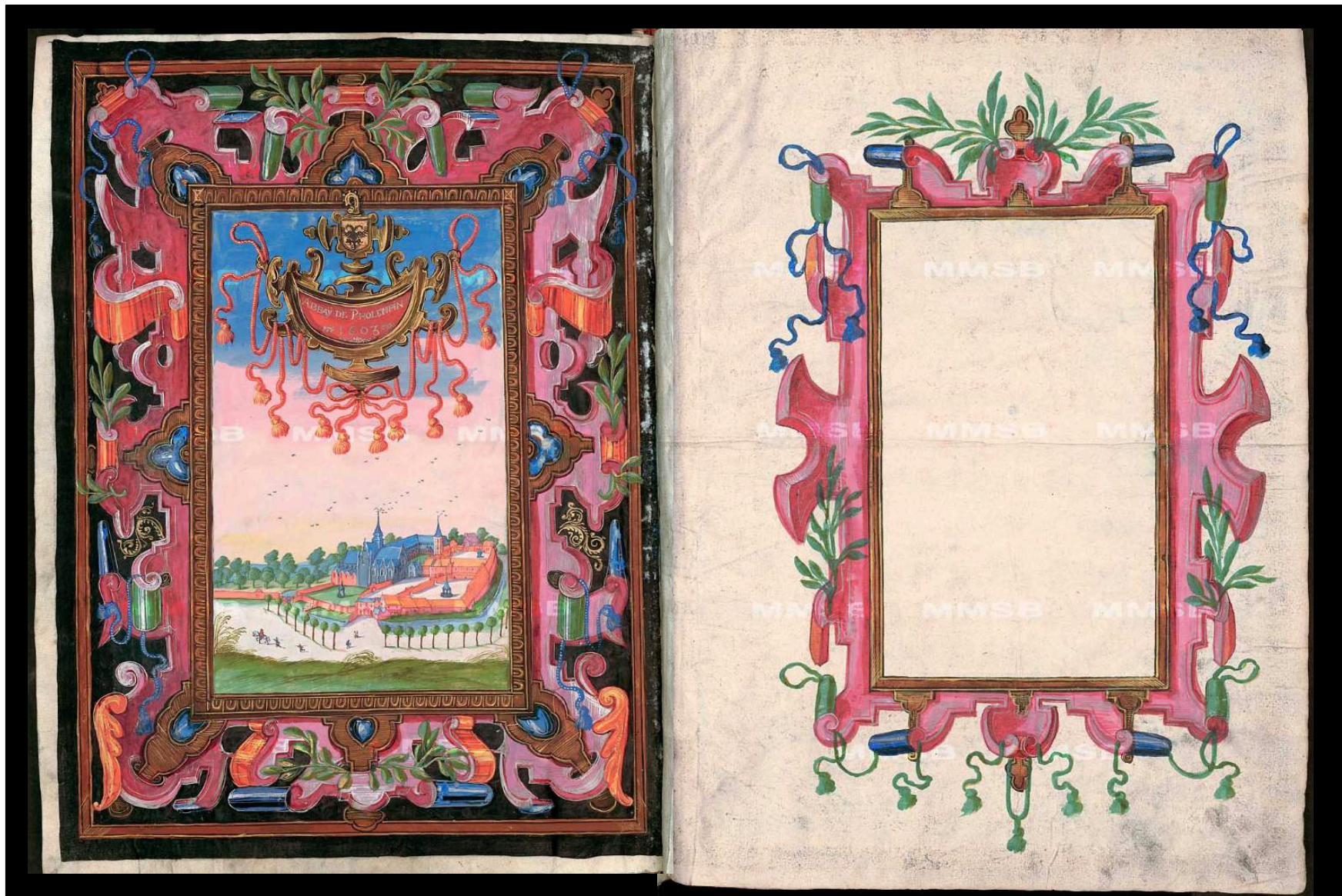
**Figure 68.** Sotheby's Lot Record: 117 "Croy, Charles III, Duc de. Early seventeenth-century french manuscript, made for Charles, Duc de Croy, containing five coloured views and maps, signed and annotated by the Duke ("deCroy") and dated by him 30 April 1606." Watercolour on parchment.





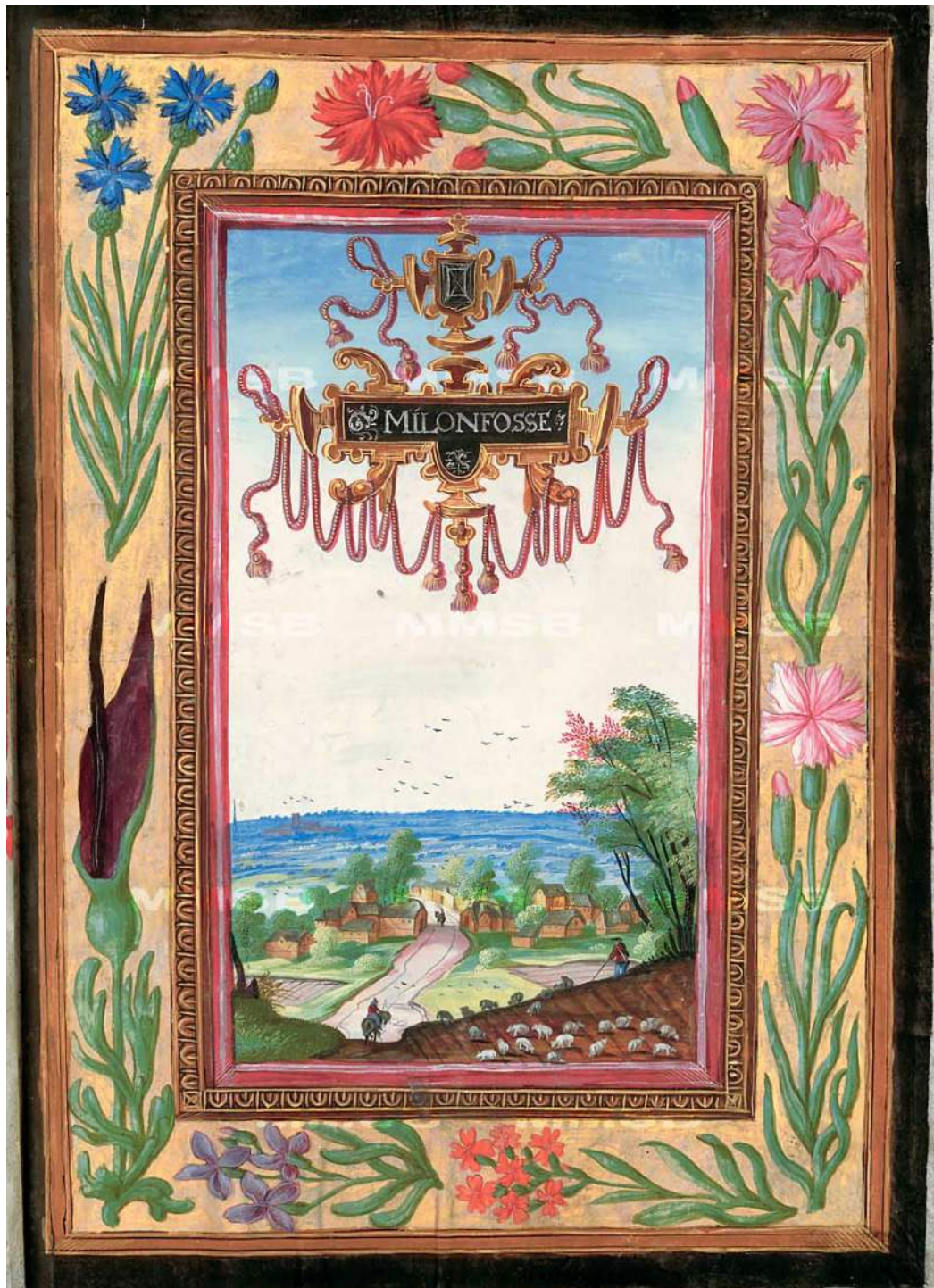
**Figure 69.** Map marking the still extant locations painted in the *Lille Douai Orchies* Album.





**Figure 70** . Adrien de Montigny, *Lille Douai Orchies Album*, 6v and 7r. 1603, Watercolour on Parchment, 52.5 x 39cm, National Library of the Czech Republic, Prague.





**Figure 71.** Adrien de Montigny, *Lille Douai Orchies Album: Milonfosse*, 190r. 1603, Watercolour on Parchment, 52.5 x 39cm, National Library of the Czech Republic, Prague.





**Figure 72.** Adrien de Montigny, *Lille Douai Orchies Album*: Pottes, 186r. 1603, Watercolour on Parchment, 52.5 x 39cm, National Library of the Czech Republic, Prague.





**Figure 73.** Adrien de Montigny, *Lille Douai Orchies*, Album: Abbey of Marquette, 10r. 1603, Watercolour on Parchment, 52.5 x 39cm, National Library of the Czech Republic, Prague.





**Figure 74.** Adrien de Montigny, *Lille Douai Orchies Album*: Comines 24v. 1603, Watercolour on Parchment, 52.5 x 39cm, National Library of the Czech Republic, Prague.





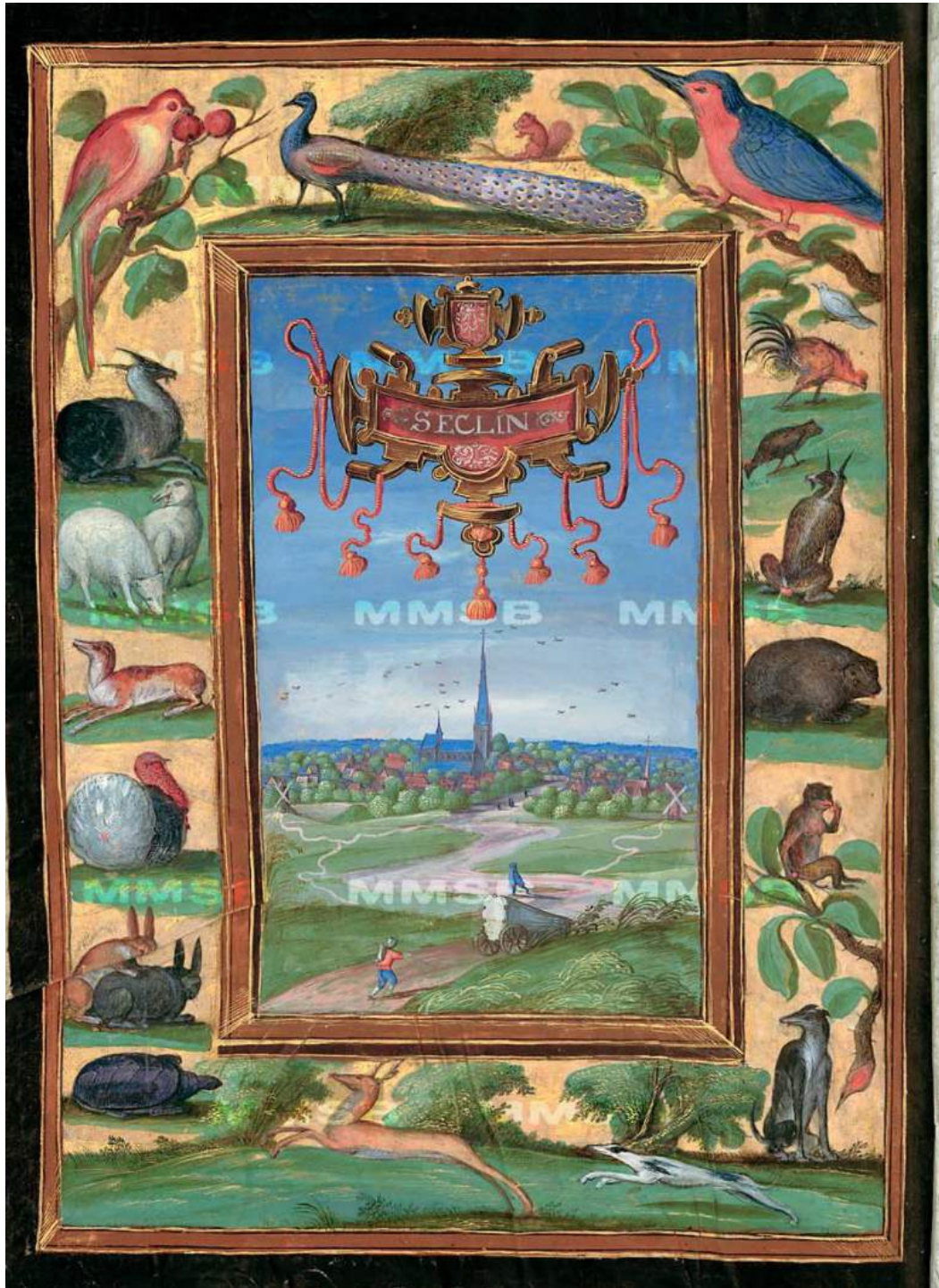
**Figure 75.** Adrien de Montigny, *Hainaut Album*: Fremicourt, 68r. Watercolour on Parchment. 52.5 x 39cm. ONB: Cod. Min 50/11 Han. Austrian National Library, Vienna.





**Figure 76.** Adrien de Montigny, *Lille Douai Orchies Album*: Barony of Wavrin, 38r. 1603, Watercolour on Parchment, 52.5 x 39cm, National Library of the Czech Republic, Prague.





**Figure 77.** Adrien de Montigny, *Lille Douai Orchies Album: Seclin*, 42v. 1603, Watercolour on Parchment, 52.5 x 39cm, National Library of the Czech Republic, Prague.



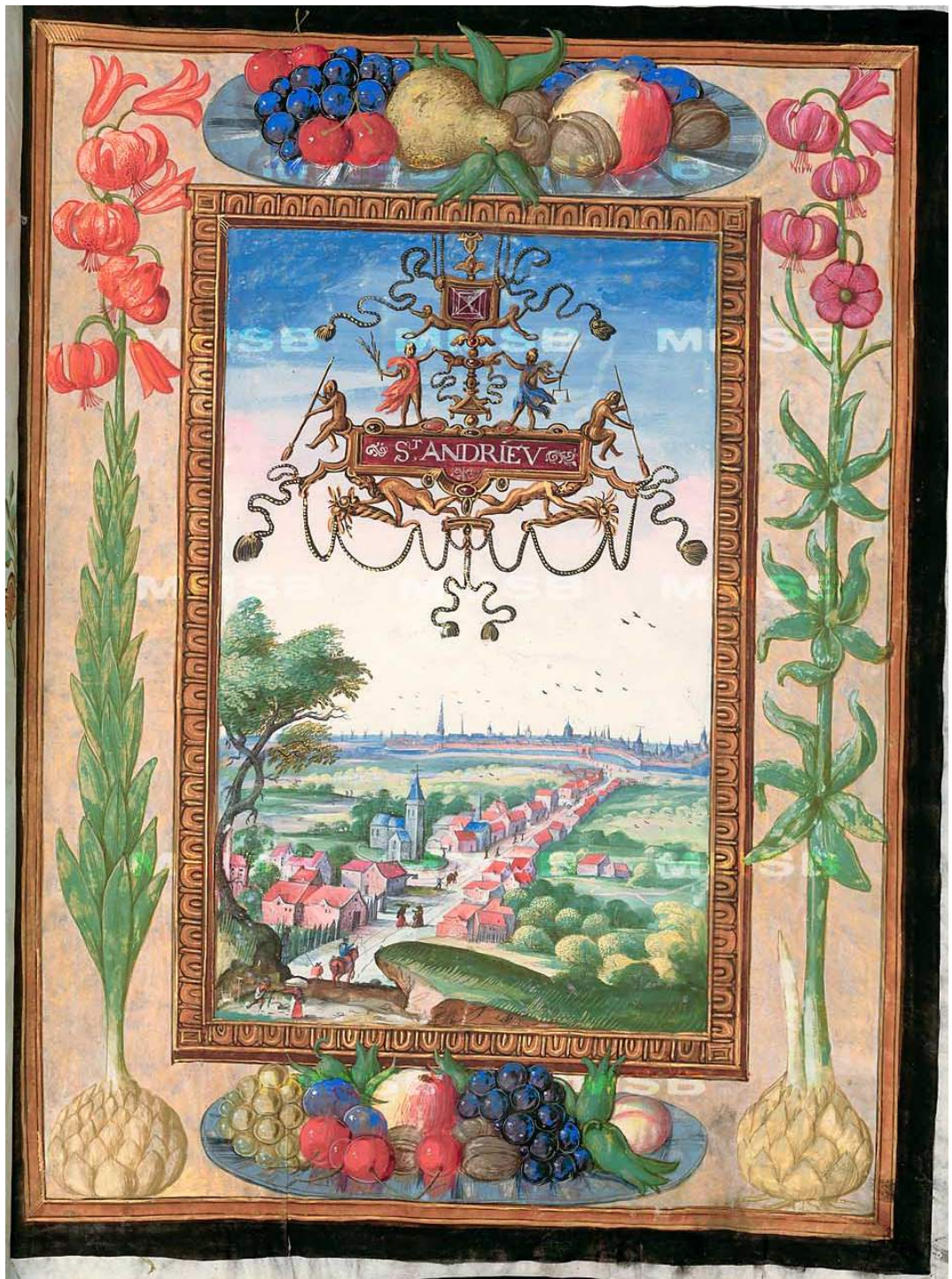


**Figure 78.** Adrien de Montigny, *Lille Douai Orchies Album*: Hellem 46r. 1603, Watercolour on Parchment, 52.5 x 39cm, National Library of the Czech Republic, Prague.





**Figure 79.** Anton van den Wyngaerde, Panoramic view of Saragossa, Cervera and the coast of Spain, 1570, Pen and Ink, 43.0 x 63.2 cm, V & A Museum, London.



**Figure 80.** Adrien de Montigny, *Lille Douai Orchies Album*: St Andriev, 88r. 1603, Watercolour on Parchment, 52.5 x 39cm, National Library of the Czech Republic, Prague.





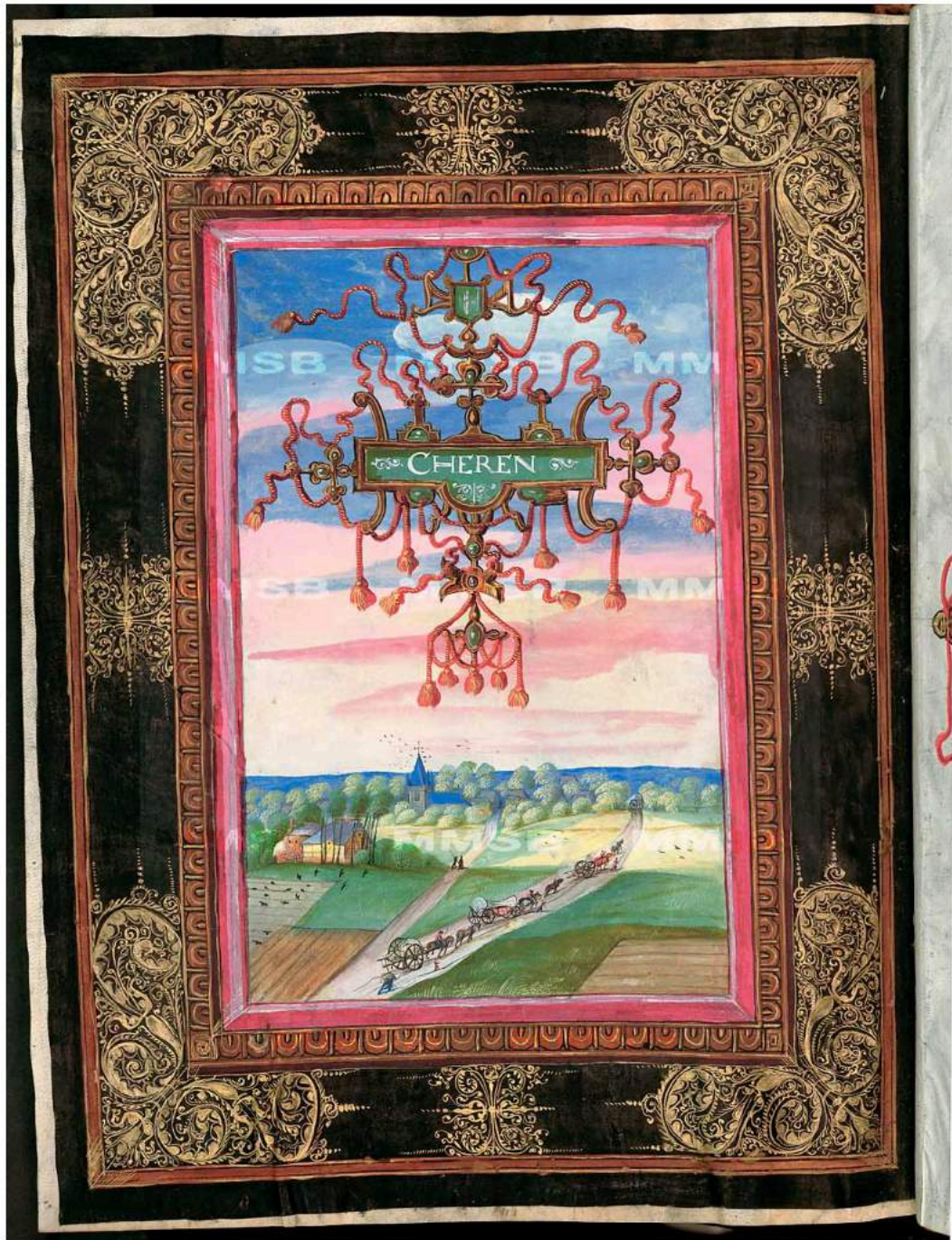
**Figure 81.** Attributed to the Master James IV of Scotland and his workshop. Active in Ghent, Book of Hours, use of Rome (the 'London Rothschild Hours' or the 'Hours of Joanna I of Castile'), c.1500, Flemish, Add. Ms. 35313 f. 54v. British Library, London.





**Figure 82.** Adrien de Montigny, *Lille Douai Orchies Album*: Fleines, 10v. 1603, Watercolour on Parchment, 52.5 x 39cm, National Library of the Czech Republic, Prague.





**Figure 83.** Adrien de Montigny, *Lille Douai Orchies Album*: Cheren 50v. 1603, Watercolour on Parchment, 52.5 x 39cm, National Library of the Czech Republic, Prague.





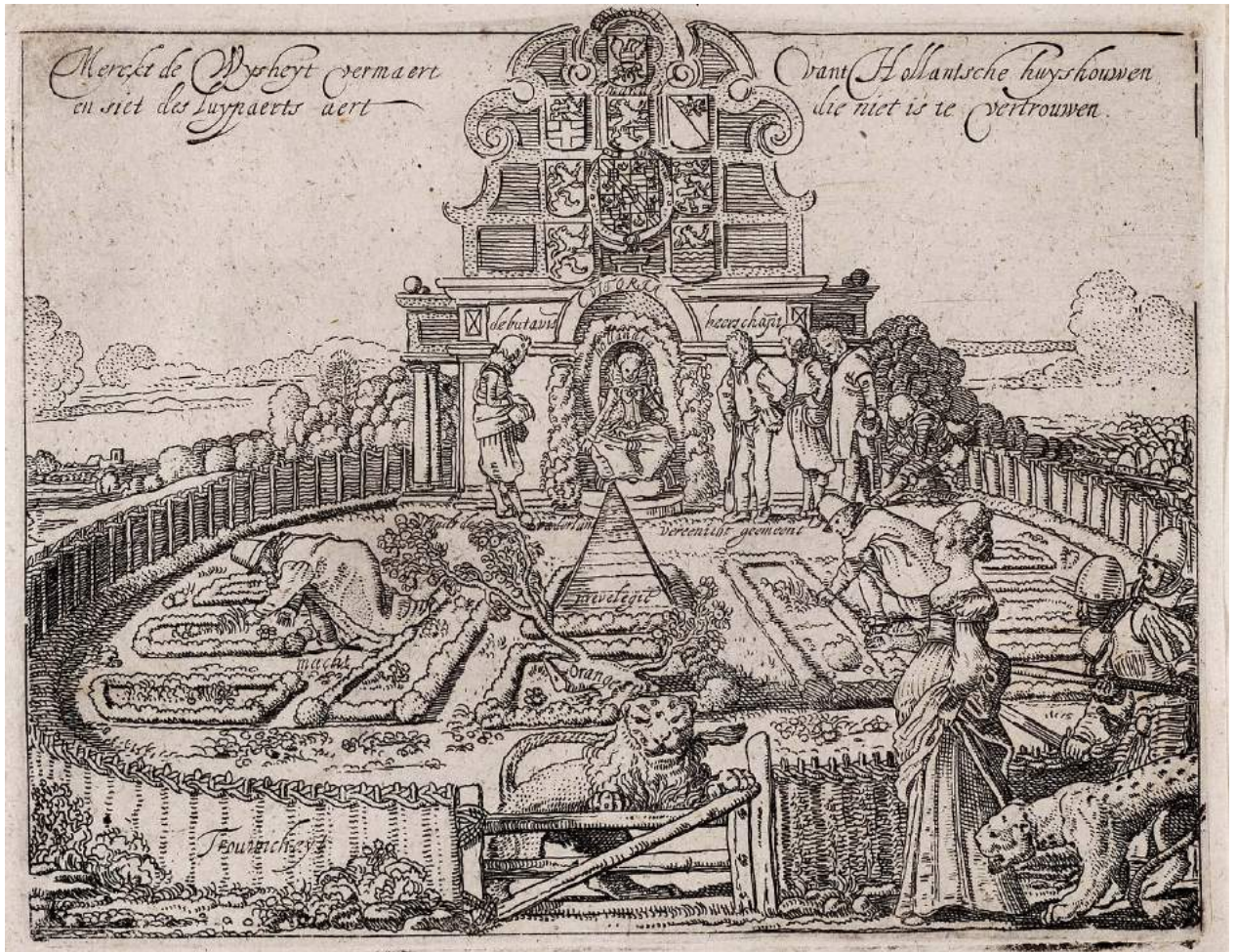
**Figure 84.** Adrien de Montigny, *Lille Douai Orchies Album*: Turcoing, 42v. 1603, Watercolour on Parchment, 52.5 x 39cm, National Library of the Czech Republic, Prague.





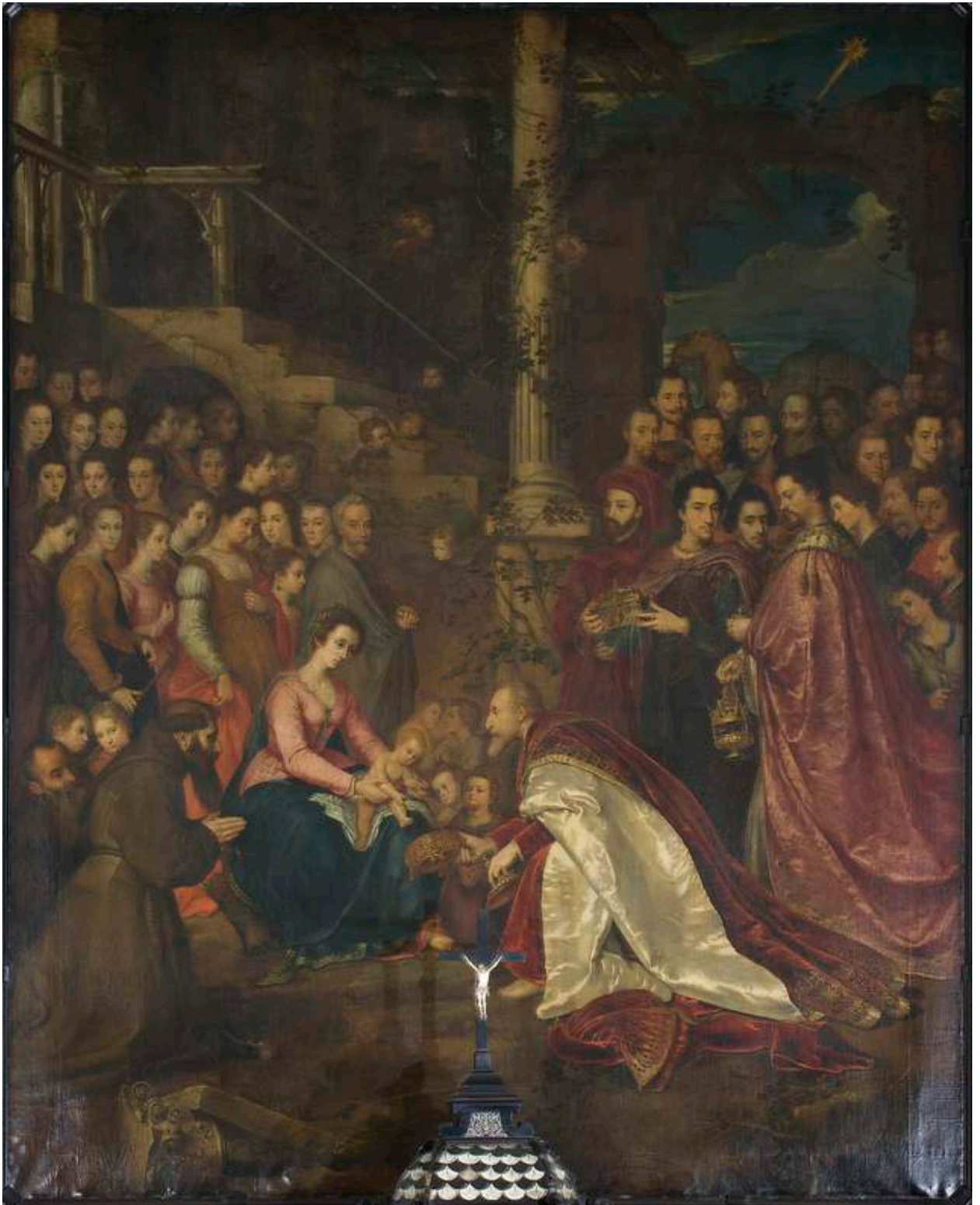
**Figure 85.** Adrien de Montigny, *Lille Douai Orchies Album: Herin*, 106r. 1603, Watercolour on Parchment, 52.5 x 39cm, National Library of the Czech Republic, Prague.





**Figure 86.** Willem Buytewech, *Allegory on the Deceitfulness of Spain and the Liberty and Prosperity of the Dutch Republic*, c.1615, Etching, Engraving and Drypoint, 14.5 x 18.4cm, Museum of Fine Arts, Boston.



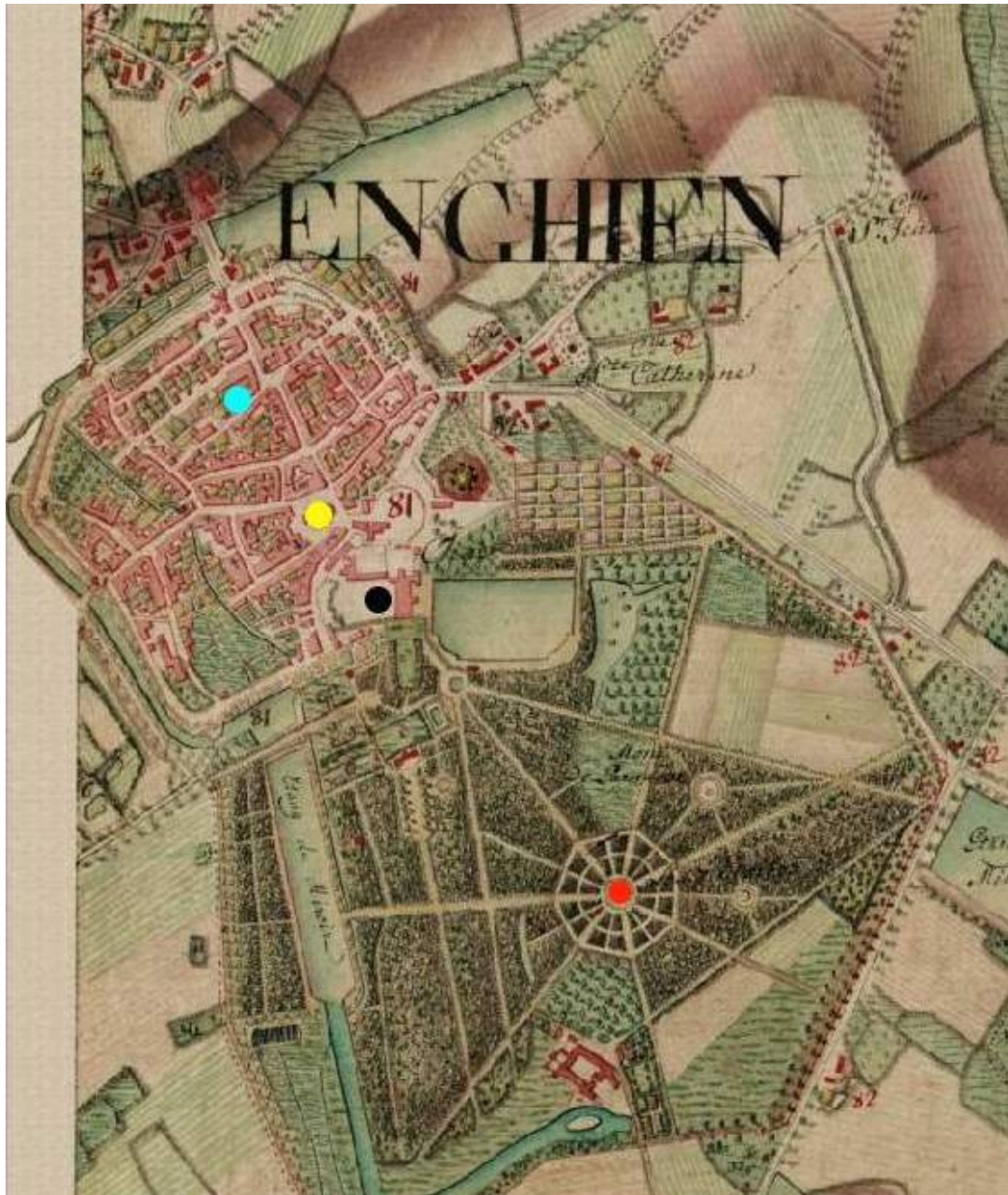


**Figure 87.** Servaes de Coelx, *Adoration of the Magi*, 1615-17, Oil on Canvas, 330 x 264cm, Capuchin Chapel, Engghien.



**Figure 88.** Unknown artist, *Portrait of Jean de Ligne and Countess Margaret de a Marck*. c.1600, Watercolour on Parchment, 19 x 26.7cm, Iconographie ref. honour 49, H49, r5 and v5, Arenberg Archive, Enghien. Inset: Detail of *Adoration of the Magi*.





**Figure 89.** Detail of Ferraris Map, 1775, Bibliothèque Royale de Belgique, Brussels.

- Enghien gardens
- Site of Enghien Chateau
- St Nicholas Church
- Capuchin Chapel



**Figure 90.** Entrance to the Capuchin Convent, Enghien. Photograph my own.





**Figure 91.** Sarcophagus with Adoration of the Magi and Resurrection of the Dry Bones (Front), Rome c.320, Vatican Museo Pio Cristiano Inv. 31450.



**Figure 92.** Jan Gossaert, *Adoration of the Kings*, 1510-15, Oil on Oak, 179.8 x 163.2cm, National Gallery, London.





**Figure 93.** Detail of Figure 87. Servaes de Coelx, *Adoration of the Magi*, 1615-17, Oil on Canvas, 330 x 264cm, Capuchin Chapel, Enghien.



**Figure 94.** Netherlandish School, *Adoration of the Magi*, c.1520. Oil on Wood, 68.9 x 54.6cm, Metropolitan Museum, New York.



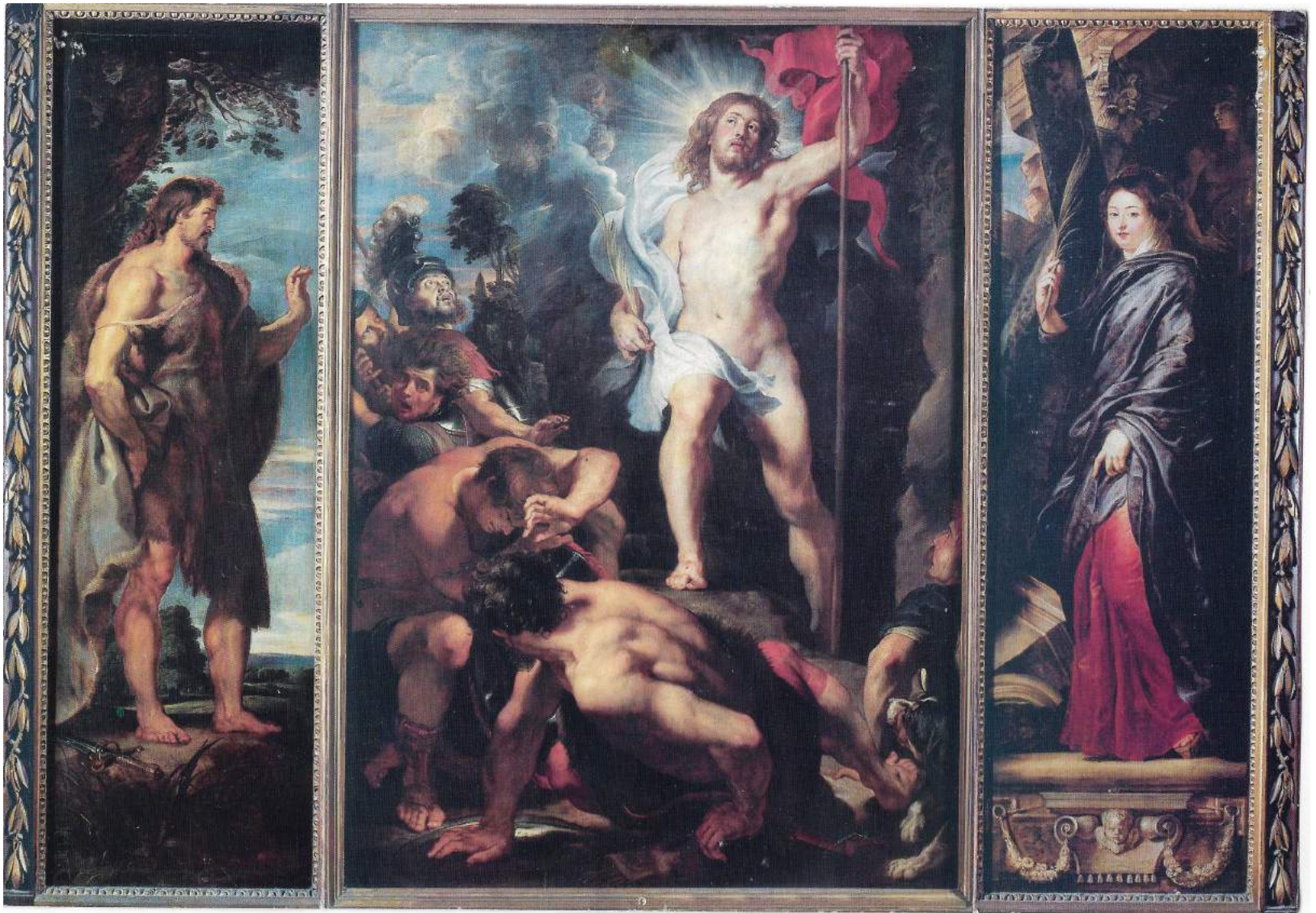


**Figure 95.** Pompeo Leoni, *Funerary Figures of Philip II and his Family*, 1597-1600, gilded bronze, Royal Basilica of El Escorial.



**Figure 96.** Peter Paul Rubens, *The Descent from the Cross*, 1612-1614, Oil on Panel, 420.5 x 320cm, Cathedral of Our Lady, Antwerp.





**Figure 97.** Peter Paul Rubens, *The Resurrection of Christ*, 1611-1612, Oil on Panel, 138 x 98cm, Cathedral of Our Lady, Antwerp.





**Figure 98.** Colijn de Nole, Tomb monument of Reinoud III van Brederode and Philippote van der Marck, c.1540, Wood and Stone, 255 x 176 x 286cm, Grote Kerk, Vienen.





**Figure 99.** Detail of Figure 98. Colijn de Nole, Tomb monument of Reinoud III van Brederode and Philippote van der Marck, c.1540, Wood and Stone, 255 x 176 x 286cm, Grote Kerk, Vienen.



**Figure 100.** Hans Holbein, *Body of the Dead Christ in the Tomb*, 1521, Oil on Limewood, 30.5 x 200cm, Kunstmuseum, Basel.





**Figure 101.** Detail of Figure 87. Servaes de Coelx, *Adoration of the Magi*, 1615-17, Oil on Canvas, 330 x 264cm, Capuchin Chapel, Enghien.



**Figure 102.** Benozzo Gozzoli, *Adoration of the Magi*, Cell 39, North Corridor The San Marco Convent, Florence.





**Figure 103.** Anonymous triptych depicting Anne de Croy and Charles d’Arenberg with their children, c.1610, Arenberg Collection, Image from Édouard Laloire, *Recueil Iconographique de la Maison d’Arenberg* (Brussels; Phototypie E. Thill, 1940).



**Figure 104.** Rogier van der Weyden, *Pierre Bladelin Triptych*, 1445-1450, Oil on Panel, 91 x 89cm (centre panel) 91 x 40cm (each wing), Staatliche Museum, Berlin.





**Figure 105.** Detail of Figure 87. Servaes de Coelx, *Adoration of the Magi*, 1615-17, Oil on Canvas, 330 x 264cm, Capuchin Chapel, Enghien.