

## ALL CHAPTER MAPS

All maps (except Fig 65, details below): ©Crown copyright/database right 2016. Ordnance Survey/EDINA supplied service

Page numbers given in the Contents List below refer to the page numbers *in this document*. The map's page number *in the thesis* is shown in the Map captions below. Very large scale maps are not included.

## CONTENTS

### CHAPTERS ONE, TWO & THREE no maps

### CHAPTER FOUR

Fig 30	Map of Rombalds Moor and environs.....	5
Fig 34	Mesolithic sites from HER record, shown with all rock-art sites.....	6
Fig 36	Neolithic sites from HER record, shown with all rock-art sites.....	7
Fig 38	Bronze Age scatters from HER record, with all rock-art sites, and approximate centres of major cairnfields.....	8
Fig 39	The enclosures on Green Crag Slack.....	9
Fig 42	Rombalds Moor, all sites.....	10

### CHAPTER FIVE

Fig 44	Rombalds Moor study area, as defined for this study.....	11
Fig 51	Viewshed and real-world views from the Haystack (top).....	12

Fig 52	Doubler 1 viewshed.....	13
Fig 53	Cumulative viewsheds of Doublers 1 & 2.....	14

**CHAPTER SIX**

Fig 54	Distribution of sites and motifs on Rombalds Moor, with proposed natural monuments and their viewsheds.....	15
Fig 57	Distribution of clifftop and detached site-types.....	16
Fig 58	Distribution of ground-level and upstanding site-types and motifs:	
	Top left: Distribution of ground-level sites, cups-only.....	17
	Bottom left: Distribution of ground-level sites, cup-and-rings.....	18
	Top right: Distribution of upstanding sites, cups-only.....	19
	Bottom right: Distribution of upstanding sites, cup-and-rings.....	20
Fig 59	Carved stones and lithics: the whole Moor.....	21
Fig 60	Carved stones and lithics: Green Crag Slack detail.....	22
Fig 61	Cairns, stone circles and the approximate centres of the four major cairnfields.....	23
Fig 62	The three enclosures of Green Crag Slack.....	24
Fig 64	Possible northern routeways.....	25
Fig 65	Neolithic sites in northern Yorkshire. Image: adapted from illustration by Nick Staley, p 38, in Harding (2003).....	26

Fig 66	The viewshed of 45/RV 02.....	27
Fig 67	Part of the viewshed of Bradley Moor Long Cairn.....	28
Fig 68 (TOP)	Long-distance viewshed of 45/RV 02.....	29
Fig 68 (BOTTOM)	Long-distance viewshed of 45/RV 02, detail of furthest extent of 45's viewshed, just reaching all four peaks.....	30
Fig 69	Rock-art and the settled landscape.....	31

**CHAPTER SEVEN**

Fig 71	The proposed natural monuments, the Sentinel and their viewsheds.....	32
Fig 72	Proposed natural monuments, Sentinel, and their viewsheds: Green Crag Slack detail .....	33
Fig 74	Viewshed of the Doublers. Visible area shown in red.....	34
Fig 77	Viewshed of the Neb Stone.....	35
Fig 81	Viewshed of 332/PST 01 the Pancake.....	36
Fig 83	Viewshed of the Pancake, compared with real-world visibilities.....	37
Fig 85	Viewshed of the Sentinel.....	38
Fig 88	Viewshed of the Haystack.....	39
Fig 90	Viewshed of 355/GCS 13 H2.....	40
Fig 92	Cumulative viewsheds of the Haystack, the Pancake and H2.....	41

## CHAPTER EIGHT

Fig 94	IMLT Small Locales, two trios and a pair.....	42
Fig 100	Ilkley Moor Small Locales.....	43
Fig 103	Rivock Hill & Rough Holden Small Locales.....	44
Fig 106	Green Crag Slack: possible Small Locales and Alignment.....	45
Fig 107	The Pancake’s Small Locales on GCS.....	46
Fig 119	Part of NW Edge and the proposed Ramsgill pair, PC 03 & PC 03a.....	47
Fig 121	Lanshaw North and Lanshaw South groups.....	48
Fig 122	Hawksworth pair, 187/HS 01 & 188/HS 02.....	49
Fig 123	South-western Moor: Riddlesden High Carr group.....	50
Fig 129	Stanbury Hill group, and the Todmor Stones.....	51
Fig 133	Rushy Beck pair.....	52

## CHAPTERS NINE & TEN no maps

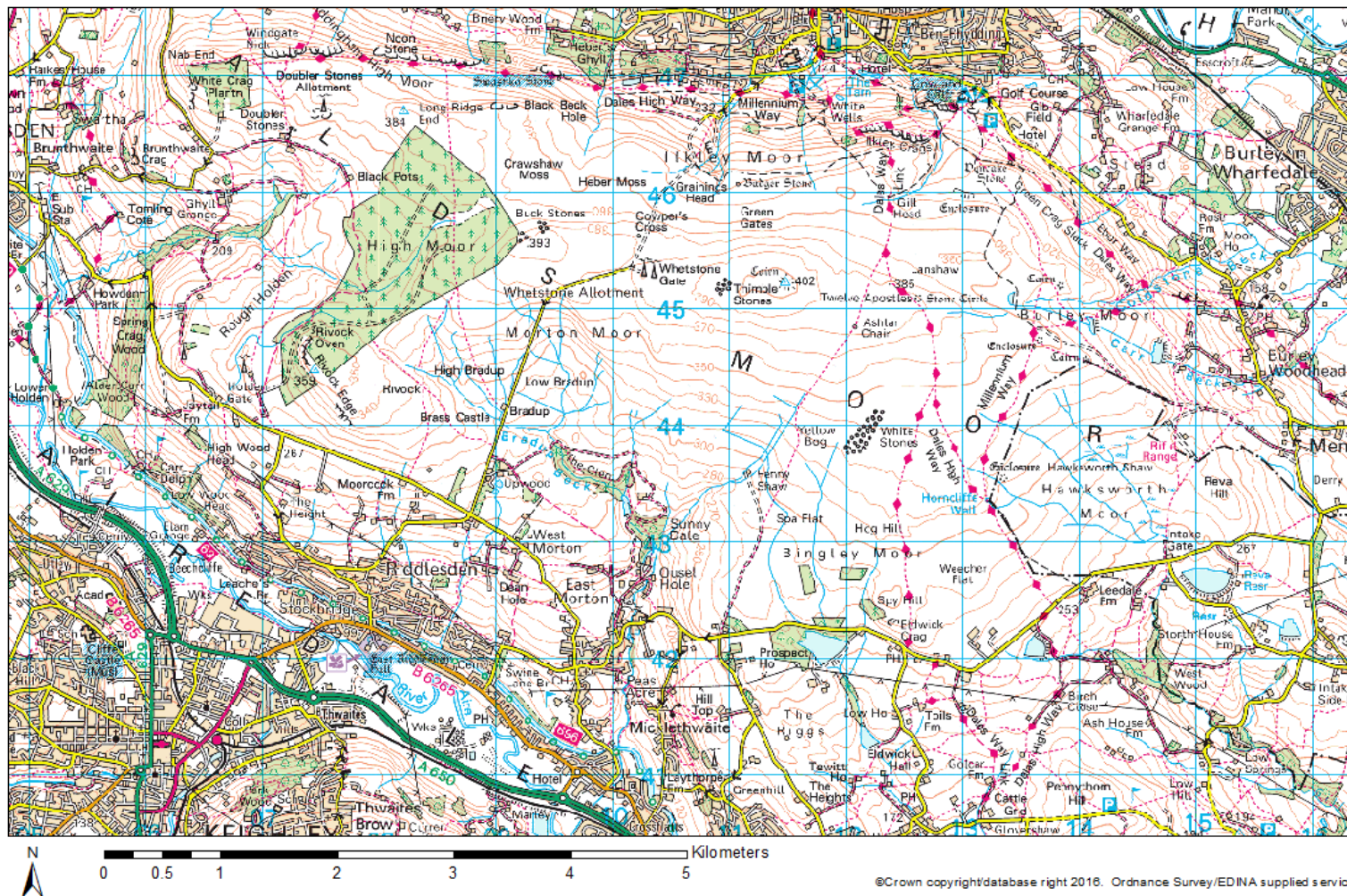


Fig 30 Map of Rombalds Moor and environs. p111

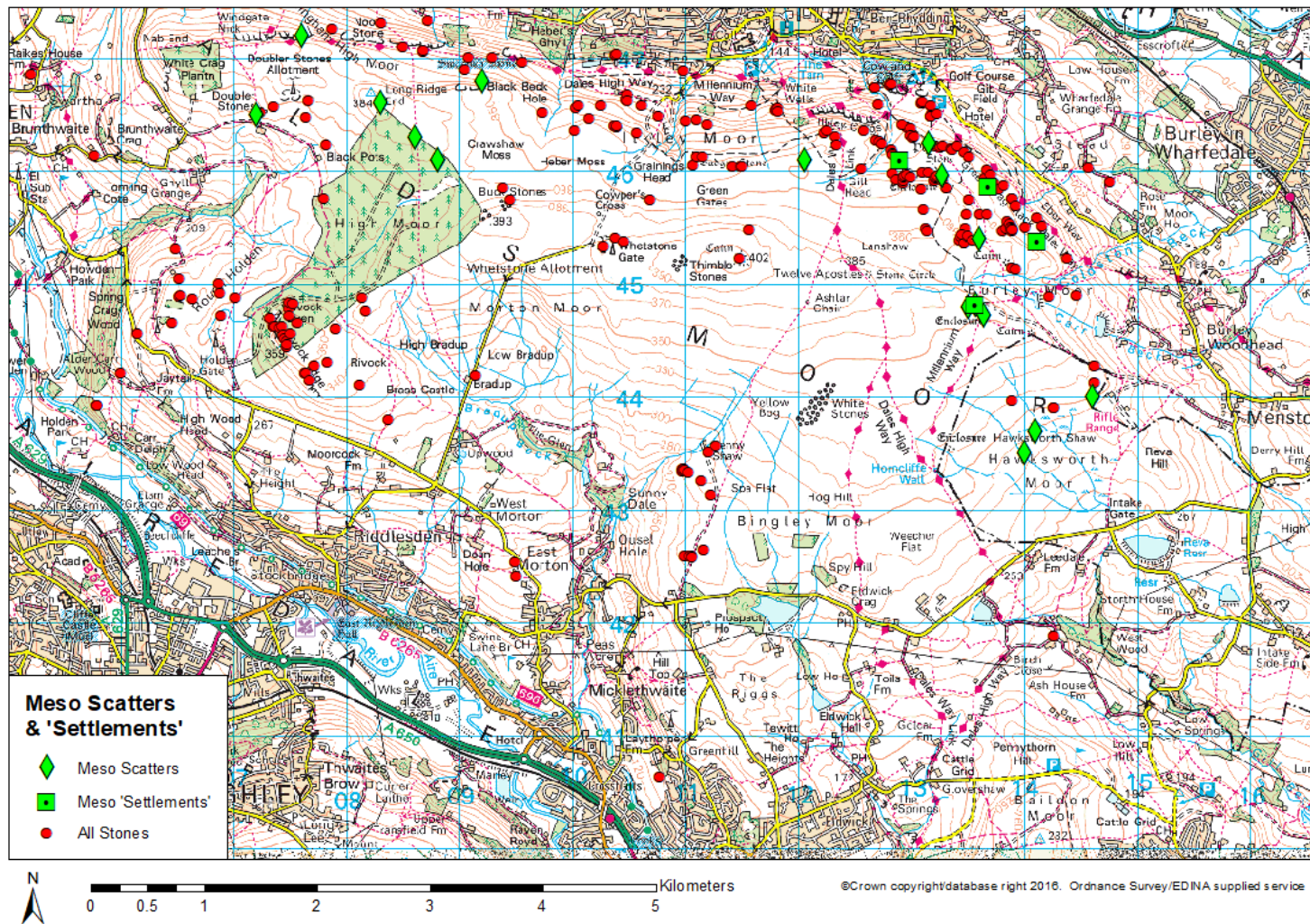


Fig 34 Mesolithic sites from HER record, shown with all rock-art sites. p123

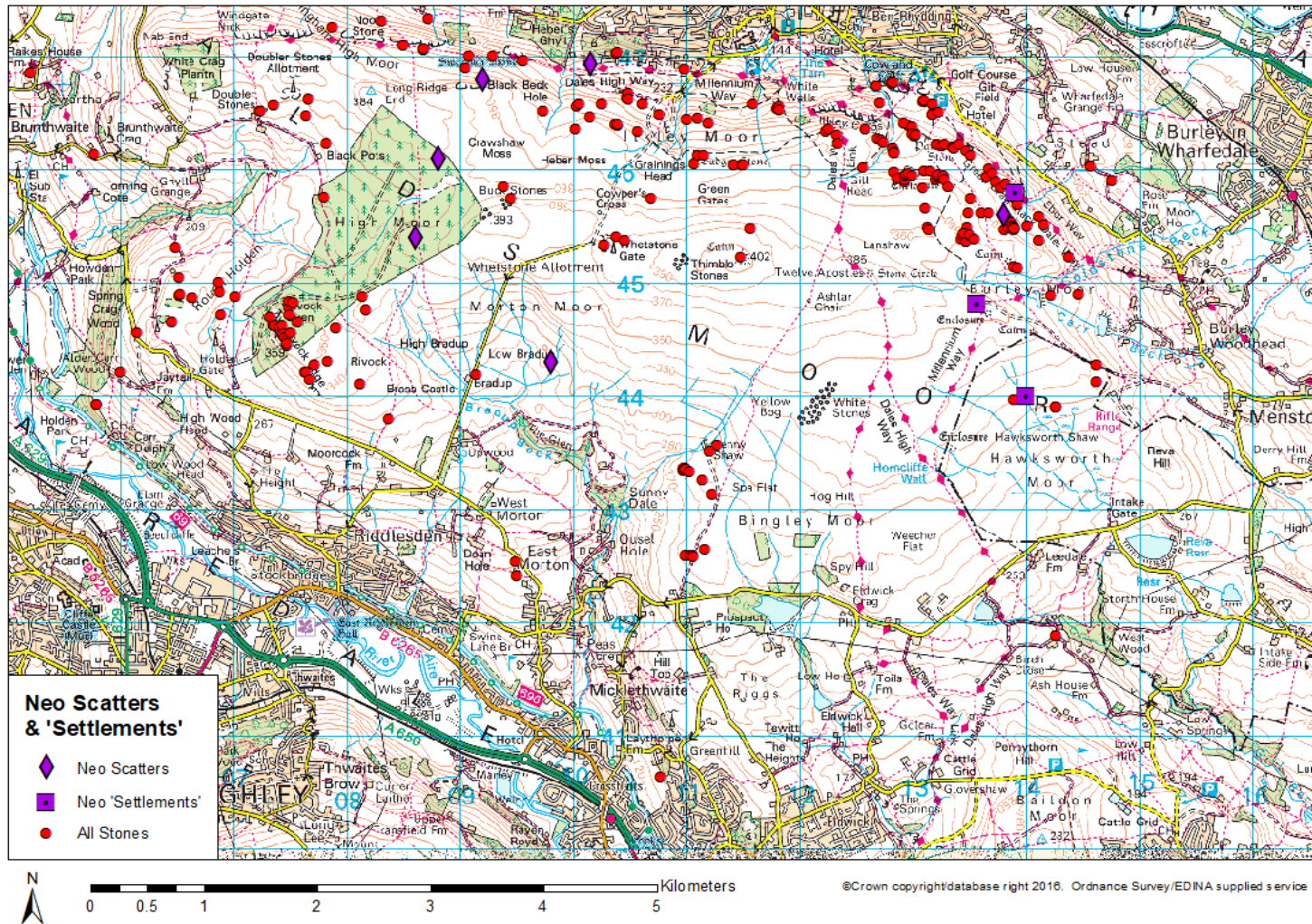


Fig 36 Neolithic sites from HER record, shown with all rock-art sites. p126

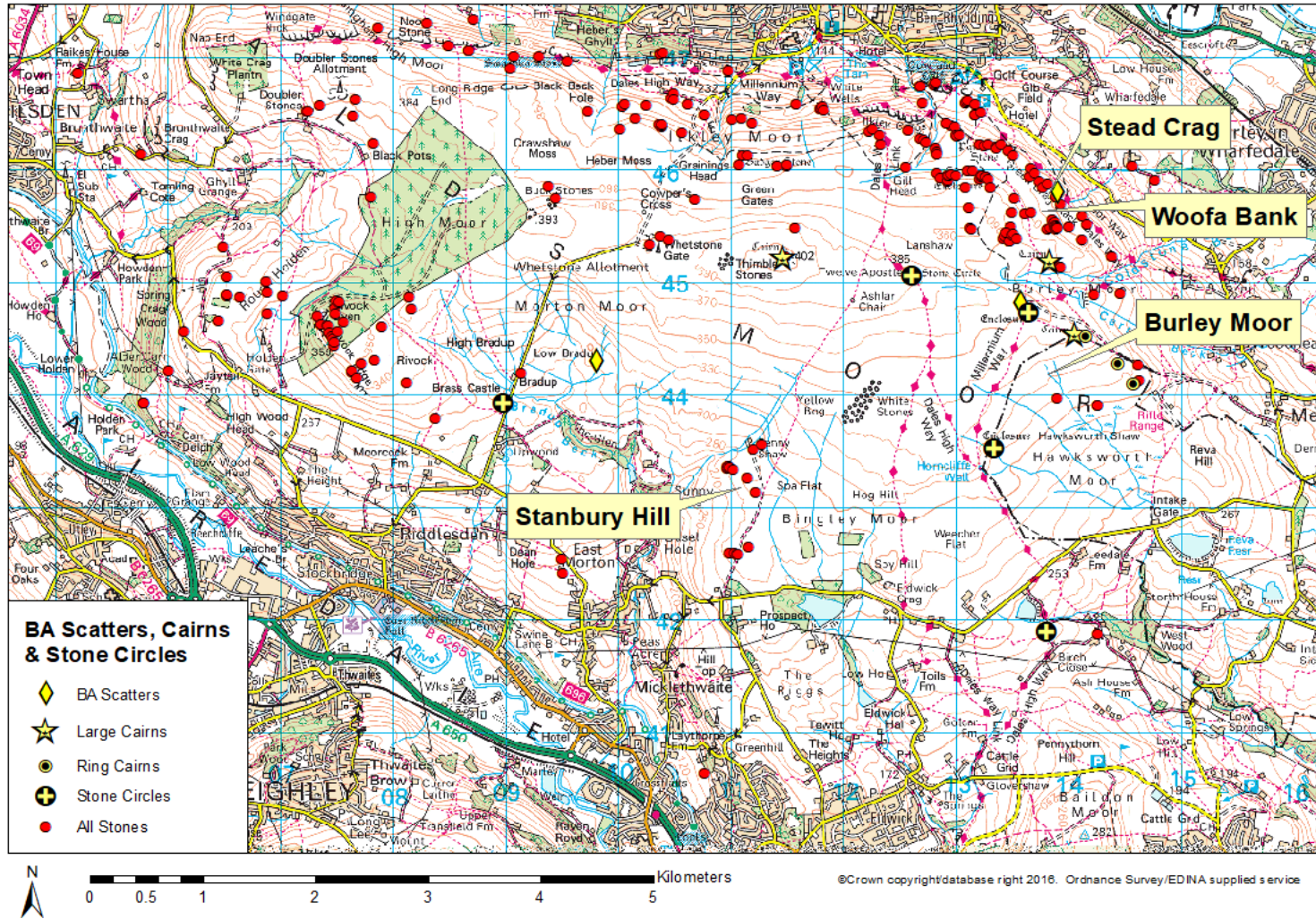


Fig 38 Bronze Age scatters from HER record, with all rock-art sites, and approximate centres of major cairnfields. p128



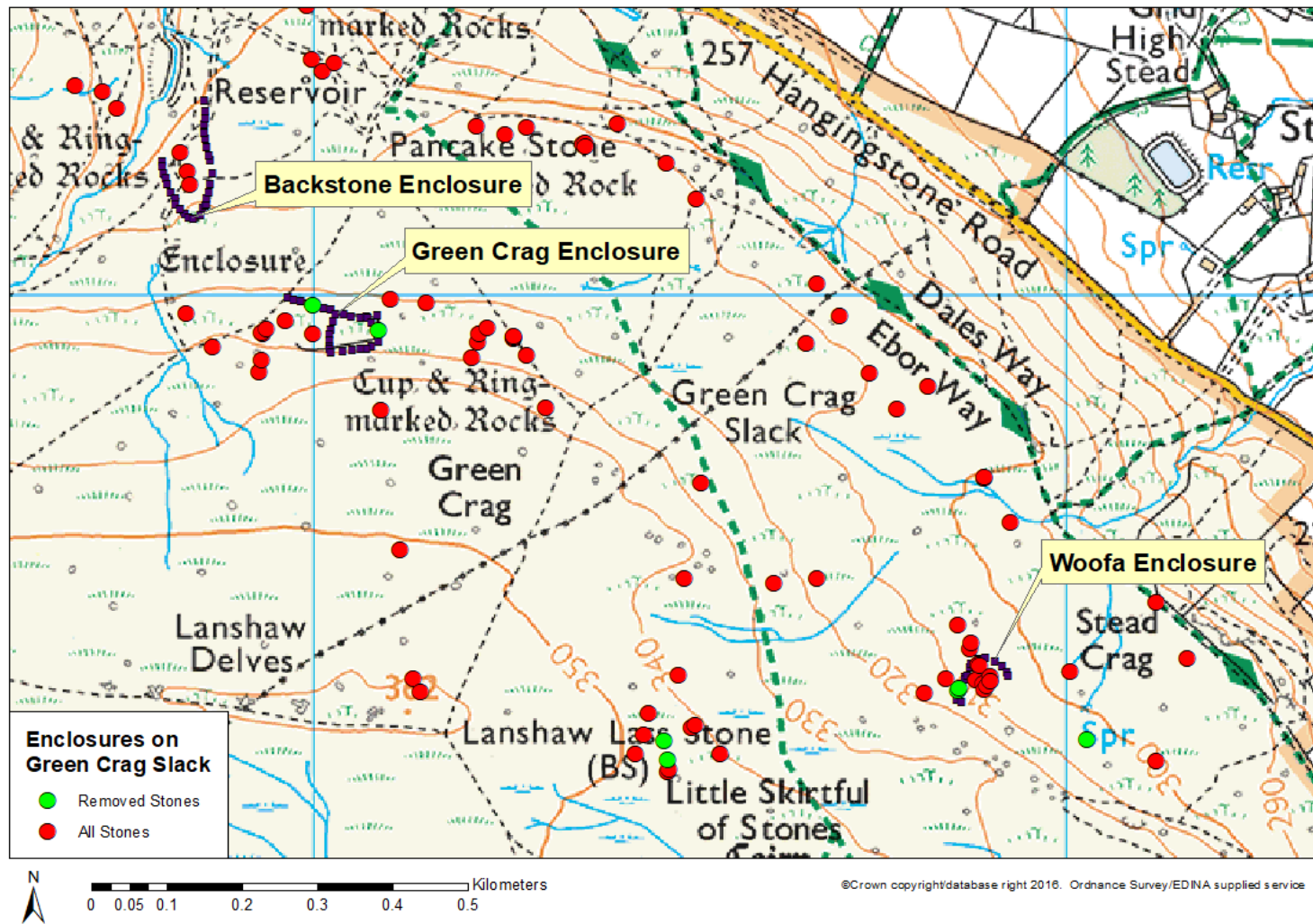


Fig 39 The enclosures on Green Crag Slack. p131

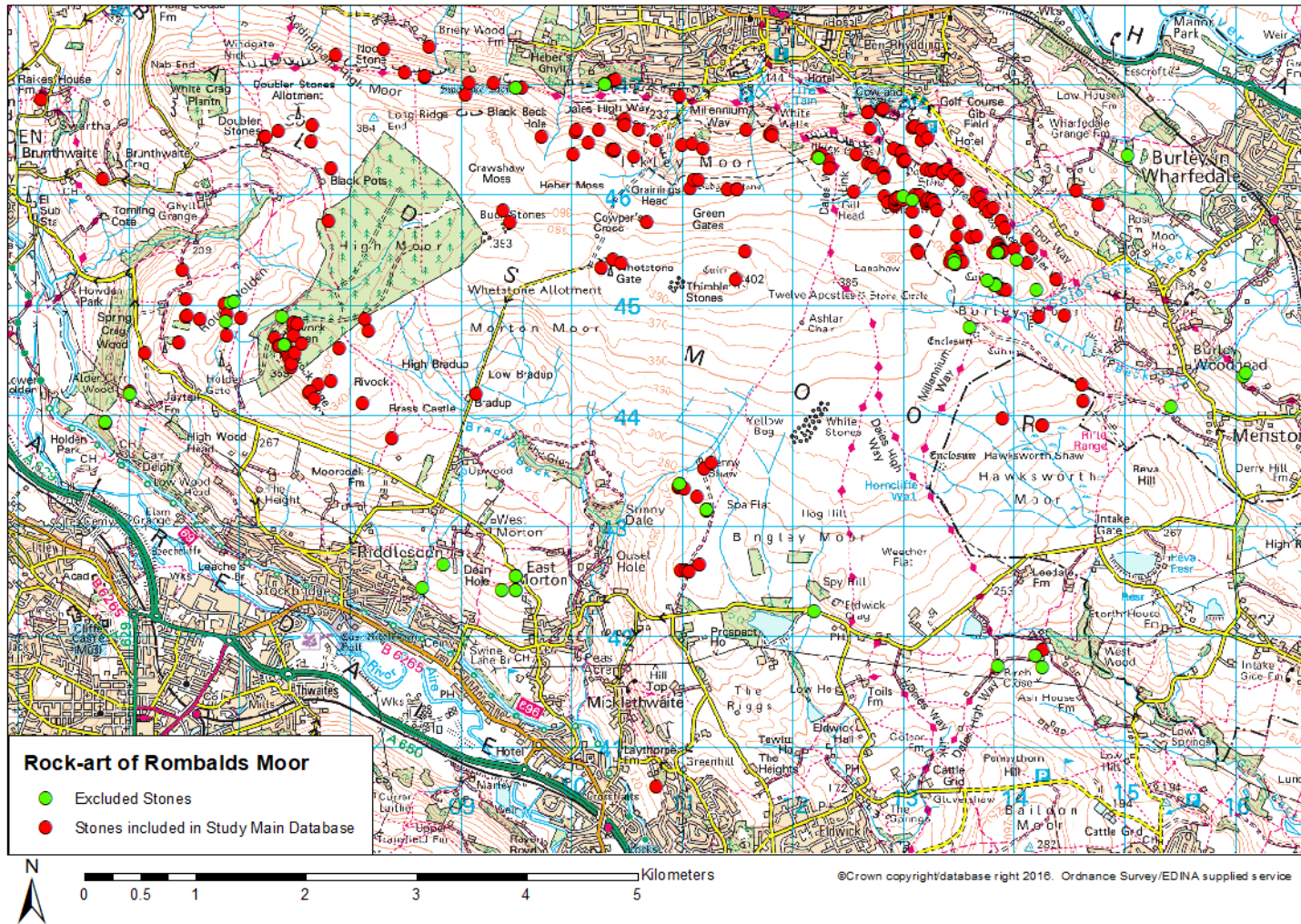


Fig 42 Rombalds Moor, all sites. p137

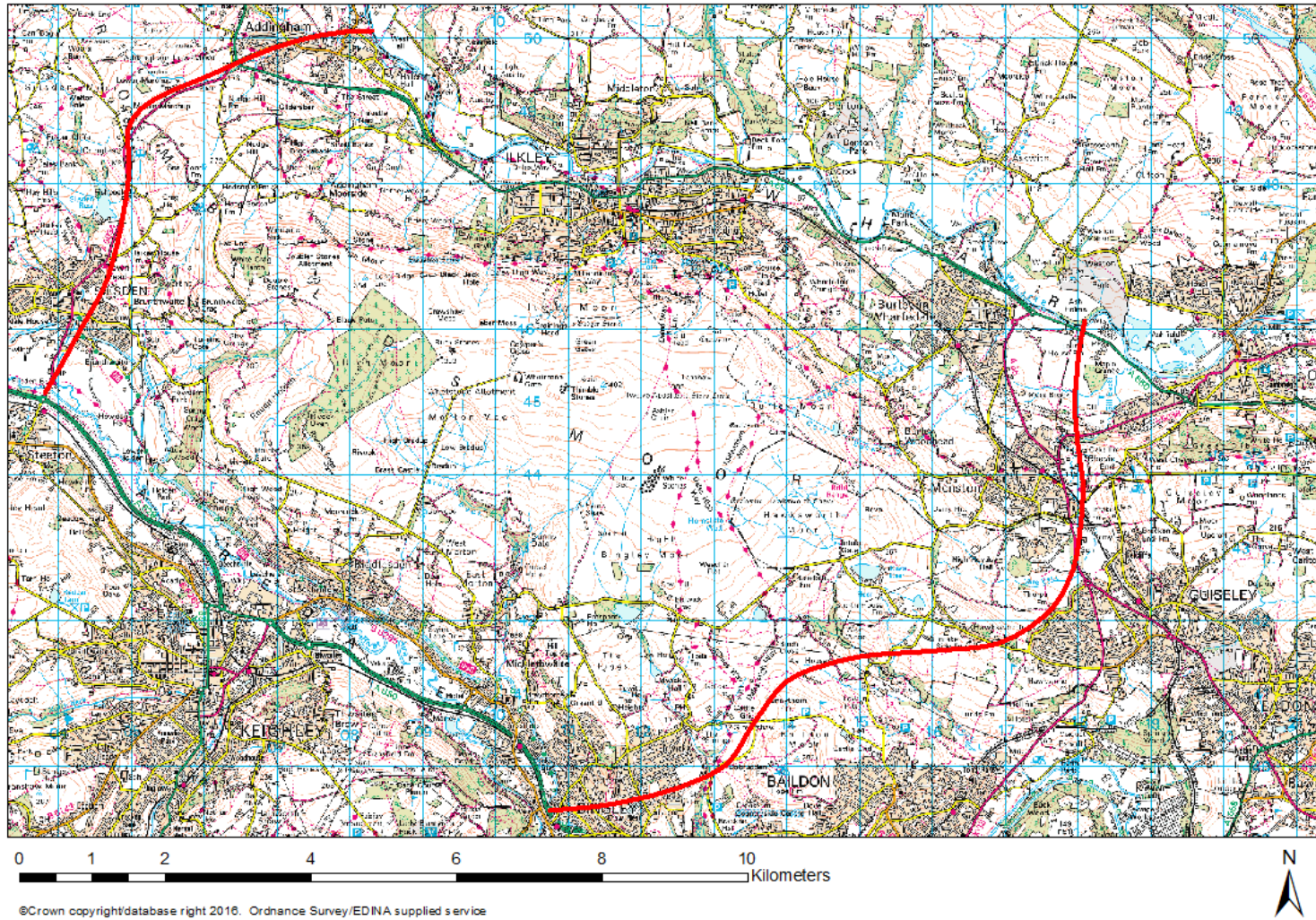


Fig 44 Rombalds Moor study area, as defined for this study. p147

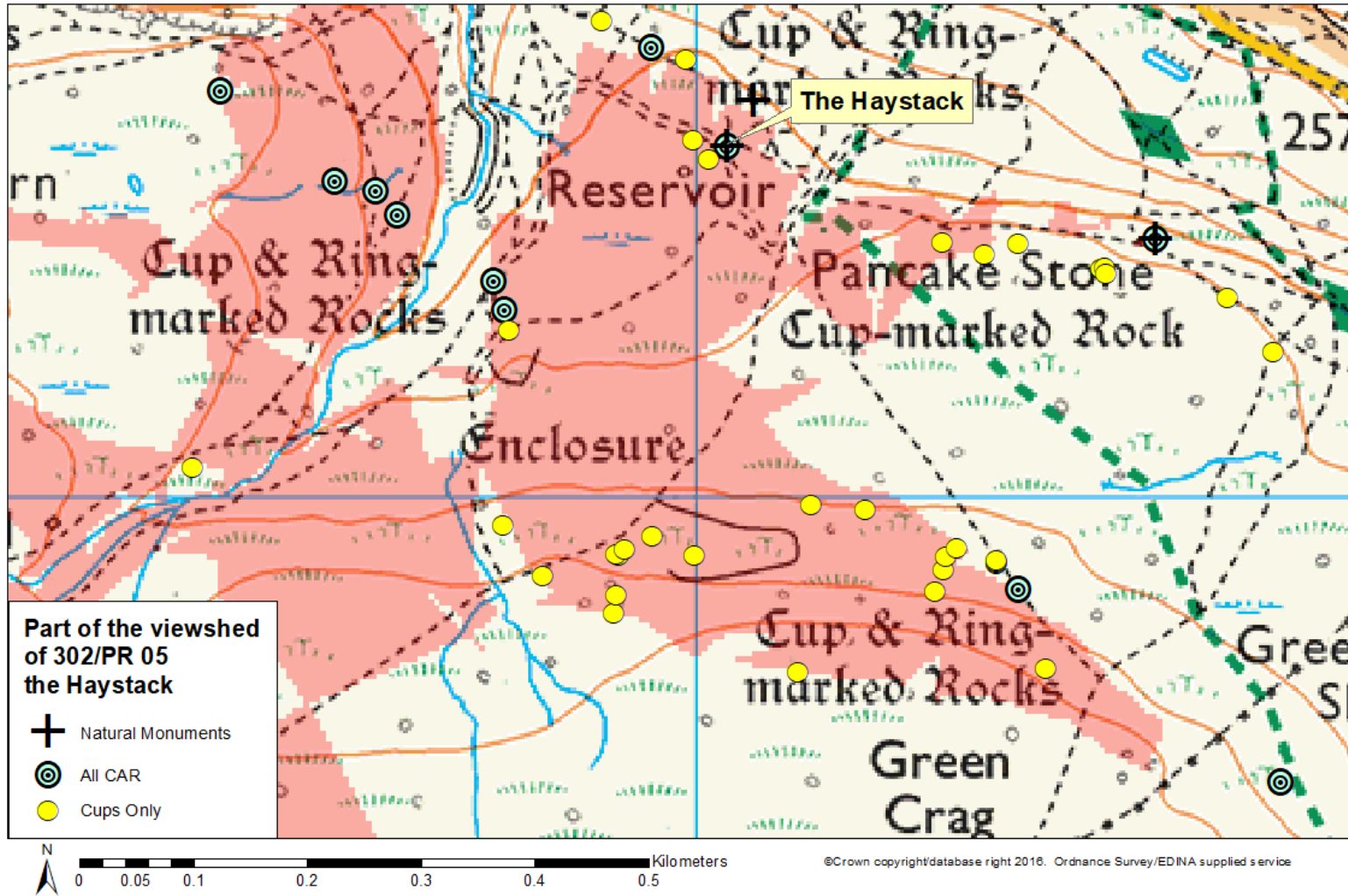


Fig 51 Viewshed and real-world views from the Haystack (top). Visible area shown in red. p175

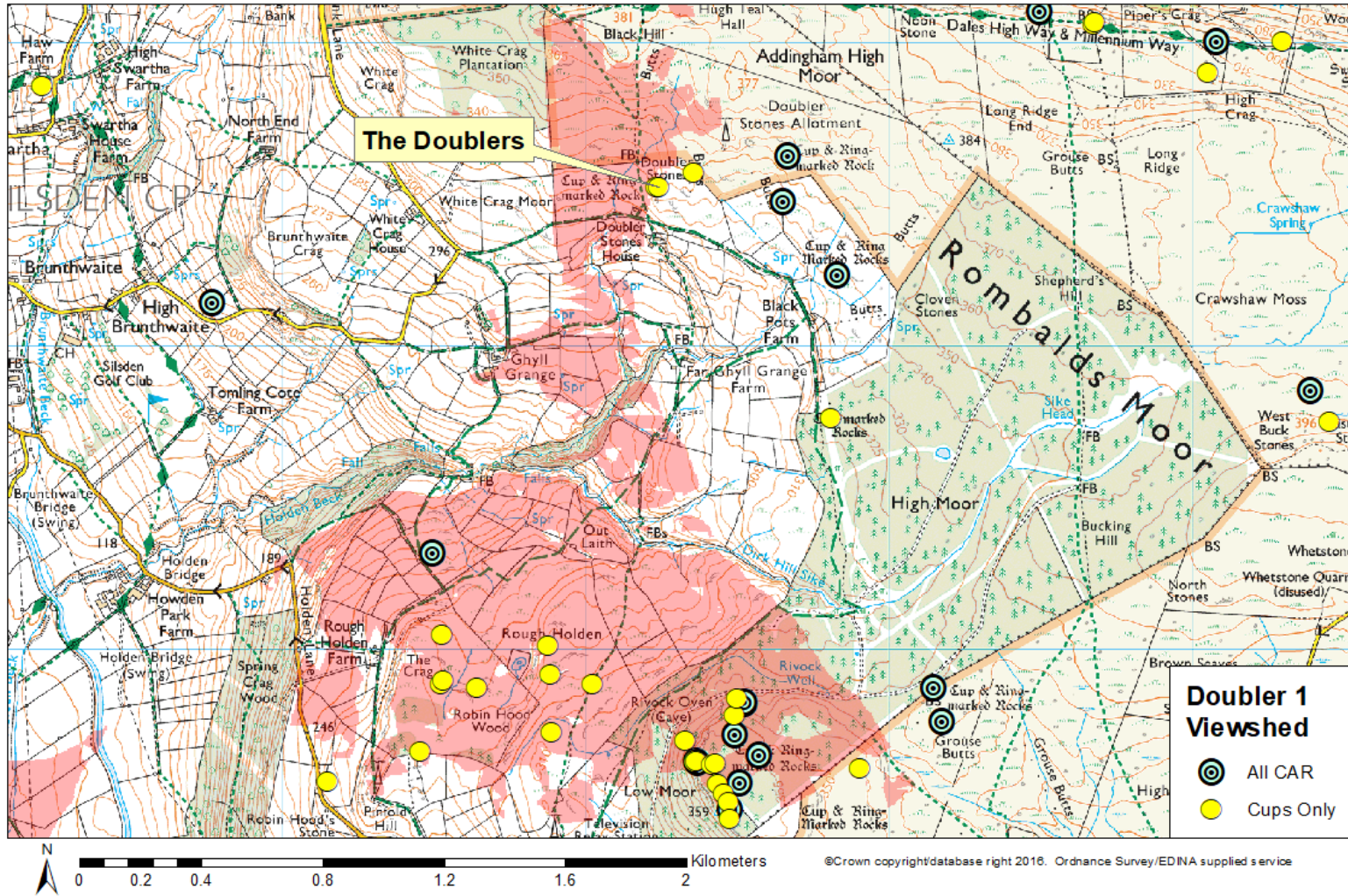


Fig 52 Doubler 1 viewshed. Visible area shown in red. p177

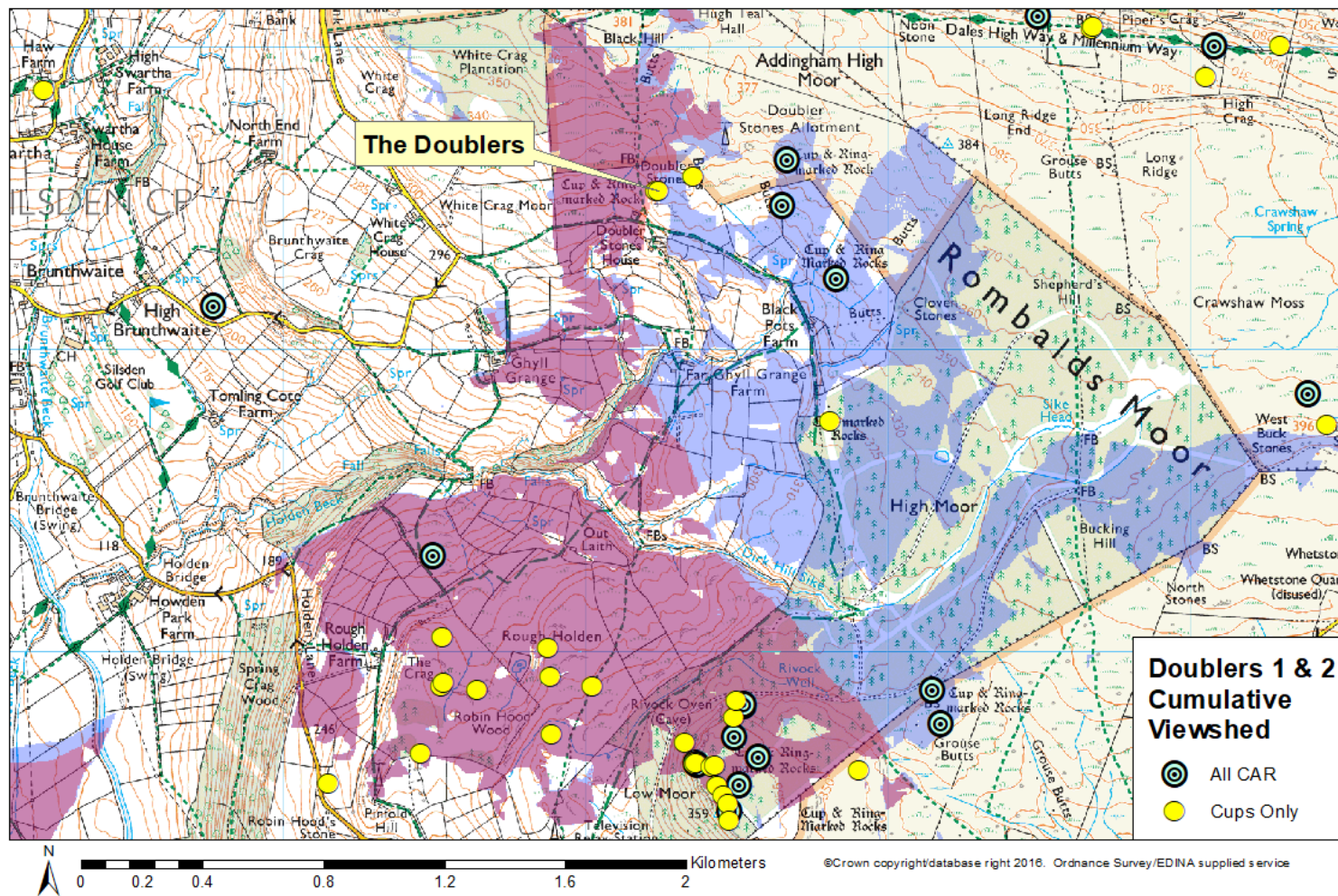


Fig 53 Cumulative viewsheds of Doublers 1 & 2. Doubler 1 viewshed in red, Doubler 2 viewshed in blue. Virtually the entire area shown as visible from Doubler 1 is also visible from Doubler 2, and thus appears purple. p178

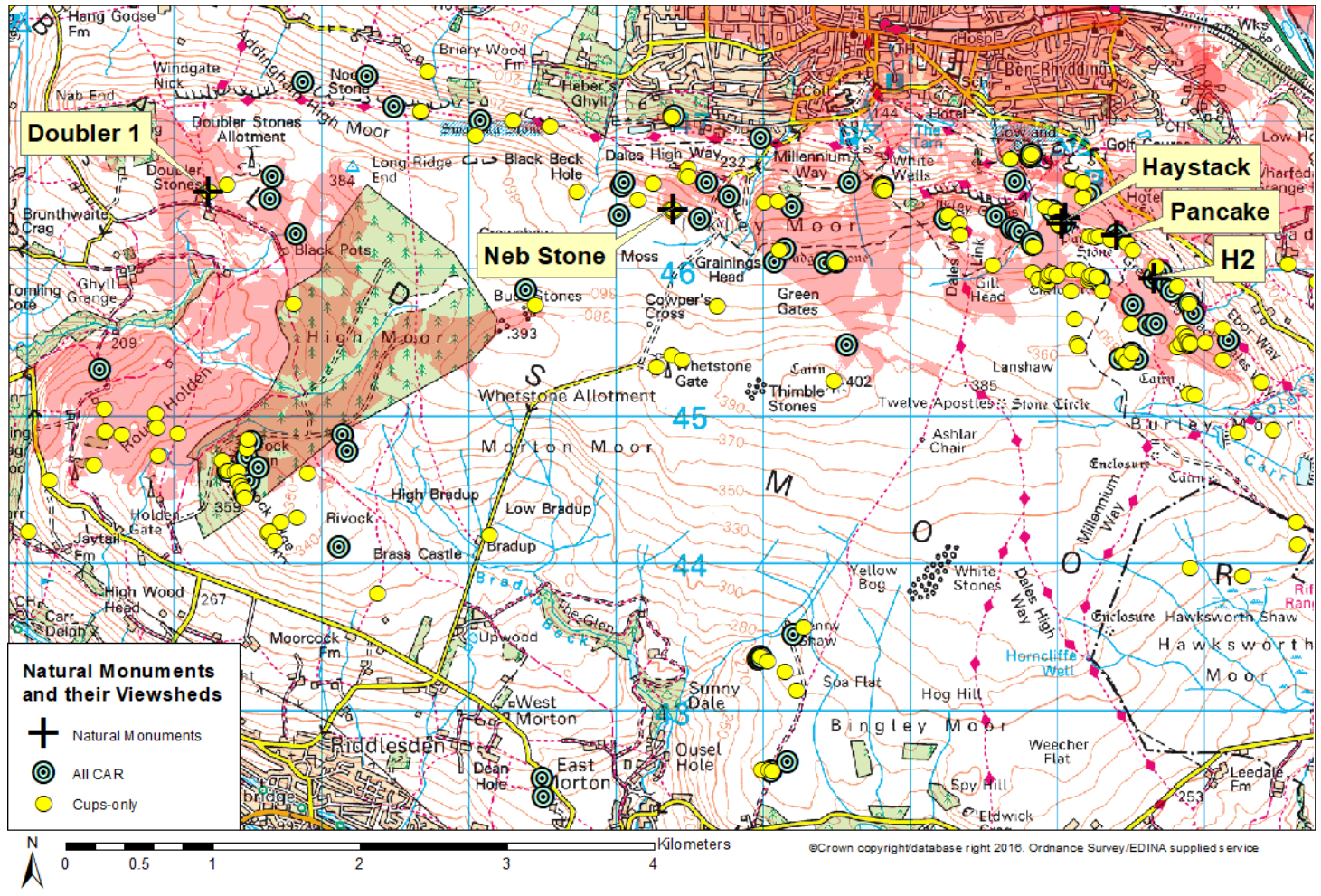


Fig 54 Distribution of sites and motifs on Rombalds Moor, with proposed natural monuments and their viewsheds. Viewsheds of all natural monuments: visible areas shown in red. p181

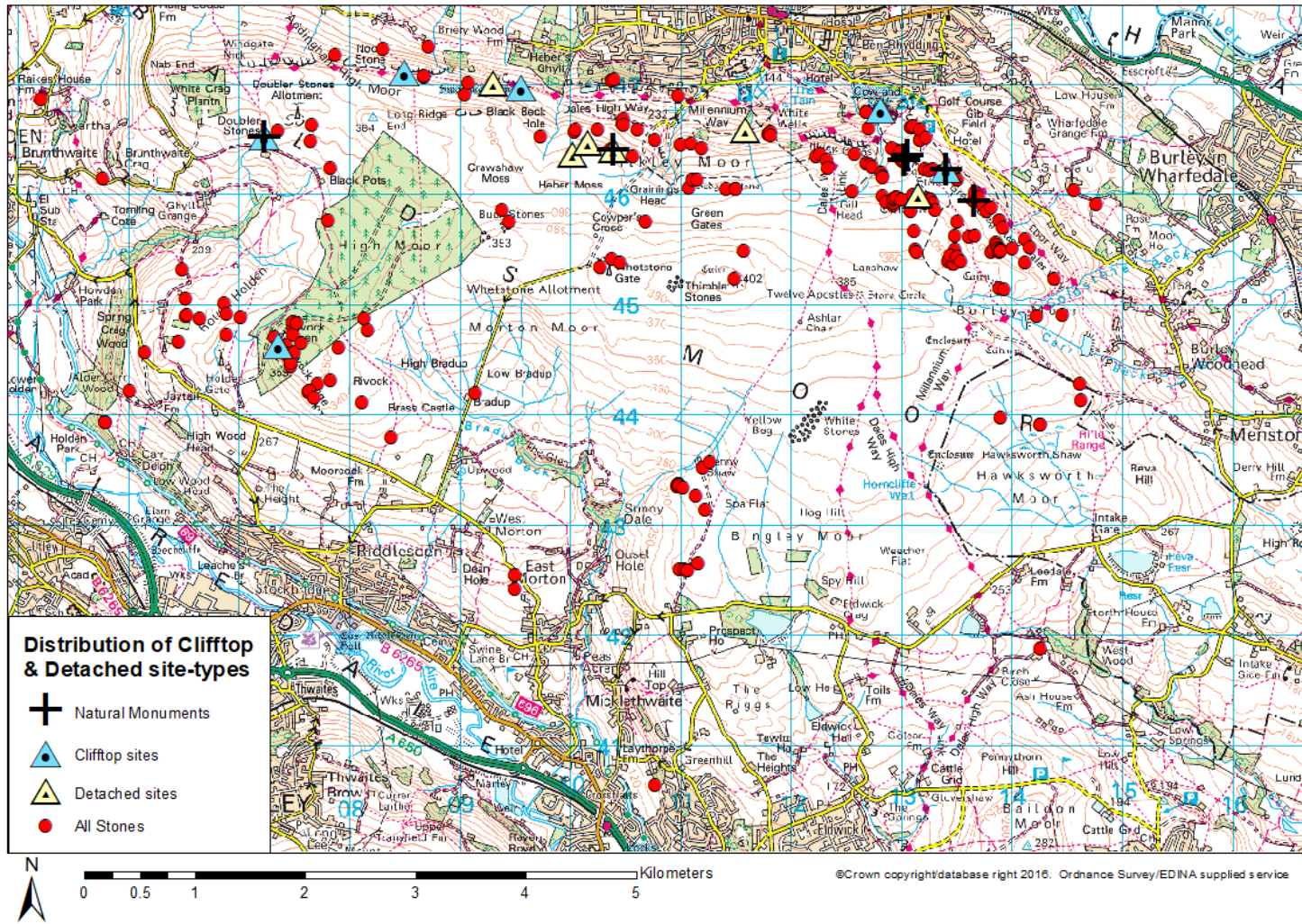


Fig 57 Distribution of cliff-top and detached site-types. p189



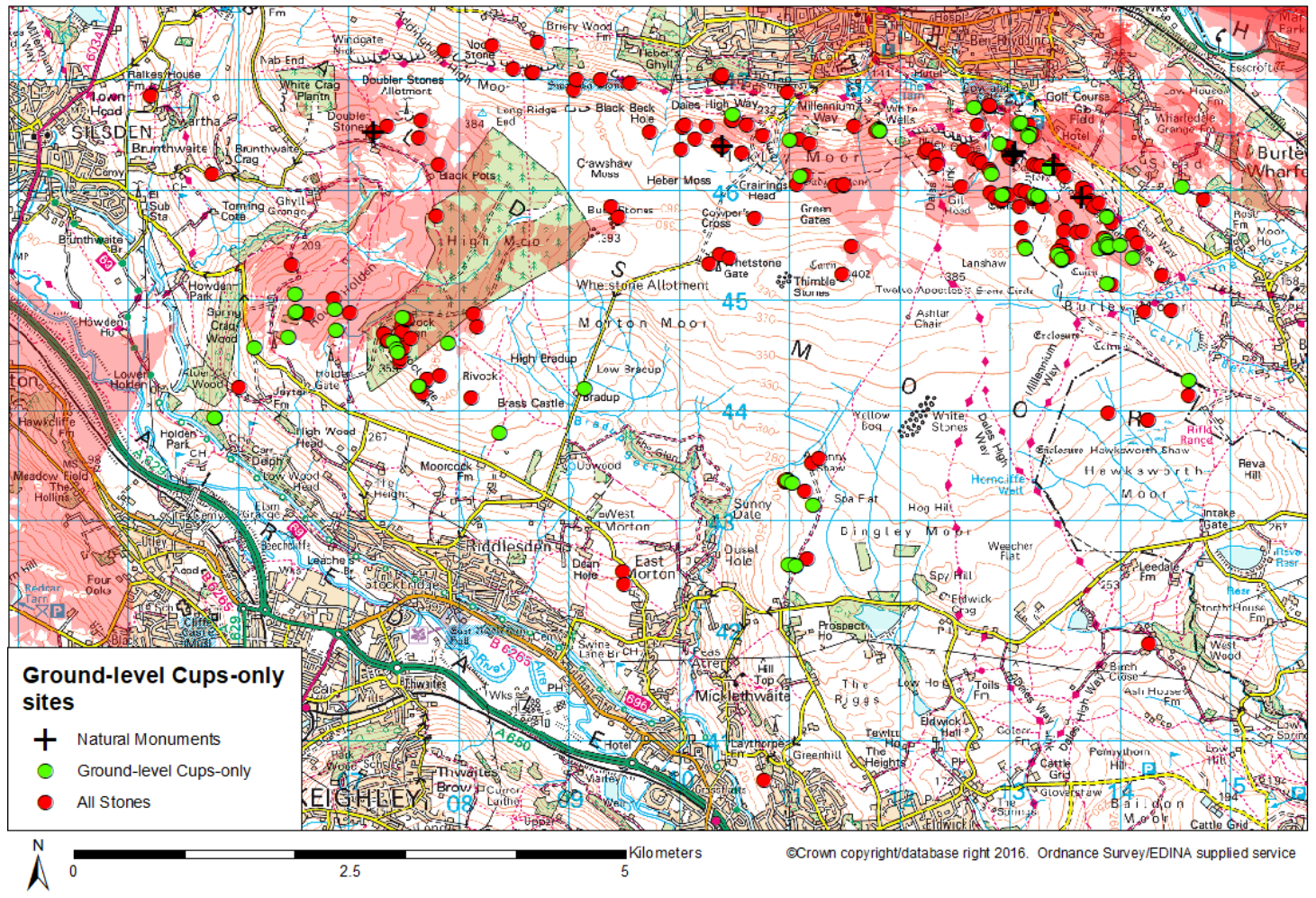
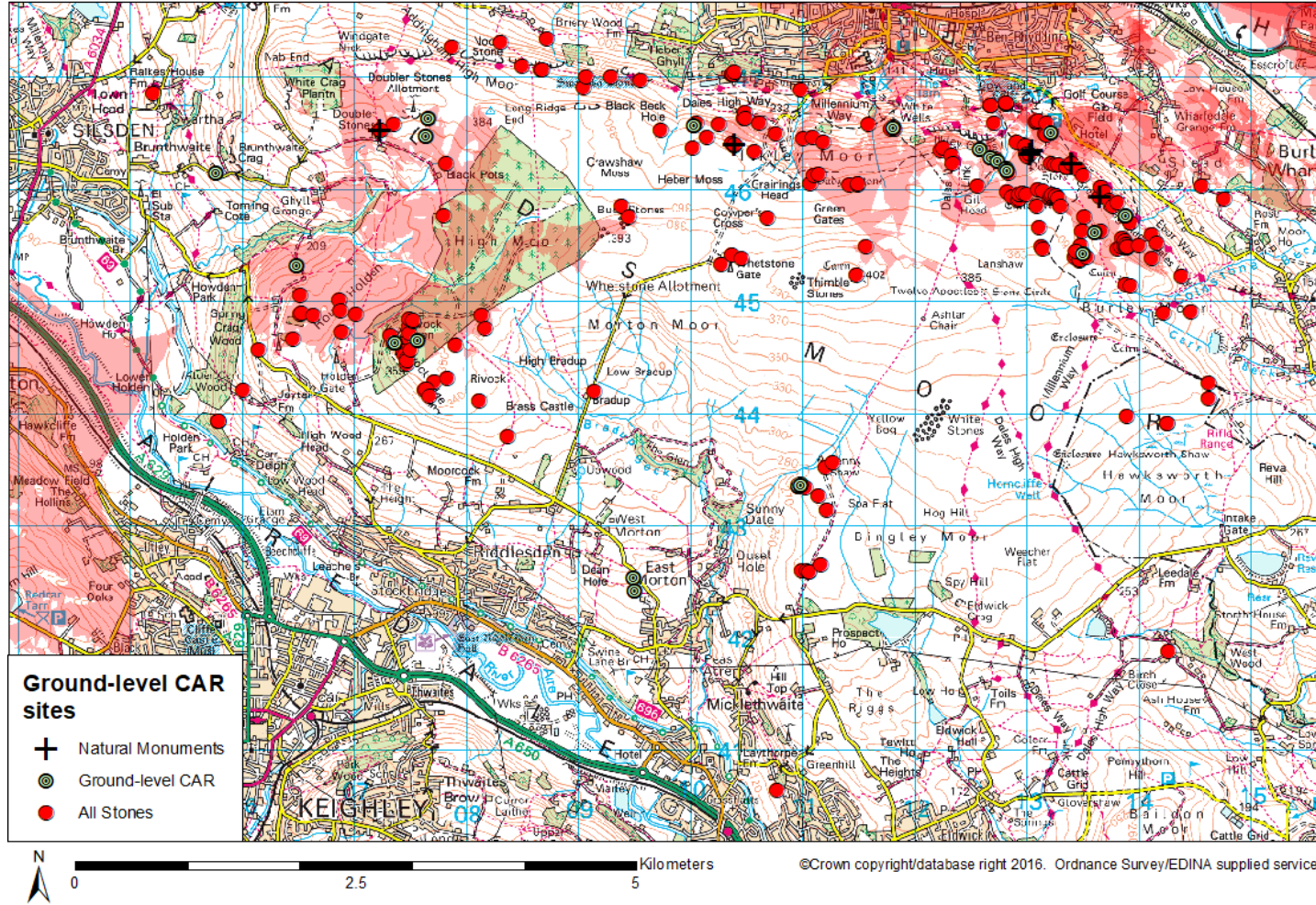
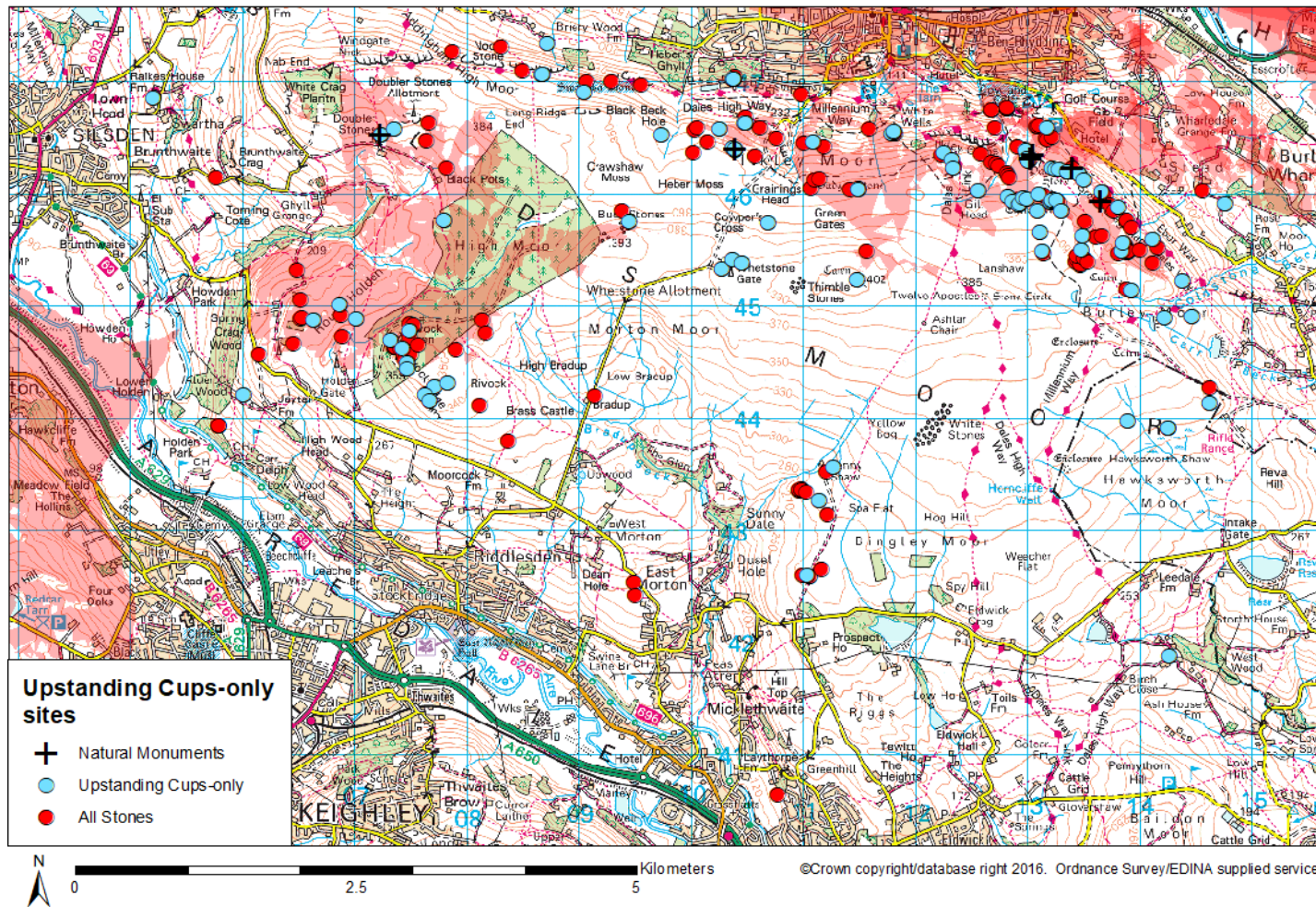


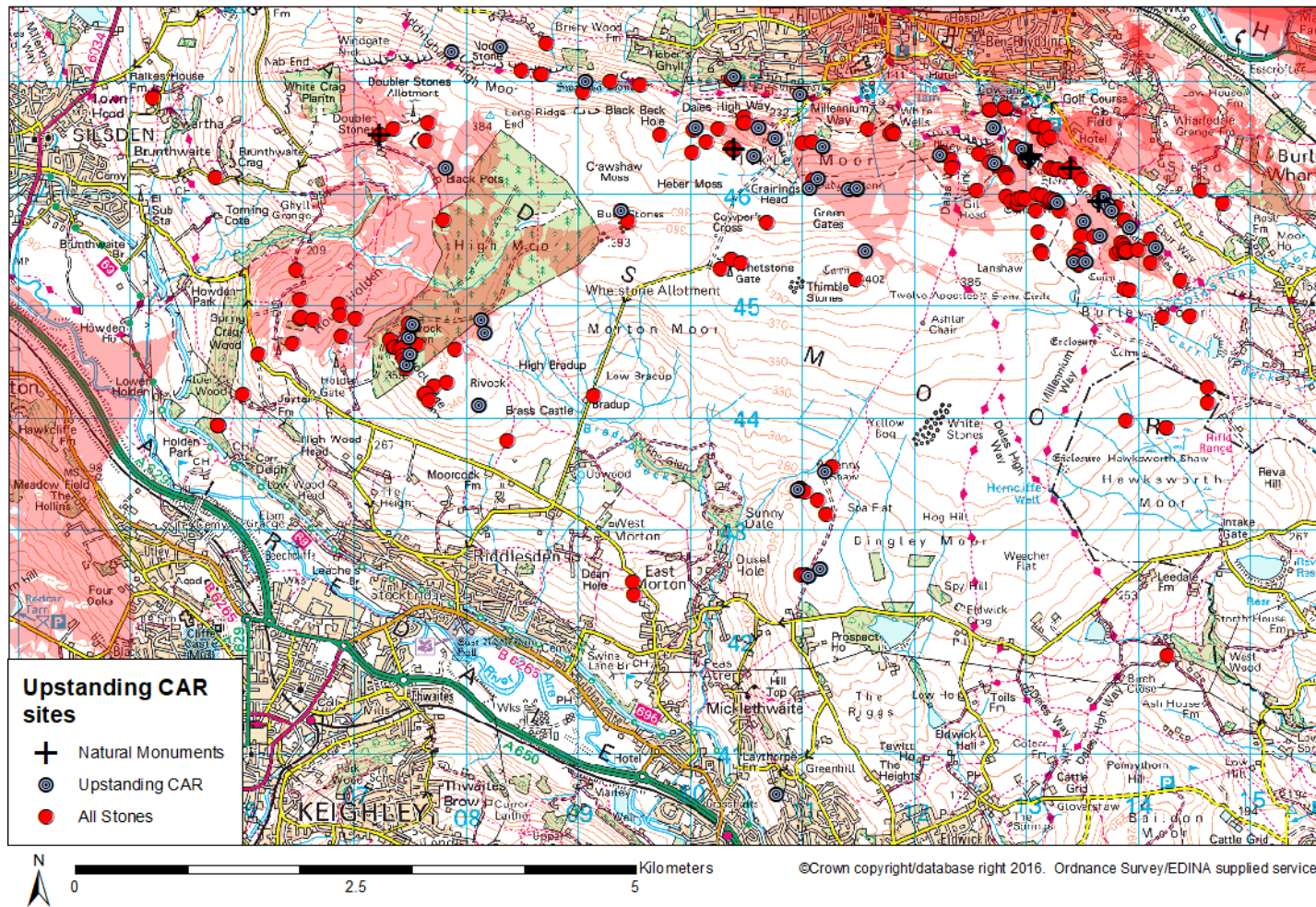
Fig 58 Distribution of ground-level and upstanding site-types and motifs: Top left: Distribution of ground-level sites, cups-only. Viewsheds of all natural monuments: visible areas shown in red. p192



**Fig 58** Distribution of ground-level and upstanding site-types and motifs: **Bottom left: Distribution of ground-level sites, cup-and-rings. Viewsheds of all natural monuments: visible areas shown in red. p192**



**Fig 58** Distribution of ground-level and upstanding site-types and motifs: Top right: Distribution of upstanding sites, cups-only. Viewsheds of all natural monuments: visible areas shown in red. p193



**Fig 58** Distribution of ground-level and upstanding site-types and motifs: **Bottom right: Distribution of upstanding sites, cup-and-rings.** Viewsheds of all natural monuments: visible areas shown in red. p193

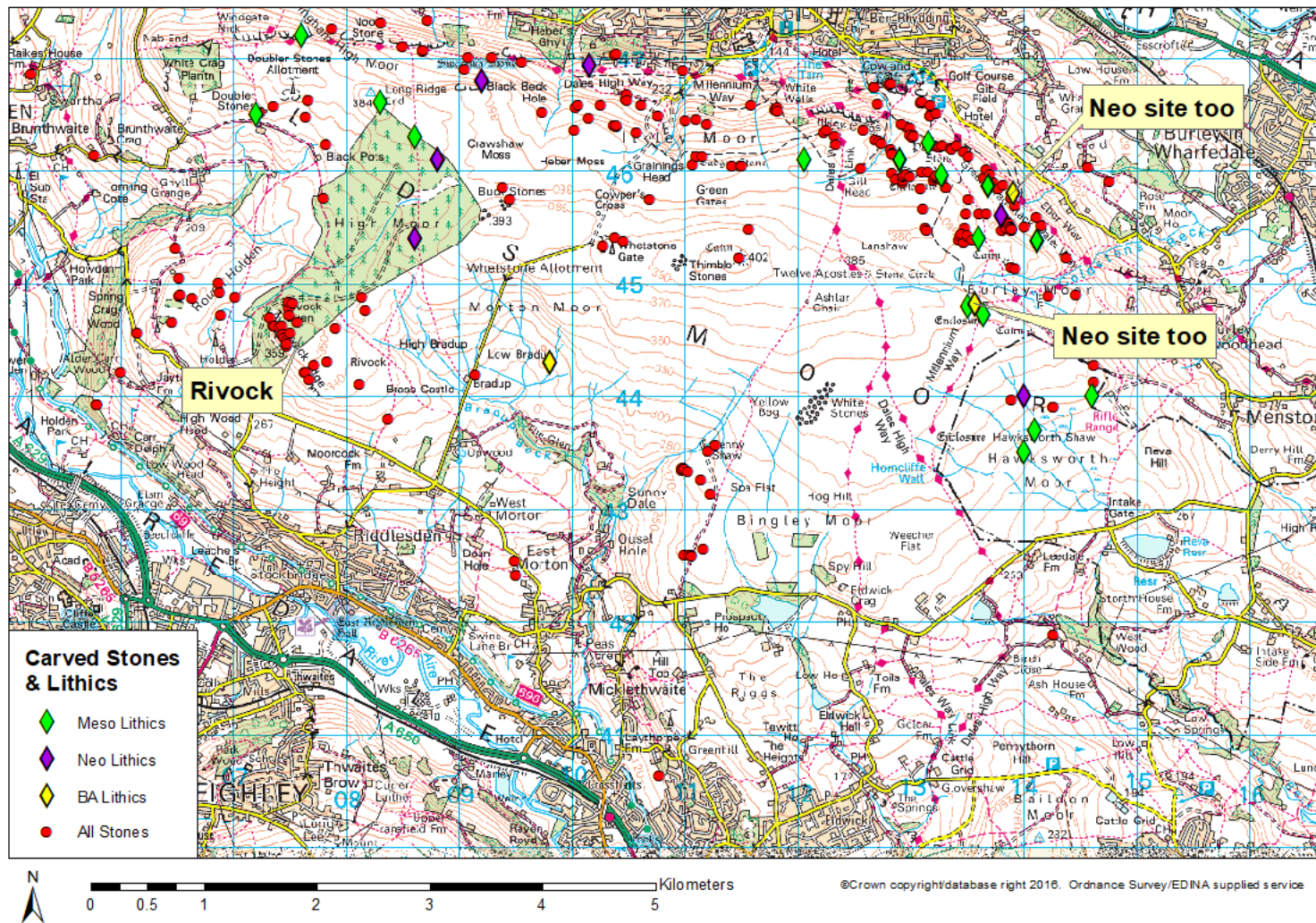


Fig 59 Carved stones and lithics: the whole Moor. p199

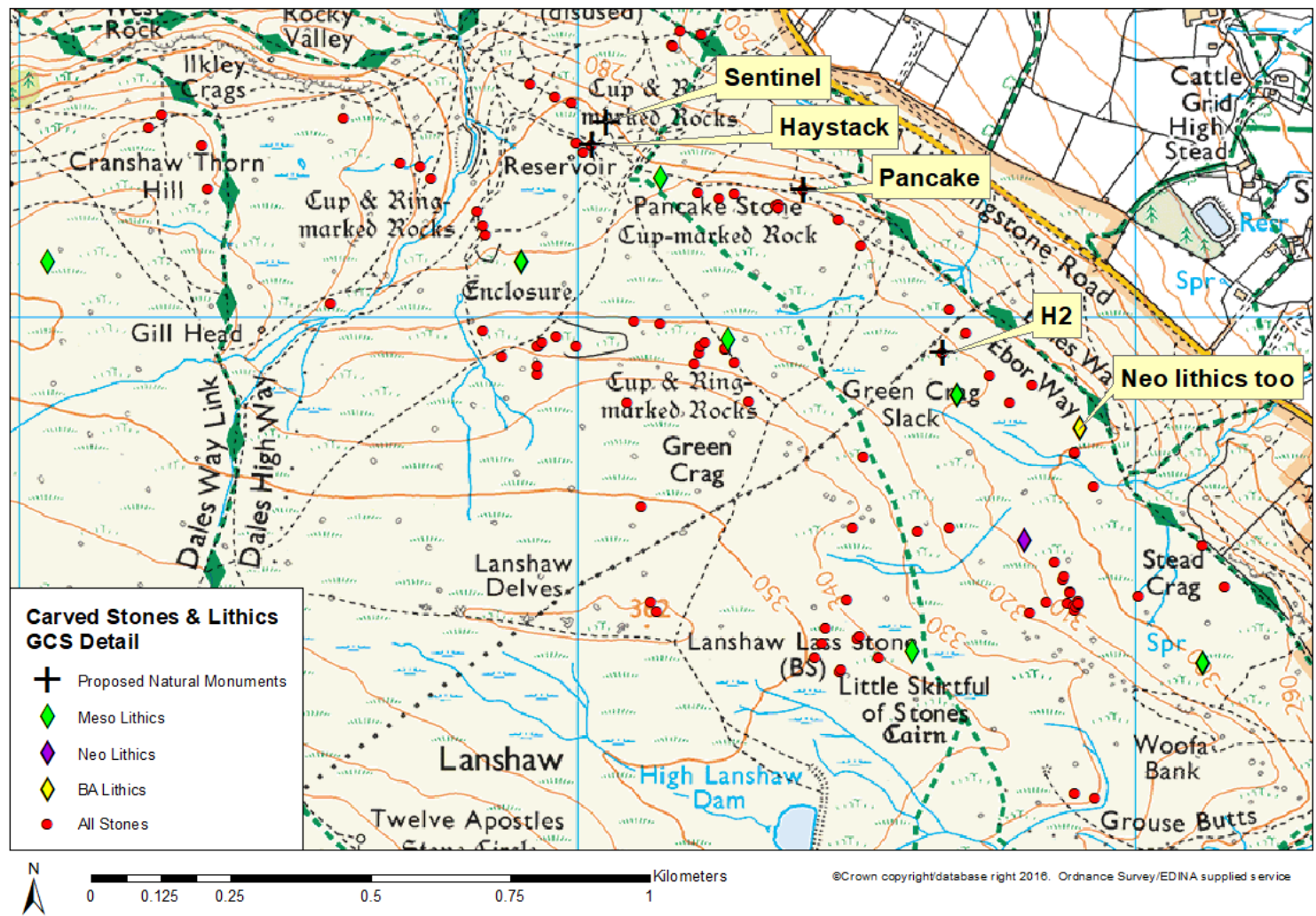


Fig 60 Carved stones and lithics: Green Crag Slack detail. p200

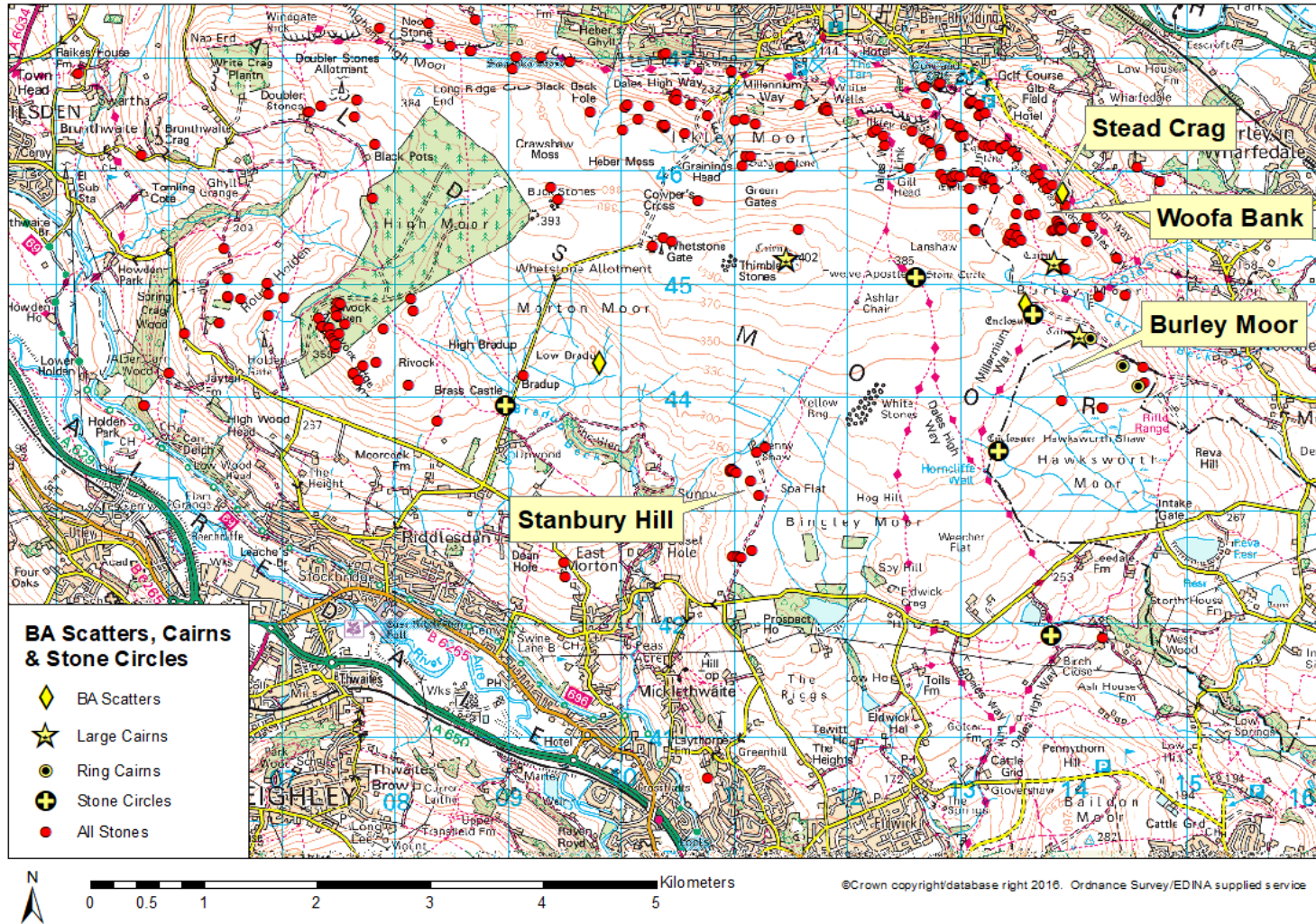


Fig 61 Cairns, stone circles and the approximate centres of the four major cairnfields. p202

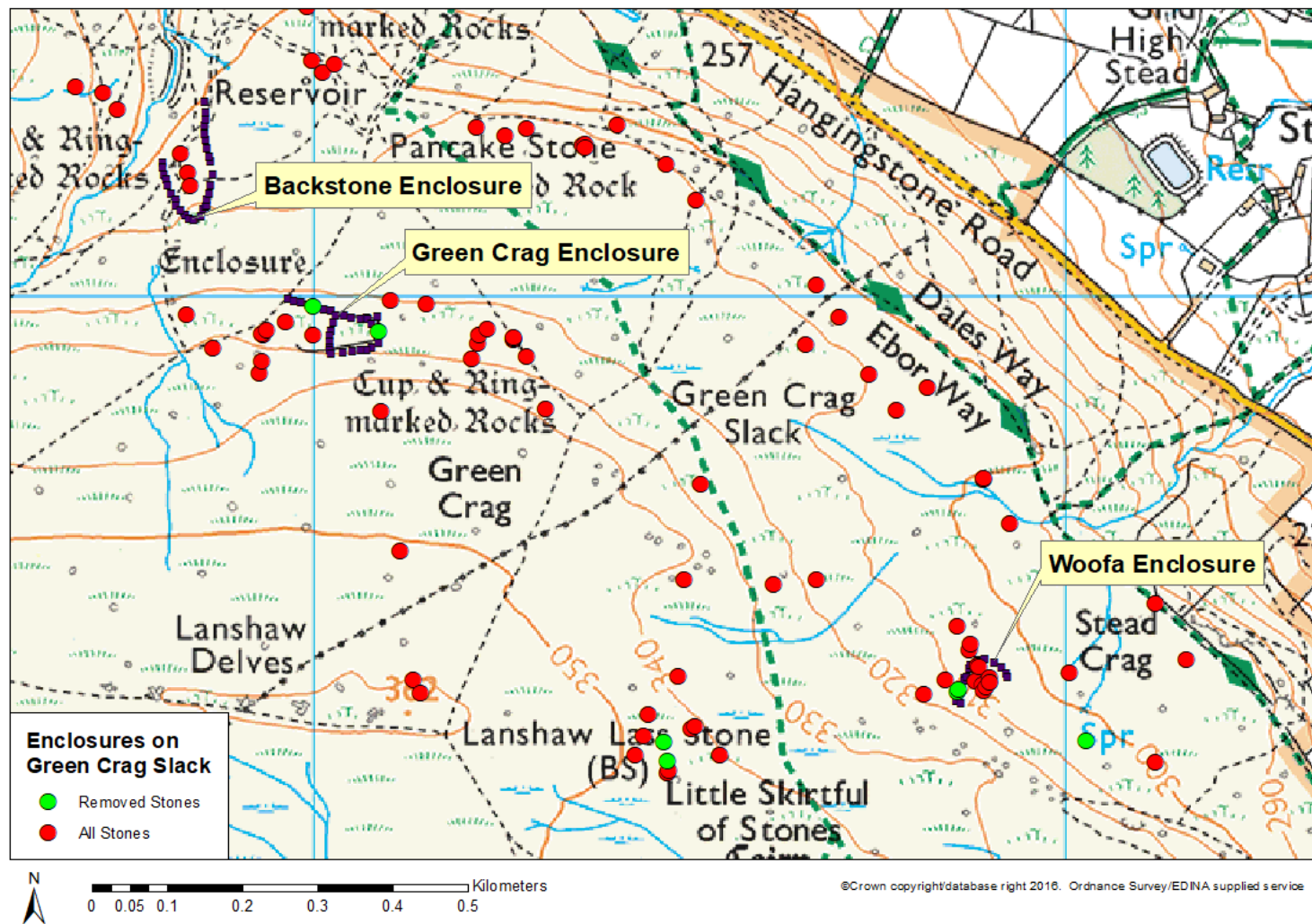


Fig 62 The three enclosures of Green Crag Slack. p205



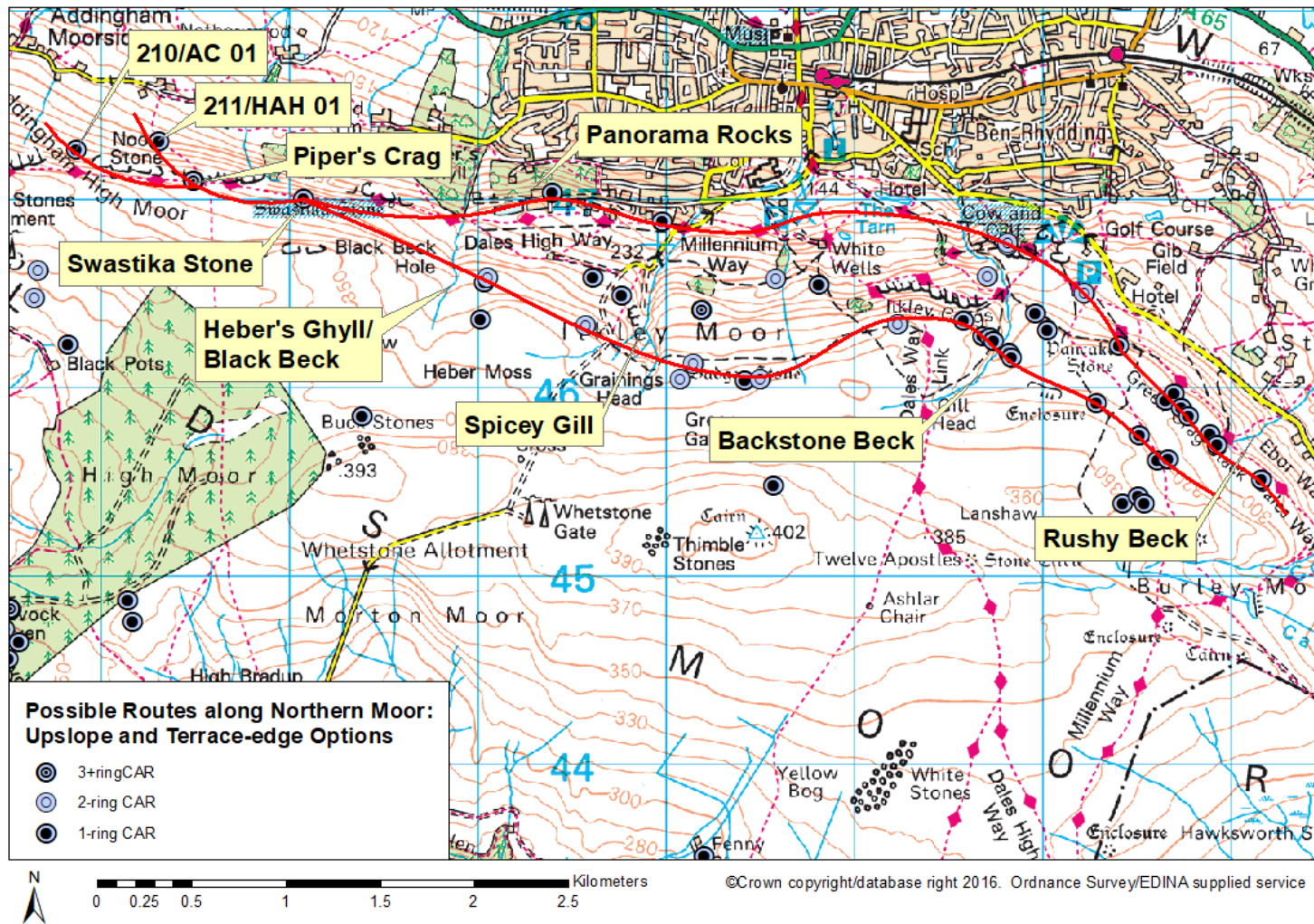


Fig 64 Possible northern routeways. p209

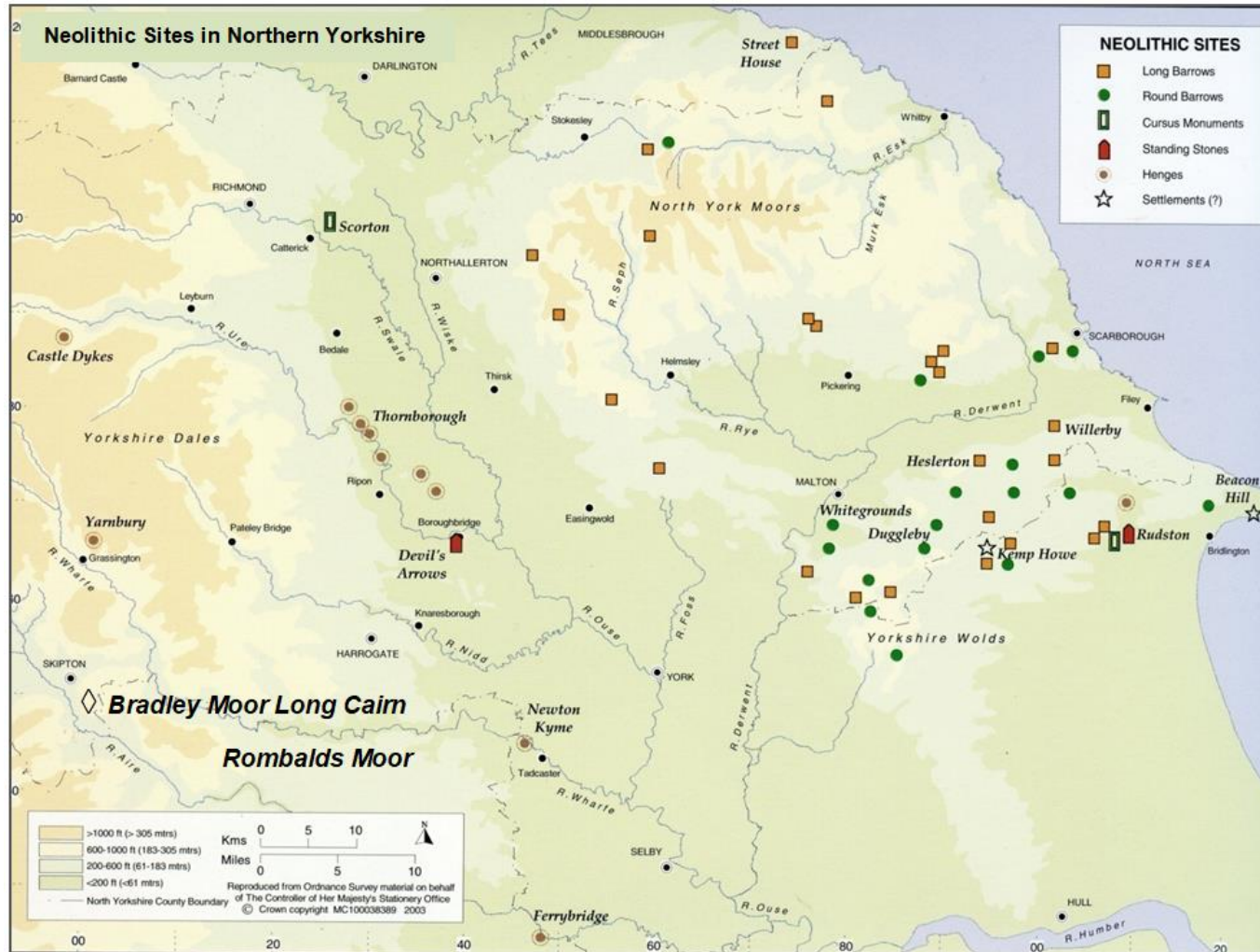


Fig 65 Neolithic sites in northern Yorkshire. Image: adapted from illustration by Nick Staley, p 38, in Harding (2003). p210

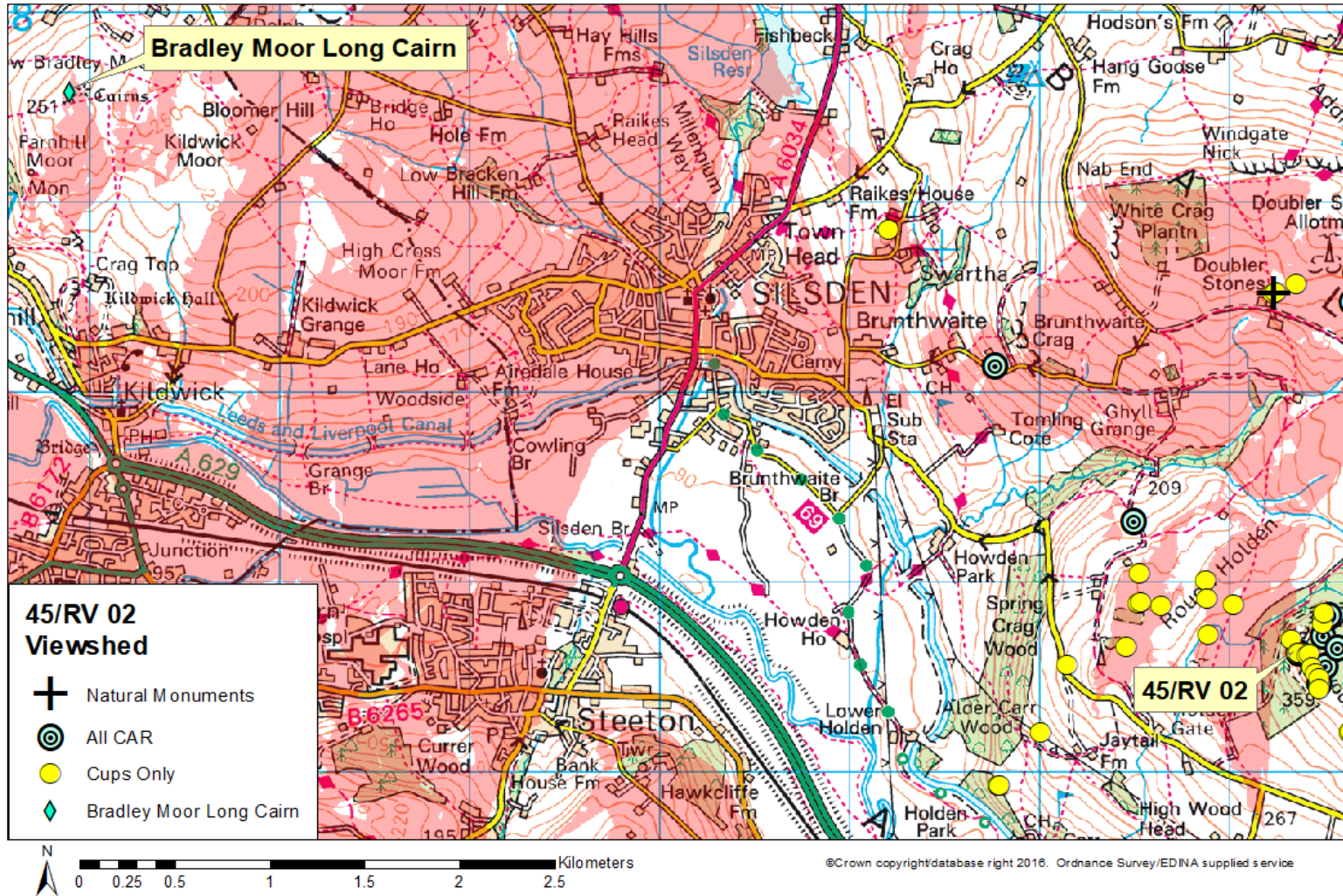


Fig 66 The viewshed of 45/RV 02. Visible area shown in red. p211

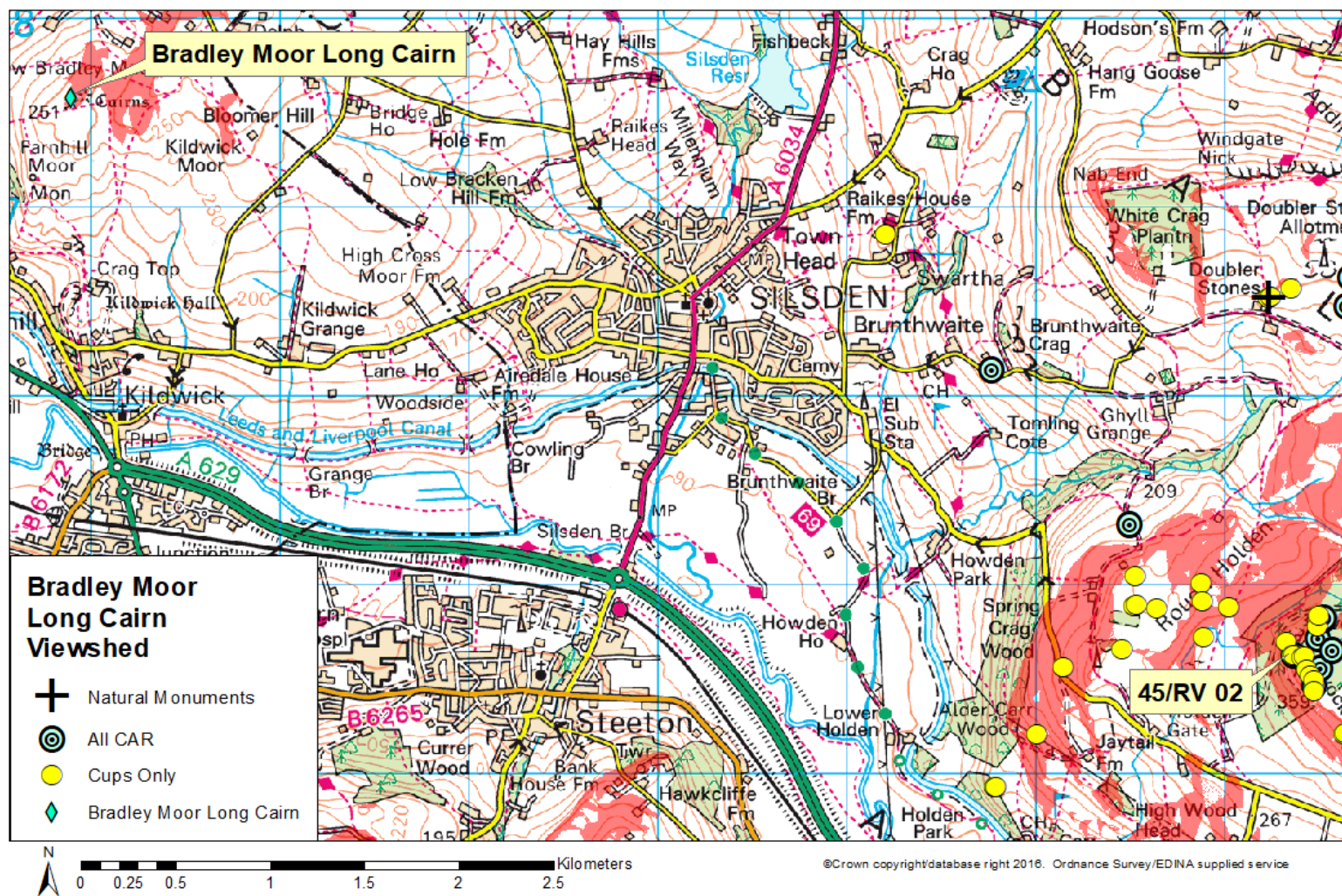


Fig 67 Part of the viewshed of Bradley Moor Long Cairn. Visible area shown in red. p212

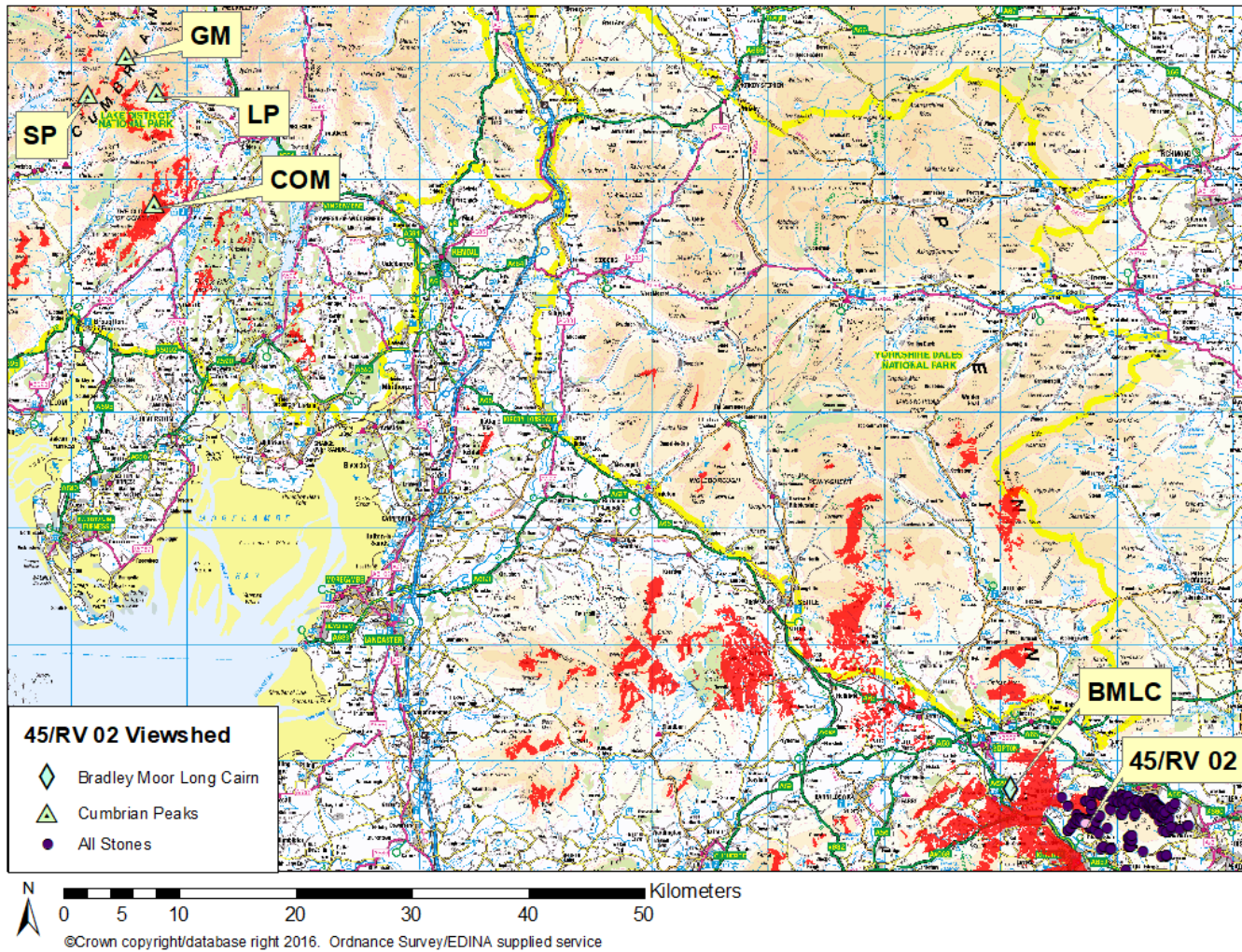


Fig 68 (TOP) Long-distance viewshed of 45/RV 02. Visible area shown in red. p213

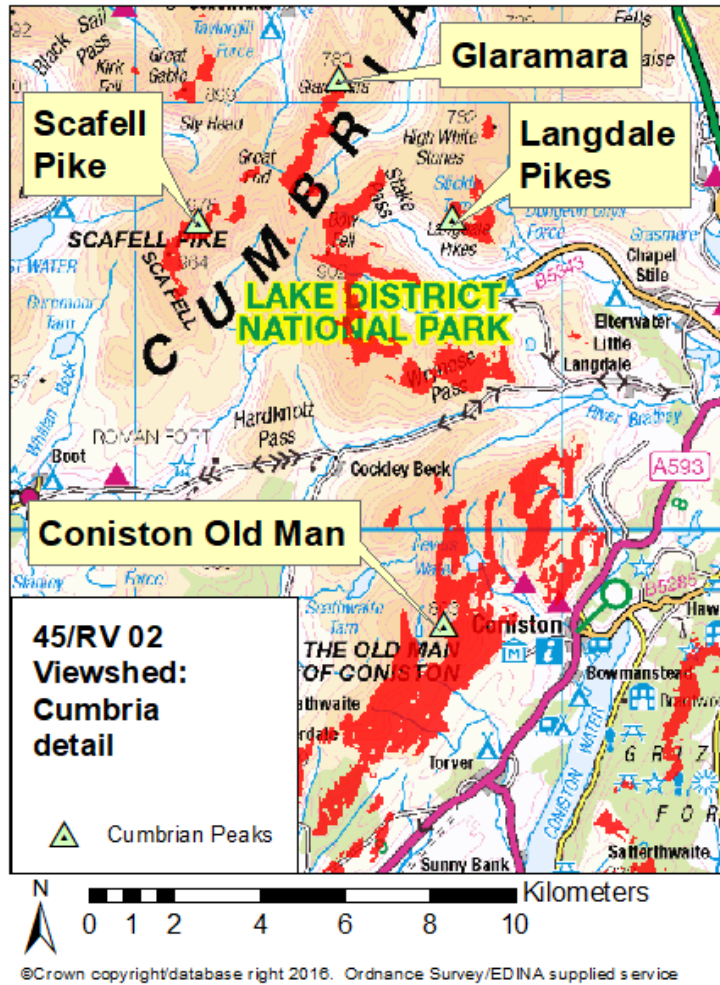


Fig 68 (BOTTOM) Long-distance viewshed of 45/RV 02, detail of furthest extent of 45's viewshed, just reaching all four peaks. Visible area shown in red. p213

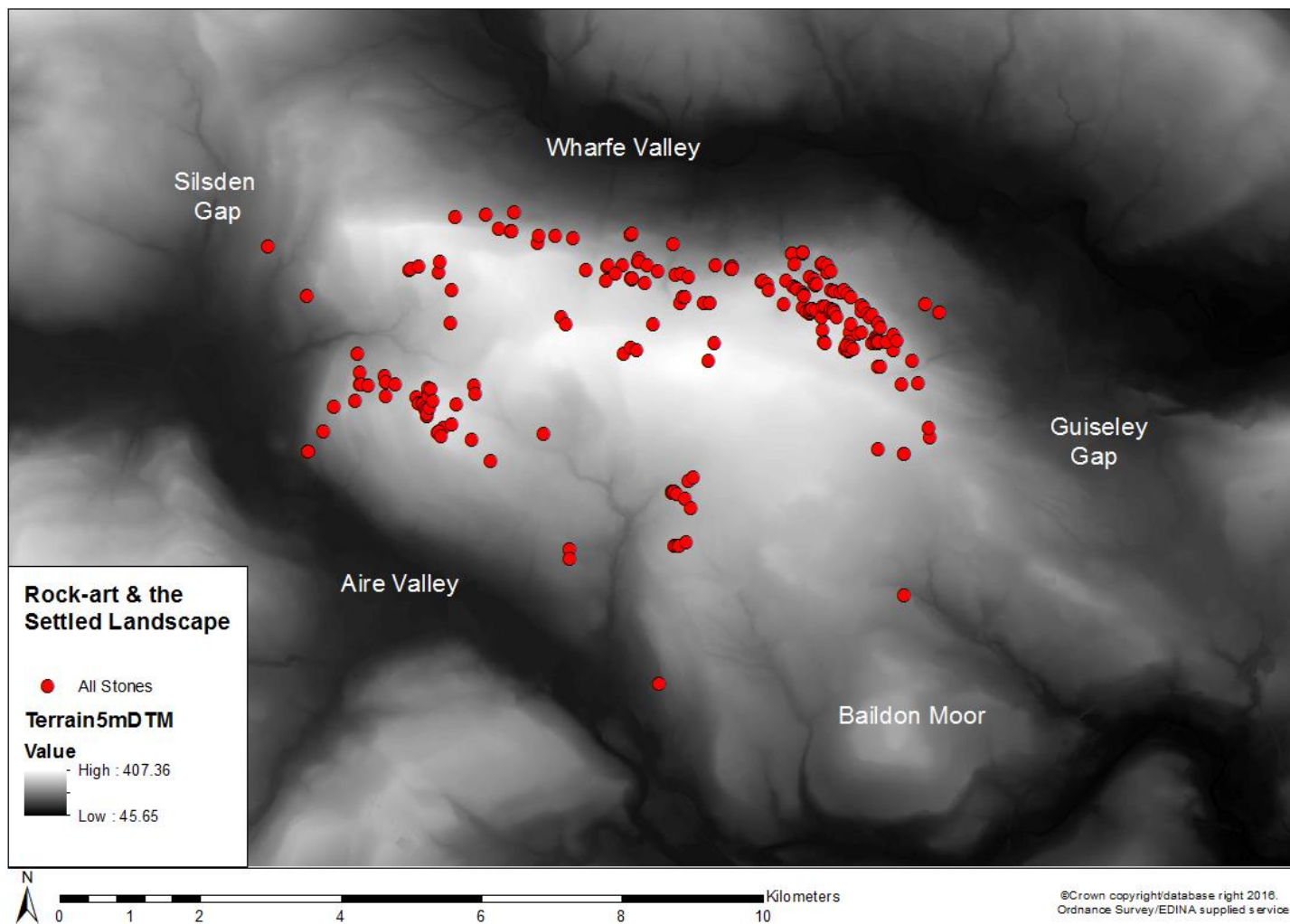


Fig 69 Rock-art and the settled landscape. p216

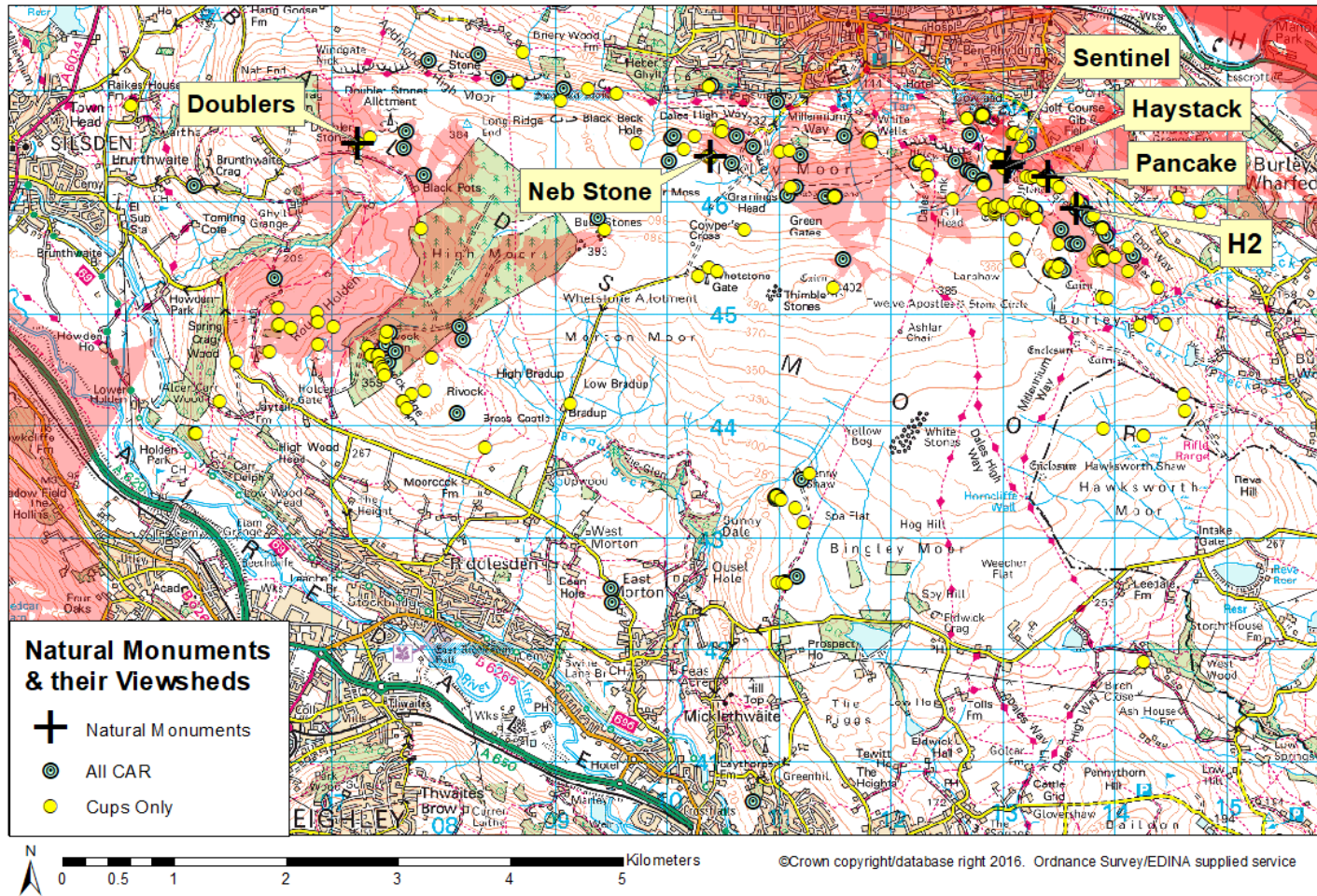


Fig 71 The proposed natural monuments, the Sentinel and their cumulative viewsheds. Visible areas shown in red. p222



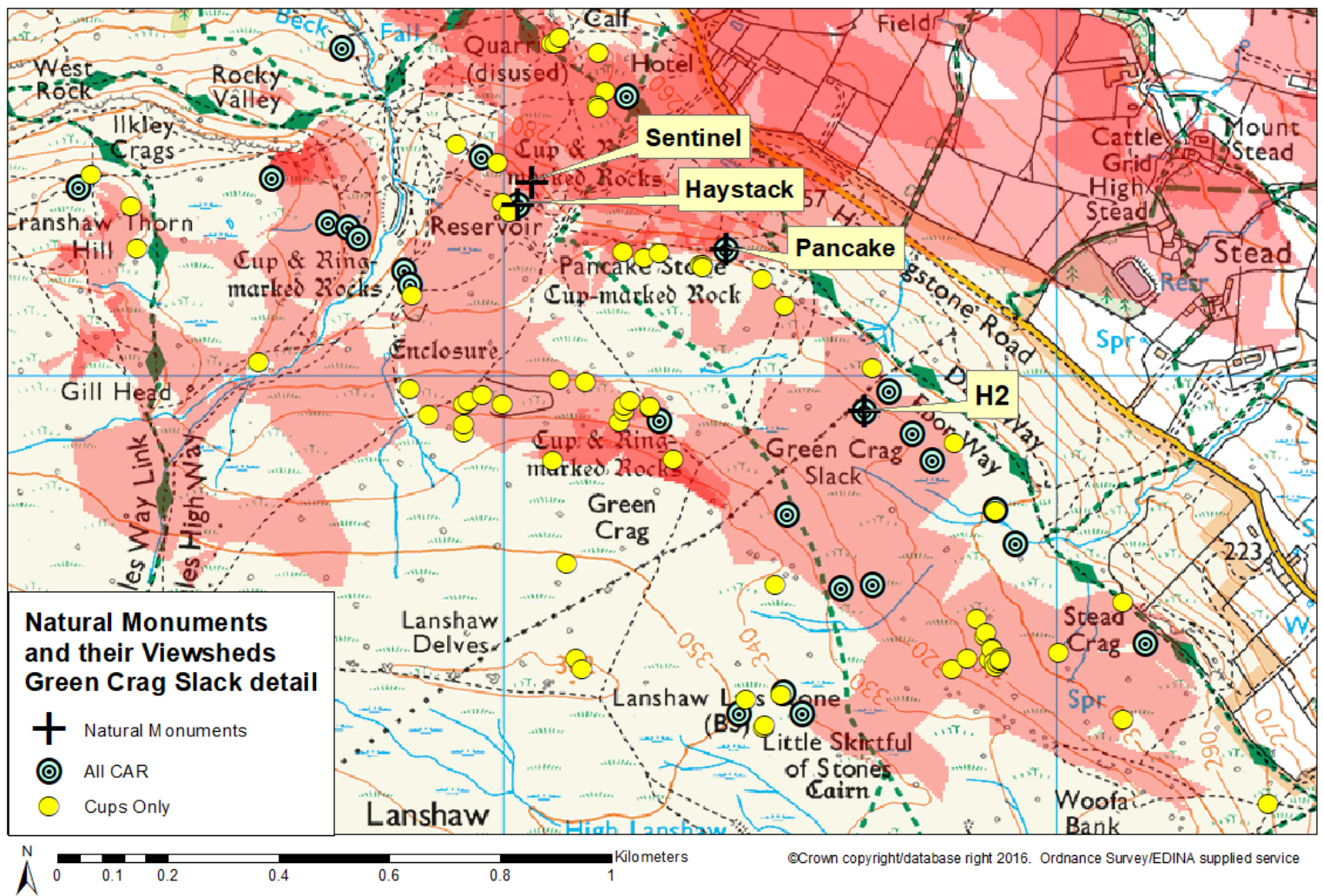


Fig 72 Proposed natural monuments, Sentinel, and their cumulative viewsheds: Green Crag Slack detail. Visible areas shown in red. p223

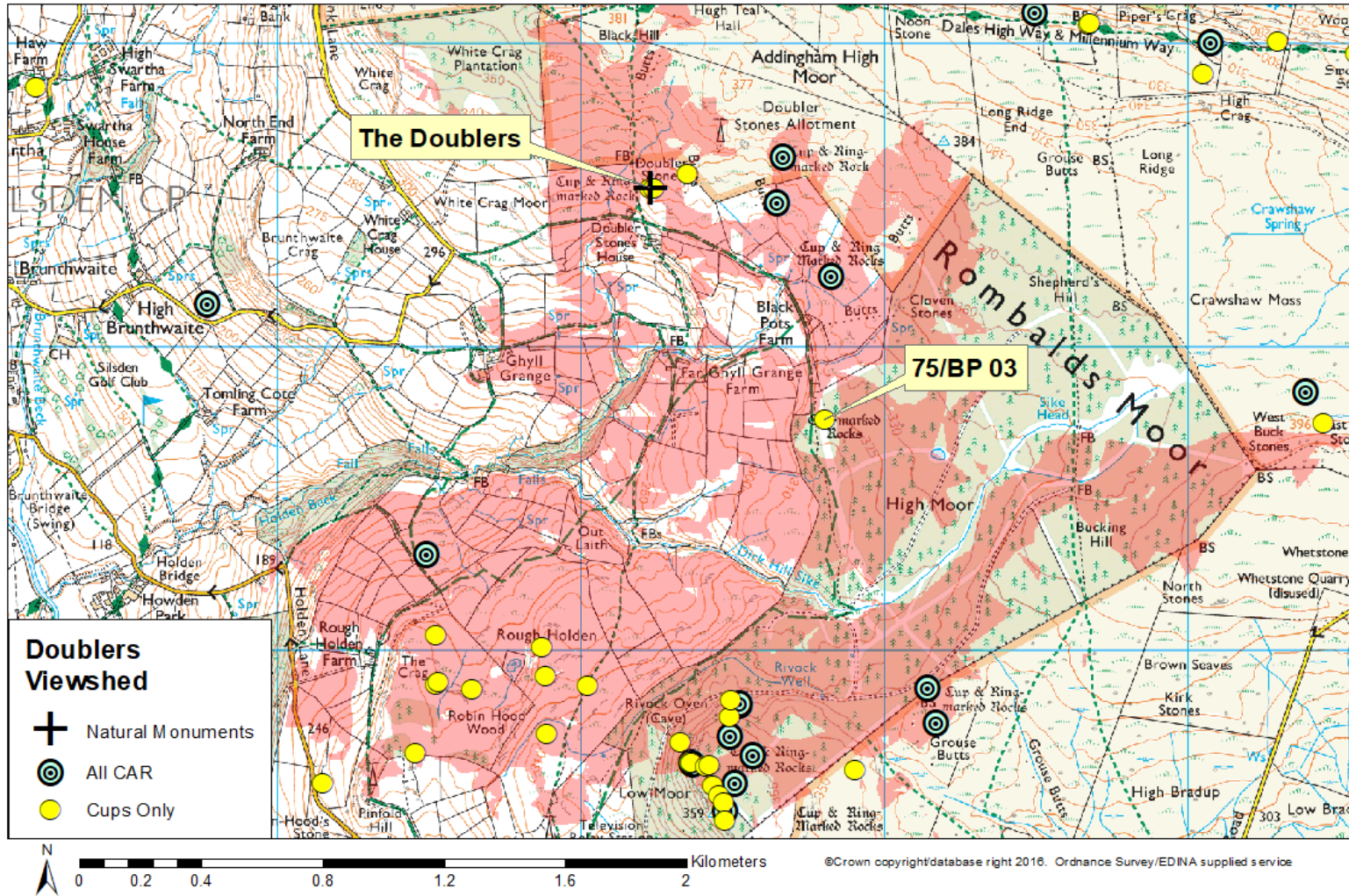


Fig 74 Viewshed of the Doublers. Visible area shown in red. p230

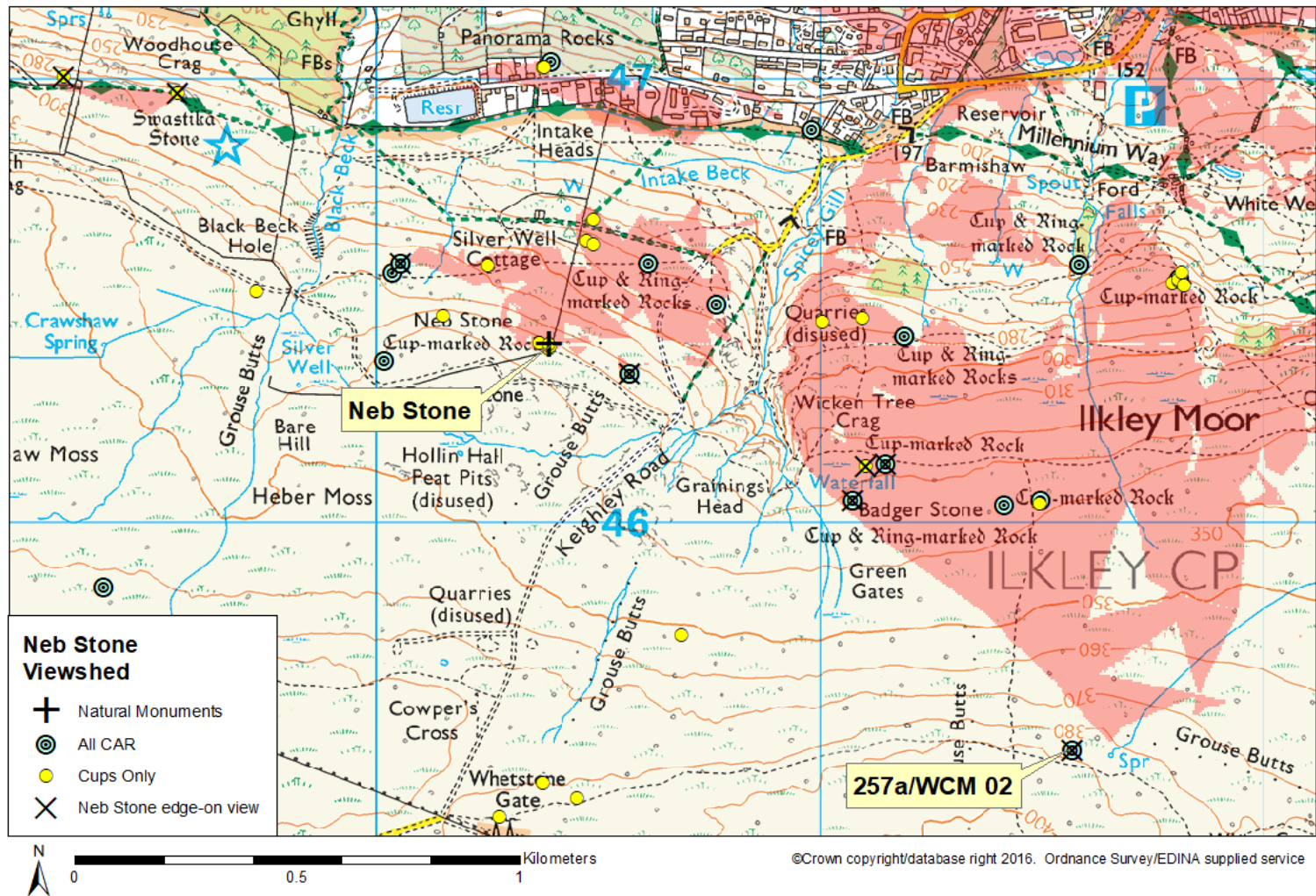


Fig 77 Viewshed of the Neb Stone. Visible area shown in red. p234

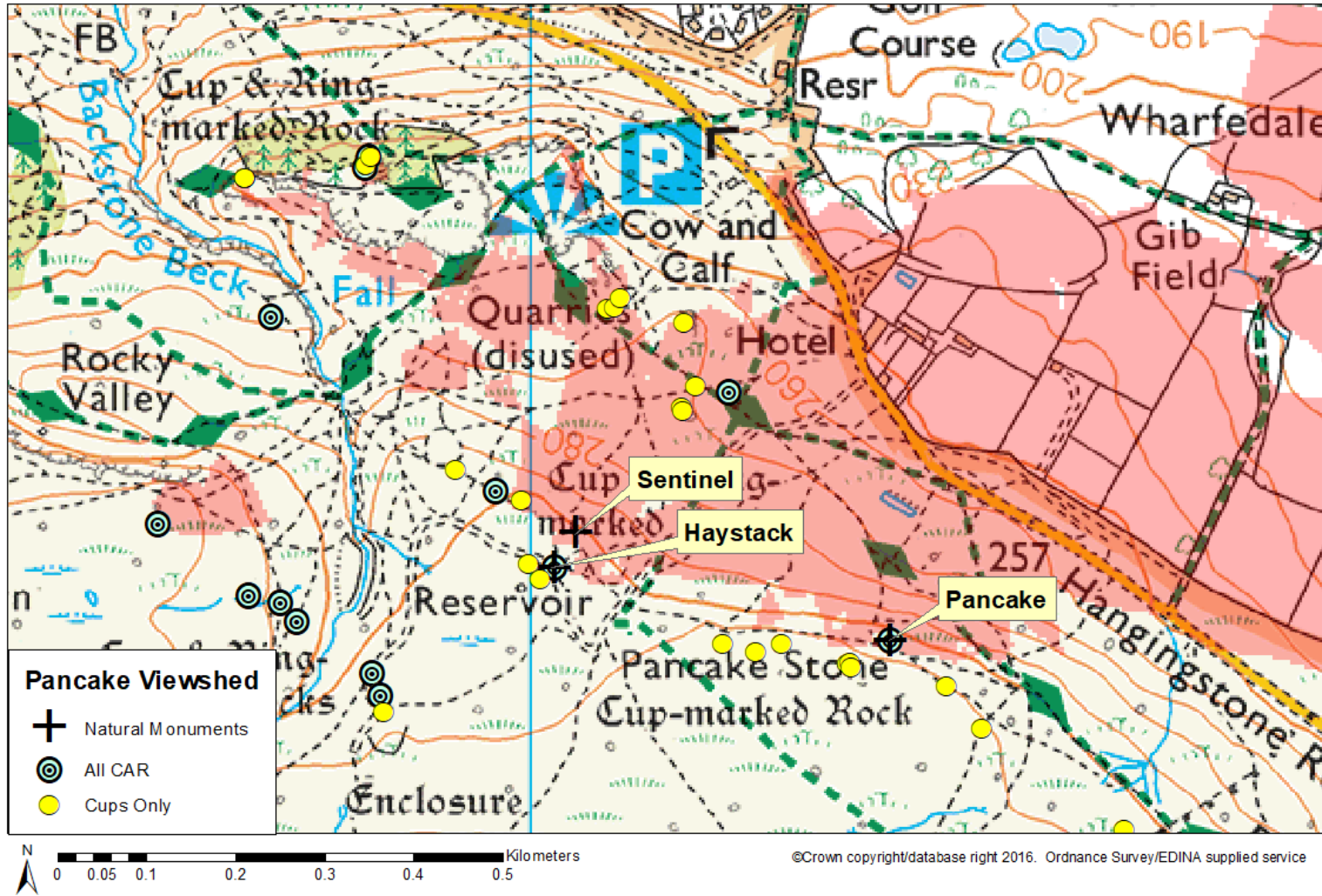


Fig 81 Viewshed of 332/PST 01 the Pancake. Visible area shown in red. p239

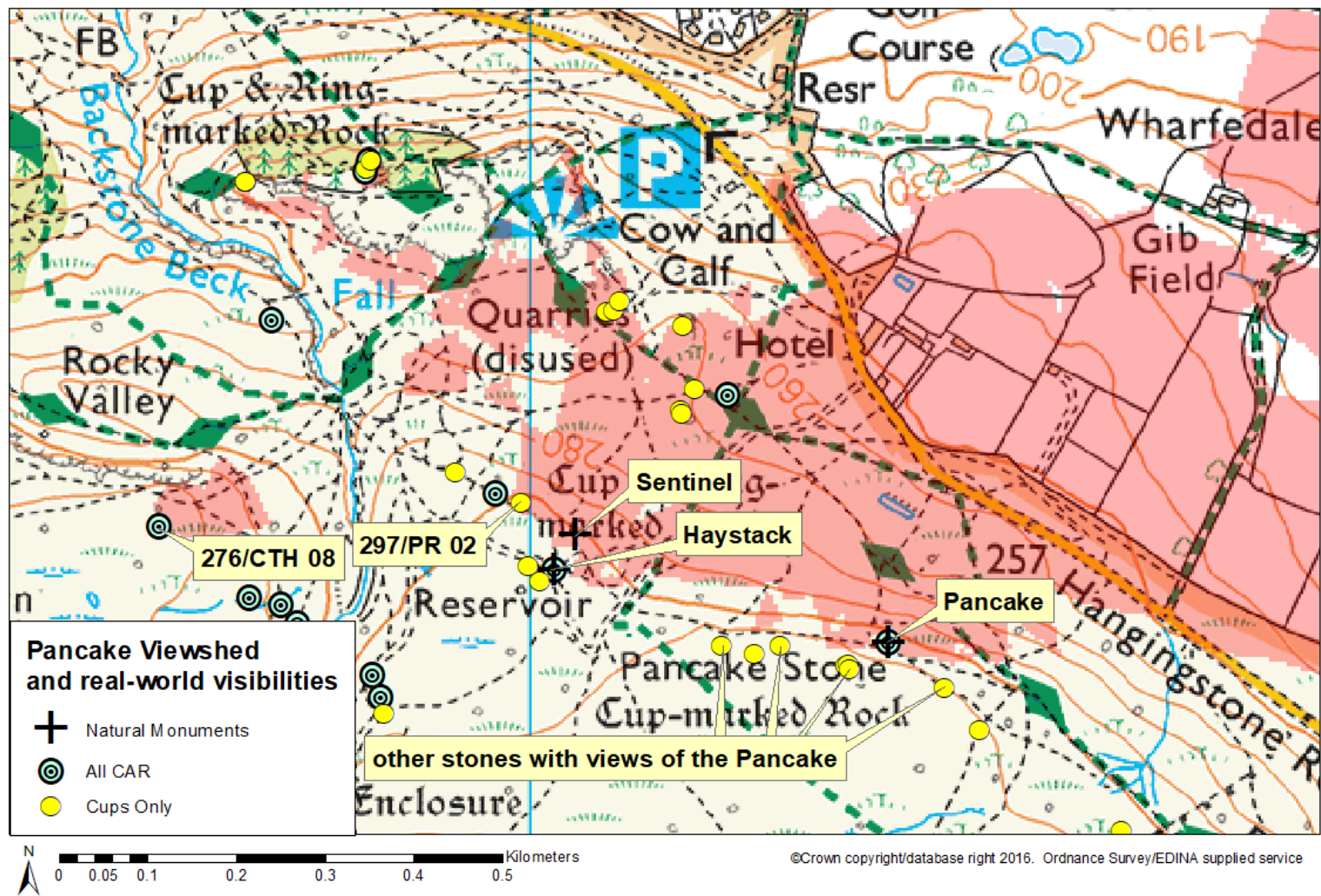


Fig 83 Viewshed of the Pancake, compared with real-world visibilities. Visible area shown in red. p241

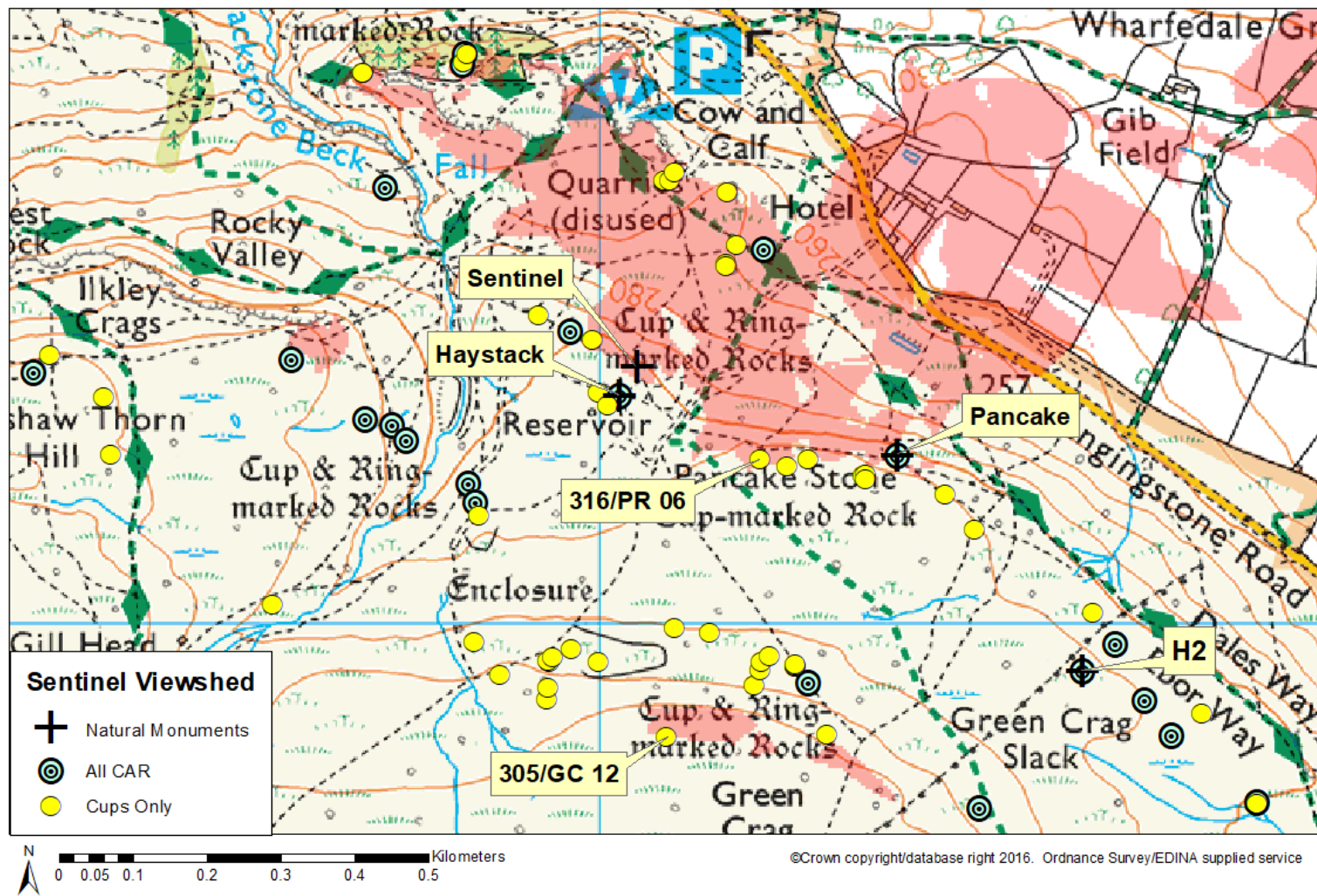


Fig 85 Viewshed of the Sentinel. Visible area shown in red. p244

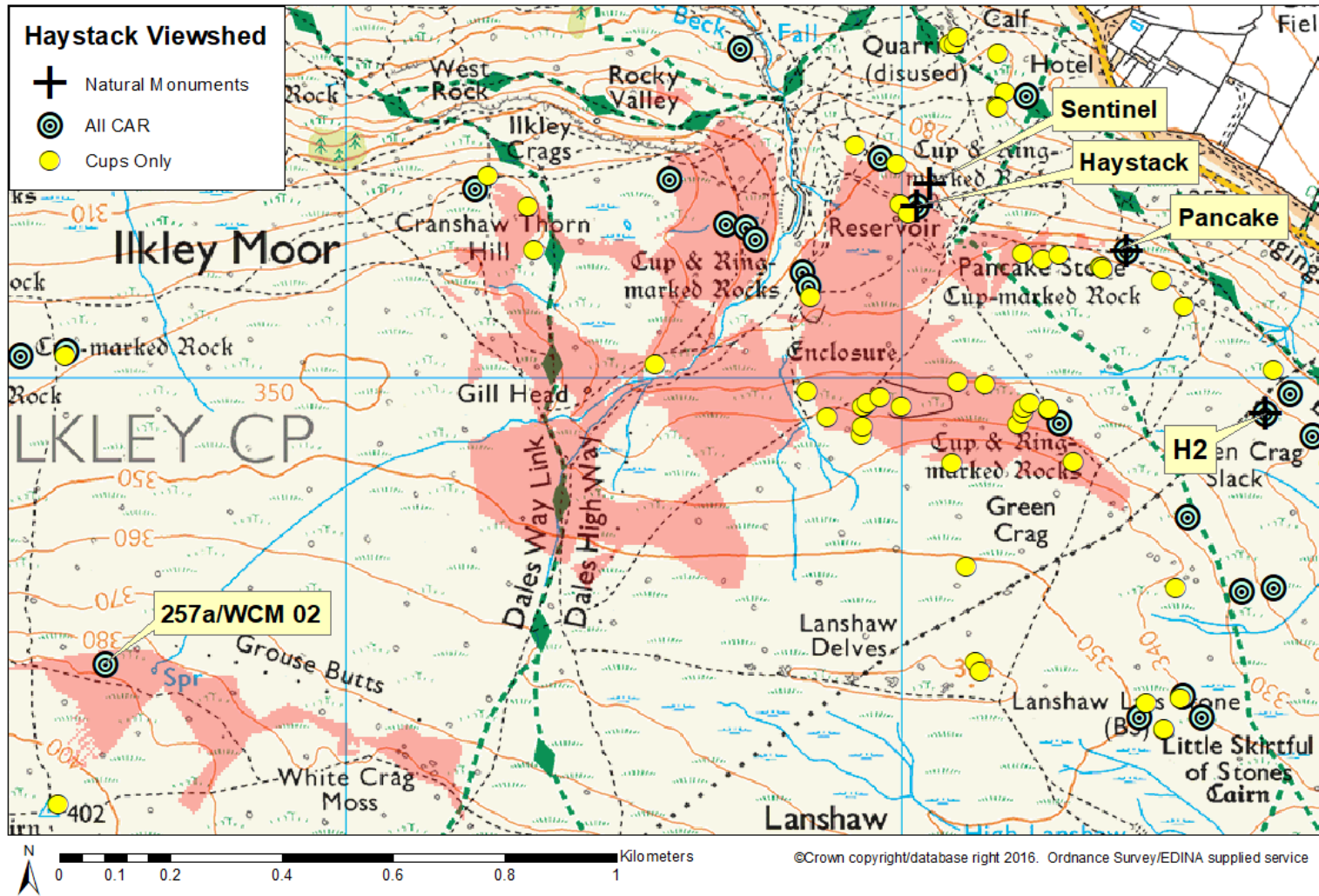


Fig 88 Viewshed of the Haystack. Visible area shown in red. p247

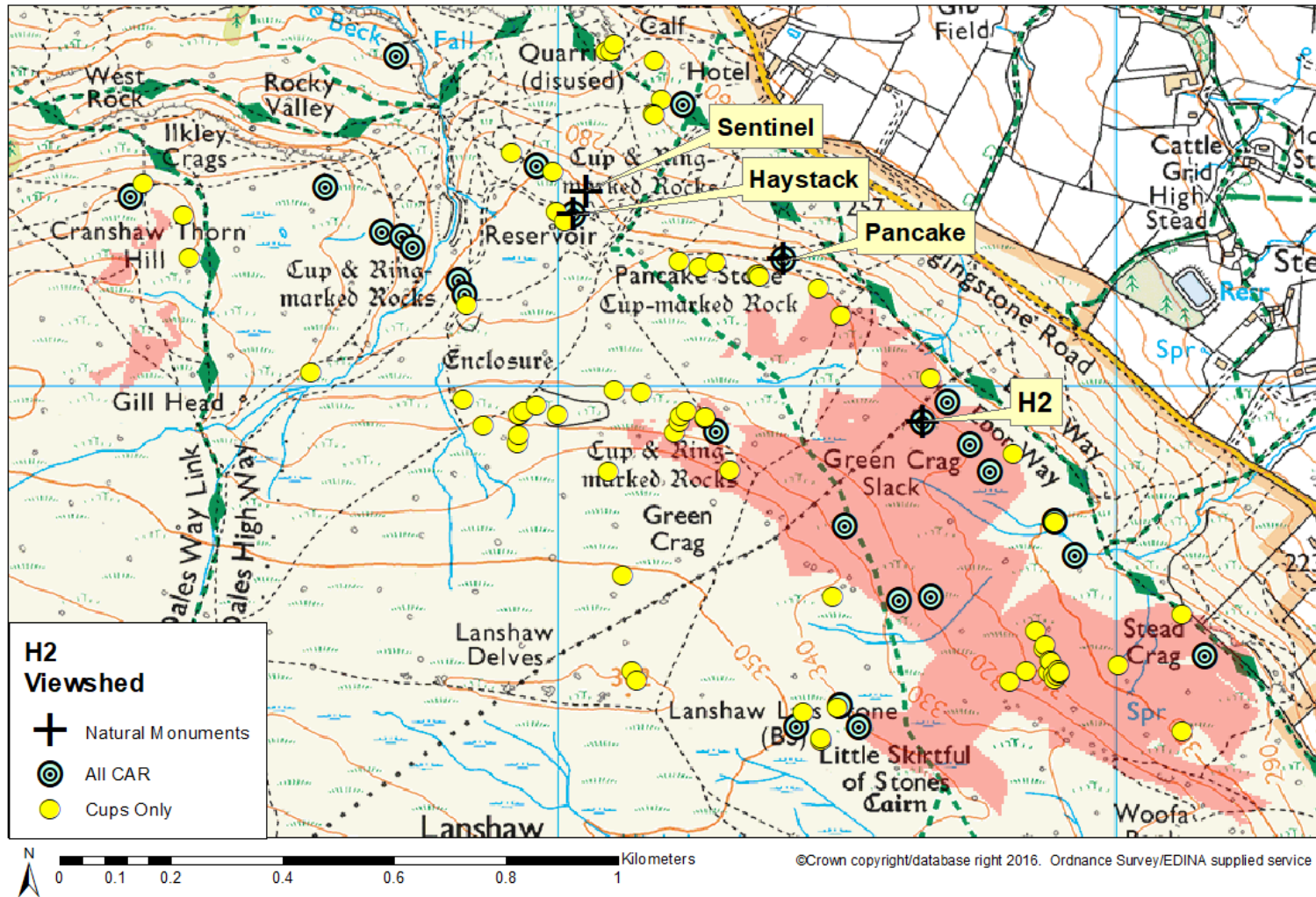


Fig 90 Viewshed of 355/GCS 13 H2. Visible area shown in red. p251



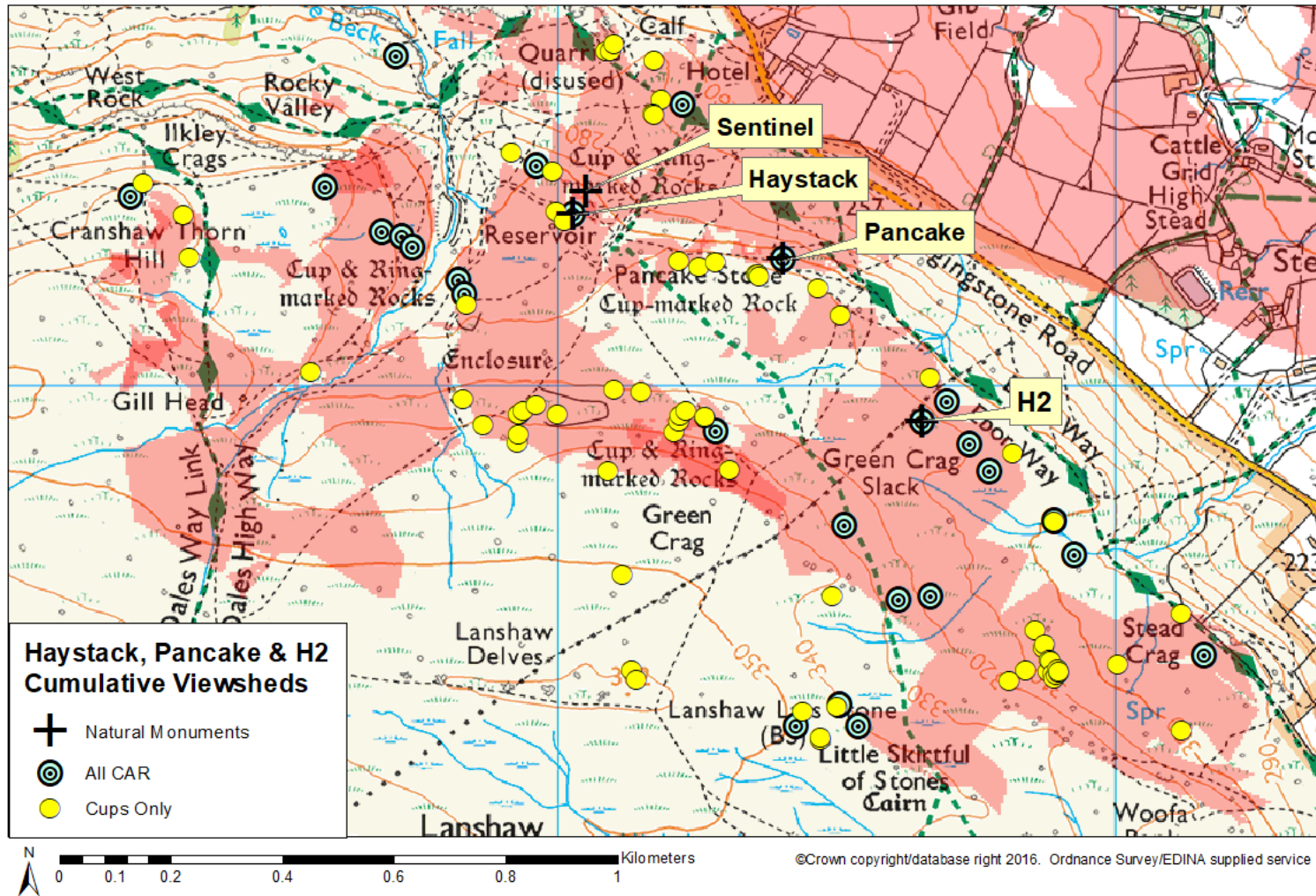


Fig 92 Cumulative viewshefts of the Haystack, the Pancake, and H2. Visible areas shown in red. p254

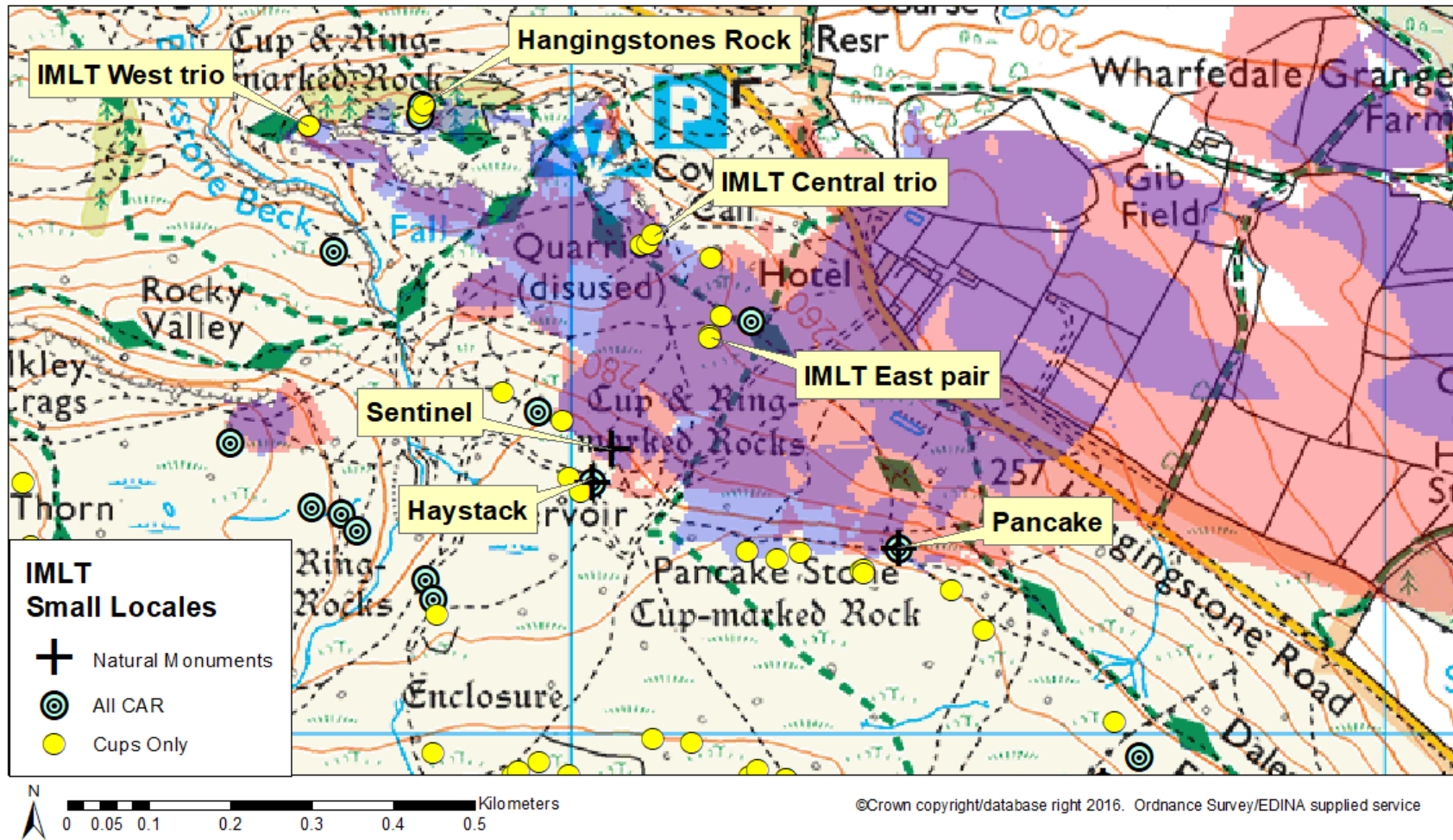


Fig 94 IMLT Small Locales, two trios and a pair. Pancake viewshed: visible area shown in red. Sentinel viewshed: visible area shown in blue. Overlap appears purple. p266

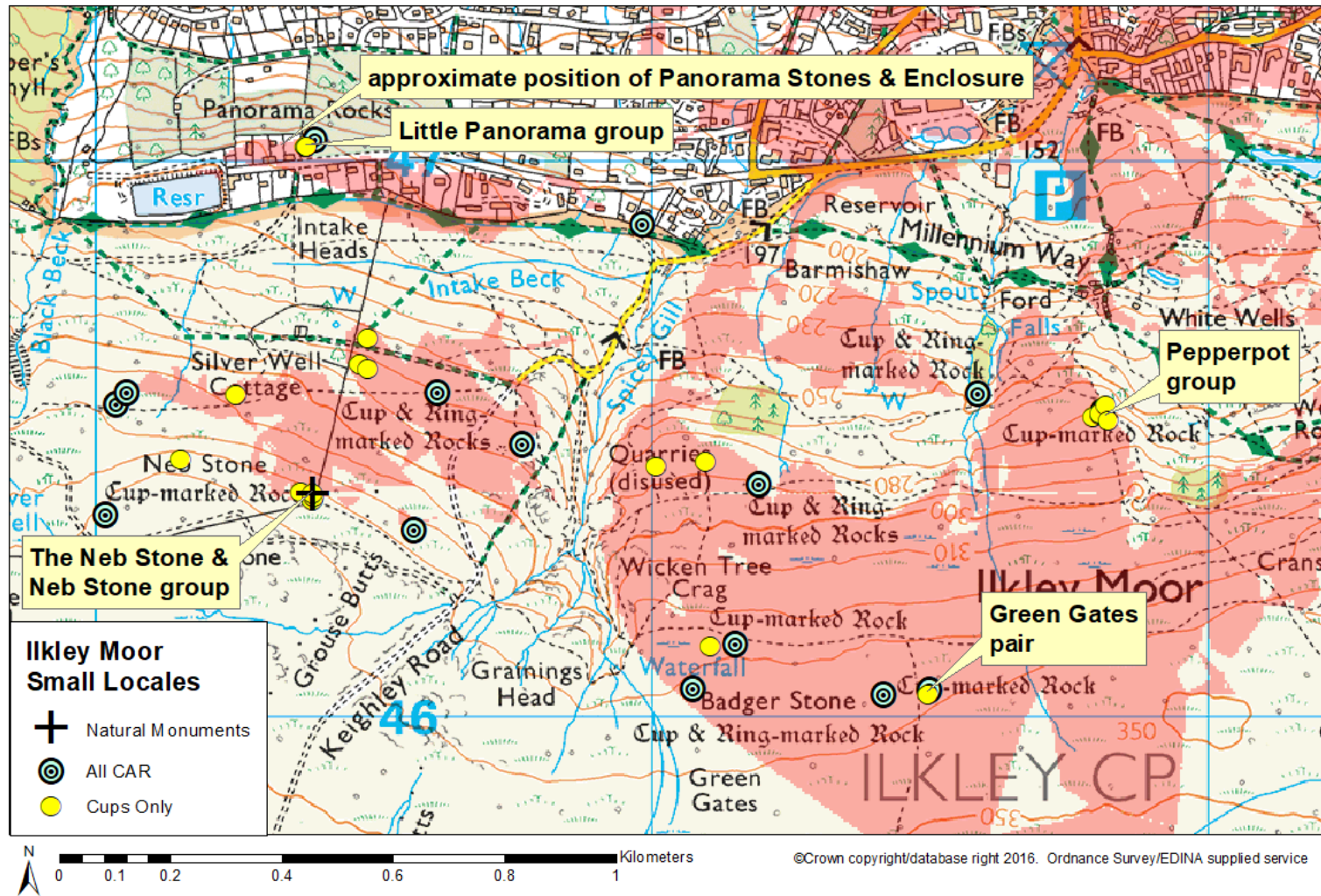


Fig 100 Ilkley Moor Small Locales. Neb Stone viewed: visible area shown in red. p270

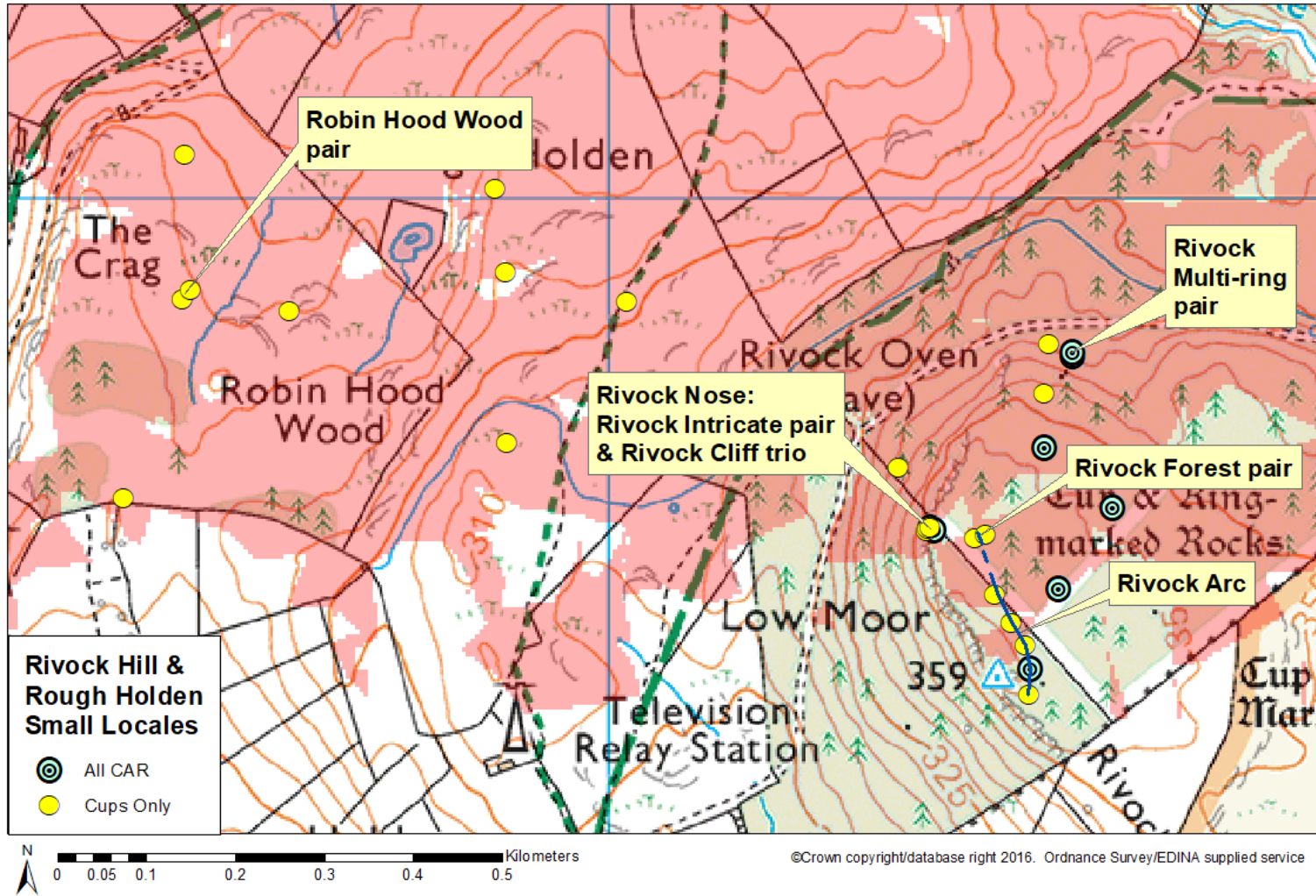


Fig 103 Rivoek Hill & Rough Holden Small Locales. Doublers viewshed: visible area shown in red. p273

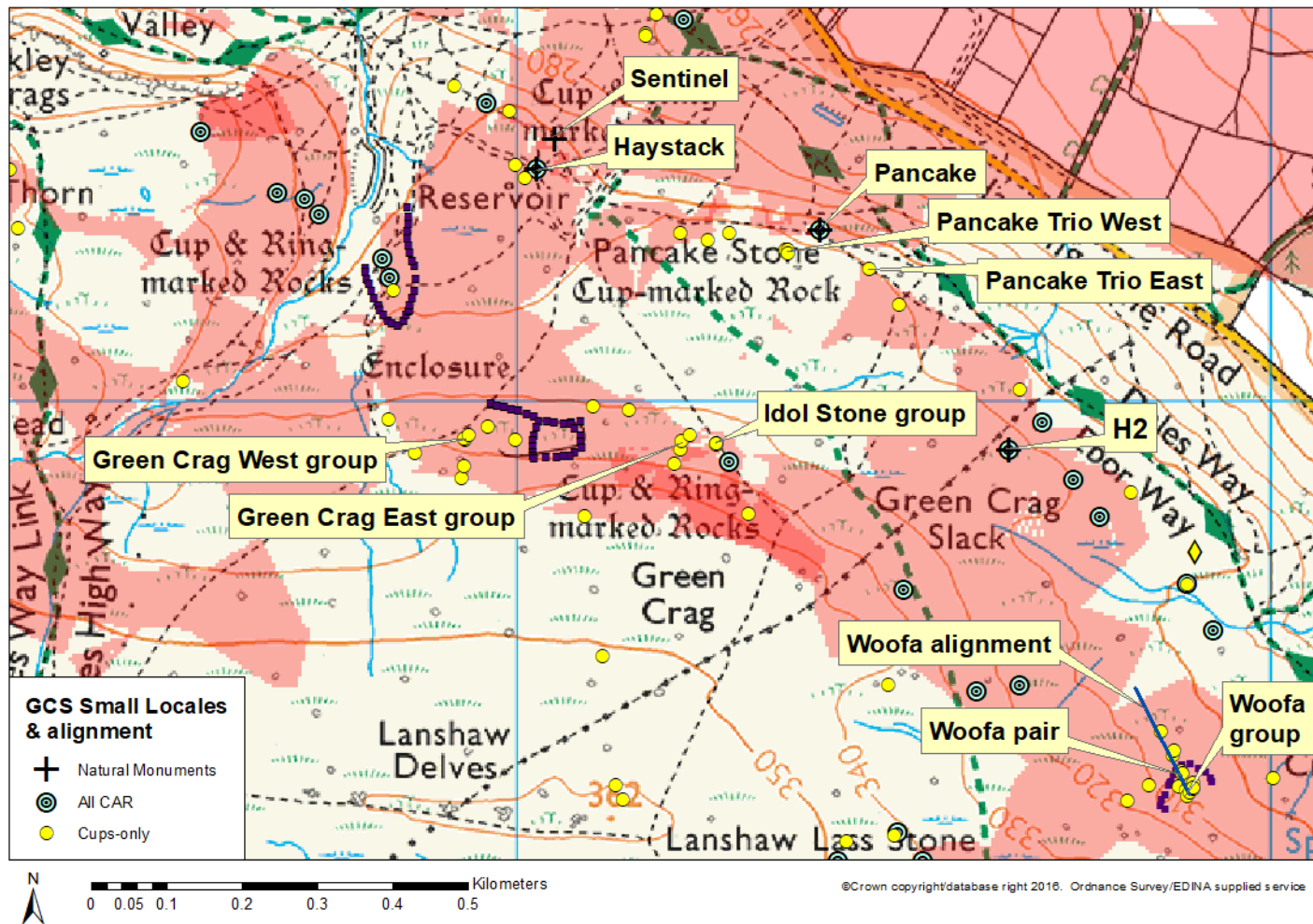


Fig 106 Green Crag Slack: possible Small Locales and Alignment. Cumulative viewsheds of the Haystack, the Pancake and H2: visible areas shown in red. p280

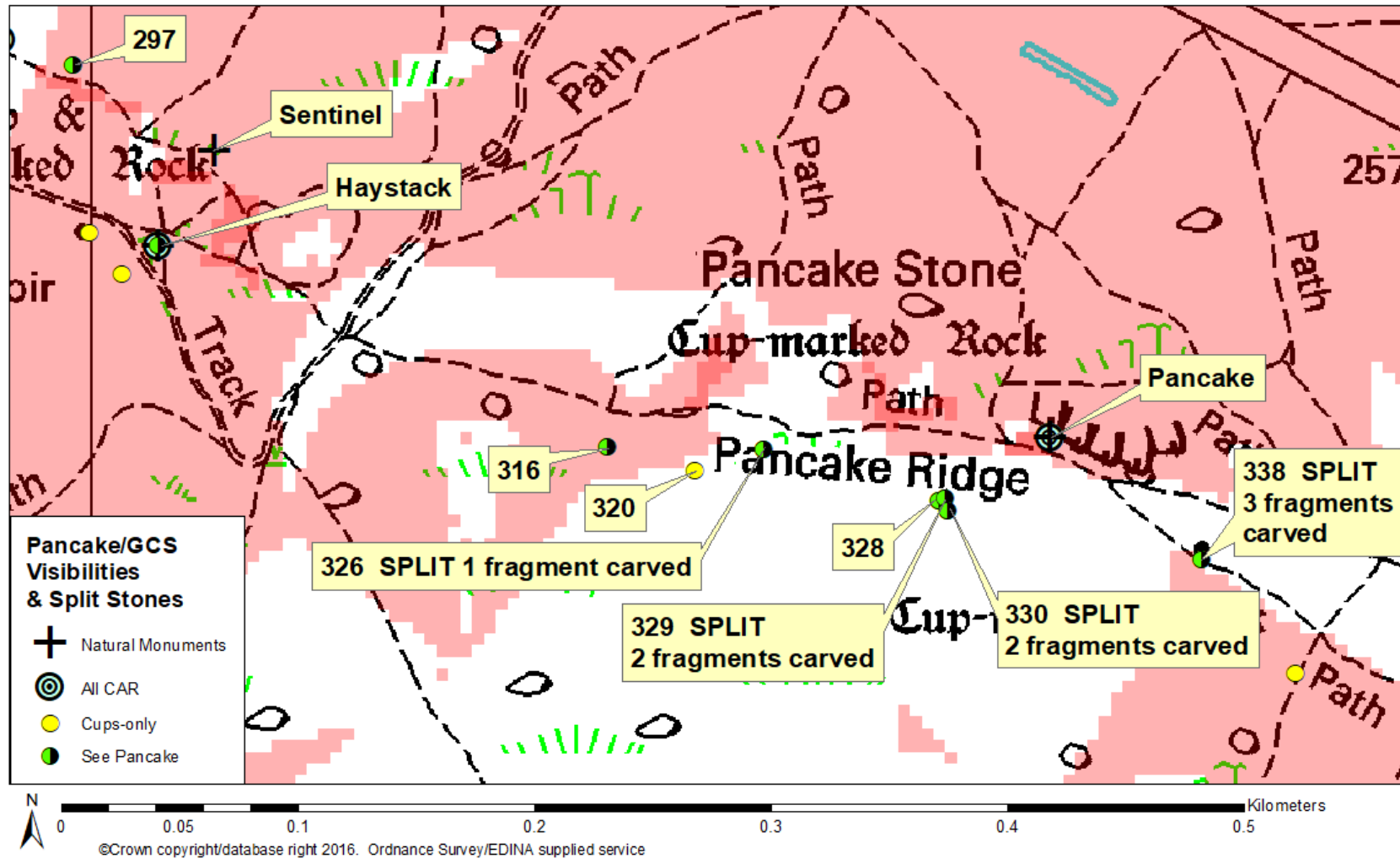


Fig 107 The Pancake's Small Locales on GCS. Pancake viewshed: visible area shown in red. p281

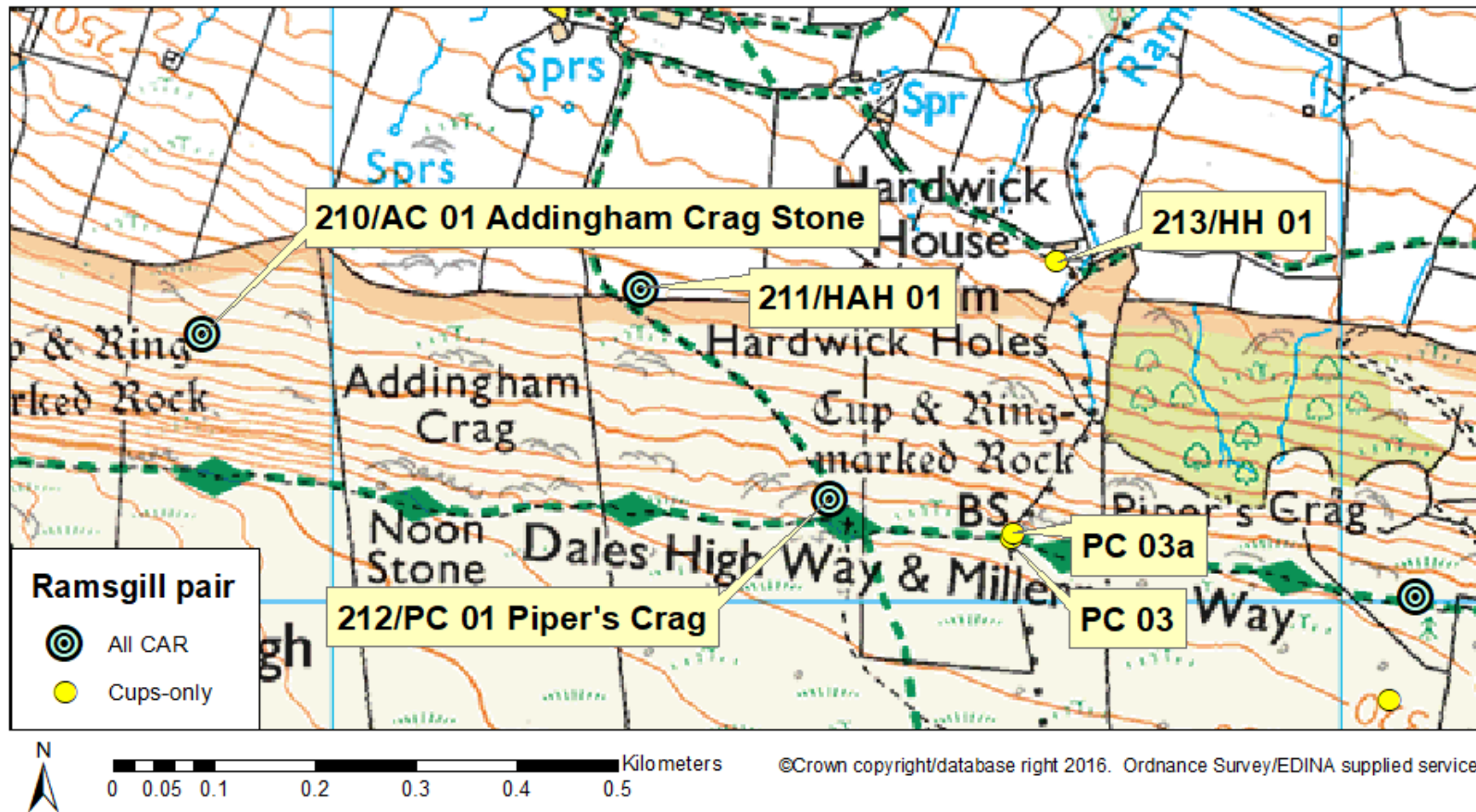


Fig 119 Part of NW Edge and the proposed Ramsgill pair, PC 03 & PC 03a. p291

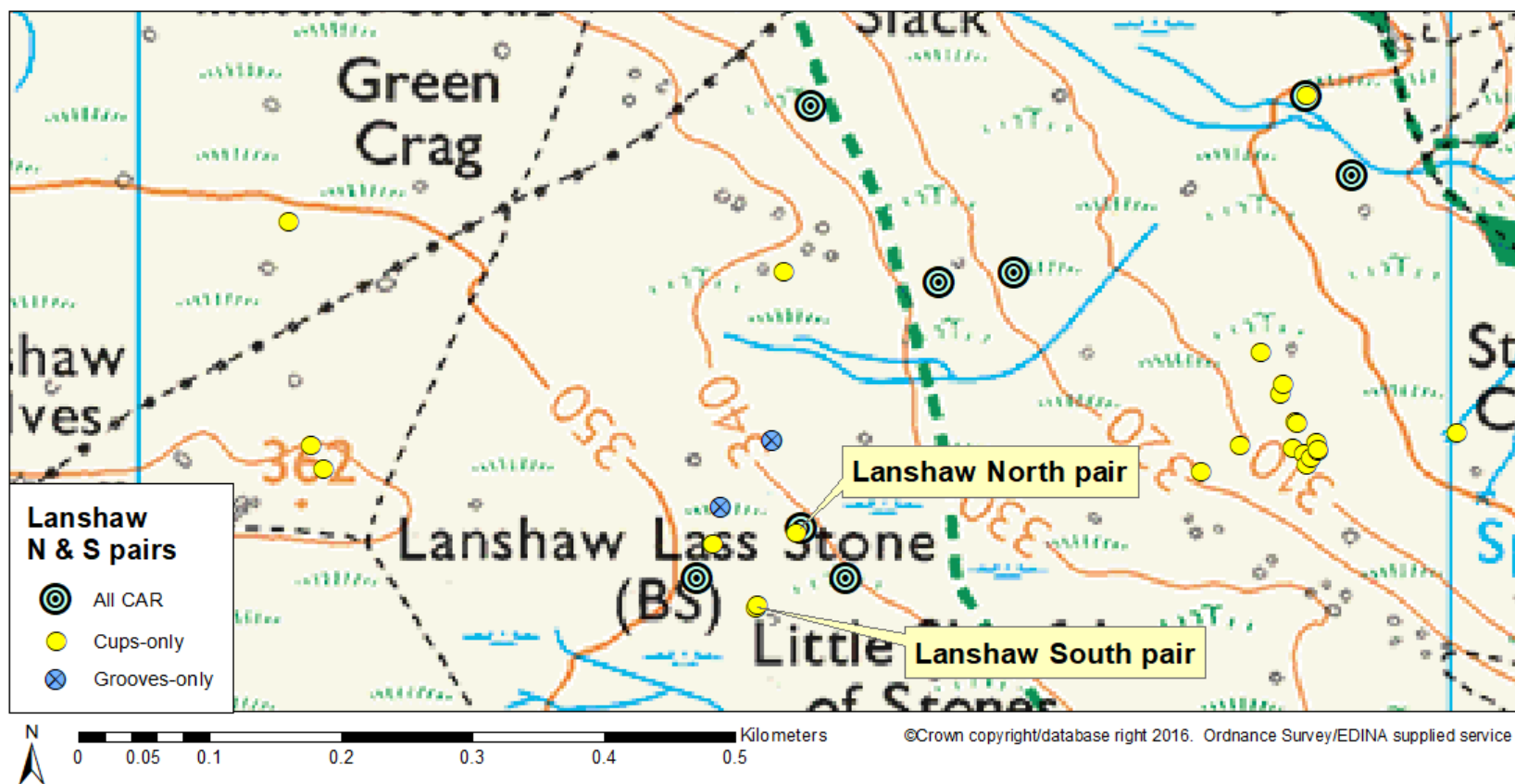


Fig 121 Lanshaw North and Lanshaw South groups. p293



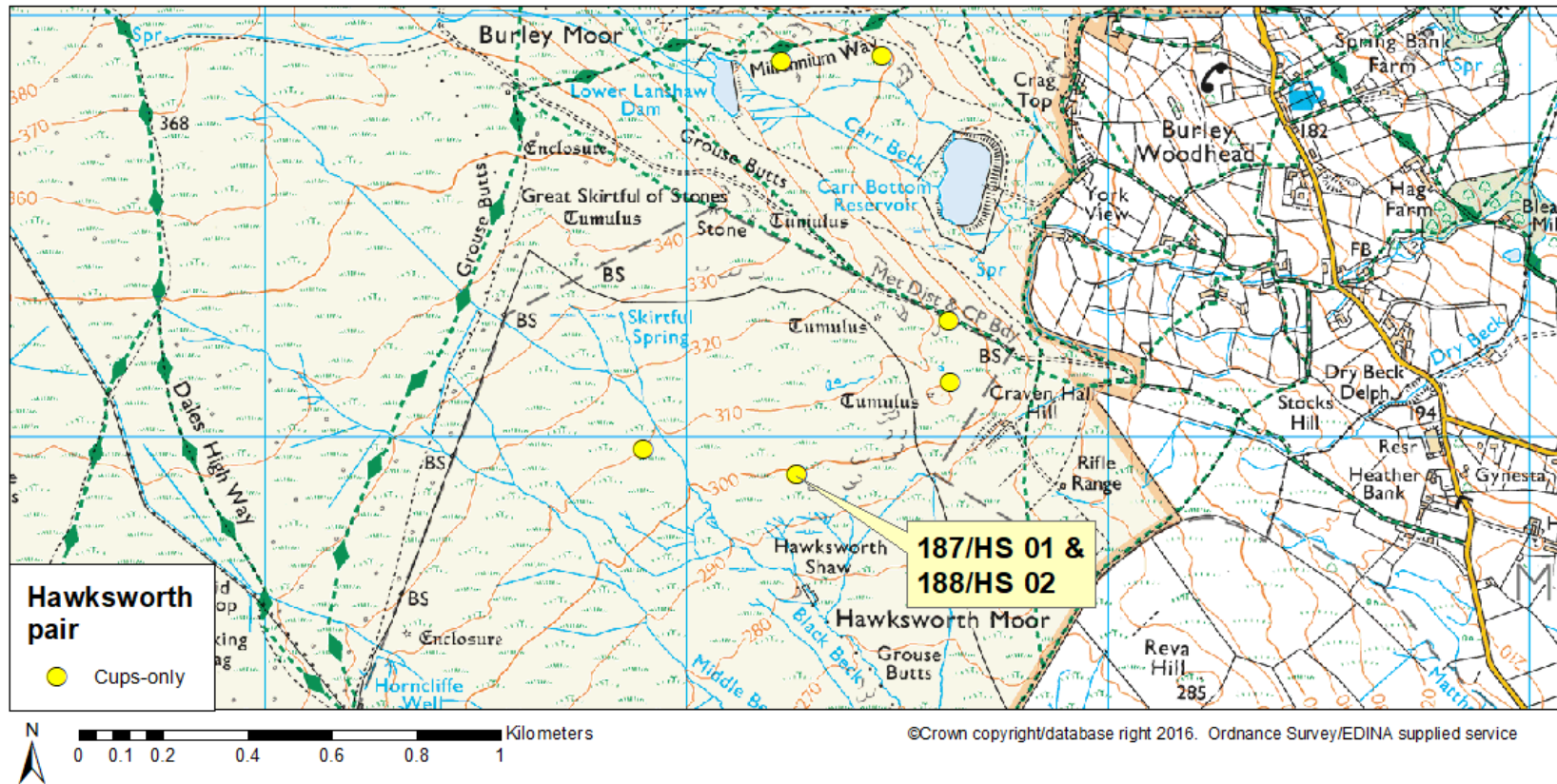


Fig 122 Hawksworth pair, 187/HS 01 & 188/HS 02. p294

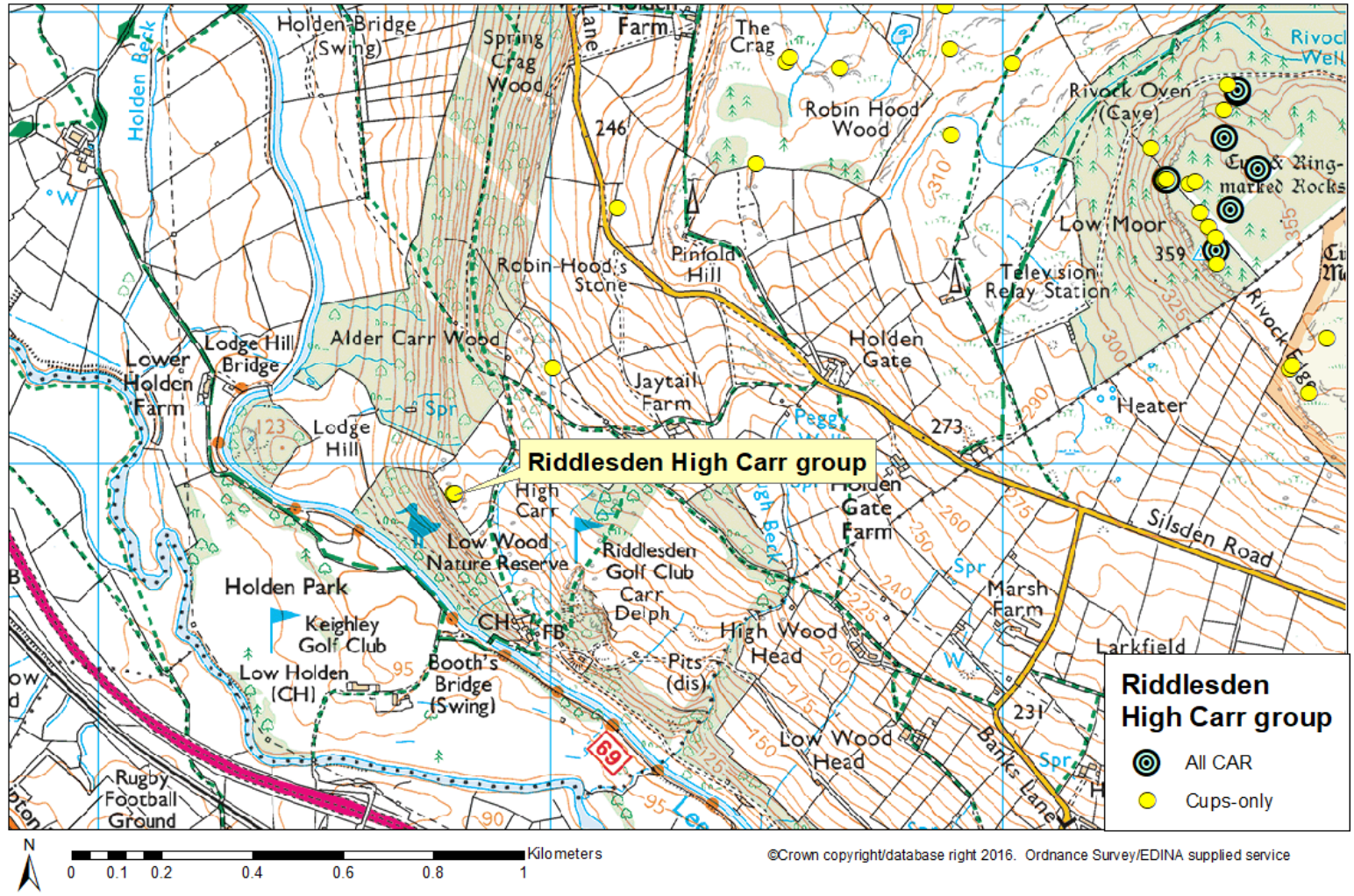


Fig 123 South-western Moor: Riddlesden High Carr group. p295

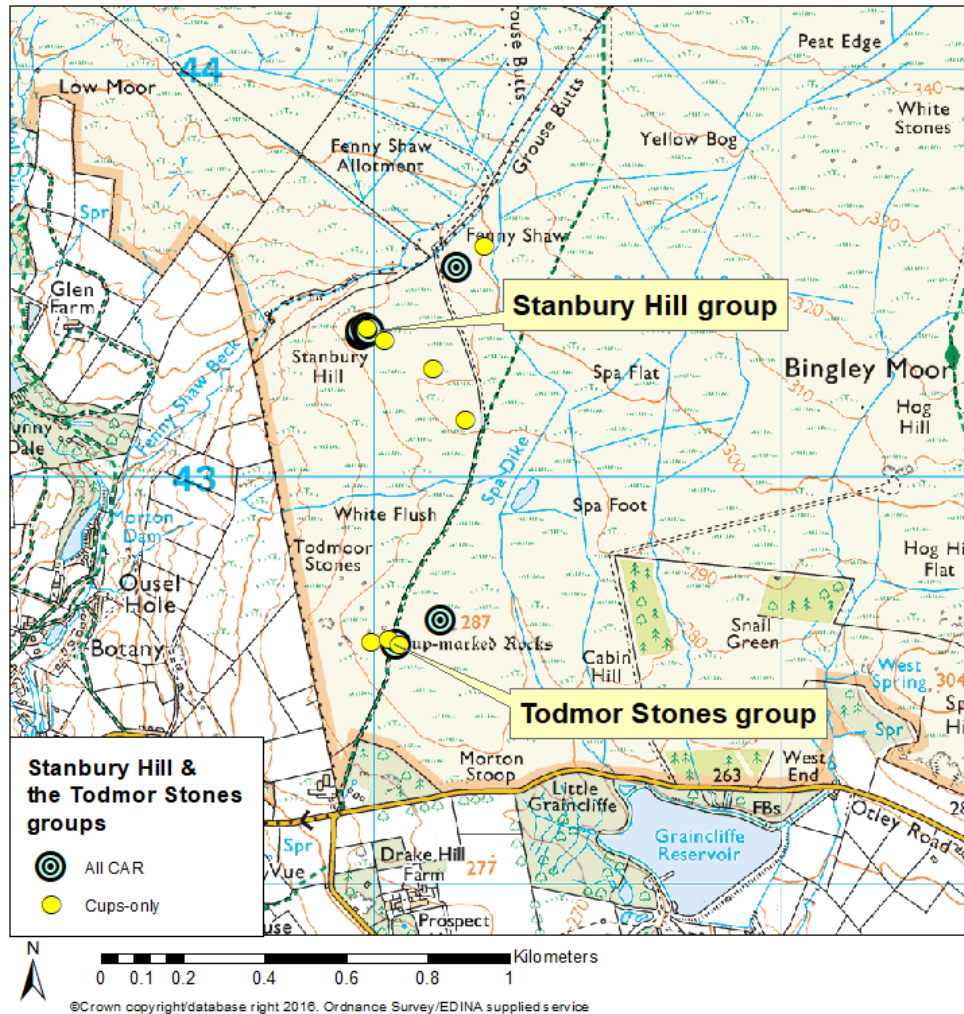


Fig 129 Stanbury Hill group, and the Todmor Stones. p305

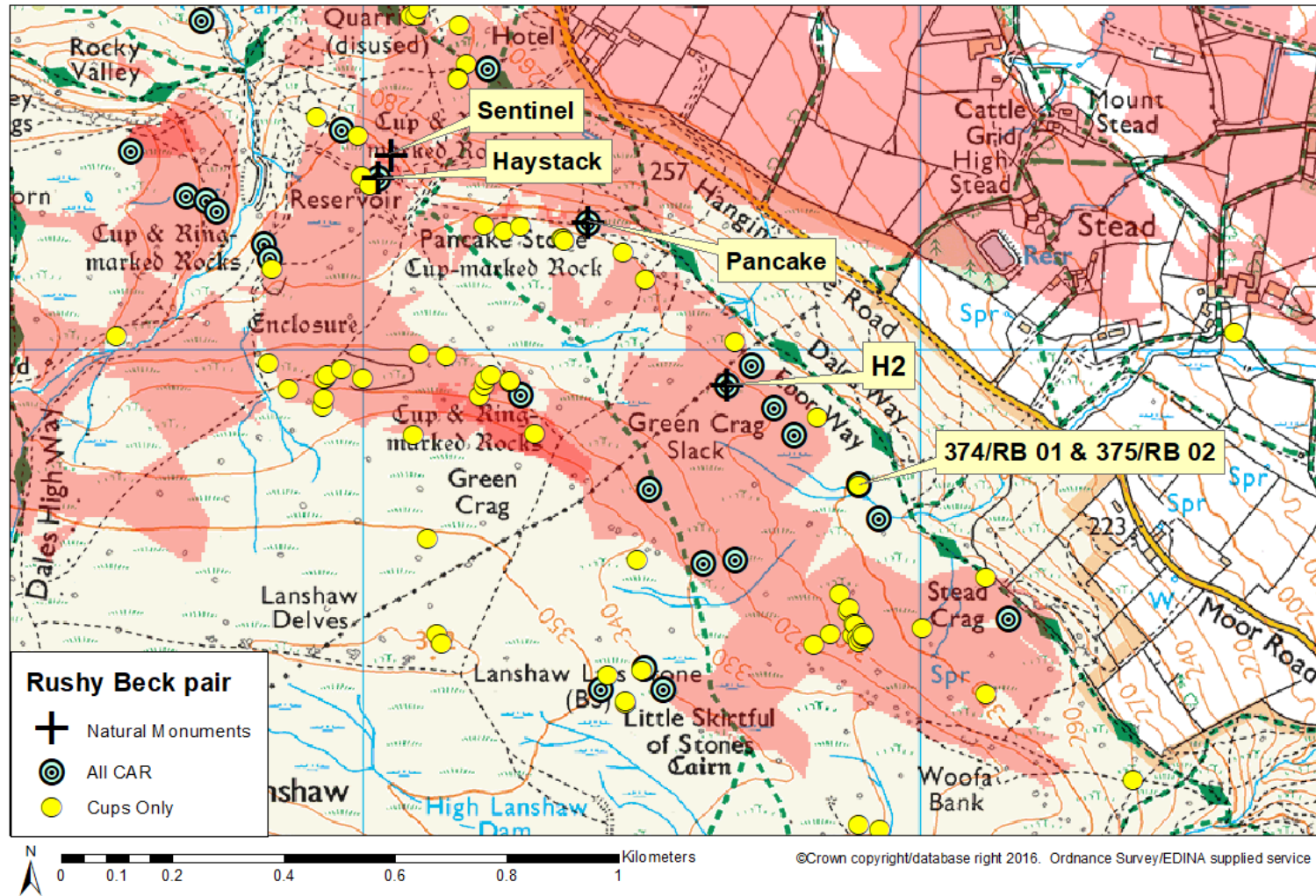


Fig 133 Rushy Beck pair. The overlapping viewsheds of the Pancake, Haystack and H2 are shown, visible areas in red. p309