

The Revival of Uncleby: An antiquarian excavation of an Anglian Cemetery

Volume2 of 2: Appendices

Abigail Reid Hansen

Doctor of Philosophy
University of York
Archaeology

November 2017

Table of Contents

<i>Table of Contents</i>	2
<i>List of Figures</i>	8
APPENDIX 1: CATALOGUE OF OBJECTS BY GRAVE	11
<i>Graves and associated objects</i>	11
GRAVE ONE	23
1.1 <i>Glass Bead (missing)</i>	23
1.2 <i>Workbox</i>	23
1.3 <i>Openwork Disc</i>	24
GRAVE THREE	26
3.1 <i>Workbox</i>	26
3.2 <i>Annular Brooch with Animal Heads</i>	27
3.3 <i>Beads</i>	28
3.4 <i>Two Glass Beads</i>	28
3.5 <i>Beads (unassociated; probably Unc5)</i>	29
3.6 <i>Silver Slipknot Ring</i>	29
3.7 <i>Silver Slipknot Ring in three parts</i>	29
3.8 <i>Silver Slipknot Ring (missing)</i>	30
3.9 <i>Knife</i>	30
GRAVE FIVE	31
5.1 <i>Double-edged Sword</i>	31
GRAVE SIX	32
6.1 <i>Knife</i>	32
6.2 <i>Spatula tool (missing/unassociated)</i>	32
GRAVE SEVEN	33
7.1 <i>Knife (missing/unassociated)</i>	33
7.2 <i>Ring</i>	33
7.3 <i>'Thin piece of silver' (missing)</i>	33
GRAVE EIGHT	34
8.1 <i>Knife</i>	34
GRAVE NINE	35
9.1 <i>Knife</i>	35
9.2 <i>Seax</i>	36
9.3 <i>Iron Buckle (missing/unassociated)</i>	36
9.4 <i>'Thin piece of bronze' (missing)</i>	36
GRAVE TEN	37
10.1 <i>Knife</i>	37
10.2 <i>Spatula Tool</i>	38
10.3 <i>Copper Alloy Buckle</i>	38
GRAVE ELEVEN	39
11.1 <i>Seax</i>	39
11.2 <i>Whetstone</i>	40
11.3 <i>'Bone handle'</i>	40
11.4 <i>'Iron loops' (missing/unassociated)</i>	41
*11.5 <i>'Some iron like a hook-and-eye'</i>	41
11.6 <i>Knife (missing/unassociated)</i>	41
GRAVE TWELVE	42
12.1 <i>Annular Brooch with Banding</i>	42

GRAVE THIRTEEN.....	43
13.1 Beads.....	43
13.2 Iron Buckle.....	44
13.3 Silver and Carnelian Pendant (missing).....	44
13.4 Knife (missing/unassociated).....	44
GRAVE FIFTEEN	45
15.1 Knife.....	45
GRAVE SIXTEEN.....	46
16.1 Knife Fragment/Tang.....	46
16.2 Buckle.....	46
GRAVE TWENTY-TWO.....	47
22.1 Knife.....	47
22.2 Knife.....	47
GRAVE TWENTY-THREE.....	48
23.1 Knife (missing/unassociated).....	48
23.2 Iron Buckle (missing/unassociated).....	48
23.4 Piece of iron (missing/unassociated).....	48
GRAVE TWENTY-FOUR.....	49
24.1 Knife.....	49
GRAVE TWENTY-FIVE.....	50
25.1 A glass melon bead (missing).....	50
GRAVE TWENTY-SIX	51
26.1 Knife.....	51
26.2 Iron Rod.....	51
26.3 Iron Rod.....	52
26.4 Small piece of bronze (missing/unassociated).....	52
GRAVE TWENTY-NINE	53
29.1 Bone Spindle Whorl.....	53
29.2 Stone Spindle-Whorl (missing).....	54
29.3 Workbox.....	54
29.4 Work Box Threads.....	55
29.5 Girdle-Hanger (missing/unassociated).....	55
29.6 Spindle-Whorl (missing).....	55
GRAVE THIRTY-ONE.....	56
31.1 Workbox (missing).....	56
*31.2 Workbox (missing).....	56
31.3a Silver Annular Brooch with Garnet.....	56
31.3b Silver Pin (for brooch 33.3).....	57
31.4 Silver Pin/Needle.....	57
31.5 Beads.....	58
31.6 Copper Alloy Bowl.....	59
31.7a Openwork Buckle.....	60
31.7b Backplate for openwork buckle.....	60
31.8 Knife.....	61
31.9 Spatula Tool (missing/unassociated).....	61
31.10 'Some Iron' (missing/unassociated).....	61
31.11 Silver Pin/Needle (missing).....	61
GRAVE THIRTY-TWO.....	62
32.1 Knife (missing/unassociated).....	62

32.2 Spatula Tool (missing/Unassociated).....	62
GRAVE THIRTY-THREE	63
33.1 Knife (missing/unassociated)	63
GRAVE THIRTY-FIVE	64
35.1 Annular Brooch.....	64
35.2 Annular Brooch.....	65
35.3 Bronze Curved Pin/Fastener	65
35.4 Copper Alloy Ring	66
35.5 'Large Iron House Key' (missing)	66
35.6 'Girdle Ring' (missing/unassociated)	66
35.7 Chain (missing/unassociated)	66
35.8 'Bronze plate with iron on it' (missing/unassociated).....	66
35.9 'Small bronze pin-shaped object' (lost)	66
GRAVE THIRTY-SEVEN	67
37.1 Buckle and Plate	67
37.2 Polychrome Globular Glass Bead	68
37.3 Buckle.....	68
GRAVE THIRTY-EIGHT	69
38.1 Two Amethyst Beads	69
38.2 Beads	70
38.3 'Some bronze with wood inside it'	71
38.4 'Bronze with rivets' (missing).....	71
38.5 Quartz Bead (missing).....	71
38.6 'Some iron' (missing/unidentified)	71
GRAVE THIRTY-NINE.....	72
39.1 Knife	72
39.2 Samian ware 'Necklace' (missing)	72
GRAVE FORTY-ONE	73
41.1 Knife (missing).....	73
GRAVE FORTY-TWO.....	74
42.1 Copper Alloy Buckle	74
42.2 Knife	74
GRAVE FORTY-THREE	76
43.1 Annular Brooch.....	76
43.2 Safety-Pin Brooch	76
43.3 Polychrome Globular Glass Bead	77
GRAVE FORTY-FOUR	78
44.1 Iron Double-Tongue Buckle.....	78
GRAVE FORTY-FIVE	79
45.1 Annular Brooch.....	79
45.2 Knife (missing/unassociated)	79
45.3 Bead (missing/unassociated)	79
GRAVE FORTY-SIX	80
46.1 'Some pieces of iron' (missing/unassociated)	80
GRAVE FORTY-SEVEN	81
47.1 Iron Buckle (missing/unassociated).....	81
GRAVE FORTY-EIGHT	82
48.1 Knife (missing/unassociated)	82

48.2 Iron Buckle (<i>missing/unassociated</i>).....	82
GRAVE FORTY-NINE.....	83
49.1 Copper Alloy Buckle	83
GRAVE FIFTY	84
50.1 Knife (<i>missing/unassociated</i>)	84
GRAVE FIFTY-TWO	85
52.1 Knife	85
52.2 Spatula Tool (<i>missing/unassociated</i>)	86
52.3 'Large Nail' (<i>missing? This may be referring to the handle of knife</i> 52.1)	86
GRAVE FIFTY-THREE	86
53.1 Buckle.....	86
53.2 Knife (<i>blade only</i>)	86
53.3 'Small piece of iron like a pin' (<i>missing/unassociated</i>)	87
GRAVE FIFTY-SIX	87
56.1 Knife	87
56.2 Spatula Tool	88
56.3 'Piece of Iron' (<i>missing/unassociated</i>).....	88
GRAVE FIFTY-SEVEN	89
57.1 Knife	89
57.2 Buckle (<i>missing/unassociated</i>).....	89
57.3 Buckle (<i>missing/unassociated</i>).....	89
57.4 'Piece of bronze' (<i>missing/unassociated</i>).....	89
57.5 'Piece of glass' (<i>missing</i>).....	89
GRAVE FIFTY-EIGHT	90
58.1 Copper Alloy Buckle <i>without plate</i>	90
58.2 Iron 'knife'/ <i>miscellaneous</i>	90
GRAVE FIFTY-NINE.....	91
59.1 Buckle (<i>missing/unassociated</i>).....	91
59.2 Pin (<i>buckle tongue?</i>) (<i>missing/unassociated</i>).....	91
59.3 'Nail-Head'	91
GRAVE SIXTY	92
60.1 Iron Buckle	92
60.2 Knife	92
60.3 'Thin bronze bands with rivets' (<i>missing</i>)	93
60.4 'small pieces of bronze, each forming three sides of an oblong' (<i>missing</i>).....	93
GRAVE SIXTY-ONE	94
61.1 Iron Buckle	94
61.2 Knife	95
61.3 Seax	96
61.4 Bronze Rivets (7) (<i>missing</i>).....	96
61.5 'Remains of wood with a single bronze rivet' (<i>missing</i>).....	96
GRAVE SIXTY-TWO	97
62.1 Beads	97
62.2 Silver Bulla Pendant.....	98
62.3 Annular Brooch.....	98
62.4 Bone Comb	99
62.5 Pyramid Mount	99

62.6 Silver Ring (one of a pair; second ring missing).....	100
62.7 Knife (missing/unassociated)	100
62.8 Copper Alloy Pennanular Ring.....	101
62.9 Ring.....	101
62.10 Bone Spindle-Whorl	102
62.11 'Two Large Keys'/'Two Girdle-Hangers' (missing/unassociated)	102
62.12 'A White Object, possibly a sliver ring' (missing).....	102
GRAVE SIXTY-THREE.....	103
63.1 Piece of Iron (missing/unassociated)	103
GRAVE SIXTY-FOUR.....	104
64.1 Knife (missing/unassociated)	104
64.2 Iron Buckle (missing/unassociated).....	104
64.3 'Two pieces of bronze, like those found in no. 60' (missing).....	104
GRAVE SIXTY-FIVE.....	105
65.1 Annular Brooch.....	105
65.2 Small Fragment of Cloisonné.....	106
65.3 Comb.....	106
65.4 Gold Disc Pendant (?) (unassociated)	107
GRAVE SIXTY-SIX	108
66.1 Silver Ring (missing)	108
66.2 Beads (unassociated).....	108
66.3 Iron Buckle (missing/unassociated).....	108
66.4 Knife (missing/unassociated)	108
66.5 Iron Chain.....	108
66.6 Hooked Tag.....	109
66.7 Hooked Tag.....	109
66.8 Bead (missing/unassociated)	109
66.9 Round Polished Stone.....	110
66.10 Piece of Jet (missing).....	110
GRAVE SIXTY-SEVEN.....	111
67.1 Knife (missing/unassociated)	111
67.2 Spatula Tool (missing/unassociated)	111
67.3 Iron Buckle (missing/unassociated).....	111
GRAVE SIXTY-EIGHT	112
68.1 Seax	112
68.2 Knife (missing/unassociated)	112
68.3 Buckle (missing/unassociated).....	112
GRAVE I	113
I.1 Knife (missing/unassociated)	113
I.2 Knife (missing/unassociated)	113
I.3 Bronze Buckle (missing/unassociated)	113
I.4 Iron Buckle (missing/unassociated).....	113
CATALOGUE PART 2: UNASSOCIATED OBJECTS.....	114
Unc1 Bead.....	114
Unc2 Bead.....	114
Unc3 Decorated Bead.....	115
Unc4 Bead.....	115
Unc5 Beads.....	116
Unc6 Bead.....	116
Unc7 Bead.....	117

<i>Unc9 Copper Alloy Penannular Ring</i>	118
<i>Unc10 Iron Buckle</i>	118
<i>Unc11 Iron Buckle</i>	119
<i>Unc12 Iron Buckle Plate</i>	119
<i>Unc13 Iron Buckle</i>	120
<i>Unc14 Iron Buckle</i>	120
<i>Unc15 Knife</i>	121
<i>Unc16 Blade</i>	121
<i>Unc17 Knife</i>	122
<i>Unc18 Blade Fragment</i>	122
<i>Unc19 Unidentified Iron Object</i>	123
<i>Unc20 Two Iron Blades</i>	124
<i>Unc21 Unidentified Iron Object</i>	124
<i>Unc22 Whetstone</i>	125
<i>Unc23 Iron Fragment</i>	127
<i>Unc24 Unidentified Iron Object</i>	128
<i>Unc25 Unidentified Object</i>	129
<i>Unc26 Gold Disc Pendant</i>	130
<i>Unc27 Gold Disc Pendant</i>	131
<i>Unc28 Iron Fragments</i>	131
<i>Unc29 Copper Alloy Fragments</i>	132

CATALOGUE PART 3: CONTEMPORARY DESCRIPTIONS OF GRAVES

WITHOUT OBJECTS	133
<i>Grave Two</i>	133
<i>Grave Four</i>	133
<i>Grave Fourteen</i>	133
<i>Grave Seventeen</i>	133
<i>Grave Eighteen A and B</i>	134
<i>Grave Eighteen C</i>	134
<i>Grave Nineteen</i>	134
<i>Grave Twenty</i>	134
<i>Grave Twenty-One</i>	134
<i>Grave Twenty-Seven</i>	135
<i>Grave Twenty-Eight A and B</i>	135
<i>Grave Thirty</i>	135
<i>Grave Thirty-Four</i>	135
<i>Grave Thirty-Six</i>	135
<i>Grave Forty</i>	136
<i>Grave Fifty-One</i>	136
<i>Grave Fifty-Five</i>	136
<i>Grave II</i>	136
<i>Grave III</i>	136

APPENDIX 2: ARCHIVED PHOTOGRAPHS OF THE UNCLEBY COLLECTION IN THE YORKSHIRE MUSEUM..... 137

APPENDIX 3: WILLIAM GREENWELL TIMELINE AND SOCIETY MEMBERSHIPS 143

<i>Timeline</i>	143
<i>Associated Societies</i>	146

APPENDIX 4: DOMESTIC SITES CONSULTED..... 147

List of Figures

FIGURE 1 GRAVE 1 WORKBOX.	24
FIGURE 2 GRAVE 1 OPENWORK DISC.	25
FIGURE 3 GRAVE 3 WORKBOX.	27
FIGURE 4 GRAVE 3 ANNULAR BROOCH.	28
FIGURE 5 GRAVE 3 BEADS.	28
FIGURE 6 GRAVE 3 BEADS. (2:1).	29
FIGURE 7 GRAVE 3 SLIPKNOT RING (ONE OF TWO).	29
FIGURE 8 GRAVE 3 SLIPKNOT RING (TWO OF TWO).	29
FIGURE 9 GRAVE 3 KNIFE.	30
FIGURE 10 GRAVE 5 SWORD.	31
FIGURE 11 GRAVE 6 KNIFE.	32
FIGURE 12 GRAVE 7 RING.	33
FIGURE 13 GRAVE 8 KNIFE.	34
FIGURE 14 GRAVE 9 KNIFE.	35
FIGURE 15 GRAVE 9 SEAX.	36
FIGURE 16 GRAVE 10 KNIFE.	37
FIGURE 17 GRAVE 10 SPATULA TOOL.	38
FIGURE 18 GRAVE 10 BUCKLE.	38
FIGURE 19 GRAVE 11 SEAX.	39
FIGURE 20 GRAVE 11 WHETSTONE.	40
FIGURE 21 GRAVE 11 'HANDLE'.	40
FIGURE 22 GRAVE 11 'HOOK-AND-EYE'.	41
FIGURE 23 GRAVE 12 ANNULAR BROOCH.	42
FIGURE 24 GRAVE 13 BEADS.	43
FIGURE 25 GRAVE 13 BUCKLE.	44
FIGURE 26 GRAVE 15 KNIFE.	45
FIGURE 27 GRAVE 16 KNIFE TANG (?).	46
FIGURE 28 GRAVE 16 BUCKLE.	46
FIGURE 29 GRAVE 22 KNIFE NO. 1.	47
FIGURE 30 GRAVE 22 KNIFE NO. 2.	47
FIGURE 31 GRAVE 24 KNIFE.	49
FIGURE 32 GRAVE 26 KNIFE.	51
FIGURE 33 GRAVE 26 IRON ROD NO. 1.	52
FIGURE 34 GRAVE 26 IRON ROD NO. 2.	52
FIGURE 35 GRAVE 29 SPINDLE-WHORL.	53
FIGURE 36 GRAVE 29 WORKBOX.	54
FIGURE 37 GRAVE 29 THREADS AND TEXTILES FROM WORKBOX 29.4.	55
FIGURE 38 GRAVE 31 ANNULAR BROOCH.	57
FIGURE 39 GRAVE 31 PIN FROM BROOCH 31.3A.	57
FIGURE 40 GRAVE 31 PIN/NEEDLE.	57
FIGURE 41 GRAVE 31 BEADS.	58
FIGURE 42 GRAVE 31 BOWL.	59
FIGURE 43 GRAVE 31 BUCKLE.	60
FIGURE 44 GRAVE 31 BACKPLATE FOR BUCKLE 31.7A.	60
FIGURE 45 GRAVE 31 KNIFE.	61
FIGURE 46 GRAVE 31 ANNULAR BROOCH (ONE OF A PAIR).	64
FIGURE 47 GRAVE 35 ANNULAR BROOCH (ONE OF A PAIR).	65
FIGURE 48 GRAVE 35 CURVED PIN/FASTENER.	65
FIGURE 49 GRAVE 35 RING.	66
FIGURE 50 GRAVE 37 BUCKLE. (2:1).	67
FIGURE 51 GRAVE 37 POLYCHROME BEAD (2:1).	68
FIGURE 52 GRAVE 37 BUCKLE.	68
FIGURE 53 GRAVE 38 AMETHYST BEADS.	69
FIGURE 54 GRAVE 38 BEADS.	70
FIGURE 55 DETAIL OF NON-GLASS BEADS FROM GRAVE 38.	70
FIGURE 56 GRAVE 38 UNIDENTIFIED COPPER ALLOY AND WOOD FRAGMENT.	71
FIGURE 57 GRAVE 39 KNIFE.	72

FIGURE 58 GRAVE 42 BUCKLE.....	74
FIGURE 59 GRAVE 42 KNIFE.....	75
FIGURE 60 GRAVE 43 ANNULAR BROOCH.....	76
FIGURE 61 GRAVE 43 'SAFETY PIN' BROOCH.....	77
FIGURE 62 GRAVE 43 POLYCHROME BEAD.....	77
FIGURE 63 GRAVE 44 BUCKLE.....	78
FIGURE 64 GRAVE 45 ANNULAR BROOCH.....	79
FIGURE 65 GRAVE 49 BUCKLE, FRONT AND BACK.....	83
FIGURE 66 GRAVE 53 KNIFE BLADE.....	85
FIGURE 67 GRAVE 53 BUCKLE.....	86
FIGURE 68 GRAVE 53 KNIFE BLADE.....	87
FIGURE 69 GRAVE 56 KNIFE.....	87
FIGURE 70 GRAVE 56 SPATULA TOOL.....	88
FIGURE 71 GRAVE 57 KNIFE.....	89
FIGURE 72 GRAVE 58 BUCKLE.....	90
FIGURE 73 GRAVE 58, ILLUSTRATION OF UNIDENTIFIED IRON OBJECT.....	90
FIGURE 74 GRAVE 59 'NAIL HEAD'.....	91
FIGURE 75 GRAVE 60 BUCKLE.....	92
FIGURE 76 GRAVE 60 KNIFE.....	92
FIGURE 77 GRAVE 61 BUCKLE, FRONT AND BACK.....	94
FIGURE 78 GRAVE 61 KNIFE WITH DETAIL OF TEXTILE IMPRESSION.....	95
FIGURE 79 GRAVE 61 SEAX.....	96
FIGURE 80 GRAVE 62 BEADS.....	98
FIGURE 81 GRAVE 62 BULLA PENDANT.....	98
FIGURE 82 GRAVE 62 ANNULAR BROOCH.....	99
FIGURE 83 GRAVE 62 COMB.....	99
FIGURE 84 GRAVE 62 PYRAMID MOUNT.....	100
FIGURE 85 GRAVE 62 SLIPKNOT RING.....	100
FIGURE 86 GRAVE 62 RING.....	101
FIGURE 87 GRAVE 62 RING.....	101
FIGURE 88 GRAVE 62 SPINDLE-WHORL.....	102
FIGURE 89 GRAVE 65 ANNULAR BROOCH.....	105
FIGURE 90 GRAVE 65 UNIDENTIFIED CLOISSONNÉ OBJECT.....	106
FIGURE 91 GRAVE 65 COMB FRAGMENTS.....	106
FIGURE 92 GRAVE 65 DETAILS OF COMB FRAGMENTS.....	107
FIGURE 93 GRAVE 66 CHAIN.....	108
FIGURE 94 GRAVE 66 HOOKED TAG NO. 1.....	109
FIGURE 95 GRAVE 66 HOOKED TAG NO. 2.....	109
FIGURE 96 GRAVE 66 POLISHED STONE.....	110
FIGURE 97 GRAVE 68 SEAX.....	112
FIGURE 98 UNC1 BEAD.....	114
FIGURE 99 UNC2 BEAD.....	114
FIGURE 100 UNC3 POLYCHROME BEAD.....	115
FIGURE 101 UNC4 BEAD.....	115
FIGURE 102 UNC5 BEADS (2).....	116
FIGURE 103 UNC6 POLYCHROME BEAD.....	116
FIGURE 104 UNC7 BONE BEAD.....	117
FIGURE 105 UNC8 'CLIP'.....	117
FIGURE 106 UNC9 PENANNULAR RING.....	118
FIGURE 107 UNC10 BUCKLE.....	118
FIGURE 108 UNC11 BUCKLE.....	119
FIGURE 109 UNC12 BUCKLE, FRONT AND BACK.....	119
FIGURE 110 UNC13 BUCKLE.....	120
FIGURE 111 UNC14 IRON BUCKLE; FRONT AND BACK.....	120
FIGURE 112 UNC15 KNIFE.....	121
FIGURE 113 UNC16 BLADE(S).....	121
FIGURE 114 UNC17 KNIFE.....	122
FIGURE 115 UNC18 BLADE FRAGMENT.....	122
FIGURE 116 UNC19 UNIDENTIFIED IRON OBJECT.....	123

FIGURE 117 UNC20 TWO BLADES.	124
FIGURE 118 UNC21 UNIDENTIFIED IRON OBJECT.	124
FIGURE 119 UNC22 WHETSTONE.	126
FIGURE 120 UNC23 IRON FRAGMENT.	127
FIGURE 121 UNC24 UNIDENTIFIED IRON OBJECT.	128
FIGURE 122 UNC25 WOOD AND IRON (?) OBJECT.	129
FIGURE 123 UNC27 GOLD DISC PENDANT WITH SCROLLWORK.	130
FIGURE 124 UNC28 GOLD DISC PENDANT WITH CRUCIFORM DESIGN.	131
FIGURE 125 UNC28 TWO IRON BANDS.	131
FIGURE 126 UNC29 COPPER ALLOY FRAGMENTS.	132
FIGURE 127 ARCHIVE PHOTOGRAPH OF UNCLEBY COLLECTION DISPLAY BY GRAVE (YMTH)..	137
FIGURE 128 ARCHIVE PHOTOGRAPH OF UNCLEBY COLLECTION DISPLAY BY GRAVE (YMTH)..	138
FIGURE 129 ARCHIVE PHOTOGRAPH OF UNCLEBY COLLECTION DISPLAY BY GRAVE (YMTH)..	139
FIGURE 130 ARCHIVE PHOTOGRAPH OF UNCLEBY COLLECTION DISPLAY BY GRAVE (YMTH)..	140
FIGURE 131 COPPER ALLOY BOWL FROM GRAVE 31 BEFORE RESTORATION (YMTH).	141
FIGURE 132 SILVER ANNULAR BROOCH (COMPLETE) AND PIN/NEEDLE FROM GRAVE 31.	141
FIGURE 133 ARCHIVE PHOTOGRAPH OF UNCLEBY WEAPONS (YMTH).	142

Appendix 1: Catalogue of objects by grave

Graves and associated objects

ONE	1.1	Glass bead
	1.2	Workbox
	1.3	Openwork Disc
	1.4	Iron Nails
THREE	3.1	Workbox
	3.2	Annular Brooch
	3.3	Beads
	3.4	Beads
	3.5	Beads
	3.6	Silver Ring
	3.7	Silver Ring
	3.8	Silver Ring
	3.9	Knife
FIVE	5.1	Sword
SIX	6.1	Knife
	6.2	Spatula

SEVEN	7.1	Knife
	7.2	Iron Ring
	7.3	Piece of Silver
EIGHT	8.1	Knife
NINE	9.1	Knife
	9.2	Seax
	9.3	Iron Buckle
	9.4	Thin Piece of Bronze
TEN	10.1	Knife
	10.2	Spatula
	10.3	Copper Alloy Buckle
ELEVEN	11.1	Seax
	11.2	Whetstone
	11.3	Bone Handle
	11.4	Hook and Eye
	11.5	Iron Loop(s)
	11.6	Knife

TWELVE	12.1	Bronze Annular Brooch
THIRTEEN	13.1	Beads
	13.2	Iron Buckle
	13.3	Carnelian and Silver Pendant
	13.4	Knife
FIFTEEN	15.1	Knife
SIXTEEN	16.1	Knife (frag)
	16.2	Iron Buckle
TWENTY-TWO	22.1	Knife
	22.2	Knife
TWENTY-THREE	23.1	Knife
	23.2	Iron Buckle
	23.2	Iron Frag
TWENTY-FOUR	24.1	Knife
TWENTY-FIVE	25.1	Bead

TWENTY-SIX	26.1	Knife
	26.2	Iron Rod
	26.3	Iron Rod
	26.4	Small bronze frag
TWENTY-NINE	29.1	Bone Spindle Whorl
	29.2	Stone Spindle Whorl
	29.3	Workbox
	29.4	Workbox Thread
	29.5	Half a Girdle Hanger
	29.6	Spindle Whorl
THIRTY-ONE	31.1	Workbox
	31.2	Workbox
	31.3a	Silver and Garnet Brooch
	31.3b	Silver Pin for brooch
	31.4	Silver Pin/Needle
	31.5	Beads
	31.6	Bronze Bowl
	31.7a	Bronze Buckle
	31.7b	Bronze Sheet Spangle
31.8	Knife	

	31.9	Spatula
	31.10.	Iron Frag(s)
	31.11	Silver Pin
	31.12	Gold Disc Pendant?
THIRTY-TWO	32.1	Knife/Iron Frag
	32.2	Spatula
THIRTY-THREE	33.1	Knife
THIRTY-FIVE	35.1	Bronze Annular Brooch
	35.2	Bronze Annular Brooch
	35.3	Bronze Curved Pin
	35.4	Copper Alloy Ring with Iron
	35.5	Large Iron House Key
	35.6	Girdle Ring
	35.7	Chain
	35.8	Bronze Plate with Iron on it
	36.9	Small bronze pin shaped object'
THIRTY-SEVEN	37.1	Bronze Buckle
	37.2	Red Glass Bead
	37.3	Iron Buckle

THIRTY-EIGHT	38.1	Amethyst
	38.2	Beads
	38.3	Bronze with Wood Inside Frag
	38.4	Bronze with Rivets
	38.5	Quartz Bead
	38.6	Iron Frag(s)
THIRTY-NINE	39.1	Knife
	39.2	Samian ware Necklace
FORTY-ONE	41.1	Knife
FORTY-TWO	42.1	Bronze Buckle
	42.2	Knife
FORTY-THREE	43.1	Bronze Annular Brooch
	43.2	Bronze Safety Pin
	43.3	Bead
FORTY-FOUR	44.1	Iron Buckle
FORTY-FIVE	45.1	Bronze Annular Brooch

	45.2	Knife
	45.3	Bead
FORTY-SIX	46.1	Iron Frags
FORTY-SEVEN	47.1	Iron Buckle
FORTY-EIGHT	48.1	Knife
	48.2	Iron Buckle
FORTY-NINE	49.1	Bronze Buckle
FIFTY	50.1	Knife
FIFTY-TWO	52.1	Knife
	52.2	Spatula
	52.3	Large Nail
FIFTY-THREE	53.1	Iron Buckle
	53.2	Knife (blade)
	53.3	Iron Frag
FIFTY-SIX	56.1	Knife

	56.2	Spatula
FIFTY-SEVEN	57.1	Knife
	57.2	Buckle
	57.3	Buckle
	57.4	Piece of Bronze
	57.4	Piece of Glass
FIFTY-EIGHT	58.1	Bronze Buckle
	58.2	Iron Frag
FIFTY-NINE	59.1	Buckle
	59.2	Pin
	59.3	Rivet Head
SIXTY	60.1	Iron Buckle
	60.2	Knife
	60.3	Bronze Bands with Rivets
	60.4	Small Piece of Bronze
SIXTY-ONE	61.1	Iron Buckle/Strap end
	61.2	Knife
	61.3	Seax

	61.4	Bronze Rivets (7)
	61.5	Wood with single bronze Rivet
SIXTY-TWO	62.1	Beads (12)
	62.2	Bulla Pendant
	62.3	Zoomorphic Brooch
	62.4	Comb
	62.5	Pyramid Mount
	62.6	Silver wire ring (one of a pair?)
	62.7	Knife
	62.8	Penannular Copper Alloy 'ring'
	62.9	Annular Copper Alloy 'ring'
	62.10.	Bone Spindle Whorl
	62.11	Large Keys/Girdle Hanger (2)
	62.12	White Object' (silver?)
SIXTY-THREE	63.1	Iron Frag(s)
SIXTY-FOUR	64.1	Knife
	64.2	Iron Buckle
	64.3	Two Bronze Pieces
SIXTY-FIVE	65.1	Bronze Annular Brooch

	65.2	Small piece of Gold and Garnet
	65.3	Comb
	65.4	Gold Disc Pendant?
SIXTY-SIX	66.1	Silver Ring
	66.2	Beads (s)
	66.3	Iron Buckle
	66.4	Knife
	66.5	Iron Chain
	66.6	Bronze Sheet Fastener
	66.7	Bronze Sheet Fastener
	66.8	Bead
	66.9	Round Polished Stone
	66.10.	Piece of Jet
SIXTY-SEVEN	67.1	Knife
	67.2	Spatula
	67.3	Iron Buckle
SIXTY-EIGHT	68.1	Sword
	68.2	Knife
	68.3	Buckle

I	I.1	Knife
	I.2	Knife
	I.3	Bronze Buckle
	I.4	Iron Buckle
UNASSOCIATED	UNC1	Bead
OBJECTS	UNC2	Bead
	UNC3	Bead
	UNC4	Bead
	UNC5	Beads (2)
	UNC6	Bead
	UNC7	Bone Bead
	UNC8	Bronze Mount with Rivet
	UNC9	Bronze Penannular Ring
	UNC10	Iron Buckle and Tongue
	UNC11	Iron Buckle
	UNC12	Iron Strap end/Buckle
	UNC13	Iron Buckle
	UNC14	Fe Buckle
	UNC15	Seax/Knife
	UNC16	Spatula (?)
	UNC17	Knife
	UNC18	Knife/Blade Frag

UNC19	Girdle Hanger?
UNC20	Knife and Spatula Blades
UNC21	Unidentified Iron Object
UNC22	Whetstone
UNC23	Iron Fragment
UNC24	Unidentified Object
UNC25	Unidentified Object
UNC26	Gold Disc Pendant
UNC27	Gold Disc Pendant

Grave One

MM: "At 29 ft. S by E of centre, a body (1) with the head to the west. A young person laid at full length. At the left shoulder a bronze box having an iron chain attached, with remains of wood round it, and something like iron nails. Below the chin of the skeleton was a glass bead. Inside the box (which had the bottom broken and the lid off) was a piece of bronze (tinned?) something like a wheel in shale 2/3 in. in diameter, apparently intended for attaching the box to the strap. At one point was a bronze peg with which the iron chain had originally been in contact. The box was 1 1/6 in. in height, 2 in. diameter, ornamented on the side with horizontal and zigzag lines of dots, punctured (partially) from the inside, and being left in extreme relief. The lid and bottom had a cruciform pattern of five larger circular prominences, and two circles and cross line of dots, all similarly produced. Burnt earth was all round the burial."

VCH: "The first two graves, of a girl and a woman respectively, contained cylindrical workboxes of bronze of a pattern found frequently in Yorks. ...The first contained a bronze wheel with four spokes and a diameter of 0.9 in. ...[Continued under grave three]" –p. 90

SOA: "At 29 ft. S. by E. of the centre, skeleton of a young person laid at full length, with head to W. Below chin a single glass bead, and at left shoulder a bronze box with wood round it, and iron nails. The box had an iron chain attached, the bottom broken and lid off: cylindrical, height 1 3/4 in. and diameter 2 in. Open herring-bone pattern formed of dots punched from inside, and on the lid a cruciform design of dots with ring in centre and one in each quadrant. Inside the box was found a tinned bronze open-work disc with bronze peg at side probably for attaching the chain. As the bronze cylinders are generally recognized as thread-boxes, it may be concluded that this was a young woman's burial." – p. 149

1.1 Glass Bead (missing)

Material: Glass

Location and Museum Number: Yorkshire Museum Trust, 1947.214*

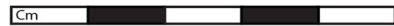
1.2 Workbox

Material: Copper alloy, iron

Dimensions: Body, H: 4.2 cm; D (with lip): 5.1 cm; D (without lip): 4.84 cm; T: 0.04 cm; Lid, H: 2.1 cm; D: 4.87 cm; T: 0.06 cm

Location and Museum Number: British Museum, 1879,1223,1

Description: A cylindrical box, the top of the lid decorated with a cruciform encircled and intersected by punched-dot concentric circles with larger punched dots in the centre of the cross and in the negative space of the arms. The body of the box is decorated with three lines of punched-dots with a herring bone-like pattern in the first two lines. The underside of the body is decorated with a punched-dot cruciform and three concentric circles, the middle circle with a larger punch mark. There are three difference sizes of punches used on the box.



Top



Bottom

Figure 1 Grave 1 workbox.

1.3 Openwork Disc

Material: Iron, Copper Alloy

Dimensions: D: 2.3 cm; T: 0.14 cm

Location and Museum Number: British Museum, 1879,1223,2

Description: A cast iron openwork disc with an encircled cruciform design. The iron was plated with copper alloy, which is now peeling away. A small, straight, copper-alloy peg is attached on the underside under one of the arms of the cross, opposite the peg is a large mass of corroded iron.

Discussion: The disc was described as being located in the workbox, or possibly connecting the chain and workbox. A similar object was recovered from grave 156 at Castledyke (Drinkall 1998, 187 fig. 101, 265). The Castledyke brooch has been dated to the 6th century, if the Uncleby brooch does as well, it may suggest that this

is 'heirloom' artefact, and does not impact the dating of grave 1 (late 7th-early 8th centuries).



Figure 2 Grave 1 openwork disc.

Grave Three

MM: "Just north of 2, a body (3) on left side, bone showing more signs of age than those of 1. The head and shoulders were gone, apparently by putting in No. 1. The head had been to the West, with the body in a contracted position. At the neck of 3, some silver rings and some beads. At the shoulder a buckle. At hip two beads, and before the body a short knife. The hands to the head. Two more beads and a bronze box were near the feet."

VCH: "The other grave contained in addition silver rings and beads of a necklace, and at the shoulder an annular brooch pairing with another found in no. 62."—p. 90

SOA: "At 28 ½ ft. from centre and 6 ft. E. of no. 1, a female skeleton lying on right side, with hands to head and head to W. At the head three silver rings and some beads; at shoulder a bronze buckle; at hips two beads, and in front of body a short knife. Near the feet two more beads and a bronze thread-box 2 ½ in. in diameter, with top and bottom ornamented with concentric rings of dots round a plain centre, and a bronze chain belonging to it. Burnt soil all about the body and 3 ft. behind two large burnt stones in burnt soil."—p. 149

3.1 Workbox

Material: Copper Alloy

Dimensions: Lid, H: 1.7 cm; D (with lip): 5.39 cm; D (without lip): 5.32 cm; T: 0.06 cm; Body, H: 4.65 cm; D (with lip): 5.49 cm; D (without lip): 5.05 cm; T: 0.06 cm; Chain, L: 3.47 cm; W: 0.72 cm; T: 0.16 cm

Description: A cylindrical box with an iron S chain attached. The body of the box is ribbed with no punch decoration. The top of the lid is decorated with punched-dot concentric circles. The underside of the body is decorated with an embossed cruciform encircled with punched dots. A loop has been attached on both pieces where the sheet overlaps.

Location and Museum Number: British Museum, WG.2268



Bottom

Figure 3 Grave 3 workbox.

3.2 Annular Brooch with Animal Heads

Material: Copper Alloy

Dimensions: D: 2.16 cm; T: 0.15 cm

Description: Similar to 1947.205.2, the brooch shows the heads beaked animals with a circle between the beaks to close the gap. The other set of decorative terminals are missing, along with the pin.

Location and Museum Number: Yorkshire Museum, 1947.217.4



Figure 4 Grave 3 annular brooch.

3.3 Beads

Material: Glass

Dimensions:

- | | |
|--------------------------------------|--|
| 1) D: 0.94 cm; T: 0.46 (disc bead) | 2) D: 0.69 cm; T: 0.5 cm (biconical 1) |
| 3) D: 0.65 cm; T: 0.46 (biconical 2) | 4) D: 0.77 cm; T: 0.52 cm (barrel 1) |
| 5) D: 0.75 cm; T: 0.51 cm (barrel 2) | |

Description: A collection of five blue glass beads. The first is the largest and darkest of the collection. Two bright blue biconical beads and two slightly darker barrel-shaped blue beads.

Location and Museum Number: Yorkshire Museum Trust, 1947.217.3



Figure 5 Grave 3 beads.

3.4 Two Glass Beads

Material: Glass

Dimensions:

- | | |
|------------------------------------|-------------------------------------|
| Blue Glass, D: 0.81 cm; T: 0.57 cm | Green Glass, D: 0.73 cm; T: 0.37 cm |
|------------------------------------|-------------------------------------|

Location and Museum Number: Yorkshire Museum Trust, 1947.217.5

Description: Both beads are wound spiral.

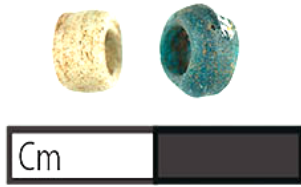


Figure 6 Grave 3 beads. (2:1).

3.5 Beads (unassociated; probably Unc5)

3.6 Silver Slipknot Ring

Material: Silver

Dimensions: Whole, D: 1.8 cm; T: 0.1 cm

Description: A wire ring with a wrapped knot at the top, but no signs of an obvious closure; a break in the wire at the knot.

Location and Museum Number: Yorkshire Museum Trust, 1947.217.2



Figure 7 Grave 3 slipknot ring (one of two).

3.7 Silver Slipknot Ring in three parts

Material: Silver

Dimensions: A) L: 2.17 cm; T: 0.11; B) L: 1.03 cm; T: 0.11 cm; C) L: 1.48 m; T: 0.1 cm

Description: A thin wire ring; the end of A has a slight hook, the other end missing.

Location and Museum Number: Yorkshire Museum Trust, 1947.217.1



Figure 8 Grave 3 slipknot ring (two of two).

3.8 Silver Slipknot Ring (missing)

3.9 Knife

Material: Iron

Dimensions: Whole, L: 8.88 cm; Blade, L: 5.33 cm; W: 1.2 cm; T: 0.53 cm; Tang, L: 3.55 cm; W: 0.93 cm; T: 0.43 cm; Blade Tip, L: 1.71 cm; W: 0.91 cm; T: 0.4 cm

Description: A curve-backed blade with a curved cutting edge, a slight shoulder and prominent choil at the base of the blade. Tapered tang re-attached with traces of the wooden handle. The tip of the blade separated, the object heavily corroded.

Location and Museum Number: Yorkshire Museum Trust, 1947.361



Figure 9 Grave 3 knife.

Grave Five

MM: "4 ft. (from back to back), a body (5) on right side, hands across the body. A double-edged sword in front, with the handle towards the head. The sword was 32 in. long, the handle (tang) 4 ½ in., and the blade 2 ½ in. wide. Near the handle was a piece of bronze. The body was doubled up being 3 ½ ft. from crown to knees, and was in a grave 1 ft. deep."

SOA: "At 4 ft. S. of no. 3, measured from, back to back, a skeleton lying on right side in a grave 1 ft. deep, hands across the middle; contracted position, measuring 3 ½ ft. from crown of head to knees. In front, a two-edged sword 32 in. long and 2 ¼ in. wide; the handle 4 ½ in. long, pointing towards the head, and a piece of bronze adjoining." –p. 149

5.1 Double-edged Sword

Material: Iron

Dimensions: Whole, L: 73.8 cm; W: 5.2 cm

Description: A double-edged sword with tang/handle missing.

Location and Museum Number: Yorkshire Museum, 1947.333.1



Figure 10 Grave 5 sword.

Grave Six

SOA: "At 9 ft. E. of no. 5, measured from knees of no. 5 to back of no. 6, a skeleton lying on left side and contracted, measuring 3 ft. from crown of head to knees, with head to N. Left arm down the side, and right arm projecting from the waist. Under the hip a 'steel', and at waist a knife, with point towards the body."—p. 149

6.1 Knife

Material: Iron

Dimensions: Whole, L: 10.04 cm; Blade, L: 9.16 cm; W: 1.45 cm; T: 0.49 cm; Tang, L: 0.9 cm; W: 0.8 cm; T: 0.51 cm; A) L: 5.01 cm; B) L: 5.03 cm

Description: A strait backed knife with a curved cutting edge and round tip. The blade is broken in half, probably sometime after excavation, and the tip of the tang is missing. There is an anomaly on the choil resulting in a darker and greener discoloration and a smoother surface; the rest of the object is heavily corroded.

Location and Museum Number: Yorkshire Museum Trust, 1947.362



Figure 11 Grave 6 knife.

6.2 Spatula tool (missing/unassociated)

Grave Seven

SOA: "Midway between nos. 5 and 6, a skeleton lying on right side in contracted position, measuring 3 ft. 10 in. from crown of head to knee, with head to N. and hands down the sides. Iron ring and piece of thin silver at the neck, and an iron knife at waist."—p. 149

7.1 Knife (missing/unassociated)

7.2 Ring

Material: Iron

Dimensions: D: 3.3 cm; T: 0.69 cm

Description: A heavily corroded iron ring.

Location and Museum Number: Yorkshire Museum Trust, 1947.374



Figure 12 Grave 7 ring.

7.3 'Thin piece of silver' (missing)

Grave Eight

SOA: "At 6 ft. 7 in. W of the knees of no. 6, a skeleton lying on right side, but facing upwards, head to N.: in contracted position measuring 3 ft. 6 in. from crown of head to knees; right arm stretched down the side, the left crossed over the hip. Knife at right side of hip."—p. 149

8.1 Knife

Material: Iron

Dimensions: Whole, L: 11.17; Blade, L: 8.2 cm; W: 1.84 cm; T: 0.59 cm; Tang, L: 3.06 cm; W: 0.85 cm; T: 0.59 cm

Description: A strait back knife with a convex cutting edge, a prominent choil with a tapered tang attached. The object heavily corroded.

Location and Museum Number: Yorkshire Museum Trust, 1947.355



Figure 13 Grave 8 knife.

Grave Nine

MM: "4 ft. from 8 (knees to knees), a body (9) on right side, head to north, contracted. An iron buckle and knife at the hip. On the right side, the handle towards the head, a long knife, a short sword (a scramasax). 3 in. from end of tang, a thin piece of bronze. Sword 11 ½ in., handle 6 in., single edged 1 2/3 in. wide."

SOA: "At 4 ft. W. of no. 8, measured from knees to knees, a contracted male skeleton, lying on right side with head to N. An iron buckle at hip on right side, and a knife at hip. On right side a single-edged sword-knife (scramasax) with handle up to the head, 11 ½ in. long and 1 ¼ in. wide, the handle being 5 in. At 3 in. from end of tang, a thin piece of bronze."—p. 149

9.1 Knife

Material: Iron

Dimensions: Whole, L: 7.7 cm; A) L: 4.6 cm; W: 1.38 cm; T: 0.47 cm; B) L: 3.1 cm; W: 0.61 cm; T: 0.22 cm

Description: A strait backed knife with a curved cutting edge. The back of the blade is level with the tang, and has a prominent choil on the opposite side. The knife is broken in two pieces, just above the choil. The object is heavily corroded.

Location and Museum Number: Yorkshire Museum Trust, 1947.360



Figure 14 Grave 9 knife.

9.2 Seax

Material: Iron

Dimensions: Whole, L: 40.32 cm; Blade, L: 28.89 cm; W (max.): 3.15 cm; Tang, L: 11.43 cm

Description: An angle-backed blade with attached tang. The surface of the blade appears to have traces of organic matter adhered to it, perhaps remnants of a sheath/scabbard.

Location and Museum Number: Yorkshire Museum Trust, 1947.332



Figure 15 Grave 9 seax.

9.3 Iron Buckle (missing/unassociated)

9.4 'Thin piece of bronze' (missing)

Grave Ten

SOA: "Between nos. 6 and 8, and 2 ft. 9 in. from the latter, measured from knees to knees, a skeleton lying on left side but facing upwards with head to N. The left arm down the side and the right crossed. Bronze buckle to waist belt; and knife and another iron object on left side at the waist."—p. 149-50

10.1 Knife

Material: Iron

Dimensions: Whole, L: 11.35 cm; Blade, L: 8.6 cm; W: 1.9 cm; T: 0.5 cm; Tang, L: 2.75 cm; W: 1.62; T: 1.29 cm

Description: An angle-backed blade with a strait cutting edge, a chip missing on the cutting edge. A portion of the tang and wood handle attached; the knife is heavily corroded with modern restoration.

Location and Museum Number: Yorkshire Museum Trust, 1947.353



Figure 16 Grave 10 knife.

10.2 Spatula Tool

Material: Iron

Dimensions: Whole, L: 9.89 cm; Blade, L: 7.81 cm; W: 1.45 cm; T: 0.58 cm; Tang, L: 2.04 cm; W: 0.92 cm; T: 0.76 cm

Description: A blade with no apparent cutting edge, and with a rounded tip and centered on the wide tang. The lower half of the tang missing, all is heavily corroded.

Location and Museum Number: Yorkshire Museum Trust, 1947.349



Figure 17 Grave 10 spatula tool.

10.3 Copper Alloy Buckle

Material: Copper Alloy

Dimensions: Whole, L: 2.8 cm; Buckle, L: 1.2 cm, W: 2.3 cm; Buckle Plate, L: 2.0 cm; W: 1.8 cm.

Description: An undecorated copper alloy buckle with a D-shaped buckle, and thin sheet of copper alloy folded over the long bar, secured with three rivets at the bottom.

Location and Museum Number: Yorkshire Museum Trust, 1947.218

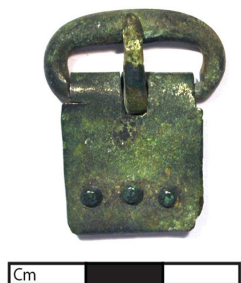


Figure 18 Grave 10 buckle.

Grave Eleven

MM: "36 ft. ESE from centre, head to NNW, a body with single edge sword, 18 in. in blade, 6 ¼ in. handle, and 2 in. wide. A whetstone with the sword lying upon the handle. Body on right side and doubled up. In grave 3 ft. 10 in. by 2 ft. 9 in., and 1 foot deep. Below sword two iron hoops, and bone handle at waist. Close to it some iron articles. At the hip were a flint and steel, the flint showing great signs of use. The steel was hook shaped."

VCH: "Two large whetstones were also found, one standing upright in a crevice of the chalk, the other lying on the handle of the 'scramasax' in a warrior's grave with a much used flint-and-steel at the hip." —p. 91

SOA: "At 36 ft. ESE. Of the centre, contracted skeleton lying on right side with head to WNW., in a grave 3 ft. 10 in. by 2 ft. 9 in. and 1 ft. deep: the hip discoloured by bronze, and one hand at the waist. A scramasax (sword-knife) 18 in. long and 2 in wide, the tang measuring 6 1/8 in. and the handle towards the skull. On this handle a whetstone 12 in, long; two iron loops below the scramasax, and bone handle at waist; close to it some iron like a hook-and-eye, also an iron knife." —p. 150

11.1 Seax

Material: Iron

Dimensions: Whole, L: 61.8 cm; Blade, L: 44.9 cm; W (max.): 5.11 cm; Tang, L: 16.3 cm

Description: A long, single-sided seax, with a prominent guard still attached and tapered tang. Remnants of organic material adhered to the blade and tang.

Location and Museum Number: Yorkshire Museum Trust, 1947.334



Figure 19 Grave 11 seax.

11.2 Whetstone

Material: Sandstone

Dimensions: L: 29.5 cm; W: 4.17 cm-5.28 cm; T: 2.17 cm-3.58 cm

Description: An oblong rectangular stone that tapers in thickness, and is rounded at the end rather than square like the other end. A deep long is incised on the face, running most of the length along one side.

Location and Museum Number: Yorkshire Museum Trust, 1947.343



Figure 20 Grave 11 whetstone.

11.3 'Bone handle'

Material: Bone

Dimensions: L: 6.13 cm; W: 1.81 cm; T: 1.05 cm

Description: The handle has been heavily lacquered sometime in the mid-twentieth century (presumably).

Location and Museum Number: Yorkshire Museum Trust, 2007.6205



Figure 21 Grave 11 'handle'.

11.4 'Iron loops' (missing/unassociated)

*11.5 'Some iron like a hook-and-eye'

Material: Iron

Dimensions: A) L: 5.27 cm W: 4.64 cm; T: 0.51 cm; B) L: 1.61 cm; W: 1.19 cm; T: 0.47 cm; C) L: 3.12 cm; W: 1.19 cm; T: 0.37 cm

Description: Part A is an open, flat square shape with one end terminating in a slight hook whilst the other end is wider and slightly trumpet shaped. Part B is a slam hook, most likely formerly attached to part C that would have made part of an elongated chain.

Location and Museum Number: Yorkshire Museum Trust, 1947.394



Figure 22 Grave 11 'hook-and-eye'.

11.6 Knife (missing/unassociated)

Grave Twelve

SOA: "At 30 ft. WSW. of the centre, a contracted skeleton of person about 20 years of age, lying on the original surface of the barrow E. and W., the head W. and arms down the sides; bones much decayed, on the shoulder a bronze annular brooch with groups of transverse lines." –p. 150

12.1 Annular Brooch with Banding

Material: Copper Alloy

Dimensions: D: 2.59 cm; T: 0.3 cm; Pin: L: 2.63 cm; T: .16 cm

Description: An annular brooch with attached pin. The ring of the brooch has six groups of transverse lines equally spaced around the circumference.

Location and Museum Number: Yorkshire Museum Trust, 1947.215



Figure 23 Grave 12 annular brooch.

Grave Thirteen

MM: "21 ft. WSE from centre, NW by SE, head to west on right side, doubled up, arms decayed. An iron knife and square piece of iron at the waist. At neck, beads and a carnelian pendant set in silver, with loop. Burial a foot above surface."

SOA: "At 24 ft. WSW of the centre, a contracted skeleton lying 1 ft. above the original surface on right side NW. by SE., the head W. and arms much decayed. An iron knife at the waist, also a square piece of iron; at the neck some beads and a silver pendant set with a carnelian." -p. 150

13.1 Beads

Material: Glass

Dimensions:

Red 1) D: 0.91 cm; T: 0.66 cm

Red 2) D: 0.71cm; T: 0.5 cm

Blue 1) D: 0.81 cm; T: 0.6 cm

Blue 2) D: 0.88 cm; T: 0.58 cm

Blue 3) D: 0.84 cm; T: 0.65 cm

Blue 4) D: 0.88 cm; T: 0.64 cm

Blue 5) D: 0.77 cm; T: 0.48 cm

Blue 6) D: 0.84 cm; T: 0.6 cm

Description: A collection of eight beads. The two red beads are cylindrical, while the remaining six blue beads are biconical.

Location and Museum Number: Yorkshire Museum Trust, 1947.210



Figure 24 Grave 13 beads.

13.2 Iron Buckle

Material: Iron

Dimensions: L: 2.67 cm; W: 1.88 cm; T: 1 cm

Description: A rectangular plate, possible folded over, with remnants of textile on front side. A weave and embroidery are visible, probably red and yellow floral motif.

Location and Museum Number: Yorkshire Museum Trust, 1947.342

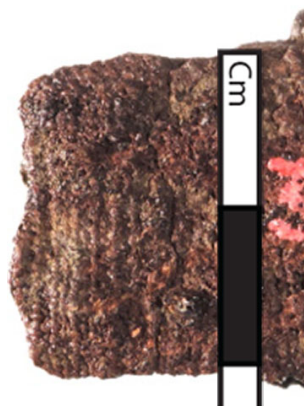
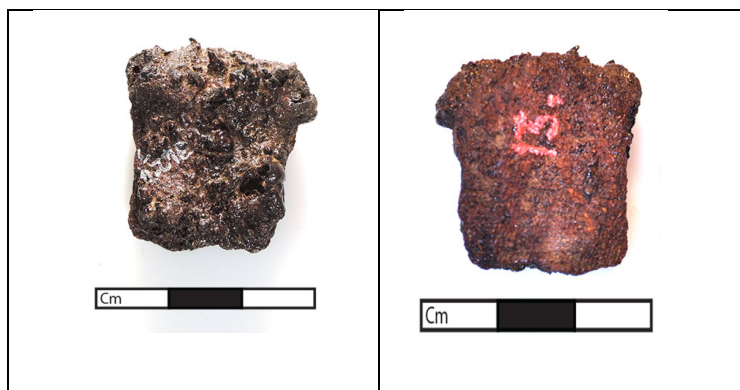


Figure 25 Grave 13 buckle. Top: front and back; bottom: enlarged (2:1) detail showing textile impression.

13.3 Silver and Carnelian Pendant (missing)

13.4 Knife (missing/unassociated)

Grave Fifteen

SOA: "At 25 ft. 6 in. SE. of centre (measured from the head), a contracted skeleton 1 ft. above original surface of the barrow, lying with the hands out and the head to NW. A knife at waist." –p. 150

15.1 Knife

Material: Iron

Dimensions: Whole, L: 13.24 cm; Blade, L: 8.62 cm; W: 1.61 cm; T: 0.75 cm; Tang, L: 4.62 cm; W: 1.05 cm; T: 0.87 cm

Description: An angle-backed blade with a slight concave cutting edge, a prominent choil. The tapered tang re-attached with traces of wood handle. Tip of blade missing, the object heavily corroded.

Location and Museum Number: Yorkshire Museum Trust, 1947.354



Figure 26 Grave 15 knife.

Grave Sixteen

SOA: "At 25 ft. SE. by E. of the centre, a skeleton lying 1 ft. above original surface, on the right side with head to NW., and measuring 3 ft. 3 in. from the crown of the head to the knees; the right hand out from the hip and the left down the side. In front of hip a knife and iron buckle."—p. 150.

16.1 Knife Fragment/Tang

Material: Iron

Dimensions: L: 4.64 cm W: 0.53 cm-1.44 cm; T: 0.66 cm

Description: A flat, rectangular fragment with a tapered and pointed rod attached, the tip of the rod has a slight curve to it. The object is corroded.

Location and Museum Number: Yorkshire Museum Trust, 1947.378



Figure 27 Grave 16 knife tang (?).

16.2 Buckle

Material: Iron

Dimensions: L: 3.17 cm; W: 1.82 cm; T: 0.79 cm

Description: A kidney shaped buckle with tongue still attached, heavily corroded and repaired.

Location and Museum Number: Yorkshire Museum Trust, 1947.381



Figure 28 Grave 16 buckle.

Grave Twenty-Two

SOA: "At 21 ft. SW. of the centre and 1 ½ ft. above original surface, a skeleton lying on right side with head to NW.: right arm down the side, left arm across the waist. Two knives in front of waist." –p. 150

22.1 Knife

Material: Iron

Dimensions: Whole, L: 14.17 cm; Blade, L: 8.55 cm; W: 1.54 cm; T: 0.66 cm; Tang, L: 5.52 cm; W: 1.01 cm; T: 0.66 cm

Description: A concave curve back with convex cutting edge, the back of the blade curves up towards the attached tapered tang, a pronounced choil on the other side. Traces of the wood handle still attached to the tang. The object heavily corroded.

Location and Museum Number: Yorkshire Museum Trust, 1947.358



Figure 29 Grave 22 knife no. 1.

22.2 Knife

Material: Iron

Dimensions: Whole, L: 9.07 cm; Blade, L: 6.08 cm; W: 1.09 cm; T: 0.36 cm; Tang, L: 2.9 cm; W: 0.54 cm; T: 0.27 cm

Description: A curved back with a straight cutting edge, a cross piece just above the tapered tang. The tip of the knife missing, the object heavily corroded.

Location and Museum Number: Yorkshire Museum Trust, 1947.363



Figure 30 Grave 22 knife no. 2.

Grave Twenty-Three

SOA: "At 3 ft. ENE. of no. 17, a skeleton slightly contracted lying on right side and measure 4 ft. 2 in. from the crown of the head to the knees. Iron buckle and knife at waist, and indeterminate piece of iron at the feet."—p. 150

23.1 Knife (missing/unassociated)

23.2 Iron Buckle (missing/unassociated)

23.4 Piece of iron (missing/unassociated)

Grave Twenty-Four

SOA: "At 3 ft. ENE. of no. 23, a contracted skeleton lying on right side and measuring 3 ft. 2 in. from the knee and 4 ft. from the heel to the back of the skull: the right arm strait down, and left hand on the hip. At the waist a knife."—p. 150

24.1 Knife

Material: Iron

Dimensions: Whole, L: 9.69 cm; Blade, L: 7.54 cm; W: 1.1 cm; T: 0.32 cm; Tang, L: 2.15 cm; W: 0.73 cm; T: 0.45 cm

Description: An angle-back blade with a worn/convex cutting edge, the shoulder and choil not very prominent, with a wide, attached tapered tang that still has traces of the wood handle. Heavily corroded.

Location and Museum Number: Yorkshire Museum Trust, 1947.357



Figure 31 Grave 24 knife.

Grave Twenty-Five

SOA: "At 22 ½ ft. SW. of the centre, and 1 ½ ft. above original surface, a head without the body, and behind it a bead."—p. 150

25.1 A glass melon bead (missing)

Description: A photograph of a melon bead exists in the YMTH, which may be the bead from this grave (see appendix 2, fig. 127)

Grave Twenty-Six

SOA: "At 20 ½ ft. SSW. of the centre and 6 ft. E. of no. 25, a skeleton with iron (including a knife) at the waist, and a small piece of bronze; but burial was interfered with on Good Friday and its orientation could not be determined."—p. 151

26.1 Knife

Material: Iron

Dimensions: Whole, L: 9.68 cm; Blade, L: 7.67 cm; W: 1.63 cm; T: 0.63 cm; Tang, L: 2.01 cm; W: 1.09 cm; T: 0.6 cm

Description: A curved back with a strait cutting edge, although the back is not as curved as others in the collection. The blade is attached to a full tang. The tip of the blade and end of the tang missing, and the object is heavily corroded.

Location and Museum Number: Yorkshire Museum Trust, 1947.369



Figure 32 Grave 26 knife.

26.2 Iron Rod

Material: Iron

Dimensions: L: 7.31 cm; W: 0.81 cm; T: 0.38 cm-0.71 cm

Description: A mostly flat, rectangular strip of iron, slightly enlarged at one end with a slight bend at the other. Both ends appear to be broken from another source and the object is heavily corroded.

Location and Museum Number: Yorkshire Museum Trust, 1947.371



Figure 33 Grave 26 iron rod no. 1.

26.3 Iron Rod

Material: Iron

Dimensions: L: 6.6 cm; W: 0.8 cm; T: 0.5 cm

Description: A second rectangular strip of iron, with a slight bend in the structure. Both ends appear to be torn/broken. Heavily corroded.

Location and Museum Number: Yorkshire Museum Trust, 1947.372



Figure 34 Grave 26 iron rod no. 2, top and profile view.

26.4 Small piece of bronze (missing/unassociated)

Grave Twenty-Nine

MM: "At 25 ft. WSE of centre (29) a body on the left side. At the hip a spindle-whorl. At feet two spindle-whorls, stone and bone. In front of waist a bronze box (containing two kinds of thread) with an iron chain and a picklock (key) underneath it. A great amount of burnt earth was round the knees and feet. At the neck was a head. Body of a young person. Some other bones were found about, evidently disturbed for this interment. The box was 1 ¾ in. high, 1 1/3 in. diameter. Sides ornamented with the half punctures made from within and arranged in triangles, with top and bottom horizontal lines. The top had several circles and the bottom a star pattern inside the circle, all of raised dots. A profusion of charcoal around the body."

VCH: "...it may be added that two kinds of thread were found in a 'thread-box' with spindle-whorls in a woman's grave (no. 29)."—p. 91

SOA: "At 25 ft. WSE. of the centre, a skeleton lying o left side. At the feet two spindle-whorls of stone and bone; in front of the waist a cylindrical bronze box 1 ¾ in. high and 2 1/8 in. in diameter with raised dots in concentric rings on top and bottom, and a chevron pattern on the side: it contained two kinds of thread and had an iron chain and half a girdle-hanger underneath. A good deal of burnt earth was found round the knees and feet, and on the neck lay the skull and some other bones of a young person evidently disturbed in digging the later grave."—p. 151

29.1 Bone Spindle Whorl

Material: bone

Dimensions: D: 3.94 cm; T: 1.83 cm

Description: An annular spindle whorl with three incised concentric circles around the surface edge. Some discoloration is apparent on the surface with the incised lines and the underside is very damaged and fragile.

Location and Museum Number: British Museum, OA.4939



Figure 35 Grave 29 spindle-whorl.

29.2 Stone Spindle-Whorl (missing)

29.3 Workbox

Material: Copper Alloy, Iron

Dimensions: Whole, H: 8.17 cm-8.23 cm; Lid, H: 2.3 cm; D (with rim): 5.36 cm; D (without rim): 4.9 cm; T: 0.04 cm; Body, H: 5.1 cm; D (with rim): 5.22 cm; D (without rim): 4.74 cm; T: 0.05 cm; Chain, L: 2.98 m; T: 0.88 cm

Description: A cylindrical box with iron chain attached, each end slightly convex. The top of the lid decorated with punched concentric ring circles, with the surface decorated with punched three dotted lines. The body decorated with punched dotted chevrons. The bottom of the body is moderately convex with a punched cruciform design surrounded with concentric circles. The sheets of metal have been wrapped and secured by the folded lip on either end, with the chain attached at the overlap for extra stability.

Location and Museum Number: Yorkshire Museum Trust, 1947.220



Top

Bottom

Figure 36 Grave 29 workbox.

29.4 Work Box Threads

Material: Flax, Wool, Leather

Dimensions: N/A

Description: A collection of threads and textile fragments, including a wound ball of undyed flax thread; a wound collection of dark blue/green woolen thread; a small collection of red woolen thread; a small collection of yellow/golden coloured woolen thread; collection of small fragments of dark/black woolen threads; three small fragments of textile; fragments of leather, possible lamb or deer hide.

Museum Location and Number: Yorkshire Museum Trust, 1947.220.2



Figure 37 Grave 29 threads and textiles from workbox 29.4. Enlarged not to scale.

29.5 Girdle-Hanger (missing/unassociated)

29.6 Spindle-Whorl (missing)

Grave Thirty-One

MM: "Immediately behind this [no. 29] another body (31) in same position. In front of waist a bronze box. In front of neck a silver buckle (brooch) and a silver pin. Between box and brooch some iron. In front of waist a knife and steel. A bronze box between detached thigh and leg bone. Upon the hips of 31 a bronze bowl, and with it a bronze buckle. The bowl was 13 ½ in. in diameter and 3 ½ in. deep, and had a moveable handle (extended U-Shaped). The bowl stood upon a ring having three feet."

VCH: "Similar but richer was grave no. 31, where a bronze box lay at the waist; a brooch and pin both of silver, beads of a necklace with a gold pendant in the middle; and knife and 'steel' for sharpening it at the waist, and another box (probably a 'thread-box') near the knee. The pendant is ornamented with a broad band of C scrolls in filigree, but now without the central setting..."

"In the same grave a bronze bowl was found on the hips with a buckle of the same metal. The openwork ornamentation of the buckle-plate recalls finds in Kent, as does the bow, which was provided with a separate tripod stand..."—p. 90-91

SOA: "Immediately behind no. 30, a skeleton lying in the same attitude and direction, with a bronze box in front of the waist, and in front of the neck an annular brooch of silver measuring 1.7 in. across and set with garnets; also a silver pin, beads and a gold pendant in the centre. Between the box and brooch lay some iron, and in front of the waist a knife and steel for sharpening. Between the thigh and shin-bone another bronze box, and on the hips a bronze bowl 13 ¼ in. in diameter and 3 ½ in. deep with drop-handles and a ring stand on three feet. A bronze buckle found in this grave has an openwork plate and is, like the bowl, of Kentish type."—P. 151

31.1 Workbox (missing)

*31.2 Workbox (missing)

31.3a Silver Annular Brooch with Garnet

Material: Silver, Garnet

Dimensions: Whole, D: 3.34 cm; W: 0.52 cm; T: 0.12 cm; Garnet, D: 0.34 cm; Terminals; W: 0.6 cm

Description: A flat, circular brooch with animal head terminals. The left facing terminal has a cabochon cut garnet or glass in a silver braided setting, only half of which remains. The tip of the terminal is missing. The opposite side is missing the stone and setting, with only the supporting plate and rivet remaining. The body of the brooch is rounded with indented lines running around the inner and outer circumference. The reverse of the object has no decoration, but the backs of both terminals have silver backings, probably soldered, in which the rivet holes are visible.

Location and Museum Number: Yorkshire Museum Trust, 1947.209.4



Figure 38 Grave 31 annular brooch

31.3b Silver Pin (for brooch 33.3)

Material: Silver

Dimensions: Whole, L: 2.9 cm; T: 0.2 cm

Description: The circular eye is separate from the shaft and in two pieces.

Location and Museum Number: Yorkshire Museum Trust, 1947.209.2



Figure 39 Grave 31 pin from brooch 31.3a.

31.4 Silver Pin/Needle

Material: Silver

Dimensions: Whole, L: 4.07 cm; T: 0.16 cm; Loop, D: 0.32 cm

Description: The circular eye has a small band below it, the tip and eye have been reattached.

Location and Museum Number: Yorkshire Museum Trust, 1947.209.3



Figure 40 Grave 31 pin/needle.

31.5 Beads

Material: Glass

Dimensions:

Red 1) D: 0.98 cm; T: 0.84 cm

Red 2) D: 0.81 cm; T: 0.74 cm

Blue 1) D: 0.86 cm; T: 0.44 cm

Blue 2) D: 0.8 cm; T: 0.34 cm

Green D: 0.78 cm; T: 0.51 cm

Description: A collection of five beads; two red barrel-shaped beads, two blue glass thin annular beads and one opaque green glass melon bead (sometimes referred to as a gadrooned bead).

Location and Museum Number: Yorkshire Museum Trust, 1947.209.1



Figure 41 Grave 31 beads; two views.

31.6 Copper Alloy Bowl

Material: Copper Alloy

Dimensions: D: 31.2 cm; H: 11.2 cm

Description:

Location and Museum Number: Yorkshire Museum Trust, 2011.220



Figure 42 Grave 31 bowl: three views, not to scale.

31.7a Openwork Buckle

Material: Copper Alloy

Dimensions: Whole, L: 5.35 cm; W: 1.94 cm; T: 0.1 cm

Description: Cast as a single piece, with the exception of the attached tongue. The openwork plate is decorated with a cut cruciform in the centre with inverted steps on either side and ring and dot repetitively stamped to the surface. The edges of the plate are gadrooned. The bottom of that plate has been damaged and repaired in Anglo-Saxon times, however the tip is still missing.

Location and Museum Number: Yorkshire Museum Trust, 1947.213.2



Figure 43 Grave 31 buckle.

31.7b Backplate for openwork buckle

Material: Copper Alloy

Dimensions: Whole, L: 3.34 cm; W: 1.59 cm; T: 0.07 cm

Description: In two pieces; a thin, triangular sheet of copper alloy with three punched holes in the corners that correspond with the two uppermost holes in the openwork buckle (31.7).

Location and Museum Number: Yorkshire Museum Trust, 1947.213.1



Figure 44 Grave 31 backplate for buckle 31.7a.

31.8 Knife

Material: Iron

Dimensions: Whole, L: 12.27 cm; Blade, L: 7.88 cm; W: 1.12 cm-2.5 cm; T: 0.64 cm;
Tang, L: 4.39 cm; W: 0.62 cm-1.03 cm- T: 0.72 cm

Description: A humpback blade with a strait cutting edge, the tip of the blade missing. The tapered tang attached to the blade, with traces of wood or horn handle visible.

Location and Museum Number: Yorkshire Museum Trust, 1947.347



Figure 45 Grave 31 knife.

31.9 Spatula Tool (missing/unassociated)

31.10 'Some Iron' (missing/unassociated)

31.11 Silver Pin/Needle (missing)

Grave Thirty-Two

SOA: "At 18 ft. 10 in. SE. of the centre, a skeleton at full length with head to W.: a piece of iron and a steel for sharpening at the waist."—p. 151

32.1 Knife (missing/unassociated)

32.2 Spatula Tool (missing/Unassociated)

Grave Thirty-Three

SOA: "At 36 ft. S. by E. of the centre, a man's skeleton lying in the right side with head to W. in a grave 3 ft. 10 in. by 2 ft. 8 in., and 10 in. deep: the hands stretched out from the body, and at the waist a knife."—p. 151

33.1 Knife (missing/unassociated)

Grave Thirty-Five

MM: "At 20 ½ ft. WSW from the centre a body (35) on left side with head to W., loosely contracted. Some iron at the waist. Two bronze buckles in front of face. Body midway between 29, 30 and 31. 4 ft. 6 in. from back of head to heel. At the waist a large iron house key with two bronze rings and a small loop of iron. A large piece of bronze lay under the key, midway, and there was also a small curved bronze pin."

VCH: "In grave no. 35 two bronze annular brooches, under 1 in. in diameter, were found in front of the face: the hoop was quite plain and of circular section..."—p. 91

SOA: "At 20 ½ ft. WSW. of the centre, a loosely contracted skeleton lying on the left side with head to W., and measuring 4 ft. 6 in. from back of head to heel. In front of the face two plain annular brooches and in front of waist an iron girdle-hanger and two girdle-rings with remains of a chain lying on a bronze plate with iron on it. A small bronze pin-shaped object has since been lost: the body was midway between no. 29 and nos. 30, 31."—p. 151

35.1 Annular Brooch

Material: Copper Alloy

Dimensions: D: 2.39 cm; T: 0.24 cm; L: (pin) 2.41 cm

Description: Plain annular brooch with the pin still attached.

Location and Museum Number: Yorkshire Museum Trust, 1947.200.3



Figure 46 Grave 31 annular brooch
(one of a pair).

35.2 Annular Brooch

Material: Copper Alloy

Dimensions: D: 2.35 cm; T: 0.24 cm; L: (pin) 2.48 cm

Description: Plain annular brooch with the pin still attached. The pin is bent in the middle.

Location and Museum Number: Yorkshire Museum Trust, 1947.200.4



Figure 47 Grave 35 annular brooch (one of a pair).

35.3 Bronze Curved Pin/Fastener

Material: Copper Alloy

Dimensions: Whole, L: 3.0 cm; W: 0.4-0.5 cm

Description: A simple, folded and bent length of wire with a flattened end that has a hole punched through it, the other end curved to fit through the closure.

Location and Museum Number: Yorkshire Museum Trust, 1947.393



Figure 48 Grave 35 curved pin/fastener.

35.4 Copper Alloy Ring

Material: Copper Alloy, Iron

Dimensions: D: 4.8 cm; T: 0.5 cm

Description: A copper alloy ring with interior indentation evenly spaced; a piece of iron wrapped around the ring, perhaps once part of a chain?



Figure 49 Grave 35 ring.

35.5 'Large Iron House Key' (missing)

35.6 'Girdle Ring' (missing/unassociated)

35.7 Chain (missing/unassociated)

35.8 'Bronze plate with iron on it' (missing/unassociated)

35.9 'Small bronze pin-shaped object' (lost)

Grave Thirty-Seven

VCH: A brief mention of the brooch, p. 91

SOA: "At 33 ½ ft. S. of the centre, and 3 ½ ft. W. of no. 33, a skeleton of a young woman lying on the right side E. and W. with head to W., in a grave 3 ft. 6 in. by 2 ft. 4 in., and 9 in. deep. The hands in front of the face and behind the head an iron buckle; behind the shoulder a bronze buckle with transverse lines on the hoop and in front of the face a red glass bead."—p. 151

37.1 Buckle and Plate

Material: Copper Alloy, Gild

Dimensions: Whole, L: 2.8 cm; Buckle, L: 2.5 cm; W: 1.35 cm; T: 0.38 cm; Tongue, L: 1.47 cm; W: 0.11 cm; T: 0.26 cm; Plate, L: 1.85 cm; W: 1.94 cm; T: 0.35 cm

Description: A D-shaped buckle with six sets of three line-bands equally spaced along the surface of the buckle, the tongue and plate attached. The plate decorated with five stamped line in the centre cutting across the surface, with four rivet holes below and a faint line stamped below the holes, the bottom edge of the buckle finished with minute scalloping on the front plate. The back of the plate is plain with no decoration. Both sides of the plate have been gilded, most likely using the fire-gilding (or mercury gilding) technique. There are no traces of gilding on the buckle or tongue.

Location and Museum Number: Yorkshire Museum Trust, 1947.200.6



Figure 50 Grave 37 buckle. (2:1).

37.2 Polychrome Globular Glass Bead

Material: Glass

Dimensions: D: 1.19 cm; T: 0.64 cm

Description: A dark blue or black with white waves running diagonally from the perforation and red trailing spiraling the body.

Location and Museum Number: Yorkshire Museum Trust, 1947.200.5



Figure 51 Grave 37 polychrome bead (2:1).

37.3 Buckle

Material: Iron

Dimensions: D: 2.9 cm; T: 0.45 cm

Description: A circular buckle that is broke four pieces, with the cross piece/tongue attached.

Location and Museum Number: Yorkshire Museum Trust, 1947.337



Figure 52 Grave 37 buckle.

Grave Thirty-Eight

MM: "At 15 ½ ft. SW. by W., body (38) on right side, head to west. Near the waist some bits of iron. At back of head, but disturbed by plough, bronze with wood inside it. At neck two amethyst stones, a quartz bead, and 7 glass beads. Some bronze with rivets near shoulder. Body doubled up but so decayed that position was not made out. A young person just cutting 'wisdom' teeth."

VCH: "Among the jewellery should be noticed amethysts (as in Kent) strung with quartz and glass beads on a young woman's necklace (grave no. 38)."—p. 91

SOA: "At 15 ½ ft. SW. by W. of the centre, a contracted skeleton lying on the right side with head to W., but much decayed. Near the waist some iron, and behind the head some bronze with wood inside it; at the neck two amethyst beads and seven blue glass beads, and near the shoulder some bronze with rivets."—p. 151-2

38.1 Two Amethyst Beads

Material: Amethyst

Dimensions: 1) L: 1.74 cm; W: 1.22 cm; T: 0.61 cm. 2) L: 3.05 cm; W: 1.15 cm; T: 0.86 cm

Description: A pair of carved amethyst beads. The first is a flat tear shape with a hole drilled lengthwise through the body. The stone is a consistent light purple, with distinct marks. The second bead is an oblong tear shape, with one side worked into a dull corner. The colour of the stone fades to white at the narrow end of the bead.

Location and Museum Number: Yorkshire Museum Trust, 1947.201.1



Figure 53 Grave 38 amethyst beads.

38.2 Beads

Material: Glass, Ceramic(?)

Dimensions:

Dark Blue 1) D: 1.12 cm; T: 0.57 cm

Dark Blue 2) D: 1.01 cm; T: 0.45 cm

Dark Blue 3) D: 1.01 cm; T: 0.45

Dark Blue 4) D: 0.82 cm; T: 0.45 cm

Light Blue Glass D: 0.69 cm; T: 0.54

Light Blue faience (?) D: 0.69; T: 0.54 cm

Green faience (?) D: 0.67 cm; T: 0.79 cm

Description: A group of seven polychrome beads. There are four dark blue glass beads, the largest being globular and the others being annular in shape. The Light blue glass bead is also annular. Two cylindrical beads, one light blue and the other green, have the appearance of faience, or another type of glazed ceramic.

Location and Museum Number: Yorkshire Museum Trust, 1947.201.2



Figure 54 Grave 38 beads.



Figure 55 Detail of non-glass beads from grave 38. (2:1)

38.3 'Some bronze with wood inside it'

Material: Copper Alloy, Wood

Dimensions: L: 1.71 cm; W: 1.47 cm; T: 0.42 cm

Description: The fragment of a sheet of copper alloy with punched dots that has been wrapped around a piece of wood.

Location and Museum Number: Yorkshire Museum Trust, 1947.201.3



**Figure 56 Grave 38 unidentified
copper alloy and wood fragment.**

38.4 'Bronze with rivets' (missing)

38.5 Quartz Bead (missing)

38.6 'Some iron' (missing/unidentified)

Grave Thirty-Nine

MM: "At 40 ft. SSE a body in grave NW and SE, grave 2 ft. wide and just large enough for the body. Head to NW., hands on hip. In front of the hip a knife. At neck a piece of Samian ware in a necklace. 2 ft., 6 in. back of head to knees."

SOA: "At 40 ft. SSE. of centre, a contracted skeleton of a young person just cutting wisdom-teeth, and measuring 2 ft. 6 in. from back of head to knees: it lay NW. and SE. in a grave just large enough to contain it, 2 ft. wide and 1 ft. deep with the head to NW. The hands rested on the hip and in front of the hip was a knife: at the neck a piece of Samian ware on a necklace."—p. 152

39.1 Knife

Material: Iron

Dimensions: Whole, L: 10.68; Blade, L: 7.88 cm; W: 1.61 cm; T: 0.54 cm; Tang, L: 3.35 cm; W: 0.69 cm; T: 0.36 cm

Description: A curve-backed blade with a strait cutting edge, a tapered tang re-attached. The tip of the blade missing, the knife heavily corroded.

Location and Museum Number: Yorkshire Museum Trust, 1947.352



Figure 57 Grave 39 knife.

39.2 Samian ware 'Necklace' (missing)

Grave Forty-One

SOA: "At 29 ft. E. of the centre, a contracted skeleton lying on the left side, very much decayed: a knife at the hip."—p. 152

41.1 Knife (missing)

Grave Forty-Two

SOA: "At 24 ft. W. by S. of the centre, a contracted skeleton of a young person just cutting wisdom-teeth, lying on the left side with head to W.: a knife and small bronze buckle at the waist."—p. 152

42.1 Copper Alloy Buckle

Material: Copper Alloy

Dimensions: Whole, L: 2.47 cm; Plate, L: 2.1 cm; W: 1 cm; T: 0.26 cm; Buckle, L: 0.64 cm; W: 1.43 cm; T: 0.2 cm

Description: A D-shaped buckle with attached to a triangular plate that has been folded over and connected with a rivet at the tip. The back of the plate shows considerably corrosion and breaks in the plate on the upper area near the buckle and the lower tip where the rivet is.

Location and Museum Number: Yorkshire Museum Trust, 1947.202



Figure 58 Grave 42 buckle.

42.2 Knife

Material: Iron

Dimensions: Whole, L: 8.88 cm; Blade, L: 5.68 cm; W: 1.02 cm; T: 0.48 cm; Tang, L: 3.2 cm; W: 0.86 cm; T: 0.51 cm

Description: An angle-back blade with a concave cutting edge and pronounced choil, with a wide tang attached. Traces of wood or horn handle, the rest heavily corroded.

Location and Museum Number: Yorkshire Museum Trust, 1947.351



Figure 59 Grave 42 knife.

Grave Forty-Three

VCH: "With an annular brooch...bearing animal-head terminals, was associated in grave no. 43 a peculiar brooch under 1 in. long with a broad flat body stamped with rings, and a coiled spring on one side of the head."—p. 91

SOA: "At 19 ft. WSW. of the centre, a skeleton of a young person just cutting wisdom-teeth, lying on the right side with head to W.: the left hand on the hip and the right arm down the side. At the neck a bronze annular brooch ornamented with animal-heads, and a roughly made striped bead; at the hip a bronze brooch of safety-pin pattern, nearly 1 in. long, the bow ornamented with punched dots."—p. 152

43.1 Annular Brooch

Material: Copper Alloy

Dimensions: D: 2.47 cm; T: 0.21 cm. Pin: L: 2.48 cm; T: 0.14 cm

Description: One terminal zoomorphic feature missing, the other corroded and thinner than the ring. Groups of banding above the terminal, on either side of the pin and in between. The pin still attached and settled in a groove of the ring.

Location and Museum Number: Yorkshire Museum Trust, 1947.211.1



Figure 60 Grave 43 annular brooch.

43.2 Safety-Pin Brooch

Material: Copper Alloy

Dimensions: L: 2.42 cm, W: 1.12 cm; T (plate): 0.09 cm; T (wire): 0.13 cm

Description: A wire that has been bent and coiled, with one half flattened and cut to act as the face and fastening mechanism, the surface of which has been decorated with punched circles along the edges.

Location and Museum Number: Yorkshire Museum Trust, 1947.211.3



Figure 61 Grave 43 'safety pin' brooch.

43.3 Polychrome Globular Glass Bead

Material: Glass

Dimensions: D: 1.57 cm; T: 0.81 cm

Description: A brown glass bead streaked with yellow and green.

Location and Museum Number: Yorkshire Museum Trust, 1947.211.2



Figure 62 Grave 43 polychrome bead. (2:1)

Grave Forty-Four

SOA: "At 29 ½ ft. E. of the centre and about 6 in. above the original surface, a skeleton of a young man with wisdom-teeth lying on the right side with head to W.: the left arm down in front, but the right and other limbs much decayed and possibly disturbed. An iron buckle lay above the hips, but perhaps not in the original place."—p. 152

44.1 Iron Double-Tongue Buckle

Material: Iron

Dimensions: Whole, L: 5.0 cm; T: 0.9 cm; Plate, W: 3.1 cm; Buckle, W: 3.9 cm

Description: An iron buckle and plate'; the buckle with two tongues. Heavily corroded.

Museum and Location Number: Yorkshire Museum Trust, 1947.336



Figure 63 Grave 44 buckle.

Grave Forty-Five

SOA: "At 17 ft. 8 in. W. of the centre, a loosely contracted skeleton lying on the left side with head to W., the hands clasped in front of the waist. At the breast an annular brooch, 1.1 in. across, with animal-head terminals; under the chin a glass bead, and a knife."—p. 152

45.1 Annular Brooch

Material: Copper alloy

Dimensions: D: 2.77 cm; T: 0.21 cm

Description: Similar to 43.1, the ring is broken above one of the terminals, and the pin is now missing.

Location and Museum Number: Yorkshire Museum Trust, 1947.212.4



Figure 64 Grave 45 annular brooch.

45.2 Knife (missing/unassociated)

45.3 Bead (missing/unassociated)

Grave Forty-Six

SOA: "At 29 ½ ft. E. by N. of the centre, remains of a skeleton with head to W. but partly disturbed. Some pieces of iron noticed."—p. 152

46.1 'Some pieces of iron' (missing/unassociated)

Grave Forty-Seven

SOA: "At 26 ft. W. by N. of the centre, a skeleton of full age, lying on the left side with head to W.: and iron buckle on the left side at waist."—p. 152

47.1 Iron Buckle (missing/unassociated)

Grave Forty-Eight

SOA: "At 38 ft. E. by N. of the centre, a man's skeleton lying on the right side with head to W. in a shallow grave 4 ft. long and 2 ½ ft. wide: at the breast a knife and iron buckle."—p. 152

48.1 Knife (missing/unassociated)

48.2 Iron Buckle (missing/unassociated)

Grave Forty-Nine

SOA: "At 38 ft. ENE of the centre, the skeleton of a middle-aged woman, slightly contracted, lying on the right side with head to W. in a grave 4 ft. 6 in. by 2 ft. 3 in. and 1 ft. deep: at the waist a small bronze buckle."—p. 152

49.1 Copper Alloy Buckle

Material: Copper Alloy

Dimensions: Whole, L: 2.29 cm; Buckle, L: 0.84 cm; W: 1.53 cm; T: 0.81 cm; Tongue, L: 1.29 cm; T: 0.77 cm; Plate, L: 1.55 cm; W: 1.16 cm; T: 0.11

Description: A D-shaped buckle with tongue attached. The surface of the plate decorated with a set of parallel lines that run down the centre of the body, three rivets at the bottom. The back of the plate shows considerable deterioration and possible repairs.

Location and Museum Number: Yorkshire Museum Trust, 1947.205.1



Figure 65 Grave 49 buckle, front and back.

Grave Fifty

SOA: "At 29 ft. NW. by W of the centre, a skeleton with head on the right side and a knife at the waist."—p. 152

50.1 Knife (missing/unassociated)

Grave Fifty-Two

SOA: "At 20 ft. NW. of the centre, a bone or two but no trace of the skull; a knife, steel for sharpening and a large nail (?). Much burnt earth in this part."—p. 152

52.1 Knife

Material: Iron, bone/horn

Dimensions: (A) L: 12.22 cm; Blade, L: 10.67 cm; W: 1.86 cm; T: 0.59 cm; (B) L: 8.93 cm; W: 1.39 cm-2.79 cm; T: 1.25 cm

Description: An angled back blade with a strait cutting edge, a prominent crosspiece below the blade. The rattail tang has a fair amount of the bone or horn handle attached. The object is broken in two pieces with the break below the crosspiece. The blade is heavily corroded with very large protrusions, perhaps remnants of a sheath.

Location and Museum Number: Yorkshire Museum Trust, 1947.364



Figure 66 Grave 53 knife blade (top) and handle (bottom).

52.2 Spatula Tool (missing/unassociated)

52.3 'Large Nail' (missing? This may be referring to the handle of knife 52.1)

Grave Fifty-Three

SOA: "At 23 ½ ft. NE. by E. of the centre, a skeleton lying on the right side: at the waist an iron buckle, a knife, and a small piece of iron like a pin,"—p. 152

53.1 Buckle

Material: Iron

Dimensions: L: 3.06; W: 1.82 cm; T: 0.7 cm

Description: An oval shaped buckle with tongue attached, heavily corroded.

Location and Museum Number: Yorkshire Museum Trust, 1947.380



Figure 67 Grave 53 buckle.

53.2 Knife (blade only)

Material: Iron

Dimensions: Whole, L: 9.92 cm; Tip, L: 2.04 cm; W: 1.23 cm; T: 0.51 cm; Body, L: 7.88 cm; W: 2.26 cm; T: 0.62 cm

Description: A curved/angle-back blade with a straight cutting edge, the tip separated from the rest of the blade. The object is heavily corroded.

Location and Museum Number: Yorkshire Museum Trust, 1947.377



Figure 68 Grave 53 knife blade.

53.3 'Small piece of iron like a pin' (missing/unassociated)

Grave Fifty-Six

SOA: "At 22 ft. W. by N. of the centre, part of a skull, and close to it a knife, steel for sharpening, and piece of iron; very few other bones but much burnt matter."—p. 153

56.1 Knife

Material: Iron

Dimensions: Whole, L: 10.33 cm; Blade, L: 6.69 cm; W: 2.05 cm; T: 0.55 cm; Tang, L: 3.64 cm; W: 1.04 cm; T: 0.49 cm

Description: A curved back with a strait cutting edge, the back of the knife flows seamlessly to the tapered tang, with a slight choil on the opposite side and traces of wood on the tang. Along the back of the blade is a smooth, thick layer that may be part of a sheath. The tip of the tang is broken, and the entire object is heavily corroded.

Location and Museum Number: Yorkshire Museum Trust, 1947.368



Figure 69 Grave 56 knife.

56.2 Spatula Tool

Material: Iron

Dimensions: Whole, L: 14.65 cm; Blade, L: 9.24 cm; W: 1.75 cm; T: 0.87 cm; Tang, L: 1.14 cm; W: 1.14 cm; T: 1.11 cm

Description: A blade with no apparent cutting edge and rounded tip that has a slight curve; a tapered tang attached. Modern repair where the tang was re-attached to the blade, heavily corroded.

Location and Museum Number: Yorkshire Museum Trust, 1947.350



Figure 70 Grave 56 spatula tool.

56.3 'Piece of Iron' (missing/unassociated)

Grave Fifty-Seven

SOA: "At 30 ft. NW. of the centre, the skeleton of an old woman laid on the original surface at full length, with the head to W. At the waist two buckles, a knife and piece of bronze that may have attached the knife-sheath to the girdle; a piece of glass near the left hip."— p. 153

57.1 Knife

Dimensions: Whole, L: 7.8 cm; Blade, L: 6.47 cm; W: 1.09 cm; T: 0.66 cm; Tang, L: 1.33 cm; W: 0.76 cm; T: 0.28 cm

Description: An angled-back blade with a worn/curved cutting edge, a portion of the tang attached. The object heavily corroded.

Location and Museum Number: Yorkshire Museum Trust, 1947.370



Figure 71 Grave 57 knife.

57.2 Buckle (missing/unassociated)

57.3 Buckle (missing/unassociated)

57.4 'Piece of bronze' (missing/unassociated)

57.5 'Piece of glass' (missing)

Grave Fifty-Eight

SOA: "At 24 ft. 6 in. NW. by W. of the centre, a skeleton lying on the right side with head to W.: a knife and bronze buckle at hip."—p. 153

58.1 Copper Alloy Buckle without plate

Material: Copper Alloy

Dimensions: L: 0.91 cm; W: 1.84 cm; T: 0.23 cm. Tongue L: 1.18 cm; T: 0.21 cm

Description: D-shaped buckle with tongue attached.

Location and Museum Number: Yorkshire Museum Trust, 1947.203



Figure 72 Grave 58 buckle .

58.2 Iron 'knife'/miscellaneous

Material: Iron

Dimensions: L: 6.84 cm; W: 1.39 cm; T: 0.61 cm

Description: A fragment of iron, possibly a blade; one end that comes to a point, and the other end curves down, terminating in a break.

Location and Museum Number: Yorkshire Museum Trust, 1947.383

Top View



Profile View



Figure 73 Grave 58, illustration of unidentified iron object (knife blade?).
Illustration by N. Griffiths. (photograph not available).

Grave Fifty-Nine

SOA: "At 29 ½ ft. NE. of the centre, a skeleton lying on the right side, the left hand out from the side; at the hip a buckle, pin, and nail-head; at the feet a stone."—p. 153

59.1 Buckle (missing/unassociated)

59.2 Pin (buckle tongue?) (missing/unassociated)

59.3 'Nail-Head'

Material: Iron

Dimensions: D: 1.76 cm; T: 0.42 cm

Description: A flattened, circular and convex object with a slight protrusion on the underside, probably the remains of a nail rod. The object corroded.

Location and Museum Number: Yorkshire Museum Trust, 1947.388



Figure 74 Grave 59 'nail head'.

Grave Sixty

SOA: "At 31 ft. NW. by N. of the centre, and 9 ft. N. of no. 58 (measured from head to head), a skeleton lying on the right side with head to N., and left arm out from the body. In front of the breast some thin bronze bands with rivets and wood, above the left hand; at the waist an iron buckle and knife, and in front of the knee to small pieces of bronze, each forming three sides of an oblong, among some black matter."—p. 153

60.1 Iron Buckle

Material: Iron

Dimensions: L: 2.76 cm; W: 1.55 cm; T: 0.67

Description: An oval shaped buckle with tongue still attached, heavily corroded.

Location and Museum Number: Yorkshire Museum Trust, 1947.382

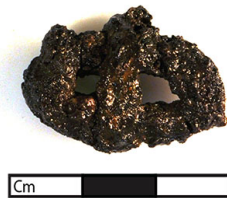


Figure 75 Grave 60 buckle.

60.2 Knife

Material: Iron

Dimensions: Whole, L: 12 cm; W: 1.84 cm; T: 0.84 cm

Description: An angled-back blade with straight cutting edge; most of the wide tang attached with traces of wood. The object is heavily corroded.

Location and Museum Number: Yorkshire Museum Trust, 1947.379



Figure 76 Grave 60 knife.

60.3 'Thin bronze bands with rivets' (missing)

60.4 'small pieces of bronze, each forming three sides of an oblong' (missing)

Grave Sixty-One

MM: "At 26 ft. N. by W., body (61) on right side, head to north by west. Iron buckle and knife at waist, handle towards head. A sword at the back, 10 ½ in. blade, 4 ½ in. tang, 1 1/8 in. wide, point rounded. Handle upwards to head. On handle remains of wood with bronze rivet. At scabbard end several bronze rivets in remains of wood."

SOA: "At 26 ft. N. by W. of the centre, the skeleton of a man about 28 years old, lying on the right side with head to N. by W. An iron buckle and knife at the waist, and behind the back a scramasax (sword-knife) 10 ½ in. long, 1 1/8 in. wide, with tang 4 ½ in. long; the point rounded, and the handle towards the skull. Remains of wood with a single bronze rivet on the handle, and at the end of the scabbard seven bronze rivets and wood."—p. 153

61.1 Iron Buckle

Material: Iron

Dimensions: L: 2.67; W: 1.88 cm; T: 0.87 cm

Description: A double, possibly folded, plate, with rounded corners and end, heavily corroded.

Location and Museum Number: Yorkshire Museum Trust, 1947.341



Figure 77 Grave 61 buckle, front and back.

61.2 Knife

Material: Iron

Dimensions: Whole, L: 16.2 cm; Blade, L: 10.7 cm; W: 2.36 cm; T: 0.29 cm; Tang, L: 5.48 cm; W: 1.02 cm; T: 0.47 cm

Description: A straight back blade with a curved cutting edge with impressions of textile visible near the tip on facing side. The tapered tang separated from the blade with modern repairs made, the tip of the blade missing.

Location and Museum Number: Yorkshire Museum Trust, 1947.346



Figure 78 Grave 61 knife with detail of textile impression.

61.3 Seax

Material: Iron

Dimensions: Whole, L: 42.5 cm; Blade, L: 31.4 cm; W (max.) 4.4 cm; Tang, L: 8.9 cm

Description: An angled-back blade with straight cutting edge; the guard and tang still attached. Traces of the organic handle present, as well as remnants of the sheath on the blade.

Location and Museum Number: Yorkshire Museum Trust, 1947.333.2



Figure 79 Grave 61 seax.

61.4 Bronze Rivets (7) (missing)

61.5 'Remains of wood with a single bronze rivet' (missing)

Grave Sixty-Two

MM: "Head to NW. by N. On right side, left hand to face, right hand to chest. In front of face, necklace of glass beads (various colours), silver pendant, buckle and white object, possibly set originally in silver ring. Two silver wire rings, and a double cut comb of bone, beautifully made. At waist a knife, two large keys, two bronze rings, a perforated bronze article, resembling the top of a scent bottle. A spindle whorl of bone under the hip. This burial was in a grave to the south of the barrow."

VCH: "In grave no. 62 a woman had been buried with glass beads and silver bossed pendant, the annular brooch already mentioned, two silver ear-rings and a double comb; a spindle-whorl under the hip and a knife, keys (or girdle-hangers) with rings at the waist, with a bronze pyramid 0.7 in. at the base..."—p. 90

SOA: "Outside the barrow to the S., in a grave 4 ft. below the surface, a skeleton lying on the right side with head to NW. by N.; the left hand to the face, and the right hand to the chest. In front of the face, some beads; a bossed pendant of silver, an annular brooch 1.1 in. across with pairs of animal-heads, and a white object, possibly a silver ring; two earrings of silver wire at the neck, and a comb with two rows of teeth. At the waist a knife and two girdle-hangers, one with a ring at the top; a small bronze object of pyramidal form 0.7 in. across at the base, and a bone spindle—whorl under the hip."—p/ 153

62.1 Beads

Material: Glass

Dimensions:

Dark Blue D: 0.77 cm; T: 0.45

Blue 1) D: 0.78 cm; T: 0.57 cm

Blue 2) D: 0.79; T: 0.54

Green 1) D: 0.95 cm; T: 0.59

Green 2) D: 0.83 cm; T: 0.54 cm

Green 3) D: 0.81 cm; T: 0.54 cm

Green 4) D: 0.76 cm; T: 0.52 cm

Green 5) D: 0.76 cm; T: 0.49 cm

Green 6) D: 0.81 cm; T: 0.45 cm

Light Green 1) D: 0.81 cm; T: 0.48 cm

Light Green 2) D: 0.75 cm; T: 0.59

Light Green 3) D: 0.83 cm; T: 0.53 cm

Description: The three blue beads are translucent, while the remaining nine green beads are opaque.

Location and Museum Number: Yorkshire Museum Trust, 1947.219



Figure 80 Grave 62 beads. Top left, complete assemblage; top right, green beads from the assemblage. Bottom left, three pale green beads; bottom right, two blue beads (2:1).

62.2 Silver Bulla Pendant

Material: Silver

Dimensions: Whole, D: 1.38 cm; T: 0.46 cm; Suspension Loop, L: 0.21 cm; W: 0.32 cm

Description: A half sphere made of thin sheet, the front rounded with the back flat and a small lip around the circumference, a ribbed suspension loop folded over from the back piece.

Location and Museum Number: Yorkshire Museum Trust, 1947.206.3



Figure 81 Grave 62 bulla pendant.

62.3 Annular Brooch

Material: Copper Alloy

Dimensions: D: 2.72 cm; T: 0.14 cm

Description: Two sets of animal heads on opposite sides from each other. The top with bird heads with a circle between the curved beaks. The opposite side with dog

(?)/dragon (?) heads with the loop of the pin between the open mouths. The pin has been broken off, leaving only the loop. Also a section of the place ring is missing.

Location and Museum Number: Yorkshire Museum Trust, 1947.205.2



Figure 82 Grave 62 annular brooch.

62.4 Bone Comb

Material: Bone

Dimensions: L: 12.12 cm; W: 3.17cm-3.89 cm; T: (with plates) 1.07 cm, (without plates) 0.32 cm.

Description: A double sided comb with plate attached by four rivets. Most of the teeth are missing. One side is very dark, almost black, perhaps secondary burning.

Location and Museum Number: Yorkshire Museum Trust, 1947.207

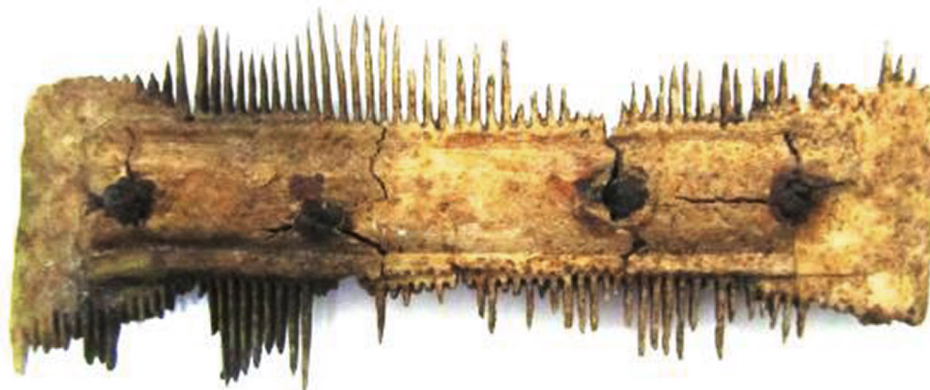


Figure 83 Grave 62 comb.

62.5 Pyramid Mount

Material: Copper Alloy

Dimensions: L: 1.29 cm; W: 1.54 cm; H: 0.69 cm; T: 0.1 cm

Description: A pyramid shaped mount with ring and dot in each corner of the triangular faces, the dots punched through. A cross bar on the underside.

Location and Museum Number: Yorkshire Museum Trust, 1947.205.6



Figure 84 Grave 62 pyramid mount.

62.6 Silver Ring (one of a pair; second ring missing)

Material: Silver

Dimensions: D: 1.9 cm T: 0.1 cm

Description: A wire ring with a loop and small hook for a clasp, the loop side of the ring has a break.

Location and Museum Number: Yorkshire Museum Trust, 1947.206.4



Figure 85 Grave 62 slipknot ring.

62.7 Knife (missing/unassociated)

62.8 Copper Alloy Pennanular Ring

Material: Copper Alloy

Dimensions: L: 1.76 cm; W: 1.55 cm; T: 0.27 cm

Description: An oval shaped ring with a small opening, a small indent on the inside of each end.

Location and Museum Number: Yorkshire Museum Trust, 1947.206.1



Figure 86 Grave 62 ring.

62.9 Ring

Material: Copper Alloy

Dimensions: D: 3.21 cm; T: 0.35 cm

Description: A plain ring, heavily corroded.

Location and Museum Number: Yorkshire Museum Trust, 1947.206.2



Figure 87 Grave 62 ring.

62.10 Bone Spindle-Whorl

Material: Bone

Dimensions: D: 3.45 cm; T: 1.79 cm

Description: An annular spindle whorl with incised concentric circles around the perforation and band of incised lines along the body. The underside has been damaged.

Location and Museum Number: Yorkshire Museum Trust, 1947.224



Figure 88 Grave 62 spindle-whorl.

62.11 'Two Large Keys'/'Two Girdle-Hangers'
(missing/unassociated)

62.12 'A White Object, possibly a sliver ring' (missing)

Grave Sixty-Three

MM: "At 13 ft. NE. by E., from head of 62, the head of a body (63). A piece of iron on hip. Three feet to the NE., the skeleton of a dog; an illustration of Pope's lines on the Indian who thought:

"Admitted to an equal sky

His faithful dog would bear him company"

The body was on the right side, head to NW., 3 ft. 4 in. from crown of head to knees. Left hand on knees, hand turned back; right hand 'doubled' back to head under neck."

SOA: "At 13 ft. NE. of the head of no. 62, the head of another skeleton which lay on the right side, with head to the NW., and measured 3 ft. 4 in. from the crown of the head to the knees; the left hand turned back in front of the knee, and the right doubled back to the head and found under the neck. A piece of iron at the hip, 3 ft. NE. of which, and about 8 in. higher, were found the remains of a wolf or dog."—p. 153

63.1 Piece of Iron (missing/unassociated)

Grave Sixty-Four

SOA: "Midway between nos. 62 and 63, the decayed skeleton of a man, loosely contracted, lying 4 ft. below the surface on the right side with head to NW., the right arm down the side, the left under the hip. Over the tibia two bronzes like those found in no. 60, and at the hip a knife and iron buckle."—p. 153

64.1 Knife (missing/unassociated)

64.2 Iron Buckle (missing/unassociated)

64.3 'Two pieces of bronze, like those found in no. 60' (missing)

Grave Sixty-Five

VCH: "...a gold disc having a star-pattern executed in plaited gold wire applied to the front, and in the centre a boss of some white material surmounted by a garnet (grave no. 65)"— p. 91

SOA: "Below the dog or wolf mentioned under no. 63, and 4 ft. below the surface, a skeleton measuring 34 in. from knee to back of head, with head to NW.; the left arm turned back, with the fingers up to the face, and the right arm across the body. On the left of the head an annular brooch with transverse lines, a comb, a small piece of gold cell-work set with garnets."—p. 153

65.1 Annular Brooch

Material: Copper Alloy

Dimensions: D: 2.45 cm; T: 0.24; (Pin) L: 2.63 cm; T: 0.13 cm

Description: An annular brooch in two pieces and the accompanying pin. The ring is decorated with six sets of three lined bands that are equally spaced around the circumference. The pin is straight with a flattened and bents loop.

Location and Museum Number: Yorkshire Museum Trust, 1947.208.1



Figure 89 Grave 65 annular brooch.

65.2 Small Fragment of Cloisonné

Material: Gold, Garnet

Dimensions: Whole, L: 1 cm; W: 0.42 cm-0.72 cm; T: 0.22 cm

Description: Five cloisonné cells in the shape of a bird head. A cell is missing, leaving a view to the underside and a punched hole. Patterned gold foil is visible under the remaining four garnets, primarily cross-hatching. The reverse side has two punched holes, one of which is covered by patterned gold foil. The second hole appears to have been torn at some point in time and the overall surface of the reverse side is uneven.

Location and Museum Number: Yorkshire Museum Trust, 1947.208.2



Figure 90 Grave 65 unidentified cloisonné object, front and back. (approx. 2:1)

65.3 Comb

Material: Bone/Horn

Dimensions: Fragments range in width: less than 1 cm to 1.4 cm; fragments range in thickness: 0.1 cm to 0.49 cm

Description: Seventeen fragments of the connecting plate of a double-sided comb, calcined.

Location and Museum Number: British Museum, OA.4938



Figure 91 Grave 65 comb fragments.



Figure 92 Grave 65 details of comb fragments. (Approx. 1.5:1)

65.4 Gold Disc Pendant (?) (unassociated)

Grave Sixty-Six

MM: "3 ft. north of 65 a body (66), 3 ft. below surface, on right side, head to NW.; left hand out from body, right bent back to the waist. A woman. Behind neck a silver ring with loop, and three glass beads. At waist a knife and iron buckle. At knee iron chain connecting to enigmatical bronze ornaments, a bead, a round stone (polished), and a piece of rubbed jet."

SOA: "At 3 ft. N. of no. 65, and 1 ft. above its level, a woman's skeleton lying on the right side with head to NW., 3 ft. below the surface; the left hand out from the body, and the right bent back to the waist. Behind the neck a silver ring with loop and three beads; at the waist a knife and iron buckle, and in front of the knee (probably in a purse) an iron chain, some bronze, a bead, a round polished stone, and a piece of jet."—p. 153-154

66.1 Silver Ring (missing)

66.2 Beads (unassociated)

66.3 Iron Buckle (missing/unassociated)

66.4 Knife (missing/unassociated)

66.5 Iron Chain

Material: Iron

Dimensions: L: 8.11 cm; T: 0.52 cm

Description: A length of chain that is heavily corroded and has faint impressions of woven textile on a small section near the end.

Location and Museum Number: Yorkshire Museum Trust, 1947.384



Figure 93 Grave 66 chain.

66.6 Hooked Tag

Material: Copper Alloy

Dimensions: L: 1.68 cm; W: 1.35 cm; T: 0.08 cm

Description: A thin sheet of copper alloy in a triangular shape, two holes punched along the base, the vertex angle sharpened and folded over.

Location and Museum Number: Yorkshire Museum Trust, 1947.385



Figure 94 Grave 66 hooked tag no. 1

66.7 Hooked Tag

Material: Copper Alloy

Dimensions: L: 1.53 cm; W: 1.4 cm; T: 0.05 cm

Description: A thin sheet of copper alloy in a triangular shape, two holes punched along the base, the vertex angle sharpened and folded over.

Location and Museum Number: Yorkshire Museum Trust, 1947.386



Figure 95 Grave 66 hooked tag no. 2.

66.8 Bead (missing/unassociated)

66.9 Round Polished Stone

Material: Granite?

Dimensions: L/D: 2.12 cm; T: 1.29 cm

Description: An ovoid stone with white, dark brown, and light brown inclusions; polished.

Location and Museum Number: Yorkshire Museum Trust, 1947.387



Figure 96 Grave 66 polished stone.

66.10 Piece of Jet (missing)

Grave Sixty-Seven

SOA: "At 3 ft. NE. of no. 66, and 1 ft. lower, a man's skeleton lying on the right side, with hands to the hips; an iron knife, buckle, and steel for sharpening at the hip."—p. 154

67.1 Knife (missing/unassociated)

67.2 Spatula Tool (missing/unassociated)

67.3 Iron Buckle (missing/unassociated)

Grave Sixty-Eight

MM: "3 ft. NE. of 66 and 1 ft. lower. Body on right side, head to NW. Lying across the thighs are an iron sword 12 ½ in. blade, 5 ½ in. tang and 1 ¼ in. wide, single edged and sharp pointed, the handle towards the head. A buckle close to the handle. A young man, with head on back, face upwards, but lower part of body on right side. At the waist, an iron knife."

SOA: "At 3 ft. of no. 67, the skeleton of a young man with head to NW., and facing upwards, but the lower part of the body lying on the right side. At the waist a knife, and across the thigh and leg a scramasax (sword-knife) 12 ½ in. long and 1 ¼ in. broad, with tang 5 ½ in. long; the handle towards the skull and a buckle close to the handle."—p/ 154

68.1 Seax

Material: Iron

Dimensions: Whole, L: 35.6 cm; Blade, L: 26.4 cm; W: 2.7 cm; Tang, L: 8.8 cm

Description: A single-edged blade with slight angled-back; a long tapered tang attached. The front end of the blade is rounded, and noticeably uneven on both edges, possible indication of a sheath.

Location and Museum Number: Yorkshire Museum Trust, 1947.331



Figure 97 Grave 68 seax, front and back.

68.2 Knife (missing/unassociated)

68.3 Buckle (missing/unassociated)

Grave I

SOA: "At 31 ft. NW. of the centre, a contracted skeleton of a young person, about 18 years old, on the original surface, lying NW. and SE. on the left side with the head to NW. At the right of the waist two knives with handles upwards, an iron buckle of the waist-belt, and another small one of bronze."—p. 148

I.1 Knife (missing/unassociated)

I.2 Knife (missing/unassociated)

I.3 Bronze Buckle (missing/unassociated)

I.4 Iron Buckle (missing/unassociated)

Catalogue Part 2: Unassociated Objects

Unc1 Bead

Material: Glass

Dimensions: L. 1.71 cm; T. 0.53 cm

Description: A bright blue, long rectangular bead with a round hole running through the length of the body.

Location and Museum Number: Yorkshire Museum Trust, 1947.200.1



Figure 98 Unc1 bead.

Note: A photograph found in the YMTH from the first half of the 20th century suggests that bead was found in grave 1 (appendix 2, fig. 116).

Unc2 Bead

Material: Glass

Dimensions: D: 0.85 cm; T: 0.65 cm

Description: Opaque green with traces of brown throughout.

Location and Museum Number: Yorkshire Museum Trust, 1947.200.2



Figure 99 Unc2 bead.

Unc3 Decorated Bead

Material: Glass

Dimensions: D: 1.7 cm; T: 1.26 cm

Description: A deep brown globular bead with lighter brown circumferential wide crossing waves. In the centre of the wave spaces are yellow blobs that are surrounded by a red circle and intersected with green on the outside.

Location and Museum Number: Yorkshire Museum Trust, 1947.212.1



Figure 100 Unc3 polychrome bead.

Unc4 Bead

Material: Glass

Dimension: D: 1.3 cm; T: 1.0 cm

Description: A blue globular bead with some surface pitting

Museum and Location Number: Yorkshire Museum Trust, 1947.212.2

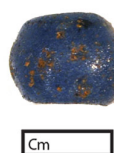


Figure 101 Unc4 bead.

Note: Because the museum ascension numbers appear to correspond with grave assemblages, this bead might have come from grave 45.

Unc5 Beads

Material: Glass

Dimensions:

D: 0.85 cm; T: 0.6 cm

2) D: 0.78 cm; T: 0.51 cm

Description: The first, green with traces of brown swirl, the second a brighter green.

Location and Museum Number: Yorkshire Museum Trust, 1947.217.6



Figure 102 Unc5 beads (2).

Unc6 Bead

Material: Glass

Dimensions: D: 1.39 cm; T: 0.83 m

Description: Opaque black with white trailing.

Location and Museum Number: Yorkshire Museum Trust, 1947.389



Figure 103 Unc6 polychrome bead.

Unc7 Bead

Material: Bone

Dimensions: D: 1.64 cm; T: 0.93 cm

Description: A carved barrel-shaped or globular bead, made of bone.

Location and Museum Number: Yorkshire Museum Trust, 1947.212.3



Figure 104 Unc7 bone bead.

Note: Again, because the museum accession numbers appear to correspond with grave assemblages, this bead might have come from grave 45.

Unc8 Copper Alloy 'Clip'

Material: Copper Alloy

Dimensions: Whole, L: 1.86 cm; W: 0.73 cm; Rivet, L: 1 cm

Description: A thin sheet of copper alloy that has been bent in the middle, with a rivet connecting the ends; both ends rounded.

Location and Museum Number: Yorkshire Museum Trust, 1947.376



Figure 105 Unc8 'clip'.

Unc9 Copper Alloy Penannular Ring

Material: Copper Alloy

Dimensions: D: 4.89 cm; T: 0.46 cm

Description: A pennannular ring with flattened square terminals.

Location and Museum Number: Yorkshire Museum Trust, 1947.391



Figure 106 Unc9 penannular ring.

Unc10 Iron Buckle

Material: Iron

Dimensions: Buckle, L: 4.46 cm; W: 2.51; T: 0.48; Tongue, L: 3.05 cm; W: 0.47; T: 0.19

Description: A d-shaped buckle with a section missing along the bottom bar. The tongue separate; with a loop for attachment and a slight curve at the tip.

Location and Museum Number: Yorkshire Museum Trust, 1947.335



Figure 107 Unc10 buckle.

Unc11 Iron Buckle

Material: Iron

Dimensions: L: 3.19 cm; W: 1.9 cm; T: 0.61 cm

Description: A d-shaped buckle with the pin attached, heavily corroded.

Location and Museum Number: Yorkshire Museum Trust, 1947.338



Figure 108 Unc11 buckle.

Unc12 Iron Buckle Plate

Material: Iron

Dimensions: L: 2.63 cm; W: 2.07 cm; T: 0.27 cm-0.78 cm

Description: A double, possibly folded, plate, with rounded corners and end, heavily corroded.

Location and Museum Number: Yorkshire Museum Trust, 1947.339



Figure 109 Unc12 buckle, front and back.

Unc13 Iron Buckle

Material: Iron

Dimensions: L: 3.67 cm; W: 2.28 cm; T: 0.72 cm

Description: A d-shaped buckle with the tongue attached, heavily corroded.

Location and Museum Number: Yorkshire Museum Trust, 1947.340



Figure 110 Unc13 buckle

Unc14 Iron Buckle

Material: Iron

Dimension: Whole, L: 2.6 cm; W: 1.8 cm; T: 1.0 cm

Description: A small D-shaped buckle with a rectangular plate; the front lower right corner broken off. Reverse side shows several small impressions of rice-like shapes, likely related to insect larvae.

Location and Museum Number: Yorkshire Museum Trust, YORYM 1947.373



Figure 111 Unc14 iron buckle; front and back.

Unc15 Knife

Material: Iron

Dimensions: Blade, L: 9.82 cm; W: 1.19 cm; T: 0.52 cm; Tang, L: 3.58 cm; W: 0.81 cm; T: 0.58 cm

Description: A single edged angle back blade with a strait cutting edge. The tapered tang no longer attached, but with traces of the wood or horn handle attached. Modern repairs made to the blade, all is heavily corroded.

Location and Museum Number: Yorkshire Museum Trust, YORYM 1947.345



Figure 112 Unc15 knife.

Unc16 Blade

Material: Iron

Dimensions: A) L: 5.21 cm; W: 1.51 cm; T: 0.47; B) L: 2.7 cm; W: 1.46 cm; T: 0.32 cm

Description: A rectangular blade with no apparent cutting edge, with a rounded end. The blade is broken in two pieces with the tang missing, heavily corroded. Probably from a spatula tool

Location and Museum Number: Yorkshire Museum Trust, YORYM 1947.348



Figure 113 Unc16 blade(s).

Unc17 Knife

Material: Iron

Dimensions: Whole, L: 8.93 cm; Blade L: 6.22 cm; W: 1.51 cm; W: 0.41 cm; Tang, L: 3.62 cm; W: 0.61 cm; T: 0.31 cm

Description: A curved back with a concave cutting edge and a prominent choil; a tapered tang attached. The tip of the blade and tang are missing, the object heavily corroded with modern restoration.

Location and Museum Number: Yorkshire Museum Trust, YORYM 1947.356



Figure 114 Unc17 knife.

Unc18 Blade Fragment

Material: Iron

Dimensions: L: 5.11 cm; W: 2.64 cm; T: 0.76 cm

Description: A rectangular fragment with one end narrowing slightly and with blunt side edges; probably the blade of a spatula tool. The object is heavily corroded.

Location and Museum Number: Yorkshire Museum Trust, YORYM 1947.365



Figure 115 Unc18 blade fragment.

Unc19 Unidentified Iron Object

Material: Iron

Dimensions: L: 7.19 cm; W: 1.48 cm; T: 2.78 cm

Description: Four bands of iron that have been fused together by the oxidation process. The tops of the bands appear to be broken from the original object; one the pieces of iron terminated in a hook-like curve.

Location and Museum Number: Yorkshire Museum Trust, YORYM 1947.366



Figure 116 Unc19 unidentified iron object.

Unc20 Two Iron Blades

Material: Iron

Dimensions: A) L: 8.26 cm; W: 1.88 cm; T: 0.62 cm; B) L: 9.68 cm; W: 1.63 cm; T: 0.63 cm

Description: Blade A is a part of an angled-back blade with a straight cutting edge. Blade B is part of a spatula tool with a rounded square end and without cutting edges. Both blades are broken above the tang and are heavily corroded.

Location and Museum Number: Yorkshire Museum Trust, YORYM 1947.367



Figure 117 Unc20 two blades.

Unc21 Unidentified Iron Object

Material: Iron

Dimensions: L: 6.06 cm; T: 0.54

Description: A bulbous length of iron tapering to an indented knop on the other, perhaps a broken ring for suspension. The object is heavily corroded.

Location and Museum Number: Yorkshire Museum Trust, YORYM 1947.375



Figure 118 Unc21 unidentified iron object.

Unc22 Whetstone

Material: Greywacke

Dimensions: L: 47 cm; W: 4.93 cm-4.96 cm; T: 5.24 cm-5.29 cm

Description: A long, rectangular grey stone with rounded ends. Most of the surface is smooth with a few uneven areas near the edges. Side D has incised lines near one end. Darker patches on the surface may indicate secondary burning, similarly seen on the other whetstone (G11.2).

Location and Museum Number: Yorkshire Museum Trust, YORYM.1947.344



Face A



Face B



Face C



Face D



Detail of inscription on Face D

Figure 119 Unc22 Whetstone.

Unc23 Iron Fragment

Material: Iron

Dimensions: L: 5.36 cm; W: 4.7 cm; T: 0.34 cm-0.99 cm

Description: A flat fragment of iron with one straight edge, the other edges abnormally shaped. The front side is slightly raised, probably due to corrosion, and has possible traces of organic material. The reverse side is flat and also corroded.

Location and Museum Number: Yorkshire Museum Trust, YORYM 2007.6098

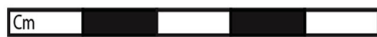


Figure 120 Unc23 iron fragment.

Note: This piece of iron likely comes from the blade of sword 5.1.

Unc24 Unidentified Iron Object

Material: Iron

Dimensions: L: 3.69 cm; W: 0.97 cm; T: 0.63 cm

Description: An elongated triangular fragment with a small, hollow centre.

Location and Museum Number: Yorkshire Museum Trust, 2014.136

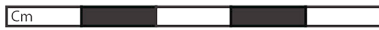


Figure 121 Unc24 unidentified iron object.

Unc25 Unidentified Object

Material: Wood, Iron

Dimensions: L: 6.2 cm; W: 0.6 cm; T: 0.5 cm

Description: An oblong wooden shaft with a round protuberance at one end, perhaps pierced by the wood.

Location and Museum Number: Yorkshire Museum Trust 2014.135



Figure 122 Unc25 wood and iron (?) object.

Note: The back of the object has a red 56 painted on it, which would normally suggest that the object was part of the grave 56 assemblage. However, g56 is described as part of a skull, with a knife and spatula tool and 'a piece of iron'. Perhaps the material was misidentified at the time of excavation, but the wood grain of the shaft is visibly obvious. Therefore, this object has been considered unassociated.

Furthermore, this may be an uncommon example of a spindle with a small whorl still attached, and preserved thread wound around the shaft.

Unc26 Gold Disc Pendant

Material: Gold

Dimensions: D: 2.63 cm; T: 0.1 cm; Suspension Loop, H: 0.36 cm; W: 0.43 cm; T: 0.1 cm

Description: A flat disc with filigree chevrons terminating in scrolls surrounding a central fitting, which is now missing. The outer edge of the pendant is decorated with fine granules. A ribbed suspension loop is attached to the top.

Location and Museum Number: Yorkshire Museum Trust, YORYM 1947.209.5



Figure 123 Unc27 gold disc pendant with scrollwork.

Note: In Smith's account of the disc pendants, he noted that they were found in grave 31 and 65, but was unable to determine which pendant was associated with which grave, hence their inclusion in the unassociated finds.

Unc27 Gold Disc Pendant

Material: Gold

Dimensions: D: 2.14 cm; T: 0.16 cm; Suspension Loop, W: 0.34 cm

Description: A flat disc with braided filigree along the outer edge and the mount for a cabochon mount (not lost). Four lines radiate from the central boss at equal spacing, creating a cruciform. The space between the arms are decorated with triangles that begin at the centre setting and come to a point at the outer edge. A suspension loop has been added.

Location and Museum Number: Yorkshire Museum Trust, YORYM 1947.209.6



Figure 124 Unc28 gold disc pendant with cruciform design.

Unc28 Iron Fragments

Material: Iron

Dimensions: A) L: 4.68 cm; W: 0.93 cm; T: 0.29 cm-0.37 cm; B) L: 3.43 cm; W: 0.94 cm; T: 0.92 cm.

Description: A pair of slightly curved iron fragments.

Location and Museum Number: British Museum OA.4941



Figure 125 Unc28 Two iron bands.

Unc29 Copper Alloy Fragments

Material: Copper Alloy

Dimensions: A) L: 2.54 cm; W: 0.79 cm; T: 0.43 cm; B) D: 0.71 cm; T: 0.31 cm; C) L: 1.03 cm; T: 0.23 cm; D) L: 0.59 cm; T: 0.28 cm

Description: Four small fragments of heavily corroded copper alloy, perhaps the remains of a chain for a workbox.

Location and Museum Number: British Museum, OA.4942



Figure 126 Unc29 Copper alloy fragments.

Catalogue Part 3: Contemporary descriptions of graves without objects

Grave Two

MM: "Just S. of No. 1 was a burnt body (No. 2), with bone needle, having a large eye. Near it were one piece of a 'drinking cup', a stone axe, and some flints, one a 'thumb-flint.' Burnt soil all round the burial. About three ft. behind pelvis, among burnt soil, two burnt stones (large) and at the foot a bronze box and bronze chain. The box was 2 ¼ in. in height by 2 1/3 in. in diameter, ornamented on sides with vertical lines, semi-circular markings, the top and bottom having circular rings or raised dots made from inside."

VCH: Smith considers the second grave (no. 2) in this reference to be what is considered no. 3 in this catalogue, with no mention of the Bronze Age objects.

SOA: "Just N. of preceding, a skeleton lying on left side, in more decayed condition, but part of a young person: head and shoulders missing, probably disturbed by burial no. 1. The head had been to W., but body in contracted position."—p.149

Grave Four

SOA: "At 31 ft. SW of centre, skeleton of young person too decayed for direction to be determined."—p. 149

Grave Fourteen

SOA: "At 34 ft. ESE. of the centre (measured to crown of head), a skeleton at full length in a shallow grave, the head to NNW. From crown of head to heel measure 5 ft. 6 in."—p. 150

Grave Seventeen

SOA: "At 26 ft. SE. by E. of the centre, a skeleton slightly contracted, measure 3 ft. 9 in. from the crown of the head to the knees; on the left side, the head to north; the right arm a little bent to bring hand on the hip, and the left arm strait down the side."—p. 150

Grave Eighteen A and B

MM: "35 ft. to the east (with slight touch of south) a grave E and W, 6 ft. 10 in. by 1 ft. 3 in. by 9 in. deep, ascending to the West. Body (18), head to West, right hand under body, left over it. On the mans knees, lying at full length, was the skeleton of a very young child."

SOA: "At 35 ft. from the centre slightly S. of E., skeleton of a man lying E. and W. in a grave 6 ft. 10 in. by 1 ft. 3 in., and 9 in. deep: the head rising to W., right hand under the body and the left over it. On the knees, laid at full length, the skeleton of a young child."—p. 150

Grave Eighteen C

MM: "2 ft. to the north another very shallow grave, especially towards the head, 3 ft. 4 in. by 1 ft. 6 in., and in it a body at full length, head to west. All the upper part of the body was gone. Graves parallel."

SOA: "Skeleton at full length in a very shallow grave especially at head, 5 ft. 4 in. by 1 ft. 6 in. , 2 ft. N. of preceding burial. The head lay to W., but all the upper part of the body removed, possibly by digging at some period."—p. 150

Grave Nineteen

SOA: "At 28 ft. SE. of the centre, and 3 ft. E. of no. 15, a skeleton 1 ft. above the original surface."—p. 150

Grave Twenty

SOA: "At 25 ft. SW. of the centre, the lower part of a skeleton 1 ft. above original surface, lying on right side: the head had been to the N."—p. 150

Grave Twenty-One

SOA: "At 3 ft. E of no. 20, a skeleton laid at full length with head to W., 1 ft. above original surface."—p. 150

Grave Twenty-Seven

SOA: "At 22 ½ ft. SE. by S. of the centre (measured to the head), a skeleton lying ESE and WNW., with head to WNW., with hands on the hip and the feet resting on the skull, leg and pelvic bones of a very old woman. The latter body was much decayed and no teeth remained: it had been disturbed in digging the later grave, and was laid in a heap."—p. 151

Grave Twenty-Eight A and B

SOA: "At 18 ½ ft. S. of the centre, a skeleton slightly contracted, lying on right side, with a stone behind the head: behind the hip, the femur, tibia, pelvis and skull of another body laid in a heap and disturbed with the later grave was dug."—p. 151

Grave Thirty

MM: "At 17 ft. SSW from centre and 15 ft. NNW from 29, a body (30) on right side, head to WNW."

SOA: "At 17 ft. SSW. of the centre and 15 ft. WNW. of no. 29, a contracted skeleton lying on right side with head to WNW."—p. 151

Grave Thirty-Four

SOA: "At 28 ft. SE. of the centre, a skeleton much decayed."—p. 151

Grave Thirty-Six

SOA: "At 27 ½ ft. W. of the centre, slightly S., a contracted skeleton of a person about 15 years old, lying on the right side with head to the W.: the head and shoulders had been disturbed, and the collar-bones and some ribs placed in the skull."—p. 151

Grave Forty

SOA: "At 35 ft. E. of the centre, a skeleton with head to W., but too decayed for position of body to be determined."—p. 152

Grave Fifty-One

SOA: "At 21 ft. 10 in. NW. of the centre, part of a skull pointing W., close to the surface and much decayed: about 1 ft. W., a large quantity of burnt earth:"—p. 152

Grave Fifty-Five

SOA: "A skeleton, disturbed probably for the interment of no. 54, looking upwards and adjoining the heel of that skeleton; but several bones displaced, the knee-cap and part of pelvis being placed on the head."—p. 153

Grave II

SOA: "At 27 ft. NW. of the centre, a skeleton at full length 1 ft. above the original surface, lying NW. and SE. with the head to NW.; the right arm extended and the left out from the body."—p. 148

Grave III

SOA: "At 25 ft. WNW. Of the centre, on the same level as the preceding, the skeleton of a very young person, so decayed that its position could not be determined."—p. 148

Appendix 2: Archived Photographs of the Uncleby collection in the Yorkshire Museum

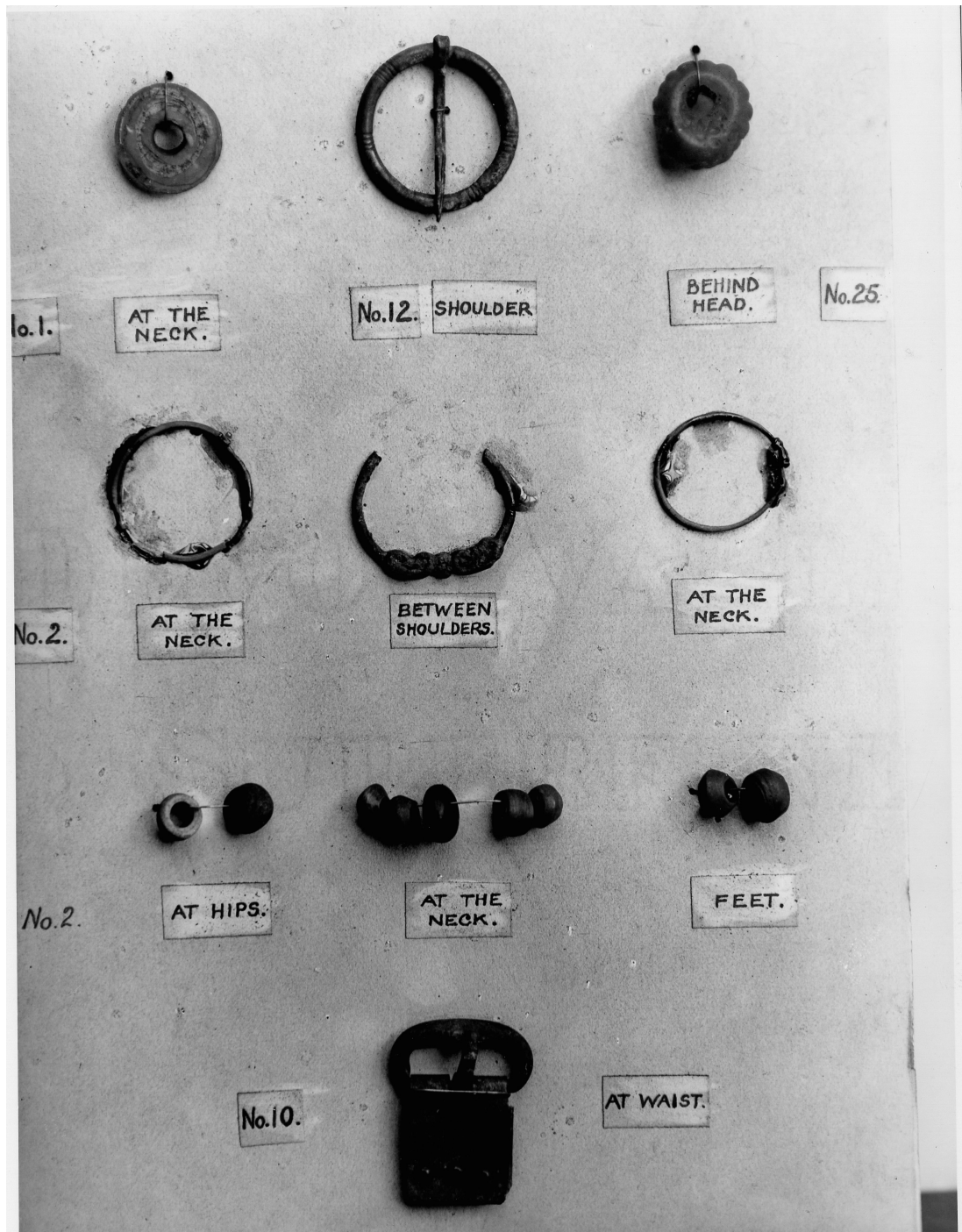


Figure 127 Archive photograph of Uncleby collection display by grave (YMTH). First row: grave 1 (missing) bead, grave 12 annular brooch, grave 25 (missing) bead. Second row: all objects attributed to grave 2: slipknot ring, annular brooch, slipknot ring. Third row: all objects attributed to grave 2: three assemblages of beads. Fourth row: grave 12 buckle.

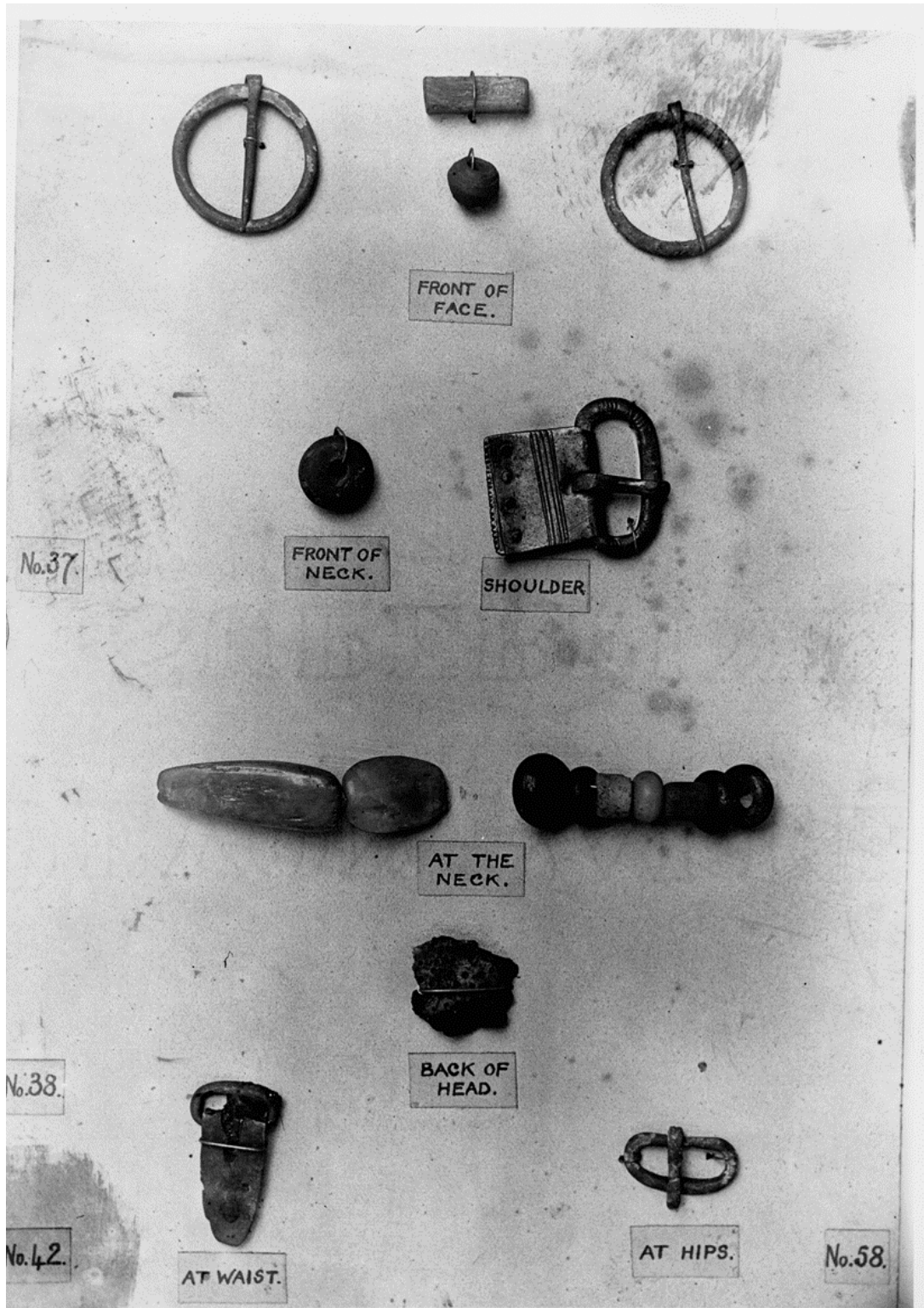


Figure 128 Archive photograph of Uncley collection display by grave (YMTH). First row: grave 35(?) annular brooch, two beads, and annular brooch. Second row: attributed to grave 37, polychrome bead, and buckle. Third row: all attributed to grave 38, amethyst beads, collection of beads, copper alloy and word fragment. Fourth row: grave 42, buckle and grave 58 buckle.

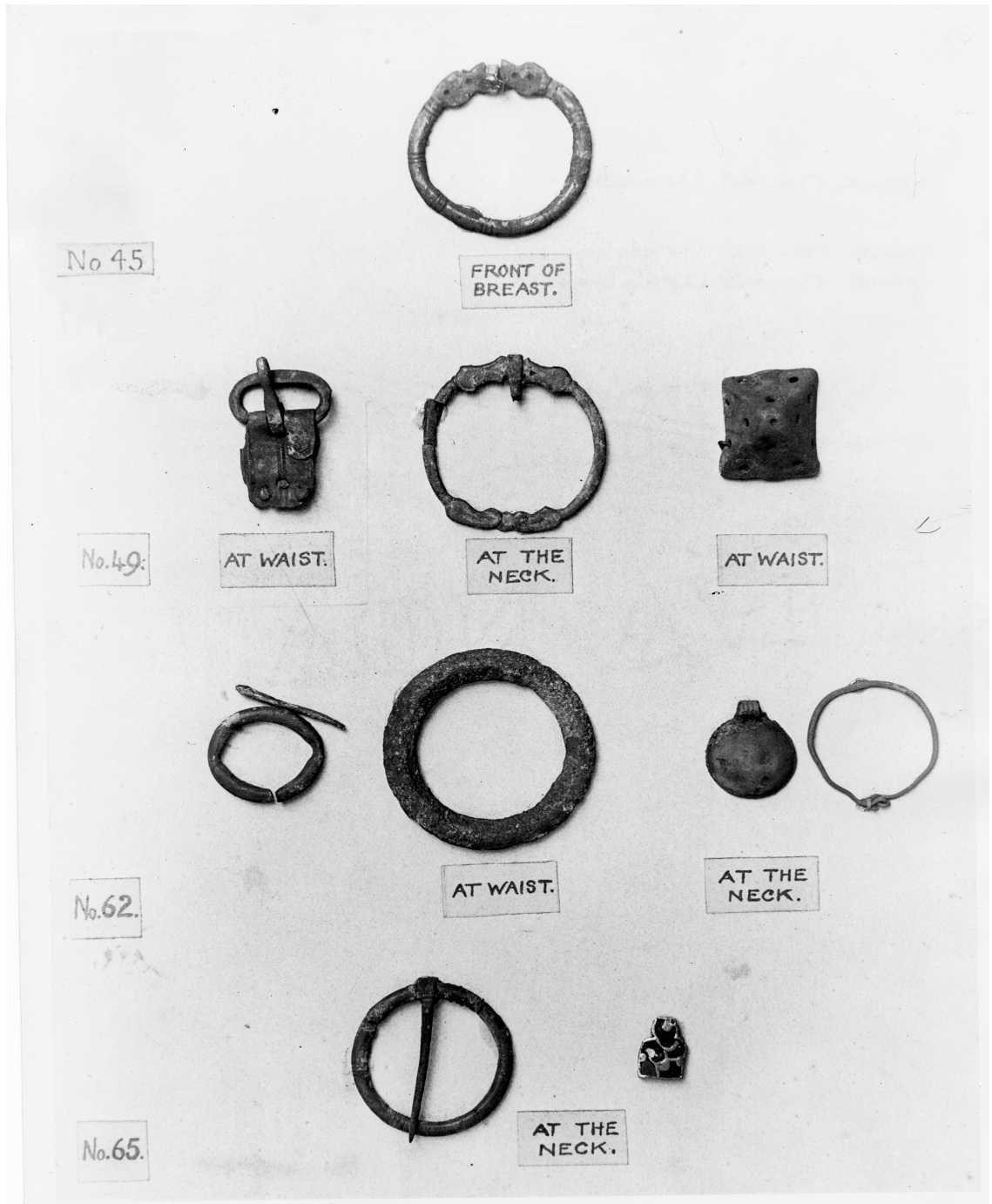


Figure 129 Archive photograph of Uncleby collection display by grave (YMTH). First row: attributed to grave 45, annular brooch. Second row: attributed to grave 49, a buckle, annular brooch and pyramid mount. Third row: attributed to grave 62, two rings, bulla pendant and slipknot ring. Fourth row: attributed to grave 65, an annular brooch and piece of cloisonné.

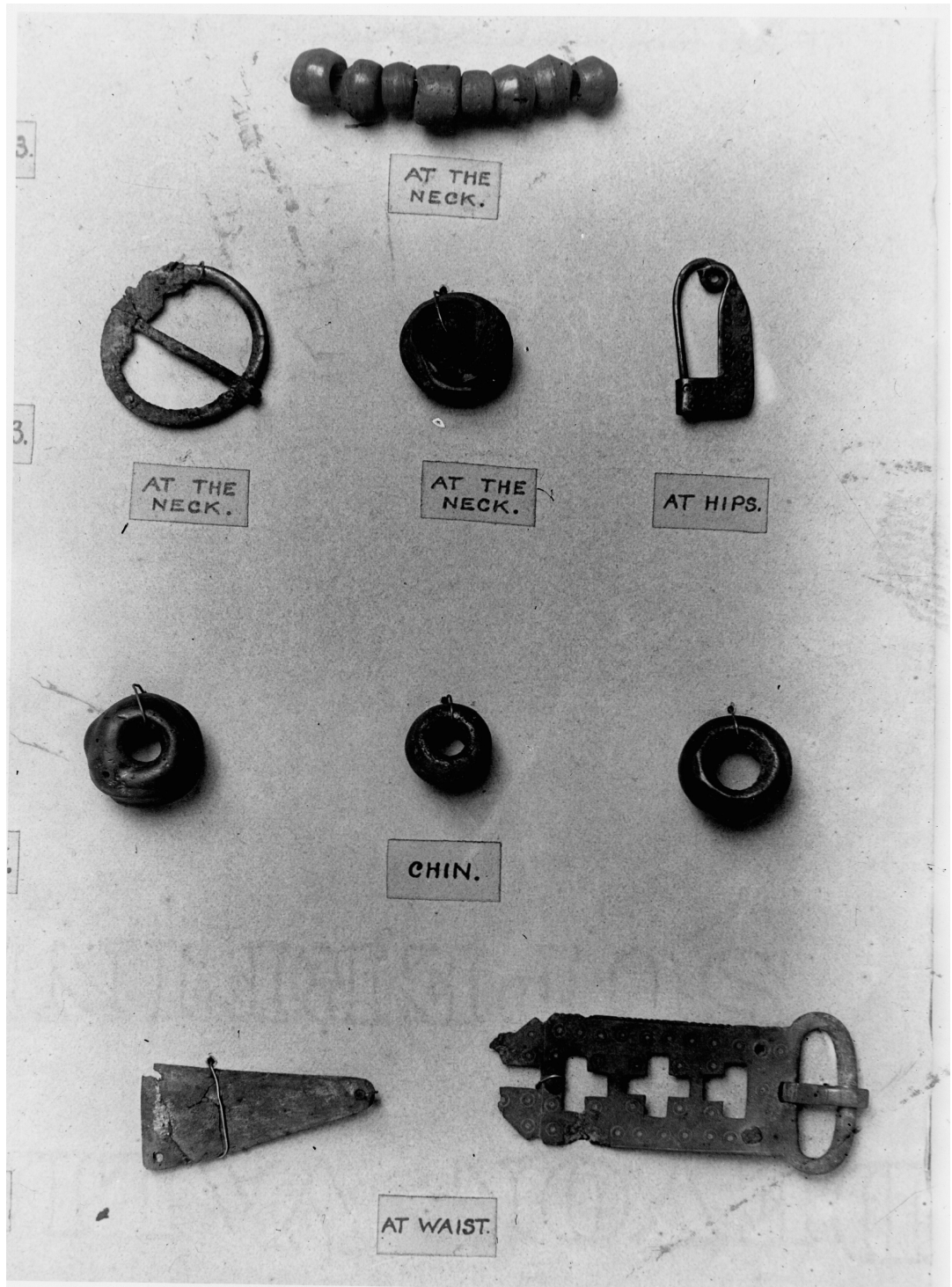


Figure 130 Archive photograph of Uncleby collection display by grave (YMTH). First row: beads. Second row: annular brooch, polychrome bead, and 'safety pin'. Third row: polychrome bead, a bead, and bone bead. Fourth row: backplate and openwork buckle. Written grave associations out of frame.



Figure 131 Copper alloy bowl from grave 31 before restoration (YMTH).

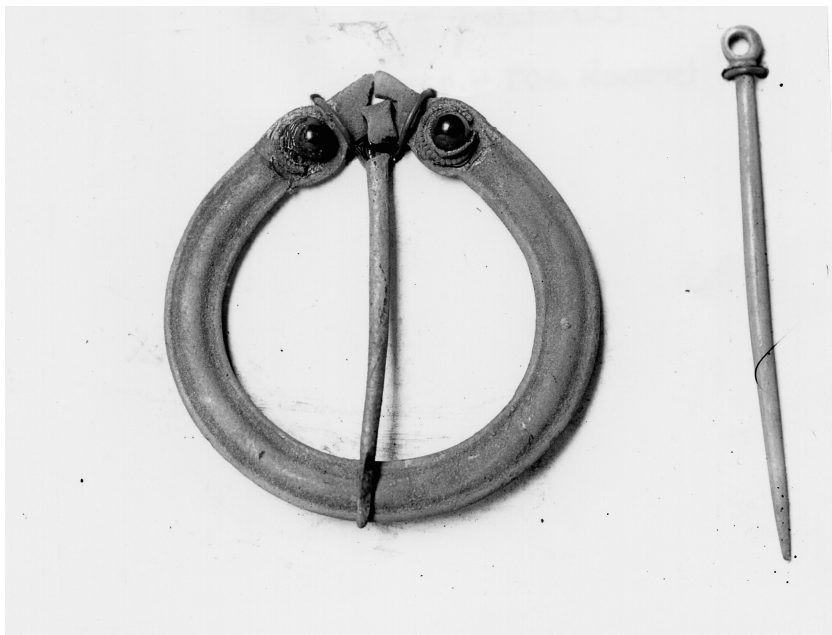


Figure 132 Silver annular brooch (complete) and pin/needle from grave 31.



Figure 133 Archive photograph of Uncley weapons (YMTH). From left: 68.1, 61.3, 5.1, 11.1 and 9.2

Appendix 3: William Greenwell timeline and society memberships

Timeline

- 1820—Born March 23, Greenwell Ford, Lanchester.
- 1836—Entered University College, Durham
- 1839—Earned BA from University College, Durham
- 1840—Enrolled at the Middle Temple, London to study the BAR.
- 1841—Returned to Durham due to ill health
- Enrolled in University College theological course
- 1842—Took the license
- 1843—Earned MA degree
- 1844—Ordained deacon by Bishop Maltby
- Bursar of University College (until 1847)
 - Ordained to the Pemberton Fellowship (until 1854)
- 1846—Ordained Priest
- Chaplain of University College (to 1847)
 - Became founding member of Tyneside Naturalists' Field Club
 - Toured Southern Germany and Northern Italy
- 1847—Perpetual Curate of Ovingham (through to 1850)
- Participated in first archaeological excavation at Chollerston, Northumberland
- 1850—Lived with Archdeacon Wilberforce
- 1852—Appointed Principle of Neville Hall, Newcastle-Upon-Tyne
- Became involved with the Surtees Society
 - Edited the 'Bolden Book' for the Surtees Society
- 31 August read paper at the Newcastle meeting of the Archaeological Institute on concentric circle stone carvings (now lost)
- Member of the Newcastle Society of Antiquaries
 - Member of the Literary and Philosophical Societies
- 1853—Edited 'The Pontifical of Eghert, Archbishop of York (731-767) for the Surtees Society

- 1854—Appointed Minor Canon of Durham
- Appointed Chaplain and Censor of Bishop Cosin's Hall (until 1864)
 - Invented 'Greenwell's Glory', the celebrated Fly
- 1856—Started collecting Greek coins
- Edited 'The Survey of the Palatinate of Durham, Compiled during the Episcopate of Thomas Hatfield (1345-82) for the Surtees Society
- 1858—Was shown bronze dagger from Ford West Field, Northumberland
- June and July, excavated Ford West Field
- 1860—Edited 'Durham Wills and Inventories' for Surtees Society
- 1861—Joined the Berwickshire Naturalists' Field Club
- 1862—Became member of the Council of the Durham Archaeological Society
- 10 April, elected President of the Tyneside Naturalists' Field Club
 - Appointed Librarian to the Dean and Chapter, Durham Cathedral
 - Mark of intensive archaeology phase
- 1865—Elected President of the Archaeological and Architectural Society of Durham and Northumberland (office held until his death in 1918)
- Edited 'Wills and Inventories from the Registry of Dirham' for the Surtees Society
 - Became rector of St Mary-le-bow-the-less, Durham (until death in 1918)
- 1867—Excavated with Pitt Rivers
- 1868—Elected Fellow to the Society of Antiquaries, London
- Excavates Uncleby site
- 1869—Excavated Grimes Grave
- 1870—Took oaths as Magistrate for the county of Durham
- 1871—Founding member of the Durham School Board
- Edited 'Feodarium Prioratus Dunelmensis, a survey of the estates of the Convent of Durham and Northumberland in the Fifteenth Century' for the Surtees Society.
- 1873—Donated Uncleby collection to Yorkshire Philosophical Society
- 1875—Started catalogue of the Seals (completed 1880)
- 1877—British Barrows published
- 1878—6 June, elected Fellow of the Royal Society
- 1879—Made an honorary Fellow of the Society of Antiquaries, Scotland
- Donated large collection to the British Museum

1880—Became Justice of the Peace for Durham (Lanchester?)

1882—Received honorary degree of D.C.L. from the University of Durham

1890—Elected Vice President of the Society of Antiquarians of Newcastle (office held until his death in 1918).

---Elected Vice President of the Surtees Society (office held until his death in 1918)

1895—Broke thigh bone

 --Sold collection of stone implements to Dr Sturge of Nice for £1,200

1897—Durham Archaeological Society commissioned portrait of Greenwell

1899—Published 'A Catalogue of the Sculptured and Inscribed Stones in the Cathedral Library of Durham'

 ---Re-opened St. Cuthbert's tomb

1900—Appointed chairman of the Petty Sessional Division of Durham Ward

1901—Sold collection of Greek coins to Mr. Warren of Sussex, for £11,000

1904—Elected Alderman of the Standing Joint Committee of the County Council (Durham)

1907—Donated collection of Bronze Age implements to the British Museum

1908—Resigned minor canonry

1910—J.P. Morgan purchased large collection of Bronze Age implements from Greenwell via the British Museum for £10,000

 ---J.P. Morgan donates collection to the British Museum

1918—Died, 27 January

Associated Societies

Honorary Member of:

Cumberland and Westmoreland Archaeological Society

Derbyshire Archaeological Society

Suffolk Archaeological Society

Active member of:

Architectural and Archaeological Society of Durham

Yorkshire Philosophical Society

Yorkshire Archaeological Society

Ethnological Society of London

Surtees Society

Participated in:

Durham Numismatic Society

Appendix 4: Domestic Sites Consulted

Table 1 List of domestic sites with coordinates and associated features

SITE	NGR	EASTINGS	NORTHINGS	TYPE
BOYNTON	TA122676	512200	467600	Settlement
BURDALE	SE875623	487500	462300	Settlement
BUTTERWICK	SE988710	498800	471000	Settlement associated earthwork
COTTAM A		498400	465600	Settlement
COTTAM B		497500	466700	Settlement
COWLAM	SE983667	498300	466700	Settlement associated earthwork
EAST LUTTON	SE939694	493900	469400	Settlement associated earthwork
GARTON	SE957616	495700	461600	Settlement associated earthwork
GARTON-ELMSWELL	TA001576	500100	457600	Settlement
HUGGATE	SE880559	488000	455900	Settlement associated earthwork
KEMP HOUSE	SE962662	496200	466200	Structure
KILHAM	TA07786593	507780	465930	Settlement
LOW CAYTHORPE	TA126677	512600	467700	Settlement associated earthwork
NAFFERTON	TA054595	505400	459500	Settlement
RUDSTON	TA097680	509700	468000	Settlement associated earthwork
RUDSTON	TA116671	511600	467100	Settlement?
THWING	TA042709	504200	470900	Settlement associated earthwork
THWING-PADDOCK HILL	TA030707	503000	470700	Settlement?
WEST LUTTON	SE933693	493300	469300	Settlement associated earthwork
WETWANG	SE945602	494500	460200	Structure
WHARRAM PERCY	SE85836436	485830	464360	Settlement
WETWANG	SE945602	494500	460200	Structure

Table 2 List of funerary sites with coordinates and associated features.

SITE	NGR	EASTINGS	NORTHINGS	TYPE	FEATURE
ACKLAM a	SE792611	479200	461100	Cemetery	Unspecified
ACKLAM b	SE792612	479200	461200	Single Grave	Unspecified
BIRDSALL	SE824629	482400	462900	Single Grave	Barrow
BISHOP WILTON a	SE78055648	478050	456480	Single Grave	Barrow
BISHOP WILTON b	SE812563	481200	456300	Cemetery	Barrow
BISHOP WILTON c	SE82425694	482420	456940	Single Grave	Unspecified
BOYNTON	TA125674	512500	467400	Cemetery	Unspecified
DRIFFIELD a	TA01995749	501990	457490	Cemetery	Barrow
DRIFFIELD b	TA02585794	502580	457940	Single Grave	Unspecified
DRIFFIELD c	TA025579	502500	457900	Cemetery	Unspecified
DRIFFIELD II	TA020575	502000	457500	Cemetery	Barrow
DRIFFIELD III	TA029575	502900	457500	Cemetery	Unspecified
CHEESECAKE HILL	TA042578	504200	457800	Cemetery	Barrow
FIMBER	SE89406060	489400	460600	Multiple Burials	Possible Barrow
GARTON	SE980577	498000	457700	Cemetery	Barrow (square)
GARTON SLACK I	SE95666181	495600	461800	Cemetery	Earthwork
GARTON SLACK Iia	SE95006100	495000	461000	Multiple Burials	Barrow
GARTON SLACK Iib	SE980610	498000	461000	Multiple Burials	Barrow
GARTON STATION		498200	457800	Cemetery	Earthwork
GARTON II	SE988577	498800	457700	Cemetery	Barrow
KEMP HOWE, COWLAM	SE96166628	496160	466280	Cemetery	Modified Round Barrow
KILHAM d	TA047645	504700	464500	Cemetery	Unspecified
KILHAM a	TA07926598	507920	465980	Cemetery	Barrow
KILHAM b	TA05706460	505700	464600	Single Grave	Barrow
KILHAM c	TA07406450	507400	464500	Multiple Burials	Unspecified
KIRBY GRINDALYTHE	SE88046690	488040	466900	Cemetery	Barrow
KIRBY UNDERDALE a	SE823582	482300	458200	Cemetery	Barrow
KIRBY UNDERDALE b	SE827585	482700	458500	Single Grave	Barrow
UNCLEBY	SE82195941	482190	459410	Cemetery	Barrow
KIRKBURN a	SE97175757	497170	457570	Single Grave	Barrow
KIRKBURN c	SE98665752	498660	457520	Cemetery	Barrow
KIRKBURN b	TA000563	500000	456300	Cemetery	Unspecified
KIRKBURN d	TA002562	500200	456200	Single Grave	Barrow
KELLEYTHORPE	TA017567	501700	456700	Cemetery	Barrow
LANGTON	SE80326837	480320	468370	Cemetery	Barrow
NAFFERTON	TA060587	506000	458700	Cemetery	Unspecified
PAINSTHORPE WOLD (Barrow 102)	SE82465826	482460	458260	Single Grave	Barrow
PAINSTHORPE WOLD (Barrow 4)	SE8221593	482210	459300	Multiple Burials	Barrow
PAINSTHORPE WOLD II	SE829585	482900	458500	Single Grave	Barrow
PAINSTHORPE WOLD (Barrow 200)	SE82705850	482700	458500	Single Grave	Barrow
RUDSTON a	TA01756658	501750	466580	Cemetery	Barrow
RUDSTON b	TA11326721	511320	467210	Single Grave	Unspecified
RUDSTONE I	TA107665	510700	466500	Multiple Burials	Barrow
RUDSTONE II	TA097677	509700	467700	Single Grave	Unspecified
SLEDMERE	SE90766131	490760	461310	Cemetery	Unspecified
TIBTHORPE	SE941561	494100	456100	Cemetery	Unspecified
THWING	TA032708	503000	470000	Cemetery	Earthwork
WARTER	SE899531	489900	453100	Single Grave	Barrow
WHARRAM	SE83606272	483600	462720	Multiple Burials	Barrow