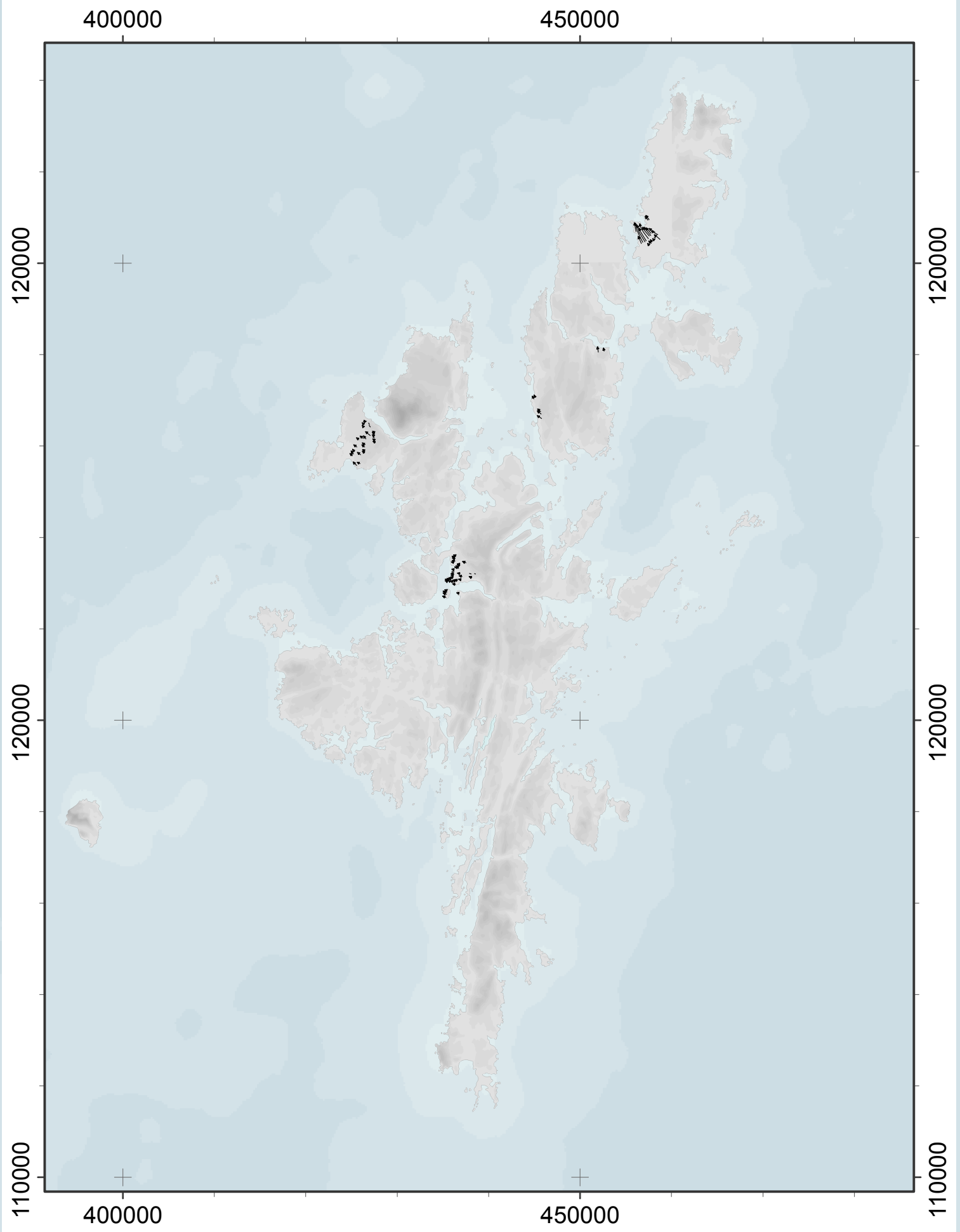
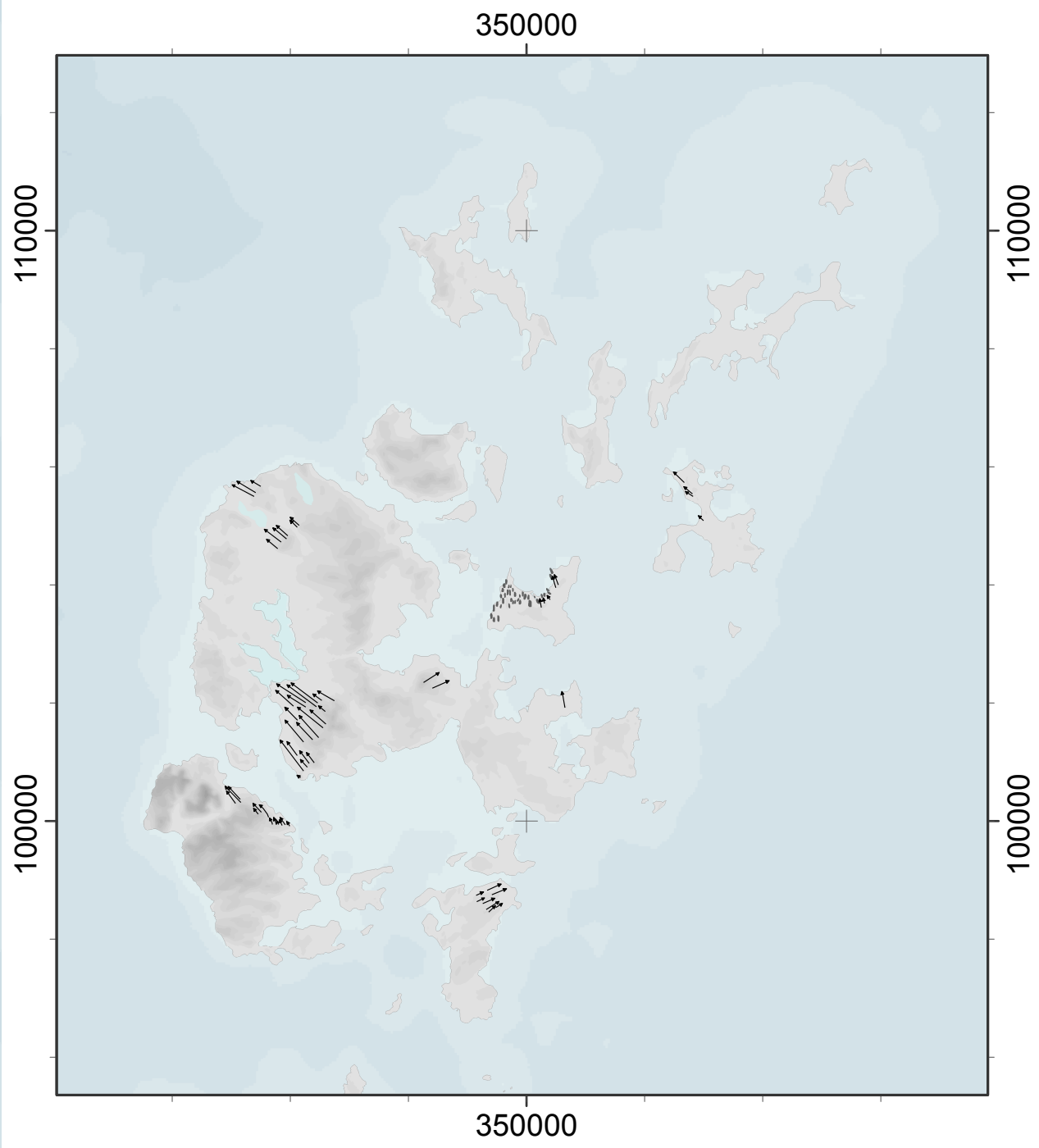


Map 2 of 5 from: Hughes, A.L.C. 2008. The last British Ice Sheet: a reconstruction based on glacial landforms, Unpublished PhD Thesis, University of Sheffield.



Legend

Drumlin

Mega-scale glacial lineation (MSGL)

Crag and tail

Minor ribbed moraine

Ribbed moraine ridge

Elevation (m.a.s.l.)
1346
0

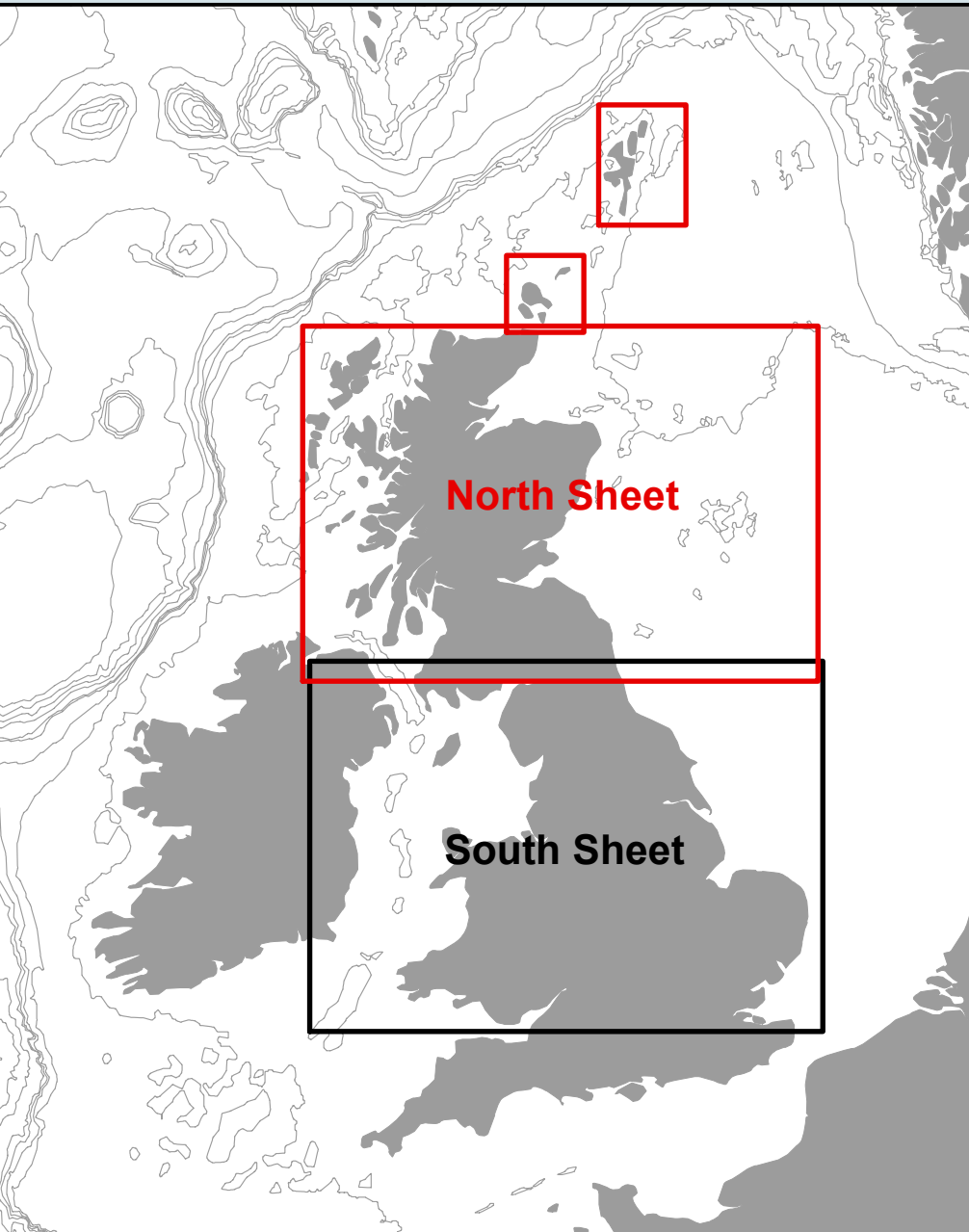
Outline of individual drumlins representing size and orientation

Crestline of individual MSGs indicating length and orientation

Line represents the orientation and length of individual crag and tail. Arrow indicates direction of drift ridge in relation to bedrock bump.

Crestline of individual minor ribbed moraine ridges

Outline of individual ribbed moraine ridges



Map 2: Subglacial bedforms of Britain

North Sheet

Scale: 1: 525 000 (when displayed at ISO A0 size)

0 10 20 40 60 80 100 km

Coordinate System: British National Grid
Datum: Ordnance Survey of Great Britain, 1936
Projection: Transverse Mercator
Spheroid: Airy
Units: metres

Elevation data from Ordnance Survey Land-Form PANORAMA DEM © Crown copyright/database right 2004. An Ordnance Survey/EDINA Digimap supplied service. Bathymetric data from GEBCO One Minute Grid. Reproduced from the GEBCO Digital Atlas published by the British Oceanographic Data Centre on behalf of IOC and IHO, 2003.

All data mapped (2004-2007) from relief shaded visualisations of the NEXTMap digital terrain and surface models and Landsat TM imagery. Datasets were obtained under licence from British Geological Survey (NERC). The Isle of Man is not covered by the NEXTMap Britain (2004) dataset. This area was mapped from lower resolution data (Ordnance Survey Land-form PANORAMA DEM). Mapping was conducted by on-screen digitisation of individual features within a Geographic Information System.