

REPRESENTATIONS OF GENDER IN SEVENTEENTH-CENTURY NETHERLANDISH
ALCHEMICAL GENRE PAINTING

ELIZABETH O'MAHONEY

TWO VOLUMES
VOLUME II

PH.D.

THE UNIVERSITY OF YORK

HISTORY OF ART

DECEMBER 2005

Note:

Reproduction of Images:

This volume includes the best quality images available to the author. The majority of these illustrations have been sourced directly from the holding institution or private individual. However, in certain circumstances it has not been possible to obtain good quality reproductions and consequently some of the pictures contained herein are reproduced from secondary sources. Where this is the case, the appropriate bibliographic information has also been cited. Occasionally, colour paintings described by the main thesis appear here in black and white.

LIST OF ILLUSTRATIONS

1. Gerrit Dou, *The Quack*, 1652, Museum Boymans-van Beuningen, Rotterdam.
2. Justus Gustav van Bentum, *The Explosion in the Alchemist's Laboratory*, date unknown, Chemical Heritage Foundation, Philadelphia 00.01.285.
3. Illustration in *Aurora Consurgens*, Zurich, Zentralbibliothek, Rhenoviensis MS 172, endpaper.
4. Pierre François Basan after David Teniers, *Le Plaisir des fous*, eighteenth century, Chemical Heritage Foundation, Philadelphia 00.03.196.
5. David Teniers the Younger, *Alchemist Heating a Pot*, c.1660, Private Collection. Currently with the Chemical Heritage Foundation, Philadelphia.
6. Hendrick Heerschop, *The Alchemist's Experiment Takes Fire*, 1687, Chemical Heritage Foundation, Philadelphia 00.01.276.
7. Adriaen van Ostade, *The Alchemist*, 1661, National Gallery, London NG846.
8. Emblem III. William de Pass after Adriaen van de Venne, *This Body, What Is It, But Stink and Dung? De Brune, Emblemata of Zinne-werck* (Amsterdam, 1624), 17.
9. Aert van Waes, *Painter Defecating on Palette and Brushes*, 1645. (De Jongh and Luijten, 1997: 251).
10. Adriaen van de Venne, *Rijcke-Armoede*, 1630, Chemical Heritage Foundation, Philadelphia 00.01.284.
11. Pieter Bruegel the Elder, *The Alchemist*, 1558, Philadelphia Museum of Art, Pennsylvania. Engraved by Phillippe Galle, distributed by Hieronymus Cock.
12. Richard Brakenburgh, *An Alchemist's Workshop with Children Playing*, c.1685, Chemical Heritage Foundation, Philadelphia 00.03.11.
13. Jan Steen, *The Last Coin [or De Alchimist]*, 1665, Städelsches Kunstinstitut, Frankfurt.
14. Jan Steen, *The Village Alchemist*, early 1660s, The Wallace Collection, London P209.
15. Artist unknown, *Trouble Comes to the Alchemist*, date unknown, Chemical Heritage Foundation, Philadelphia 00.01.269.
16. Hendrick Bary after Frans van Mieris, *Old Hag Print*, mid-1650s, Rijksprentenkabinet, Rijksmuseum, Amsterdam. (De Jongh and Luijten, 1997: 337).
17. David Teniers, *The Alchemist*, c.1645, Herzog Anton Ulrich Museum, Braunschweig. (Davidson, 1980: Plate 25).
18. Francisius van der Steen after David Teniers, *Couple Weighing Money*, c.1655, Rijksprentenkabinet, Rijksmuseum, Amsterdam. (De Jongh and Luijten, 1997: 291).

19. Jan van der Bruggen after David Teniers, *Couple Weighing Money*, c.1690, Bibliotheque Nationale de France, Paris.
20. Jan van der Bruggen after David Teniers, *Couple Weighing Money*, c.1690, Stichting Atlas van Stolk, Rotterdam.
21. Roman School, *The Alchemist in his Study*, late seventeenth century, Chemical Heritage Foundation, Philadelphia 00.03.39.
22. Thomas Wijck, *The Alchemist #1*, date unknown, Chemical Heritage Foundation, Philadelphia 00.03.05.
23. Emblem XXII. Maier *Atalanta Fugiens* (Oppenheim 1618), 97. Engraved by Theodor de Bry.
24. Thomas Wijck, *The Alchemist #3*, date unknown, Chemical Heritage Foundation, Philadelphia 00.03.06.
25. Pieter de Hooch, *A Woman Peeling Apples*, c.1663, The Wallace Collection, London P23.
26. Thomas Wijck, *An Alchemist in his Study with a Woman Making Lace*, date unknown, Chemical Heritage Foundation, Philadelphia 00.01.208.
27. Thomas Wijck, *The Alchemist #4*, date unknown, Rijksmuseum, Amsterdam SK-A-489.
28. Thomas Wijck, *An Alchemist at Work with a Mother by a Cradle*, date unknown, Chemical Heritage Foundation, Philadelphia 00.03.35.
29. Caspar Netscher, *The Lace-Maker*, 1662, The Wallace Collection, London P237.
30. Frontispiece. After Adriaen van de Venne, *Maeghde-Wapen* [Maiden's Coat of Arms]. Cats, *Houwelick* (Middelburg, 1625).
31. Gerrit Dou, *The Young Mother*, 1658, Royal Cabinet of Paintings, Mauritshuis, The Hague.
32. Gerrit Dou, *The Schoolmaster*, 1672, Chemical Heritage Foundation, Philadelphia 00.03.34.
33. Caspar Netscher, *Maternal Instruction* [Full title: *A Lady Teaching a Child to Read, and a Child Playing with a Dog (La Maîtresse d'école)*], 1670s, National Gallery, London NG844.
34. Michiel Nouts, attributed, *Family Group*, c.1655, National Gallery, London NG1699.
35. Plate IV, *Splendor Solis*, 1582, London, British Library, Harley MS 3469, fol. 10^r.
36. 'Columns of urine flasks', *Epiphaniae Medicorum*, 1506, London, Wellcome Library fol. A2^r, L0013700.
37. Frontispiece. Blankaart, *Anatomia practica rationalis* (Amsterdam, c.1688), Wellcome Library, London L0005251.

38. Joseph Wright, *The Alchemist, in Search of the Philosopher's Stone, Discovers Phosphorus, and Prays for the Successful Conclusion of his Operation*, 1771, Derby Museum and Art Gallery.
39. 'Physician examining urine fask, the woman who has brought it standing by, holding fask basket'. Anon., *Herbarius zu Teutsch* (Mainz, 1485). Wellcome Library, London M0017048/00.
40. A Follower of David Teniers (Mattheus van Helmont?), *A Physician-Alchemist Examining a Urine Flask*, date unknown, Wellcome Library, London 44733i.
41. Mattheus van Helmont (formerly attributed to David Ryckaert), *An Alchemist*, c.1640, San Diego Museum of Art, California.
42. Egbert van Heemskerck, *Man Examining a Urine Flask*, date unknown, Wellcome Library, London 44713i.
43. Godfried Schalcken, *Visit to the Doctor*, 1669, Private Collection, Germany, on loan to Wallraf-Richartz-Museum, Cologne.
44. Godfried Schalcken, *Doctor's Visit*, c.1660-70, Royal Cabinet of Paintings, Mauritshuis, The Hague 161.
45. David Ryckaert, *Scholar with Homunculus in Glass Vial*, c.1649, on loan to Reiß-Museum der Stadt Mannheim. (Property of the Land Baden-Württemberg, loan of the Staatliche Kunsthalle Karlsruhe.)
46. In the style of Gerard Thomas, *Science*, late seventeenth century, Chemical Heritage Foundation, Philadelphia 00.01.265.
47. Balthasar van den Bossche, *Physician in his Study*, late seventeenth century, Wellcome Library, London 47325i.
48. Gerard Thomas, *A Physician Examining a Urine Flask #1*, late seventeenth century, Wellcome Library, London 47322i.
49. Gerard Thomas, *A Physician Examining a Urine Flask #2*, c.1700, Wellcome Library, London 45026i.
50. In the style of Gerard Thomas, *A Physician Examining a Urine Flask #3*, c.1710-25, Wellcome Library, London 47323i.
51. Emblem V. Maier, *Symbola aureae mensae duodecim nationum...* (Frankfurt, 1617). (Klossowski de Rola, 1997: 110).
52. Frontispiece. Maier, *Symbola aureae mensae duodecim nationum...* (Frankfurt, 1617). (Klossowski de Rola, 1997: 107).
53. Plate XXI, *Splendor Solis*, 1582, London, British Library, Harley MS 3469, fol. 32^v.
54. Emblem III. Maier, *Atalanta Fugiens* (Oppenheim, 1618), 21. Engraved by Theodor de Bry.
55. Altus pseud. *Mutus Liber* (La Rochelle, 1677), 7.

56. David Ryckaert, *The Alchemist*, c.1642, Szépművészeti Museum, Budapest.
57. David Ryckaert, *The Alchemist*, c.1648, Musée des Beaux-Arts André Malraux, Le Havre 77-19.
58. David Ryckaert, *The Alchemist in his Laboratory*, 1648, Koninklijke Musea voor Schone Kunsten van België, Brussels 156.
59. David Ryckaert, *The Alchemist with his Wife in the Workshop*, 1648, Museum der Bildenden Kunst, Leipzig I.350.
60. David Ryckaert, *The Alchemist with his Wife in the Laboratory*, 1649, location unknown. (Van Haute, 1999: 333).
61. David Ryckaert, *The Alchemist and his Wife*, c.1655-60, Kromeríz Castle, the Czech Republic.
62. David Ryckaert, *The Cobbler*, c.1644-49, Bally Schuhmuseum, Schönenwerd, Switzerland.
63. Thomas Wijck, *An Alchemist in his Study*, date unknown, Wellcome Library, London 45100i.
64. Thomas Wijck, *Interior with an Alchemist Making a Gesture of Surprise, and a Female Assistant*, date unknown, Wellcome Library, London 45093i.
65. Thomas Wijck, *The Alchemist and Death*, date unknown, Wisconsin collection of Drs. Alfred and Isabel Bader, Milwaukee. (Russell Corbett, 2004: 162).
66. Charles Meer Webb, *The Search for the Alchemical Formula*, 1858, Chemical Heritage Foundation, Philadelphia 00.01.281.



Fig. 1 Gerrit Dou, *The Quack*, 1652, Museum Boymans-van Beuningen, Rotterdam. Oil on panel, 112 cm x 83 cm. Signed: *Gdov 1652*. Provenance: presented to Museum Boymans in 1939; W. van der Vorm, Rotterdam; Arthur Goldschmidt; Elector Maximilian IV Joseph (d.1815), Düsseldorf and Munich; Elector Carl Theodor (d.1799), Düsseldorf; Elector Carl Philipp (d.1742), Düsseldorf; Johann Wilhelm, Elector Palatine (d.1716), Düsseldorf.



Fig. 2 Justus Gustav van Bentum, *The Explosion in the Alchemist's Laboratory*, date unknown, Chemical Heritage Foundation, Philadelphia 00.01.285. Oil on canvas, 46" x 37". Provenance: Fisher Collection.

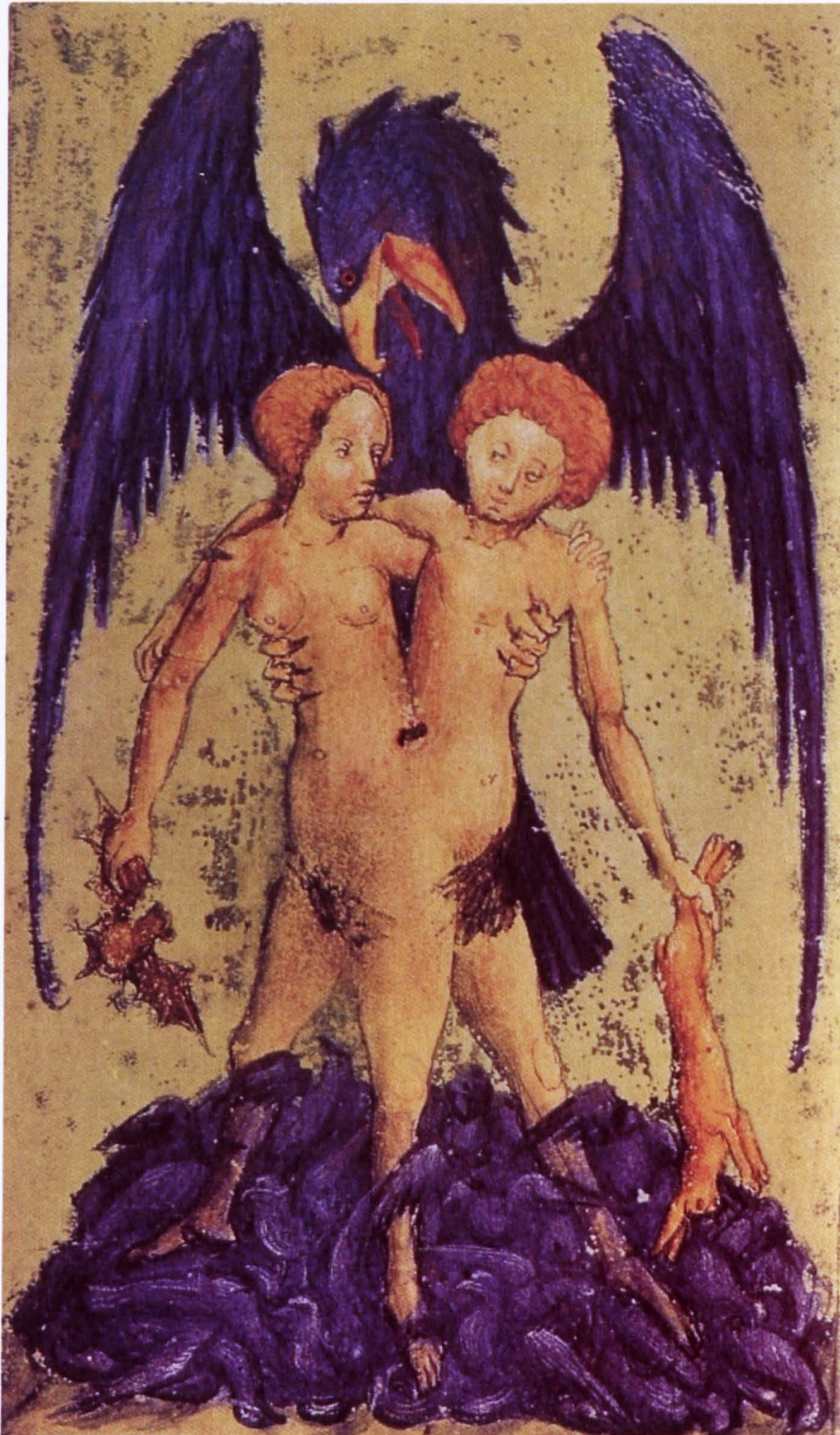


Fig. 3 Illustration in *Aurora Consurgens*, Zurich, Zentralbibliothek, Rhenoviensis MS 172, endpaper.



Fig. 4 Pierre François Basan after David Teniers, *Le Plaisir des fous*, eighteenth century, Chemical Heritage Foundation, Philadelphia 00.03.196.



Fig. 5 David Teniers the Younger, *Alchemist Heating a Pot*, c.1660, Private Collection. Currently with the Chemical Heritage Foundation, Philadelphia 00.03.26. Oil on panel, 16" x 12".



Fig. 6 Hendrick Heerschop, *The Alchemist's Experiment Takes Fire*, 1687, Chemical Heritage Foundation, Philadelphia 00.01.276. Oil on canvas laid down on board, 21" x 17 1/2". Provenance: Fisher Scientific; Sir William Jackson Pope, May 1928 (Berolzheimer information from Pope); van Duren Gallery, London, 1928 (RKD photo).



Fig. 7 Adriaen van Ostade, *The Alchemist*, 1661, National Gallery, London NG846. Oil on oak, 34 cm x 45.2 cm. Signed and dated near the fireplace: *Av. Ostade*. Provenance: bought with the Peel collection, 1871.



Fig. 8 Emblem III. William de Pass after Adriaen van de Venne, *This Body, What Is It, But Stink and Dung?* De Brune, *Emblemata of Zinne-werck* (Amsterdam, 1624), 17.



Fig. 9 Aert van Waes, *Painter Defecating on Palette and Brushes*, 1645. (De Jongh and Luijten, 1997: 251).



Fig. 10 Adriaen van de Venne, *Rijcke-Armoede*, 1630, Chemical Heritage Foundation, Philadelphia 00.01.284. Oil on panel, 15" x 19 1/2". Signed and dated lower centre. Provenance: Fisher Collection; gift of Fisher Scientific International.



Fig. 11 Pieter Bruegel the Elder, *The Alchemist*, 1558, Philadelphia Museum of Art, Pennsylvania. Engraved by Phillipe Galle, distributed by Hieronymus Cock.



Fig. 12 Richard Brakenburgh, *An Alchemist's Workshop with Children Playing*, c.1685, Chemical Heritage Foundation, Philadelphia 00.03.11. Oil on canvas, 30" x 34".



Fig. 13 Jan Steen, *The Last Coin* [or *De Alchemist*], 1665, Städelsches Kunstinstitut, Frankfurt. Oil on canvas, 34 cm x 28.5 cm. Sales by auction: A. Sijdervelt, Amsterdam (23 April 1766), Holderness, London (6 March 1802), entered collection of Eduard Gustav May in 1842.



Fig. 14 Jan Steen, *The Village Alchemist*, early 1660s, The Wallace Collection, London P209. Oak panel, 41.7 cm x 29.8 cm x 0.4 cm. Signed upper right. Provenance: Hertford House inventory 1870; Dorchester House inventory 1842; with 3rd Marquess of Hertford by 1833; Christie's (25 April 1801); Charles Leviez, Langford (29 April 1762); probably Jan Jacob van Mansvelt sale, Utrecht (8 April 1755).



Fig. 15 Artist unknown, *Trouble Comes to the Alchemist*, date unknown, Chemical Heritage Foundation, Philadelphia 00.01.269. Oil on wood panel, 30 1/2" x 21 1/2". Provenance: Fisher Collection. Previously attributed to Pieter van Slingelandt.



Fig. 16 Hendrick Bary after Frans van Mieris, *Old Hag Print*, mid-1650s, Rijksprentenkabinet, Rijksmuseum, Amsterdam. (De Jongh and Luijten, 1997: 337).



Fig. 17 David Teniers, *The Alchemist*, c.1645, Herzog Anton Ulrich Museum, Braunschweig. (Davidson, 1980: Plate 25).



Fig. 18 Francisus van der Steen after David Teniers, *Couple Weighing Money*, c.1655, Rijksprentenkabinet, Rijksmuseum, Amsterdam. (De Jongh and Luyten, 1997: 291). Provenance: Collection P. C. Baron van Leyden, Koninklijke Bibliothek, The Hague (Lugt 240) inv. RP-P-OB-59.901. Possibly after: David Teniers, *Elderly Couple Weighing Money*, Collection of Suzanne and Norman Hascoe.



Fig. 19 Jan van der Bruggen after David Teniers, *Couple Weighing Money*, c.1690, Bibliotheque Nationale de France, Paris. Mezzotint, 29.5 cm x 21.7 cm.



Fig. 20 Jan van der Bruggen after David Teniers, *Couple Weighing Money*, c.1690, Stichting Atlas van Stolk, Rotterdam. Mezzotint, 26.7 cm x 19.3 cm.



Fig. 21 Roman School, *The Alchemist in his Study*, late seventeenth century, Chemical Heritage Foundation, Philadelphia 00.03.39. Oil on canvas, 19" x 25". Provenance: Eddleman Collection.



Fig. 22 Thomas Wijck, *The Alchemist #1*, date unknown, Chemical Heritage Foundation, Philadelphia 00.03.05. Oil on panel, 18 1/2" x 15 1/2". Provenance: Eddleman Collection.



Fig. 23 Emblem XXII. Maier *Atalanta Fugiens* (Oppenheim 1618), 97. Engraved by Theodor de Bry.



Fig. 24 Thomas Wijck, *The Alchemist #3*, date unknown, Chemical Heritage Foundation, Philadelphia 00.03.06. Oil on panel, 19 5/8" x 15 1/2". Provenance: Eddleman Collection.



Fig. 25 Pieter de Hooch, *A Woman Peeling Apples*, c.1663, The Wallace Collection, London P23. Oil on (relined) canvas, 67.1 cm x 54.7 cm. Provenance: Hertford House inventory 1870; Perier Sale, Christie's, 5 May 1848, by 4th Marquess of Hertford.



Fig. 26 Thomas Wijck, *An Alchemist in his Study with a Woman Making Lace*, date unknown, Chemical Heritage Foundation, Philadelphia 00.01.208. Oil on panel, 18 1/4" x 15". Provenance: Fisher Collection; gift of Fisher Scientific International.

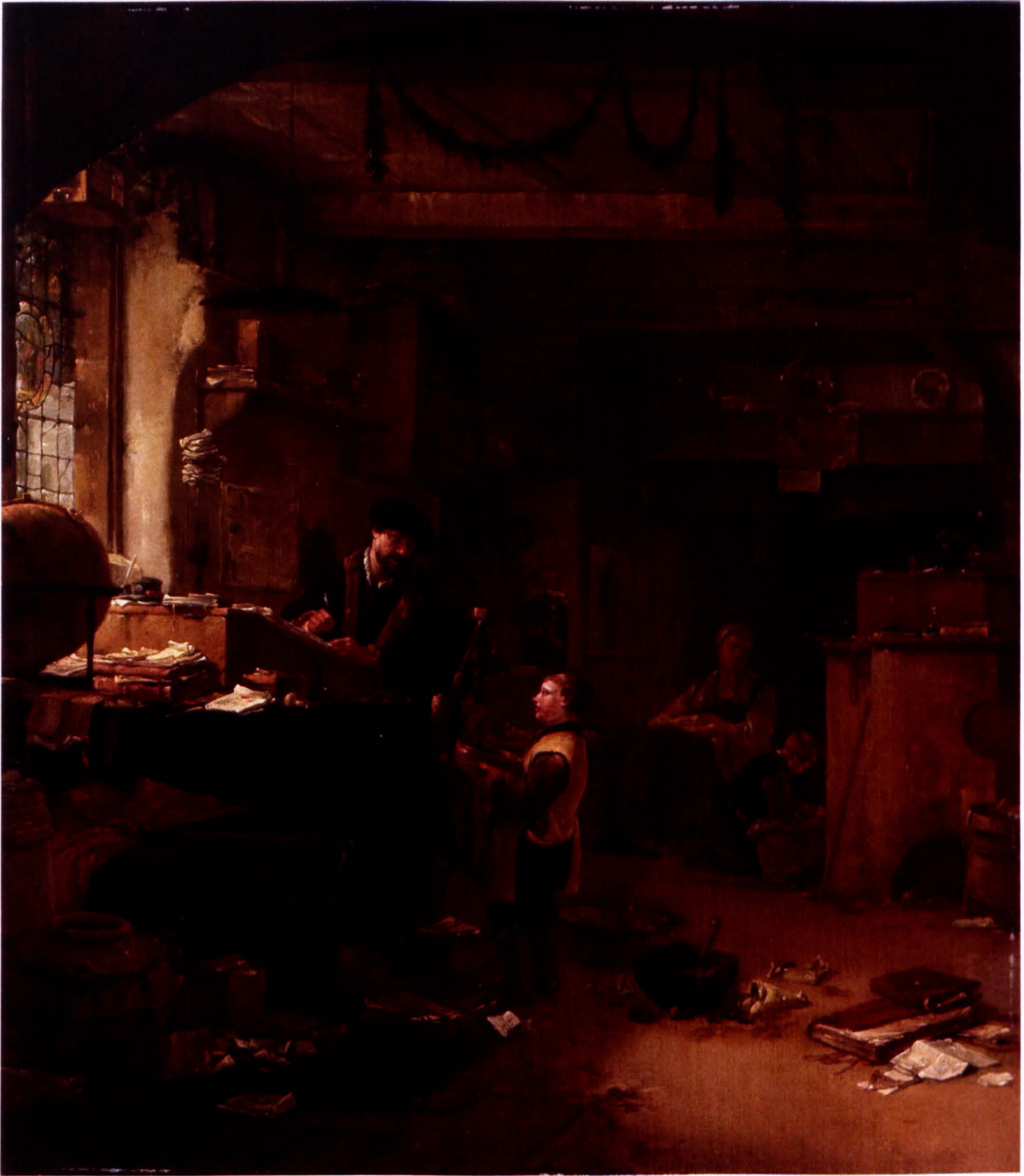


Fig. 27 Thomas Wijck, *The Alchemist #4*, date unknown, Rijksmuseum, Amsterdam SK-A-489. Oil on panel, 43 cm x 37.5 cm. Signed. Provenance: Rijksmuseum acquisition, 1870.



Fig. 28 Thomas Wijck, *An Alchemist at Work with a Mother by a Cradle*, date unknown, Chemical Heritage Foundation, Philadelphia 00.03.35. Oil on panel, 47 cm x 31 cm. Provenance: Eddleman Collection.



Fig. 29 Caspar Netscher, *The Lace-Maker*, 1662, The Wallace Collection, London P237. Oil on (relined) canvas, 33 cm x 27 cm. Signed: *C. Netscher 1662*. Provenance: Hertford House inventory, 1870; Dorchester House inventory 1842; 3rd Marquess of Hertford, 1804; Diederick van Leyden, Amsterdam; probably P.C. van Leyden, 1780; Johan Pompe van Meerdervoort; possibly Jacob Vallensis, Delft inventory 1725.

MAEGHDE-WAPEN.



Als eenigh Vorst eē wapen geeft | Of in den krūgh, of inden Raet,
 Aen die hem wel gequetē heeft | Tot voordeel van den ganschen Staet,
 I (***) ij Het

Fig. 30 Frontispiece. After Adriaen van de Venne, *Maeghde-Wapen* [Maiden's Coat of Arms]. Cats, *Houwelick* (Middelburg, 1625).



Fig. 31 Gerrit Dou, *The Young Mother*, 1658, Royal Cabinet of Paintings, Mauritshuis, The Hague. Oil on panel, 73.5 cm x 55.5 cm (arched top). Signed: *GDov 1658*. Provenance: Mauritshuis, 1821; King William I, The Hague 1815; Louvre, Paris 1795-1815; William V, The Hague, 1763-95.



Fig. 32 Gerrit Dou, *The Schoolmaster*, 1672, Chemical Heritage Foundation, Philadelphia 00.03.34. Oil on panel, 43 cm x 32 cm. Provenance: Eddleman Collection.



Fig. 33 Caspar Netscher, *Maternal Instruction* [Full title: *A Lady Teaching a Child to Read, and a Child Playing with a Dog (La Maîtresse d'école)*], 1670s, National Gallery, London NG844. Oil on oak, 45.1 cm x 37 cm. Provenance: bought with the Peel collection, 1871.



Fig. 34 Michiel Nouts, attributed, *Family Group*, c.1655, National Gallery, London NG1699. Oil on canvas, 178 cm x 235 cm. Provenance: the left half presented to National Gallery by Charles Fairfax Murray, 1900; the right half bought, 1910.

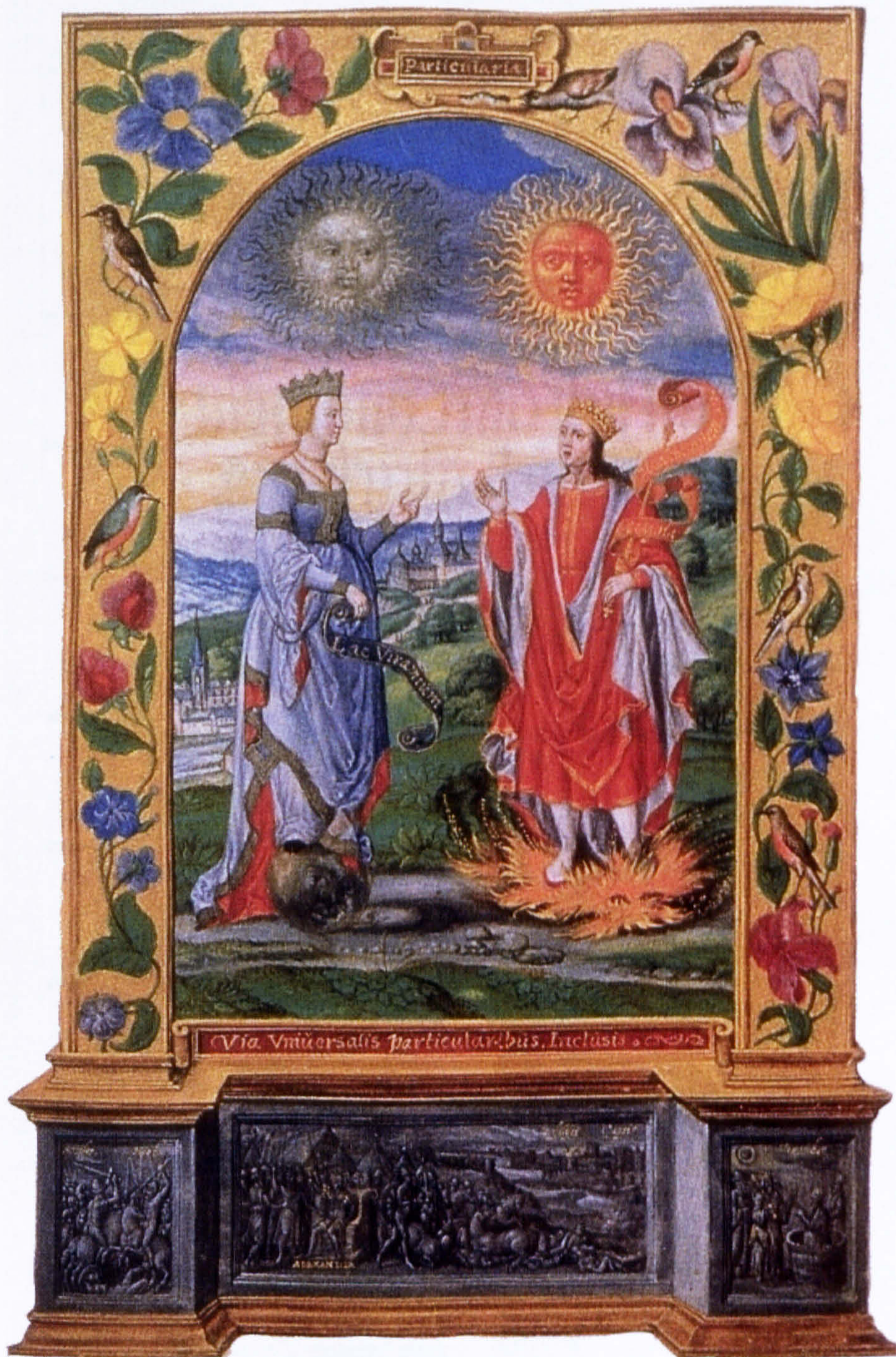


Fig. 35 Plate IV, *Splendor Solis*, 1582, London, British Library, Harley MS 3469, fol. 10r.

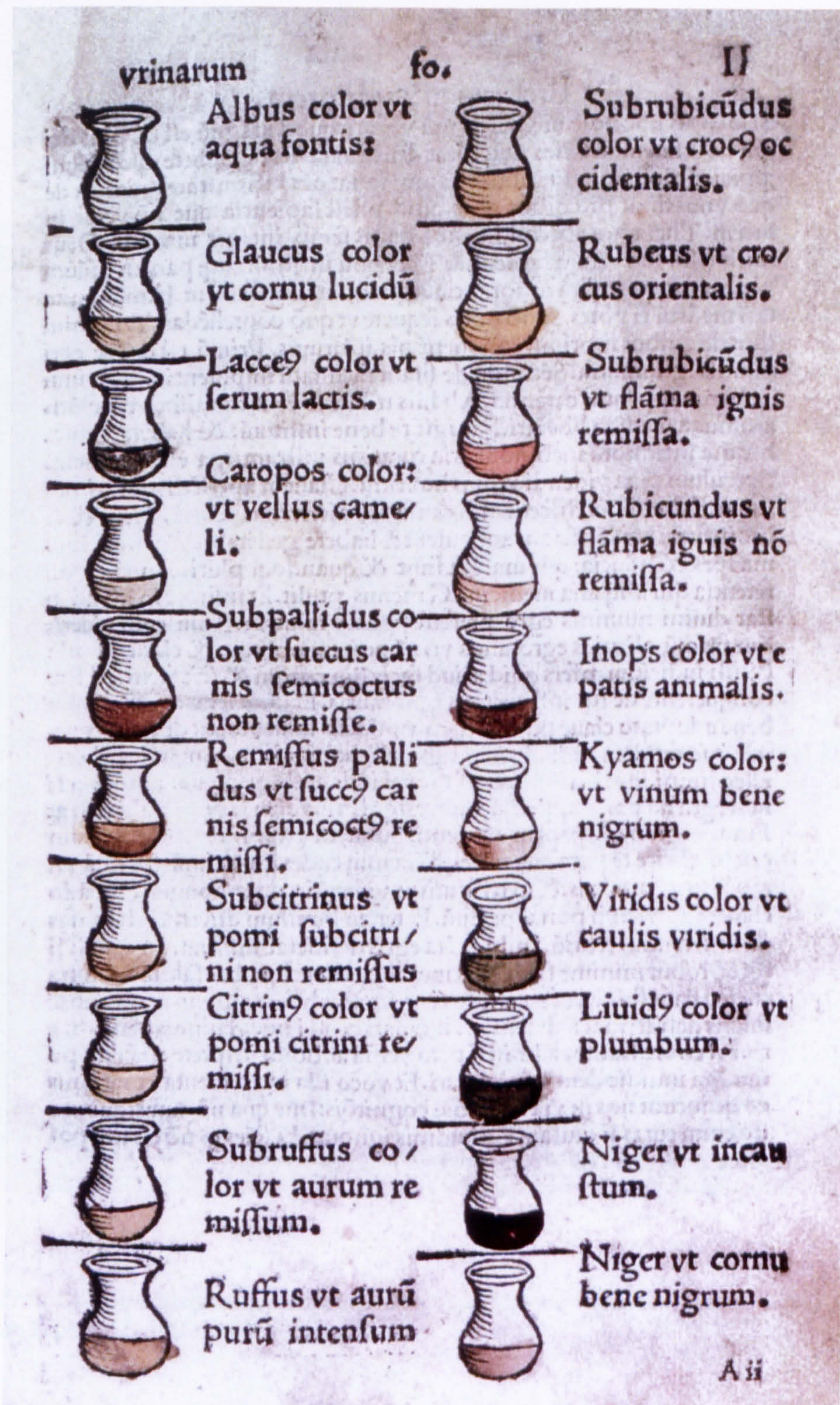


Fig. 36 'Columns of urine flasks', *Epiphaniae Medicorum*, 1506, London, Wellcome Library fol. A2^r, L0013700.

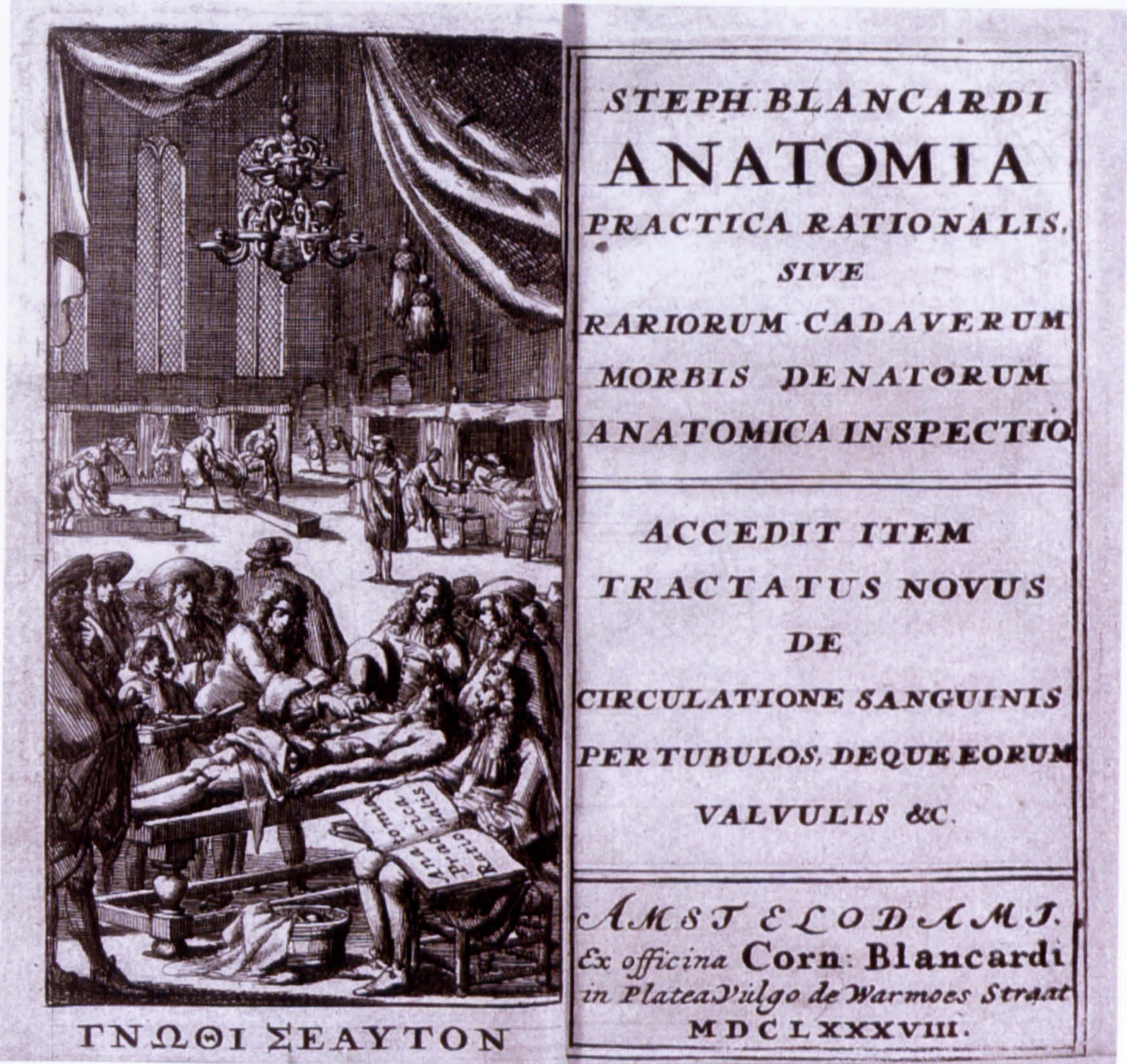


Fig. 37 Frontispiece. Blankaart, *Anatomia practica rationalis* (Amsterdam, c.1688), Wellcome Library, London L0005251.

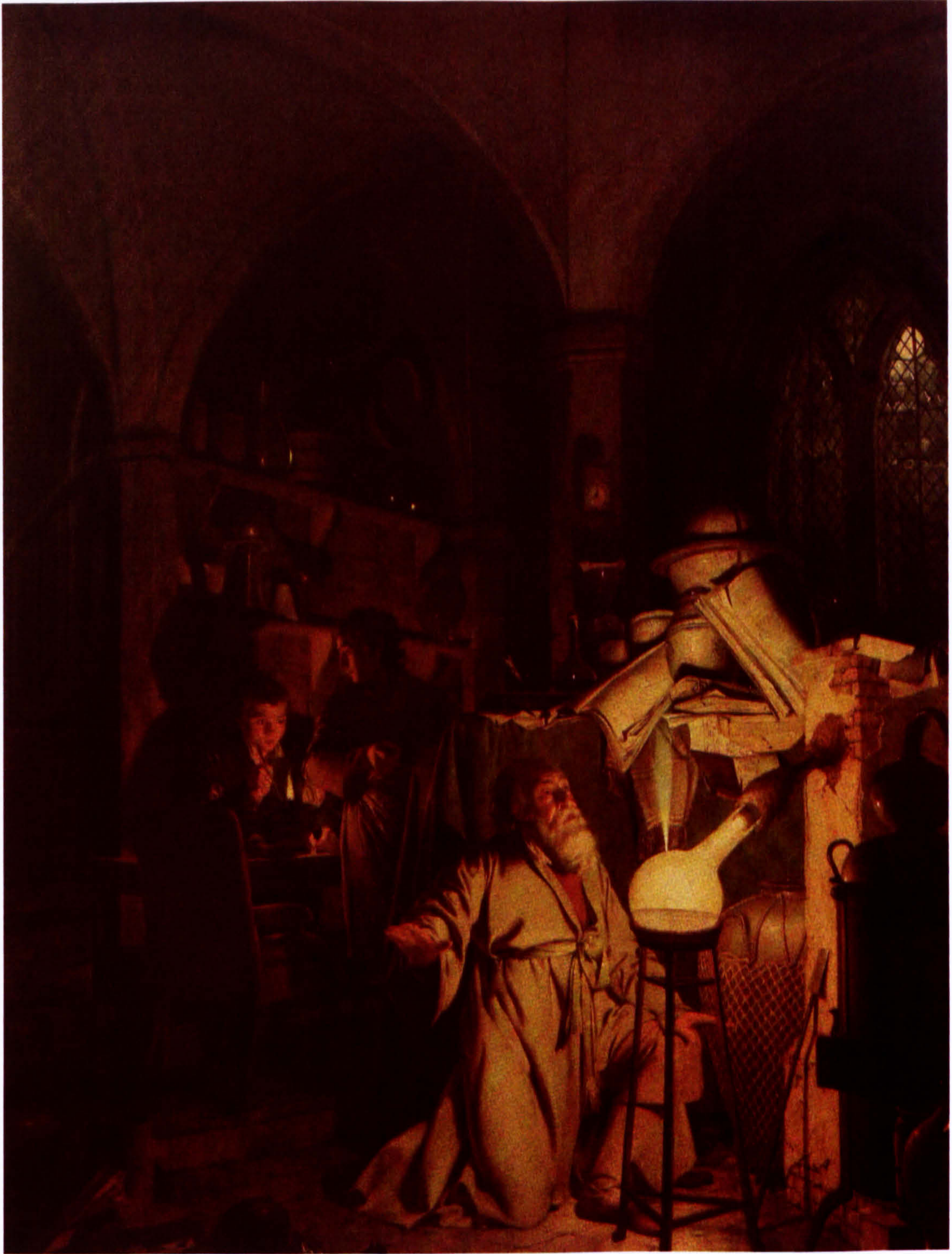


Fig. 38 Joseph Wright, *The Alchemist, in Search of the Philosopher's Stone, Discovers Phosphorus, and Prays for the Successful Conclusion of his Operation*, 1771, Derby Museum and Art Gallery. Oil on canvas, 127 cm x 101.6 cm. Provenance: sold at Christie's on 6 May 1801, as Lot 62 under the title "The Alchemist in his Laboratory with Assistants" for £80.17.0.



Fig. 39 'Physician examining urine fask, the woman who has brought it standing by, holding fask basket'. Anon., *Herbarius zu Teutsch* (Mainz, 1485). Wellcome Library, London M0017048/00.



Fig. 40 A Follower of David Teniers (Mattheus van Helmont?), *A Physician-Alchemist Examining a Urine Flask*, date unknown, Wellcome Library, London 44733i. Oil on canvas, 41.1 cm x 57.3 cm. Provenance: with the Wellcome collection by 1913 ('Handbook of the Historical Medical Museum', London: 1913, probably no. 105 "The urologist").



Fig. 41 Mattheus van Helmont (formerly attributed to David Ryckaert), *An Alchemist*, c.1640, San Diego Museum of Art, California. Oil on canvas, 22 7/16" x 26 1/8". Provenance: gift of Mrs Henry A. Everett 1932: 094.



Fig. 42 Egbert van Heemskerck, *Man Examining a Urine Flask*, date unknown, Wellcome Library, London 44713i. Oil on canvas, 63.5 cm x 76 cm.



Fig. 43 Godfried Schalcken, *Visit to the Doctor*, 1669, Private Collection, Germany, on loan to Wallraf-Richartz-Museum, Cologne. Oil on panel, 13 3/8" x 11 3/8". Signed and dated: 1669 G Schalcken.



Fig. 44 Godfried Schalcken, *Doctor's Visit*, c.1660-70, Royal Cabinet of Paintings, Mauritshuis, The Hague 161. Oil on panel, 35 cm x 28.5 cm. Signed: *G. Schalcken*.



Fig. 45 David Ryckaert, *Scholar with Homunculus in Glass Vial*, c.1649, on loan to Reiß-Museum der Stadt Mannheim. (Property of the Land Baden-Württemberg, loan of the Staatliche Kunsthalle Karlsruhe). Oil on panel, 59.1 cm x 78.8 cm. Provenance: Mannheim, Schloss, Großherzogliche Gemäldegalerie.



Fig. 46 In the style of Gerard Thomas, *Science*, late seventeenth century, Chemical Heritage Foundation, Philadelphia 00.01.265. Oil on canvas, mounted on board. 32" x 48".
Provenance: gift of Fisher Scientific International; Sotheby's, London, 26 April 1929, lot 110; Lord Acton.



Fig. 47 Balthasar van den Bossche, *Physician in his Study*, late seventeenth century, Wellcome Library, London 47325i. Oil on canvas, 86 cm x 120.5 cm.



Fig. 48 Gerard Thomas, *A Physician Examining a Urine Flask #1*, late seventeenth century, Wellcome Library, London 47322i. Oil on canvas, 69.5 cm x 87.6 cm. Signed: *G. Thomas*.



Fig. 49 Gerard Thomas, *A Physician Examining a Urine Flask #2*, c.1700, Wellcome Library, London 45026i. Oil on canvas, 68.4 cm x 85.5 cm. Signed: *G. Thomas. Fecit.* Provenance: formally accessioned into Wellcome collection 1 May 1947; Christie's stencil 257 DJ; Lord Ashbrooke's Collection 1 November 1847.



Fig. 50 In the style of Gerard Thomas, *A Physician Examining a Urine Flask #3*, c.1710-25, Wellcome Library, London 47323i. Oil on canvas, 62.7 cm x 81.5 cm.

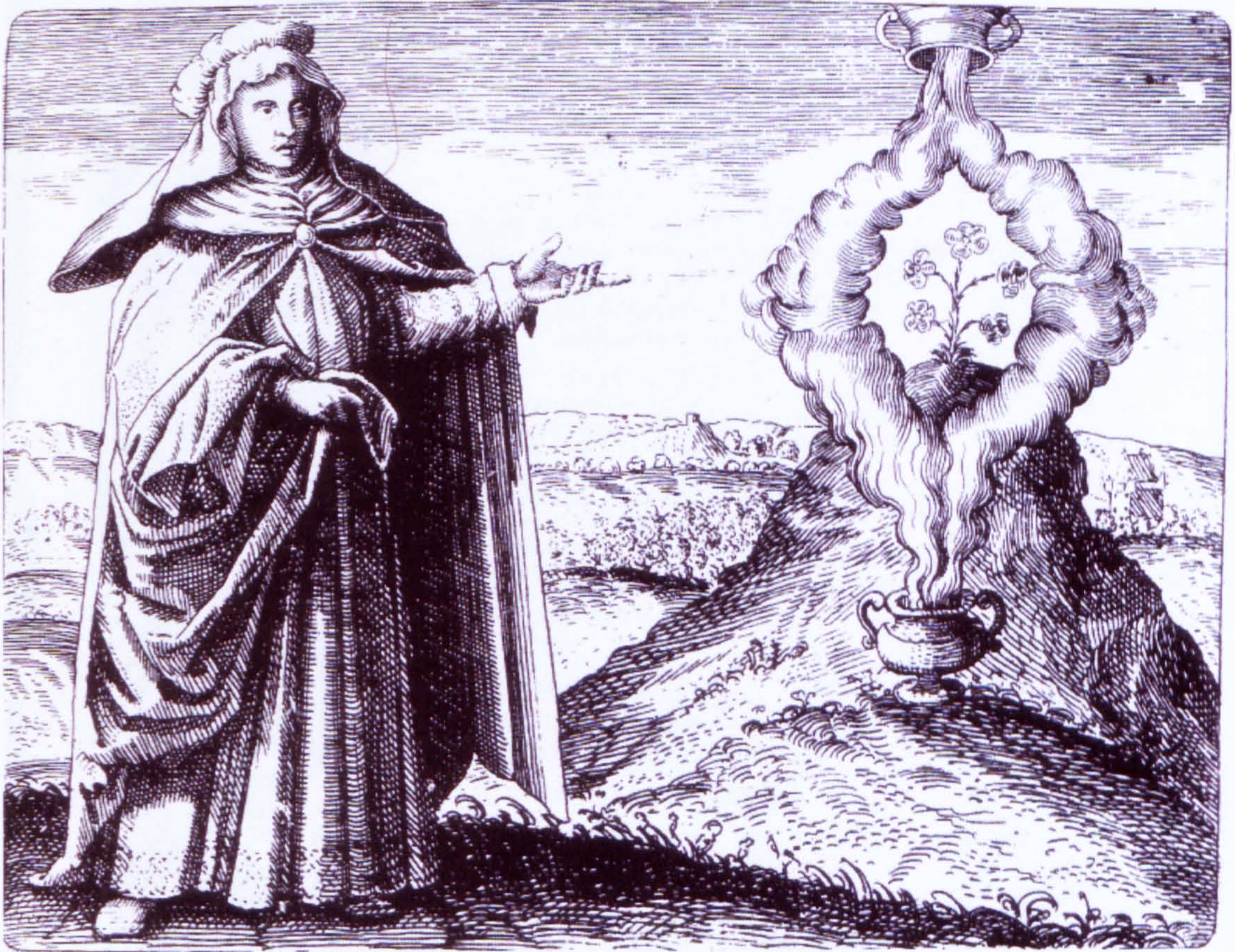


Fig. 51 Emblem V. Maier, *Symbola aureae mensae duodecim nationum...* (Frankfurt, 1617). (Klossowski de Rola, 1997: 110).

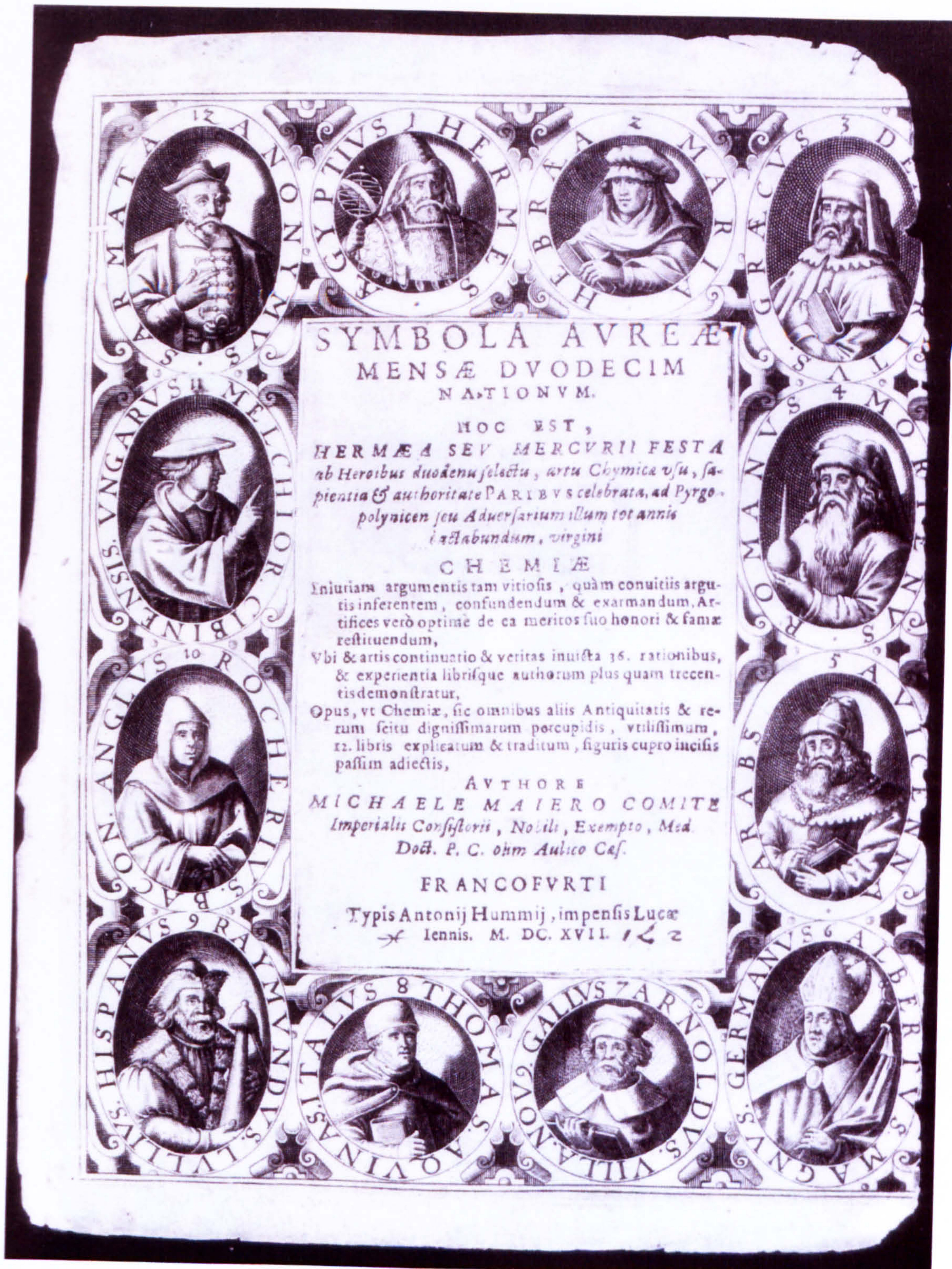


Fig. 52 Frontispiece. Maier, *Symbola aureae mensae duodecim nationum...* (Frankfurt, 1617). (Klossowski de Rola, 1997: 107).



Fig. 53 Plate XXI, *Splendor Solis*, 1582, London, British Library, Harley MS 3469, fol. 32^v.



Fig. 54 Emblem III. Maier, *Atalanta Fugiens* (Oppenheim, 1618), 21. Engraved by Theodor de Bry.

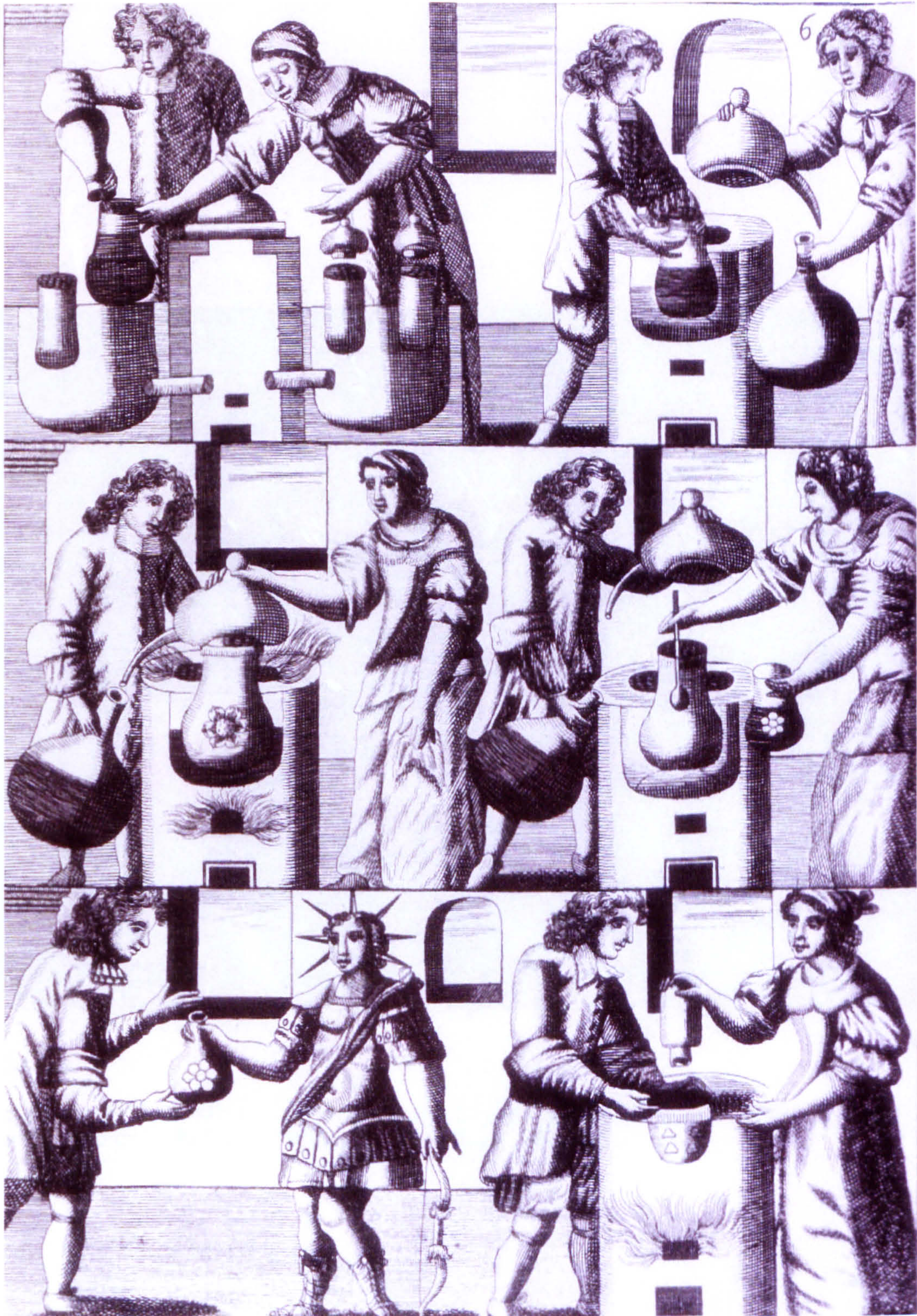


Fig. 55 Altus pseud. *Mutus Liber* (La Rochelle, 1677), 7.



Fig. 56 David Ryckaert, *The Alchemist*, c.1642, Szépművészeti Museum, Budapest. Oil on canvas, 60.5 cm x 80.5 cm. Provenance: Esterházy Collection.



Fig. 57 David Ryckaert, *The Alchemist*, c.1648, Musée des Beaux-Arts André Malraux, Le Havre 77-19. Oil on canvas. Signed and dated: *D. Rijckaert 1648*.



Fig. 58 David Ryckaert, *The Alchemist in his Laboratory*, 1648, Koninklijke Musea voor Schone Kunsten van België, Brussels 156. Oil on canvas, 66 cm x 87.5 cm. Signed and dated: *D. Rijkar... f 1648*. Provenance: auction Brussels, P.-F. Tiberghien 22 May 1827, number 253.



Fig. 59 David Ryckaert, *The Alchemist with his Wife in the Workshop*, 1648, Museum der Bildenden Kunst, Leipzig I.350. Oil on panel, 42 cm x 62 cm. Signed and dated: *D. Ryckaert f. 1648*. Provenance: Clauß bequest, 1861.



Fig. 60 David Ryckaert, *The Alchemist with his Wife in the Laboratory*, 1649, location unknown. (Van Haute, 1999: 333). Oil on panel, 40.6 cm x 62.2 cm. Signed and dated: *D. Ryckaert 1649*. Provenance: auction London, Christie's 5 April 1963, number 37.



Fig. 61 David Ryckaert, *The Alchemist and his Wife*, c.1655-60, Kromeriz Castle, the Czech Republic. Oil on canvas, 56 cm x 67 cm.



Fig. 62 David Ryckaert, *The Cobbler*, c.1644-49, Bally Schuhmuseum, Schönenwerd, Switzerland. Signed: DR.

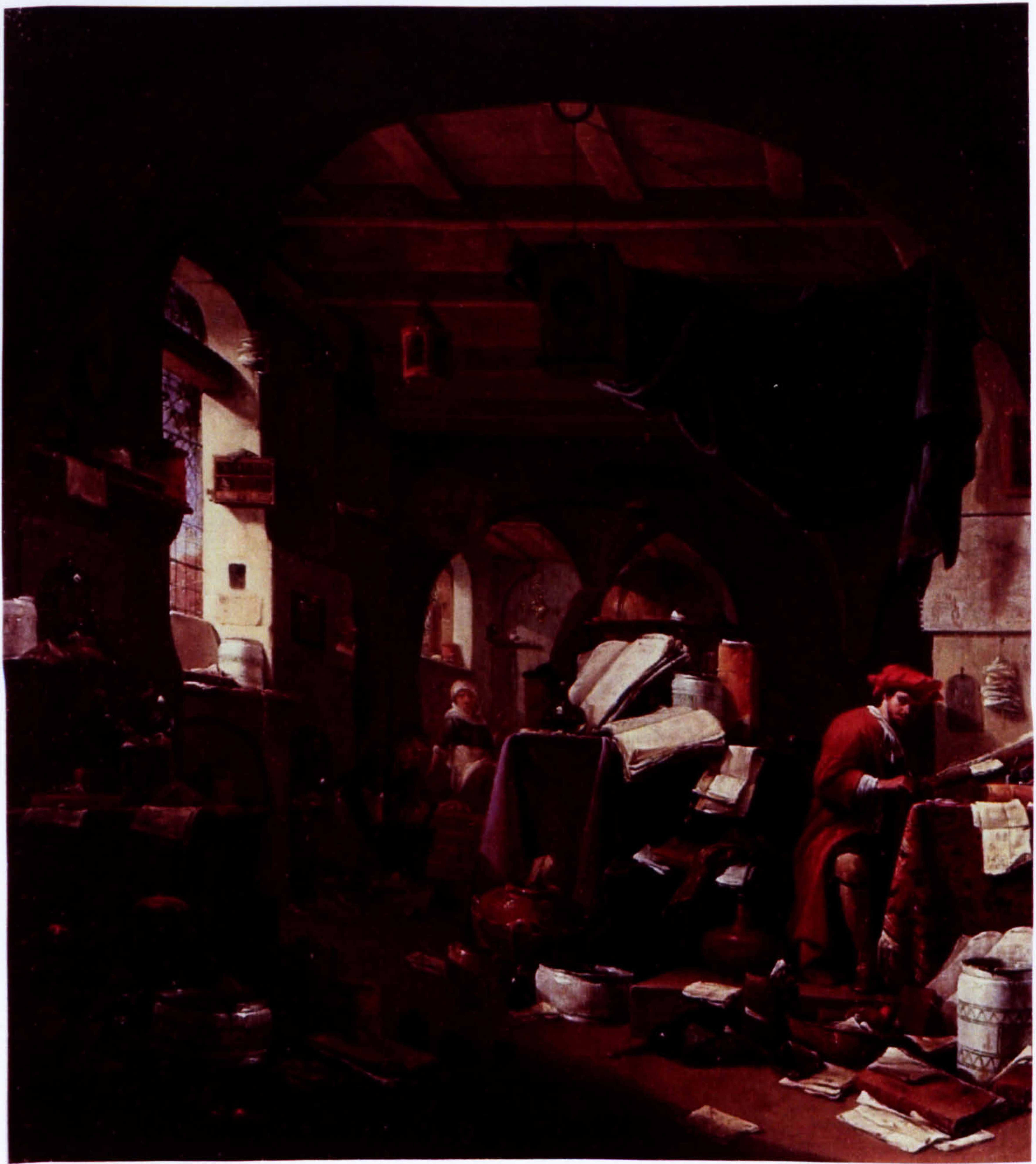


Fig. 63 Thomas Wijck, *An Alchemist in his Study*, date unknown, Wellcome Library, London 45100i. Oil on wood, c.58 cm x 54 cm. Provenance: Robinson Fisher and Harding auction house, London, 11 March 1920, lot 126.



Fig. 64 Thomas Wijck, *Interior with an Alchemist Making a Gesture of Surprise, and a Female Assistant*, date unknown, Wellcome Library, London 45093i. Oil on wood, 43 cm x 38.5 cm. Provenance: Christie's, London, 20 April 1923, lot 157; description in Christie's catalogue "Th. Wyck. The interior of a laboratory, with two figures and numerous utensils. Unframed, on panel -- 17 in by 15 in".



Fig. 65 Thomas Wijck, *The Alchemist and Death*, date unknown, Wisconsin collection of Drs. Alfred and Isabel Bader, Milwaukee. (Russell Corbett, 2004: 162).



Fig. 66 Charles Meer Webb, *The Search for the Alchemical Formula*, 1858, Chemical Heritage Foundation, Philadelphia 00.01.281. Oil on canvas, 20 1/4" x 16 1/2". Provenance: Fisher Scientific; Gift of Mrs. Richard V. Nuttall to C. G. Fisher; Sheldon Hartford Collection; W.C. Jutte Collection, Pittsburgh, Pennsylvania.; Prince Demidoff Collection.