

**HOSPITALITY IN A CISTERCIAN ABBEY:
THE CASE OF KIRKSTALL
IN THE LATER MIDDLE AGES**

RICHARD JAMES ANDREW THOMASON

**TWO VOLUMES
VOLUME TWO**

Submitted in Accordance with the Requirements
for the Degree of Doctor of Philosophy

University of Leeds
Institute for Medieval Studies
September 2015

The candidate confirms that the work submitted is his own work and that appropriate credit has been given where reference has been made to the work of others.

This copy has been supplied on the understanding that it is copyright material and that no quotation from the thesis may be published without proper acknowledgement.

© 2015 The University of Leeds and Richard James Andrew Thomason

PREFATORY NOTE ON FIGURES

All figures captions are prefixed with a numeric designator only (e.g. '2.1'). Figures are arranged according to a) the chapter in which they first occur; and b) their place within the sequence of figures within that chapter. For example, '2.1' indicates the first figure of chapter 2. Where a figure of an earlier chapter has been referred to in a later chapter, the same numeric designator is used.

The figures provided in this volume may be subject to copyright and are not for public dissemination. They are utilised here for educational examination and research purposes only.

Figures are not to scale unless otherwise stated, either on the figure itself (for maps, for example), or in accompanying caption text.

Where the work of others has been drawn on the sources has been provided. For maps (figs. 0.1, 0.2, 2.2), these are the author's compilations utilising Ordnance Survey Open Data, which is made available under an Open Government License, the terms of usage for which may be viewed at the following online locations:

<<https://www.ordnancesurvey.co.uk/opendata/licensing.html>>

<<http://www.nationalarchives.gov.uk/doc/open-government-licence/version/3/>>

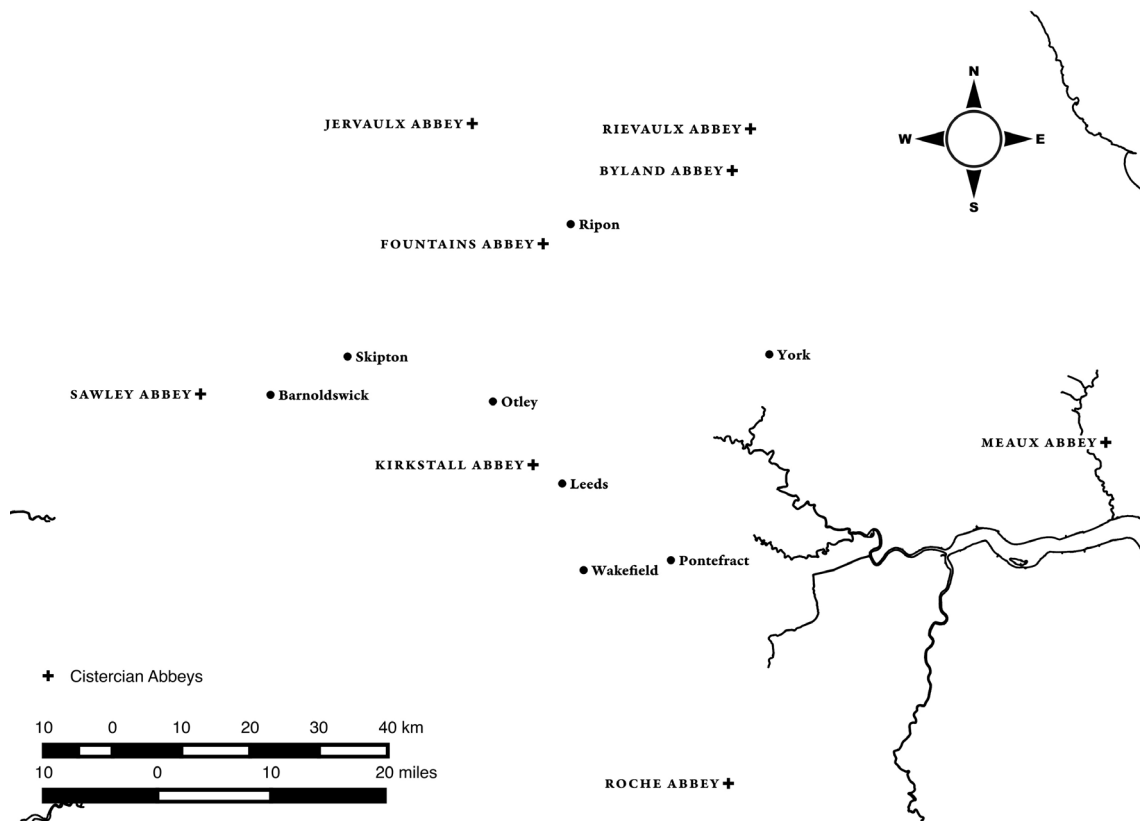
LIST OF FIGURES

0.1: Map of the principal medieval towns and nearby abbeys of Yorkshire.	1
0.2: Map of the principal areas in and around Leeds mentioned in the text.....	1
0.3: Historical groundplan of Kirkstall Abbey after Hope's excavations.....	2
0.4: Detail of 'visiting abbot's lodging'	2
0.5: Detail of groundplan of Kirkstall Abbey's gatehouse.....	3
1.1: Relationship of parties in monastic hospitality according to the <i>Rule of Benedict</i>	3
2.1: Cardigan estate map showing the extent of the precinct of Kirkstall Abbey in 1711.	4
2.2: Map of Cistercian houses near Kirkstall, and principal urban centres.....	5
2.3: Valle Crucis Abbey, Denbighshire, viewed from the southwest, at the position of the former gatehouse.....	5
2.4: Plan of Kirkstall showing direction of travel from gatehouse through inner court.....	6
2.5: Groundplan of Buckfast Abbey guesthouse.....	6
2.6: Buckfast Abbey guesthouse, viewed from southeast.....	7
2.7: Buckfast Abbey guesthouse, viewed from northwest, showing width of original hall.	7
2.8 Inside abbey gift shop at Buckfast Abbey, occupying location of medieval guesthouse, looking east.	8
2.9: West range of Buckfast Abbey, viewed from the northwest.	9
2.10: The abbot's tower, Buckfast.....	9
2.11: Groundplan of Coggeshall Abbey.	10
2.12: Guesthouses of Fountains Abbey.....	10
2.13: Division of Fountains Abbey's buildings according to segregation scheme.	11
2.14: Fountains Abbey's hospitality spaces according to transitional scheme.....	11
2.15: Groundplan of Furness Abbey.....	12

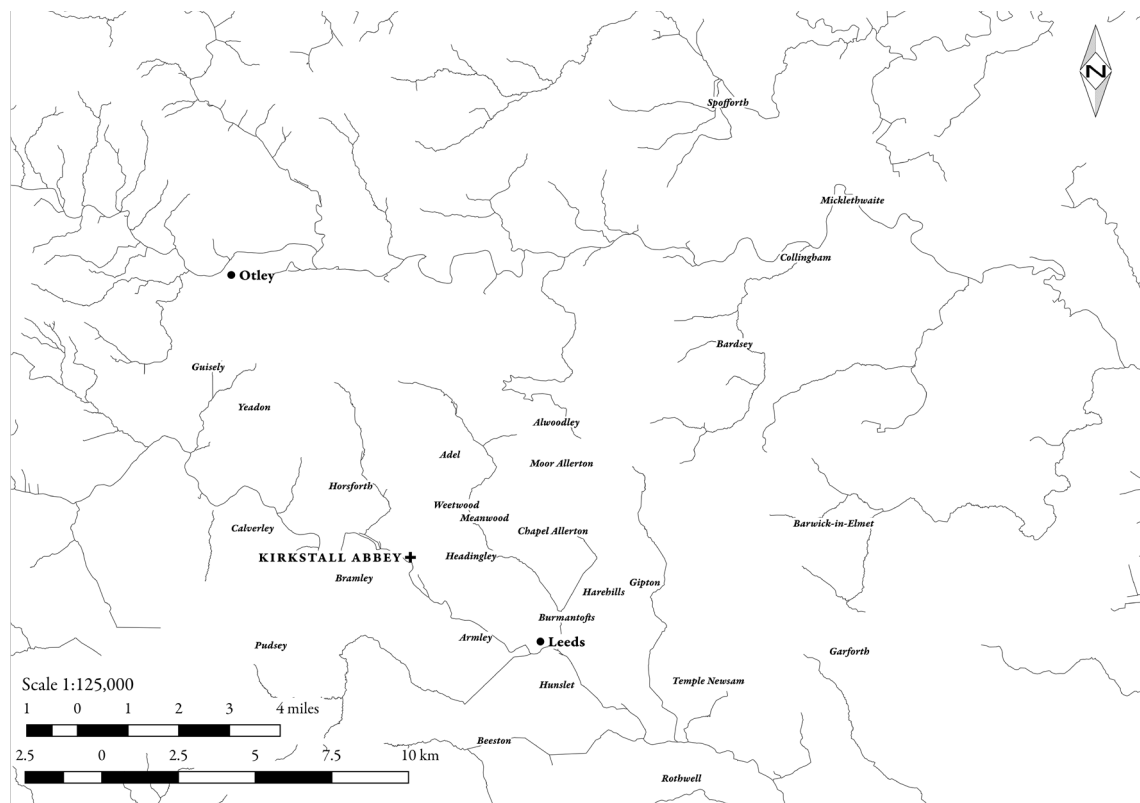
2.16: Plan of gatehouse structures in outer court of Furness Abbey, with post-monastic developments.	13
2.17: Groundplan of Jervaulx Abbey.	14
2.18: Groundplan of Waverley Abbey guesthouse.....	14
2.19: Groundplan of Tintern Abbey.....	15
2.20: Groundplan of Tintern Abbey guesthouse.....	16
2.21: Groundplan of Tintern Abbey guesthouse.....	16
2.22: Groundplan of east of the cloister, Croxden Abbey.	17
2.23: Groundplan of Cleeve Abbey.....	18
2.24: Groundplan of Roche Abbey.....	19
2.25: Groundplan of the western range of Flaxley Abbey.....	20
2.26: Groundplan of Melrose Abbey.....	20
2.27: Groundplan of Buckland Abbey.....	21
2.28: Groundplan of Buckland Abbey.	21
2.29: Drawing of abbot's tower, Buckland Abbey.	22
2.30: Groundplan of Forde Abbey.....	22
2.31: Phased groundplan of Forde Abbey.....	23
2.32: Exterior of Forde Abbey entrance tower and hall.....	23
2.33: Detail of Forde Abbey exterior of entrance tower.....	24
2.34: Groundplan of Cymer Abbey.....	24
2.35: Groundplan of Valle Crucis Abbey.....	25
2.36: The Kirkstall Abbey guesthouse excavations, 1980s.....	26
2.37: Phased plan Kirkstall guesthouse.....	27
2.38: Plan of Kirkstall's water supply systems.....	28
2.39: Artist's impression of the interior of Kirkstall's guesthouse.	29
2.40: Fireplaces in Kirkstall's abbot's lodging.....	29
3.1: Functional categories of the Kirkstall guesthouse objects.....	30

3.2: Analytical categories of the Kirkstall guesthouse objects.....	32
3.3: Dating of some of Kirkstall's dress accessories.....	34
3.4: Lobed strap mount.....	34
3.5: Silver strap end.....	35
3.6: Peasant labourer wearing belt.....	35
3.7: Width in millimetres of belt buckles from Kirkstall's guesthouse.....	36
3.8: Effigy of King John, Worcester Cathedral, c. 1240.....	37
3.9: Possible configuration of buckle and strap mount.....	38
3.10: Arched pendent strap mount or purse hanger.....	38
3.11: Bar suspension mount.	38
3.12: Arched pendent strap mount or purse hanger.....	38
3.13: Detail of St George and sword belt.	39
3.14: Effigy of Sir Humphrey Littlebury, at Holbeach in Lincolnshire, 1360.....	40
3.15: Effigy of Catherine Mortimer, wife of Thomas Beauchamp, Earl of Warwick, at the Church of St Mary, Warwick, 1370.....	40
3.16: Double loop frame buckle with central bar, pin <i>in situ</i>	41
3.17: Detail of feet from Later Hilton knight, Swine, North Humberside.....	41
3.18: Squared buckles on the effigy of the Mirfield knight at Batley, West Yorkshire.....	41
3.19: Buckle Terminology.	42
3.20: Anon. Flemish illustrator, 'The Granting of Privileges to Ghent and Flanders', post-1453.	43
3.21: Oval lipped frame with notch for pin and offset bar.....	43
3.22: Fragment of oval-framed lipped buckle.....	43
3.23: Brass effigy of Sir Roger of Trumpington, Church of St Mary and St Michael, Trumping- ton (Cambridgeshire), 1290–1300.....	44
3.24: Brass effigy of Sir Hugh Hastings, Elsing (Norfolk), 1347.....	45
3.25: Detail of Sir Miles Stapleton, Ingham Priory, Ingham (Norfolk), 1364.....	46

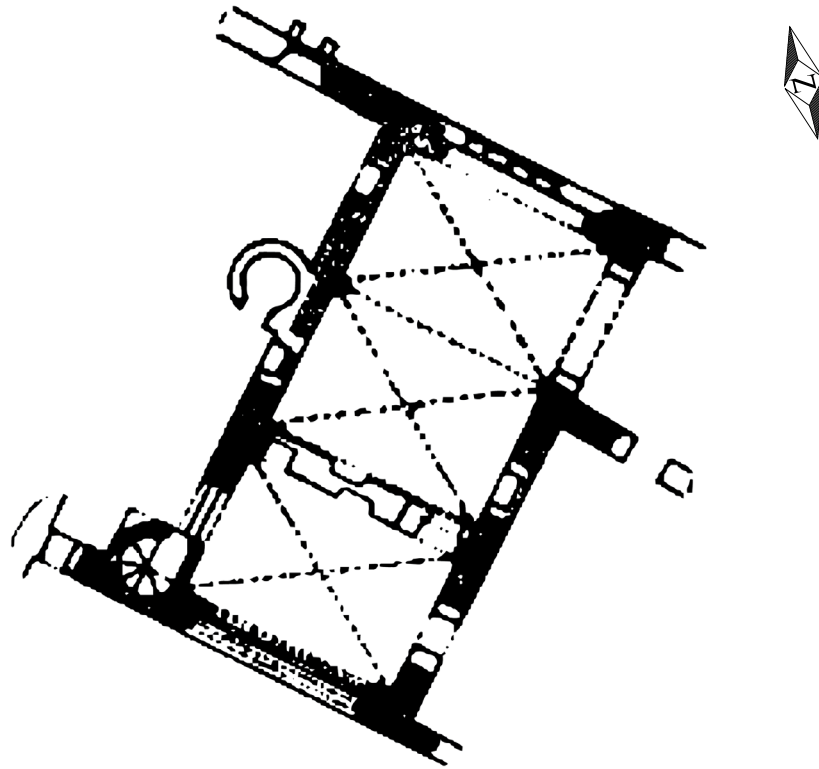
3.26: D-form buckle with narrowed bar.....	46
3.27: Monumental brass of unknown man, Church of St Thomas Becket, Hampsthwaite (Yorkshire), <i>c.</i> 1360–65; with detail of buckle.....	47
3.28: Man in civil dress, St John the Baptist's Church, Shortesbrooke (Berkshire), 1370, with detail of belt buckle and threaded strap.....	48
3.29: Domed sexfoil mount with integral rivet.....	49
3.30: Brass of Sir John D'Aubernon, Chapel of St John the Baptist and St James, Stoke D'Abernon (Surrey), 1327.....	49
3.31: Effigy of Sir Gerard de Insula, Stow Nine Churches (Northamptonshire), 1260 × 70.....	50
3.32: Two bar mounts.....	50
3.33: Oval frame buckle with ornate outside edge, Kirkstall guesthouse.....	51
3.34: Oval frame buckle with ornate outside edge, from Lurk Lane, Beverley.....	51
3.35: Composite strap fastener, Kirkstall guesthouse, 1350–1450.....	51
3.36: Composite strap fastener from Bedern.....	51
3.37: Roger van der Weyden, 'Portrait of Anonymous Young Woman', <i>c.</i> 1460, with detail of belt.....	52
3.38: Number of dress accessories found at Kirkstall Abbey and York.....	52
3.39: Roger van der Weyden, 'Portrait of a Woman with a Winged Bonnet', <i>c.</i> 1435.....	53
3.40: Roger van der Weyden, 'Portrait of a Woman', <i>c.</i> 1460.....	54
3.41: Roger van der Weyden, 'Portrait of a Woman', <i>c.</i> 1460.....	55
4.1: Composition of animal bones found in monastic areas.....	56
4.2: Aging of ox bones from Kirkstall Abbey meat kitchen.....	56
4.3: Aging of sheep bones from Kirkstall Abbey meat kitchen.....	56
4.4: Aging of pig bones from Kirkstall Abbey meat kitchen.....	56
4.5: Composition of animal bones from Kirkstall's guesthouse.....	56
4.6 Relative proportions of animal bones according to species in religious sites of Britain.....	57
4.7 Seal ring.....	58



0.1: Map of the principal medieval towns and nearby abbeys of Yorkshire.
Contains Ordnance Survey data © Crown copyright and database right 2013.

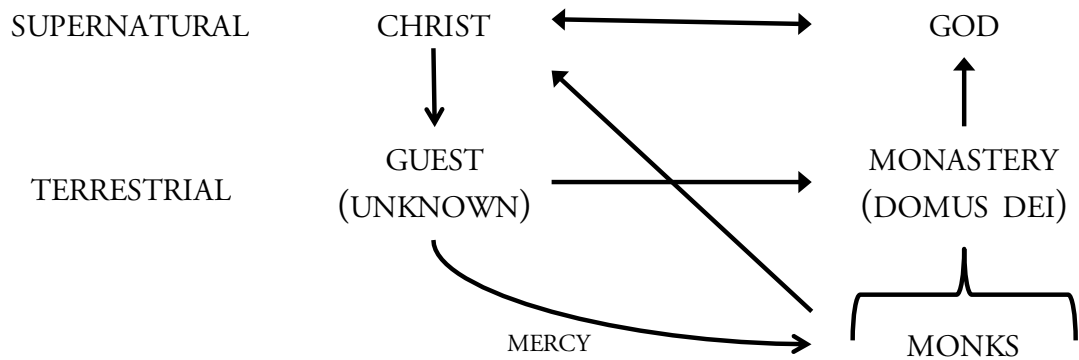


0.2: Map of the principal areas in and around Leeds mentioned in the text.
Contains Ordnance Survey data © Crown copyright and database right 2013.



0.5: Detail of groundplan of Kirkstall Abbey's gatehouse.

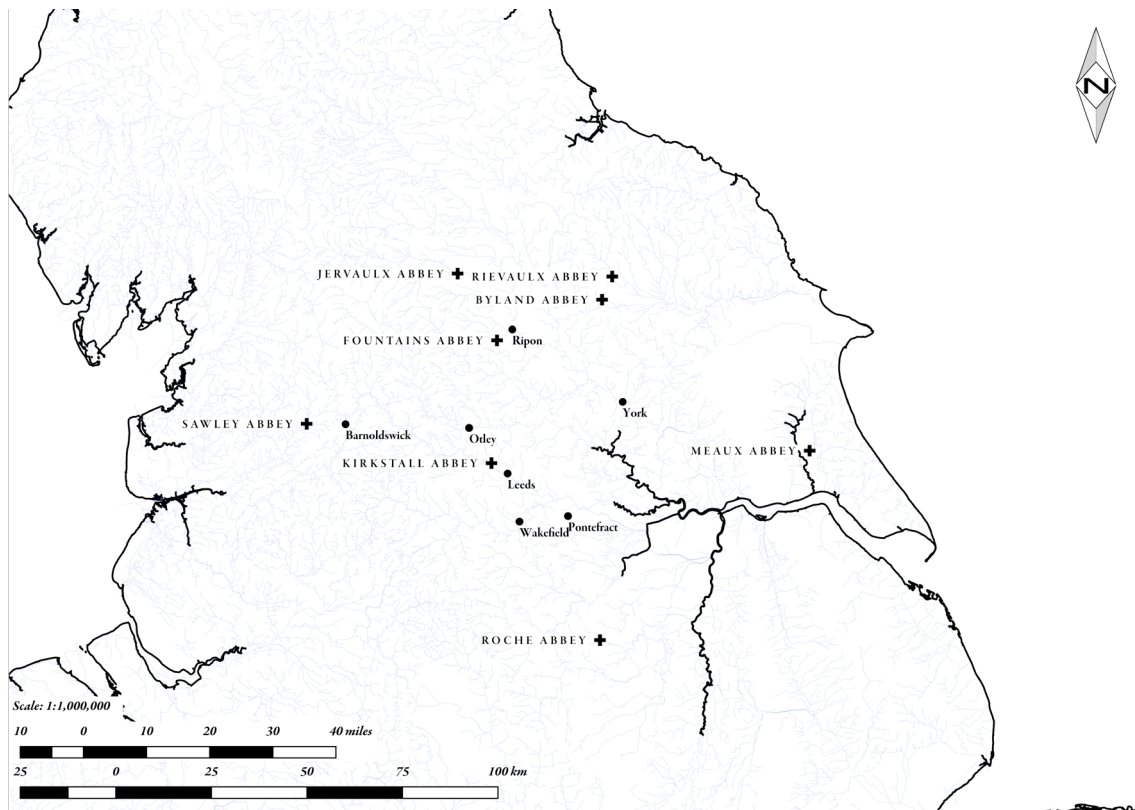
Source: Adapted from *Kirkstall Abbey: Historical Ground Plan* (Leeds: C. F. Kell, 1900).



1.1: Relationship of parties in monastic hospitality according to the *Rule of Benedict*.

This image has been removed by the author of this thesis for copyright reasons.

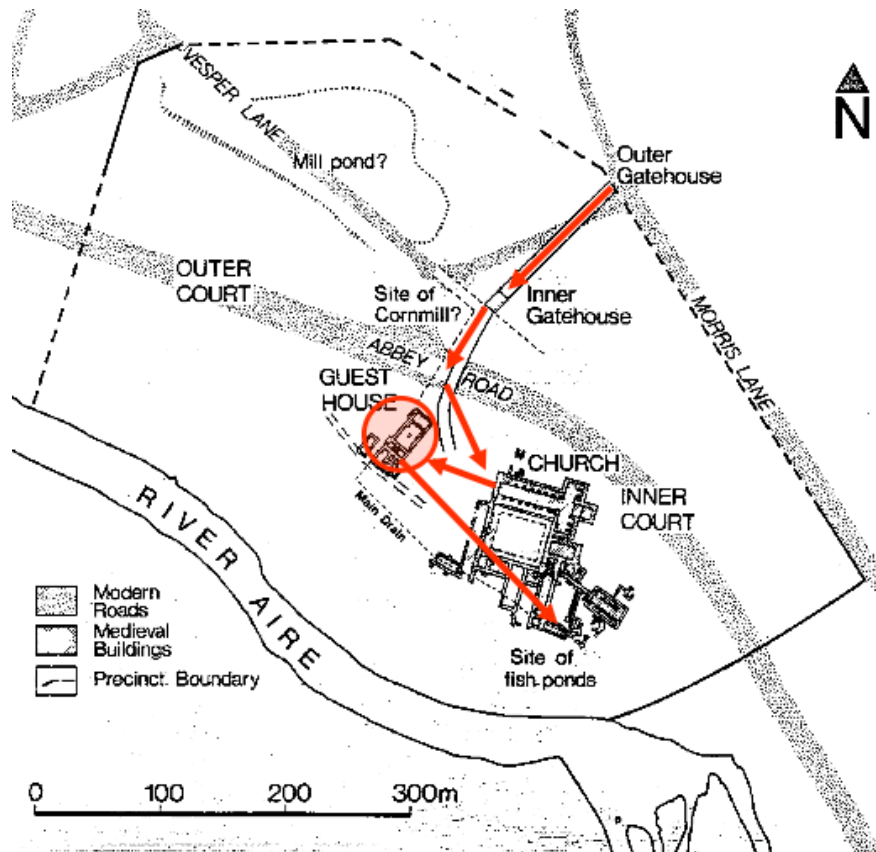
2.1: Cardigan estate map showing the extent of the precinct of Kirkstall Abbey in 1711.
Courtesy, West Yorkshire Archive Service.



2.2: Map of Cistercian houses near Kirkstall, and principal urban centres.
Contains Ordnance Survey data © Crown copyright and database right 2013.



2.3: Valle Crucis Abbey, Denbighshire, viewed from the southwest, at the position of the former gatehouse.
Source: Photographed by Richard Thomason 2013.



2.4: Plan of Kirkstall showing direction of travel from gatehouse through inner court.

Source: Adapted from Stuart Wrathmell, *Kirkstall Abbey: The Guest House – A Guide to the Medieval Buildings and to the Discoveries Made during Recent Excavations*, 2nd edn (Wakefield: West Yorkshire Archaeological Service, 1987).

This image has been removed by the author of this thesis for copyright reasons.

2.5: Groundplan of Buckfast Abbey guesthouse.

Source: Anthony Emery, *Greater Medieval Houses of England and Wales, 1300–1500*, 3 vols (Cambridge: Cambridge University Press, 2006), III, p. 507.



2.6: Buckfast Abbey guesthouse, viewed from southeast.
Source: Photograph by Richard Thomason 2013.



2.7: Buckfast Abbey guesthouse, viewed from northwest, showing width of original hall.
Source: Photograph by Richard Thomason 2013.



2.8 Inside abbey gift shop at Buckfast Abbey, occupying location of the medieval guesthouse, looking east.

Source: Photography by Richard Thomason 2013.



2.9: West range of Buckfast Abbey, viewed from the northwest.

The large mansion is of nineteenth-century date.

Source: Photograph by Richard Thomason 2013.

This image has been removed by the author of this thesis for copyright reasons.

2.10: The abbot's tower, Buckfast.

Source: Robin Clutterbuck, *Buckfast Abbey: A History* (Buckfast: Buckfast Abbey Trustees, 1994), p. 17.

This image has been removed by the author of this thesis for copyright reasons.

2.11: Groundplan of Coggeshall Abbey.

Source: J. S Gardner, 'Coggeshall Abbey and its Early Brickwork', *Journal of the British Archaeological Association*, 3rd ser., 18 (1955), pl. 5 (facing p. 32).

This image has been removed by the author of this thesis for copyright reasons.

2.12: Guesthouses of Fountains Abbey.

Source: Unpublished figure provided by kind permission of West Yorkshire Joint Services.



2.13: Division of Fountains Abbey's buildings according to segregation scheme.

Source: Adapted from David M. Robinson and others, *The Cistercian Abbeys of Britain: Far from the Concourse of Men* (London: Batsford, 1998).



2.14: Fountains Abbey's hospitality spaces according to transitional scheme.

Source: Adapted from David M. Robinson and others, *The Cistercian Abbeys of Britain: Far from the Concourse of Men* (London: Batsford, 1998).

This image has been removed by the author of this thesis for copyright reasons.

2.15: Groundplan of Furness Abbey.

Source: J. C. Dickinson, 'Furness Abbey: An Archaeological Reconsideration', *Transactions of the Cumberland and Westmorland Antiquarian and Archaeological Society*, 67 (1967), 51–80, facing p. 60.)

This image has been removed by the author of this thesis for copyright reasons.

2.16: Plan of gatehouse structures in outer court of Furness Abbey, with post-monastic developments.

Source: J. C. Dickinson, 'Furness Abbey: An Archaeological Reconsideration', *Transactions of the Cumberland and Westmorland Antiquarian and Archaeological Society*, 67 (1967), 51–80, facing p. 73.

This image has been removed by the author of this thesis for copyright reasons.

2.17: Groundplan of Jervaulx Abbey.

Source: Adapted from David M. Robinson and others, *The Cistercian Abbeys of Britain: Far from the Concourse of Men* (London: Batsford, 1998), p. 128.

This image has been removed by the author of this thesis for copyright reasons.

2.18: Groundplan of Waverley Abbey guesthouse.

Source: Unpublished figure provided by kind permission of West Yorkshire Joint Services.

This image has been removed by the author of this thesis for copyright reasons.

2.19: Groundplan of Tintern Abbey.

Source: David M. Robinson, *The Cistercians in Wales: Architecture and Archaeology 1130–1540* (London: Society of Antiquaries of London, 2006). Available online at <<http://www.monasticwales.org/image/329>> [accessed 5 March 2016].

This image has been removed by the author of this thesis for copyright reasons.

2.20: Groundplan of Tintern Abbey guesthouse.

Source: Paul Courtney, 'Excavations in the Outer Precinct of Tintern Abbey', *Medieval Archaeology*, 33 (1989), 99–143 (p. 105, fig. 5).

This image has been removed by the author of this thesis for copyright reasons.

2.21: Groundplan of Tintern Abbey guesthouse.

Source: Unpublished figure provided by kind permission of West Yorkshire Joint Services.

This image has been removed by the author of this thesis for copyright reasons.

2.22: Groundplan of east of the cloister, Croxden Abbey.

Building 1 is labelled here as 'Infirmery Hall'; Building 2 is labelled as 'Abbot's Lodging'.

Source: Jackie Hall, 'Croxden Abbey: Buildings and Community' (unpublished PhD thesis, University of York, 2003), 2vols, II, fig. 67.

This image has been removed by the author of this thesis for copyright reasons.

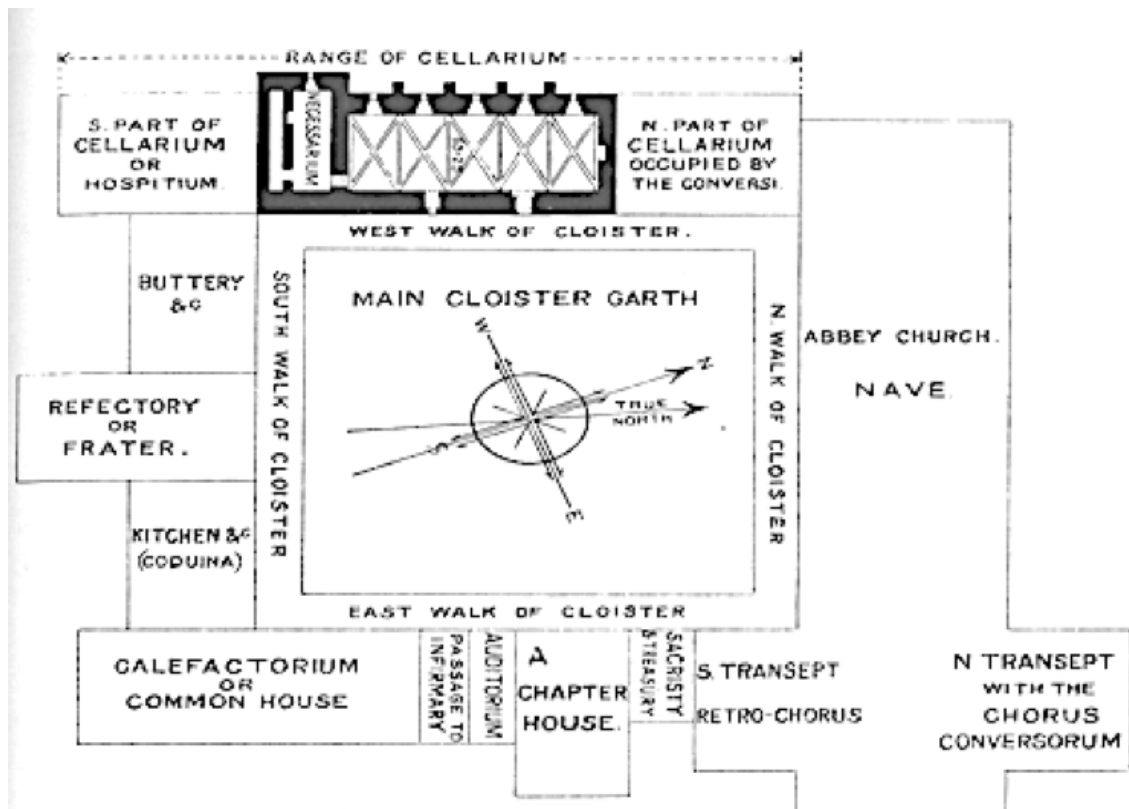
2.23: Groundplan of Cleeve Abbey.

Source: Richard W. Parker, Tony Ives and John Allan, 'Excavation and Building Study at Cleeve Abbey, 1995–2003', *Somerset Archaeology and Natural History*, 150 (2007), 73–167 (p. 74), fig. 1.

This image has been removed by the author of this thesis for copyright reasons.

2.24: Groundplan of Roche Abbey.

Source: Published online by English Heritage at <<http://www.english-heritage.org.uk/content/visit/places-to-visit/history-research-plans/roche-abbey-phased-plan>> [accessed 5 March 2016]



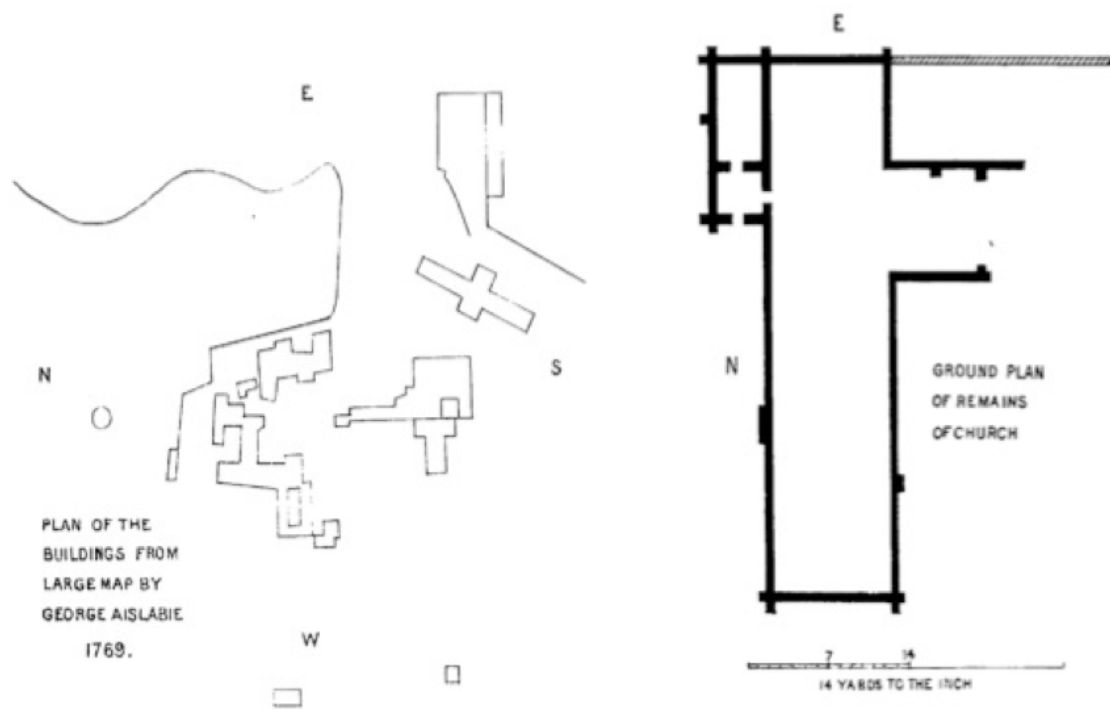
2.25: Groundplan of the western range of Flaxley Abbey.

Source: J. Henry Middleton, 'Flaxley Abbey: The Existing Remains', *Transactions of the Bristol and Gloucestershire Archaeological Society*, 6 (1881–1882), pl. 9 (facing p. 280).

This image has been removed by the author of this thesis for copyright reasons.

2.26: Groundplan of Melrose Abbey.

Source: Elspeth Mackay, *Investigating Melrose Abbey: Information for Teachers* (online publication: Historic Scotland, n.d.), p. 6, available online at <<http://www.historic-scotland.gov.uk/investigating-melrose-abbey.pdf>> [accessed 7 March 2016]



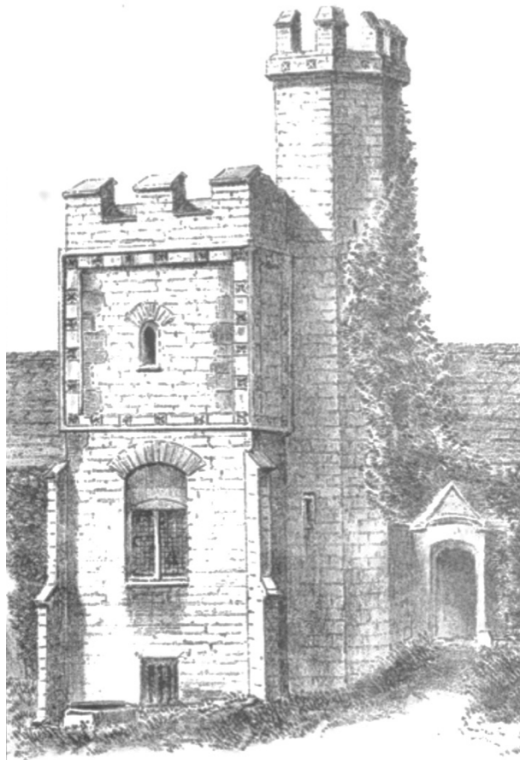
2.27: Groundplan of Buckland Abbey.

Source: J. Brooking Rowe, *Contributions to a History of the Cistercian Houses of Devon* (Plymouth: W. Brendon, 1878), plate 1 (facing p. 40).

This image has been removed by the author of this thesis for copyright reasons.

2.28: Groundplan of Buckland Abbey.

Source: Online ground plan published by Historic England available online at <<http://list.historicengland.org.uk/resultsingle.aspx?uid=1163369>> [accessed 16 September 2015].



2.29: Drawing of abbot's tower, Buckland Abbey.

Source: J. Brooking Rowe, *Contributions to a History of the Cistercian Houses of Devon* (Plymouth: W. Brendon, 1878), plate 6.

This image has been removed by the author of this thesis for copyright reasons.

2.30: Groundplan of Forde Abbey.

Source: *Royal Commission on the Historical Monuments of England: Dorset*, 5 vols (London: H.M.S.O, 1952–57), I, facing p. 241.

This image has been removed by the author of this thesis for copyright reasons.

2.31: Phased groundplan of Forde Abbey.

Source: Anthony Emery, *Greater Medieval Houses of England and Wales, 1300–1500*, 3 vols (Cambridge: Cambridge University Press, 2006), III, p. 563, fig. 137



2.32: Exterior of Forde Abbey entrance tower and hall.

Source: Photograph by Richard Thomason 2013.



2.33: Detail of of Forde Abbey exterior of entrance tower.

Source: Photograph by Richard Thomason 2013.

This image has been removed by the author of this thesis for copyright reasons.

2.34: Groundplan of Cymer Abbey.

Source: David M. Robinson, *The Cistercians in Wales: Architecture and Archaeology 1130–1540* (London: Society of Antiquaries of London, 2006). Available online at <<http://www.monasticwales.org/image/319>> [accessed 5 March 2016].

This image has been removed by the author of this thesis for copyright reasons.

2.35: Groundplan of Valle Crucis Abbey.

Source: David M. Robinson, *The Cistercians in Wales: Architecture and Archaeology 1130–1540* (London: Society of Antiquaries of London, 2006). Available online at <<http://www.monasticwales.org/image/317>> [accessed 5 March 2016].

This image has been removed by the author of this thesis for copyright reasons.

2.36: The Kirkstall Abbey guesthouse excavations, 1980s.

Source: Photography provided by kind permission of West Yorkshire Joint Services.

This image has been removed by the author of this thesis for copyright reasons.

2.37: Phased plan Kirkstall guesthouse.

Source: Unpublished figure provided by kind permission of West Yorkshire Joint Services.

This image has been removed by the author of this thesis for copyright reasons.

2.38: Plan of Kirkstall's water supply systems.

Source: Unpublished figure provided by kind permission of West Yorkshire Joint Services.

This image has been removed by the author of this thesis for copyright reasons.

2.39: Artist's impression of the interior of Kirkstall's guesthouse.

Source: Adapted from Stuart Wrathmell, *Kirkstall Abbey: The Guest House – A Guide to the Medieval Buildings and to the Discoveries Made during Recent Excavations*, 2nd edn (Wakefield: West Yorkshire Archaeological Service, 1987), p. 21.



2.40: Fireplaces in Kirkstall's abbot's lodging.

Source: William Henry St John Hope and John Bilson, *Architectural Description of Kirkstall Abbey* (Leeds: Thoresby Society, 1907), fig. 35.

NO.	CATEGORY	EXAMPLE OBJECTS	MATERIAL TYPES
1.	<i>Building Materials</i>	Window cames Window glass Roofing (e.g. flashing) Architectural fragments	Lead Glass Lead Stone
2.	<i>Building Fasteners and Fittings</i>	Door hinges Decorative estoilles Lead piping (water management) Nails Padlock Rivet Washers	Iron Lead Lead Iron Copper alloy Copper alloy Copper alloy
3.	<i>Household</i>	Handles (of various objects/vessels) Thimbles Tongs Vessel fragments (e.g. cauldron leg)	Copper alloy/lead Copper alloy Iron Copper alloy
4.	<i>Crafts and Industry</i>	Chisel Fragments Punch	Iron Lead/copper alloy Iron
5.	<i>Multipurpose Blades and Sharpeners</i>	Knives Whetstone	Iron Stone
6.	<i>Commerce</i>	Numismatic finds (e.g. coins and jettons)	Silver/lead
7.	<i>Measurement</i>	Weights	Lead
8.	<i>Communications</i>	Book bindings Seal matrices Seal rings Styli Writing leads	Copper alloy Copper alloy Copper alloy Copper alloy Lead
9.	<i>Pastimes</i>	Die Tuning peg Gaming counters	Bone Bone Stone
10.	<i>Transport and Horse-Related</i>	Harness pendants Horseshoes	Copper alloy Iron
11.	<i>Subsistence and Agriculture</i>	Animal Bones Fishing weight Millstone Quern	Bone Lead Stone Stone
12.	<i>Hunting and Weaponry</i>	Arrow heads Dagger chape	Iron Copper alloy

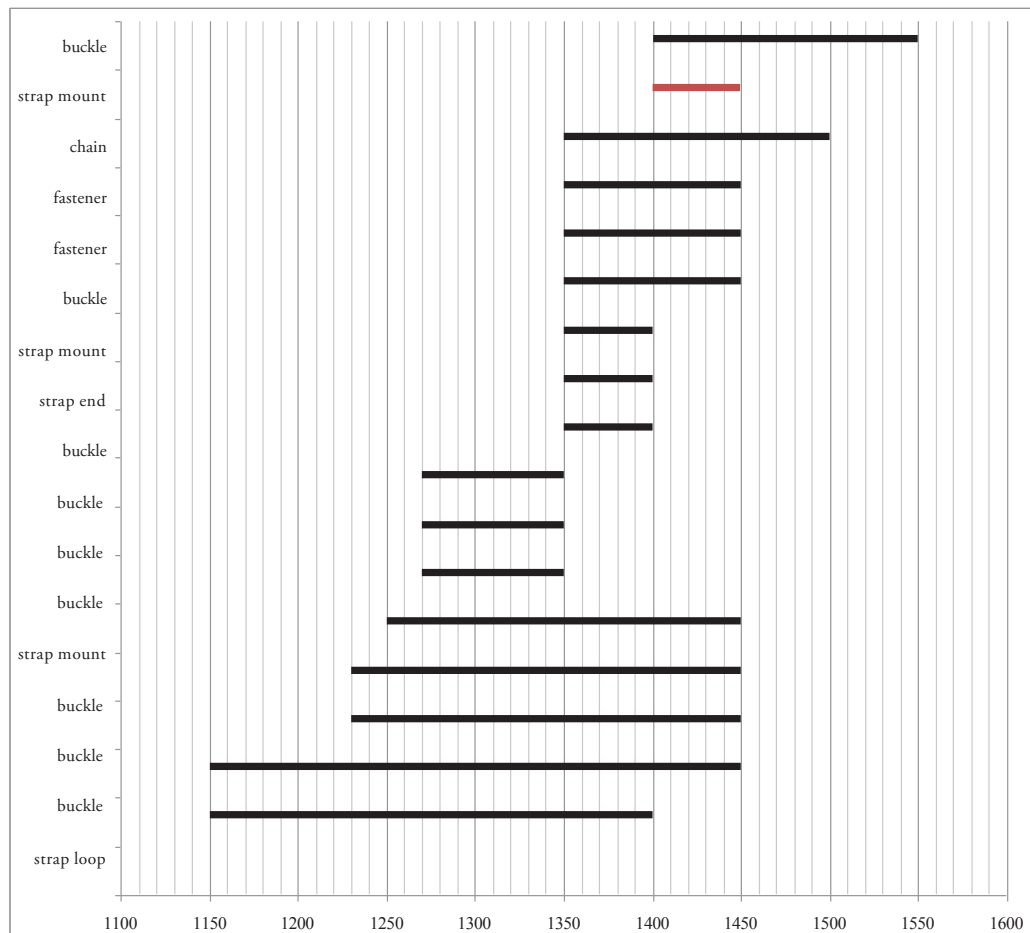
3.1: Functional categories of the Kirkstall guesthouse objects.
(Continued on next page.)

NO.	CATEGORY	EXAMPLE OBJECTS	MATERIAL TYPES
13.	<i>Personal Adornment and Dress</i>	Belt buckles Belt loops Brooches Buckle pins Buttons Clips Lace tags Pendants Rings Strap Fittings Studs	Copper alloy/lead Copper alloy Copper alloy (with silver) Copper alloy Copper alloy Copper alloy (modern?) Copper alloy Copper alloy Copper alloy/lead Copper alloy Copper alloy/lead
14.	<i>Toilet, Surgical, and Pharmaceutical</i>	Toilet implement Cased mirror	Copper alloy Copper alloy
15.	<i>Religious and Political Beliefs</i>	Monumental/ gravestone letter Pilgrim badge holder Rosary Bead	Copper alloy Lead Jet
16.	<i>Prehistoric Flint and Stone</i>	n/a	n/a
17.	<i>Wide-Ranging Uses</i>	Rings and loops	Copper alloy/lead/iron
18.	<i>Unknown / Uncertain</i>	Various sheet and strip fragments	Copper alloy/lead/iron
19.	<i>Natural Objects / Ecofacts</i>	Tooth	Tooth

ANALYTICAL CATEGORY	FUNCTIONAL CATEGORY	EXAMPLES OF OBJECTS * indicates potential for crossover between categories
Material Environment	<i>Building Materials</i>	Window comes Window glass Roofing (e.g. flashing) Architectural fragments
	<i>Building Fasteners and Fittings</i>	Door hinges Decorative estoilles Lead piping (water management) Nails Padlock Rivet Washers
	<i>Religious and Political Beliefs</i>	Monumental/ gravestone letter
Social and Gender Identity	<i>Transport and Horse-Related</i>	Harness pendants Horseshoes
	<i>Hunting and Weaponry</i>	Arrow heads Dagger chape
	<i>Personal Adornment and Dress</i>	Belt buckles Belt loops * Brooches Buckle pins Buttons Clips Lace tags Pendants * Rings Strap Fittings Studs
	<i>Toilet, Surgical, and Pharmaceutical</i>	* Toilet implement * Cased mirror
	<i>Religious and Political Beliefs</i>	Monumental/ gravestone letter Pilgrim badge holder Rosary Bead
Activities and Behaviour	<i>Household</i>	Handles (of various objects/vessels) Thimbles Tongs Vessel fragments (e.g. cauldron leg)

3.2: Analytical categories of the Kirkstall guesthouse objects.
(Continued on next page.)

ANALYTICAL CATEGORY	FUNCTIONAL CATEGORY	EXAMPLES OF OBJECTS * indicates potential for crossover between categories
	<i>Crafts and Industry</i>	Chisel Fragments Punch
	<i>Multipurpose Blades and Sharpeners</i>	Knives Whetstone
	<i>Commerce</i>	* Numismatic finds (e.g. coins and jettons)
	<i>Measurement</i>	Weights
	<i>Communications</i>	* Book bindings * Seal matrices * Seal rings Styli Writing leads
	<i>Pastimes</i>	Die * Tuning peg Gaming counters
	<i>Transport and Horse-Related</i>	* Harness pendants Horseshoes
	<i>Subsistence and Agriculture</i>	Animal Bones Fishing weight Millstone Quern
	<i>Hunting and Weaponry</i>	Arrow heads Dagger chape
	<i>Toilet, Surgical, and Pharmaceutical</i>	* Toilet implement * Cased mirror

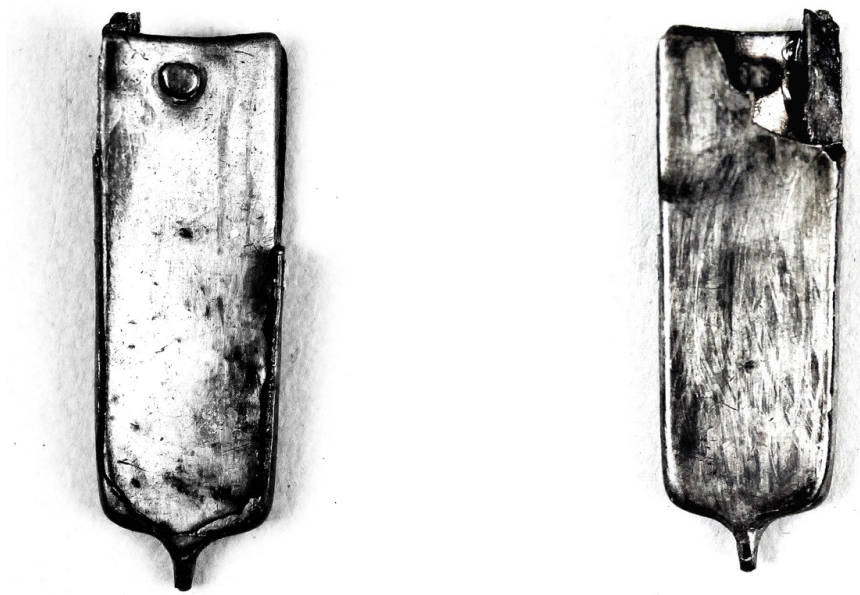


3.3: Dating of some of Kirkstall's dress accessories.

A red line indicates that the date-range is poorly attested with reference to stratified parallels, or difficulty in dating due to lack of well-defined diagnostic features.



3.4: Lobed strap mount.
SF 2776; LEEDM.D.2012.0035.001.045.

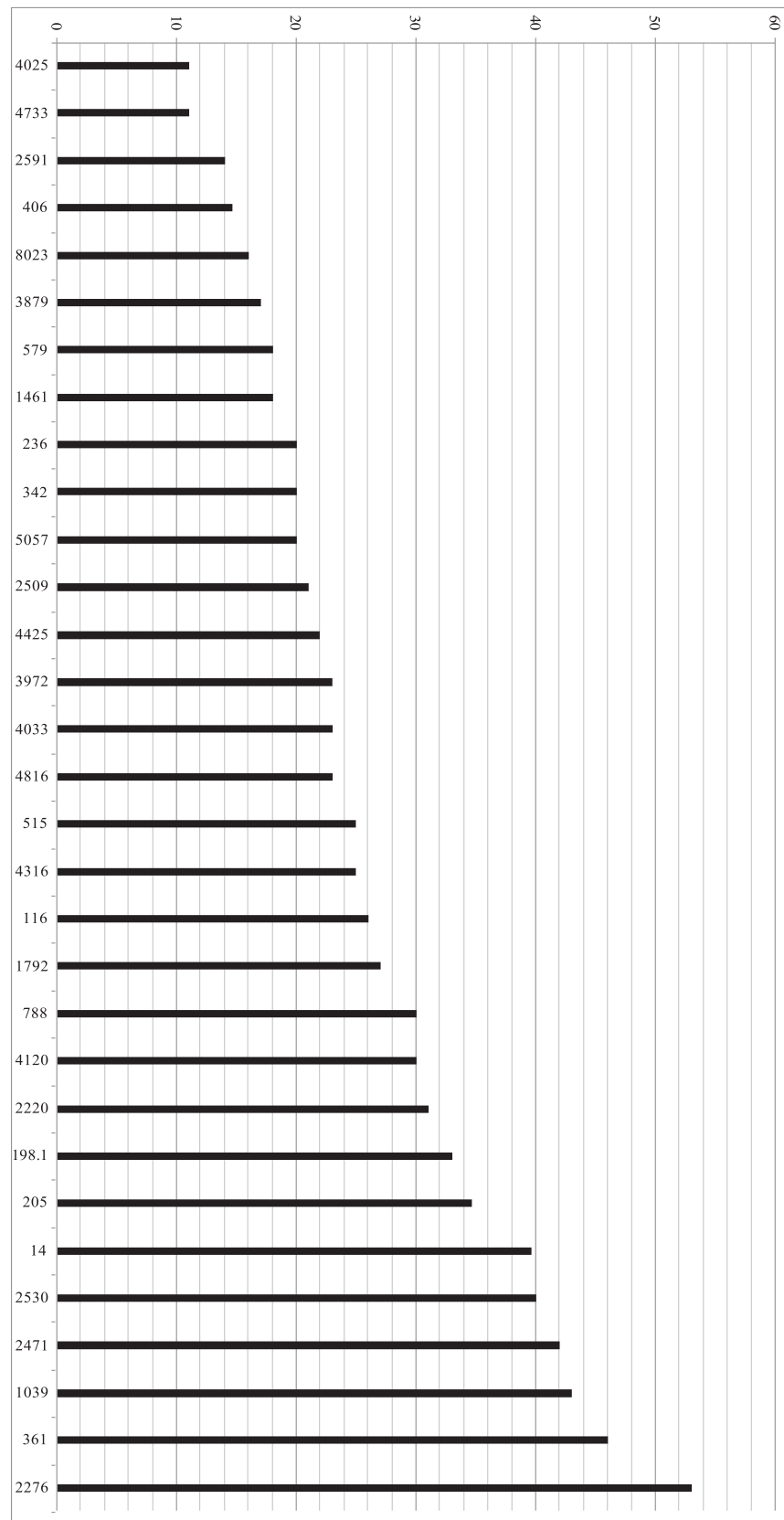


3.5: Silver strap end.
SF 7037; LEEDM.D.2012.0035.001.042.



3.6: Peasant labourer wearing belt.
Luttrell Psalter, BL Add. MS 42130, p. 20.

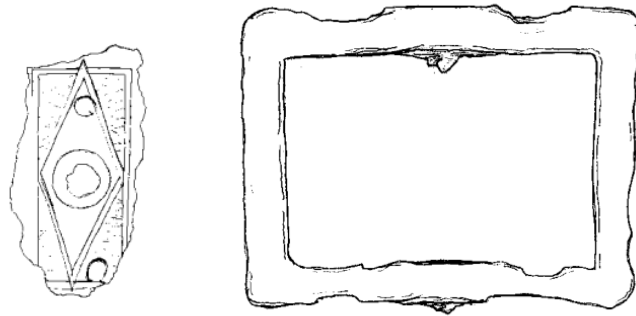
3.7: Width in millimetres of belt buckles from Kirkstall's guesthouse.





3.8: Effigy of King John, Worcester Cathedral, c. 1240.

Source: Frederick Herbert Crossley, *English Church Monuments A.D. 1150–1550: An Introduction to the Study of Tombs and Effigies of the Mediaeval Period* (London: B.T. Batsford, 1921), p. 225.



3.9: Possible configuration of buckle and strap mount
Using buckle SF W2471 (LEEDM.D.2012.0035.001.220) and mount SF 2566 (LEEDM.D.2012.0035.001.367); not to scale. Source: Drawn by Richard Thomason 2014.



3.10: Arched pendent strap mount or purse hanger.
SF 79:491; LEEDM.D.2012.0035.001.408



3.11: Bar suspension mount.
SF 1811; LEEDM.D.2012.0035.001.310.

This image has been removed by the author of this thesis for copyright reasons.

3.12: Arched pendent strap mount or purse hanger.
Source: Geoff Egan and Frances Pritchard, *Dress Accessories, c. 1150–c. 1450, Medieval Finds from Excavations in London*, 3 (London: H.M.S.O., 1991), p. 223, fig. 140, no. 1198).



3.13: Detail of St George and sword belt.
Portrait of Margaret of Denmark, Queen of Scotland, from the Trinity Altarpiece, by Hugo van der Goes, *c.* 1478–79. Currently held at the Scottish National Gallery.



3.14: Effigy of Sir Humphrey Littlebury, at Holbeach in Lincolnshire, 1360.
Frederick Herbert Crossley, *English Church Monuments A.D. 1150–1550: An Introduction to the Study of Tombs and Effigies of the Mediaeval Period* (London: B.T. Batsford, 1921), p. 15.



3.15: Effigy of Catherine Mortimer, wife of Thomas Beauchamp, Earl of Warwick, at Church of St Mary, Warwick, 1370.
Source: Frederick Herbert Crossley, *English Church Monuments A.D. 1150–1550: An Introduction to the Study of Tombs and Effigies of the Mediaeval Period* (London: B.T. Batsford, 1921), p. 15.

3.16: Double loop frame buckle with central bar, pin *in situ*.
SF 79: 236;
LEEDM.D.2012.0035.001.388).



3.17: Detail of feet from Later Hilton knight, Swine, North Humberside.
Source: Pauline E. Routh, *Medieval Effigial Alabaster Tombs in Yorkshire*
(Ipswich: Boydell Press, 1976), p. 114, fig. 70.



3.18: Squared buckles on the effigy of the Mirfield knight at Batley, West Yorkshire.
Source: Pauline E. Routh, *Medieval Effigial Alabaster Tombs in Yorkshire*
(Ipswich: Boydell, 1976), p. 22, fig. 7.

This image has been removed by the author of this thesis for copyright reasons.

3.19: Buckle Terminology.

Source: Geoff Egan and Frances Pritchard, *Dress Accessories, c. 1150–c. 1450*, Medieval Finds from Excavations in London, 3 (London: H.M.S.O., 1991).

This image has been removed by the author of this thesis for copyright reasons.

3.20: Anon. Flemish illustrator, 'The Granting of Privileges to Ghent and Flanders', post-1453.
Source: Margaret Scott, *A Visual History of Costume: The Fourteenth and Fifteenth Centuries*
(London: '. Batsford, 1986), p. 90, plate 90.



3.21: Oval lipped frame with notch for pin and offset bar.
Small find number unknown;
LEEDM.D.2012.0035.001.044).



3.22: Fragment of oval-framed lipped buckle.
79:198; LEEDM.D.2012.0035.001.435).

This image has been removed by the author of this thesis for copyright reasons.

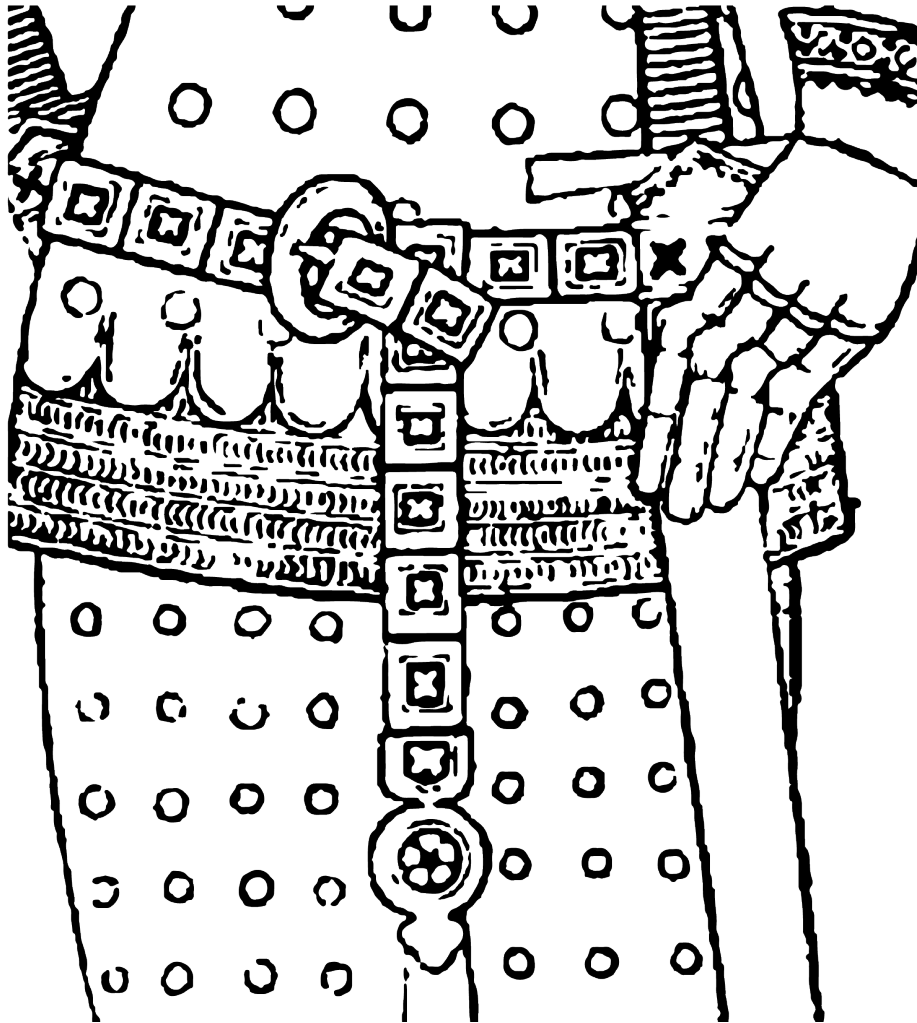
3.23: Brass effigy of Sir Roger of Trumpington, Church of St Mary and St Michael, Trumpington (Cambridgeshire), 1290–1300.

Source: Lawrence Stone, *Sculpture in Britain: The Middle Ages* (Harmondsworth, Middlesex: Penguin Books, 1955), p. 137, fig. 1b.



3.24: Brass effigy of Sir Hugh Hastings, Elsing (Norfolk), 1347.

Source: Frederick Herbert Crossley, *English Church Monuments A.D. 1150–1550: An Introduction to the Study of Tombs and Effigies of the Mediaeval Period* (London: B.T. Batsford, 1921), Crossley, *English Church Monuments*, p. 241.



3.25: Detail of Sir Miles Stapleton, Ingham Priory, Ingham (Norfolk), 1364.
 Source: Source: Frederick Herbert Crossley, *English Church Monuments A.D.
 1150–1550: An Introduction to the Study of Tombs and Effigies of the Mediaeval Pe-
 riod* (London: B.T. Batsford, 1921), Crossley, *English Church Monuments*, p. 243.

3.26: D-form buckle with narrowed bar.
 SF 5057;
 LEEDM.D.2012.0035.001.293).



This image has been removed by the author of this thesis for copyright reasons.

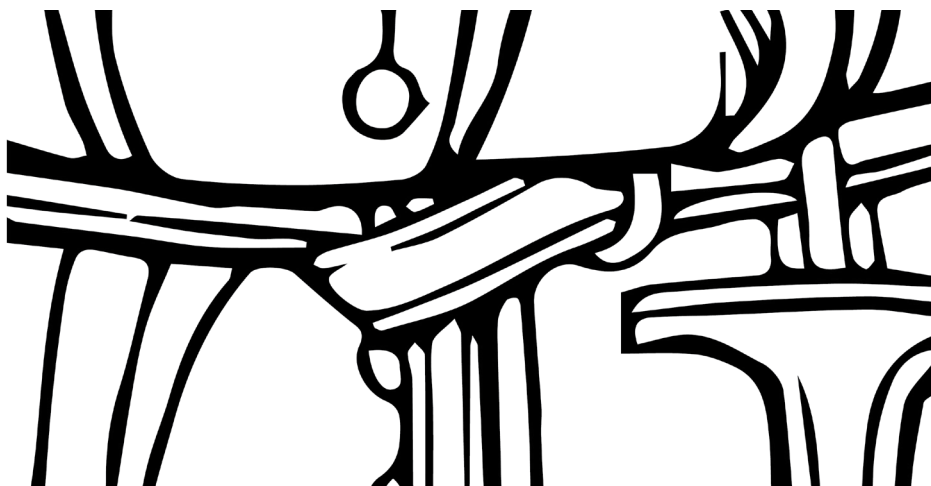
3.27: Monumental brass of unknown man, Church of St Thomas Becket, Hampsthwaite (Yorkshire), c. 1360–65; with detail of buckle.

Margaret Scott, *A Visual History of Costume: The Fourteenth and Fifteenth Centuries* (London: Batsford, 1986), p. 37, fig. 24).



3.28: Man in civil dress, St John the Baptist's Church, Shottesbrooke (Berkshire), 1370, with detail of belt buckle and threaded strap.

Source: Frederick Herbert Crossley, *English Church Monuments A.D. 1150–1550: An Introduction to the Study of Tombs and Effigies of the Mediaeval Period* (London: B.T. Batsford, 1921), Crossley, *English Church Monuments*, p. 232.





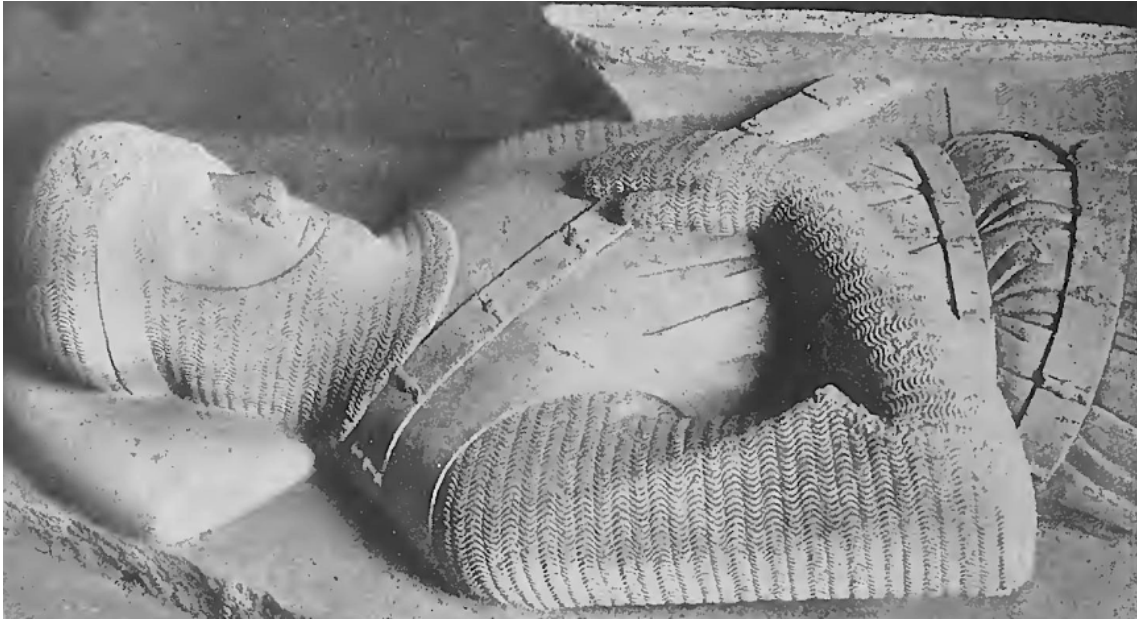
3.29: Domed sexfoil mount with integral rivet.
SF 1699; LEEDM.D.2012.0035.001.046.



3.30: Brass of Sir John D'Auberon, Chapel of St John the Baptish and St James, Stoke D'Abernon (Surrey), 1327.

Source: Frederick Herbert Crossley, *English Church Monuments A.D. 1150–1550: An Introduction to the Study of Tombs and Effigies of the Mediaeval Period* (London: B.T. Batsford, 1921), p. 239.





3.31: Effigy of Sir Gerard de Insula, Stow Nine Churches (Northamptonshire), 1260 × 70.
Source: Frederick Herbert Crossley, *English Church Monuments A.D. 1150–1550: An Introduction to the Study of Tombs and Effigies of the Mediaeval Period* (London: B.T. Batsford, 1921), p. 239.



3.32: Two bar mounts.

Top: bar mount with central perforated lobe and slightly expanded and perforated terminals, with bands of engraved transverse lines decorating either side of central lobe.

SF 1422; LEEDM.D.2012.0035.001.225.

Bottom: possible bar mount with central lobe, with terminals broken off.

SF 4732; LEEDM.D.2012.0035.001.311).



3.33: Oval frame buckle with ornate outside edge, Kirkstall guesthouse.
SF 8023; LEEDM.D.2012.0035.001.068.

This image has been removed
by the author of this thesis
for copyright reasons.

3.34: Oval frame buckle with ornate outside edge, from Lurk Lane, Beverley.
Source: Alison Goodall, 'The Copper Alloy and Gold', in *Excavations at Lurk Lane Beverley, 1979–1982*, ed. by Peter Armstrong, D. H. Evans, and David Tomlinson, *Sheffield Excavation Reports, 1* (Sheffield: Humberside Archaeology Unit, 1991), pp. 148–54 (p. 150, fig. 114, no. 590).



3.35: Composite strap fastener, Kirkstall guesthouse, 1350–1450.
SF 1797; LEEDM.D.2012.0035.001.218.

This image has been removed
by the author of this thesis
for copyright reasons.

3.36: Composite strap fastener from Bedern.
Source: Patrick Ottaway and Nicola Rogers, *Craft, Industry and Everyday Life: Finds from Medieval York*, *The Archaeology of York, 17* (York: Council for British Archaeology, 2002), p. 2903, fig. 1477, no. 14389.

This image has been removed by the author of this thesis for copyright reasons.

3.37: Roger van der Weyden, ‘Portrait of Anonymous Young Woman’, c. 1460, with detail of belt.
Source: Margaret Scott, *A Visual History of Costume: The Fourteenth and Fifteenth Centuries* (London: . Batsford, 1986), p. 94, fig. 96.

SITE	KIRKSTALL (CLOISTER)	KIRKSTALL (GUESTHOUSE)	COPPERGATE, YORK	BEDERN, YORK	FISHERGATE, YORK
No. of dress accessories	15	302	14	144	22

3.38: Number of dress accessories found at Kirkstall Abbey and York.



3.39: Roger van der Weyden, 'Portrait of a Woman with a Winged Bonnet', c. 1435.
Now held at Gemäldegalerie, Staatliche Museen, Berlin.



3.40: Roger van der Weyden, 'Portrait of a Woman', c. 1460.
Now held at National Gallery of Art, Washington, D.C..



3.41: Roger van der Weyden, 'Portrait of a Woman', c. 1460.
Now held at National Gallery, London.

MONASTIC AREAS	OX	SHEEP	PIG	DEER
% NO. / BONES	90	5	3	2
MEAT KITCHEN ANNEXE	81%	12%	5%	2%
WORKSHOP RANGE	75%	14%	7%	4%

4.1: Composition of animal bones found in monastic areas.

Source: Michael L. Ryder, 'The Animal Bones', in *Kirkstall Abbey Excavations, 1955–59*, Publications of the Thoresby Society, 48 (Leeds: Thoresby Society, 1961), pp. 41–53 (p. 70).

OX	< 2 YRS	> 2 YRS	> 5 YRS	C. 10 YRS
Mandibles	1	23	34	5
Molars	-	122	229	87
Incisors	-	15	8	14
Total	1	160	271	106
%	0.19	29.7	50.4	19.7

4.2: Aging of ox bones from Kirkstall Abbey meat kitchen.

Source: Michael L. Ryder, 'The Animal Bones', in *Kirkstall Abbey Excavations, 1955–59*, Publications of the Thoresby Society, 48 (Leeds: Thoresby Society, 1961), pp. 41–53 (p. 71).

SHEEP	< 2 YRS	> 2 YRS	> 5 YRS	C. 10 YRS
MANDIBLES	2	21	-	-
MOLARS	-	11 (over 2 yrs, but n. v. worn)	-	-
TOTAL	2	32	-	-
%	5.9	94.1	-	-

4.3: Aging of sheep bones from Kirkstall Abbey meat kitchen.

Source: Michael L. Ryder, 'The Animal Bones', in *Kirkstall Abbey Excavations, 1955–59*, Publications of the Thoresby Society, 48 (Leeds: Thoresby Society, 1961), pp. 41–53 (p. 71).

PIG	C. 1 YR (5 MOLARS)	C. 1.5 YRS (7TH MOLAR ERUPTING)	C. 2 YRS (7 MOLARS)	> 2 YRS (7 MOLARS, VERY WORN)
MANDIBLES	1	10	3	1
%	6.7	66.7	20.0	6.7

4.4: Aging of pig bones from Kirkstall Abbey meat kitchen.

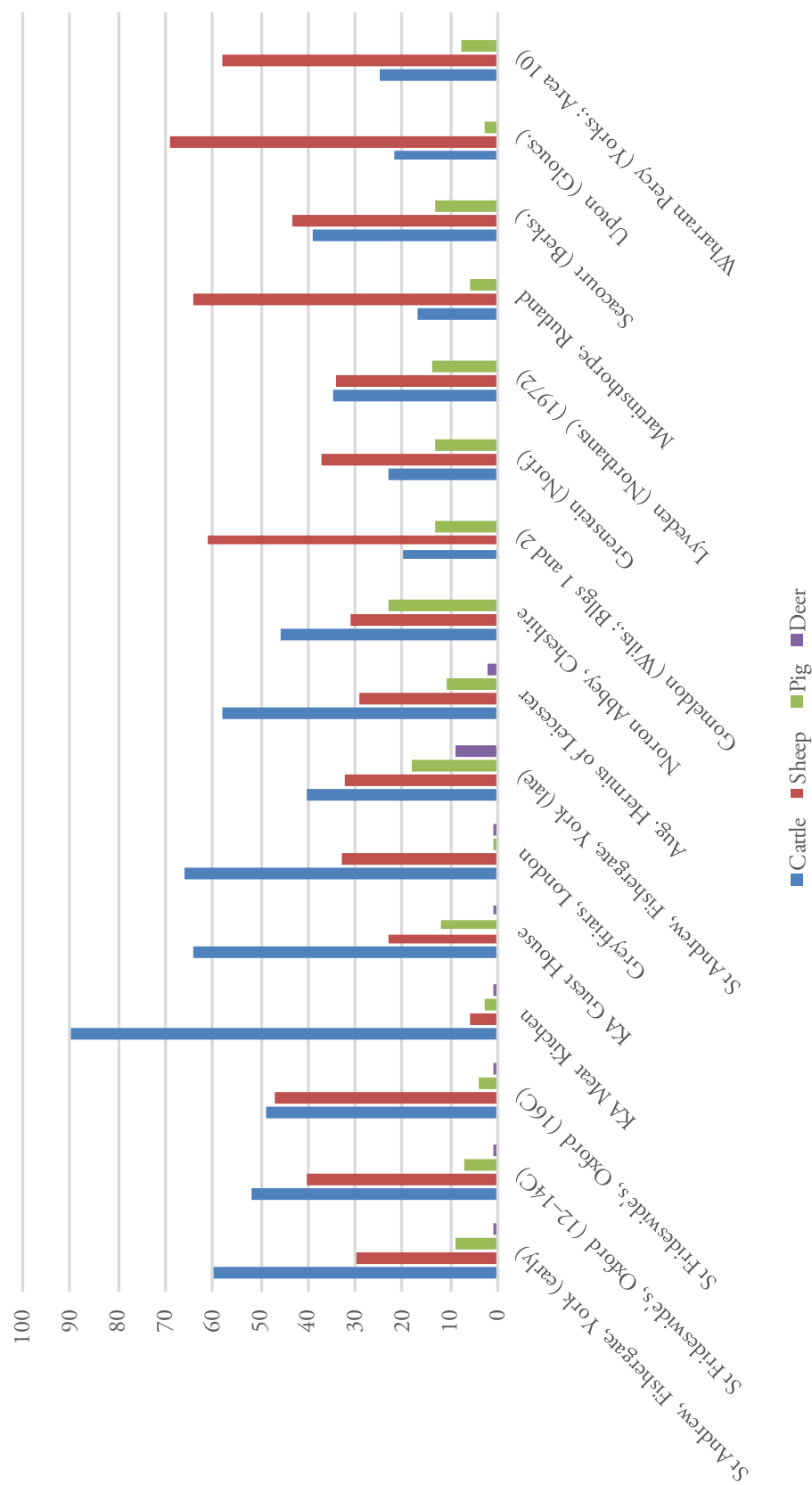
Michael L. Ryder, 'The Animal Bones', in *Kirkstall Abbey Excavations, 1955–59*, Publications of the Thoresby Society, 48 (Leeds: Thoresby Society, 1961), pp. 41–53 (p. 71).

GUESTHOUSE RANGE	OX	SHEEP	PIG	DEER
TOTAL NO. / BONES	1543	508	365	43
% NO. / BONES	50.61	16.66	11.97	1.41

4.5: Composition of animal bones from Kirkstall's guesthouse.

Source: Jane Richardson, 'Kirkstall Guest House Animal Bones', in *Kirkstall Abbey, Vol. 2: The Guest House Excavations, 1979–86*, ed. by Stuart Wrathmell, forthcoming.

Relative Proportions of Species Represented at British Sites



4.6 Relative proportions of animal bones according to species in religious sites of Britain.
Source: Data from Jane Richardson, 'Kirkstall Guest House Animal Bones', in *Kirkstall Abbey, Vol. 2: The Guest House Excavations, 1979-86*, ed. by Stuart Wrathmell (Wakefield: West Yorkshire Archaeological Advisory Service, forthcoming), table 13; supplemented with data from Christopher Dyer, *Standards of Living in the Later Middle Ages: Social Change in England c.1200-1520*, rev. edn (Cambridge: Cambridge University Press, 1989), p. 155, concerning Gomeldon (Wilts.; Bllgs 1 and 2), Grenstein (Norf.), Lyveden (Northants.), Martinsdorp (Rutland), Seacourt (Berks.), Upton (Gloucs.), and Wharham Percy (Yorks.; Area 10).

This image has been removed by the author of this thesis for copyright reasons.

4.7 Seal ring.
SF 1473; location unknown.